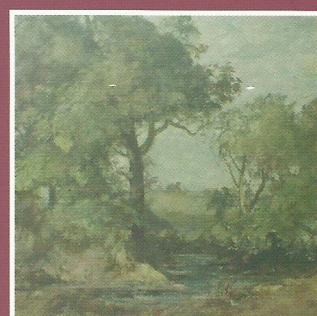
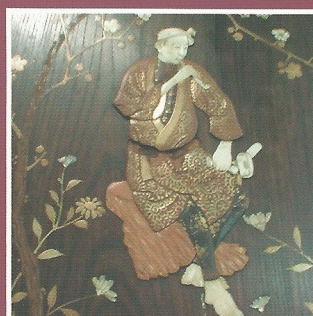
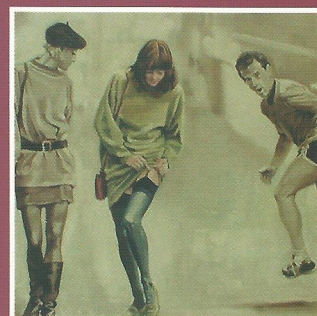


GOLDING YOUNG ♦ 1900

CHARTERED AUCTIONEERS & VALUERS Commercial Asset Agents ♦ Arts & Antiques Surveyors

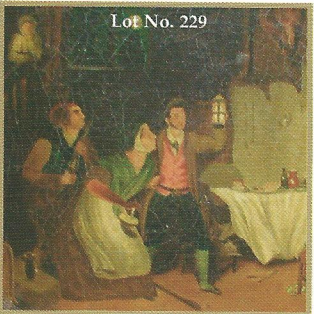
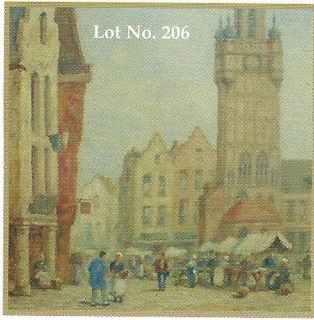


WWW.GOLDINGYOUNG.COM



CATALOGUE SALE

AUGUST 2005



IMPORTANT NOTES FOR PURCHASERS

1. **PAYMENT:** Must be made in full immediately after the Auction. The following methods of payment are acceptable.
 - a) Cash
 - b) Bankers Draft
 - c) Building Society Cheque
 - d) Cheques (accompanied by a valid card.)
 - e) Debit & Credit Cards (the latter subject to a charge of 2% + VAT).

PAYING BY CHEQUE?

If you are not known to the Auctioneers and wish to pay by cheque above your guarantee card limit WE WILL RETAIN THE GOODS until it has been cleared (7 days). There will be NO EXCEPTIONS to our policy. To avoid UNDUE EMBARRASSMENT for yourself or to our staff, please do not ask for preferential treatment. If you wish to clear goods immediately bring a letter from your Bank or a suitable guarantor reference.

2. **BUYERS PREMIUM** of 15% (with a minimum of £1 per lot) is payable on all lots, plus VAT.
3. **REMOVAL OF PURCHASES:** Goods must be collected as soon as they are paid for, and in the 2 Working Days following the sale. If goods are not collected on these days we reserve the right to charge £1 per lot per day thereafter.
4. **COMMISSION BIDS:** If you are unable to attend this or any of our future sales we will be pleased to bid on your behalf. We always purchase at the lowest possible price, subject to other bids and reserves.

All bids must be handed to the office on an official form. It remains the responsibility of prospective purchasers to contact GOLDINGS to confirm whether their bids have been successful.
5. **TELEPHONE BIDS:** There are inherent dangers with this practice, therefore all such arrangements are made entirely at the bidder's risk. Telephone bids will only be accepted if the lower estimate is £500 or above. For lots with a lower estimate below this figure Commission Bids Only will be accepted.
6. **SMOKING** is not permitted in any part of the Saleroom.
7. **REFRESHMENTS** will be available Saleday.
8. **ACCOUNT TRANSFER** will not be recognised after the sale. If any lots are purchased for another person, this must be declared at the fall of the hammer.
9. **ESTIMATES.** Our Auctioneers will be available during viewing to give guidance on your prospective purchases.

Front cover illustration Lot Nos. 40, 182, 200, 218 and 582



GLOSSARY

- a) Generally: 'As Found' (AF). This term indicates the lot has some damage. Its absence does not indicate that the lot is free of defect. All lots are SOLD AS SEEN.
- b) Paintings: 'Signed, initialled, monogrammed' - This refers to the present state of the work and is not an attribution.
- c) Books and printed matter: These items are not sold subject to collation and are not returnable once removed from the premises.
- d) Silver & Jewellery: Weights given are approximations given by basic instruments.

GOLDING YOUNG ♦ 1900

CHARTERED AUCTIONEERS & VALUERS Commercial Asset Agents ♦ Arts & Antiques Surveyors

Upon instructions from over 150 private and professional vendors
from throughout the region.

GOLDING YOUNG & CO will sell by AUCTION

ANTIQUES & WORKS OF ART COLLECTORS ITEMS

including Glass, Ceramics, Metalware, Toys, Books, etc.

On WEDNESDAY 10th AUGUST 2005 at 10am

Lots 1 to 2	Vehicles
Lots 3 to 11	Garden Statuary
Lots 12 to 140	Furniture
Lots 141 to 190	Silver, Jewellery & Bijouterie
Lots 191 to 300	Pictures
Lots 301 to 650	Collectors Items
Lots 651 to 686	Toys

Lot enquiries

Suki J Burnett F.N.A.V.A.
Jan L Squires P.J.Gem.Dip, F.N.A.V.A.
Colin R Young M.R.I.C.S., F.N.A.V.A.

Accounts enquiries

Lucy N Christensen B.A.

VIEWING:

Over 650 lots illustrated online at
WWW.GOLDINGYOUNG.COM

Also in the Auction Rooms
Monday 8th 2pm to 5pm,
Tuesday 9th 2pm to 7pm and
Saleday 9am to 10am.



Golding Young & Co.

Old Wharf Road, Grantham, Lincolnshire NG31 7AA

Telephone: 01476 565118 Fax: 01476 561475 Email: enquiries@goldingyoung.com



RICS

Buyers Hotline: 01476 575202

For lot enquiries and commission bids viewday and saledays only.

FORTHCOMING EVENTS

Whatever you are thinking of selling... *Golding Young has the Auction Solutions.*

Entries welcome 9am to 1pm Monday to Friday except Saleday.

Antiques Valuation Days - Every Friday 9am to 1pm

For details of all forthcoming sales *visit our website or call for our Sale Calendar*

Next Collective Sales 3rd & 24th August

Now Cataloguing Entries of *Fine Antiques, Works of Art & Collectables* for our next important sale
Full Property Clearance Service

◆

THE COLLECTIVE SALES

Your Market Place

for Victorian, decorative and second-hand furnishings, jewellery, silver, ceramics, glass, books, clocks, modern collectables, toys, etc.

Surplus business assets, stock-in-trade, vehicles, plant, machinery & equipment.

NEXT SALES: Wednesdays 3rd & 24th August

VIEWING:

Tuesday prior 2pm to 6pm & Saleday from 9am to 10am
with the sale commencing at 10am.

Lotted lists available on-line at

WWW.GOLDINGYOUNG.COM

From 7pm on the Tuesday or earlier.

◆

A Two-day Sale of

ANTIQUES & COLLECTABLES

On Monday 19th & Tuesday 20th September

Entries now invited of Jewellery, Watches & Bijouterie,
Glass, ceramics, collectables, toys, etc., Silver and Plated Wares
Clocks & Barometers, Pictures, Prints & Miniatures,
Antique & Decorative Furniture

A sale dedicated to 'de-cluttering' of attics, cellars, outbuildings,
sideboards and jewellery boxes!

VIEWING:

Online from 7pm Friday 16th at WWW.GOLDINGYOUNG.COM

Sunday 18th 2pm to 6pm,

Saledays from 9am to start of Sale.

◆

VALUATIONS

Antiques Auction Appraisal Days Every Friday 9am to 1pm

For free advice on marketing there is only one place to come.

We are the ONLY auction house in the region to have ALL of our
experienced valuation staff Qualified as

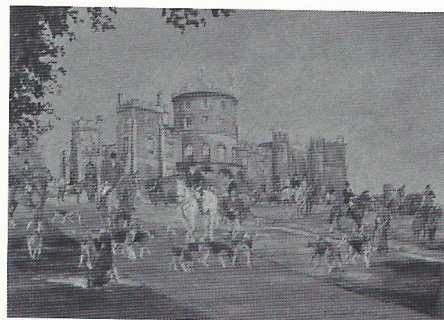
Fellows of The National Association of Valuers & Auctioneers

◆

THE COUNTRY LIFE & SPORTING SALE

A sale of all things

HUNTING - FISHING - SHOOTING - RACING



Sold in our last Country Life Sale for £825

On Tuesday 1st November.

Entries now required of Paintings, Prints, Ceramics especially Beswick
Horses and Farm Animals, Border Fine Arts, Silver, Metal ware, Books,
Taxidermy, Jewellery, Photographs, Postcards, Antiques, Collectables,
Guns, Accessories, etc.

VIEWING:

Online from Friday 28th October at WWW.GOLDINGYOUNG.COM

Monday 30th October 2pm to 7pm and

And Saleday 9am to 10am.

Catalogues £5 each by post, annual subscription £20

◆

THE CATALOGUE SALE

Your Market Place

for Fine antiques and works of art, jewellery, silver, ceramics, glass,
books, clocks, furniture and all fields of collectors' items.

Held quarterly, these sales include select items that need specific
and direct marketing through our select mailing list & databases.

Up to 200 vendors selling items to a Worldwide Audience via The Internet.

The Closing date for entries in the following categories is 7th October
Jewellery, Watches & Bijouterie; Glass, ceramics, collectables, toys, etc.

Books, Stamps, Maps, Ephemera; Textiles & Metalware;

Arms, Decorations, Coins; Silver and Plated Wares;

Clocks & Barometers; Pictures, Prints & Miniatures;

Antique & Decorative Furniture

NEXT SALE: 2nd November 2005

Online at WWW.GOLDINGYOUNG.COM from Friday 30th October

VIEWING: Monday 31st October 2pm to 5pm,

Tuesday 1st November 2pm to 7pm and Saleday 9am to 10am.

Catalogues £5 each by post, annual subscription £20

VEHICLES

1. **A Triumph Dolomite 1500**, four-door saloon car, red, petrol, manual, LNN 992W, 1980, current owner since 1995, 48,884 recorded miles, MOT to 28th July 2006, tax to 31st December 2005. Service history log.
2. **A Suzuki GSXR 600 K3**, motorcycle, blue, AE03 HYX, 5,400 recorded miles. To be sold without reserve upon instructions from Grantham County Court.

GARDEN STATUARY

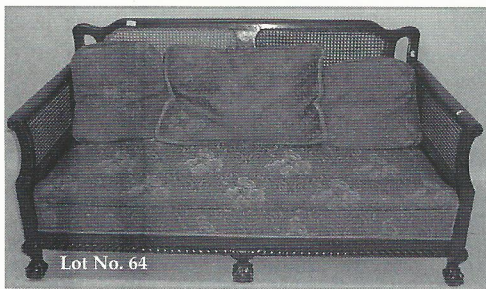
3. **A large green painted wheel-barrow**, with wrought-iron supports.
4. **A cast-iron fire back**, with lion and unicorn in relief, and C. R. cipher.
5. **A composite campana shape garden urn and pedestal**, with egg and dart everted rim over a foliate girdle and semi-lobed body, on square plinth, the pedestal with inset panels, 62" high overall.
6. **A composite octagonal font**, with quatre foil panels, knopped stem and square foot, on ogee plinth, 32" high overall.
7. **A limestone staddle stone**, 28½" square, 29½" square, (one corner missing).
8. **A composite figure of a semi-nude classical female figure**, on circular base and raised on a fluted pedestal, 65" high.
9. **A composite figure**, of a young water carrier, 39" high.
10. **A limestone staddle stone**, 39" high.
11. **Two stone gargoyles**, a birdbath, and a fruit corbel (4).

FURNITURE

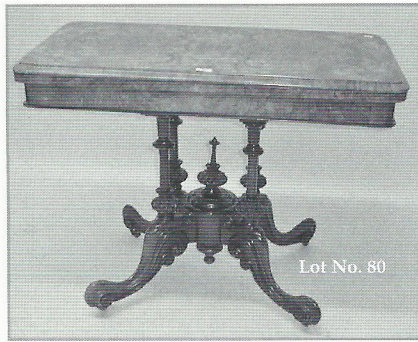
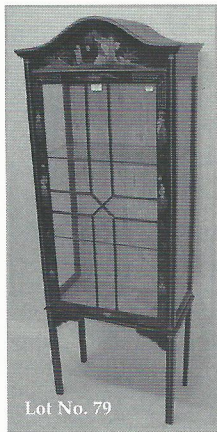
12. **An early 18thC oak longcase clock**, with raised dentil moulded hood, full length door, moulded and plinth base, the 10" brass dial having applied cast spandrels, silvered chapter ring with Roman numerals, inscribed 'Thomas Muddle, tunBridge Wells' [sic], matted centre engraved with stylized birds, date aperture, single hand, 30-hour movement, striking a bell; 84" high.
13. **A 19thC oak and mahogany longcase clock**, of eight-day movement, striking on a bell, the painted arch dial with Roman numerals and secondary dials, signed 'Wilson, Birmingham', the arch painted with shipping, the spandrels with light houses and churches, the hood with swan-neck pediment, turned pilasters, the trunk with a painted arch door, on bracket feet, 87½" high.
14. **An 18thC oak longcase clock**, of eight-day movement, striking on a bell, the square 12" painted dial with Roman numerals, seconds dial and calendar aperture, signed 'Thos. Howse, Marlborough', with medallion and foliate painted spandrels, the square hood with cavetto and dentil cornice, and fluted pilasters, the trunk door with ogee arch and cross-banded, on bracket feet, 79" high.
15. **An early 18thC walnut longcase clock**, of eight-day movement chiming on two bells, the brass dial with Roman and Arabic numerals, seconds dial and vertical calendar aperture, matted centre, signed 'Wm. Smith London' on a tablet, with steel and foliate cast spandrels, re-painted moon dial to the arch, the hood with high domed caddy top over swept and moulded twin arch moulding, later finials and with blind fret friezes, ½ round pilaster flanking the dial, the trunk door with double ogee door and glass lentile, canted sides, on stile feet, 103" high overall.
16. **An early 19thC mahogany longcase clock**, of thirty-hour movement, the painted dial with Roman numerals and secondary dials, painted to the arch and spandrels with harvesting scenes, the hood with swan neck pediments and turned pilasters, the plain trunk with boxwood stringing, 79½" high.
17. **A brass club fender**, with leather cushion top rail, 63" wide.
18. **A 19thC walnut framed elbow chair**, with a high oblong upholstered back, downswept arms with foliate and scroll terminals, plain overstuffed seat, on cabriole fluted legs, block feet, joined by moulded stretchers.
19. **A 17thC French oak armoire**, the two doors each with three paterae carved panels, between chop carved bands, over a conforming apron, on stile feet, 74" high, 50½" wide, 23" deep.
20. **A Victorian mahogany dining table**, with an oblong moulded edge top, with one extra leaf, on four turned tapering and fluted legs with brass caps and ceramic castors, 47" wide, 77½" extended length, with wind-out mechanism.
21. **A set of six 19thC mahogany dining chairs**, each with a carved top rail, over a solid fluted splat, with paterae ornament, the serpentine seat with button upholstery, on fluted and turned legs.
22. **A Victorian oak dining room table**, with four extra leaves, with a moulded edge oblong top, on six sturdy turned and fluted legs, 51" wide, 146" extended length, with wind-out mechanism.
23. **A set of six Chippendale design dining chairs**, including 2 carvers, with pierced vase splats, drop in seats and H-frame stretchers.
24. **A George III mahogany dining table**, with reeded plum pudding top, the base dividing into three gate-leg mechanisms, with ebony and ring-turned decoration on brass cup castors; 90" x 47".
25. **A set of six late Victorian oak dining chairs**, with rectangular Turkish rug upholstered backs, overstuffed seats on barley-twist front legs joined by panelled 'H'-stretchers.
26. **A mid 19thC mahogany breakfront sideboard**, the shaped back with foliate cresting and turned finials, the moulded edge top over a centre cavetto napery drawer and three doors each with inset arch panels, on a solid plinth, 71" wide.

27. **A large late Victorian pollard oak and ebonised sideboard**, by 'Lamb of Manchester', the raised back with foliate finials, anthemion frieze and turned gallery, over a shelf supported by brackets, with three frieze drawers over two pedestal cupboards, the panelled doors flanked by half-round columns, on plinth base, *84½" wide*.
28. **A George III and later mahogany bureau bookcase**, with moulded cornice, two arch astragal glazed doors, fall flap revealing a fitted interior resting on lopers, over two short and two long graduated drawers with brass loop handles and bracket feet; *38" wide, 86" high*.
29. **A George III mahogany bureau bookcase**, the swan neck pediment with applied flowerhead terminals flanking a centre tablet inlaid with detail, over a dentil cornice, the two upper doors with ogee glazing bars, enclosing shelves, the cross-banded and string fall front enclosing a well fitted interior of pigeon holes over eight small drawers and flanking a centre cupboard, and two concealed compartments inlaid with floral detail and stringing and two short and three long graduated drawers, with cockbead moulding, pierced brass backplates, and swing handles, on ogee bracket feet, *91" high, 48" wide*.
30. **A George III and later mahogany bureau bookcase**, with dentil moulded cornice, two astragal glazed doors, fall flap revealing a fitted interior resting on lopers, over three graduated drawers with ebony stringing and brass swan-neck handles, on ogee feet; *42" wide, 89" high*.
31. **A mid 19thC mahogany secretaire cabinet**, the upper section with an overshot pediment over two doors with ogee and oblong glazing bars, enclosing shelves, the secretaire drawer having an oval fielded panel mounted with gilt metal ring handles mounted on foliate backplates, the interior fitted with an arrangement of drawers and pigeon holes over a double cupboard with arched folded panel door, flanked by ¼ round pilasters with petal calyx, on block feet, *89" high*.
32. **A George III mahogany secretaire bookcase**, with dentil moulded cornice, two astragal glazed doors over a deep secretaire drawer, with fitted interior and three further graduated drawers, on bracket feet; *43" wide, 21" deep; 92" high*.
33. **A late 19thC oak dresser**, the upper section with a gadrooned pediment over arcaded shelf, two further shelves, flanked by cupboards. The lower section with three frieze drawers on turned uprights joined by a pot-board, the whole heavily carved with serpent scroll and foliate detail, lion mask and ring handles to the drawers; *72" wide, 20" deep, 86" high*.
34. **A Victorian mahogany three-door wardrobe**, having a moulded cornice over centre mirrored door, flanked by two further down, each with inset arch panels, the interiors fitted with four sliding press shelves over two short and three long drawers and a hanging space, *74" wide*.
35. **A 19thC mahogany corner standing cupboard**, the single door with four inset panels, each with egg and dart mouldings, the interior fitted with five shelves, *57½" high, 30½" wide*.
36. **An early 20thC string inlaid figured mahogany wardrobe**, the cornice with embattled frieze over two mirrored doors, each enclosing hanging space, with two deep drawers below, on bracket feet, *62" wide*, together with a matching dressing table, with oval bevelled mirror plate, two trinket drawers over an arrangement of four drawers around a kneehole, *42" wide*.
37. **A William IV figured mahogany chiffonier**, the raised mirrored back with shell, foliate and scroll cresting over a shelf supported on scroll brackets, with a frieze cushion drawers and two inset panel doors to the base, flanked by simple corbels, *39¼" wide*.
38. **A George IV figured mahogany chiffonier**, the cross-banded top with a raised painted arch back, two panelled frieze drawers over two cupboard doors with ogee panelling, on turned feet, *43" wide*.
39. **A George III mahogany bureau**, the fall flap revealing a fitted interior and resting on lopers, over two short and three long graduated drawers, with oval pressed brass loop handles and bracket feet; *42" wide*.
40. **An important Regency Classicism mahogany breakfront side cabinet**, the top with a narrow moulded edge over a frieze with gilt metal mounts, the centre and cupboard with gilt metal banding and paterae corner mounts, flanked by fluted muntins, two flanking drawers with gilt metal cast lion mask handles, within deep circular recesses, over conforming cupboards, on six paw feet, *39" high, 60" wide, 25" deep*.
41. **A Victorian mahogany toilet mirror**, the rectangular plate in a cushion frame supported by scroll uprights, the serpentine moulded base on scroll feet, *25" high, 22" wide*.
42. **A 19thC oak and mahogany crossbanded chest**, of two-short and three long drawers, cockbeaded, with turned knobs, on bracket feet, *45¼" high, 40½" wide*.
43. **A 19thC mahogany buffet**, the oblong top with a raised shelf, over an arrangement of two drawers and shelves, with fluted framing, on bun feet, *52" high, 25½" wide*.
44. **A George III mahogany what-not**, with three shelves over a single cupboard, with turned uprights; *18" square, 59" high*.
45. **A 19thC mahogany two-section campaign chest**, with brass mounts, having two short and three long drawers, each with inset brass handles and Brammah type locks, *36" high, 39" wide*.
46. **A Victorian walnut marquetry davenport**, with raised bombe pen tray, and four drawer base with opposing dummy drawers having knob handles; *21" wide*.
47. **An early 19thC mahogany bow front chest**, of three graduated drawers, cockbeaded, with stamped metal oval backplates and handles, on splay feet, *34¼" wide*.
48. **A 19thC French mahogany chest**, of five long drawers, with grey and liver marble top, brass beading, loop handles and escutcheons, on turned feet; *50" wide*.

49. **A George III oak chest**, of four graduated drawers, each with swan neck handles, on bracket feet, 34" wide.
50. **A George III mahogany serpentine chest**, of four graduated drawers, with brass ring handles and splay feet; 42" wide.
51. **A George III and later mahogany bachelor's chest**, with brushing slide over 2 short and 3 long graduated drawers, brass knob handles and bracket feet, 37" wide.
52. **A George I style walnut chest**, of two short and three long graduated drawers, with cross-banded herringbone strung top, brass drop handles, and bracket feet; 39" wide.
53. **A mid 19thC mahogany bowfront chest of drawers**, the top with fluted edge over two short and three long cockbeaded and graduated drawers, with brass drop handles and hexagonal backplates.
54. **A late 18thC oak coffer**, with a plain moulded top over a gadroon frieze and triple panel front, carved with quatrefoil medallions, guilloche muntins, on stile feet, 45" wide.
55. **A Victorian carved oak knee-hole desk**, having raised top, three frieze drawers, and three to each pedestal, with carved lion mask handles and plinth base; 48" wide, 27" deep.
56. **A Victorian carved oak centre table**, with gadrooned frieze and drawer with lion mask handle, bulbous supports, and carved stretcher, on dolphin feet; 47" x 35".
57. **An 18thC oak coffer**, the plain top over a triple panel front, on stile feet, 50" wide.
58. **An 18thC oak coffer**, the plain top over a carved frieze and three indented panels, carved with octagonal medallions, divided by guilloche muntins, on stile feet, 48" wide.
59. **An 18thC oak coffer**, the triple indented panel top over an arcaded and foliate carved frieze and three conforming panels, on stile feet, 51" wide.
60. **An early 20thC stained beech occasional table**, the oblong top with an intalio carved border of flowers, birds and insects, on wrythen framing, 28" x 24".
61. **An early 20thC mahogany window table**, the shaped octagonal top with moulded edge, on fluted and turned legs, joined by an undershelf, on ceramic castors, 23½" wide.
62. **A 19thC mahogany bowfront chest**, of two short and three long drawers, cockbeaded, with turned wooden handles, on bun feet, 35½" wide.
63. **A reproduction burr walnut bowfront chest**, of six drawers, crossbanded, with a brushing slide, with drop brass handles, on splay ogee feet, 42½" high, 24" wide.
64. **An early 20thC oak three-piece suite**, with single Bergere caned panels, with gadroon moulded apron, on claw and ball feet, green floral upholstery.
65. **An Edwardian mahogany boxwood strung sofa**, with straight back, downswept arms, on square tapering legs with brass caps and castors, upholstered in blue damask.



66. **A 19thC oak two-tier circular stand**, the dished top supported on spirally turned uprights, with conforming lower tier, on block and feet, 25½" high, 19" dia.
67. **A late 19thC oak occasional table**, the square top carved with foliate detail and with a single diagonal drop flap, on bobbin turned and block framing, 22" square.
68. **An Arts & Crafts oak occasional table**, with a circular top, supported on three slab sided pierced uprights joined by an undershelf, 16" dia.
69. **An early 18thC oak coffer**, with with chip carved and moulded edges, 35½" wide.
70. **A reproduction mahogany pedestal desk**, the top with inset green tooled leather writing surface and gadrooned edge, over an arrangement of nine drawers around the kneehole, on bracket feet, 60" wide.
71. **An early 19thC oak tilt-top pedestal table**, the planked circular top on a baluster and knopped column and three downswept legs, 36" dia.
72. **A Queen Anne style walnut stool**, of serpentine shape, with a drop-in upholstered seat, shaped apron, on cabriole legs with pad feet joined by cross stretchers.
73. **An oak Elizabethan style four poster bed**, with a panelled top supported by moulded cornice to three sides, linen fold head and footboard, fluted and lobed cup and lever uprights, internal measurements, 62" wide, 79" long.
74. **A George III mahogany and elm tilt-top table**, the planked circular top over a slender baluster and ring turned pedestal on three downswept legs, 27" dia.
75. **A George III style mahogany standing corner cupboard**, the upper part with a moulded and dentil cornice, over a single door with geometric glazing bars, the interior with two shelves, the lower section with a single glazed door, on bracket feet, 72½" high, 27" wide.
76. **An early 20thC rosewood occasional table**, the oval top with Sheraton type foliate inlays and stringing, on slender cabriole legs joined by a serpentine undershelf, 25" wide.
77. **A 19thC camphorwood cabin trunk**, with brass banding, fitted with carrying handles, the interior lined with new baize, 36" wide.
78. **An early 19thC rosewood work and games table**, the oblong crossbanded chess board over a plain frieze drawer and sliding fabric covered well, on twin end supports, foliate capped scroll feet joined by a turned stretcher, 28cm wide.



79. **An early 20thC black lacquered display cabinet**, painted and gilt with Chinese figures and buildings, the serpentine pediment over a single door with geometric glazing bars, enclosing glass shelves, on square legs supported by shaped brackets, 64" high, 24" wide.
80. **A Victorian burr walnut fold-over card table**, the swivel top with baize lined surface and moulded edge, supported on four knopped and tubed columns, centred by a foliate finial, on four downswept scroll moulded legs with ceramic castors, 37½" wide.
81. **A beech two section Globe Wernicke style bookcase**, with fold-over glass doors above a narrow apron drawer, 39" high, 34" wide.
82. **A George III style mahogany sofa table**, with two frieze drawers, on twin end supports with downswept moulded legs terminating in brass caps and castors, 34" wide, 64" long (distressed).
83. **An early 20thC rosewood envelope card table**, the swivel four-section top inlaid with ivory and boxwood urn and foliate detail, in the Sheraton manner, the interior flaps with counter wells, on square tapering legs joined by a square undertier with gadroon border, 21" square.
84. **A mahogany framed low back wing armchair**, upholstered in yellow velvet, the downswept moulded uprights with paterae terminals, on square channelled legs joined by cross stretchers.
85. **A 17thC and later elm refectory table**, the plank top over a plain frieze, on baluster turned legs joined by square framing, 30" x 89".
86. **A mid 20thC Bechstein walnut baby grand piano**, overstrung 6½ octave, on square tapering legs with brass caps and castors, 58½" wide, 57" deep.
87. **An Edwardian stained beech piano stool**, with turned handles, lift-up seat on cabriole legs joined by cross stretchers.
88. **An early 19thC mahogany fold-over tea table**, the oblong top over a plain frieze inlaid with a lower border on square tapering legs, 35" wide.
89. **A walnut framed firescreen**, oblong, on splay legs with a needlework panel depicting a falconer on horseback, circa 1950, 26¼" wide.
90. **A Victorian mahogany fold-over card table**, oblong with moulded edge, the swivel top with green baize playing surface, on twin end turned pillars, downswept legs, block feet, joined by a turned stretcher, 36" wide.
91. **A Victorian mahogany footstool**, oblong, with a crimson padded seat, of foliate scroll cabriole legs, with knarled feet, 28" x 14½".
92. **A Victorian rosewood serpentine whatnot**, three tiers supported by open barley twist supports, having drawer base and brass castors, 21" wide.
93. **A George III style mahogany cross-banded Pembroke work table**, the twin drop flaps with rounded corners, over an end drawer and opposing dummy drawer, each with ring handles, on square tapering legs with spade feet, the framing with chevron and string inlays, 16¼" x 30½".
94. **A button back armchair**, with crimson upholstery, on giltwood cabriole legs with strapwork detail and brass castors.
95. **A Victorian framed sampler firescreen**, with a gilt slip, the sampler worked by Elizabeth Goodwill, aged 11 years, 1842, with a religious verse, Adam & Eve, various animal, figural, and organic motifs, within a flory and counter flory border, 24¼" x 25".
96. **An E. E. Godwin ebonised elbow chair**, with moulded top rail and uprights, trellis splat, outswept arms with ring turned supports and knob finials, the oval seat with gros-point woolwork seat, on turned and ring turned splay legs with conforming stretchers.
97. **A mahogany framed firescreen**, oblong, with a gros-point woolwork panel of flowers on a blue ground, 21¼" wide.
98. **An 18thC oak blanket box**, with a moulded edge hinged top, fitted with two carrying handles, plinth base, 46" wide.
99. **A Regency style mahogany elbow chair**, the slightly curved bar back over cross splat, downswept arms, drop in seat, on square tapering legs joined by stretchers, together with two matching single chairs.
100. **A Victorian burr walnut fold-over card table**, the cartouche shaped top with baize playing surface, with swivel action, on end turned supports and downswept legs with scroll feet, with foliate detail, 37½" wide.
- 100A. **An Edwardian oak overmantel mirror** with bevel plate.
101. **A 19thC mahogany bidet stand and cover**, on turned legs, fitted with a plain pottery bidet, 23" wide.
102. **An early 19thC oak fold-over tea table**, cross-banded in mahogany, with a small frieze drawer, on ring turned legs, 36" wide.
103. **A 19thC walnut and ebonised side cabinet**, with gilt metal mounts, inlaid with paterae the single glazed door enclosing two velvet lined shelves, on plinth base, 31½" wide.
104. **A 19thC oak Restoration style armchair**, the top rail centred by a crown flanked by scrolls, twist uprights, with downswept arms, solid seat, on turned and block legs with twist front stretcher.
105. **A 19thC oak Derbyshire chair**, the back with two carved arched rails, downswept arms, solid seat with squab cushion, on turned legs joined by stretchers.

106. **Three Aesthetic movement ebonised side chairs**, the top rails carved with paterae, over galleried mid rail, overstuffed seats, on turned and tapering legs formed by stretchers.
107. **An oak rocking chair**, with brass mounts, pierced splat over sunflower mid rail, the uprights and arms carved with acanthus, gros-point overstuffed seat, over shaped apron.
108. **A Colonial teak framed deck chair**, with brown cotton seat and extending arms.
109. **A set of four Victorian mahogany dining chairs**, with serpentine seats and cabriole legs.
110. **A late Victorian mahogany part suite**, comprising: elbow chair, four dining chairs, two nursing chairs, each having a carved top rail with pierced anthemion and foliate details, pierced splat, overstuffed seats, on turned legs, the elbow chair with an upholstered back panel.
111. **A Victorian walnut balloon back side chair**, the open back inlaid with foliate scrolls, over an overstuffed serpentine needlework seat, on cabriole legs.
112. **A late Victorian rosewood framed armchair**, the partially upholstered back with pierced foliate panel and lower splat with foliate inlay, padded arms with acanthus terminals, overstuffed seat, on square tapering legs with ceramic castors.
113. **A Victorian oak framed armchair**, the back encircling rail moulded in relief with fruiting vine, enclosing a buttoned velvet panel, downswept arms, loose seat, on lobed and moulded legs with block feet, joined by stretchers.
114. **A late Victorian mahogany framed sofa, elbow chair, and three matching side chairs**, with swept rectangular backs, with pierced foliate corners and conforming splats, overstuffed serpentine seats, on cabriole legs with pad feet.
115. **A Victorian upholstered armchair**, with bobbin turned framing.
116. **A Victorian walnut framed chair**, with upholstered back, serpentine seat, on scrolling encircling frame.
117. **A Victorian mahogany framed armchair**, with a scroll button upholstered back, padded scrolling arms, serpentine seat, on turned legs with ceramic castors.
118. **A 19thC oak Wainscot type chair**, with a shaped top rail over solid and carved back, downswept arms, solid seat, on baluster turned legs with square framing.
119. **An early 19thC figured mahogany toilet mirror**, the oblong plate supported by reeded uprights with ivory finials, the curved base with three frieze drawers with turned ivory handles, on ogee bracket feet, 24" wide.
120. **A Victorian gilt wood and gesso overmantel mirror**, with foliate cresting and ornately moulded frame, 56" x 52".
121. **An early 19thC mahogany elbow chair**, with oblong back, downswept arms, on turned legs.



122. **An early 20thC oak settle**, with moulded cresting over a triple panel marquetry back, box seat with rising line, on turned feet, 26½" wide.
123. **A Victorian mahogany corner cabinet**, possibly by Collumon & Lock, having a mirrored superstructured with pierced pediment and open shelves supported by turned uprights, the top with fretted frieze, over an arrangement of open shelves with Mooresque details, 64cm high.
124. **A Jas. Shoolbred & Co. walnut occasional table**, the oblong moulded edge top over four splay legs with pierced panels, joined by a galleried under-tier, 21" x 21¼".
125. **A Victorian rosewood framed footstool**, oblong with a woolwork and beaded top, worked with flowers and scrolls, the moulded frame with rope border, on four scroll feet, 29" x 6".
126. **A Victorian walnut framed circular footstool**, with ebonised dentil border on four stump feet, the woolwork top with a floral design, 12" dia.
127. **An Edwardian mahogany display cabinet**, with arabesque, flowers and scrolls in the Sheraton manner, having a raised back over a single door with ogee glazing bar, enclosing two shelves, on square tapering legs, 23½" wide.
128. **A late Victorian mahogany hall tidy**, the mirror back over a single glove drawer, 25" high, 13½" wide.
129. **A late Victorian mahogany framed mirror**, the rectangular bevelled glass enclosed by a shaped panel with shaped pediment, fitted with small quadrant shelves supported by turned uprights, 24" x 15½".
130. Spare Lot.
131. **A Victorian mahogany library table**, with leather inset moulded top, six drawers to each side with knob handles, raised on turned legs with brass cup castors; 36" x 118".
132. **A pair of Eames type softpad desk chairs**, with open arms, with brushed aluminium frames, brown leather seats and backs, and bent plywood frames.
133. Spare lot
134. **A Victorian walnut framed nursing chair**, with turned and reeded supports.

135. A Victorian rush-seated child's rocking chair.
136. An 18thC walnut open armchair, with foliate and shell carved back, with barley-twist supports, scrolling acanthus arms, studded tapestry seats, and barley-twist 'H'-frame stretcher.
137. An 18thC oak open armchair.
138. An Edwardian brass telescopic oil lamp standard, (converted to electricity), raised on three claw feet.
139. An Edwardian brass telescopic oil lamp standard, (converted to electricity), raised on three spade feet.
140. A 19thC ebonised tripod table, with circular inlaid top, hexagonal tapered pillar, and three scroll legs.

SILVER, JEWELLERY & BIJOUTERIE

141. A platinum set diamond solitaire ring, the diamond of mounted estimated weight 1.04ct set in a four-claw mount to shoulders set with nine tiny diamonds each side, Sheffield 2004, maker E. F.
- 141A. A cased set of six coffee spoons, having 'E. H. & S.' monogram finials, fox mask over crop stems, and plain bowls, maker W.L.D. Birmingham assay (F).
142. An 18ct white gold diamond set half hoop eternity ring, set with eight baguette cut diamonds. Total mounted estimated weight 1.64ct.
143. A 1920's style oval brooch, set centrally with a Verneuil sapphire, the pierced plaque set with diamonds.
144. A sapphire and seed pearl set brooch, a foxes head at the centre, within a sapphire set horseshoe over seed pearl and sapphire set crossed hunting horns, stamped 15ct.
145. A silver egg cup, with a wavy rim, engraved with initials, Birmingham 1946, a silver circular sugar bowl with reeded rim and stepped foot, Birmingham 1933, 5oz. gross.
- 145A. A canteen of Scheer, American sterling cutlery.
146. An Edward VII silver vesta case, engraved with ivy and scrolls, Birmingham 1907.
147. A white metal vesta case, embossed with mermaids and sea serpents, stamped 'Sterling'; a silver match box cover, hallmark rubbed.
148. An early George V silver engine turned vesta case, Birmingham 1910.
149. A silver oblong photograph frame, Birmingham 1942, 9½" x 7½".
150. A silver three-piece tea service, rounded oblong, with gadroon borders, on bun feet, the teapot with ebonised finial and handle, Birmingham 1940, 31oz. gross.
- 150A. A Rolex 9ct gold ladies wristwatch, on link bracelet, boxed.
151. An ivory and rose metal necklace, two tusk shaped ivory pieces joined centrally with rose metal mounts to links and ball.

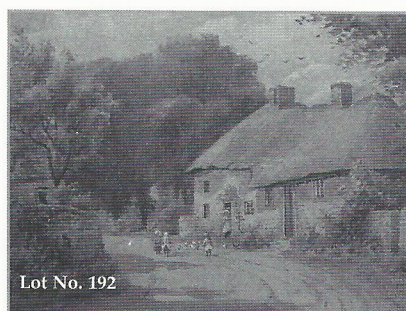


152. An 18ct gold and diamond set cluster ring, the lozenge shaped head set centrally with a collet set brilliant cut diamond of mounted estimated weight 0.32ct surrounded by twelve small diamonds totalling approximately 0.12ct to divided shoulders and D shaped shank. Sheffield 1995.
153. An Edwardian seed pearl and amethyst set brooch, a tear drop amethyst suspender below a square shaped C scroll-work amethyst and seed pearl set panel, set in yellow metal stamped 9ct, maker H & CB.
154. A ladies Omega 9ct gold cased wristwatch, on integral mesh link bracelet, round satin dial, baton numerals.
155. A diamond solitaire ring, a princess cut diamond set in a high claw mount to yellow metal shank stamped 14K. Mounted estimated weight 0.61ct.
156. A gentleman's gold cased wristwatch by Patek Philippe, satin dial with gold hands and baton numerals, subsidiary second hand, on non-original leather strap.
157. A ladies flower head diamond set ring, six small diamonds with a central slightly larger stone, set in white metal to a yellow metal shank stamped 18ct.
158. A solitaire diamond ring, a modern brilliant cut stone of 0.75ct approx., claw set in white metal to a white metal shank stamped 18ct.
159. A ladies Vacheron & Constantin gold wristwatch, a twisted rope link bracelet stamped 18ct, a rectangular gold colour satin dial, Roman and baton numerals with convex glass.
160. An 18ct gold diamond channel set half hoop eternity ring, set with nine round brilliant cut diamonds. Total mounted estimated weight 1.00ct.
- 160A. A signed Japanese ivory inro, four sections, with ojime bead and signed hardwood netsuke, carved with a dragon.
161. A bloodstone agate and carnelian swivel fob, in 9ct gold, Birmingham 1899, on a 9ct gold curb link chain, 56cm length.
162. A gold cased mid-size Longines wristwatch, c.1930, alternate Arabic numerals subsidiary seconds hand, curved glass on non-original leather strap.
163. A Victorian amethyst set bar brooch, gold ribbon like extensions either side of an oval facet cut amethyst in a rub over setting stamped 15ct.
164. A 1920's diamond set dress ring, set with a double row of diamonds in millegrain mounts, five to each row total mounted estimated weight 0.12ct to yellow metal shank stamped 18ct.

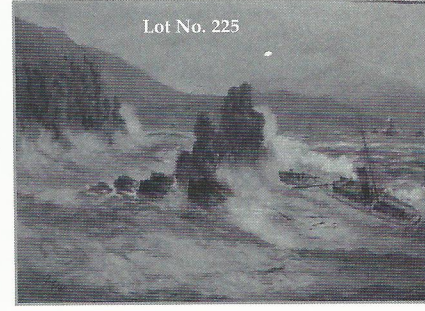
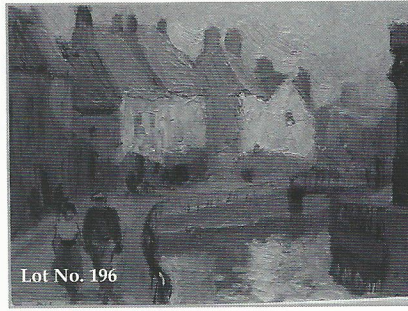
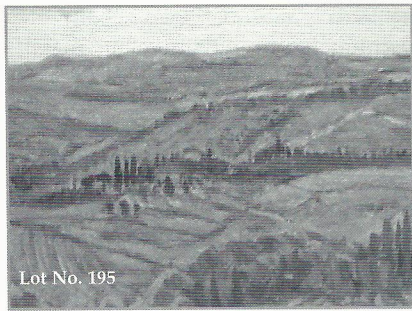
165. **A pair of cufflinks**, $\frac{1}{4}$ pond South African coins, one dated 1895 the other 1894, with chain and bar fastenings, weight 17.3g *all in*.
166. **A silver pair cased pocket watch**, open faced (enamel damaged) maker Ja. Bridges, London 1835.
167. **A solitaire diamond ring**, a round brilliant cut stone of mounted estimated weight of 0.90ct, claw set in white metal, six tiny diamonds set in each shoulder to a thin yellow metal shank.
168. **A seven stone in-line diamond eternity ring**, total mounted estimated weight 0.70ct, each stone claw set in white gold to yellow gold shank with sizing studs, 18ct hallmark London, date rubbed.
169. **A solitaire diamond ring**, a round brilliant cut stone.
170. **A Victorian style modern diamond set oval hinged bangle**, central stone of 0.40ct, eight stones each side totalling 0.80ct approx., total mounted estimated diamond weight 2cts, the whole set in 18ct gold claw and pierced mount, import marks.
171. **A 9ct gold curb link charm bracelet**, with seventeen charms including an 1898 sovereign, and a 1914 half-sovereign, total weight 75.2g.
172. **A Victorian bar brooch**, an oval central plaque set with a small diamond and seed pearls.
173. **A 9ct gold garnet set dress ring**, the central faceted garnet surrounded by twenty-one small garnets, London 1966.
174. **A sapphire and diamond set ring**, 9ct gold, an oval sapphire flanked by two smaller round sapphires intersert by four small diamonds, 1976.
175. **A 9ct gold sovereign ring**, 1918, together with a small Russian wedding ring.
176. **An Edwardian three stone ring**, set with facet cut water opals, 15ct gold square setting Chester 1904, together with a child's signet ring, stamped 9ct.
177. **A three stone diamond ring**, three round old cut diamonds set in a white metal collet mount to a yellow metal shank, total mounted estimated weight 1.35cts.
178. **A 9ct gold brickette link bracelet**, with mounted 1885 sovereign attached.
179. **An 1895 sovereign**, in a pendant mount with yellow metal chain.
180. **A three stone ring**, set with a central square cut sapphire of 5.6mm x 4.2mm, flanked by two small illusion set diamonds set in white 18ct gold to yellow 18ct gold shank, Birmingham 1995.
181. **A gold cased Waltham mid-sized wristwatch**, white dial, Arabic numerals, subsidiary seconds hand, on an expanding bracelet with catch.
182. **A Victorian gold and seed pearl necklace**, a central floral motif flanked by eight seed pearl set buds on stems, the supporting chain with each link set with a seed pearl together with a seed pearl set heart pendant which can be suspended below the central motif but which is an addition, in original case.
183. **A 1970's/80's necklet**, of satin flat linked chain divided to two graduated front falls, yellow metal stamped 750, 18" length, 31g weight.
184. **A three-row bracelet**, matching the previous lot, 31g weights, 7 $\frac{1}{2}$ " length.
185. **A solitaire diamond ring**, a round brilliant cut diamond of mounted estimated weight 0.55ct set in platinum.
186. **An Edward VII silver two-handled trophy cup**, with an everted rim, annulated body, on domed foot, inscribed, Birmingham 1905, 5 $\frac{1}{2}$ " high, 5oz.
187. **An Edward VII silver vase**, with an everted waved rim, over a circular body with basal knob, on waisted stem with circular stepped foot, Chester 1907, 5 $\frac{1}{2}$ " high, weighted base.
188. **A Georg Jensen circular bowl**, on a raised foot rim, marked 'Sterling, Denmark 878', 10" dia. 45oz.
189. **A pair of contemporary silver candlesticks by Garrard & Co.**, designed by Alex G. Styles, the circular two part nozzles over circular veritically ribbed sectional columns, London 1968, 11 $\frac{1}{2}$ " high, 52oz. gross.
190. **An Edward VII silver hot water jug**, of panelled ovoid shape, the domed cover with urn finial, the loop handle with ebony heat exchangers, Sheffield 1904, 8 $\frac{3}{4}$ " high, 19oz.

PICTURES

191. **J. B. Pyne.** *Windsor castle and its surroundings*, oil on canvas, 13" x 24". Bears printed label verso, 'Painted 1840 by James Baker Pyne, Born 1800, died 1870, his first exhibition Royal Academy 1835, Admitted Society of British Artists 1842'.
192. **Powell May.** *Children and chickens outside a thatched cottage on a country lane, surrounded by trees*, watercolour / heightened white, signed; 11 $\frac{1}{2}$ " x 18 $\frac{1}{2}$ ".
193. **Christopher Witherns.** *'Newquay', harbour scene from a hillside*, oil on canvas, inscribed and signed verso, 12 $\frac{1}{4}$ " x 14".
- 193A. **Thomas C. Moore (attrib.).** *Winchelsea, village street with figures*, watercolour; 6" x 8".
194. **H. M. Marshall.** *A nocturnal street scene*, oil on canvas, signed; 12" x 16".
195. **Victor Willis.** *'Santa Lucia di Sotto, Late Afternoon, Tuscany'* oil on board, signed with monogram, gallery label verso, 7 $\frac{1}{2}$ " x 17".
196. **Rene George Gauthier.** *Strolling couple by a river, buildings either side*, oil on board, signed, 5 $\frac{1}{2}$ " x 7".

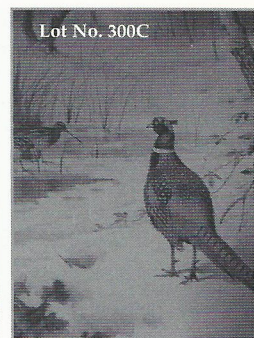
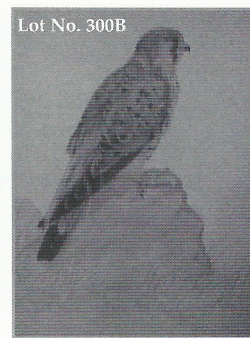
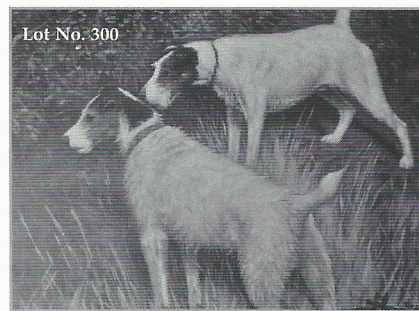
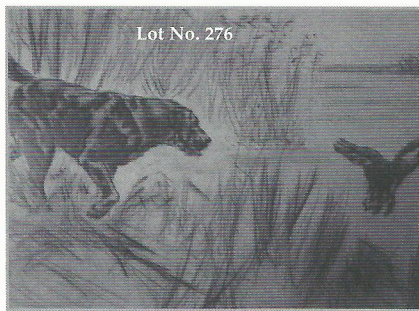


Lot No. 192



197. **Sydney Pike.** *'Evening on Surrey Hill'*, oil on canvas, title and signed verso, 10" x 16".
198. **John Ogilby.** *'The Road from London to Boston in Lincolnshire'*, hand coloured double-sheet road map, circa 1670, 13" x 17".
199. **By & After J. Alphege Brewer.** *Chester Cathedral*, interior, coloured etching, signed in pencil to the margin, image size 7½" x 6"; a coloured engraving, *'Fortune Teller'*, 19thC, (Bird's eye maple frame), 8½" x 7½".
200. **Terry Shelbourne.** *'Second Look'* oil on canvas, signed and dated 1988, 16" x 20".
201. **M. H. Taylor.** *Still life - chrysanthemum in a terracotta vase*, watercolour, signed and date 1892, 16" x 12¼".
202. Spare Lot.
203. Spare Lot.
204. **H. M. Marshall. (Attrib.)** *A nocturnal view of a country home over a lake*, oil on canvas; 12" x 16".
205. **Pierre LeBeouff.** *'Provins Seine et Marne'*, oil on canvas, signed, modern frame; 20" x 30".
206. **Pierre LeBeouff.** *'Bergues pas de Calais'*, oil on canvas, gilt framed; 20" x 30".
207. **A quantity of 18th & 19thC black and white engravings**, various subjects, unframed.
208. **A quantity of 18th & 19thC engravings**, lithographs etc. and assorted ephemera, unframed.
209. **An collection of 18th & 19thC engravings etc.**, including Gilring, Morland, Kip, unframed.
210. **A collection of 18th & 19thC engravings**, mezzotints, lithographs (unframed).
211. **18thC School.** *Cottagers at rest, outside a half-timbered thatched cottage*, oil on panel, 14" x 12".
212. **Mary McNichol Wroe.** *Study of an elderly lady*, half length, facing sinister, watercolour, signed with initials and dated 1892, 20" x 16".
213. **After Samuel Buck.** *The West View of Torkswy Hall nr. Gainsborough*, hand coloured copper engraving, circa 1726, 7½" x 14¼". **After Malton,** *Cusworth Hall, in Yorkshire*, copper engraving, circa 1788, 6½" x 8", two country maps of Rutland (4).
214. **A collection of ornithological engravings**, lithographs, colour prints etc., in a box folder.
215. **A suitcase containing a large quantity of assorted prints**, engravings, lithographs etc., including a Kitchen map of Ireland circa 1786, and Victorian scraps.
216. **By & After J. W. King.** *Cambridge colleges*, a pair, signed etchings, 8" x 13" (unframed).
217. **A. H. Findlay.** *Lincoln Cathedral*, a pair, watercolours, signed, 15" x 10¾".
218. **Oliver Hall (1869-1957).** *'Tree landscape, North Wales'*, oil on canvas, signed, title verso, 14" x 20".
219. **Wesson.** *'Coastal Waters'*, watercolour, signed, 13½" x 20".
220. **19thC Italian School.** *'Venezia'* panoramic view of St. Marks Square from the lagoon, watercolour, gouache, heightened white, gum arabic, 8½" x 35".
221. **19thC Italian School.** *'Lago Di Como'*, panoramic view from a hillside with small townships by the water's edge, numerous sailing boats and steamship, figures in the foreground, watercolour, gouache, heightened white, gum arabic, 8½" x 35".
222. **19thC Italian School.** *'Genoa'*, panoramic view of the harbour and town with numerous boats, abbey on the nearby hillside, watercolour, gouache, heightened white, gum arabic, 8¾" x 35".
223. **David Hall McKewan.** *'The Sinila - Tullymore Park Co. Down, Ireland'*, fishermen by a rushing stream, watercolour, signed and dated, old artist label verso, 19½" x 29".
224. **Elijah Walton.** *'A Wind Storm in the Engadine'*, watercolour, heightened white, signed and dated 1877, bears Thos. Agnew Gallery label, and Royal Jubilee Exhibition labels verso, 27" x 19¼".
225. **M. Ash.** *Fishing boat aground on rocks in heavy seas*, watercolour, signed, 13¾" x 21½".
226. **Georges Robin (20thC).** *'Le Loing pres de Souppes'* oil on canvas, signed, 20" x 25".
227. **E. Planchais (20thC).** *Hillside village in the midi-Pyrenees, France*, oil on canvas, signed, 24" x 28½".
- 227A. **20thC School.** *Two gentlemen studying the figure of a sleeping flower girl in parkland*, oil on panel, indistinctly signed; 15½" x 11½".
228. **Jules Rene Herve (1887-1981).** *Wedding party in a country town, France*, oil on canvas, signed, 25¾" x 32".
229. **19thC School.** *'Romance Discovered'*, gently humorous scene in a Victorian kitchen, oil on canvas, 8½" x 11".

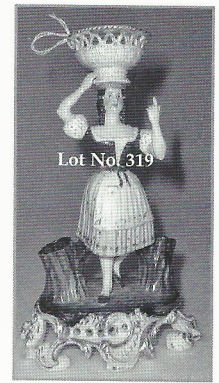
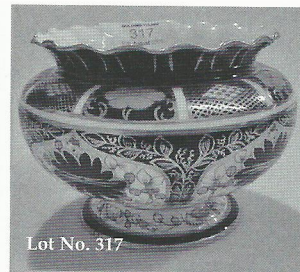
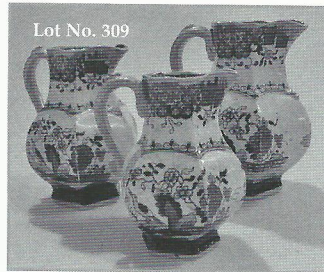
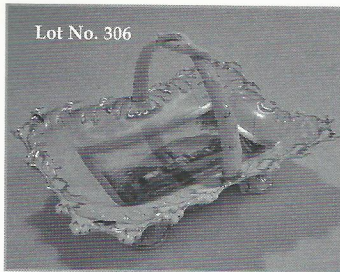
230. **Rudolph H. Sauter (attrib).** Woodland landscape, gouache, bears artist name on mount, $5\frac{3}{4}'' \times 9\frac{1}{2}''$.
231. **Childs.** 'Unloading the catch', coastal inlet with thatched cottage, watercolour, signed, $11'' \times 15\frac{1}{2}''$.
232. **Attrib. Auguste Bouvier.** Girl with floral wreath, another with laurel wreath, a pair, watercolours, heightened white, signed, $6'' \times 4''$.
233. **E. Benvenuti.** Gondola on a Venetian canal, watercolour, signed, $11\frac{1}{4}'' \times 5\frac{1}{2}''$.
234. **An early Victorian sampler,** by Ann Quin, March 30 1835 Quadring School, worked in coloured threads with letters, verse, a house and trees, within a flory and counter flory border, $12\frac{1}{2}''$ square; a Berlin machine-made tapestry of figures in an 18thC garden landscape, $9\frac{3}{4}''$ square (2).
235. **20thC School.** Still life - abstract study of vessels and fruit, oil on canvas, indistinctly signed, $20'' \times 24''$.
236. **20thC School.** Still life of lilies in a vase, oil on canvas, indistinctly signed, $30'' \times 20''$.
237. **Sidoli.** 'Lane Near Clay Cross, Derbyshire' oil on board, signed and dated '75, $20'' \times 15\frac{1}{4}''$.
238. **A Victorian woolwork picture,** of Jesus outside the Temple, $25\frac{1}{2}'' \times 19\frac{1}{2}''$, gilt slip, rosewood frame.
- 238A. **After William Russel Flint.** A frost and reed coloured print, signed in pencil to the margin, and bearing label verso dated 9/9/55.
- 238B. **19thC School.** Portrait of a young boy arranging flowers in a bonnet with ribbon, oil on canvas; $30'' \times 20''$.
- 238C. **19thC School.** Fisherman on a river tow path leading to a stone bridge, oil on canvas; $20'' \times 30''$.
- 238D. **20thC English School.** Still life of summer flowers, in a terracotta vase decorated with putti, oil on canvas; $34'' \times 24''$.
- 238E. **George Oyston. (19thC).** Haymakers in a field and figures by a country house, a pair, watercolours, signed with initials and dated '94; $3\frac{1}{2}'' \times 6''$.
239. **An early Victorian woolwork picture,** of a noblewoman seated in a garden, a parrot on her hand, attended by a Nubian servant, $20'' \times 16\frac{1}{4}''$.
240. **A Victorian woolwork picture,** of an hawk amongst flowering foliage, $19'' \times 15\frac{1}{2}''$.
241. **A Victorian woolwork picture,** of a wiseman with a child, $19'' \times 14''$.
242. **A Victorian woolwork picture,** of a parrot, butterflies, and kingfishers amongst flowering foliage, $18'' \times 13\frac{3}{4}''$.
- 243-53. Spare lots.
254. **Terry Shelbourne.** Study of a girl in a black dress, watercolour, signed and dated '80, $18'' \times 10\frac{1}{2}''$.
255. **A Victorian sampler,** by Betsey Harwood, Saxilby, aged 12 years, dated 1845, worked in coloured threads with a verse, three-storey house, trees, flowers, and other motifs, within an ornate flory and counter flory border, $22\frac{1}{2}'' \times 19\frac{1}{2}''$.
256. **A memorial portrait,** with text, facsimile drawing, a chromolithograph, figures on a country path, pencil sketch of a country house (3).
257. **After Hogarth.** Tavern scenes, copper engraving, first pub. 1735, $14'' \times 16''$.
258. **Willem & Johannus Blaeu.** 'Lincolnia Comitatus Angles' Lincolnshire engraved hand-coloured map, with cartouche heraldic shields and figural scale, circa 1650, $17'' \times 20''$.
259. **A Victorian woolwork picture,** of three girls and a dog in a garden, within a repeat border, $8\frac{1}{2}'' \times 10\frac{1}{2}''$, gilt slip and rosewood frame.
260. **By & After Coney.** 'Sempringham Priory, Lincolnshire' hand coloured engraving, circa 1820, $9\frac{1}{4}'' \times 12\frac{1}{2}''$.
261. **After Wild.** North West view of Lincoln Cathedral, hand-coloured steel engraving, circa 1819, $11\frac{1}{2}'' \times 13''$.
262. **A Victorian collage,** of seaweeds arranged in a woven basket, set in a cream mount with cut-out text below, gilt slip and bird's eye maple frame, $12\frac{3}{4}'' \times 14\frac{1}{4}''$ overall.
263. Spare Lot.
264. **20thC School.** Shooting with setters in a forest, oil on canvas, indistinctly signed, dated 1977; $14'' \times 21''$.
265. **19thC School.** Landscape with river and bridge in the foreground, oil on canvas; $15'' \times 24''$.
266. **After Leon Danchin.** 'Fighting Cock', hand coloured engraving, signed in pencil; $21'' \times 30''$.
267. **Burrows.** Resting cattle in a landscape, oil on panel, circle, $7''$ dia.
268. **Clark.** Study of a bay horse in a stable yard, oil on canvas, $10'' \times 14''$.
269. **19thC School.** 'Near Loch E xxx', oil on artist's board, signed with a monogram, indistinct title verso; $12'' \times 9''$.
270. **W.B.** 'Haymaking' - young girl greeting a farmhand at the field gate, oil on canvas, signed with initials and dated 1901, $16'' \times 22\frac{1}{2}''$.
271. **A. P. Humphrey.** Common Partridge and Belvoir Castle, watercolour, signed, $14'' \times 18''$, artist & R.A. Exhibition labels (1973) verso.
272. **D. Spoon.** 'Cattle in a field', woods beyond, oil on canvas, signed, title and artist name verso, $19'' \times 25\frac{1}{2}''$.
273. **19th / 20thC School.** Dog rescuing a baby from the waves, oil on conti board, $17'' \times 15\frac{1}{2}''$.
274. **Style of Thomas Creswick.** Figures by a mill stream, mill house on opposite bank, oil on panel, bears signed monogram and dated 1839, $11'' \times 14''$.
275. **John S. Shiach.** Salmon fishing on the Tweed St. Drybergh, oil on board, signed, $10\frac{1}{2}'' \times 15\frac{1}{4}''$.
276. **After Henry Wilkinson.** Black labrador chasing a mallard, colour etching, Ltd. Ed. 22/75, signed in pencil.



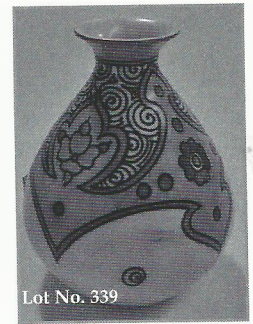
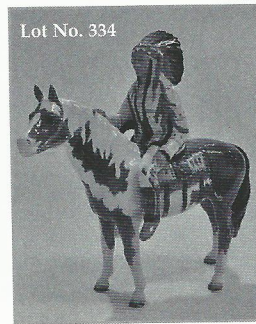
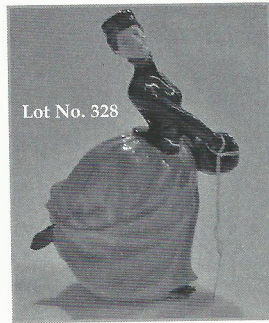
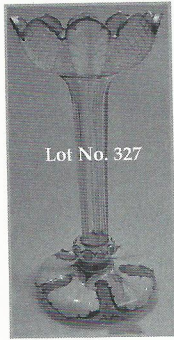
277. **After Charles Ancelin.** Horse racing, colour print. 12" x 19".
278. **After Charles Ancelin.** Trotting, colour print, 12" x 19".
279. **Weir.** Three pen and ink sketches of a horse, two pencil of birds and hound (5).
280. **GAF.** Study of huntsmen i) Lord Henry Vane-Tempest, ii) The Marquis of Londonderry, iii) the Marquis of ????, set of three, lithographs, circa 1898, 17 $\frac{3}{4}$ " x 12". **After Rowlandson.** Hunting scene, soft ground etching, 9" x 13" (damaged).
281. **A colour photograph of a pack of hounds amidst the hunt,** 7 $\frac{1}{2}$ " x 11 $\frac{1}{2}$ ".
282. **After Terence James Bond.** Grey Partridge in cover, Ltd. Ed. colour print 9/200, signed in pencil and with remarque, 9" x 10", together with a Wildlife Habitat Trust First Day Cover, and two loose stamps, # 0009, # 01009.
283. **By & After John Trickett.** 'Ptamigan', Ltd Ed. colour print 36/850, signed in pencil by the artist, 11 $\frac{1}{2}$ " x 10" (unframed).
284. **After Ros Goody.** 'Study of Country Pursuits', reproduction colour print, 16" x 21 $\frac{1}{4}$ ".
285. **After Derek E. Howden.** 'Natural Hunters (The Ferret)', Ltd. Ed. print 302/850, 12" x 16".
286. **After Mick Cawston.** Study of a fox, Ltd. Ed. reproduction colour print 30/850, signed in pencil to the margin with remarques, 17" x 20".
287. **After Archibald Thorburn.** Grouse on a Yorkshire moor, reproduction colour print, Ltd. Ed. 321/500, Tryon Gallery, London, 14" x 19".
288. **After Archibald Thorburn.** Grouse in a Highland landscape, with deer beyond, reproduction colour print, Ltd. Ed. 481/500, Tryon Gallery, London, 14" x 18 $\frac{1}{2}$ ".
289. **After Archibald Thorburn.** Grouse on a Yorkshire moor, reproduction black and white print, Ltd. Ed. 491/500, pub. Tryon Gallery, London, 14" x 19".
290. **After Archibald Thorburn.** Capercaillie and other game birds, reproduction colour print, Ltd. Ed. 364/500, pub. Tryon Gallery, 18 $\frac{1}{2}$ " x 14".
291. **After Archibald Thorburn.** Golden Eagle and chicks, reproduction colour print, Ltd. Ed. 332/500, pub. Tryon Gallery, London, 18 $\frac{1}{2}$ " x 14".
292. **After Emms.** 'Walking the Hounds', reproduction colour print, 8 $\frac{3}{4}$ " x 7 $\frac{1}{2}$ ".
293. **19thC School.** 'Full Cry', hand coloured etching, image 8 $\frac{1}{2}$ " x 9 $\frac{3}{4}$ ".
294. **By & After J. C. Harrison.** Snipe, in flight in a winter landscape, reproduction colour print 164/350, signed in pencil, 12" x 17".
295. **A set of twenty-four cigarette cards - Game Birds & Wild Fowl,** framed.
296. **After G. D. Armour.** A colour hunting print, signed in pencil.
297. **After Snaffles.** 'Pass Friend', colour print.
298. **After Ashley Boon.** Ltd. Ed. 86/300 colour print, signed in pencil.
299. **A framed reproduction set of Player's 'Country Sports' cigarette cards.**
300. **Fergus Connell.** 'On the Scent', two wire haired terriers looking at a burrow entrance, oil, 16" x 24", titled, monogrammed and signed.
- 300A. **Brian C. Day.** Shell ducks and mallards, watercolour, 14" x 21", signed, Gallery label verso dated 1975.
- 300B. **Deborah Thorpe.** A kestrel on a rocky outcrop, watercolour, 15" x 12", signed.
- 300C. **After J. C. Harrison.** 'In Spring Attire', Ltd. Ed. reproduction colour print 84/250, signed in pencil to the margin, and blind trade guild stamp, pub. Tyron Gallery, London.
- 300D. **After Lionel Edwards.** Hunters over a drystone wall in moorland landscape, reproduction colour print, limited edition 20/500, pub. by the Tryon Gallery, c.1978, image size 13 $\frac{1}{2}$ " x 21 $\frac{1}{2}$ ".
- 300E. **20thC English School.** A port scene with fishing and other vessels, oil on canvas, indistinguishably signed (possibly Davids); 16" x 32".

COLLECTORS ITEMS

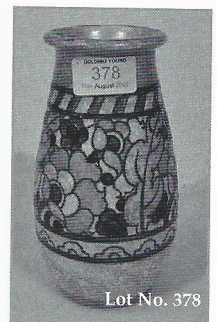
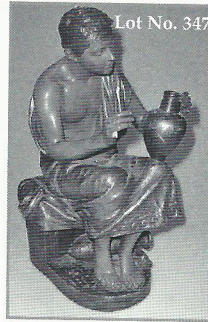
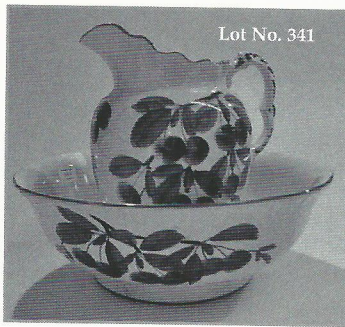
301. **A Doulton stoneware spherical bowl,** on three peg feet, the neck with a band of applied rosettes within gilt moulded borders and fitted with three handles, the main body with gilt concentric impressed circles, with acanthus detail, 5 $\frac{1}{4}$ " high.
302. **A German porcelain figure group,** of a seated woman with masked jester, she in a flowered 18thC costume, a cockatoo on her left hand, a bowl of cherries in her lap, 7" high faux Carl Theodore mark in underglaze blue (losses to tree).



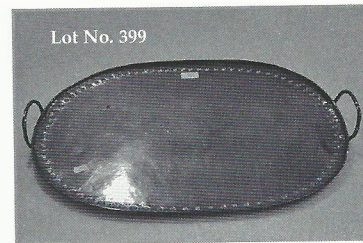
303. **A Doulton stoneware jug**, by Frank Butler, ovoid, with elongated neck and loop handle, incised with simple green leaves against a blue ribbed ground, 8" high, impressed factory mark 1873, incised artists monogram.
304. **A 19thC Staffordshire pottery figure**, of a mounted soldier entitled 'War', mainly white with polychrome highlights, 12¼" high.
305. **A Copeland majolica figural lamp or candlestick base**, modelled as a young girl holding a lamb, against a moulded tree trunk, standing on a moulded base with a lidded urn at her feet, 9½" high.
306. **A Chamberlains Worcester porcelain topographical basket**, painted to the well with a scene of Malvern, within gilt border against a cream ground, the border moulded and gilt with foliage, the overhead handle as a twig, on a raised plinth foot rim, 8¼" wide, repaired with rivets.
307. **A Middlesborough pottery chafing dish**, printed in blue with a figural river landscape with country folk in boats, within a wild rose border, 11¼" dia., circa 1835.
308. **A Jacob Petit pen holder**, modelled as a pair of riding boots, painted and gilt with birds, flowers and scroll cartouche, on an oblong base with gilt line and moulded fringe, J. P. in underglaze blue to the base, 5½" high, circa 1850.
309. **A set of three Fenton stoneware graduated jugs**, of hexagonal shape, printed and painted in underglaze blue and iron red with Chinese landscapes, moulded serpent handles, 7" to 5½".
310. **A Ruskin pottery pottery lamp base**, hexagonal, blue mottled glaze against a cream ground, 6½" high, factory mark, W. Howson Taylor in script.
311. **A pottery water jug**, moulded as a fish, the tail curling back to its head to form a handle, in naturalistic glaze, on oval base, 7" high.
312. **A Prattware mug**, polychrome printed with naval landscapes within cartouche shape borders against an iron red ground, repeat printed border to the inner rim, 3" high; a Wallis Gimson earthenware octagonal plate, printed in the Aesthetic manner with flowers and topographical panels, 9½" wide (chipped); a Derby plate, painted with wild roses and berries, 10¼" dia.
313. **A Royal Winton 'Maze' pattern pottery strainer dish and plate**, 9" wide.
314. **A 19thC earthenware circular wall plate**, painted with blackberry sprays against a summer sky, 12¼" dia.
315. **A late 19thC pottery toilet ewer**, wrythern moulded, polychrome printed with summer flowers, gilt highlights, 11½" high.
316. **A pair of Doulton Burslem pottery two-handled vases**, ovoid, with deeply everted rim, painted in underglaze blue iris, with gilt dusting and line borders, 7½" high (one with repaired handles).
317. **A Royal Crown Derby bowl**, ovoid, with a waved everted rim, on a raised foot rim, decorated in the Imari palette, pattern # 1128, 4½" high, 6" dia.
318. **A 19thC Continental porcelain two-handled pot pourri vase and cover**, of ogee shape, on a knopped pierced pedestal, printed with amorini panels and encrusted with flowers, the pierced cover with flower encrusted finial, 9½" high.
319. **A Continental porcelain table centrepiece**, modelled as a Countrywoman, supporting a pierced basket on her head, flanked by two tree stumps, on rocaille base, 9½" high.
320. **A pair of 19thC Sitzendorf porcelain figures**, in 18thC costume, each holding a pug dog, 3" high (repaired).
321. **A pair of 19thC Staffordshire pottery groups**, of sleeping child with recumbent dog, on scroll moulded bases, 4½" high (one with repaired break).
322. **A 19thC German porcelain figure**, of a clown seated on a tree stump, a hat in his hand, in a blue and red striped top, gilt scroll and flower encrusted trousers, red shoes, on a rocaille scrolled base, 7½" high.
323. **A 19thC Staffordshire pottery figure**, of a theatrical figure seated within a canopy, predominantly white with pink jacket and gilt highlights, 9½" high (chipped).
324. **A pair of German porcelain figures**, in 18thC costume, on moulded tree stump bases, 8" high.
325. **A 19thC Staffordshire pottery cow creamer**, painted with black splashes, on a shaped base with seated milkmaid, 6¼" high.
326. **A 19thC German porcelain figural candlestick**, modelled as a scantily dressed woman in flower sprigged dress, holding a child, on a serpentine shaped flower encrusted base, 13" high (damaged).
327. **A 19thC Bavarian glass vase**, the petal shaped bowl over a slender stem, on circular foot, with white overlay and hatched detail, gilt highlights, 11¼" high.



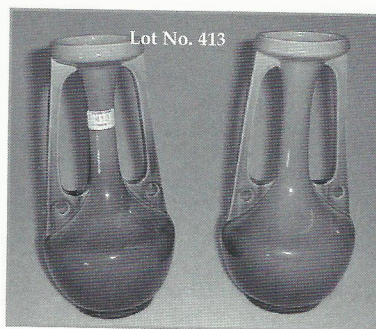
328. **A Royal Doulton figure, 'Grace'** HN 2318, designed by M. Nicholl, 8" high.
329. **A Royal Doulton figure, 'Biddy Penny Farthing'** HN 1843, designed by L. Harradine, 8 $\frac{1}{4}$ " high.
330. **A Royal Doulton figure, 'Christmas Parcels'** HN 2851, designed by W. K. Harper, 8 $\frac{3}{4}$ " high.
331. **A Beswick figure, of an elephant with extended trunk, model # 974, grey gloss, 4 $\frac{3}{4}$ " high.**
332. **A Lladro porcelain figure, of a seated polar bear, 4 $\frac{3}{4}$ " high, and a Nao figure group of angels 6 $\frac{1}{2}$ " high, another, of a kneeling angel, 4 $\frac{3}{4}$ " high (3).**
333. **A Royal Doulton Collectors Club Pottery In The Past loving cup, moulded in relief with Potteries townscape and female potters, 6 $\frac{1}{2}$ " high.**
334. **A Beswick figure of a mounted Indian, on a Shetland pony, designed by Orwell, model # 1391, 8 $\frac{1}{2}$ " high.**
335. **A Royal Doulton figure - 'Bo Peep' HN 1811, designed by L. Harradine, 5" high, another - 'Fair Maiden' HN 2211, by P. Davies, 5 $\frac{1}{2}$ " high (2).**
336. **A Royal Doulton figure - 'Phyllis' HN 1420, designed by L. Harradine, 9" high.**
337. **A Beswick figure - of a panda # 1815, black and white gloss, 2 $\frac{1}{4}$ " high.**
338. **A Brooks & Bentley porcelain group, 'Cozy Moment' of a penguin and pup, on moulded base, 7" high.**
339. **A Burleigh Ware vase, by Charlotte Rhead, ovoid, painted with flowers and scrolls within Arabic panel, against a pale green ground, pattern # 1004, 6 $\frac{1}{2}$ " high.**
340. **A Don pottery 'Paris' pattern moulded jug, with a waved rim and scroll handle, printed in black and polychrome, painted with vases of flowers and harvesting implements, inscribed George Anderson & Jane, c. 1820, 8 $\frac{1}{2}$ " high.**
341. **A Wemyss style pottery toilet bowl and ewer, painted with cherries between green lines, 15 $\frac{1}{2}$ " dia. and 11 $\frac{1}{2}$ " high respectively.**
342. **A treen octagonal box and cover, on moulded foot rim, the cover with turned bone finial, 5 $\frac{1}{2}$ " high.**
343. **A 19thC polished steel tobacco jar and cover, of oblong panelled outline, on a raised bracket base, the cover with spire finial, 7 $\frac{1}{4}$ " high.**
344. **An elm miniature bar back chair, with solid seat, on baluster turned front legs, 11 $\frac{1}{2}$ " high.**
345. **A mahogany miniature tilt-top pedestal table, the circular moulded edge top over a vase turned pedestal on tripartite incurving platform with compressed bun feet, 8 $\frac{1}{4}$ " dia.**
346. **A signalman's brass lantern, square, with domed roof, with hanging loop and glass panels, one opening, 13 $\frac{1}{2}$ " high.**
347. **After the Antique: a French plaster figure of a seated youth, holding a water jar, a further vessel at his feet, 18 $\frac{1}{2}$ " high (Finger detached).**
348. **A Doulton Slaters Patent ovoid vase, with a waved everted rim, and rough brown lace ground, lightly enamelled in white and blue, between green borders, relief moulded and gilt with flowers, 19" high.**
349. **A 19thC yew wood circular box and cover, with glass liner, 3 $\frac{1}{2}$ " dia, another circular box with turned cover, 2 $\frac{1}{4}$ " dia, (cracked).**
350. **A 19thC walnut two-division cutlery tray, the centre panel with integral handle, 15" wide.**
351. **A 19thC walnut jewellery casket, oblong, the slightly domed cover mounted with a vacant cartouche, the interior with a fitted tray, hinged fascia enclosing a concealed compartment to the base, 8" wide.**
352. **A Keswick School copper tray, oblong, embossed with flowerheads, arabesque and foliage within a trefoil border, stamped KSIA, 17 $\frac{1}{2}$ " x 13 $\frac{1}{4}$ ".**
353. **An Arts & Crafts pewter dish, by Hugh Wallis, the well embossed with a Tudor Rose, within rope twist border, 10" dia.**
354. **A Victorian brass footman, the top pierced with hearts, hung with two loop handles, pierced frieze, on cabriole legs, 16" wide.**
355. **A Jas. Powell amethyst glass table lamp base, with a spirally ribbed baluster body, 13 $\frac{1}{4}$ " high.**
356. **A Whitefriars Drunken Bricklayer cinnamon glass vase, designed by Geoffrey Baxter, 8 $\frac{1}{2}$ " high.**
357. **A Greenhalgh amethyst cased glass scent bottle, with an external band of gilding on applied abstract spirals, the stopper with confirming ornament, 4 $\frac{1}{4}$ " high, signed to base.**
358. **A 19thC Jacobean style wine glass, the bucket bowl with everted rim and bubble inclusions, on double air-twist stem, stepped foot, 6 $\frac{1}{2}$ " high.**



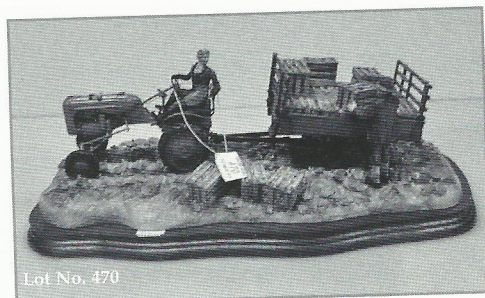
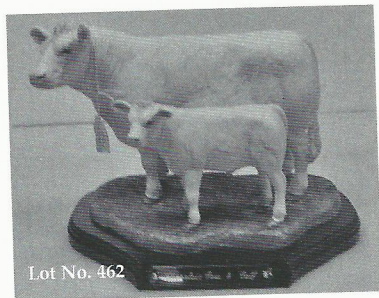
359. A Victorian cut glass claret jug, of slender baluster shape, with plated mounts, mask spout and pineapple finial, 11½" high.
360. A Venetian glass decanter, modelled as a clown, the stopper his head, decorated in green and white to the body, multi-coloured hat and bow tie; 11½" tall.
361. A Ralph Lauren 'Safari' display glass Eau de Toilette bottle, 11¾" high, together with a part bottle of Safari Eau de Toilette.
362. A pair of 'Presence' display glass scent bottles, 11" high.
363. A Worth 'Je Reviens' Eau de Toilette display scent bottle, 9¾" high.
364. A Ralph Lauren green glass 'Polo' display Eau de Toilette bottle, a Christian Dior 'Eau Sauvage' display bottle and an Yves Saint Laurent 'Kouros' display flask (3).
365. A Guerlin 'Champs-Elysees' display scent bottle, 15¼" high.
366. Three Lancome 'Poeme' display scent bottles, 8¼" high, 4¾" high, and 3¾" high.
367. A J. Del Pozo 'Duende' display scent bottle, 17½" high, a Cacharel flask, an Ungaro eau de toilette bottle (3).
368. A collection of Scent and Eau de Toilette bottles, some display models.
369. A pair of Doulton Slaters Patent ovoid vases, with everted rims, the rough brown lace ground lightly enamelled with flowerheads, between rich blue border, 10½" high.
370. A pair of Royal Doulton stoneware baluster vases, with deep blue glaze, 9" high.
371. A Cantonese pottery hexagonal vase, enamelled with Chinese figures in gardens, pierced with quatrefoil panels, 10½" high, a Chinese blue and white brush pot, painted with a mountainous landscape, 4¼" high, each on associated hardwood stands (2).
372. A Royal Worcester Regency Ware compress ovoid vase, with a mottled orange lustre ground, 3½" high, circa 1933.
373. A Royal Doulton figure, of a seated Siamese cat, HN 2655, 5½" high.
374. A Royal Doulton sleeve vase, with swelling rim, tubelined and painted with rose spray against a streaky blue ground, 10¾" high, impressed factory mark, # 7803, bears initials for Besie Newbery.
375. An early 20thC terracotta wall plaque, moulded in high relief with the head and shoulders of a girl, facing dexter, 13" dia.
376. A Victorian burr walnut domed casket, enclosing a single lidded interior, 9" wide.
377. A Victorian walnut circular footstool, with a woolwork and beaded top, worked as an angel at prayer amongst foliage, braid border, on ovoid feet, 13¼" dia.
378. A Crown Ducal pottery ovoid vase, by Charlotte Rhead, tubelined and painted in the Byzantine pattern, # 2681, in shades of taupe, russett, and blue against a mottled orange ground, 7" high.
379. A Moorcroft pottery trinket dish, circular, tubelined and painted with a crocus against a deep blue ground, 4½" dia., impressed marks and paper label to underside.
380. A 19thC Pratt ware pot lid, 'Hide & Seek' with base pot, 4" dia.
381. A 19thC Pratt ware pot lid, 'Hide & Seek', in an ebonised circular frame, 7" dia. overall.
382. A Grafton china 'Swains Tuddy Series' ashtray, mounted with a playful puppy, entitled 'Ball Boy', together with three further puppies from the same series.
383. A Royal Doulton figure, of a Dachshund HN 1128, 4" high.
384. A Moorcroft pottery trinket dish, tubelined and painted in the Clematis pattern against a streaky green/blue ground, 4¼" dia. paper label to underside.
385. A Clarice Cliff waterlily vase, painted in yellow, on a moulded base, 4¼" high.
386. A late 19thC porcelain white glazed table centerpiece, by Charles Ford, the slightly dished tableau with basket weave border, supported by three cherubs, their arms interlinked and seated on a tripartite pedestal, with swag detail, on three acanthus moulded feet, 7¼" high, (cracks to base).
387. A Chinese ovoid vase, gilt with vases and foliage between ornate borders, against a powder blue ground, 14" high.



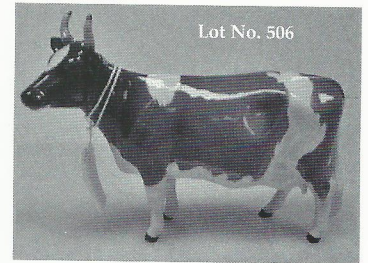
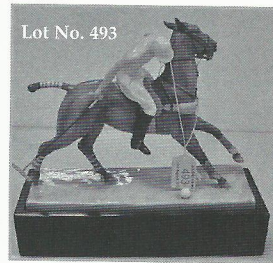
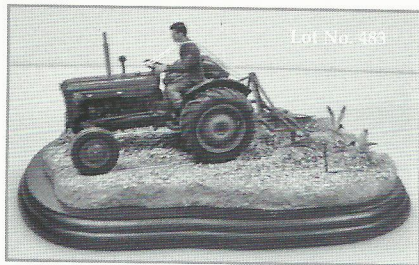
388. A pink Vasart glass basket, with folded rim, 4" high, a mottled pink Vasart vase with moulded everted rim, 3" high, a Monart of Vasart green glass vase, of circular tapering form, 5½" high. (3)
389. A pair of Royal Doulton baluster vases, tubelined and painted with flowers and foliage against a rich blue ground, 8¾" high.
390. A Thompson of Kilburn nut dish, circular, the adzed exterior carved with a mouse, 5½" dia.
391. Two pairs of embossed brass, leather and beech bellows, a cast brass pipe rack, vesta stand, and three trivets (6).
392. Eleven brass trivets.
393. An early 20thC wall hanging toilet mirror, the oblong glass on a shield shape mount, with cast brass mask pediment and towel rail, 17" high.
394. An Italian pierced brass candlestand, of cruciform outline having a square centre sconce, on a swept base with two extending arms, each supporting smaller sconces, bears lavel 'Gius. Calcagni, C. Ticinese, No. 70 Milano', 17" high.
395. An early 19thC rosewood tea caddy, of rounded oblong form, with a sarcophagus cover, satinwood banding and with two metal drop handles to the sides, the interior with two lidded compartments flanking a bowl aperture, 12" wide (some veneer loss and patching).
396. A Victorian brass circular box and cover, with cast gadroon borders, the engraved cover inset with an Ashford Marble medallion, within blue enamel bands, 4" high, 7" dia.
397. A Thompson of Kilburn oak oval cheese board, with a handle carved with a mouse, 15½".
398. A beaten copper circular dish, overall foliate detail, with two brass swing handles, 21¼" dia.
399. An oval copper two-handled tray, with a punched dot border, 24" wide.
400. A black painted cast iron doorstop, modelled as a swan, 13" high; another, of classical design, 13" high (2).
401. A moulded pink stained glass epergne, with a single frill edge trumpet emerging from a moulded dish, supported by a figural pedestal, on domed foot, 18½" high.
402. A Brethby pottery green glaze jardiniere, with an everted undulating rim, shape # 7901, 15" dia.; two further examples, similar, both 8½" dia. (3).
- 402A. A Brethby green and red glazed jardiniere and stand, with wavy rim.
403. A Brethby pottery green glass jardiniere, of ovoid shape, moulded with stylized plant forms, 8¼" dia.
404. A Brethby pottery green glaze jardiniere, circular with everted rim, shape # 1913J, 11" dia.; and a green glaze plant pot, shape # 1943D, 6" dia.; another, of octagonal outline, 5¾" dia. (3).
- 404A. A Brethby style moulded centrepiece, with three swans to base, 10" high.
405. A Brethby pottery jug, moulded and painted with flowers against a grey ground, shape # 3426, 7¾" high; a pair of green glaze mollusc shape dishes, 3" high (3).
406. A pair of Brethby pottery green glaze cube shape jardinieres, shape # 1848K, 7½".
407. A Brethby pottery green glaze shallow oblong dish, shape # 3038E, 11½" x 15½"; a green glaze circular vase with inverted rim, shape # 1644H, 9" dia.; a green glaze oval dish with textured detail, shape # 1767E, 10" wide (3).
408. A pair of Brethby pottery green glaze vases, of circular waisted outline with waved rims and three twist loop handles, shape # 1109A, 4¼" high; a Brethby circular vase with everted rim, shape # 1938A, 5½" high; a Brethby pottery green glaze chamberstick, shape # 2439 (cracked) (4).
409. A Brethby pottery jardiniere, with an undulating rim graduated yellow and green glaze, shape # 1038J, 10" dia.; a green glaze plant pot, of circular waisted outline, shape # 2184B, 7" dia.; another plant pot, shape # 2187E, 7" dia. (3)
410. A Brethby pottery green glaze jardiniere, modelled as a coopered bucket, shape # 2118H, 8" high; a green glaze cauldron shape bowl on scroll feet, shape # 2296, 8½" dia.; a small green glaze jardiniere, with everted waved rim, 6¼" dia. (3).
411. A Brethby pottery green glazed vase, of conical outline, shape # 3438, 7" high; a circular dish, with stylized pierced floral detail, 8" dia.; a coopered pottery small jardiniere, 6" high (3).
412. A pair of Brethby pottery green and ochre glazed tazzas, the leaf moulded tableaux supported on circular tapering columns with applied stylized tendrils, shape # 1762B, 9" high.
413. A pair of Brethby pottery green glaze vases, circular with everted rim, over extended necks, flanked by two pierced handles, shape # 1565E, 13½" high.



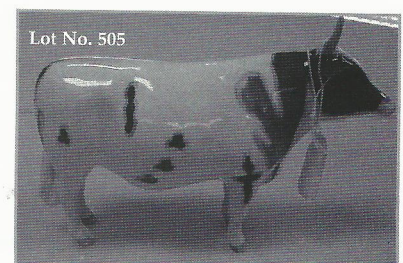
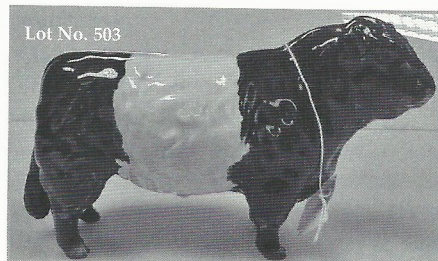
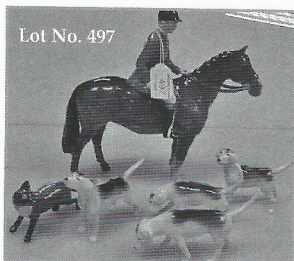
414. A Bretby pottery green glaze vase, of compressed circular outline, with a trumpet neck and three applied handles, 17¼" high; a green glaze pottery vase, circular with everted rim over extended neck flanked by two handles, 13½" high (2).
415. Three Bretby pottery green glaze small jardinières.
416. A Bretby pottery yellow and green glaze jardinière, moulded with stylized plant form, shape # 1150J, 11" high (restored); a blue glaze plant pot, of oblong outline, moulded with floral panels, shape # 957, 7¾" wide. (2)
417. A Bretby pottery green glaze sleeve vase, moulded with a Japanese pastoral landscape, shape # 959, 10" high; two green glaze moulded jardinières.
418. A Bretby pottery green glaze jardinière, moulded with lion mask and stylized plant forms, shape # 2200K, 7½" dia., a green glaze leaf moulded jardinière, shape # 2063E, 6¾" dia. (2).
419. A Bretby pottery green glaze jardinière, with dimple moulded body, shape # 1803H, 9" dia., two smaller green glaze jardinières (3).
420. A Bretby pottery bamboo and stork vase, on a moulded base, 11½" high, and a small green glaze coopered plant pot, shape # 2118D, 6" high (2).
421. A Bretby pottery green glaze vase, of bulb shape with two stylized handles, shape # 1622, 12" high; a green glaze bowl, circular with leaf and flower moulded detail, shape # 531H, 7½" dia.
422. A Bretby pottery green glaze small bowl, shape # 1951D, 6½" dia; a green glaze oblong planter with weave effect panels and faux bamboo framing, 11" wide.
423. An Aesthetic movement double-burner oil lamp, the ovoid pottery base polychrome printed with daisies, insects and ferns, supported in a brass frame with turned and mask uprights, on tripartite incurving base with relief cast floral medallion and scroll terminals, frosted glass shade, 23" high including chimney.
424. An Art Nouveau design green glass vase, with an everted rim over a circular tapering body, with moulded and applied stylized plant forms, 10¾" high.
425. A Bretby pottery green glaze plate, of waved oval outline, with three pottery biscuits to the well, shape # 1146, 10¾" wide; a Bretby pottery square planter, with canted corners, green/blue mottled glaze, 7¼" square; a Bretby pottery planter, of waved oblong outline, mottled blue glaze, 10¾" wide (3).
426. A thistle shape glass vase, possibly Monart, mottled turquoise with pink and blue inclusions, 8¼".
427. A green mottled Monart type glass table lamp base, 8½" high.
428. A 19thC fruitwood box, modelled as a leather bound book with engraved spine bands, with sliding front cover, 10" x 7".
429. A Royal Doulton Winston Churchill Toby jug, D6171, designed by H. Fenton 9" high, issued 1941-1991.
430. A 19thC Staffordshire pottery figure, 'Will Watch', 15" high, some minor paint loss.
431. A pottery character jug, modelled as a jovial man in a black hat and jacket, holding a sign in his hand 'I am on the Black List', 11" high.
432. A 19thC Staffordshire pottery figure group, of two figures by a stream, under a bocage, 10" high.
433. A Wemyss pottery preserve pot and cover, plain circular, painted with black cherries and foliage, 4½" high, inscribed to underside T. Goode, London Wemyss.
435. A Pratt ware porter's mug, turquoise ground, with transfer printed reserves of rural scenes.
436. A Copeland late Spode encrrier, transfer printed and painted with floral decoration.
437. A W.M.F. Art Nouveau pewter specimen vase, with a green glass sleeve, 6" high.
438. A taxidermy pike, in a glazed case labelled 'Pike, Caught Old Trent, Date 1932, Weight 23lb'.
439. A glazed display of fish, labelled 'Caught at Cambridge'.
440. A glazed display of fish, labelled 'Caught at Cambridge'.
441. 'Hunting by Ear - The Soundtrack of Fox Hunting', illus. T. Ivester Lloyd, c/w 45rpm record.
- 441A. Brown & Amadon. 'Eagles, Hawks and Falcons of the World', detailed two-volume work of diurnal birds of prey, c/w slip case.
442. Staffordshire & Warwickshire 'Past & Present', (2) disbound.
443. Lodge. Peerage.

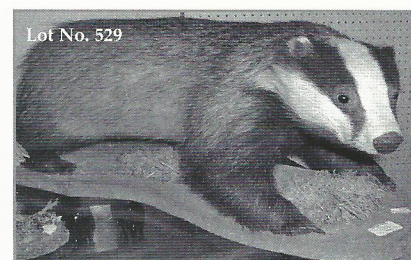
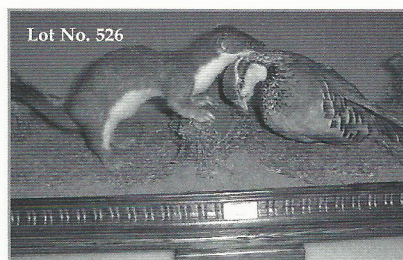
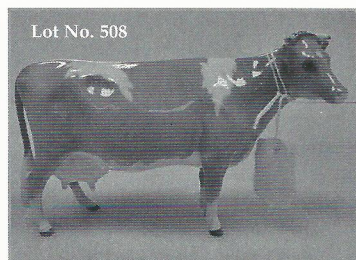


444. **Debrett's**. Peerage, 1913.
445. **Debrett's**. Peerage, 1828 (2).
446. **T. F. Dale**. *'The History of the Belvoir Hunt'* 1899.
447. *'My Hunting Sketchbook'*, written and illustrated by Lionel Edwards.
448. *'My Scottish Sketchbook'*, written and illustrated by Lionel Edwards.
449. *'British Sports & Sportsmen'*, 3 vols, gt leather.
450. **Percival (Robert)**. *'An Account of the Island of Ceylon... The Journal of an Embassy to the Court of Candy'* 1 vol, 1803, illus. folding map frontis. and two folding charts, full calf, re-bound with orig. boards, new spine and end papers.
451. **Salmon (William)**. *'The Family Dictionary or Household Companion'*, 1 vol. 1705, 3rd Ed. re-bound with orig. full calf, new spine and end papers; **Butler (Samuel)**. *'The Atlas of Modern Geography'* London 1822, 20 hand coloured country maps, inc. a folding map of the world, orig. marble boards.
452. **Bingley (William)**. *'Useful Knowledge or A Familiar Account of the Various Productions of Nature - Mineral, Vegetable and Animal'* 3 vols, 1825, 4th Ed. illus. plates, full calf; **Buckland (J)**. *'The Ready Reckoner or Trader's Most Useful Assistant'*, 1 vol. date partially missing, full calf; **Richardson (Samuel)**. *'The History of Sir Charles Grandison'*, 7 vols, 1812, ½ calf, some spine loss.
453. **Richardson (T. M.)**. *'Memorials of Old Newcastle Upon Tyne'* c. 1822, 43 b/w illustrated etchings, on India paper laid onto wove, some light foxing, cloth boards, poor.
454. **Batty (Robert)**. *'Select Views of Some of the Principal Cities of Europe'* 1 vol. 1832, 30 b/w illus. plates with opposing outline plates with references, slight foxing, cloth boards, top board detached.
455. *'British Sports & Sportsmen - Hunting'*, 1 vol, gt. leather, Royal Edition No 241/250.
456. A Victorian mahogany wheel barometer, with 7½" painted dial; 36" high.
457. A 19thC mahogany wheel clock barometer, with swan neck pediment, hygrometer, thermometer, over a timepiece with an enamel 4" convex dial, and 12" silvered dial, with bone bezel, the silvered level marked 'S. Bregazzi, Derby', 46" high.
458. An early 19thC warming pan, with ring-turned ebonised handle, and pierced copper cover.
459. An extensive collection of fishing rods, including split cane examples, fishing bag, and various reels.
460. A shield mounted taxidermy ram.
461. A Doulton Lambeth salt-glazed harvest jug, and another.
462. Boxed Naturecraft, 'Best of Breed', Ltd. Ed. Charolais cow and calf.
463. Boxed Naturecraft 'Best of Breed', Ltd. Ed. Aberdeen Angus cow and calf.
464. Boxed Border Fine Arts, otter group, stone base, 1980 L26 by David Geenty, Ltd.ed. 1 of 850.
465. Boxed Naturecraft 'Best of Breed', Ltd. Ed. Hereford Bull.
466. Boxed Naturecraft 'Best of Breed', Ltd. Ed. Charolais bull.
467. Boxed Border Fine Art, Flat Refusal no.BO 650, WWII motorbike and soldier with landgirl and cattle.
468. Boxed Naturecraft 'Best of Breed', Aberdeen Angus bull.
469. Boxed Naturecraft 'Best of Breed', Hereford cow and calf.
470. Boxed Border Fine Arts, B0649, 'Cut and Crated', signed by 'Ray Ayres Oct. '01', an Allis Chambers tractor pulling trailer with crated cabbages and figures.
471. Border Fine Arts, 'The Black Stallion Returns', by Fred Stone 1987, Ltd. Ed. 1500/3500.
472. Border Fine Arts, B0308, Holstein bull.
473. Boxed Clarecraft figure group, a pair of running greyhounds.
474. Boxed Border Fine Arts, Ltd. Ed. 435/950, Charolais bull by Jack Crewdson.
475. Border Fine Arts, B0276 - 'On the Lookout', 1998 Annual figure.
476. Border Fine Arts, B0502 - Barn owl, bronze figure.
477. Border Fine Art, a figure group - swan and cygnets.
478. Boxed Border Fine Arts, B0799 'Golden Memories
479. Boxed Border Fine Arts, B0197 Suffolk family group, Ltd. Ed. of 1250.
480. Boxed Border Fine Arts, B0338 'Pulling a Fast One



481. **Boxed Border Fine Arts, Ltd.** Ed. 124/750, Limousin bull by Jack Crewdson.
482. **Boxed Border Fine Arts,** Loggin, 228/1750, Ray Ayres.
483. **Boxed Border Fine Arts,** Ridging Up, signed on base by Ray Ayres Nov 2002.
484. **Boxed Border Fine Arts,** Tete a Tete, Kirsty.
485. **A Royal Doulton figure,** HN2492 - 'The Huntsman'.
486. **A figure,** of a black and white greyhound.
487. **Border Fine Arts,** a seated fox on rocks.
488. **Border Fine Arts,** # 147 - 'Resuming the Journey', a duck in flight.
489. **A David Ginty,** figure of a hound, Ltd. Ed. 79/250.
490. **A Beswick figure,** Old English sheepdog, # 2232, grey and white, gloss.
491. **A set of six Dominion china Ltd. Ed. plates,** by Donald Pentz.
492. **A painted Hereditaries,** hunting figure group - 'Over the Fence' Ltd. Ed. # 468/500, by Rob Donaldson.
493. **A Royal Worcester figure** - 'The Polo Player' by Doris Lindner.
494. **A Royal Worcester figure,** of an American Saddle Horse, Ltd. Ed. # 177, by Doris Lindner.
495. **A Beswick figure,** Clydesdale, # 2465, second version in show harness (some loss), chocolate brown, matt.
496. **A Beswick figure,** Shire mare, # 818, brown gloss.
497. **A Beswick figure set,** a Huntsman # 1501, together with one fox and four hounds.
498. **A Beswick figure,** mare, brown gloss, # 1991, second version.
499. **A Beswick figure,** Golden Retriever 'Cabus Cadet', # 2287, gloss.
500. **A Beswick figure,** black faced sheep, # 1765, gloss.
501. **A Beswick figure,** St. Bernard 'Corna Garth Stroller', #2221, gloss.
502. **An unmarked belted Galloway calf.**
503. **A Beswick belted Galloway bull.**
504. **A Beswick Ayrshire calf,** # 1249B.
505. **A Beswick Ayrshire bull,** # 1454B.
506. **A Beswick Ayrshire cow,** #1350.
507. **A Beswick Hereford calf,** # 1406B.
508. **A Beswick Guernsey cow,** # 1248B.
509. **A Beswick Guernsey bull,** # 1451.
510. **A Beswick Aberdeen Angus bull,** # 1562.
511. **A Beswick Aberdeen Angus cow,** # 1563.
512. **A bronze animalier group,** of copulating pigs, on oval stepped base; $4\frac{1}{2}$ " wide.
513. **A Pflueger Akron # 1893 multiplying reel,** 2" and a casting reel.
514. **A Bill Ballan Heirloom Classic $3\frac{1}{4}$ " reel.**
515. **A split cane four-section fishing rod.**
516. **A Millward split cane three-section fishing rod.**
517. **An early pair of binoculars,** by Carl - Zeiss, also marked 'Agents Ross Opticians 111, New Bond St, London', in original leather carrying case marked 'R. A. Markham Guards Club, S. W.' (E.W.V.S.).
518. **An early pair of binoculars,** by Ross London, Mill Hill 1917, in original leather carrying case.
519. **An early pair of binoculars,** by Ross London in original leather carrying case.
520. **An early pair of binoculars,** by L. Petit, Paris, leather clad bodies in original leather carrying case with note stating First World War field glasses.
521. **An early pair of binoculars,** by C.P. Goerz Berlin, in original leather case. Including a rare feature, i.e. brass enclosed compass fitted to top of leather carrying case.

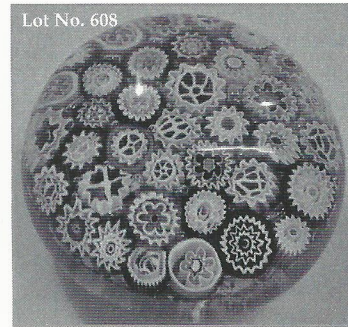
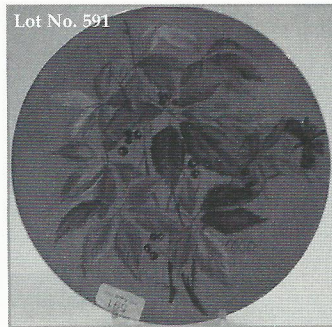
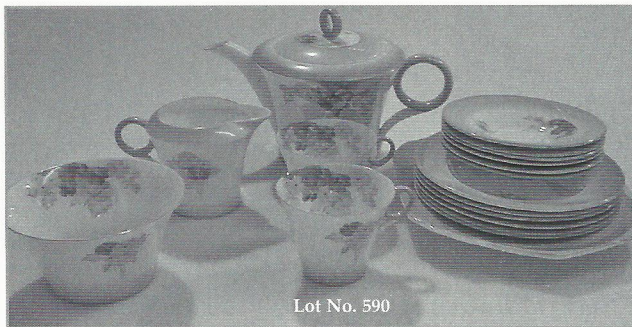




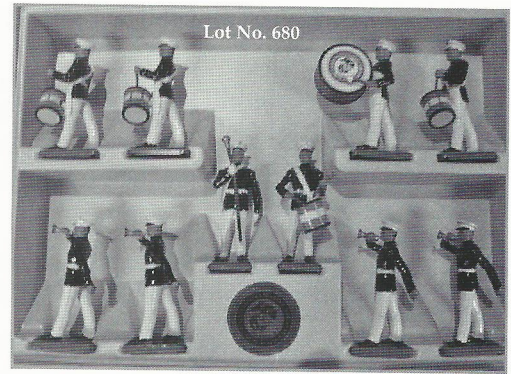
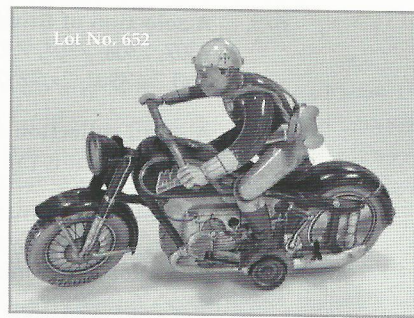
522. A leather cased tapering riding flask, with plated mounts.
523. A double coarsing lead.
524. A taxidermy French partridge.
525. A taxidermy fox cub.
526. A taxidermy stoat with a partridge, on plinth, 30" x 13".
527. A taxidermy thrush.
528. A taxidermy fox.
529. A taxidermy badger.
530. An early 19thC Boule desk stand, with cut crystal wells (AF).
531. An Edwardian oak table-dinner gong, with plated mounts.
532. An embossed brass girandole, with an oval diaperwork frame, with two twist scones, and oval bevel plate, 22" high.
533. A pair of oval embossed wall plaques, with three candle scones, and marked 'Ano. 1621', 19" high, and a further circular example.
534. An Edwardian brass coal box, with urn finial handle, ring handles, cavetto body and bun feet.
- 534A. A Victorian brass fender, with square section rails, foliate scrolling and moulded plinth.
535. A Newlyn School embossed copper half-round stick stand.
536. An embossed brass and copper log bucket, with lion mask ring handles, armorial and floral body, and raised on paw feet.
537. An early Siemen's X-Cel brass and copper portable electric fire, with reeded and gallery front, and a fire-front.
538. An early Petrolux two-colour cast-iron enameled stove.
539. A wrought-iron fire-side companion stand and tools.
540. A 1920's/30's chromium finished fireside set, comprising fender, coal box, and fire-screen.
541. Turned brass fire irons, and an embossed cylinder box.
542. A 19thC pierced brass fender.
543. A selection of lepidoptery specimens, some cased.
544. A Victorian copper kettle, with acorn finial.
545. A green painted railway hand lamp.
546. A black painted railway hand lamp.
547. A Miller's Cetolite lamp, with original box.
548. A George VI brass fire engine bell, suspension loop missing; 7½" high, 8½" dia.
549. A Persian brass fitted flint-lock pistol, 18".
550. A bayonet and sheath.
551. Sheaf knives etc., Spanish made hunting knife and leather cased combat survival knife and official Boy Scouts of America knife by Weston Boulder, U.S.A.
552. A Japanese katana and scabbard, the blade stamped 143213.
553. A 19thC Royal Fusilier's sabre, with lion mask hilt.
554. A cavalry sword, with ivorine and brass handle, brass scabbard, and the blade marked 'Manton & Co., England'.
555. RFD's ONLY - A Midland 20-bore double barrelled side-by-side hammer action shotgun. Ser # 62583, with canvas bag.
556. RFD's ONLY - A Charles Lancaster Patent 12-bore double barrelled side-by-side hammer action underlever shotgun. Ser # 3999.
557. RFD's ONLY - A Williams & Hughes 12-bore double barrelled side-by-side shotgun. Ser # 1247.
558. RFD's ONLY - A W. M. Stovin 12-bore double barrelled side-by-side hammer action under-lever shotgun. Ser # 55665.
559. RFD's ONLY - An S. W. Fuller 20-bore side-by-side hammer action shotgun. Ser # 91148.
560. A Webley & Scott 9mm single-barrel gun. Ser # 11743.
561. A 12-bore double-barrelled side-by-side shotgun, unknown maker. Ser. # 5203.
562. RFD's ONLY - A BSA 12-bore double-barrelled side-by-side shotgun. Ser. # 13358 - this gun needs repair to the clip under the barrels.
563. A Webley & Scott Mark III .22 air-rifle.
- 563A. A lined vinyl shotgun bag.



564. **A Colman's Mustard tin**, the hinged cover with Royal Crest, inscribed 'Manufacturers to the Queen', and with various landscapes to the sides, the interior with inner lid; 8½" wide. Also an early 20thC two-handed tray, oblong, the patera and ribbon swag design composed of coloured glass beads between glass panel, within a mahogany frame and brass handles; 25" x 10". Some damage.
565. **An Indian hardwood two-handed tray**, with ebony and bone inlay; 24" wide. Also A quantity of horse brasses, leather straps etc..
566. **A pair of Chinese brass incense burners**, each surmounted with the 'dog of Fo', and having panelled bodies with stylized birds and flora; 14" high.
567. **A Rolleicord twin-lens reflex camera**, and leather case.
568. **A Plaubel Peco Junior large format camera outfit**, cased.
569. **A 19thC electroplated urnular coffee pot**, with cast and engraved decoration.
570. **A 19thC rosewood Chuckrthums board and counters**.
571. **A hawthorn root 'Ali Sloper' stick**.
572. **A square section brass depth gauge**, with knob handle.
573. **A Philips in-car record player**, for 45rpm discs, together with a radio in a formica mounted box.
574. **A cased violin**, bearing a "Stradivarius" label.
575. **A cased violin**, no labels, strings, bridge, or pegs.
576. **A cased violin**, no label, strings or bridge.
577. **A cased violin**, with double string inlaid outline and string inlaid stylized two-part bat, no labels, with bow.
578. **A pewter ice bucket**, formed as the head of Neptune, encrusted with scallops and other shells, marked 'Figaro Pierro per Atena'.
579. **A Victorian oak and brass magazine rack**.
580. **A Continental majolica jug**, in the form of a dragon, 13" high.
581. **A 1:48 exact scale scratch built model of The RNAS Goosander**, a later Wild Duck class mooring, salvage and boom handling vessel; 48" wide, 21" high.
582. **A pair of Japanese shiviyama panels**, depicting figures within prunus trees, inlaid with ivory, bone, and lacquer, 34" x 17".
583. **A wall-mounted telephone and bell box**, with full modern conversion.
584. **A brass oil lamp**, together with further example, chimney, and spare Aladdin mantels.
585. **Eight Sumatra Austronesian scrimshaw buffalo bones**, finely etched with 360 day Islamic calendars, c.16".
586. **A set of twelve Chinese waterstones**, each carved with various scenes, signed.
587. **A Doulton Lambeth faience jardiniere**, painted, gilt and silvered with birds perched on foliage and stylized flowers against a matt ivory ground, the brown neck rim printed with a gilt repeat border of stylized flowers; impressed and printed factory marks, # 2583, 13cm dia.
588. **A 19thC Doccia candlestick**, modelled as a satyr astride a mythical beast, and holding a palm tree trunk supporting scroll candle sconce, on conforming base; 11¾" high.
589. **An electroplate three-bottle decanter stand**, with three overlay glass double spout decanters, each with a silver decanter label.
590. **A Shelley Phlox pattern tea service**, in blue; pattern # N12189.
591. **A Minton's cabinet plate**, hand painted with butterflies and berries on a turquoise ground, 10" dia., painted verso W. R., with references 4437 and 4256.
592. **A Japanese Satsuma square section jar**, painted with panels of port scenes and flora, signed to base, no cover, 3½" high.
593. **A Pratt ware pot lid**, transfer printed with a bear baiting scene, complete with base; 3" dia.
594. **A bronze figure**, of a naked figure holding a pig under his left arm, on oblong plinth; 4¾" high.
595. **Three German bisque figures of naked females**, 6".
596. **A Booth's fruit pattern pail**.
597. **A selection of Booth's dinner plates**, fruit patterned part tea set, etc.



598. **A selection of Booth's pottery**, including Real Old Willow part tea service, Lowestoft Deer serving dish, and tureen with cover and stand.
599. **Booth's fruit d'Orient plate**, jug and three others (5).
600. **A Victorian Staffordshire figure**, of a deer hunter in Scottish costume, 12" high (AF).
601. **A pair of 19thC German porcelain cabinet plates**, painted to the centre with courting couples in a landscape, the pierced border polychrome and gilt with flowers and diaper cells; faux Augustus Rex mark for Helena Wolfsohn, 9" dia.
602. **A Royal Worcester blush brown vase**, painted with berries by Kitty Blake, model 2491, year cipher 1938. 3" high.
603. **A Royal Worcester porcelain bowl**, painted with fruit by M. Price, with flare bowl, model 9534, year cipher 1940. 4¼" dia.
604. **A Royal Worcester cabinet trio**, painted with fruit, the plate signed A. Shuck. the saucer signed T. Lockyer, and the cup signed Rickets.
605. **A Troika pottery coffin vase**, signed Troika, Cornwall, A. J., 7" high.
606. **A Troika pottery slab vase**, marked Troika, P. B. to base, 4½" dia.
607. **A Moorcroft cabinet plate**, the tubelined decoration of hibiscus on a green ground, 10½" dia.
608. **A Muranese cog cane patterned paperweight**, 3½" dia., ground base.
609. **An upright flower paperweight**, possibly by Strathearn, a pink waterlily with lily pads over a floral cane included base, ground base, 3" dia. x 3" tall.
610. **A floral form millefiore paperweight**, probably Scottish, green, pink and white canes set in a pink 'jasper' ground to form a flower, yellow centred red flower to centre, pontil base, 2½" dia.
611. **A concentric paperweight**, black ground with jade green band and white twist border around mainly green, pink and blue floral canes, pontil base, 2½" dia.
612. **A large flower paperweight**, an abstract lime green and white flower over a red cushion air bubble base, 3½" dia., ground base.
613. **A large abstract bubble pattern paperweight**, with dark turquoise swirl, 3½" dia., 3½" tall, pontil base.
614. **A 19thC French rosewood marquetry mantel clock**, 9" high.
615. **An Edwardian mahogany bracket clock**, with caddy top, pendant husk pillars, and reeded feet, the silvered dial having Roman numerals and subsidiary strike silent and slow-fast dials, eight-day double fusee movement striking a gong, 14" high.
616. **A cast brass mantel clock**, surmounted with a lyre, and having a pierced case with cherubs supporting the silvered dial with Arabic numerals, eight-day movement striking a gong; 13" high.
617. **A cast brass mantel clock**, surmounted with an eagle, the case enclosing an enamel dial with Arabic numerals, and eight-day movement striking a gong; 18" high.
618. **A 19thC French porcelain figural mantel clock**, retailed by Tiffany and Co., New York, the floral rococo case embellished with pink flowers, cupids and a cherub with a cornucopia, 8-day movement striking a bell; 12" wide, 12" high.
619. **A rare 20thC electric timepiece**, by the Eureka Clock Company Ltd., London, patent # 14614-1906, # 2778, modelled in the form of a lantern clock, with strapwork bell frame and bell, within pierced and engraved dolphin pediments, the chapter ring having Roman numerals, with inside quarter's track and pierced steel hands, centred by a bevelled glass panel showing a visible movement, of typical form, with oversized and compensated pendulum, with battery mounting to the back door; 16" high.
620. **A pair of ormolu candlesticks**, of naturalist form, with stylized palm tree stems, the shaped base moulded with silvered birds; 9".
621. **A 19thC French portico clock**, the ebonised case having ormolu mounts to the columns, and swan and ribbon panels, the silvered dial having Roman numerals, and eight-day movement striking a bell, regulated by a pendulum in the form of an ormolu cherub in a swing, enclosed in a glass dome on plinth, overall height 26".
622. **A collection of Sotheby's furniture auction catalogues from 2002-2003.**
623. **Napoleon Bonaparte**, Premiere Consul de la Republique Francais - portfolio of topographical, portraiture, and battle scenes, in a tooled gilt cloth binding with leather spine.

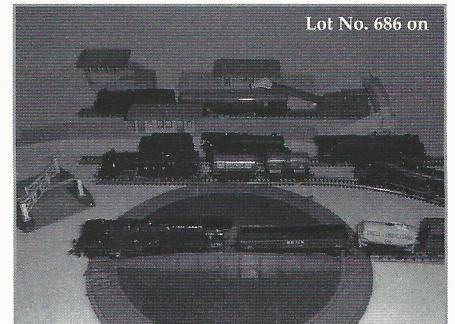
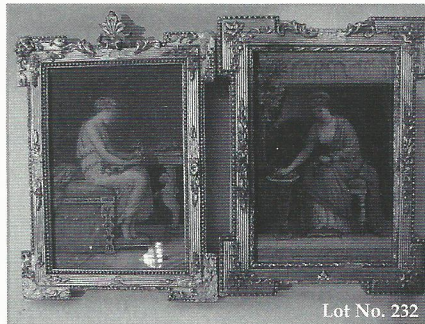


624. **A selection of Napoleonic period letters and correspondence.**
625. **Turnor, Edmund.** *'Collections for the History of the Town and Soke of Grantham'*, containing the authentic Memoirs of Sir Isaac Newton, printed for William Miller, Albermarle Street, by W. Bulmer & Co., St. James' 1806.
626. **Cruickshank, George.** *Scraps and Sketches*, Portfolio.
627. **Edward, Lord Hinchinbroke.** A hand coloured linear road map from London to St. Neot's, continued to Oakeham by Thos. Gardner, 8 x 12".
628. **A folio of watercolour sketches**, of characters from 'Gone with the Wind', together with other fashion sketches and works.
629. **A mixed post-card album**, containing topographical, humorous, and other subjects (album AF).
630. **'The Book of the Bench'**, with 39 reproductions in colour, from the paintings by Spy and other cartoonists, pub. James McKenzie Ltd.
631. **T. E. Lawrence.** 'Revolt in the Desert', pub. Jonathan Cape 1927, gt. cloth.
632. **Doyle, Richard.** 'The Foreign Tour of Messrs Brown, Jones & Robinson, being the History of What they Saw and Did in Belgium, Germany, Switzerland and Italy', gt. cloth.
633. **'The National Shakespeare'**, a facsimile of the cert. of the first folio of 1623, illus. Sir J. Noel Paiton R.S.A., pub. William McKenzie, Edinburgh and Dublin, tooled and gilt Morocco binding.
634. **An embroidered linen smock.**
635. **A World War II Nazi swastika banner.**
636. **Victorian scrap albums**, maps etc.
637. **Various bookplates**, etc.
638. **An Edwardian postcard album**, with mainly period and later topographical cards.
639. **A selection of loose topographical and other postcards**, together with travel books, maps, etc.
640. **A Brannam pottery vase**, spherical, with an everted rim, incised with stylized fish and seaweed in ochre and blue against a brown ground; 11¾" high (AF).
641. **A leaded glazed panel**, with a central robed fox cartouche; 67" x 42" to inside frame.
642. **A Brexton picnic hamper.**
643. **A brass fireside companion**, with tools.
646. **Two George III spade guineas.**
647. **An Edward I penny**, RX CIVITAS LONDON (1282-83?) North 1023?
648. **A Charles I farthing token**, Obv CARO DG MAG BRIT Type 1 e RX FRA ET HIB REX. Harp Peck 199., and another. (2).
649. **A William III half crown of 1697**, Seaby 2742A.
650. **A George V half sovereign**, 1912, in a pendant mount.

TOYS

651. **An Edwardian pull-along composition horse and trap** with bamboo and brass fittings, and bearing the label A. W. Spencer, St. John's Square, Cardiff.
652. **A tin plate clockwork motorcycle**, made in Germany, MAC 700.
653. **A tin plate clockwork railway truck**, with porter, probably by Mettoy.
654. **A tin plate clockwork race game 'Speed Cop'**, by Louis Marx & Co. (box tired).
655. **Two yellow boxed Pelham puppets**, clown and Gretel.
656. **Two yellow boxed Pelham puppets**, gypsy and dragon.
657. **A collection of Meccano boxed sets**, 3A, 4A, 5, Inventors, 2A, 1A, Structator set 2 and a Majic Compendium.
658. **A set of John Tunstall Soldiers Soldiers**, Fusilier Regts 1880-1914.
659. **A set of John Tunstall Soldiers Soldiers**, Fusilier Regts 1880-1914.
660. **A set of John Tunstall Soldiers Soldiers**, Foot Guards 1880-1914.
661. **A set of John Tunstall Soldiers Soldiers**, Rifle Regts 1880-1914.

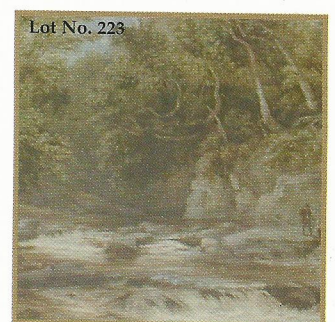
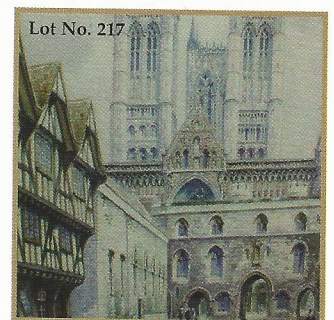
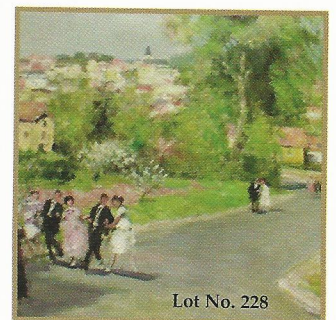
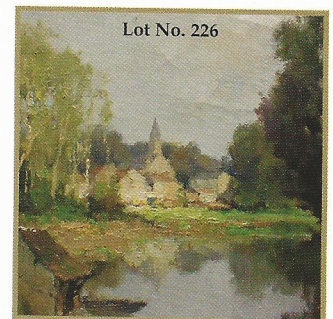
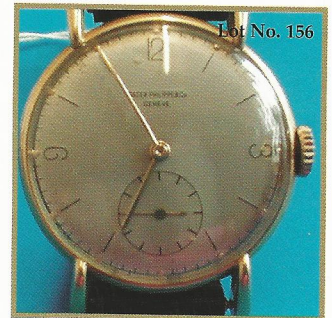
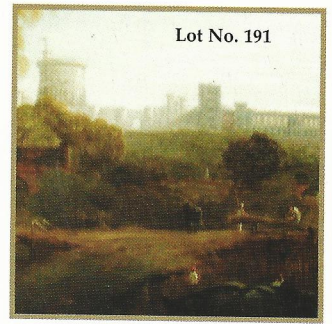
662. **A set of John Tunstall Soldiers Soldiers, Rifle Regts 1880-1914.**
663. **A set of John Tunstall Soldiers Soldiers, Rifle Regts 1880-1914.**
664. **A set of John Tunstall Soldiers Soldiers, Foot Guards 1880-1914.**
665. **A set of John Tunstall Soldiers Soldiers, Line Infantry, Home Service Helmet 1880-1914.**
666. **A Britain's Ltd. Ed. 4247/7000, The Royal Dragoon Guards.**
667. **A Britain's boxed set 1997, The Queen's Colour Squadron, The Royal Air Force Regiment, Collector's Edition plus extra airmen.**
668. **A Britain's boxed set, 1996 Collector's Edition, The Sherwood Foresters Regimental Band.**
669. **A Britain's Circus Ringmaster and billboard, boxed.**
670. **Boxed Meccano sets, 1, 1A and clockwork motor 1A.instructions, 1A, 2A and 00, red boxed Meccano set 3A and a live steam engine.**
671. **A Simon & Halbig bisque headed doll, marked Halbig, S. & H. 1079, Germany 15.**
672. **Three stamp albums.**
673. **A collection of Fleishmann Piccolo trainset, inc. 7160 Loco, carriages, rolling stock, scale building, track, accessories, etc., books, and layout dressing.**
674. **A Grantham signal box indicator strip, pen, and West Hartlepool name plate.**
675. **A selection of Britain's metal models, sets # 7218, 7307, 7306, 7304, 7303, 7249, 7241, 7242, 7231, 7246, and 2x 7302, 2x 7237, 2 x 7245, 4 x 7247, 6 x 7244.**
676. **A small collection of lead soldiers, mounted on wooden plinths (5).**
677. **A Dinky 956 Turntable Fire engine, a Dinky 968 BBC TV Roving Eye vehicle, a Dinky B. O. A. C. coach 283 and miniature tractor, two aero engines, and a military vehicle.**
678. **A quantity of Britain's New Metal models, various figures on plastic backing (9).**
679. **Britain's Collection set 5802 York & Lancs. regiment.**
680. **Britain's Collection set 5799, Fleet Marine.**
681. **Britain's Collection set 5803, Duke of Wellington's Regiment.**
682. **Britain's Collection set 5800, The Green Howards.**
683. **Britain's Special Collectors boxed set, the 15th Ludhiana Sikhs.**
684. **Britain's Special Collectors boxed set, The Queen's Own 4th Hussars.**
685. **Meccano part sets, boxed; #5, #3M and two #3.**
686. **An extensive private collection of Hornby Dublo; comprising over 20 locomotives, many boxed pieces of rolling stock, buildings, turntables, track, etc. to be split into suitable lots as listed on our website catalogue.**



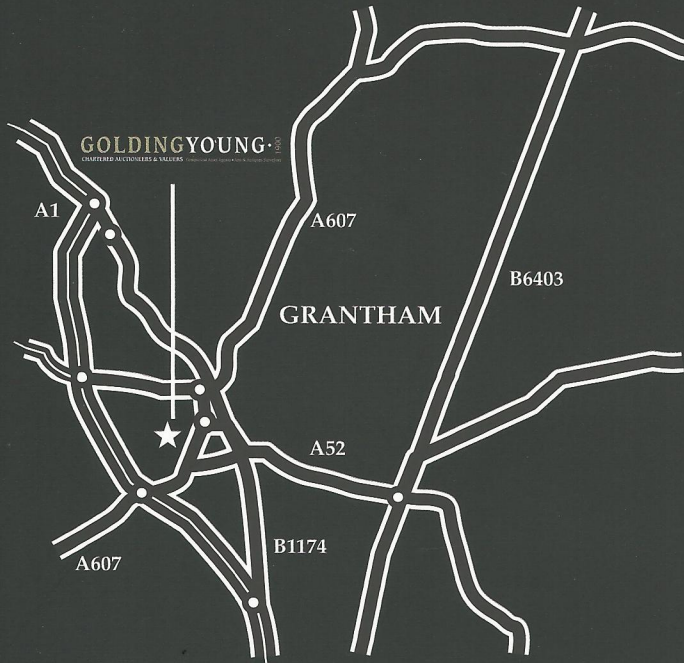
CONDITIONS OF SALE

1. These Conditions together with any Notices to Purchasers are the only terms and conditions subject to which Golding Young & Co ("the Auctioneers"), as agents for the Vendor will sell goods to a purchaser ("the Bidder") and all other conditions, whether express, or implied at common law or by statute as are capable of lawful exclusion are hereby excluded.
2. The highest bidder shall be the buyer. The Auctioneers reserve the right of regulating the biddings; of rejecting any bid; and of bidding for, withdrawing, consolidating, dividing or altering the order of lots.
3. The purchase money for each lot with the usual commission of 15% (with a minimum of £1 per lot) plus VAT at the current rate shall be paid at the fall of the hammer (if required). Each lot at the fall of the hammer shall be at the sole risk and expense of the buyer, and shall be paid for and removed immediately after the conclusion of the sale, but no lot shall become the property of the buyer, or be removable until paid for, and if taken away in contravention of these conditions without an order for removal signed by the Auctioneers, they shall have power to seize the same by their servants or agents, or otherwise, or the Auctioneers may recover either the lot sold or the price thereof (at their option) by action at law.
4. No contra account of any description whatever will be allowed to the buyer as a set off, and payment for each Lot shall be made to the Auctioneers or their clerk only, and a buyer paying by cheque must give satisfactory references.
5. For all purposes of this sale the Clerk of the Auctioneers shall be deemed to be the agent of both seller and buyer.
6. A bidder shall not be allowed to retract his bidding after the fall of the hammer, and he shall give up his full name and address if required. The Auctioneers will not recognise the transfer of any lot from one buyer to another, nor make any alteration in the sale book in respect thereof.
7. The Auctioneers are acting only as agents, and give no personal warranty as to the condition, quality or authenticity of any chattels offered for Auction. Any catalogue description is given merely as guide to purchasers, any description can be changed from the rostrum before the lot is sold. If a purchaser buys without previous inspection he will do so at his own risk.
8. Notwithstanding any other terms in these Conditions, if within 7 days of the Sale a purchaser gives notice in writing that a lot is a deliberate forgery, with supporting factual evidence, the Auctioneers may rescind the transaction. The burden of factual proof lies with purchaser, mere opinions will not satisfy. This benefit is not assignable.
9. If any buyer neglect or refuse to comply with the above conditions or any of them, his deposit money (if any) shall be forfeited, and the lot uncleared may, at the option of the Auctioneers, be resold without notice by public auction or private treaty, and any loss occasioned by such re-sale together with all expenses attendant thereon, or arising under these conditions shall be paid for by the defaulter and be recoverable as and for liquidated damages. This condition is however without prejudice to the right of the Auctioneers to enforce the contract made at this sale if they think fit.
10. Any Notes for Purchasers and Catalogue Glossaries will be construed as Conditions of Sale.
11. The Auctioneers shall be the sole Arbitrators in all matters of dispute relating to those conditions both as between the seller and the buyer and between the several bidders and buyers and their determination on all matters shall be final and binding on all parties concerned.

Back cover illustration Lot Nos. 15, 171, 227 and 33



How to find us



By Road

From whichever direction you approach Grantham, you can find us if you observe the following rules: Follow signs for Town Centre. Follow signs for Railway Station. At the roundabout leading to "Station Road", continue around to a double viaduct/ railway bridge. Take the right hand arch which leads into Old Wharf Road.

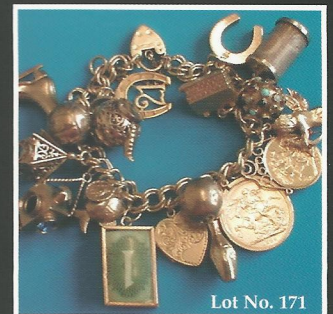
The Salerooms are the first building on the right. There are parking and loading bays in front of the premises.

By Train

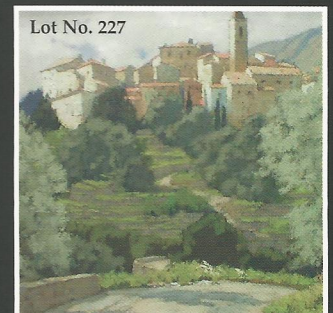
The auction house is situated very closely to the Railway Station, which is served by the East Coast Main Line. Trains run approximately every 20 minutes from Kings Cross during peak times.



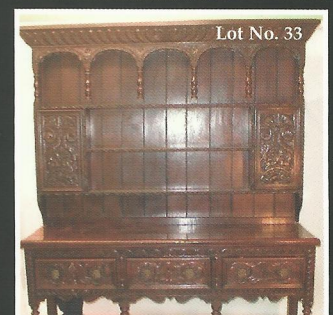
Lot No. 15



Lot No. 171



Lot No. 227



Lot No. 33

WWW.GOLDINGYOUNG.COM

GOLDING YOUNG • 1900

CHARTERED AUCTIONEERS & VALUERS Commercial Asset Agents • Arts & Antiques Surveyors

Golding Young & Co., Old Wharf Road, Grantham, Lincolnshire NG31 7AA

Telephone: 01476 565118 Fax: 01476 561475 Email: enquiries@goldingyoung.com