

EST
1864

GOLDING YOUNG

Fine Art Sale

Wednesday 22nd November 2017



CHARTERED AUCTIONEERS & VALUERS • ARTS & ANTIQUES SURVEYORS

PROBATE – INHERITANCE TAX ASSESSMENT

For many Executors and Trustees the responsibility of dealing with a deceased's Estate is a once-in-a-lifetime experience. You have to make a number of important decisions in a very short space of time and all when the loss is most difficult to come to terms with.

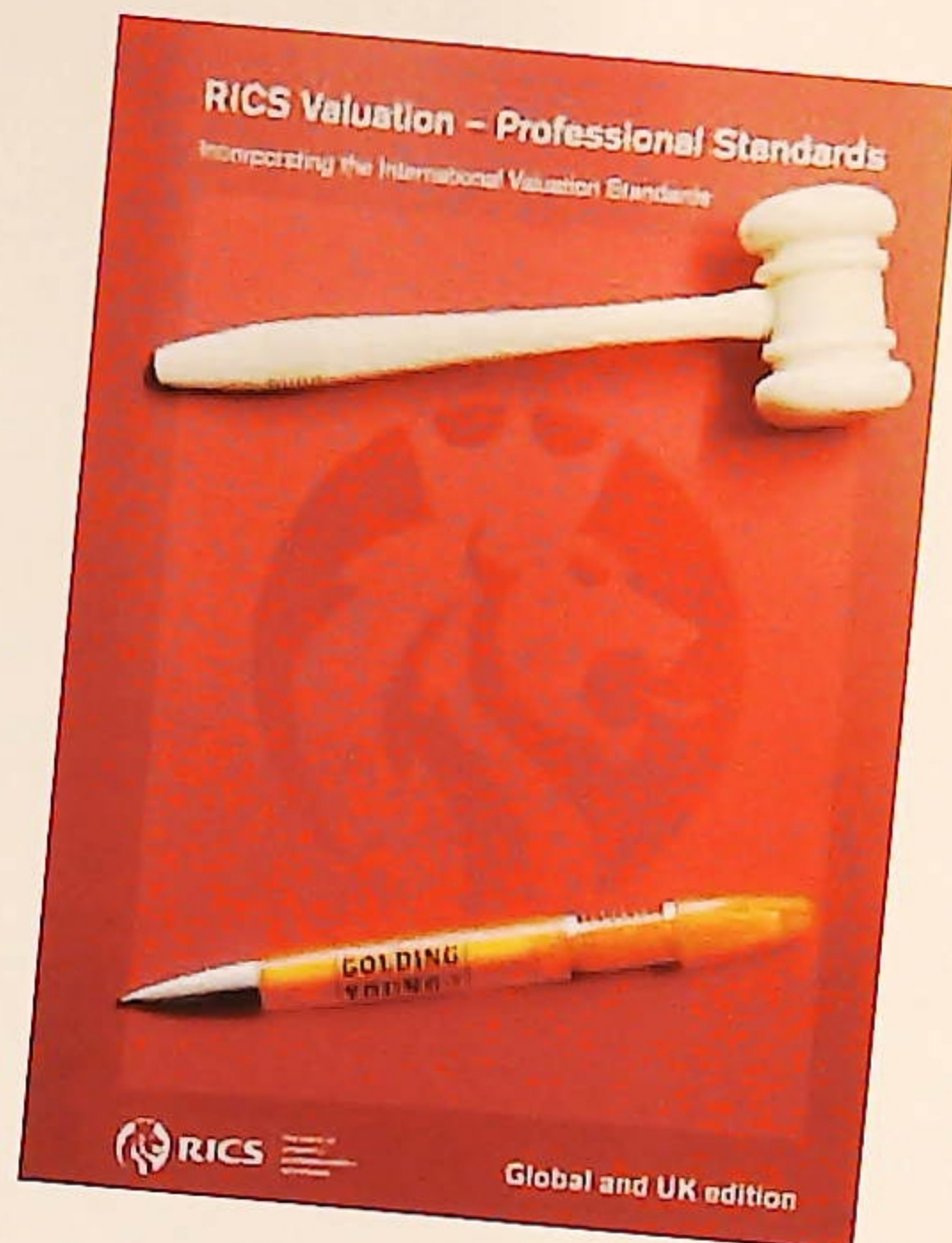
The position of Executor is an important one in law and has defined personal liability and responsibility. To exhibit due diligence to beneficiaries and more importantly HM Revenue & Customs, an Executor or advisor will instruct a firm Regulated by RICS.

Even if the estate will be taxed at 0%, a valuation remains an essential tool for an Executor. The inventory will still be used for identification of bequests, trust items, family division and proof of value.

Our valuations are prepared to the International Valuation Standards requirement of the 'Red Book'.

The report will cover sections of:


- Jewellery
- Vehicles
- Antiques, Fine Art & Collections
- General Furniture & Effects



For initial advice contact the following Chartered Auctioneers & Valuers:

Bourne, Stamford & South
Colin Young MRICS
01778 422686

Grantham, Lincoln & North
William Gregory MRICS
01522 524984




**Removals – Household
& Commercial**

- Free Quotations
- Full Packing Service
- Suppliers of Packing Materials
- Shipping & Storage Arranged
- Antiques & Fine Art Specialists
- Specialist Piano Movers
- Office Movers

Contact Andrew Lowes on 07970 742577 for a quote
or email lowes@goldingyoung.com

goldingyoung.com



PRIVATE CLIENT & PROFESSIONAL SERVICE DEPARTMENT

We value personal property for private and corporate clients. Our team have valued family heirlooms, art collections and museum holdings for a variety of purposes.

We are the only auction house in the region to have a bespoke Private Client Department with:

- Three Chartered Arts & Antiques Surveyors
- Two RICS / Antiques Trade Gazette professional assessment award-winning valuers
- Two In-house qualified jewellery valuers
- Experience in abundance and diversity since 1864
- Ten professional staff with RICS, NAVA or SoFAA qualifications.

Autumn reView

The Bourne Auction Rooms



Sold for £1,300



Sold for £2,500



Sold for £1,400



Sold for £750



Sold for £1,300

The Grantham Auction Rooms



Sold for £2,200



Sold for £1,100



Sold for £4,000



Sold for £4,100



Sold for £3,000

The Lincoln Auction Rooms



Sold for £3,600



Sold for £3,300



Sold for £7,500



Sold for £5,200



Sold for £2,200

FORTHCOMING EVENT

Reunion Exhibition 11th – 23rd December

18 Artists Celebrating One Gallery

Sam Scorer Gallery, 5 Drury Lane, Lincoln LN1 3BN

Further information can be found at samscoregallery.co.uk and goldingyoung.com

Paintings, Drawings & Sculpture

Any statement as to authorship, attribution, origin, date, age, provenance and condition is a statement or opinion and is not to be taken as a statement or representation of fact. Golding Young & Mawer reserve the right, in forming their opinion, to consult and rely upon any expert or authority considered by them to be reliable.

A picture catalogued with the forename(s) and surname of the painter is in our opinion a work by that artist; e.g. Joseph Mallord William Turner. When an artist's forename(s) is not known, a series of asterisks followed by the surname of the artist, whether preceded by an initial or not, indicates that in our opinion the work is by the artist.

1. **Attributed to....** is in our opinion probably by the artist.
2. **Studio of....** is in our opinion a work from the studio of the artist which may or may not have been executed under his direction.
3. **Circle of....** is in our opinion a work of the period of the artist executed under his immediate influence.
4. **Follower of....** is in our opinion a work by a painter working in the artist's style, contemporary or nearly contemporary, but not necessarily his pupil.

5. **Manner of....** is in our opinion a work in a style related to that of the artist, but of a later date.
6. **School....** is in our opinion the picture was executed at that time and in that location.
7. **After....** is in our opinion a copy of any date after a work by that artist.
8. The term **signed** and/or **dated** and/or **inscribed** means that in our opinion the signature and/or date and/or inscription are from the hand of the artist.
9. The term **Bears signature** and/or **dated** and/or inscription means that in our opinion the artist's name and/or date and/or inscription have been added by another hand.
10. All references to signatures, inscriptions and dates refer to the present state of the work.
11. Dimensions are given height before width.

Artist's Resale Right Scheme (Droit de Suite)

Following the UK's implementation of the EU Artist's Resale Right directive in February 2006, living artists are entitled to receive a resale royalty each time their art work is sold in the UK by an art market professional, subject to certain conditions. In January 2014 this has been extended to the sale of works of art of artists who have died in the previous 70 years, despite the wishes of the British Art Market Federation and other professional bodies. This payment is calculated on qualifying works of art which are sold for a hammer price or best bid price of more than EUR 1000. The UK sterling equivalent of EU 1000 will fluctuate in line with prevailing exchange rates.

The actual qualifying threshold will be calculated by the Artist's Resale Right Service Hub based on the European Central Bank reference rate published at 2.15pm on the day of the sale.

The royalty charge will apply if the hammer price is more than the UK sterling equivalent of EUR 1000. The royalty charge will be added to buyer invoices and must be paid before items can be cleared. No handling costs or additional fees with respect to these charges are retained by auctioneers despite us having to undertake all of the extra and considerable administration work. This sum is then paid by us to a 'not-for-profit' collecting society, who will actually extract their administration fees. Any residual amount may go to benefit the artist.

Portion of the hammer price (Euro's EUR)	Royalty rate
1000 to 50,000	4%
50,000.01 to 200,000	3%
200,000.01 to 350,000	1%
350,000.01 to 500,000	0.5%
Exceeding 500,000	0.25%

VAT is not payable on this royalty charge. A maximum royalty charge is 12,500 EUR. Revised 4th January 2011.



Sold in our August Art Sale
for £5,000



SOCIETY OF FINE ART AUCTIONEERS AND VALUERS



The Lincoln Art Sale

Wednesday 22nd November 2017

**At The Lincoln Auction Rooms
Viewing & Selling in The Gallery
At Thos Mawer House
Sale commences at 6pm**

Viewing: Sunday 19th 2pm-5pm
Tuesday 21st 10am-4pm
& saleday from 2pm.

Bid online or simply watch the sale live at



All enquiries to William Gregory MRICS on 01522 524984

Front cover image: Lot 7 Campbell Archibald Mellon (1876-1955)
Gorleston on Sea - beach and harbour scene,
oil on canvas, signed, 35cm x 45cm

Lincoln Fine Art Sale



▲ 1.
Colin Carr (1929-2002)
Lincoln Railway Station,
watercolour, signed and dated
(19)80, 35cm x 51cm
£200-300



▲ 4.
William Apap (1918-1970)
Portrait of a young girl
holding a flower, oil on canvas,
signed and dated (19)60,
60cm x 46cm
£300-500



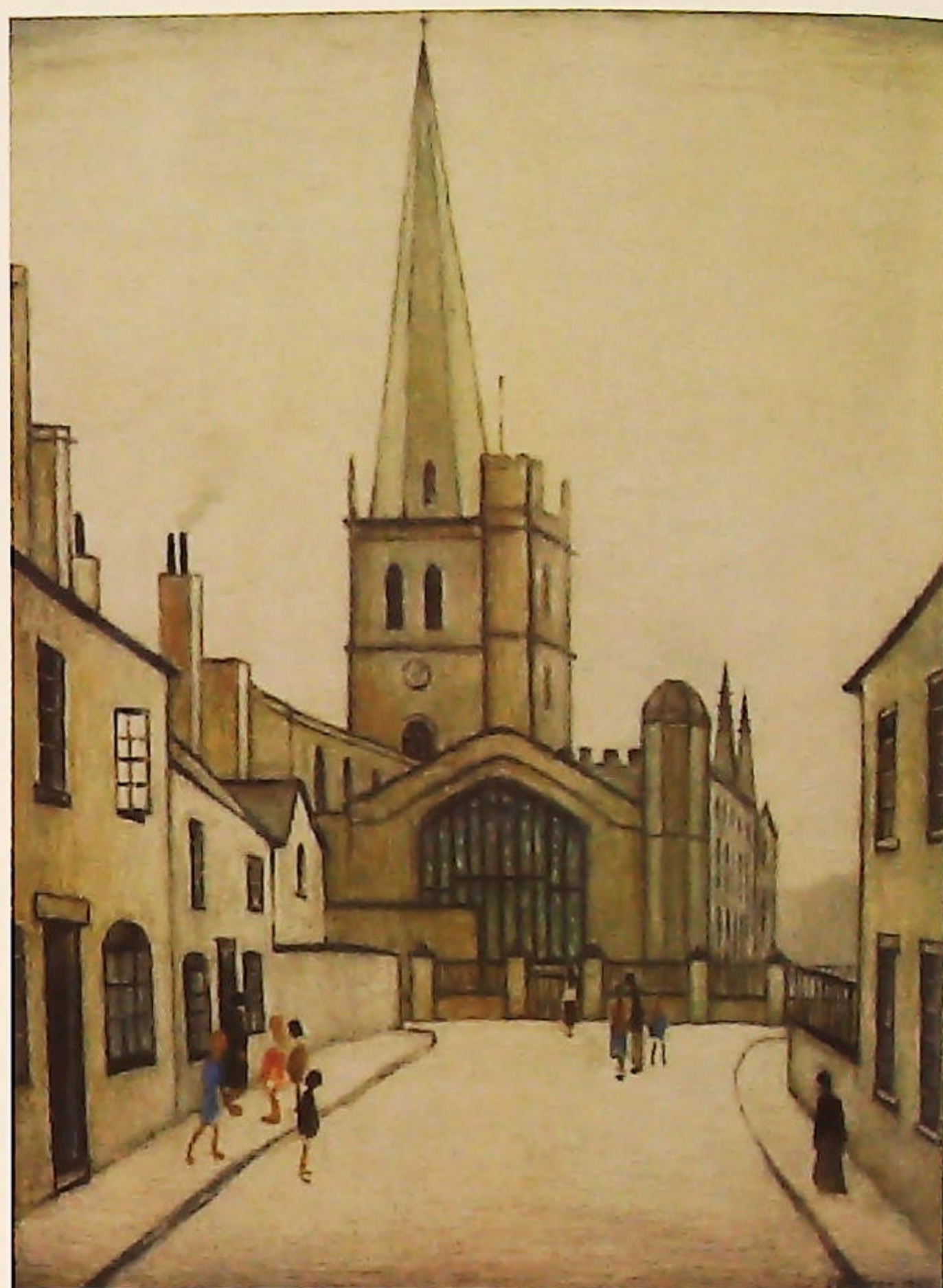
▲ 2.
After Peter Paul Rubens
Head and shoulders portrait,
oil on canvas, 49.5cm x 38cm
£200-400



▲ 3.
**Walter John Beauvais
(1942-1998)**
Sur La Plage Cannes, oil on
canvas, signed and titled
verso, 29cm x 44.5cm
£300-500



▲ 6.
After Domenichino
Communion of Saint Jerome,
oil on canvas, inscribed verso
Comunion di S Girolamo
Domenichino Roma Galleria
Valicana, copia di B Pozzi,
141cm x 85.5cm
£400-600



▲ 5.
Laurence Stephen Lowry (1887-1976)
Burford Church, artist signed limited edition coloured print, 521/850,
63cm x 47cm
£1000-2000



▲ 7.
Campbell Archibald Mellon (1876-1955)
Gorleston on Sea - beach and harbour scene, oil on canvas, signed,
35cm x 45cm
£1000-1500

Note on Estimates:

New ASA guidelines have now been published regarding estimates and fees because ONE complaint was made. There are multi-millions of lots sold every year without such complaint. As for the last 153 years (without complaint) our Buyers Premium is set out in full clarity on page 22 of this catalogue. The Artists Resale Right is set out on page 4 but has less clarity as it was written under an EU directive.

As at the time of printing, lots without estimates are to be sold without reserve, at auctioneer's discretion. See online catalogue for updates.



▲ 8.
David Waller (20thC)
Black labrador, oil on canvas,
signed, 44.5cm x 60cm
£50-100



▲ 9.
Robert Alexander Hillingford (1828-1904)
An Artist Studio, oil on canvas,
initialled, 30cm x 40.5cm
£500-700

10.
Israel Zohar (b.1945)
Carmen, oil on canvas, signed and
dated (20)04, 60.5cm x 75.5cm
Provenance: Spencer Coleman
Gallery



▲ 11.
Thomas Falcon Marshall (1818-1878)
Woodcutter, oil on board,
signed and dated 1856,
28.5cm x 38cm
Label verso J Leger & Son
London
£100-200



▲ 12.
John Rawson Walker (1796-1873)
Kenilworth, oil on board,
inscribed and titled verso,
35cm x 28cm
£300-400



▲ 13.
19thC Continental School
Landscape with figures, oil on
board, indistinctly signed,
41cm x 61cm
£100-200

14.
19thC Continental School
The Stolen Kiss, oil on metal
panel, 24cm x 20cm
£50-80

15.
19thC Continental School
The letter, oil on board,
20.5cm x 21cm
£50-80



▲ 16.
Julius Bayer (1840-1883)
River landscape with figures,
oil on canvas, signed,
35.5cm x 56.5cm
£150-250



▲ 17.
William Oliver (1823-1901)
The Lovers Letter, oil on
board, signed and dated 1890,
44cm x 34cm
£300-500



▲ 18.
Jane Maria Bowkett (1837-1891)
Country maiden with spinning
wheel, oil on canvas,
monogrammed, 85cm x 49.5cm
£400-600



▲ 19.
Van Haan (19th/20thC)
The card player, oil on board,
signed, 20.5cm x 23.5cm
£50-150



▲ 20.
19thC Continental School
Figures in mountain
landscape, oil on panel,
indistinctly signed,
22cm x 29cm
£200-300

▼ 21.
17thC Dutch School
Figures dining outside on hill,
oil on canvas, 37cm x 55.5cm
£1500-2000



Lincoln Fine Art Sale



25.
19thC British School
Working by the fire, oil on board,
24cm x 32cm

26.
Charles L Shaw
(act c.1880-1898)
Farmyard, oil on canvas, signed,
29cm x 44.5cm

27.
19thC Continental School
In the Tyrol 1850 and View on the
Tyrol 1850, oil on board, titled
verso, 19cm x 21.5cm (2)

▲ 22.
Walter Heath Williams
(1863-1918)
Children in country river
landscape, oil on canvas,
29cm x 24cm
£100-200



▲ 23.
Walter Heath Williams
(1863-1918)
Cattle in river landscape, oil on
canvas, 29cm x 24cm
£100-200



▲ 24.
Charles James Lewis
(1830/6-1892)
Thames near Chiswick/Kew
Richmond, oil on canvas,
signed, 49.5cm x 75cm
£300-400



▲ 28.
Karl Fuchs (1872-1968)
Berne, oil on board, signed and
titled verso, 23cm x 31cm
£150-250



▲ 29.
Salvatore Maresca
(19th/20thC)
Mountain riverscape, oil on
canvas, signed, 74.5cm x 61cm
£150-250

▶ 34.
19thC British School
Siblings, portrait, oil on canvas,
89cm x 69cm
£800-1200



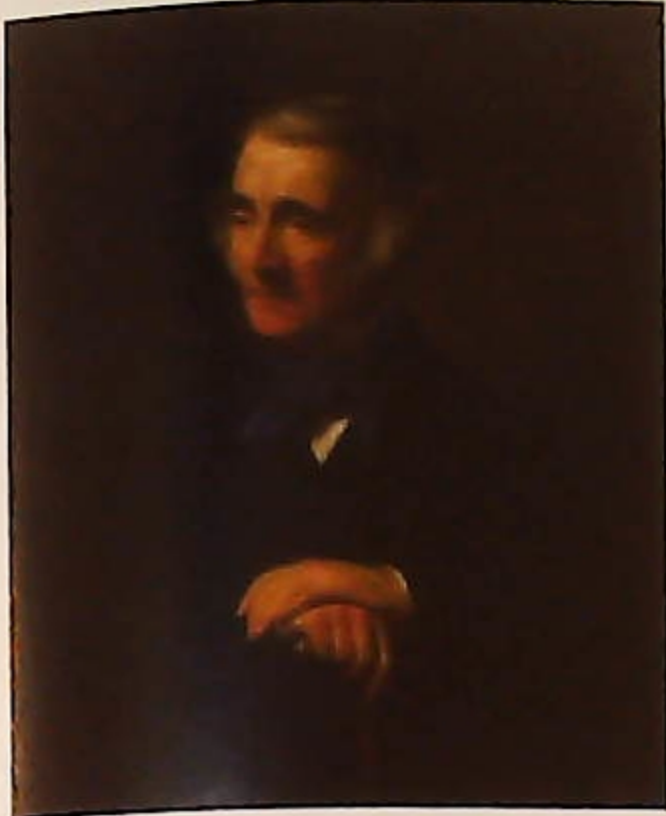
▲ 30.
Eugene Benjamin Fichel
(1826-1895)
Gentleman reading, oil on
board, signed and dated 1861,
21cm x 16cm
£200-400



▲ 31.
Eugene Benjamin Fichel
(1826-1895)
Gentleman in front of the
mirror, oil on board, signed
and dated 1861, 21.5cm x 16cm
Label verso J Leger & Son
London
£200-400

32.
David Haire (19th/20thC)
River landscape - Perthshire, oil
on canvas, signed, titled and
dated (18)83, 29cm x 44.5cm





▲ 33.
Norman Macbeth (1821-1888)
Portrait of a seated gentleman, oil on canvas, signed and dated 1872, 90cm x 75cm
£300-400



▲ 35.
19thC British School
Maiden with cherubs, oil on canvas, 76cm diameter
£300-500

36.
Stephen E Hoyle (act.1874-1893)
Near Boot Cumberland, oil on canvas, signed and titled verso, 29cm x 49.5cm
£50-80



▲ 38.
Joseph Eaman (1853-1907)
Shipwreck off the coast, oil on canvas, signed, 39.5cm x 60cm
£100-200

39.
19thC Continental School
Mountain river landscape, oil on canvas, 24cm x 34cm

40.
Circle of Matthew William Peters (1741-1814)
Head and shoulders portrait of a young woman, oil on canvas, stencil mark verso, 56cm x 48cm.

41.
Edwin St John (act.1880-1920)
Coastal scene, watercolour, signed, 25cm x 44.5cm

42.
19thC Continental School
River landscape with figures and windmill, watercolour, 32cm x 46.5cm



▲ 37.
Henry Andrew Harper (1835-1900)
Mount Hermon and the Sea of Galilee, watercolour, signed and dated 1882, 50cm x 74.5cm
Gallery label verso
£1000-2000

43.
R J Reynolds (19thC)
Morning in Savoy, watercolour, signed, dated 1853 and titled verso, 57cm x 48cm

44.
John Reginald Goodman (1870-1962)
Rural scene with figure, watercolour, signed and dated (18)99, 24cm x 34cm

45.
19thC British School
Estuary scene with fishing boats and village, watercolour, indistinctly signed, 25.5cm x 35cm
£30-50

46.
Edwin St John (act.1880-1920)
Coastal scene, watercolour, initialled, 19cm x 47.5cm

47.
Edwin Thomas Dolby (act.1849-1895)
Burgos, Spain, watercolour, signed and dated 1897, 45cm x 28.5cm

48.
John Joseph Hughes (1850-1908)
Wast Water, oil on canvas, signed and titled verso, 50cm x 75.5cm
£30-50



▲ 50.
Daniel Sherrin (1868-1940)
Woodland landscape with figures, oil on canvas, signed, 60cm x 105cm
£800-1200



▲ 49.
19thC British School
The Kingmaker, oil on board, titled verso, 17cm x 23.5cm
£100-200



▲ 51.
Salvatore Maresca (19thC)
Society Lovers, oil on canvas, signed, 39.5cm x 26.5cm
£200-300

Lincoln Fine Art Sale



▲ 51A.
Salvatore Maresca (19thC)
Peasant lovers, oil on canvas,
signed, 39.5cm x 26cm
£200-300



▲ 52.
Petrus Gerardus Vertin (1819-1893)
Street scene with figures, oil on
board, signed, 26cm x 29.5cm
£200-300

53.
19th/20thC British School
The Rose Bowl - still life,
watercolour, indistinctly signed,
66cm x 98cm



▲ 54.
Bernard Benedict Henry (1855-1913)
Coastal scenes, with fishing
boats and masted ships, oil on
board - a pair, signed,
22.5cm x 30cm
£200-400



▲ 55.
Alfred H Vickers (1853-1907)
Continental lake scenes, oil on
board - a pair, signed,
14.5cm x 30cm
£200-300

56.
19thC British School
Fishing boats at sea, oil on board -
a pair, 18.5cm x 34cm



▲ 57.
19thC Continental School
Nobleman, watercolour,
indistinctly initialled and
dated (18)94, 18cm x 10cm
£50-100



▲ 58.
After Camille Jean-Baptiste Corot
Churchyard, oil on board,
21cm x 12.5cm
£150-250

59.
Filippo Grispini (19thC)
Portrait of a young girl, pastel,
signed and dated 1877,
66cm x 51cm



▲ 60.
Anatole Vely (1838-1882)
Lover across the stepping
stones, oil on board, label
verso, 25cm x 15cm
£150-250



▲ 61.
Madeleine Jeanne Lemaire (1845-1928)
Floral study - violets,
watercolour, signed,
17cm x 25cm
£100-200



▲ 62.
19thC British School
Regency figures, watercolour,
label verso Christie's London,
25cm x 42cm
£100-200

63.
19th/20thC British School
Sailing yacht at sea, oil on canvas,
26cm x 39cm

64.
Early 20thC British School
The Hunt - meeting, oil on canvas,
indistinctly titled verso,
49.5cm x 60cm

65.
Alexander Leggett (c.1828-1884)
Broughty Ferry Forfarshire, oil on
board, signed, titled and dated
1872 verso, 28cm x 42.5cm

66.
Giovanni Battista Lampi (1751-1830)
Gentleman feeding swans,
watercolour, signed, 29cm x 22cm
£50-100

67.
Frederick George Cotman (1850-1920)
Slapton Sands Nr Dartmouth,
watercolour, signed, dated 1890
and titled verso, 23cm x 17cm

68.
Frederick George Cotman (1850-1920)
Bridge and castle, watercolour,
signed and dated 1891,
22cm x 14.5cm

69.
19thC British School.
Highway coaching scenes, oil on board - three, 14cm x 28cm

70.
19thC British School.
Figures collecting wood, oil on canvas, 23.5cm x 28.5cm

71.
19thC.
Half length portrait of a maiden, oval gilt frame, 37cm x 29.5cm

72.
E J (19thC)
Children playing, oil on board, initialled, 24.5cm x 19.5cm

73.
P Proctor (19thC).
Coastal scene, with fishing boats and figures, oil on board, signed, 19cm x 37cm

74.
E Masters (19thC).
Woodland river scenes, oil on canvas - a pair, signed, 80cm x 44cm

75.
W H Earp (19thC).
Mountain lake scene, watercolour, signed, 53cm x 24.5cm

76.
A M Wood (19th/20thC).
Village lane, watercolour, signed and dated 1912, 25cm x 18cm

77.
19thC Dutch School.
Coastal scene with figures and sailing boats, oil on canvas, indistinctly signed, 48cm x 73cm

78.
19thC British School.
Shipping off the coast, oil on canvas, indistinctly signed, 39.5cm x 60cm

79.
M J Hicks (19thC).
Maiden by the water's edge, watercolour, signed and dated 1880, 26.5cm x 15cm
£40-60

80.
19th/20thC Continental School.
Dutch river scene with sailing ships, oil on board, indistinctly signed, 31cm x 38.5cm

81.
19th/20thC Continental School.
Dutch river scene with sailing ships, oil on board, indistinctly signed, 39cm x 48.5cm

82.
19th/20thC Continental School.
Dutch river scene with sailing ships, oil on canvas, 59.5cm x 79cm

83.
Campbell Archibald Mellon (1876-1955).
Beccles, oil on canvas, signed and titled verso, artist label verso, 50cm x 60.5cm

84.
Campbell Archibald Mellon (1876-1955).
Richmond Castle, river Swale, oil on canvas, signed, 49.5cm x 50.5cm

85.
Campbell Archibald Mellon (1876-1955).
River Wye, oil on canvas, signed, 49.5cm x 59.5cm

86.
Campbell Archibald Mellon (1876-1955).
River Ant Irstead Norfolk, oil on board, signed and titled verso, 21.5cm x 29.5cm

87.
Campbell Archibald Mellon (1876-1955).
Yat View, oil on board, initialled, 22.5cm x 30cm

88.
Campbell Archibald Mellon (1876-1955).
Hunset Mill Nr Stalham Norfolk, River Ant, oil on board, signed and titled verso, 28.5cm x 39cm

89.
Campbell Archibald Mellon (1876-1955).
Plum Tree Cottage Symonds Yat, oil on canvas, signed and titled verso, 39.5cm x 29.5cm

90.
Antonio ? (19th/20thC).
Promenade, oil on board, indistinctly signed, 25.5cm x 34.5cm



▲ 91.
20thC Continental School.
Paris river scene, oil on canvas, signed S Funnell, 43cm x 53.5cm
£100-200

92.
Daubigny (20thC).
Coastal scene, oil on board, attributed verso, label verso The Scottish Fine Art Group, 17.5cm x 21.5cm

93.
M Gianni (19th/20thC).
Italian harbour scene, watercolour, signed 48.5cm x 30cm

94.
M Gianni (19th/20thC).
Genoa Menaggis, watercolour, signed, 30cm x 47.5cm

95.
19th/20thC Continental School.
Monk mending shoes, oil on board, indistinctly signed, 28cm x 36cm

96.
Richard Parkes Bonington (1802-1828).
Dorrenstien on the Danube, watercolour, signed and titled verso, 10.5cm x 14.5cm

97.
19thC British School.
Extensive landscape view, oil on canvas, 38cm x 50.5cm



▲ 98.
Joseph Clarendon Smith.
River landscape, watercolour, 23cm x 32.5cm
£80-120

99.
Charles Harmony Harrison (1842-1902).
Haddiscoe Church, watercolour, signed and dated 1880, label verso The Little Gallery Norfolk, 28cm x 50cm
£40-60



▲ 100.
Colin Carr (1929-2002)
The Stonebow, watercolour, signed, titled and dated (19)86, 24cm x 23.5cm.
Provenance: J D Wheeldon & Sons
£100-150

101.
Colin Carr (1929-2002)
Castle Square, watercolour, signed, titled and dated (19)86, 21cm x 14.5cm
Provenance: J C Wheeldon & Sons
£50-80

102.
Colin Carr (1929-2002)
Lincoln, Roman Arch (Newport Arch), watercolour, signed, titled and dated (19)83, 25cm x 24cm
Provenance: J D Wheeldon & Sons
£50-80



▲ 103.
Colin Carr (1929-2002)
The Strait, watercolour, signed and dated (19)84, 34cm x 34.5cm.
Provenance: J D Wheeldon & Sons
£150-250

Lincoln Fine Art Sale



▲ 104.
Colin Carr (1929-2002)
Castle Square, watercolour,
signed and dated (19)83,
50cm x 34cm.
Provenance: J D Wheeldon &
Sons
£200-300

105.
After Colin Carr
Church and Manor,
Humberstone, coloured print and
three others (4)

106.
Keith Roper (b.1946)
Lincolnshire Coast, pastel, signed
and dated (19)95, titled verso,
24.5cm x 30cm

107.
Keith Roper (b.1946)
Humberstone Fitties Evening,
pastel/gouache, signed, dated
(19)95 and titled verso,
24.5cm x 30cm
Label verso - Lincolnshire Artists
Society

108.
Keith Roper (b.1946)
Riverside, Summer Evening,
pastel, signed, dated (19)95 and
titled verso, 22.5cm x 22.5cm
Label verso - The Bourne Gallery,
London

109.
Keith Roper (b.1946)
Lincolnshire Coast, pastel, signed
and dated (19)95, titled verso,
24.5cm x 30cm
Label verso The Barnes Gallery,
London

110.
Len Roope (1917-2005)
Lincoln from S.E., watercolour,
signed and dated, 18.5cm x 29.5cm

111.
Len Roope (1917-2005)
Farmstead, watercolour, signed,
23.5cm x 33cm

112.
Len Roope (1917-2005)
Western Fells, March,
watercolour, signed and titled,
18.5cm x 24.5cm

113.
Len Roope (1917-2005)
Crumnock Water, watercolour,
signed and titled, 18cm x 26cm

114.
Len Roope (1917-2005)
A Corner of Reeth, watercolour,
signed and titled, 20cm x 28.5cm

115.
**Vincent Haddelsey
(1934-2010)**
Prince of Wales Inn, artist signed
limited edition coloured print
12/30, 39.5cm x 54cm

116.
**Vincent Haddelsey
(1934-2010)**
D Smith Family Butchers, artist
signed limited edition coloured
print 13/20, 23.5cm x 30.5cm and
two others - carriage and paddle
steamers (3)

117.
**Vincent Haddelsey
(1934-2010)**
Home by Moonlight, oil on
canvas, initialled and titled verso,
23.5cm x 32.5cm

118.
**Vincent Haddelsey
(1934-2010)**
Horses in the paddock, artist
signed print, 21cm x 30cm and
four others (5)

119.
**Vincent Haddelsey
(1934-2010)**
Horse and trainer, artist signed
coloured print, 21.5cm x 31.5cm
and three others (4)



▲ 120.
Phil Bowman (b.1954)
Sketches of Spain, oil on
canvas, initialled and titled
verso, 80cm x 100cm
£350-450



▲ 121.
Peter Lightfoot (b.1932)
Craters, oil on canvas, signed,
dated 1975 and titled verso,
49cm x 101cm
£150-250

122.
Ash Buckingham (20thC)
Lincoln Cathedral, watercolour,
signed, 16cm x 30.5cm and another
- river landscape (2)
Artist label verso

123.
Ash Buckingham (20thC)
Donington on Bain watermill,
watercolour, signed, 30cm x 47cm
Artist stamp verso

124.
James Mason (20thC)
In the Cherry Orchard,
watercolour, signed and titled
verso, 23cm x 33cm

125.
E C Adams (20thC)
Lincoln Cathedral, oil on board,
signed and dated 1961,
40cm x 50cm

126.
19th/20thC British School
The Great Tower, Lincoln, oil on
canvas, titled verso, 29cm x 21.5cm

127.
**Wilfrid Rene Wood (British
1888-1976)**
Poultneue Hill, Galloway,
watercolour, signed,
24cm x 32.5cm.

128.
Robert Morden
Lincolnshire, hand coloured
printed map, 47.5cm x 51.5cm

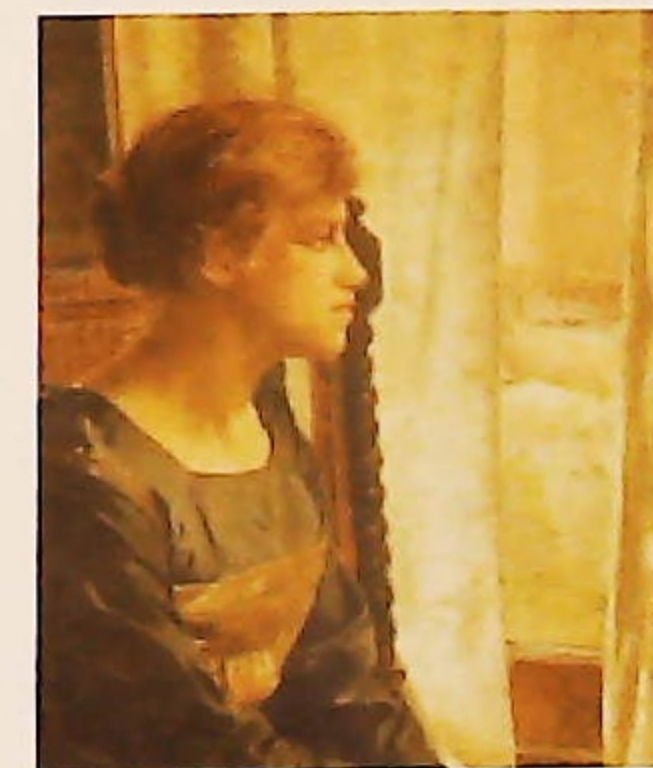
129.
After J Bucker
Iron bridge over the Witham,
Boston, Lincolnshire, coloured
engraving published 1808,
44cm x 56cm

130.
After Peter De Wint
River scene with barge and
figures, watercolour, bears
signature P De Wint, 21cm x 34.5cm

131.
After Peter De Wint
Farmstead, watercolour,
45cm x 64cm



▲ 132.
Peter De Wint
Salisbury Cathedral,
watercolour, 36cm x 30cm
£450-650



▲ 133.
**Thomas George Storey
(1865-1935)**
Study of a young woman, oil
on canvas, signed,
52.5cm x 42.5cm
Bears label verso
£150-250



▲ 134.
Thomas George Storey (1865-1935)
Landscape, oil on canvas, signed, 24.5cm x 34cm
Bears label verso
£50-100

135.
Joseph Smedley (1922-2016)
Excavation, oil on canvas, signed and dated 1983, 60.5cm x 60.5cm

136.
Joseph Smedley (1922-2016)
Mother and child, oil on canvas, signed verso, 33cm x 47.5cm

137.
Robin Wheeldon (b.1945)
Harvesting, artist signed coloured proof print, 33.5cm x 44.5cm

138.
Clive Browne (20thC)
South Ferry, oil on board, signed and titled verso, 24cm x 34cm
£50-100

139
Mark Huskinson (b.1935).
'Giving the Lads a Lead', artist signed coloured print, 27cm x 20cm

140
Robert Ixer (b.1940).
Cats, mixed media – a pair, signed, 59cm x 41.5cm

141.
James Frank Adams (1923-2008)
Studio works, oil on canvas, watercolours plus other artists (a quantity)

142.
James Frank Adams (1923-2008)
Studio works, watercolours, and other artists (11)

143.
James Frank Adams (1923-2008)
Studio works, watercolours, and other artists (9)

144.
James Frank Adams (1923-2008)
The Hunt, oil on canvas, signed, 67cm x 100cm, and another (2)

145.
James Frank Adams (1923-2008)
Studio works, oils (5)

146.
James Frank Adams (1923-2008)
Studio works, oils (6)

147.
Charles E Cameron (20thC)
River landscape with barges, watercolour, signed and dated (19)71, inscribed verso RSC Collingwood, Stamford School, 22cm x 29cm, and another (2)

148.
Spare Lot

149.
Spare Lot

150-185 - To be sold on behalf of the Usher Gallery Trust



▲ 155.
Peter Moss (b.1940).
Memento Mori, glazed ceramic, signed,



▲ 186.
Laurence Stephen Lowry (1887-1976)
Peel Park, artist signed coloured print, 41cm x 78cm
£2000-3000



▲ 187.
Laurence Stephen Lowry (1887-1976)
St Lukes, London, artist signed limited edition coloured print, 452/850, 64.5cm x 48cm
Label verso - Renoir Galleries Ltd., Harrogate
£1500-2500

Lincoln Fine Art Sale



▲ 188.
Laurence Stephen Lowry (1887-1976)
 The Beach at Deal, artist signed coloured print, 30cm x 53cm and 17.5cm x 25cm, with Venture Prints Ltd publication pamphlet
 £2000-3000



▲ 189.
Laurence Stephen Lowry (1887-1976)
 View of a Town, artist signed coloured print, 46cm x 55cm
 £2000-3000



▲ 190.
Laurence Stephen Lowry (1887-1976)
 The Level Crossing, Burton on Trent, artist signed coloured print, 44cm x 58cm
 £300-500

192
After William Russell Flint.
 In A Burgundian Granary, limited edition coloured print 276/850, 52.5cm x 68.5cm.
 £40-60

193
After William Russell Flint.
 Symposium at Lucenay, limited edition coloured print 724/850, 55.2cm x 70cm.
 £40-60

194
After William Russell Flint.
 Reclining Nude III, limited edition coloured print 177/850, 42cm x 59cm.
 £40-60

195
John P Cowan (1920-2008).
 The Portable Blind, artist signed coloured print, 53cm x 71cm



▲ 196.
Angus Bernard Rands (1922-1985)
 December landscape - Lintondale, oil on board, signed and titled verso, artist label verso, 29cm x 59.5cm
 £50-100



▲ 191.
Laurence Stephen Lowry (1887-1976)
 The Cart, artist signed coloured print, 52.5cm x 41cm
 £2000-3000



▲ 197.
Angus Bernard Rands (1922-1985)
 April skies near Appletrewick, oil on board, signed and titled verso, artist label verso, 28.5cm x 59.5cm
 £50-100



▲ 201.
Angus Bernard Rands (1922-1985)
 Knarborough, Nidderdale, Yorks, watercolour, signed and titled verso, 43cm x 64.5cm
 Bears label The Mall Galleries
 £50-100

198.
Angus Bernard Rands (1922-1985)
 Robin Hoods Bay, watercolour, signed and titled verso, artist label verso, 36.5cm x 53cm
 £50-80

199.
Angus Bernard Rands (1922-1985).
 Poppy landscape, pastel, 33cm x 49.5cm

200.
Angus Bernard Rands (1922-1985)
 Winter landscape, watercolour, signed, 36.5cm x 54cm
 £50-80



▲ 202.
John Hamilton (1919-1993)
 Fishing ship off Newfoundland, oil on board, signed, 44.5cm x 59.5cm
 Provenance: Spencer Coleman Gallery
 £100-200



▲ 203.
Les Parson (20thC)
Country children playing, oil on canvas, signed, 29.5cm x 39.5cm and another signed J F Parson (2)
£50-100



▲ 204.
Michael Smart (20thC)
View of Delft, oil on board, signed, 49.5cm x 75cm
Provenance: Spencer Coleman Gallery
£150-250

205.
Andre Beronneau (1889/96-1973)
Le Mourillon Pres De Toulon, oil on canvas, signed, titled and dated (19)54 verso, 45cm x 54cm



▲ 206.
Frances E Jamieson (1895-1950)
Highland landscape with castle, oil on canvas, signed, 50cm x 75cm
£100-200



▲ 207.
Jeremy Barlow (b.1945)
Ringstead Downs, oil on board, signed, 48.5cm x 59cm
£500-800

208.
Tom Dodson (1910-1991)
Black Pea Soup, artist signed limited edition coloured print 309/850, 34cm x 41cm

209.
Tom Dodson (1910-1991)
Morning Wash and Ironing, two artist signed limited edition coloured prints 647/850, 39cm x 28cm, (2)

210.
Helen Layfield Bradley (1900-1979)
Market Day, artist signed coloured print, 50cm x 71cm



▲ 211.
John Haskins (b.1938)
Shepherd with dog in landscape, oil on board, signed, 44cm x 59.5cm
£200-300



▲ 212.
Michael Smart (20thC)
Beneath the Monastery, oil on board, signed, dated and titled verso, 28.5cm x 39cm
£50-100



▲ 213.
Marisa Mallor (b.1942)
White Wine and Cloth, oil on board, signed, 28.5cm x 19cm
£200-300



▲ 214.
David John Leathers (b.1940)
Cherries with a silver jug and goblet, oil on canvas laid on board, signed and titled, dated 2013 verso, 19.5cm x 29.5cm
£50-100



▲ 215.
Alois Lecoque (1891-1981)
Montmartre, oil on canvas, signed, 49.5cm x 59.5cm
£200-300

216.
Percival A Bates (20thC)
The fisherman, oil on canvas, initialled and dated 1986, 49cm x 74.5cm



▲ 217.
René Rambert (1901-1991)
Paris street scene, oil on canvas, signed, 60cm x 91cm
£100-200

218.
Thomas Aldridge (20thC)
Ewan, oil on canvas, label verso National Portrait Gallery, BP Portrait Award 1995

219.
Ryan Cairns (20thC)
Venus and Mars, oil on board, 68cm x 172cm



▲ 220
Ken White (b.1943)
Canal Walk, oil on canvas, signed and dated (20)10, 60cm x 60cm.
£200-300



▲ 221.
Servando Del Pilar (1903-1990)
Fruit and flowers still life, oil on canvas, signed, 54cm x 44.5cm
£100-200



▲ 222.
George Schwacha (1908-1986)
Winter landscape, oil on board, signed, 44cm x 59cm
£40-60

223.
Tom Phillips (b.1937)
After Raphael, artist signed colour screen print numbered 28/150, 73cm x 60.5cm, with exhibition brochure

Lincoln Fine Art Sale



▲ 224.
Mario Maresca
(1877-c.1959)
Chickens in courtyard, oil on board, signed, 34.5cm x 45.5cm
£100-200



▲ 225.
Umberto Zini (1878-1964)
Venice, oil on canvas, signed, 39.5cm x 29.5cm
£150-250

226.
20thC School
Hong Kong street scene? oil on canvas, 74.5cm x 49.5cm



▲ 227.
20thC British School
Anglers on the quayside, oil on canvas, inscribed verso 7276, 71cm x 92cm
£500-800

228.
Michael Lawrence Cadman
(1920-2010)
Blue harbour, watercolour, signed and dated 2005, 34.5cm x 24.5cm

229.
Richard Whyley (20thC)
Towards the church, mixed media, signed, 59cm x 49cm



▲ 230.
Franz Alekseevic Rouband (1856-1928)
The Riding Kurd, oil on canvas, signed, 40.5cm x 29.5cm
£1000-2000

231.
N H Hullett (20thC)
En Provence, oil on board, signed, 44.5cm x 55cm



▲ 232.
Juriy Ohremovich (b.1956)
Sunrise, oil on canvas, signed, 50cm x 75cm
£300-400

233.
Vincent Selby (1919-2004)
Rural landscape, oil on board, signed, 11cm x 16cm



▲ 234.
Albert Du Mesnildot
(1922-1990)
Troupe, watercolour, signed, 31cm x 23cm
£100-200



▲ 235.
After James Guthrie
To Pastures New, oil, 42cm x 58cm
£200-300



▲ 236.
Doris Mabel Little
(1895-1977)
The Thames at Greenwich, watercolour, signed and titled verso, 51cm x 79cm
£50-100



▲ 237.
Ken White (b.1943)
Three men talking, oil on canvas, signed and dated (20)11, 79cm x 99cm
£250-350

239.
Derek Carpenter (20thC)
Sisters, oil on canvas, signed and dated (19)84, 70cm x 80cm

240.
Derek Carpenter (20thC)
Red poppy, oil on canvas, signed and dated (19)82, 74.5cm x 60.5cm

240A.
Derek Carpenter (20thC)
White flowers, oil on canvas, signed dated (19)84, 60cm x 50cm

241.
Derek Carpenter (20thC)
Young girl holding flowers, oil on canvas, signed and dated (19)84, 58cm x 46cm, and two portraits, farmstead (4)



▲ 238.
Felix de Boeck (1898-1995)
 Nocturne, oil on board, signed, titled and dated 1955 verso,
 55cm x 38.5cm
 £1000-2000

242.
Derek Carpenter (20thC)
 Female study, oil on canvas,
 signed and dated (19)84,
 69.5cm x 59.5cm

242A.
Derek Carpenter (20thC)
 Floral still life, oil on canvas,
 signed and dated (19)88,
 49cm x 59cm

242B.
Derek Carpenter (20thC)
 Cat, watercolour, signed and
 dated 90, 27cm x 19.5cm, and two
 others, dog and horse (3)



▲ 243.
Gualtiero Brereglieri (20thC)
 Village landscape, oil on
 board, signed, gallery brochure
 verso, 57.5cm x 37.5cm
 £40-60



▲ 244.
Christine Woodside (b.1946)
 Lomonds Spring, mixed media, signed and titled verso, 47cm x 47cm
 £800-1200



▲ 245.
Lawrie Williamson (b.1932)
 Hiatus, artist signed limited
 edition coloured print 2/50,
 52cm x 52.5cm
 £50-100



▲ 247.
20thC Continental School
 Garden view - verso, oil on
 board, bears signature Jean
 Brusselmans, 30cm x 40cm
 £200-300



▲ 246.
Max Lieberman (1847-1939)
 Huntsman and dogs, drawing,
 signed, 20cm x 15cm
 £100-200



▲ 248.
Rafael Durancamps (1891-1979)
 Rural landscape, oil on canvas,
 signed and indistinctly titled
 and dated verso,
 58.5cm x 78.5cm
 £250-350

Lincoln Fine Art Sale



- ▲ 249.
Enslin Hercules Duplessis (1849-1978)
Fir trees from Lynch Hill Lane, oil on canvas, signed and titled, 50cm x 60cm
£150-250

250.
Norman Stevens (1937-1988)
Dusk, mezzotint, artist signed, titled, dated (19)73 and numbered 36/150, gallery brochure verso, 40cm x 30cm

251.
George Richard Deakins (1911-1982)
Coastal scene, oil on board, signed, artist label verso, 21.5cm x 95cm

252.
Edith le Breton (1912-1992)
Head and shoulders portrait of a young boy, oil on board, signed and dated (19)72, 30cm x 24.5cm, and a coloured print (2)

253.
Edith le Breton (1912-1992)
I Be An Old Tramp ..., oil on canvas, signed, dated (19)64 and titled with poem verso, 34.5cm x 29cm

254.
After K Boyce
Coloured offset lithograph, no 153/500, and two others by the artist.
£160-220



- ▲ 255.
Mackenzie Thorpe (1908-1976)
Brent Geese in Flight, oil on canvas, signed and dated 1951, 49.5cm x 59.5cm, with Kenzie The Wild Goose Man - 1 volume
£200-300



- ▲ 256.
Gabriel Loppe (1825-1913)
Seashore, oil on board, initialled and dated (18)96, label verso Pelter/Sands Fine Paintings, 18cm x 25cm
£150-250



- ▲ 257.
Louis Van Lint (1909-1986)
Abstract, oil on board, signed, 16.5cm x 23cm
£200-300



- ▲ 258.
Giovanni Riva (1890-1973)
Venice, oil on canvas, signed, 30cm x 40cm
£150-250

259.
Peter Mayne (b.1952)
Industrial landscape, drawing, signed, 25cm x 30cm, and another, street scene (2)



- ▲ 260.
Edward Brian Seago (1910-1974)
Horse and caravan, ink drawing, signed, 21cm x 28.5cm
£500-800

261.
Frank E Jamieson (1834-1899)
River landscape, oil on canvas, signed, 50cm x 75cm



- ▲ 262.
Harold Sutton Palmer (1854-1933)
A Buckinghamshire landscape Nr Chequers Court, watercolour, artist label verso, Leicester Galleries label verso dated 1917, 52cm x 74cm
£200-400

263.
19thC British School
Fishing boats off the coast, oil on canvas, 44.5cm x 80.5cm

264.
Daniel Sherrin (1868-1940)
Masted ship at sea, oil on canvas, signed, 48.5cm x 74.5cm
£50-80

- 264A.
Luigi Barozzi (19th/20thC)
Italian coastal scenes, watercolour - a pair, signed, 27.5cm x 44cm

265.
Eduardo de Soto (b.1917)
Sitres, oil on canvas, signed and titled verso, 49cm x 59.5cm
£100-200



- ▲ 266.
Friedel Colm (20thC)
Winter river scene, oil on canvas, signed, 47cm x 57.5cm
£80-120

267.
Ann Sillaker (1862-1937)?
The Gulf of Africa, oil on canvas, signed, dated 1917 and titled verso, 43.5cm x 59cm

268.
J Charles Hiscock (20thC)
Grand Canal Venice, oil on canvas, signed and dated (19)79, 50cm x 75.5cm

269.
J Charles Hiscock (20thC)
Evening landscape (Italian School), oil on board, signed, dated (19)79 and titled, 48.5cm x 65cm

270.
J Charles Hiscock (20thC)
Ponte Molle Roma, oil on canvas, signed, dated (19)79 and titled, 37.5cm x 69.5cm

271.
J Charles Hiscock (20thC)
Westminster Abbey, oil on canvas, signed, dated (19)79 and titled, 29cm x 49cm

272.
Claude Rouvier (20thC)
Chickens in orchard, oil on canvas, signed, 41cm x 51cm

273.
19thC British School
Young lady in long evening dress, oil on board, 17cm x 11.5cm

274.
William Howard Hardy (19th/20thC)
Huntsman over the fence, oil on canvas, signed, 29.5cm x 39.5cm

275.
Christiane Heydon (19th/20thC)
Horse and wagon, oil on canvas, signed, 19cm x 36.5cm

276.
N Richardson (19th/20thC)
Country lane, watercolour, signed, 31cm x 23cm

277.
C Parkin (20thC)
Town landscape with chimneys, watercolour, signed and dated 1928, 19.5cm x 38cm

278.
William Henry Margetson (1861-1940)
Around the blazing fire, watercolour, signed and titled verso, 26.5cm x 21.5cm

279.
C Penley (19th/20thC)
River landscape, watercolour, signed, 17cm x 35cm

280.
W Collins (19th/20thC)
River landscape, oil on board, signed, 43.5cm x 110cm

281.
P M Walls (20thC)
Chay Blythe in British Steel
rounding the Horn, oil on board,
signed and titled verso,
50cm x 75cm

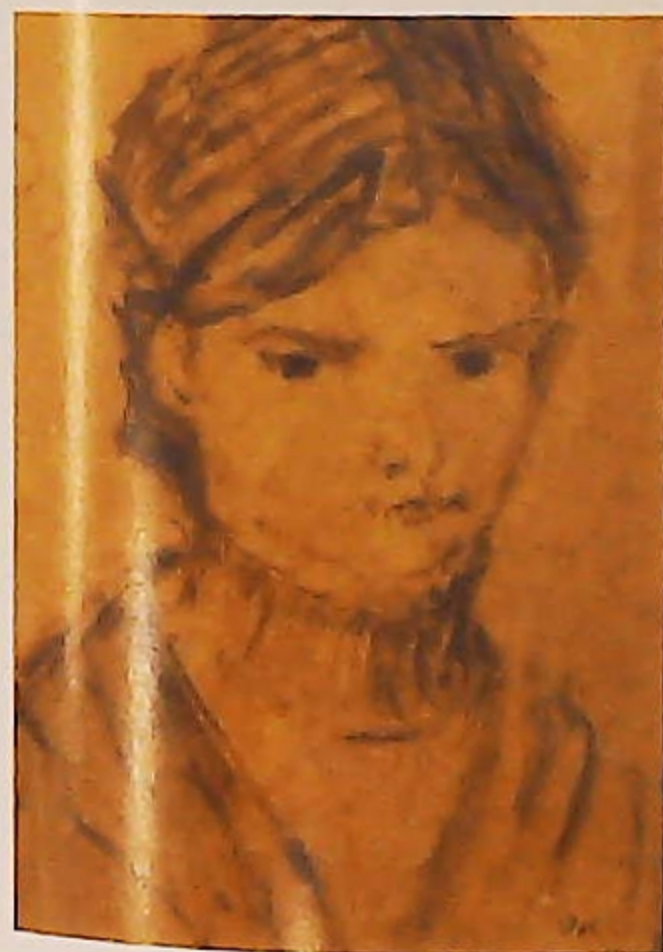
282.
Spare Lot

283.
J Kinnear (20thC)
Working horses in the field, oil on
canvas, signed, 43cm x 32cm

284.
20thC British School
River landscape, watercolour,
indistinctly signed and dated
(19)22, 23.5cm x 16cm



▲ 285.
John Jourdain (19th/20thC)
Country river scenes, oil on
canvas, a pair, signed,
39.5cm x 49.5cm
£80-120



▲ 287.
O K (20thC)
Head and shoulders portrait,
sketch, 34cm x 24cm
£100-200



▲ 286.
**Jose Maria Sert y Badia
(1874-1945)**
Procession, oil, 63cm x 23cm
£800-1200



▲ 288.
Daniel Tixier (20thC)
Floral study, oil on board,
signed, 16cm x 8.5cm
£50-100

289.
Albert Williams (b.1922)
Floral bouquet, oil on canvas,
signed, 45cm x 35cm

290.
Bertha Lambs (c.1859-c.1932)
Floral study - carnations in a
basket, oil on board - a pair,
signed, 21cm x 33cm

291.
George Harris (1847-c.1915)
River landscapes, figures by a
bridge, oil on board - a pair,
signed, 21cm x 33cm

292.
L E Brandon (19th/20thC)
Portrait of a society lady, oil on
canvas, signed and dated 1937,
50cm x 40cm

293.
Edward Hurst (20thC)
Portrait of a gentleman, sketch,
signed and dated 1933,
50cm x 37cm
£30-50

294.
19thC British School
Horse and cart in ruin landscape,
watercolour, 20cm x 27cm, and
another, farmhouse (2)

295.
British School
Castle garden scene, porcelain
plaque, 24cm x 19cm
£40-60



▲ 296.
**Helmut Fleischle
(1926-1996)**
Abstract, oil on canvas, signed,
56cm x 76cm
£150-250



▲ 297.
Ramanayche? (20thC)
Asian scene with cart and
horses, oil on board - a pair,
indistinctly signed,
24cm x 30cm
£100-200

298.
Fred Stubbings (20thC)
Country house, pastel, signed and
dated (19)48, 30cm x 46cm

299.
19thC British School
Scenic views and studies,
watercolour, sketches and pencil,
contents of folio (a quantity)

300.
Yai (20thC)
Fisherwomen, mixed media,
signed, 46cm x 61.5cm

301.
David Green (1936-2013)
Quimper Brittany, France,
watercolour, signed, titled and
dated 1985, artist label verso,
26cm x 37cm

302.
19thC British School
Dogs in landscape, watercolour,
40cm x 51cm, and other prints and
pictures, contents of folio (a
quantity)



▲ 303.
Wayne Reeves (20thC)
Low tide, Folkestone harbour,
pastel, signed, 44.5cm x 38.5cm
£50-100

Lincoln Fine Art Sale

304.
Youxian Zhou (20thC)
Morning in Tibet, artist signed screen print, titled and dated Dec 1991, 52cm x 54cm



▲ 305.
Frank Martin (1921-2005)
Hispano - Suiza, artist signed limited edition coloured etching 62/100, 38.3cm x 57.5cm
£250-350

306.
Youxian Zhou (20thC)
Moonlit Terrace, artist signed screen print, titled and dated 1993, 47cm x 56.5cm

307.
20thC School
Abstract, oil on canvas, 90cm x 60cm

308.
R Nixon (20thC)
Uxbridge Tram, oil on board, signed, 45cm x 60cm
£20-40

309.
After Phyllis Ginger
Town centre, coloured print, 49cm x 76cm
£80-120

310.
20thC School
An etching and a lithograph for Editionz Alecto 1973, indistinctly artist signed limited edition etching 20/2000, 94cm x 70cm

311.
Zinsky (20thC)
Cristiano Ronaldo for Manchester United, oil on canvas, signed, 70cm x 50cm
£250-400

312.
Snow Gibbs (1882-c.1970)
Cley Windmill, Norfolk, watercolour, signed and titled verso, 27.5cm x 38cm
£20-30

313.
Harold W Hallis (19th/20thC)
York Minster interior, watercolour, signed, titled and dated 1945, 53cm x 37cm
£60-90

314.
20thC British School
Reggie Kray - portrait with a young man, oil on board, 50cm x 75cm

315.
Anthony James (20thC)
Landscape with church, pastel and chalks, signed, artist label verso, 51cm x 84cm



▲ 316.
After Thomas Couture
18thC scenes with young boys, oil on copper - a pair, 20cm x 17cm
£100-150

317.
After William Lionel Wyllie
Six gilt framed and mounted prints (6)

318.
20thC School
Floral still life, oil on canvas, indistinctly initialled, 48.5cm x 38.5cm

319.
H A Vasse (19th/20thC)
Kislingbury bridge, Northampton, oil on canvas, signed and dated 1934, and titled verso, 70.5cm x 90.5cm
£100-150



▲ 320.
A De Tuyll (19th/20thC)
Lake scenes, watercolour - a pair, signed, 22.5cm x 34.5cm
£100-150



▲ 321.
Rowland Langmaid (1897-1956)
Frigates at sea, artist signed etching, 20cm x 37cm
£80-120



▲ 322.
J D Morris (19thC)
Rural landscape with figures and animals, oil on canvas, signed, 39.5cm x 59.5cm
£150-250

323.
Alan Ingham (1920-1994)
Away From It All, artist signed limited edition coloured print 405/600, 27.5cm x 64cm

324.
Alan Ingham (1920-1994)
October Mist, artist signed limited edition coloured print 212/395, 27cm x 61cm

325.
Alan Ingham (1920-1994)
Shepherd's Delight, artist signed limited edition coloured print 181/600, 29.5cm x 70cm

326.
Alan Ingham (1920-1994)
At Peace, artist signed limited edition coloured print 209/500, 28cm x 69.5cm

327.
Alan Ingham (1920-1994)
In The Sparkling Air, artist signed limited edition coloured print 291/600, 29.5cm x 70cm

328.
Alan Ingham (1920-1994)
Heat of the Country, artist signed limited edition coloured print 99/600, 25cm x 50cm

329.
Alan Ingham (1920-1994)
Ebb Tide, artist signed limited edition coloured print 202/495, 25.5cm x 59cm

330.
Alan Ingham (1920-1994)
A Time for Reflection, artist signed limited edition coloured print 562/600, 31.5cm x 61cm

331.
Lewis Davies (1939-2010)
Reclining nude study, drawing, signed, 54cm x 43cm, and another signed and dated (19)80 (2)

332.
Lewis Davies (1939-2010)
Seated nudes study, charcoal, signed, 53cm x 37cm, and another signed Lorraine Peacock (2)

333.
19thC British School
Landscape view, oil on board, 17cm x 25cm

334.
19thC British School
Half length portrait of a lady, oil, 15.5cm x 12.5cm

335.
John Baston (b.1929)
Trafalgar Square, watercolour, signed, 32.5cm x 24.5cm

336.
T Aldridge (20thC)
Self Portrait I, watercolour, inscribed and titled verso, 24.5cm x 19.5cm, and another (2)

337.
Fergus Griffin (20thC)
Mousehole Harbour, Cornwall, oil, inscribed and titled verso, 26cm x 35.5cm, and another initialled CMA (2)

338.
Bryan Organ (b.1935)
Study No 1 hanging lamp, mixed media, signed, titled and dated 1965, 20cm x 12.5cm

339.
John Hall (1921-2006)
Female study, drawing with highlight, studio stamp, 48cm x 36cm

340.
Cecil Crow (1895-1947)
Garden scene with bandstand, oil on canvas, 88cm x 69cm

341.
Jean Crow (1930-2016)
Studio works, including oil on canvas - fishing boats, figure studies, watercolours - coastal scene, large quantity of pencil sketches, easel and accessories (contents of tin trunk)

Artist index

NAME: LOT NUMBER

A		H		P	
Adams, E C	125	Haddelsey, Vincent	115-119	Palmer, Harold Sutton	262
Adams, James Frank	141-146	Haire, David	32	Parkin, C	277
Aldridge, Thomas	218, 336	Hall, John	339	Parson, Les	203
Apap, William	3	Hallis, Harold W	313	Penley, C	279
B		Hamilton, John	202	Phillips, Tom	223
Barlow, Jeremy	207	Hardy, William Howard	274	Proctor, P	73
Barozzi, Luigi	264A	Harper, Henry Andrew	37	R	
Baston, John	335	Harris, George	291	Rambert, René	217
Bates, Percival A	216	Harrison, Charles Harmony	99	Rands, Angus Bernard	196-201
Bayer, Julius	16	Haskins, John	211	Reeves, Wayne	303
Beauvais, Walter John	2	Henry, Bernard Benedict	54	Reynolds, R J	43
Beronneau, Andre	205	Heydon, Christiane	275	Richardson, N	276
Bonington, Richard Parkes	96	Hicks, M J	79	Riva, Giovanni	258
Bowkett, Jane Maria	18	Hillingford, Robert Alexander	9	Roope, Len	110-114
Bowman, Paul	120	Hiscock, J Charles	268-271	Roper, Keith	106-109
Boyce, Kay	254	Hoyley, Stephen E	36	Rouband, Franz Alekseevic	230
Bradley, Helen Layfield	210	Hughes, John Joseph	48	Rouvier, Claude	272
Brandon, I	292	Hullett, N H	231	S	
Brereglieri, Gualtiero	243	Hurst, Edward	293	Schwacha, George	222
Browne, Clive	138	I		Seago, Edward Brian	260
Buckingham, Ash	122, 123	Ingham, Alan	323-330	Selby, Vincent	233
C		J		Sert y Badia, Jose Maria	286
Cadman, Michael Lawrence	228	James, Anthony	315	Shaw, Charles L	26
Cairns, Ryan	219	Jamieson, Frances E	206	Sherrin, Daniel	50, 264
Cameron, Charles E	147	Jamieson, Frank E	261	Sillaker, Ann	267
Carpenter, Derek	239-242	Jourdain, John	285	Smart, Michael	204, 212
Carr, Colin	1, 100-104	K		Smedley, Joseph	135, 136
Colm, Friedel	266	Kinnear, J	283	Stevens, Norman	250
Collins, W	280	L		St John, Edwin	41, 46
Cotman, Frederick George	67, 68	Lambs, Bertha	290	Storey, Thomas George	133, 134
Crow, Cecil	340	Lampi, Giovanni Battista	66	Stubbings, Fred	298
Crow, Jean	341	Langmaid, Rowland	321	T	
D		Leathers, David John	214	Thorpe, Mackenzie	255
Daubigny	92	Le Breton, Edith	252, 253	Tixier, Daniel	288
Davies, Lewis	331, 332	Lecoque, Alois	215	V	
Deakins, George Richard	251	Leggett, Alexander	65	Van Haan	19
De Boeck, Felix	238	Lemaire, Madeleine Jeanne	61	Van Lint, Louis	257
Del Pilar, Servando	221	Lewis, Charles James	24	Vasse, H A	319
De Soto, Eduardo	265	Lieberman, Max	246	Vely, Anatole	60
De Tuyll, A	320	Lightfoot, Peter	121	Vertin, Petrus Gerardus	52
De Wint, Peter	132	Little, Doris Mabel	236	Vickers, Alfred H	55
Dodson, Tom	208, 209	Loppe, Gabriel	256	W	
Dolby, Edwin Thomas	47	Lowry, Laurence Stephen	5, 186-191	Walker, John Rawson	12
Du Mesnildot, Albert	234	M		Waller, David	8
Duplessis, Enslin Hercules	249	Macbeth, Norman	33	Walls, P M	281
Durancamps, Rafael	248	Mallor, Marisa	213	Wheeldon, Robin	137
E		Maresca, Mario	224	White, Ken	220, 237
Eaman, Joseph	338	Maresca, Salvatore	29, 51, 51A	Whyley, Richard	229
Earp, W H	75	Margetson, William Henry	278	Williams, Albert	289
F		Marshall, Thomas Falcon	11	Williams, Walter Heath	22, 23
Fichel, Eugene Benjamin	30, 31	Martin, Frank	305	Williamson, Lawrie	245
Fleischle, Helmut	296	Mason, James	124	Wood, A M	76
Fuchs, Karl	28	Masters, E	74	Wood, Wilfrid René	127
G		Mayne, Peter	259	Woodside, Christine	244
Gianni, M	93, 94	Mellon, Campbell Archibald	7, 83-89	Y	
Gibbs, Snow	312	Morden, Robert	128	Yai	300
Goodman, John Reginald	44	Morris, J D	322	Z	
Green, David	301	Moss, Peter	155	Zhou, Youxian	304, 306
Griffin, Fergus	337	N		Zini, Umberto	225
Grispini, Filippo	59	Nixon, R	308	Zinsky	311
O		O		Zohar, Israel	10
		Ohremovich, Juriy	232		
		Oliver, William	17		
		Organ, Bryan	338		

As at the time of printing, lots without estimates are to be sold without reserve, auctioneer's discretion.
See online catalogue for updates.

INFORMATION FOR BUYERS

1. **Introduction:** The following informative notes are intended to assist Buyers, particularly those inexperienced or new to our salerooms. All sales are conducted on our printed 'Conditions of sale' which are readily available for inspection and normally accompany catalogues. Our staff will be happy to help you if there is anything you do not fully understand.
2. **Agency:** As auctioneers we usually contract as agents for the seller whose identity, for reasons of confidentiality, is not normally disclosed. Accordingly, if you buy your primary contract is with the seller.
3. **Estimates:** Estimates are designed to help buyers gauge what sort of sum might be involved for the purchase of a particular lot. The lower estimate may represent the reserve price and certainly will not be below it. Estimates do not include the buyer's premium or VAT (where chargeable). Estimates are prepared some time before the sale and may be altered by announcement before the sale. They are in no sense definitive and are subject to constant revision.
4. **Buyers premium:** The 'Conditions of sale' oblige buyers to pay a buyer's premium at 17.5% on the hammer price of each lot purchased with a minimum of £1 per lot. In the case of lots purchased 'Live On-line' or via www.the-saleroom.com or www.i-bidder.com this will be charged at 22.5% on the hammer price. In addition, VAT is payable on this premium (see below).
5. **VAT:** An asterisk (*) indicates that VAT is payable by the purchaser at the standard rate imposed by current UK law on the hammer price as well as being an element in the buyer's premium, lots are noted in the saleroom by a red dot on the lot number. This imposition of VAT is likely to be because the seller is registered for VAT within the European Union and is not operating the Dealers Margin Scheme or because VAT is due on importation into the UK. The double symbol (**) indicates that the lot has been imported from outside the European Union and the present position is that these lots are liable to a reduced rate of VAT on the gross lot price (i.e. both the hammer price and the buyer's premium). Lots which appear without either of the above symbols indicate that no VAT is payable on the hammer price. This is because such lots are sold using the Auctioneers' Margin Scheme and it should be noted that the VAT included within the premium is not recoverable as input tax. (VAT rates are changing with frequency, please check with HMRC. VAT will be charged as set by Government at the time of sale.)
6. **Condition and description of lots.** We are primarily, agents for the seller. We are dependent on information provided by the seller and whilst we may inspect lots and act reasonably in taking a general view about them we are normally unable to carry out a detailed or any examination of lots in order to ascertain their condition in the way in which it would be wise for a buyer to do. Intending buyers have ample opportunity for inspection of goods and, therefore, accept responsibility for inspecting and investigating lots in which they may be interested. Please note carefully the exclusion of liability for the condition of lots contained in the 'Conditions of sale'. Neither the seller nor we, as the auctioneers, accept any responsibility for their condition. In particular, mechanical objects of any age are not guaranteed to be in working order. However, in so far as we have examined the goods and make a representation about their condition, we shall be liable for any defect which that examination ought to have revealed to the auctioneer but which would not have been revealed to the buyer had the buyer examined the goods. Additionally, in specified circumstances lots misdescribed because they are 'deliberate forgeries' may be returned and repayment made. There is a 21 day time limit from the date of sale, not date of collection or receipt. (The expression 'deliberate forgery' is defined in our 'Conditions of sale').
7. **Electrical goods:** Items are tested by a qualified electrician for SAFETY ONLY. An item that passes the PAT safety test may not work. Conversely, an item that fails the test may work with just minor repair. 'Working Order' and 'Safe' are two completely different concepts. The only thing you may take for granted is that the item will be safe at the point of sale. Items that have failed will have their cabling cut to source, labelled and sold 'For Trade Only'. To use the object you will have to change it radically from what was sold to you. Therefore, the Auctioneers cannot be held responsible after the point of sale. Those items sold genuinely as 'antiques or collectables' will not have been tested and if bought for use must be checked over for compliance with safety regulations by a qualified electrician before use. This is an express condition.
8. **Export of goods:** Buyers intending to export goods should ascertain (a) whether an export licence is required and (b) whether there is any specific prohibition on importing goods of that character because, e.g. they may contain prohibited materials such as ivory. Ask us if you need help
9. **Bidding in person:** Some form of identification with proof of address will be required if you are unknown to us. Bidders may be required to register before the sale commences and lots will be invoiced to the name and address on the registration form. Account transfers will not be recognised or facilitated under any circumstances.
10. **Absentee bidding:** Commission bids may be left with the auctioneers indicating the maximum amount to be bid excluding buyers' premium. They will be executed as cheaply as possible having regard to the reserve (if any) and competing bids. If two buyers submit identical commission bids, the auctioneers may prefer the first bid received. If there are genuine reasons why you are unable to leave a Commission Bid and you wish to bid by telephone we may accommodate on lots where your opening bid will be £500 or above. There are inherent dangers with this practice; therefore all arrangements shall be entirely at the bidder's risk. Absentee bid instructions must be received by telephone, fax or email 12 hours prior to the sale.
11. **Live Internet Banking:** In completing the bidder registration on www.the-saleroom.com and providing your credit card details and unless alternative arrangements are agreed with Golding Young Limited, you
 - (i) authorise Golding Young Limited, if they so wish, to charge the credit card given in part or full payment, including all fees, for items successfully purchased in the sale via www.the-saleroom.com or www.i-bidder.com, and
 - (ii) confirm that you are authorised to provide these credit card details to Golding Young Limited through www.the-saleroom.com or www.i-bidder.com.
12. **Methods of payment:** Accounts are due for settlement SALEDAY. The following methods of payment are acceptable. There will be NO EXCEPTIONS to this policy. To avoid undue embarrassment for yourself or our staff, please do not ask for preferential treatment.
 - i. **Cash.** Single payments up to £10,000 only.
 - ii. **Debit Card.** No limit with chip & pin. (CNP limit £500).
 - iii. **Credit Card.** (Fee of 2%+vat) No limit with chip & pin. (CNP limit £500).
 - iv. **Bank Drafts & Building Society Cheques.** No limit. Due to forgeries, we will retain the goods for 3 working days to establish clearance of funds.
 - v. **Cheques.** Accepted up to the limit of the guarantee card for immediate clearance. For sums exceeding this, and you are not known to the auctioneers, we will retain the goods for 7 working days to establish clearance of funds.
 - vi. **Bank Transfer.** Please see details on our website.
13. **Collection and storage:** Goods can be collected as soon as they are paid for and within two working days following the sale. If goods remain with us and we have no contrary written advice of your intentions the items will be moved to storage and reasonable labour charges levied and storage at the rate of £2+vat per lot per day thereafter for small items and £10+vat per lot per day for furniture and large items.
14. **Postage and packing:** Options for buyers are available at www.goldingyoung.com/buying-shipping or ask a member of staff.

Lots subject to normal VAT rules are marked in the text-only catalogue with a single asterisk character (*) or a single dagger symbol (†) to indicate a VAT added rate of 20%.

Lots subject to normal VAT rules are marked in the text-only catalogue with a single 'at' character (@) to indicate a VAT inclusive rate of 20%.

Lots subject to normal VAT rules are marked in the text-only catalogue with double asterisk characters (**) or a double dagger symbol (‡) to indicate a VAT added rate of 5%.

Lots subject to normal VAT rules are marked in the text-only catalogue with double 'at' characters (@@) to indicate a VAT inclusive rate of 5%.

Lots marked in the text-only catalogue with a bullet character (•) are subject to the Artist's Resale Right Scheme.

ESTD 1864

GOLDING YOUNG



Thinking of selling?

Executors, solicitors, accountants, insurers, corporations and government departments, have to exhibit due diligence when instructing. Use this checklist to do the same, with a few reasons why you may wish to choose us.

We are regulated by RICS
Better Regulation for Us.
Better Protection for You.
Accept Nothing Less.

Our online catalogues
For over 20 years our catalogues have been online and our experience ensures they are placed in front of the right buyers in the global market.

Our sales results
November 2017 saw our 109th consecutive month with a sale at either Bourne, Grantham or Lincoln producing a sold rate of over 90%. Good advice, great results for hundreds of vendors every month.

Join their success with an entry in our next sale!

goldingyoung.com

HOUSE CLEARANCE

If there is that hidden 'find', it will be to your direct benefit.

Every week we take instructions for House Clearance for all of the prominent firms of Solicitors in the area, as well as from Private Individuals, Trustees and Executors.

If you are dealing with the content of a property, please contact us at the earliest point.

A visit to the premises by one of our qualified and experienced appraisal staff will offer the best advice for Security, Valuation and Sale.

DISPOSE OF NOTHING

Often things thought to be rubbish are saleable.

IMMEDIATE ACTION IS REQUIRED

Once a property is uninhabited it is a target for burglars and your insurance may be invalid.

Items removed from premises are listed and handled by our professional carriers. Goods are then allocated to the next appropriate sale to ensure the highest sale return.

We also deal with the unsaleable residue, disposed of in the most cost-effective and environmentally friendly way, giving a total service.



PROPERTIES CLEARED, PROMPTLY AND EFFICIENTLY

Call: John Ireland MA MRICS - 01778 422686
For Bourne, Stamford, Peterborough Region and Southern Counties

Call: Craig Bewick BA (Hons) FNAVA - 01476 565118
For Grantham Region and The Midlands

Call: John Leatt ASEAV - 01522 524984
For Lincoln Region and Northern Counties

The Bourne Auction Rooms
Spalding Road, Bourne,
Lincolnshire PE10 9LE

E: bourne@goldingyoung.com
T: +44 (0) 1778 422686
F: +44 (0) 1778 425726

The Grantham Auction Rooms
Old Wharf Road, Grantham,
Lincolnshire NG31 7AA

E: grantham@goldingyoung.com
T: +44 (0) 1476 565118
F: +44 (0) 1476 561475

The Lincoln Auction Rooms
Thos Mawer House, Station Road
North Hykeham, Lincoln LN6 3QY

E: lincoln@goldingyoung.com
T: +44 (0) 1522 524984
F: +44 (0) 1522 681804

The Louth & Wolds Office
5 Mercer Row, Louth
Lincolnshire LN11 9JG

E: louth@goldingyoung.com
T: +44 (0) 1507 661864

The Stamford & Rutland Office
1, The George Mews
Station Road, Stamford
Lincolnshire PE9 2LB

E: stamford@goldingyoung.com
T: +44 (0) 1780 751666

goldingyoung.com

