

Established 1900

-GOLDINGS-

— AUCTIONEERS & VALUERS —

CATALOGUE SALE

AUTUMN 2002



WWW.GOLDINGYOUNG.COM





IMPORTANT NOTES FOR PURCHASERS

1. **PAYMENT:** Must be made in full immediately after the Auction. The following methods of payment are acceptable.
 a) Cash b) Bankers Draft c) Building Society Cheque d) Cheques (accompanied by a valid card.)
 e) Debit & Credit Cards (the latter subject to a charge of 2% + VAT).

PAYING BY CHEQUE?

If you are not known to the Auctioneers and wish to pay by cheque above your guarantee card limit WE WILL RETAIN THE GOODS until it has been cleared (7 days). There will be NO EXCEPTIONS to our policy. To avoid UNDUE EMBARRASSMENT for yourself or to our staff, please do not ask for preferential treatment. If you wish to clear goods immediately bring a letter from your Bank or a suitable guarantor reference.

2. **BUYERS PREMIUM** of 15% on the first £100 of each lot and 12 1/2% thereafter is payable on all lots. Minimum £1 per lot. All plus VAT.
3. **REMOVAL OF PURCHASES:** Goods must be collected as soon as they are paid for, and in the 2 Working Days following the sale. If goods are not collected on these days we reserve the right to charge £1 per lot per day thereafter.
4. **COMMISSION BIDS:** If you are unable to attend this or any of our future sales we will be pleased to bid on your behalf. We always purchase at the lowest possible price, subject to other bids and reserves.

 All bids must be handed to the office on an official form. It remains the responsibility of prospective purchasers to contact GOLDINGS to confirm whether their bids have been successful.
5. **TELEPHONE BIDS:** There are inherent dangers with this practice, therefore all such arrangements are made entirely at the bidder's risk. Telephone bids will only be accepted if the lower estimate is £500 or above. For lots with a lower estimate below this figure Commission Bids Only will be accepted.
6. **SMOKING** is not permitted in any part of the Saleroom.
7. **REFRESHMENTS** will be available Saleday.
8. **ACCOUNT TRANSFER** will not be recognised after the sale. If any lots are purchased for another person, this must be declared at the fall of the hammer.
9. **ESTIMATES.** Our Auctioneers will be available during viewing to give guidance on your prospective purchases.

GLOSSARY

- a) Generally: 'As Found' (AF). This term indicates the lot has some damage. Its absence does not indicate that the lot is free of defect. All lots are SOLD AS SEEN.
- b) Paintings: 'Signed, initialled, monogrammed' - This refers to the present state of the work and is not an attribution.
- c) Books and printed matter: These items are not sold subject to collation and are not returnable once removed from the premises.
- d) Silver & Jewellery: Weights given are approximations given by basic instruments.

Established 1900
-GOLDINGS-
AUCTIONEERS & VALUERS

Upon instructions from the Executors of Mrs Mary Fry (Dec'd)
in respect of the residual contents of the cellars and attics of
Fulbeck Hall and other properties.



TUESDAY 17TH SEPTEMBER

Commencing 10am

Furniture

Commencing 2.30pm

Silver & Jewellery

WEDNESDAY 18TH SEPTEMBER

Commencing 10am

Pictures, Books, Clocks

Antique glass ceramics, metalware and collectables

Commencing 2.30pm

20thC glass ceramics, metalware and collectables, oriental carpets & rugs

Lot enquiries

Suki J Burnett A.N.A.V.A.

Jan L Squires PJ Gem (Dip), A.N.A.V.A.

Colin R Young F.N.A.V.A.

Accounts enquiries

Marie Scoffield

VIEWING: Monday 16th - 2pm to 7pm, Tuesday 9am to 12noon and Wednesday 9am to 10am.
And On-line at www.goldingyoung.com
from Saturday 14th September.

Golding Young & Co.

Old Wharf Road, Grantham, Lincolnshire NG31 7AA

Telephone: 01476 565118 Fax: 01476 561475 Email: enquiries@goldingyoung.com

Buyers Hotline: 01476 575202

For lot enquiries and commission bids viewday and saledays only.

BELVOIR CASTLE ANTIQUES ROADSHOWS

The Duke & Duchess of Rutland cordially invite you to bring along **YOUR** heirlooms and objects of interest for identification and **FREE** sale valuation at Belvoir Castle.

Our Valuation Department will be available to appraise your

Antiques, Works of Art, Silver, Jewellery & Collectables

Sundays 15th, 22nd & 29th September

From 11am to 4pm

NB. Castle entry fees apply, but valuations are free.

STAMFORD ANTIQUES ROADSHOW

AT THE LADY ANNE'S HOTEL, ST. MARTINS

Our Valuation Department is available between

10am and 4pm to look at your

Antiques, Works of Art, Jewellery, Collectables, etc.

Thursday 26th September

HOUSE DISPERSAL SALE OF ANTIQUE AND MODERN FURNITURE AND EFFECTS

Friday 27th September at 10.30am

At The Lady Anne's Hotel, Stamford

To be viewed upon the premises 100yds from the Hotel

Wednesday 25th September 2pm to 7pm,

Thursday 26th September 10am to 7pm

and Saleday 8.30am to 10am.

And On-line at www.goldingyoung.com

from Monday 23rd September.

Catalogues: £3 pre-paid by post (orders by card welcome). Please note entry to the house is by catalogue only, admits 2. Due to size of some of the rooms some restrictions will be in place with regard to numbers in the property at any time.

GENERAL ESTATE CLEARANCE SALES Wednesdays 9th & 23rd October at 10am

NB: Sale of 25th September has been postponed.

VIEWING: Tuesday prior 2pm to 6pm

and Saleday 9am to start of sale.

HOUSE CLEARANCES and SINGLE ITEMS always INVITED

HOURS of BUSINESS

Monday to Friday 9am to 1pm & 2pm to 5pm

Entries welcome at all times except Saleday

COMMERCIAL SALE

Wednesday 9th October at 10am

Including Machine Mart Tools and the contents of a nursing home.

VIEWING: Tuesday prior 2pm to 6pm
and Saleday 9am to start of sale.

ANTIQUES & FINE ART

Tuesday 12th November at 12noon

Entries now invited of European and Oriental Pottery, Porcelain and Glass, Oil paintings, Watercolours and Prints, Books, Silver and Platedwares, Clocks, Watches and Jewellery, Metalware & Bygones, Arms and Militaria, Furniture, etc.

COLLECTORS, SALE

Wednesday 13th November at 10am

To include all 20thC. collectable ceramics, glass, metalware, bygones, cigarette cards, toys, dolls, trains and

A collection of Dinky, Matchbox and Corgi
DIE-CAST MODELS



Upon instructions from the Executors of Clifford Tresadern (Dec'd)

COMBINED CATALOGUE & VIEWING FOR THESE TWO SALES:

Monday 11th 2pm to 7pm, Tuesday 9am to 12noon and
Wednesday 9am to 10am.

And On-line at www.goldingyoung.com
from Saturday 9th October

ILLUSTRATED CATALOGUES:
£5 pre-paid by post (orders by Card welcome)

ANTIQUES DISCOVERY DAYS

Free Auction Valuations

Entries now invited for our forthcoming Specialist Sales

Every Tuesday 2pm to 6pm in the Saleroom.

For less portable items or large collections either bring a photograph or invite us to visit your home without charge or obligation.

Contact Jan Squires 01476 565118 for an appointment

CLICK-TO-VIEW PAST SALE RESULTS
www.goldingyoung.com

The BBC are coming to "FLOG IT!"

Filming for this exciting new Antiques Programme will take place at our sale on the 5th February 2003.

Entries now invited.

PROPERTIES CLEARED - TRANSPORT ARRANGED
VALUATIONS FOR ALL PURPOSES

Day One

Commencing 12 noon

Furniture

1. A full size late Victorian/Edwardian billiard table together with accessories. VIEWING by appointment only as the table is to be viewed in situ 5 miles from Grantham. The purchaser will be responsible for dismantling and removal of this lot.
2. An Edwardian corner display cabinet of serpentine form with Greek key moulding over fluted decoration and trailing patera to either side of a single glazed door, with shaped shelves, raised on moulded splay feet, 69" high, 29" wide.
3. A set of 4 mid Victorian rosewood dining chairs with C-scroll moulded balloon backs, sculptured dralon overstuffed seats and cabriole legs.
4. A set of 4 late Victorian dining chairs with rococo pierced vase backs, overstuffed seats (matching lot 3) and cabriole legs.
5. A pair of late Victorian lady's and gents armchairs with brown dralon upholstery and turned legs.
6. A 1920's mahogany bergere low armchair with reeded uprights and feet.
7. A Georgian mahogany butler's tray on folding stand.
8. A pair of Victorian mahogany balloon-back dining chairs with overstuffed serpentine seats and turned legs.
9. An early 20thC carved oak monk's bench with folding top, box seat and scoop carved and floral panelled base, 42" wide.
10. A 19thC walnut occasional table, of circular shape with inset pink/grey/white marble top, egg and dart moulded rim with paterae projections, pierced frieze carved with foliate scrolls, on 4 foliate, wrythen, fluted legs with acanthus terminals, joined by a quatrelobe beaded stretcher centred by patera, on tapering foliate carved feet, 22" dia.



11. An early 19thC mahogany 3-tier dumb waiter, of octagonal shape, with raised pierced borders, flared reeded supports, on tripartite downswept legs with acanthus carved knees and caps, 41" high.
12. A Victorian walnut games table, the circular moulded edge top inlaid with an ebony and boxwood chequerboard, on a ring turned and baluster pedestal, with tripartite downswept legs, 19 1/2" dia.
13. An oak 'bucket' jardiniere, brass bound, on 3 swept legs tied by a triangular platform, makers label to inside 'R A Lister & Co Ltd, Dursley, England', 27 1/4" high, 12 1/4" dia.
14. A George III style elm provincial ladderback chair, with pierced top rail and conforming tie rails, on square legs and H-stretcher, (no seat).
15. A 19thC oak brass bound bucket with brass handle and original tin liner, 10" high.
16. A Dutch brass jardiniere and stand, the baluster bowl with everted rim and embossed with fruit, flowers, crest and scrolls joined by ribbon drapery, the pedestal with trefoil ornament, and on domed circular base, 32 3/4" high, 12 3/4" dia.
17. A 'Duncan Fyffe' style mahogany occasional table, the circular top with pie-crust edge, on a vase turned pedestal, triple fluted base with brass claw caps, 24" dia, 20thC. Bears label Ferguson Bros Mfg Co, Uttabrake, NJ.
18. A giltwood jardiniere stand, the circular top with egg and dart moulded border, ribbon fold frieze, on 4 fluted tapering legs with paterae capitols and terminals, tied by an incurving platform with bergere panel, on baluster feet, the well fitted with a brass planter with swing handles, 18" dia, 28" high.
19. A Victorian walnut footstool, the oblong rising top upholstered with needlework panel, on bun feet, 11" x 14".
20. An early 18thC carved oak coffer, the plain top with ovolu moulded edge over a carved frieze, triple inset panel front carved with foliate and paterae diamond lozenges, carved muntins and on stile feet, 44" wide, original lock plate and escutcheon, later hinges.
21. An oak 2-tier occasional table, the rectangular top with lunette and paterae carved border, over a paterae frieze, on 4 turned supports, with conforming under tier, and on turned legs, 22" wide, 19" high.
22. A George III pine chest of 2 short and 2 long graduated drawers, having later brass swing handles with cutaway backplates, on ogee bracket feet, 32" wide.
23. An early 18thC pine side table, the moulded edge top with canted front corners, over a long frieze drawer with brass bail handles on shaped backplate, on columnar legs joined by moulded stretchers, 33" wide.
24. A basketwork garden chair.
25. An Edwardian rosewood chaise longue with gold floral brocade upholstery and neo-classical floral marquetry, on square taper legs.



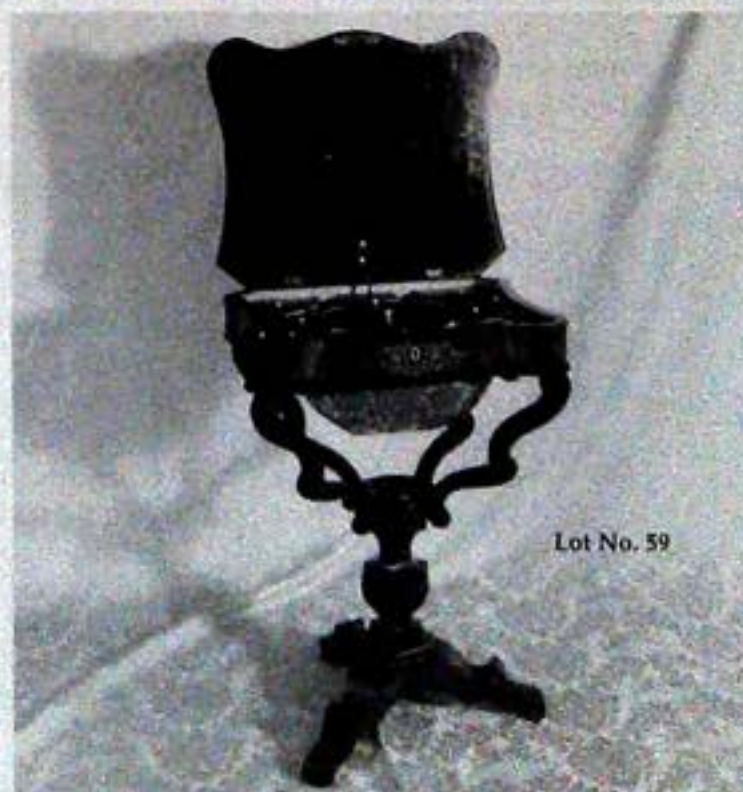
Lot No. 38



Lot No. 53

26. A Victorian mahogany chaise longue with turned legs, left hand bulk and upholstered in mushroom button dralon.
27. An Edwardian beech open armchair with bergere back and seat.
28. A pair of late Victorian walnut tub chairs with gallery hoop backs and square taper legs with spayed feet, upholstered in floral sculptured dralon.
29. A Victorian kitchen table with pine scrub tilt top on a beech tripod base.
30. An Edwardian mahogany plant stand, with circular top (previously with fan inlay), on square flared legs joined by a circular undershelf with fan inlay. 39 1/2" wide.
31. A 19thC mahogany Pembroke table with rectangular twin flaps, single end drawer with brass swing handle, on square section legs joined by cross stretcher (later addition), 32" x 39".
32. A late Victorian mahogany wine table.
33. A Globe Wernicke type mahogany bookcase with acanthus capitols and dentil frieze, reeded side pillars, single glazed uplifting door over full width drawer, 35" wide.
34. A Jacobean style oak buffet, with moulded top, 2 lozenge carved doors enclosing 2 drawers, raised on bulbous acanthus legs, joined by pot board.
35. An unusual George III mahogany carver chair with openwork back, overstuffed seat and reeded taper legs.
36. A set of 4 19thC mahogany provincial dining chairs with reeded barbacks and tie rail, conforming uprights, loose seats on ring turned and turned legs joined by H-stretchers.
37. An Edwardian walnut child's schooner chair with turned uprights and horizontal spindle back, bergere seat.
38. A set of 6 William IV mahogany dining chairs with over-run cresting rail, shaped bar back, overstuffed seats and carved and turned forelegs.
39. A 19thC French boule and gilt metal foldover card table, the top with moulded undulating outline, banded with ebony, the surface laid with crimson baize, and with conforming boule and ebony banding, over a shaped frieze centred by gilt metal mask, on cabriole legs with cherub, rocaille and foliate capitols and gilt metal sabots, 34" wide. (AF)
40. A Victorian mahogany part half-tester bed comprising foliate scrolling footboard with oval panel and moulded hood.
41. An early 19thC mahogany canopy bed with arched footboard and 2 pillars having wrythen leaf carving over pineapple knops.
42. A late Victorian walnut mirrorback dresser.
43. An early 19th C continental flamed mahogany Secretaire a Abbattant with fall front resting over 3 stepped drawers.
44. A late Victorian mahogany gun cabinet with moulded cornice and single glazed door revealing a fitted interior for 6 guns over a 2-door base with fielded panels, on plinth, 90" high, 34" wide.
45. A Victorian mahogany wardrobe and duchess dressing table, the robe having single mirrored door and drawer base, the table with oval swing glass, an arrangement of drawers and turned legs.
46. A Victorian 2 door walnut wardrobe with inset arched panels and on raised plinth base, together with another matching single door wardrobe.
47. A large late Victorian mahogany mirror back sideboard, the upper section with cavetto moulding, carved corbels and a bevelled mirror plate flanked by twin turned pilasters, supported on carved brackets, the lower section having 2 frieze drawers over 2 end cupboards each with inset carved panels flanking open shelf with conforming uprights. 72 1/2" wide.

48. A Victorian flamed mahogany cabinet bookcase, the upper part having moulded cornice, 2 arched glazed doors over a base with single cushion drawer over 2 flamed panel doors, on plinth, 87" high, 45" wide.
49. A Victorian mahogany double wardrobe, having 2 arched panel doors, cupid's bow plinth with bracket feet, 75" high, 45" wide.
50. An Edwardian oak dresser with asymmetrical platerack top, the base having 2 drawers over 2 panel doors, on plinth, 80" high, 54" wide.
51. A George III stripped corner cupboard with moulded breakfront cornice, 2 arched and panelled doors revealing shaped shelves over 2 similar panelled doors. 79" high, 45" wide.
52. A late 19thC French kingwood veneered washstand with shaped grey and liver marbled traytop over 2 drawers with knob handles, shaped apron, raised on carved cabriole legs, 39" wide.
53. A mid Victorian walnut tripod table with shaped top laid in burr veneers and having central boss and border inlaid with satinwood and harewood trailing decoration, turned and carved pillar to a central boss with inlaid panels dividing 3 acanthus carved and scrolling outplay legs. 29" dia, 29" high.
54. A 19thC French Boulle centre table with serpentine shaped top laid on contre partie enclosed by a cast gilt brass moulding, single frieze drawer, shaped undershelf with amorini mask medallions, raised on mounted cabriole legs. 41" x 26".
55. A 19thC French upholstered armchair with giltwood carved forelegs and castors.
56. A Queen Anne style burr walnut bureau with fall flap resting over 2 drawers with carved cabriole legs with ball and claw feet, 1930's. 26" wide.
57. A Victorian walnut card table with rectangular moulded folding top having baize insert, plain frieze over a jewel carved pedestal supported by 4 scroll legs. 36" wide.
58. A Victorian bamboo screen, having glazed panel of pressed ferns and butterfly. 34" high, 22" wide.
59. A Victorian rosewood work table, the serpentine lift top having marquetry panel with a ho-ho bird, palm trees and urn, revealing a fitted interior over a basket enclosed with an S-scroll 4 support basket over a turned and sexagonal moulded pillar, on a 3 footed base. 20" x 17" x 29" high.
60. A set of 6 19thC mahogany dining chairs with carved camel backs, pierced vase splat, drop-in seats and moulded square legs with plain H-frame stretchers.
61. A pair of Georgian mahogany carver chairs with camel backs, wheatsheaf pierced splat, scroll arms, square taper legs and plain H-frame stretchers, the overstuffed seat matching the previous lot.
62. An Edwardian mahogany corner chair with bow back, pierced splats, studded moquette seats and turned stretchers.
63. A Victorian pine cavetto box stool with woolwork lift top.
64. An Antique 'Armada' style steel chest.
65. A barleytwist oak dropleaf table with oval folding top and gatelegs. 39" x 42".
66. An early 19thC mahogany bowfront chest of 2 short and 2 long graduated drawers with pressed brass backplate handles, crossbanded top and bracket feet.
67. An early Georgian walnut veneer chest of 2 short and 2 long graduated drawers with brass loop handles and escutcheons, moulded top having a quarter veneer centre enclosed by 2 cross bands, raised on bracket feet. 38" wide.
68. A barleytwist light oak dressing table with oval mirror and drop handles, early 20thC.
69. A late Victorian American walnut harmonium, marked Bridgport Organ Co, Bridgport, Con. USA.
70. A Victorian rosewood marquetry cased upright piano by Grover and Grover.
71. An Edwardian Sutherland table, the rectangular flaps with canted corners and crossbanded border, on slatted end supports joined by a flat stretcher, 26 1/2" x 32 1/2".





72. A Victorian rosewood torchere stand with circular moulded top, reeded baluster stem, trefoil base. 17" dia.
73. A pair of Edwardian mahogany bedroom chairs with reeded top rail over turned gallery, overstuffed seats on turned legs joined by stretchers.
74. A set of 4 Cromwellian style oak dining chairs having pierced top rail, barleytwist and anthemian uprights, flanking an oval caned panel back, needlework seats and on turned lobed and bobbin legs with conforming H-stretchers.
75. An Edwardian mahogany occasional table with rosewood crossbanded top and undershelf supported by string inlaid square taper legs. 17" square.
76. A 19thC carved oak hall chair in the Jacobean style.
77. A Victorian mahogany open armchair with brown studded vinyl upholstery, scroll arms, serpentine seat and scroll legs.
78. An Edwardian mahogany open armchair with ribbon carved cresting rail, floral upholstery to the panel back, overstuffed seat and arms, turned uprights and forelegs.
79. A Benares brass tray top table with folding hardwood stand.
80. A George III mahogany bowfront corner cupboard with 2 crossbanded doors having H-hinges. 42" high, 28" wide.
81. A 19thC mahogany bow fronted chest of drawers having 2 short and 3 long cockbeaded drawers, later brass handles, on bracket feet. 42" wide. (AF)
82. An oak chest of 2 short and 2 long graduated drawers with brass loop handles and ball turned mirror frame.
83. A Victorian invalid bath chair with sprung steel frame, single steering front wheel and 2 spoked rear wheels, and having wicker seat and footrest.
84. A Victorian mahogany framed 4-fold full-length dressing screen richly decorated in a variety of colourful and varied subject scraps.
85. A 19thC mahogany table mirror with rectangular plate and reeded uprights. 22" high, 21" wide.
86. A Victorian mahogany table mirror with rectangular plate, turned uprights and serpentine base. 23" high, 20" wide.
87. An Arts & Crafts style oak and mahogany cabinet bureau with single full-length door flanking central panelled fall flap with single drawer. 62" wide.
88. A George III mahogany chest of 2 short and 3 long graduated drawers with later brass handles, cupid's bow apron and bracket feet. 41" wide.
89. A late Victorian mahogany chiffonier with shelved mirror back, 2 blind fret drawers over 2 glazed doors, shaped base with cabriole legs and undershelf, in the Chippendale manner. 48" wide, 82" high.
90. A George III mahogany chest of 4 graduated drawers with brass solid backplate loop handles, moulded top and bracket feet. 38" wide.
91. An Edwardian occasional table with undershelf and smaller similar example. (2)
92. Two ladderback chairs, one rush seated, the other solid.
93. A bergere panelled mahogany stick stand with liner, early 20thC.
94. A wrought iron standard lamp with bulbous glass shade.
95. A reproduction mahogany dinner wagon with tray top.
96. A green lacquer and chinoiserie decorated standard lamp, 1920's.
97. A Victorian mahogany tripod table with rectangular tilt top with taper turned pillar and 3 outspread legs. 18" x 26".

98. A Georgian oak tripod table (AF).
99. An Edwardian mahogany firescreen with rose patterned silk panel. (AF). 46" high, 27" wide.
100. BBC Changing Rooms. A rustic timber framed bench and en-suite glass top rectangular coffee table designed by Linda Barker and constructed from reclaimed timber by 'Handy' Andy Kane.
101. An Edwardian breakfront china cabinet with single glazed door, transfer printed decoration, raised on legs. 43" wide.
102. A mahogany traytop chest of 2 short and 1 long graduated drawer with brass swan-neck handles and square legs, in the Chippendale manner.
103. A 19thC display cabinet on stand with astragal glazed door and Greek key moulded cornice, painted in blue and highlighted in gilt. 6' high, 3'6" wide.
104. A late 16thC. oak coffer with 3 plain panels to the lid, demi-lune frieze and 3 lozenge carved panels to the front, raised on stiles. 46" wide, 20" deep, 24" high.
105. A Georgian mahogany side chair with canted overrun cresting rail, reeded uprights, pierced splat, drop-in seat and square taper legs.
106. A spindle back rush seated carver chair and another 19thC example.
107. A set of 6 rush seated barback chairs with turned legs.
108. A red lacquer side cabinet with lid top. (AF)
109. A Victorian mahogany hunting table with circular folding top painted with hunting and military scenes, supported on a beech folding base. 16" dia.
110. A late Victorian beech music stool with cabriole legs.
111. A Victorian painted pine chest of 2 short and 3 long graduated drawers with knob handles and turned feet.
112. A Victorian ash and elm grandfather chair with turned legs.
113. An Edwardian lady's and gents pair of open armchairs with shell carved cresting rail and cabriole legs.
114. A George III mahogany chest of 2 short and 3 long graduated drawers with brass swan-neck handles, moulded top and bracket feet. 33" wide, 35" high.
115. A pair of ash and elm spindleback captain's chairs with ring turned forelegs.
116. A Victorian walnut spoonback side chair with overstuffed seat and turned forelegs.
117. A Victorian and later stripped pine dresser with plate rack top, the base having 3 central drawers flanked by full-length doors, on plinth. 5' wide, 6' high.
118. An Edwardian string inlaid marquetry double bedstead by Staples.
119. A Victorian brass double bedstead.
120. A Victorian painted pine single bedstead.
121. A Victorian gilt framed rectangular wall mirror. 20" x 38".
122. A polished steel hanging lantern with glazed panels and hanging rods.
123. A polished steel hanging lantern with glazed panels and hanging rods.
124. A polished steel hanging lantern with glazed panels and hanging rods.
125. A polished steel hanging lantern with glazed panels and hanging rods.
126. A cut crystal 10-light electrolier
127. A cut crystal 10-light electrolier
128. A brass and crystal 5-light electrolier.
129. A pair of 2 light brass and crystal wall sconces, (matching previous lot).



Lot No. 104





130. A late Victorian walnut overmantel mirror with bevelled rectangular plate, moulded and reeded frame. 51" high, 48" wide.
131. A Georgian mahogany chest of 2 short and 3 long graduated flamed veneered drawers with turned knob handles, shaped apron and bracket feet.
132. A George III mahogany bowfront commode chest. 26" wide. (AF)
133. A Victorian footstool with overstuffed seat, the oak frame having gadrooned and heavily carved sides and fluted feet.
134. A Georgian oak chest of 2 short and 3 long graduated drawers with later knob handles and bracket feet. 39" wide.
135. An oak panel back settle with baluster legs and low level stretcher, constructed from period timbers. 45" wide
136. An oak gateleg dining table, the oval folding top having demi lune carved banding, raised on reeded square legs with swell feet. 58" x 43".
137. A Victorian rosewood breakfast table, the circular top banded with pollard oak with brass stringing, on a turned pillar with trefoil base and scroll feet. 4' dia.
138. An Edwardian mahogany writing table with leather inset top and 2 frieze drawers with brass swan-neck handles and square taper legs with spade feet. 4' x 2'6.
139. A 1930's mahogany kneehole desk with leather inset top, central drawer and 3 drawers to each pedestal, raised on 3 short cabriole legs. 52" x 30".
140. A pair of late 18thC oak country made dining chairs, having reeded frame, rush seats, on square section legs joined by stretchers.
141. A pair of Regency rosewood salon chairs, having a brass inlaid top rail over twin scroll tie rails, cane seats and on sabre legs.
142. A 19thC flamed mahogany night table with tray top and tambour door, raised on moulded square legs.
143. A Victorian mahogany 3 tier whatnot with turned uprights and brass cup castors. 18" x 15" x 35" high.
144. A 19thC dining table with folding flaps.
145. A 17thC oak 3 panelled coffer with scoop carved frieze and raised on stiles, 58" wide, 27" high.
146. A mahogany chest of 4 graduated drawers each with cockbead moulding and ebonised turned wooden knobs, on lobed feet, 41 1/2" wide.
147. A profusely carved 19thC Indian hardwood jardiniere stand, the circular top inset with specimens of marble and other hard stones, 17" dia, raised on 3 elephant mask legs leading to a circular moulded platform, on carved feet. 29" high.
148. A late Victorian walnut buffet with carved splashback and frieze to upper shelf, turned pillars to lower shelf with 2 panel doors, raised on turned legs with brass and ceramic castors, 48" wide.
149. An early 17thC oak coffer, with plain 3 panel top and 2 fielded panels to the front, raised on stiles, 42" wide, 18" deep, 24" high.
150. An early 19thC kneehole dressing table with leather inset top and drab style painted decoration, 42" wide.
151. A Victorian tub chair with upholstered bow rail and seat with 5 turned uprights, turned front legs bearing the trade label to the back 'J Ward manufacturer to The Queen and the Royal Family patentee invalid chairs and carriages of every description'.
152. A 1930's barleytwist oak gateleg dining table.
153. A George III mahogany D-end table with reeded top, plain frieze and turned legs.
154. A Victorian walnut nursing chair with shell and scratch carved cresting rail, pink button dralon upholstery to back and seat and turned front legs.

155. An Edwardian mahogany demi-lune card table with satinwood crossbanded folding top inset with bays, shaped undershelf and square taper legs with ceramic castors, 36" wide.
156. A 19thC. dropleaf table, with square taper legs.
157. A George III mahogany tea table with rectangular folding top, flame and crossbanded frieze and square legs, 36" wide.
158. A walnut partner's desk with leather inset top, each side having a pedestal of drawers and another with single drawer and cupboard, early 20thC, 54" x 40".
159. A Victorian kitchen table with mahogany painted top, painted base with reeded legs, 34" x 57".
160. A Victorian pine kitchen table with turned legs, 38" x 65".
161. A harlequin set of 6 Victorian ash and elm smoker's bow chairs with ring turned legs and double-H frame stretcher.
162. A set of 4 Edwardian oak dining chairs with carved and pierced vase splats, drop-in seats, square taper legs with swell feet.
163. A pair of Edwardian mahogany bedroom chairs with double S scroll ladder backs.
164. A pair of George III mahogany side chairs with carved splat backs in the Chippendale manner, tapestry overstuffed seats, square legs and H-frame stretcher.
165. A George III mahogany side chair with pierced vase splat, tapestry overstuffed seat and square legs with H-frame stretcher.
166. An Edwardian walnut open armchair with pierced vase and bar back, overstuffed seat and square taper legs.
167. A late 18thC tripod table with circular mahogany top and painted pillar with tripod base.
168. A Victorian mahogany footstool with circular woolwork top, carved frame and turned legs, 13" dia.
169. A George III low Windsor open armchair with yew back enclosing 3 pierced splats and 4 spindles, shaped arms, elm saddle seat, turned legs and crinoline stretcher.
170. An 18thC provincial comb back Windsor chair.
171. An 18thC elm ladderback chair with later applied rocking bows.
172. A pair of Adam Revival oak serving tables with scoop carved frieze, oval patera and applied decoration, raised on 6 fluted square taper legs co-joined by a shaped moulded stretcher. 59" wide.
173. A Victorian ash and elm Windsor chair with pierced splat and spindle back, shaped arms, ring turned legs and double-H stretcher.
174. An early 19thC elm Windsor chair with spindle back, ring turned forelegs and H-frame stretcher.
175. A walnut veneered 2 door wardrobe on plinth, 53" wide, 66" high.
176. An Art Nouveau inlaid mahogany cased upright piano by Arthur Allison, overstrung.
177. A Regency mahogany twin pillar dining table with oval ended double moulded top, having 2 extension leaves. 44" x 94" max.
178. A set of 7 George III dining chairs comprising carver and 6 side chairs with ball and pierced bar backs with single satinwood panel, drop-in seats and turned forelegs, together with a second matched carver chair with reeded arms. (8)
179. Spare lot.
180. A Regency lacquered work table with chinoiserie decorated and fitted interior together with similar decoration to the lyre supports and having carved shell and paw feet. (AF)
181. An Edwardian mahogany Sutherland table with canted top and square section legs.
182. A 17thC and later refectory table with 3 plank top, plain frieze, heavy bulbous legs and low level stretcher, 95" x 32".
183. A Victorian mahogany tripod table with oval shaped tilt top, turned pillar and 3 outsplay legs.



184. A Gothic oak pedestal with a Minton salt glazed font and cover, having year cypher and cartouche, St Mary's Nottingham to base.
185. An Edwardian oak saddle, boot and whip rack.
186. A William IV mahogany buffet, each tier having tray moulding to 3 sides, supported on reeded taper uprights terminating in bulbous feet with heavy brass castors. 48" wide, 51" high.
187. A Victorian mahogany sideboard with scrolling framed mirror back, breakfront with flamed veneer drawers over 2 pedestals with applied carved decoration, on plinth, 73" wide.
188. A lead wall cistern with armorial and date 1768, 20" wide, 9" high to lip.
189. An early 19thC mahogany screen pole with ebony strung stepped base.
190. An 18thC walnut framed cushion mirror of rectangular form, 33" x 27".
191. A pair of early 19thC pier glasses with gilt plaster fern and flower decoration, each having 3 beaded shelves, 39" high.
192. A Victorian oval wall mirror with gilt carved plaster frame, 31" x 22".
193. A small Victorian walnut framed circular stool with porcelain ball feet and moquette top.
194. An early 20thC oak coaching table of folding circular form supported by a single gateleg, 28" dia.
195. A pair of Arts & Crafts iron chandeliers, c.1930.
196. A pair of Arts & Crafts iron chandeliers, c.1930.
197. A pair of Arts & Crafts iron chandeliers, c.1930.
198. An Edwardian string inlaid mahogany lady's writing table with two drawers and shaped top with leather inset and two frieze drawers, raised on square taper legs with splay feet 36" wide.
199. An Edwardian mahogany oval wall mirror with beaded frame and bevelled plate. 37" x 24".
200. A Victorian marbled slate fire surround with cast metal insert.
201. A Victorian mahogany toilet mirror having an arched cushion frame enclosed bevelled plate (AF), on circular uprights with melon finials, fluted end supports, on a concave platform plate 41" X 30 1/2".
202. A circular brass footstool with dralon upholstered cushion, on 3 wooden bun feet.
- 203 to 250. Spare Lots.

Commencing 2.30pm

Silver & Platedwares

251. A late Victorian cut glass scent bottle, of barrel shape, with horseshoe and hobnail panels, silver collar and flattened lozenge stopper, London 1938, 6" high.
252. A 'Bristol' blue glass scent bottle, rectangular, with a silver mounted collar and knotted stopper, London 1918, 4 1/4" high.
253. A 19thC tortoiseshell calling card case, inlaid in silver with trellis engraved tablets, 4" x 3" (some silver losses).
254. A pair of Edward VII glass scent bottles, the spherical bodies with diamond and hob nail cutting, each having a silver collar and hinged cover embossed with flowers and foliage, Birmingham 1907, (one cover damaged, lacking inner stopper), 5 1/4" high.
255. A set of 6 EPNS coffee spoons with shell and scroll cresting, cased.
256. A pair of Edward VII silver pepperettes, each with straight sides and swelling base, the domed covers with baluster finials, on 3 scroll feet, 2 3/4" high, Chester 1907, cased.
257. A set of 4 George V silver menu holders, each modelled as double wishbones, on circular bases engraved 'S' and 'May 29th 1915', Birmingham 1911, weighted.
258. A pair of George V silver salts, of circular shape with raised fluted rims, on 3 pad feet with shell knees, sapphire liners, Birmingham 1912, together with 2 condiment spoons.
259. An Edward VII silver footed fruit bowl by James Dixon, the well pierced with quatrefoil trellis, scrolls and foliage within a cast border of shells and foliage, the raised foot with a similarly cast flange, 10 1/2" dia, Sheffield 1902, 25ozs.
260. An Edward VII silver pedestal dish, the shallow lobed bowl with everted rim, repousse with fruits, shells, scrolls and foliage and pierced with ringed panels on a circular bead knopped pedestal, the domed foot with conforming ornaments, Sheffield 1905, 11" diameter, 6" high, 18ozs.
261. A Victorian red morocco leather bound desk folder, the front embossed with an applied silver cover, pierced with cartouche, diaper panels, C scrolls, flower and foliage, hallmark rubbed, probably 1888, 12" x 10".
262. A set of 6 silver goblets, the bowls with applied foliage issuing from the base, knopped stems and on circular foot with reeded rim, 5 1/4" high, London 1977, 36ozs gross approx weight, cased.
263. A set of 6 silver teaspoons, Sheffield 1957, in fitted case.
264. A Russian white metal cigarette case, having a planished surface, the hinged lid engraved with scroll cartouche, fitted with a fabric pull-through tassel, 4" x 2 3/4", (tests as silver).

265. A silver saucer, London 1961, 3³/₄" dia, 2ozs.
266. A George V silver quatrefoil dish, London 1934, set with a 1676 florin, together with 2 matching dishes, marked 'Sterling', both set with coins, 10¹/₂ozs gross.
267. A middle Eastern white metal scent bottle, of triform cushion shape, suspended on a chain.
268. A Middle Eastern white metal scent bottle, cast with flowerheads, mounted with cabachon agates, suspended on a chain.
269. A Meerschaum and amber pipe, modelled as a naked lady with flower basket, white metal mount, in fitted case, 6¹/₄" long.
270. A Meerschaum and amber pipe, with silver mounts, c.1909, in fitted case, 6³/₄".
271. A George V silver casket, with padded and fabric hinged cover of circular shape, London 1911, 5¹/₄" dia, an Edward VII cut glass pin box with chased silver cover, Birmingham 1905, a silver backed hairbrush and matching comb, Birmingham 1919, an ebony pin box, etc.
272. A Victorian silver gilt rectangular box, the hinged cover engraved with crest and latin motto, London 1865, 3¹/₄" wide, 2¹/₂ozs.
273. A Russian silver box with Niello body, of rectangular shape with hinged cover, 3¹/₄" wide, 2¹/₂ozs.
274. A pair of Victorian silver fiddle pattern gravy spoons by Henry Herbert, London 1860, 11³/₄", 8.5ozs.
275. A George III silver-gilt berry table spoon, by Hester Bateman, the bowl repousse with fruits and foliage, the handle with acanthus scrolls, London 1787, together with a matching preserve spoon, London 1806, 3.5ozs gross.
276. A set of 4 EPNS serving spoons, the bowls repousse with fruit and foliage, the twist handles having Dickensian character finials, c.1870.
277. A set of 12 Edward VII tea knives and forks having engraved silver blades and mother of pearl handles, Sheffield 1906.
278. Five Victorian silver fiddle and thread table spoons, by William Eaton, London 1843, 16ozs.
279. A set of 12 Edward VII silver fiddle pattern teaspoons, Sheffield 1908, engraved with the initial 'T', 10ozs.
280. A set of 10 Victorian fiddle pattern table forks, London, various dates, together with 2 similar, Birmingham 1925, engraved with the initial 'T', 31ozs gross.
281. A set of 9 Victorian fiddle pattern dessert spoons, London, various dates, together with 3 others, Birmingham 1922 and London 1831, engraved with the initial 'T', 19.5ozs gross.
282. A matched set of 14 silver fiddle pattern dessert spoons, various hallmarks, 19th/20thC, engraved with the initial 'T', 23ozs gross.
283. A pair of Victorian fiddle pattern sauce ladles by William Eaton, London 1839, 4.5ozs.
284. Three George V silver napkin rings, engraved with foliate scrolls around a vacant cartouche, Chester 1911.
285. A set of six William IV silver Old English teaspoons, engraved with initials, London 1830, 3ozs.
286. A George V silver 3-piece cruet set, the bodies pierced with scrolls on bun feet, sapphire glass liners, Birmingham 1920/21 together with a condiment spoon, Sheffield 1918.
287. A George V child's silver spoon and fork, with trefoil finials, Sheffield 1911/12, in fitted case.
288. A Victorian silver napkin ring, plain, with a milled rim and engraved with initials, Sheffield 1879, another with pierced panels, Chester 1911.
289. A silver bladed fruit knife with mother-of-pearl handle, a cut glass scent bottle with silver collar, a small table candlestick, and a silver cigarette case (4).
290. A Victorian silver mug, with half fluted body, and embossed with ribbon ties, foliate swags and pendant flower forms, and leaf capped handle, Sheffield 1892, 3¹/₄" high, 3¹/₂ ozs.



Lot No. 260, 301, 304, 261, 254 & 300

291. A silver mustard of compressed circular outline, the slightly domed top with knopped finial, scroll handle, and on claw feet with shell knees. Birmingham 1945.
292. A Victorian silver backed five piece dressing table set, embossed with putti, birds, scrolls and trellis, comprising 2 hair brushes, clothes brush, hand mirror and comb.
293. A George III silver berry spoon, by William Eaton, the bowl repousse with fruit and engraved with foliage, engraved handle, London 1795, together with four Old English Spoons, 18thC. London various dates, 9ozs.
294. A pair of George III silver Old English sauce ladles, London 1808, 5ozs.
295. Four George III Silver Fiddle pattern tablespoons, London 1811, 9ozs.
296. Four Victorian silver fiddle pattern condiment spoons, various dates, together with a William IV butter knife, London 1835.
297. Five George IV silver fiddle pattern table forks, (one engraved with initial), London 1823, another, 1819, 13.5ozs.
298. Five 19thC silver fiddle pattern dessert forks, various hallmarks, together with 2 George IV Old English tableforks, London 1829, and a Victorian fiddle pattern spoon, London 1849, 13ozs gross.
299. A child's silver spoon and fork with engraved borders and initials, Sheffield 1938, together with a set of 6 teaspoons, Birmingham 1933, 4.5ozs gross.
300. A late Victorian silver footed fruit bowl, of quatrefoil lobed outline, repousse and pierced with flowers, foliage, C-scrolls and trellis, everted rim with conforming ornament, on oval domed foot, London 1895, 10" dia, 17ozs, with glass liner.
301. A pair of late Victorian silver candlesticks, of rococo influence, cast with acanthus scrolls, each with removable sconce, knopped baluster stem, on square spreading foot, London 1898, 9 1/4" high, loaded bases.
302. A silver 3-piece tea service, of rounded oblong outline, with gadroon rims, on bun feet, the teapot with composition handle and finial, Sheffield 1925, 36.5ozs gross.
303. A silver tea tray, of rectangular outline, with rounded corners, the gadroon rim with shell casting, 16 3/4" wide, Sheffield 1927, 49ozs.
304. A pair of late Victorian silver composite column candlesticks, with removable sconces, with acanthus capitols, fluted stems, on square stepped bases with gadroon borders, Sheffield 1891, 9" high, loaded bases, (slight damage to one base).
305. A set of 6 silver fiddle pattern table forks, Sheffield 1917, 14.5 ozs.
306. A set of 6 silver fiddle pattern dessert spoons, London 1856, 9ozs.
307. A set of 6 silver fiddle pattern dessert spoons, Sheffield 1919, 10ozs.
308. Four silver napkin rings, various dates.
309. A pair of Victorian silver sugar tongs, London 1847, another pair, smaller, with engraved decoration, 1886.
310. A George III silver condiment ladle, London 1826, a silver shoe horn, Birmingham 1933, a sterling silver stamp envelope and an Edward VII teaspoon with twist handle and pheonix finial, 1902. (4)
311. Five William IV silver fiddle pattern teaspoons, London 1834 and a quantity of Victorian teaspoons, various dates, 8 1/2ozs gross.
312. A qty George III and later silver teaspoons, 5ozs gross.
313. A pair of silver fiddle pattern tablespoons, Sheffield 1917, and a Victorian fiddle pattern dessert spoon, London 1839, 6ozs gross, together with a qty of EPNS teaspoons, etc.
314. A set of 6 plus 2 coffee spoons with bean finials, Birmingham 1929, cased.
315. A late Victorian/early Edward VII silver 3-piece tea service, of panelled oval shape with reeded lower body, angled handles, the teapot with composition handle and finial, on reeded foot, engraved initial Sheffield 1897 and 1902, 32.5 gross.
316. An Edward VII silver 3-piece tea service by C S Harris and Sons Ltd, of shouldered boat shape, with reeded borders, the teapot with domed cover, composition finial and scroll handle, engraved initial, London 1908, 28ozs gross.
317. A George V silver card case, rectangular with a shaped edge, having a small hinged cover and charm chain and loop, 3 3/4" x 2 3/4", Birmingham 1912, 2ozs.
318. A late Victorian silver vesta case, of plain outline engraved with initials, Birmingham 1898, a machine turned match holder, Birmingham 1926 and a silver hip flask cover, Sheffield 1926, 7ozs gross. (3)
319. A pair of silver sauce boats, with gadroon rims, flying scroll handles, on 3 stepped pad feet, Sheffield 1932, 10ozs gross, 7" wide over handles.
320. A silver small sauce boat, with bead and reel rim, double scroll handle and on flared foot, 4 1/2" over handle, Birmingham 1930.
321. A pair of silver salts, of circular outline with pierced walls, on 3 bun feet, sapphire glass liners, 2" dia, Birmingham 1928, together with an Edward VII silver mustard, with oval reeded body, chased handle, sapphire liner, Sheffield 1904 and 3 condiment spoons.
322. An Edward VII silver epergne, having a central tapering vase, with frill edge, 3 further vases, on domed foot, 7" high, Birmingham 1907. (AF)
323. A George V silver faced watch case by Elkington & Co. of rectangular outline with serpentine arch, blue velvet lining, and fitted with an EPNS pocket watch with lever movement, the case 4 1/4" x 5 3/4"

324. A pair of George V silver napkin rings, of concave circular shape with bead rim, Sheffield 1919.
325. A machine turned silver napkin ring and two others, various hallmarks 20thC.
326. A Victorian silver heart-shaped frame, London 1896 (no back) 7" high, a George V silver photograph frame, Birmingham 1918, 4 1/4" x 3", a leather frame, two small books of poems and a bakelite letter opener.
327. A pair of George IV silver Old English tablespoons, London 1828, 4ozs.
328. A pair of George VI silver Old English tablespoons, Birmingham 1937, 5ozs.
329. A set of 6 George III silver Old English teaspoons, London 1805, 2 1/2ozs.
330. Three silver fiddle pattern dessert spoons, another, Old English, 19thC, various hallmarks, and a set of 6 EPNS soup spoons.
331. A set of 6 Victorian silver fiddle pattern teaspoons, London 1956, 3 1/2ozs.
332. A pair of Victorian silver sugar tongs, London 1845, another pair, London 1868, a George V caster spoon, Sheffield 1919 and a butter knife, 1918. (4)
333. A George V silver trumpet vase with shaped pan top, tapering stem and on swept circular foot, Chester 1926, 9 1/4" high. (AF)
334. A set of 6 silver goblets by Garrard, produced to commemorate the Silver Wedding Anniversary of Her Majesty Queen Elizabeth II & His Royal Highness the Duke of Edinburgh, no. 2251 of 2500, the cup shaped bowls engraved with cypher, on knopped and baluster stems, engraved with vines, spreading foot with conforming engraving, 6" high, 36ozs. gross with certs and in fitted box
335. A Victorian silver communion jug, of globular outline, having raised quadrant bands, half-filled loop handle, 4 1/4" high, Birmingham 1893, 6 ozs.

336 to 477. Spare Lots.

Jewellery & Bijouterie

478. Costume jewellery.
479. An Art Deco cigarette case and holder, enamelled in red and black, cased.
480. A Victorian gilt metal seal fob, with coloured knop stone and a cameo carved press stone.
481. Wedgwood cameo rings.
482. Wedgwood cameo rings.
483. Wedgwood cameo rings.
484. A Victorian yellow metal memorial bracelet, with cabochon coral stone to the front and verso glass insert.
485. A yellow metal stick pin, set with a white stone.
486. Costume items mainly earrings and necklaces.
487. Costume items mainly brooches.
488. Costume items, mainly bracelets.
489. A Gents 9ct gold monogrammed signet ring and another.
490. Various white metal rings.
491. A 9ct gold (import mark London) bracelet, and 2 memorial pendants.
492. Diamante earrings, small jewellery items etc.
493. An assortment of ladies and gents watches.
494. A Lady's 9ct gold wristwatch (Chester 1929) on an expanding bracelet.
495. A Lady's 9ct gold Omega wristwatch, round champagne dial, baton numerals, on a heavy bark finish 9ct gold bracelet.
496. An oversized Ashtime fashion watch.
497. A Lady's 9ct gold Rotary wristwatch on expanding plated bracelet.
498. An Omega Lady's oval 9ct gold watch with champagne dial on a 9ct gold bracelet.
499. A Gents Carvel skeleton wristwatch c1975.
500. A Lady's Peerex wristwatch on a black cocktail strap.
501. A Lady's 9ct gold Evente watch on an expanding plated bracelet.
502. Costume jewellery.
503. Costume jewellery.
504. Small trinket items.
505. Costume jewellery.
506. Costume jewellery.
507. Natural stone items inc carnelian and lapis lazuli.
508. Trinket items inc cut steel buttons.
509. Trinket items inc shirt studs and miniature ivory spinning top.
510. A stranded white metal bracelet with a central motif set with a small cabachon ruby.
511. Five white and yellow metal small brooches and 2 fox head stick pins.
512. An oriental jadeite medallion.
513. A white metal insect brooch set with seed pearls with an opal body.
514. A pair of bulls eye agate drop earrings in yellow metal marked 375 and an agate shirt stud set with a small diamond.
515. A miniature folding button hook in a blue enamelled enclosure.

516. A butterfly shaped brooch, the tortoiseshell body having gold piquet-work, set with red stones as head and eyes, and a large cabochon moonstone.
517. A 9ct gold diamond and sapphire cluster ring, an eternity ring and a gold plated chain.
518. A pair of opal ear-studs in yellow metal mounts.
519. A fancy link yellow metal bracelet stamped 9K.
520. A diamond and opal cluster ring set in 9ct gold, a central oval opal flanked by two small opals, the circle completed by 10 small claw set diamonds.
521. An 18ct gold dress ring with 3 small opals interspersed with 4 small diamonds. (Hallmark damaged by sizing).
522. A 9ct gold cased hunter pocket watch, inscribed HBH 30.9.30.
523. A gold plated half hunter pocket watch (AF).
524. A cased manicure set (AF) and a silver vesta case.
525. A heavy yellow metal wedding band.
526. A Chinese snuff bottle with internal painted decoration.
527. A 19thC. gilt bronze figure of a kneeling cavalier, 3" high.
528. A 9ct rose gold Albert with T bar and swivel, slightly graduated links, larger towards the centre. 38 gms. Birmingham assay.
529. Two lady's wristwatches.
- 529A. A 17thC white metal lozenge shape Token marked CR IX with a crown, and verso OBS NEWARKE 1645.
530. A gent's wristwatch, by Louis Picard on a brown leather strap.
531. A qty watches and costume jewellery.
532. A qty costume jewellery in a blue velvet covered box.
533. A silver nurses belt buckle with heart motif, cherub and floral decoration, hallmarked London 1901.
534. Costume jewellery, mainly brooches.
535. Three lady's watches, various makers.
536. A qty costume necklaces.
537. A pair of Victorian earrings, white metal studs set with a white stone with drop filigree basket settings to cabachon green stones, probably chalcedony.
538. A small polychrome enamelled white metal pendant or charm of a figurehead or mermaid with small pearl drop.
539. Small items of 9ct gold jewellery. (AF)
540. A double sided agate and malacite fob set in white metal.
541. A Japanese three case blackwood Inro, its face side depicting a lunar hare corded in silk with an amber ojime bead.
542. A Japanese ivory netsuke a study of a Go Master seated teaching a student the most complicated of board games and holding his hand up to prevent his pupil making an incorrect move.
543. A Japanese ivory netsuke, a study of the mythological character Mu Jima magically appearing from a whisp of smoke, her kimono well decorated.
544. A Japanese ivory netsuke a study of a Daimo (Lord) seated, his katana sword by his side and holding his closed fan to indicate silence.
545. A Japanese ivory netsuke, a study of a house-master returning carrying a trussed turtle, his short kimono finely decorated.
546. A Japanese darkwood netsuke, a traditional study of a three-clawed dragon coiled and hiding within its own smoke clouds.
547. A rectangular trap cut smokey quartz stone set in a 9ct gold basket style setting.
548. A diamond set modern design ring, 4 vertically channel set diamonds, total mounted estimated weight 0.32ct, hallmark London, 18ct, maker CJW.
549. A Victorian bar brooch as belt and buckle with seed pearls set in buckle.
550. A hinged bangle, mainly 3 bands joined at centre by a pearl set crescent moon and ruby set star, the whole in yellow metal.
551. A large shell cameo brooch in a neo-classical mount.
552. A diamond solitaire ring, an old brilliant cut diamond, mounted estimated weight 0.25ct, flanked with 2 tiny diamonds set in white and yellow metal, stamped 18ct & Plat.
553. A pair of 9ct gold cuff links, rectangular heads on chain links, plain.
554. A dainty diamond and sapphire floral design collet set cluster ring set in 18ct gold.
555. A diamond and sapphire cluster ring, having a central round mid blue sapphire surrounded by 10 diamonds, set in yellow metal, tests as 18ct.
556. A delicate circular brooch, an open circle with seed pearl set swallows flying around, intersperced with turquoise cabachons, tests as 9ct.
557. A hinged hollow bangle in pink metal, tests as 9ct.
558. A memorial brooch, glass window verso with tri-colour foliate design to front rectangular shape, test as 9ct.
559. Three charms being a bull, a lighthouse and a cathedral, all in yellow metal.
560. A bracelet of twisted curb links to a padlock fastener in 9ct gold, 33.5gms.

561. A novelty pendant of an articulated enebriated man clinging to a lamp post, in yellow metal, tests as 9ct.
562. A pair of earrings, a diamond set stud with a tear drop shaped suspender set with a small diamond set in yellow metal stamped 375.
563. A ruby and diamond cluster ring, central ruby flanked by 6 small clustered diamonds set in yellow metal stamped 750.
564. A 9ct gold plain disc key ring by Payton Pepper 13.6gm.
565. A 9ct gold engine turned cigarette case in leather outer case, by Mappin & Webb, hallmarked Birmingham 1977, 162gm.
566. A diamond set marquise shaped dress ring, old brilliant cut stones, mounted estimated weight 1ct set in yellow metal to shank stamped 18ct.
567. A Victorian bar brooch with central applied engraved disc, in yellow metal.
568. Two bloomed gold Victorian racing trophy lockets, one having a starting flag set on the front in the racing silk colours of the winning owner in enamels (blue and white diagonals), the second having a pearl set horseshoe applied to the front, possibly presented to the owner's lady.
569. A 3-tier diamond cluster ring, claw set in white metal marked 18ct, central diamond mounted estimated weight 0.30ct, surrounded by 20 diamonds total mounted estimated weight 0.65ct.
570. An Art Deco style emerald and diamond set bracelet, 9 slightly graduating rectangular step cut emeralds, surrounded by 12 brilliant cut diamonds, joined by linked pairs of 6 stones, to a tongue and clip clasp, the whole set in white metal stamped 750. Emeralds total mounted estimated weight 5.4cts. Diamonds total mounted estimated weight 6.7cts.
571. A mid size Cartier wrist watch, plain black dial, gold plated case, narrow lugs to black calf strap.
572. A diamond and sapphire 3 stone ring set in white metal, a cornflower blue sapphire flanked by 2 diamonds, total mounted estimated weight 0.50ct.
573. An 18ct gold and white gold diamond set half hoop eternity ring, 9 graduated stones, total mounted estimated weight 0.36ct.
574. A pink metal Victorian ring set with a full double row of graduated garnets.
575. A yellow metal ring, oval head set with a ruby within a star and small diamonds forming the letter L, stamped 15ct.
576. A Victorian memorial brooch in bloomed yellow metal, hair insert to the reverse, with small diamond set front, stamped T.H.P. 15ct.
577. A large agate brooch, white metal mount.
578. An oval malacite brooch, pink metal mount.
579. An 18ct gold 5 stone diamond ring, in line setting, hallmarked Chester 1912.
580. A heavy triple twist yellow metal ring set with 21 small diamonds.
581. A heavy yellow metal ring set with a central faceted citrine, collet set, flanked by 2 cabachon rubies.
582. An 18ct gold and stone set ring of 3 garnets set obliquely with seed pearl surrounds, hallmarked Birmingham 1902.
583. A pair of solitaire diamond ear studs in white metal basket settings, mounted estimated weight (each) 0.40ct.
584. A modern white metal diamond set ring of 3 joined bands to a wide shank stamped 750, mounted estimated weight of diamonds 0.44ct.
585. A wide white metal bangle and matching ring with polychrome decoration, c.1960-70, possibly of Indian origin.
586. A modern yellow metal bracelet of 6 oval plaques with celtic design and central white stone, linked together, stamped 375.
587. A modern yellow metal ring with central diamond set cross motif, stamped 375.
588. A Victorian gypsy style ring set with a central small opal flanked by 2 turquoise stones, hallmarked London 1874, 18ct.





ARTHUR HALLIDAY Esq. ANTRIM
RICHARD FAULKNER R.I.S.A.

Lot No. 625

589. An 18ct gold knot friendship ring, hallmarked Chester 1915.
590. A 9ct gold gypsy style ring set with blue and white opaque stones, hallmark Chester 1902.
591. A white metal triple stone ring, a central pale blue sapphire flanked by 2 small diamonds, collet set, shank stamped 750.
592. A yellow metal ring set with 5 graduated oval pink stones interspersed with diamond chips. Shank stamped with a crown.
593. A gentleman's yellow metal ring, a central rose cut diamond in a square setting, mounted estimated size 3.8mm x 4mm.
594. A triple stone set ring, central green stone (possibly green sapphire) flanked by 2 diamonds set in white metal on a yellow metal shank stamped 750 & 18ct.
595. A cameo set dress ring set in 9ct gold.
596. Three dress rings set with various stones.
597. An Art Deco style ring, rectangular banded white metal setting with 19 small diamonds on a yellow metal shank stamped 0.750.
598. A heavy yellow metal ring with a central diamond set heart shaped motif.
599. A 1920's style ruby and diamond ring, 3 rubies in line, square setting in white metal on a yellow metal shank stamped 18.
600. A silver bangle, engraved with scrolls and foliage, modern.

Day Two

Commencing 10am

Pictures

- 600A. Cecil Hodgkinson. Flighted pheasants in a Lincolnshire landscape, watercolour, signed, 13" x 11"

- 600B. Boston Stump, a colour print, simulated maple frame. 12" x 9"
601. Edwin Hayes (1819-1904). Shipping off the Coast, watercolour, signed bottom left, 3³/₄" x 6¹/₂".
601. A. J. Cot? Fishing boats off the coast in a choppy sea, oil on canvas, signed, 20" x 30", gilt frame.
602. J* W* Carey (20thC). Lakeland landscape with mountains beyond, watercolour, bodycolour, signed and dated 1935 bottom right, 7" x 11³/₄".
- 602A. Late 19thC photograph of gentleman with full length coat being overpainted and heightened in white 7" x 6".
603. Warwick Reynolds (attrib). (fl 1859-1885). 'Dunluce Castle, Portrush, Co Londonderry', oil on board, unsigned. 6¹/₄" x 5¹/₄".
604. 19th Century School. Watering cows in a lakeland setting, oil on canvas, 10" x 12", unsigned, Belfast gallery label verso.
605. J H Craig (20thC). Coastal town with castle, watercolour, signed bottom right, 5¹/₂" x 8¹/₂".
606. J Ward, 1918. 'Ross Castle, Kilarney', pencil drawing, signed and dated bottom right, 6¹/₂" x 9¹/₄", another 'Fairhead, Co Antrim', pencil drawing, signed with initials, 6" x 4¹/₂", oval.
607. Rowland Hill (1873-1952). 'Sheephaven Bay', Co Donegal', watercolour/pencil, signed bottom right, 10" x 14".
608. George Gault (1916-). 'The Gladioli', oil on board, signed with initials bottom right, 14" x 18", labels verso.
609. William Jackson (20thC). 'Portsalon, Co Donegal', oil on canvas, signed bottom left, 20" x 24", title verso.
610. P* W* Daly. 'Blarney Castle', oil on canvas, signed bottom right, 12" x 16".
611. M* Cregan (19thC). 'Lower Lough Erne with Castle Archdale', oil on canvas, signed on stretcher and title verso, 10¹/₂" x 10¹/₂".
612. John Ogilby. 'The Road from Cambridge to Coventry', engraved map with hand coloured vignette and route, plate 61, plate size 13¹/₂" x 16³/₄", c.1695.
613. F Sala, Berlin (pub) (19thC) 'The Burst', 'Tally-Ho', 'Full Cry' and 'A Check', set of 4 hunting, hand coloured lithographs, image size 7¹/₂" x 11³/₄", in maple frames.
614. Charles Collin Middleton (20thC) 'Carbis Bay', seascape, oil on canvas, 20" x 36", signed bottom right, title and artist's name verso.
615. F* Dearden (20thC). 'The Sheep Walk', landscape with stream, country lane and woodland, watercolour, signed bottom left, 9¹/₂" x 14".

616. E Stewart Wood (20thC) 'The Bay at Ackill', coastal landscape, oil on canvas laid onto artist's board, 14 $\frac{1}{2}$ " x 18 $\frac{1}{2}$ ", signed bottom left.
617. Harry Echlin Neill (20thC). 'Port Salon from Buncrana, Co Donegal', coastal landscape, oil on panel, signed bottom right, title bottom left and verso. 11" x 13".
618. Gladys Wynne (20thC Irish) 'Corn Stooks', watercolour over pencil, signed bottom right, 6 $\frac{3}{4}$ " x 92".
619. Edwin Hayes (attrib) (1819-1904) Coal barge and 3 masted schooners at anchor, watercolour, body colour, signed bottom left, 5 $\frac{1}{4}$ " x 10 $\frac{3}{4}$ ".
620. Douglas Alexander RHA (1870-1954) 'Reflections, Du Lough, Conemara', watercolour, signed bottom right, 10 $\frac{1}{2}$ " x 14 $\frac{3}{4}$ ", artist's label verso.
621. G* W* Morrison (20thC) 'Minaun Cliffs, Achill Island', coastal landscape with cottages at the foot of the cliffs, watercolour, signed bottom right, title bottom left, 10 $\frac{1}{4}$ " x 14 $\frac{1}{2}$ ".
622. David Gould (20thC) 'The Layan Canal, Near Newport, Culcavey', water meadows with grazing cattle, watercolour, signed bottom left, 11 $\frac{1}{4}$ " x 15 $\frac{1}{2}$ ".
623. T B Hardy (1848-1897). Shipping off the Coast, watercolour, bodycolour, signed bottom left, 6" x 14".
624. John Doyle (1797-1868). 'The Ruins of Paestrum', watercolour, body colour over pencil, signed bottom left, 12 $\frac{1}{4}$ " x 18".
625. Richard Faulkner RVA (20thC). 'Rough Sea, Ballintoy, Co Antrim', watercolour, signed bottom left.
626. C Roe (1850-1909). Deer in a highland landscape, oil on canvas, signed, 20" x 30".
627. Frank Hider (1861-1933). 'A Summer's Evening, Killarney', 'A September Afternoon', a pair, oil on canvas, signed, 12" x 20".
628. John Falconer Slater (attrib) (1857-1937). Half length portrait of an elderly lady facing front, in a black lace trimmed dress and gold jewellery, oil on board, signed with initials bottom left 29 $\frac{1}{4}$ " x 22".
629. 19thC. 'The Towing Path' and 'The Ferry', hand coloured lithographs, a pair, trimmed to image, 9 $\frac{1}{4}$ " x 13 $\frac{1}{2}$ ", in maple frames.
630. John Trickett (20thC). Winter landscape with gamekeeper and gun dog, reproduction colour print, no 679/850, signed by the artist in pencil, 16" x 19".
631. A late 19thC magazine insert 'Newark from the Great North Road, Newark Castle and Gilstrap Free Library and 3 portrait vignettes, hand coloured, 13 $\frac{1}{4}$ " x 9 $\frac{1}{2}$ ".
632. After Henry Sylvester Stannard. Rural farmyard, feeding the hens, chromolithograph, 9 $\frac{1}{2}$ " x 16 $\frac{3}{4}$ ".
633. Spare Lot.
634. 19th Century. Coastal scene with fishermen and boats by a wooden slipway, buildings beyond, chromolithograph, 6 $\frac{1}{4}$ " x 10 $\frac{1}{2}$ ".
635. 19th Century. 'The Little Shepherdess', hand coloured stipple engraving, trimmed to image, 8 $\frac{1}{4}$ " x 10 $\frac{3}{4}$ ".
636. A silkwork picture, 19thC, worked on a paper and fabric ground with a spray of roses, convolvulus, lilies and other flowers, tied with ribbon, 11 $\frac{1}{2}$ " x 10", rosewood cushion frame.
- 636A. J. Manham (19thC). Moored fishing boats at low tide, a pair, watercolours, one signed bottom left 6 $\frac{1}{2}$ " x 8 $\frac{3}{4}$ ".
637. Thomas Gardner (after). 'The Road from Oxford to Cambridge', single page strip road map, no 80, hand coloured engraving, 19thC 7 $\frac{1}{2}$ " x 11 $\frac{1}{2}$ ".
638. R*** Seadon. Moorland landscape with gun, game dogs flushing out grouse, watercolour, signed bottom left, 4 $\frac{1}{2}$ " x 6 $\frac{3}{4}$ ".
639. 19thC School. "Ruins of Greenalgh Castle near Garstrong" oil on board, 9" x 13".
640. After Louis Wain. A series of humorous canine vignettes with text, on single page. 13 $\frac{3}{4}$ " x 9".
641. 19thC English school. Badger Baiting, oil on board, 6 $\frac{1}{4}$ " x 8 $\frac{1}{2}$ ".
642. 19thC. Shipping off the coast, lithograph, trimmed to image, 3" x 4 $\frac{1}{2}$ ", rosewood frame.
643. E*** Black. Flower fairies emblematic of the seasons, set of four, coloured prints, circles, 7 $\frac{1}{4}$ " dia.
644. S*** T***. 'In Fenton Marsh, Lincolnshire', watercolours, a pair, signed with monogram, 4 $\frac{3}{4}$ " x 9".
646. Robert Mann (fl 1869-92). Coastal scene of fishermen on a stone jetty, with moored fishing boat, watercolour, 13" x 19 $\frac{1}{2}$ ", signed bottom right.
647. Robert Mann (fl 1869-92). Inland waterway with stone buildings on a jetty, moored fishing boats, 13" x 20", signed bottom left.
648. John Falconer Slater (1857-1937) (attrib). Landscape with a bridge over a rocky stream, in a heather clad valley, mountains beyond, oil on canvas, 14" x 21", signed bottom left.

Lot No. 636





649. Edward H Simpson (20thC) Coastal scene with township on the cliff top, watercolour, $10\frac{3}{4}'' \times 16\frac{3}{4}''$, signed bottom left.
650. After William Nicholson (1872-1949) Queen Victoria, monochrome woodcut, $9\frac{1}{4}'' \times 9''$.
- 650A. A pair of Continental lake scenes, gouache, 20thC.
- 650B. George Stubbs (after). 'Mambrino', study of a grey in a landscape, image size $8\frac{1}{2}'' \times 13''$.
- 650C. W H Harrington. Landscape, oil on board, signed.
- 650D. A G Brown. An Arab, encamped at the edge of a village and lake, signed A G Brown RSW, watercolour, $10'' \times 17''$.
- 650E. Douglas Smart (1879-1970). Landscape sketches, watercolour town scene and sketches. Including works from Stamford, Crowland, Boston & Kings Lynn.
651. 19thC. School. Memorial study of 3 members of the Monckton family, cut-outs in profile, watercolour over pencil, with script, $6\frac{3}{4}'' \times 9\frac{3}{4}''$.
652. Richard Dighton (1785-1880) (attrib). 'Sir Tatton Sykes. Bart, Aged 90', watercolour and pencil, bodycolours, $7\frac{1}{2}'' \times 5\frac{1}{4}''$, attribution on mount.
653. 19thC Indian School. A polo match, gouache, $10\frac{1}{4}'' \times 7\frac{1}{4}''$.
654. 19thC Indian School. Birds and insects amidst peonies and roses, painted within a paisley border and a further border of figures in a landscape, watercolour, ink and gold leaf, $15\frac{1}{2}'' \times 12\frac{1}{4}''$.
655. 19thC. School. Eastern Mediterranean coastal township, with fishing boats on a choppy sea, watercolour, indistinctly signed bottom right, $8\frac{1}{4}'' \times 21''$.
656. Herbert? Rollet (1872-1932) Yorkshire coastal village, with fisherfolk overlooking the sea with departing fishing boats, oil on canvas, signed bottom right, $10'' \times 14''$.
658. By and after George Cruikshank. 'Passing Events or The Tail of the Comet of 1853', two-fold etching, $7\frac{1}{4}'' \times 15\frac{1}{4}''$.
659. G Bridgeman (19thC) 'Mr Launde's New Horse' - 'Dedicated to the B— of L—', watercolour and gouache, signed and dated Nov 1874, $14'' \times 10\frac{1}{4}''$.
660. 19thC. School. Half-length portrait of a gentleman, probably a member of the Fane family, watercolour, $11\frac{3}{4}'' \times 9''$.
661. After Robert Thornton. 'Roses', aquatint by Earlom, c.1805, probably trimmed to image on 3 sides, $18'' \times 13\frac{1}{2}''$.
662. 20thC. School. Head and shoulders portrait of a lady, a member of the Fane family, pencil possibly over a photographic image, $14'' \times 11''$.
663. Harry B Neils (after). 'Mr Fox's Hunt Breakfast on Xmas Day', chromolithograph, $13'' \times 26\frac{1}{2}''$.
664. 20thC. 'Moulin de Whyschaete', coloured etching, signed and titled in margin in pencil, label verso, 'Recaptured from the Germans during the 1st Battle of Ypres by No 1 Troop A Sqdn 12 R Lancers Nov 1st 1914', $10'' \times 72''$.
665. T Eustace Regester. A heathland view, watercolour, signed bottom left, $9\frac{1}{2}'' \times 14\frac{1}{2}''$.
666. After Basire. 'The Field of the Cloth of Gold, 7th of June 1520', copper engraving, 1894, private publication, plate size $28\frac{1}{2}'' \times 47''$.
667. 19th Century. 'Fluctuations in Value - By Our Special Purchaser', hand coloured engraving. $10'' \times 7''$.
668. A rare miniature 19thC Sampler, worked in coloured threads with alphabet, numerals, building, trees and animals, inscribed Sarah Neave Moniter, Aged 13, Dec 20th done 1838. $5\frac{1}{4}'' \times 3\frac{1}{2}''$.
669. 19thC School. Naive landscapes with figures by water and buildings, painting on glass, maple frames, $12'' \times 15\frac{1}{2}''$.
670. John Speede (after). 'The Kingdom of Great Britain and Ireland', facsimile map, $14\frac{1}{2}'' \times 19''$.
671. Saxton (after). Derbyshire, facsimile map, $16\frac{1}{2}'' \times 19\frac{1}{2}''$.

672. 19thC. School. Travellers on a mountain pass, watercolour and bodycolour, unsigned, $11\frac{3}{4}'' \times 9\frac{1}{2}''$.
673. Victor Robert Watt (1886-1970) (Australian). Landscape, rolling meadows with sheep and copse, watercolour, signed bottom left, $8\frac{1}{4}'' \times 11\frac{1}{4}''$.
674. Early 20th Century. Fox and prey, black and white engraving, $22'' \times 33\frac{1}{2}''$.
675. James Holland (attrib) (1799-1870). Italian lake with boats and figures, watercolour and body colour, signed with initials bottom left, $9\frac{3}{4}'' \times 13\frac{3}{4}''$.
676. E J Collyer (20thC British). Ebb Tide at Sunset, oil on canvas, signed and indistinctly dated bottom left, $20'' \times 30''$.
677. After Millicent. A View of Tattersal Castle in Lincolnshire, originally published 1727, facsimile print, $13'' \times 17''$.
678. Sydney J Cashing (by and after). 'The Cathedral, Lincoln', etching, signed in pencil in margin, c.1910, $5\frac{1}{2}'' \times 6\frac{1}{2}''$.
679. After Garland. 'Norwich Cathedral', hand coloured steel engraving, 19thC, $5\frac{1}{4}'' \times 6\frac{1}{2}''$.
680. G. E. Hackfourd (20th century British) "Boston Stump", watercolour over pencil, signed bottom right $14'' \times 10''$.
681. Bert Cutts. "On the Llugwy, North Wales" - river landscape, oil on canvas, signed and title bottom right $30'' \times 20''$.
682. William Bromley (after). Birds Nesting and Taking a Break, studies of children in a rural landscape, a pair, chromolithographs, $12'' \times 17''$.
683. 19thC. English School. Cottage landscape with children fishing from a small dinghy, oil on canvas, unsigned, $16\frac{1}{4}'' \times 24\frac{1}{4}''$.
684. Sidney Pike (19th/20thC). Fisherman in a highland stream, with cattle on the bank, mountains beyond, oil on board, signed and dated 1906 bottom left, $8\frac{3}{4}'' \times 13\frac{1}{2}''$.
685. Sidney Pike (19th/20thC). Highland cattle in a Scottish landscape, with mountain stream, oil on board, signed and dated 1906 bottom left, $9'' \times 13\frac{1}{4}''$.
686. William Sinclair (19th/20thC) 'On the Conway, North Wales', 'Airey Forces - Ullswater', a pair, on canvas, signed and dated 1906 bottom right, $14'' \times 10''$.
687. David Cartwright (by and after) 20thC. 'Scots Greys - Charge', reproduction colour print, signed in pencil and numbered 179/500, $17'' \times 26\frac{3}{4}''$.
688. Peder Mork Monsted (1859-1941). 'Friderikaberg Harg 1926', river landscape with tree lined bank and winding path to the side, oil on canvas, signed, title and date bottom left, $16'' \times 24\frac{1}{2}''$.
689. After Gainsborough. 'Mrs Siddons', monochrome print by Armytage, on fabric, proof, black/gilt glass, $10'' \times 8\frac{1}{2}''$.
690. After Bartlett. 'Innisfallen, Lake of Killarney', and 'Conway Castle', hand tinted steel engravings, 19thC, $4\frac{3}{4}'' \times 7''$.
691. 19thC. School. Coastal view with figures, thatched cottage and boats, oil on tin, $4\frac{1}{4}'' \times 5\frac{3}{4}''$, together with a black and white silhouette portrait of a 19thC gentleman, in ebony frame, $5\frac{3}{4}'' \times 4\frac{3}{4}''$ overall.
692. Salvatore Colaccio (attrib) 20thC. "The Sailing Ship 'Gazelle' Off Malta", oil on board, signed bottom right and title and artist's name verso, $19\frac{1}{2}'' \times 29\frac{1}{2}''$.
693. Follower of Edward Seago. Italian fishing port, oil on canvas, signed with initials in an oval. $20'' \times 24''$.
694. Fred Appleyard (1874-1963) "Farm Saltfleet", oil on board, signed bottom right, $17\frac{1}{2}'' \times 23''$, inscribed and biog. verso.
695. After Gainsborough. Portrait of a lady, chromolithograph, late 19thC, $20\frac{1}{2}'' \times 15''$.
696. Style of J F Herring, Snr. Horses and sheep in a landscape by lakeside, with figures on the bank, wayside inn in background, oil on panel, $22\frac{1}{4}'' \times 35''$.
697. R*** Johnson. 19th/20thC, girl and baby by an open hearth, oil on artist's board, signed and indistinctly dated 1915? bottom right, $7'' \times 9''$.
698. Joseph Halford Ross (1866-?). Thatched cottage in a country garden, watercolour, signed bottom left, $14\frac{3}{4}'' \times 10\frac{1}{2}''$.



Lot No. 696



699. 19thC. School. 'The Postman', terrier with letters in it's mouth, oil on canvas, 14 $\frac{1}{2}$ " x 19 $\frac{1}{2}$ ".
700. William L Wyllie (1851-1931). Barges on the River Thames, Tower Bridge in the background, etching, signed, 11 $\frac{3}{4}$ " x 7 $\frac{1}{4}$ ".
701. After Laura Knight (1877-1970). Rear view of a female figure, seated, etching, signed with initials, 6 $\frac{1}{4}$ " x 9 $\frac{1}{4}$ ".
702. John Piper (1903-1992). 'Holme, Nottinghamshire', coloured print, signed in pencil, 1 of 20 proofs, 20 $\frac{1}{2}$ " x 27 $\frac{1}{2}$ ".
703. John Piper (1903-1992). Abstract landscape, ink, wash, watercolour, signed bottom right, 13 $\frac{1}{4}$ " x 20".
704. John Piper (1903-1992). 'Penybont Ford Congregational Church', photolithograph, signed in pencil 55/75, (unframed), 27" x 22 $\frac{1}{2}$ ".
705. Eliot B Moses (20th century). Alpine lake in the Dolomites, watercolour, signed and dated 7-14-37, 21 $\frac{1}{2}$ " x 16 $\frac{1}{4}$ ".
706. Yves St. Laurent (after) (20thC). 'Les Quatres Saisons, L'Automne', reproduction colour print, 29 $\frac{1}{2}$ " x 23 $\frac{1}{4}$ ".
707. 19th/20thC. Middle Eastern School. Pagoda with deities, slaves and animals, ink, watercolour, gouache, 27 $\frac{1}{2}$ " x 19 $\frac{1}{2}$ ".
708. Two reproduction photographic views of the early 20thC, 'St Peter's Hill, Grantham and 'Angel Hotel, Grantham', 20" x 30 $\frac{1}{2}$ ".
709. Daniel Sherrin (attrib) (1868-1940). Figures seated by a pond before a thatched cottage, at sunset, oil on re-lined canvas, signed bottom right, 12" x 18".
710. 19thC School. Gamekeeper and dogs in a landscape, oil on canvas, 12" x 16".
711. Edgar Woollatt. 19thC, 'A Brittany Market', watercolour, bodycolour, signed bottom left, 21 $\frac{1}{4}$ " x 27 $\frac{1}{4}$ ".

712. 19thC. School. Temple landscape with queuing figures, musicians and camel rider, oil on canvas, 36" x 24 $\frac{1}{4}$ ", enclosed within a gilt frame with mirror panel below.
713. Mary Stevens (19th/20thC). Herbaceous borders before a bridge, water colour, signed bottom right, 14" x 9 $\frac{1}{4}$ ".
714. W J Muller (19thC). River landscape with stone bridge, watercolour, signed and dated 184? bottom left, 7" x 9 $\frac{3}{4}$ ".
715. Wm Cullow c.1831. Figure seated on a log by a meandering river, township beyond, watercolour, indistinctly signed and dated bottom right, 7 $\frac{1}{4}$ " x 10".
716. An early 19thC petit point needlework picture, worked in mixed threads and depicting 2 young girls seated in a landscape, on black velvet ground, 10" x 12 $\frac{1}{4}$ ", maple frame.
717. Florence Boothby. 19th/20thC, 'Susan Edith Reeve', aged 1 year, 1902, head and shoulders portrait, watercolour, signed with initials, details verso, 4" x 3 $\frac{1}{4}$ ".
718. 19thC. School. Study of an Indian polo player, pencil, watercolour, blue script margins, 7 $\frac{1}{4}$ " x 5 $\frac{1}{4}$ ".
719. 19thC. Japanese School. Study of irises, pencil, watercolours, signed with characters and seal bottom right, 18" x 5 $\frac{1}{2}$ ".
720. Japanese School. Birds in landscape, 3 images, watercolour, seal signature, 13 $\frac{1}{2}$ " x 10 $\frac{1}{2}$ ", another, 4 images, straw, 19 $\frac{1}{2}$ " x 7 $\frac{1}{2}$ ".
721. Rose Jebb (20thC). 'The Manor House', Claxby St Andrew, Alford 1936', watercolour, details verso, 11" x 14 $\frac{1}{2}$ ", (unframed).
722. Harta (Felix Albrecht?)(1884-1967). 'Susan Rawmsley', head and shoulders portrait, pencil, crayon, signed and dated 1946, 20" x 15", another, 'Mrs Rawmsley', portrait with dog, inscribed, signed and dated 1946, 19 $\frac{1}{4}$ " x 13 $\frac{1}{2}$ " (unframed). (2)

723. George Oakley Lucas (after). Plan of the Borough of St Mary le Bone comprising Parishes of Paddington, St Mary-le-Bone and St Pancras, 1864, in 4 parts, each 23" x 23" approx, signed in ink 'G O Lucas, 6 Hawley Road West, Camden Town', and a plan London & Westminster in the Reign of Queen Elizabeth Anno Dom 1563, 23" x 31", early 20thC, etc.
724. A large quantity of 19thC hand coloured fashion plates, from The Queen and Mode Illustre and others.
725. William Powel Frith (after). 'The Road to Ruin', set of 5, steel engravings by Flameny, pub by Ant Union c.1882, plate size 17¹/₄" x 20¹/₂", unframed.
726. A qty late 19thC steel engravings, religion and genre, unframed.
727. Christopher Saxton (after). 'Lancastriae', map of Lancashire, by Hole, black and white double sheet engraving, c.1610. 12¹/₂" x 13".
728. Pigot (pub). Map of Westmorland, hand coloured outlines and borders, vignette of Kendal Church, 19thC, 10" x 15".
729. An oriental silkwork panel, worked in coloured threads with butterflies and flowers within a tulip border, 10" x 2¹/₂".
730. Thomas Moule (after). Map of Westmorland, hand coloured, vignettes of Brougham Hall and Appleby Castle, and Crests, 1st edition, c.1836. 8¹/₄" x 10¹/₂".
731. George Baxter. A set of 10 needlebox prints, 19thC black/gilt glass, 5³/₄" x 7", and T Allam (after) - Milnthorpe Sands, Westmorland, black and white steel engraving, 4³/₄ x 7¹/₄". (2)
732. Stannard (19th century). Cottages and garden on village streets, a pair, watercolours, bears signature, 7" x 10³/₄".
733. After Harry Payne - Heroes of the Victoria Cross, set of 12 reproduction colour prints, 6" x 9" together with framed cover, orig. pub. 1887 by The Kensington Fine Art Society, reprinted 1975.
734. Three early 20thC sepia prints - Head and shoulder studies of females, 7¹/₄" x 6", ornate gilt frames.
735. A collection of facsimile coloured prints of famous works, framed, each 6¹/₂" x 4³/₄".
736. A 19thC oil on oak panel depicting the birth of Christ.
737. * Cowderoy (19th century), Study of a Nubian warrior at the temple door, watercolour, signed and dated '97, 9¹/₄" x 6¹/₂".
738. Printed ephemera, sundry engravings etc.
739. A Fowler 1966. Windmill and cottages by a village pond, oil on paper, signed and dated bottom right 11" x 15".
740. G. Smith 1973. Surreal study of a baboon, mixed media on board, signed and dated bottom left, 24" x 17¹/₂".
741. After John S Sargent - Girls and lanterns in country garden, reproduction colour print, 23³/₄" x 20¹/₂".
742. Arthur Spencer (19th/20thC). Figures on a village street with thatched cottages and trees, watercolour, signed bottom right 6³/₄" x 11".
743. 19thC School. Spanish castle ruins with conversing soldiers in the courtyard, watercolour over pencil, unsigned 9¹/₄" x 13¹/₂".
744. Michael Crawley (19th/20thC) "Ashbourne Show" watercolour, signed bottom right, 11¹/₂" x 10".
745. 20thC School. "IT" While Father Works", pen, ink and watercolour, cartoon sketch, signed with monogram 13" x 8".
746. 19th/20thC School. "Raglan Castle" watercolour, signed with monogram, 14" x 9".
747. Ch..... Sneath (?) (20thC) Low Tide, Cornish coastal scene watercolour, indistinctly signed 10" x 13¹/₂".
- 747A. 19th/20thC School. Extensive panorama of cottage by a lake, wooded banks of mountains beyond, oil on card, partly signed "Bec" 18¹/₄" x 56¹/₂".
- 19th/20thC School. Extensive panorama of cottage by a lake, wooded banks of mountains beyond, oil on card, partly signed "Bec" 18¹/₄" x 56¹/₂".





Lot No. 732

747B. A gilt framed red damask panel embellished with two 18thC petit point pockets and two embroidered panels.

747C. 19thC Head and shoulder portrait of a bearded gentleman, litho, another colour print of a lady.

747D. 19thC School. Autumn landscape, watercolour, unsigned 4 $\frac{1}{2}$ " x 6 $\frac{1}{2}$ ".

747E. After Bessie Pease Cutman. "Awakening" and "A Little Bit of Heaven", coloured lithographs, early 20thC 14" x 19".

747F. 19thC School - The Buttercross "Spilsby, Lincolnshire", and "Somersby Rectory, Lincolnshire", a pair, watercolours, unsigned 4" x 5 $\frac{3}{4}$ " (unframed).

747G. Portrait oil on canvas (laid to board) of a young musician signed GMcathie 1886 15" x 11".

Books

748. Two copies of The Pears Edition of Charles Dickens Christmas Books, ill. by Charles Green, and four other children's books.

749. Assorted children's books and others.

750. Three boxes of assorted books.

751. Lang (Andrew). Red Fairy Book, London 1950, orig cl bds & dw, and 2 other children's books.

752. Wilson (John). The Recreations of Christopher North, Edin & London 1842, 3 vols, orig cl bds gt decor, and Bannister (J T). A Survey of the Holy Land, Bath & London 1844, ill. pls and maps, orig cl bds, gt decor, spine damaged. (4)

753. Carrel (Armand). History of the Counter-Revolution in England, London 1846, re-bound, and Galt (James). The Last of the Lairds, Edin and London, 1826, re-bound, and 6 other volumes. (8)

754. Seigne (Marie Rabutin-Chantal). Recueil Des Lettres a Madame la Comtesse de Grignan Sa Fille, Nouvelle Edition, Paris 1803, 12 vols in 6, mble bds, 3/4 cf gt, lightly stained, some wear.

755. The Panoplist and Missionary Magazine, Boston 1816, vol 12, stained, re-bound, and Fenelon (Francis). Part of the Spiritual Works, translated from French, Warrington 1825, 1 vol, re-bound, and a religious scrap book for 1846. (3)

756. Dodsley (Robert). Trifles, London 1745, 1 vol, re-bound, and Campbell (Thomas). The Pleasures of Hope, London 1815, 1 vol, orig bds, spine damaged. (2)

757. Stanford (Edward). Map of China and Japan, London, n.d. early 20thC, 36 folded parts on canvas, cl bds.

758. Bone (Muirhead). Came to Oxford, 1952, 31 ill. pls, cl bds, sm split to spine.

759. A qty of 18th/19thC leather bindings.

760. Zempel (E N) and Verkler (L A). Book Prices : Used and Rare, 4 vols, 1996-1998.

760A. Mixed books.

760B. Mixed books.

760C. Mixed books.

761. Hamilton (Anthony), called Count. Memoirs of Count Grammont, London n.d., new translation, 76 eng pls, cont str-grd, mor gt, spine faded.

762. Bertarelli (L V). Guida D'Italia Del Touring Club Italiano, Milain 1920, 15 vols, cl bds gt, and other Italian guides, and a qty of cycling guides, early 20thC.

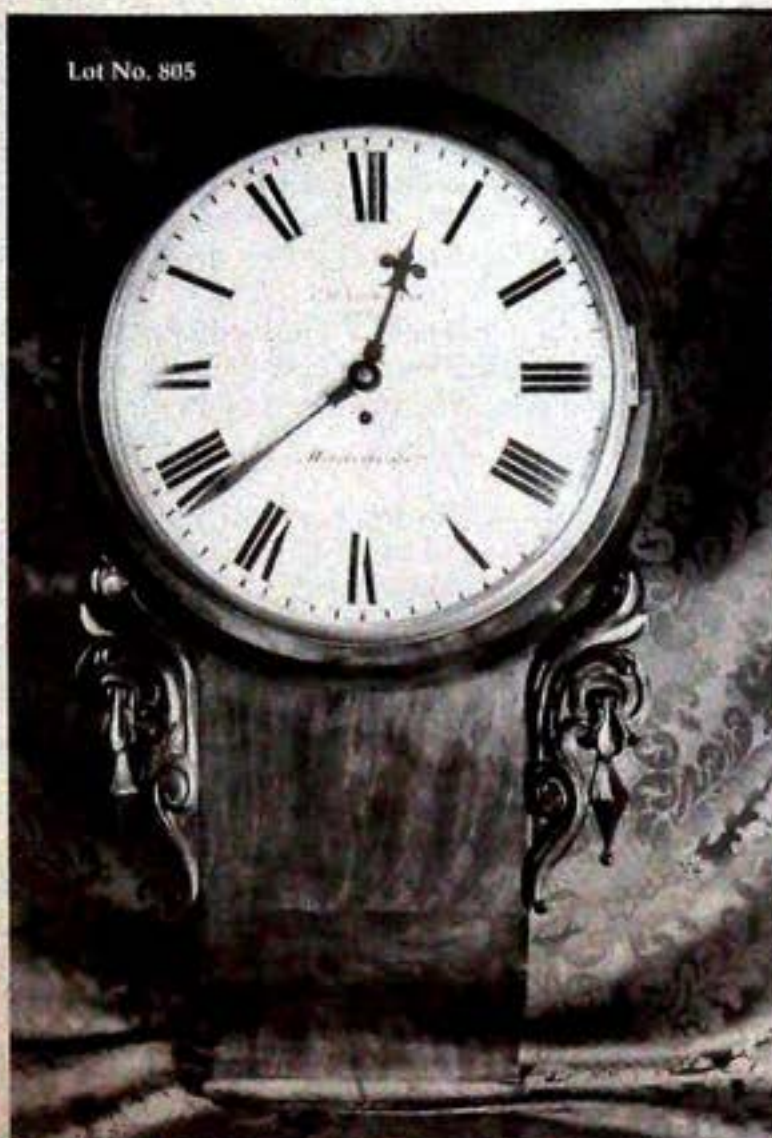
763. A qty of sundry books, mainly German.

764. Collier (Jeremy). The Great Historical Dictionary, London 1688, vol 1, 2nd Edition, cf raised spine bands, and other sundry vols.

765. Sarpi (Paolo). Histoire Du Concile De Trente, Amsterdam, 1736, vol 2, lightly browned, cf gt sp spine, damaged, and DeFolard. Supplement A L'Histoire De Polybe, Amsterdam, 1753, cf gt spine, damaged. (2)

766. The Art Union Monthly Journal of the Arts, 1848, vol X, steel eng plts, marble bds, $\frac{3}{4}$ calf, gt, and The Saturday Magazine, vol 1 and vol 24, 1832 and 1844, marble bds, $\frac{3}{4}$ cf gt. (3)
767. Payne (Albert Henry). Royal Dresden Gallery, Leipzig and Dresden, London, c.1850, 2 vols, steel eng plts, red cl bds, richly gilt, spines worn.
768. Smith (Charles) Cartographer. New General Atlas, 1826, 45 engraved maps, hand-col, some double page or folding, half cf mble, boards, spine and boards damaged, some maps torn and stained.
769. Baker (Sammuel White, Sir). The Albert N'yanza, Great Basin of the Nile and Explorations of the Nile Sources, London 1866, 1st edn, 2 vols. Vol 1 engrd port frontis. Vol 2, litho frontis, 2 maps, 1 folding (torn), orig cl bds, gt decor.
770. A Collection of early 20thC postcards, approx 450, contained within an album, mainly topographical, Venice, Florence, Austria and Italian Alps, inc skiing, and another smaller album, later.
771. Briscoe (J Potter) Bypaths of Nottinghamshire History, London 1905, 41 ills cl bds gt, and Kipling (Rudyard) East of Suez, ills Donald Maxwell, London 1931, 24 ills inc 12 col plts, cl bds, gt.
772. The Field, The Fox Hunt and The Farm, London, n.d. ills F Grey, and Charlton (Moyra). Tally Ho, ills Lionel Edwards, London 1948, d.w. and May (Phil). Graphic Pictures, (part), 3vols.
773. Penley (Aaron). The English School of Painting in Water Colours, London n.d, 25 plts, chromoliths, $\frac{3}{4}$ cf, gt, c.1850.
774. Jones (Edward Alfred). Catalogue of Plate Belonging to the Duke of Portland, KG, GCVO, at Welbeck Abbey, London 1935, no 161 of 200, 21 plts, deckle edges, cl bds, gt.
- 774A. Ramsden (Charles). French Bookbinders 1789-1848. Printed for the Author by Lund Humphries & Co Ltd 1950. 1st Ed, 4to, frontis., 40 plates, orig. buckram, t.e.g.
775. British Museum. General Catalogue of Printed Books to 1955, compact edition, NY.1967, 27 vols, cl bds, and Supplement 1956-1965 5 vols x 2, Supplement 1966-1970 3 vols, and Supplement 1971-1975, 2 vols. (42 vols in all).
776. Murray (James), Bradley (Henry) and others, A New English Dictionary on Historical Principles, Oxford, c.1928, 12vols, $\frac{1}{2}$ calf, gilt.
777. A qty reference books including travel and art.
778. Crane (Walter). Flora's Feast, A Masque of Flowers, London, Paris, New York & Melbourne, 1889, orig paper covers, torn and stained, and Dulac (Edmund), Picture Book for the French Red Cross, London, New York, Toronto, N.d, orig cl boards, spine damaged, and 2 further children's books. (4)
779. Prinsep (Henry Thoby). Note on the Historical Results, deducible from Recent Discoveries in Afghanistan, 1884, 1st edn, 17 plts, 1 folding, 2 adv. orig cl.
780. Carroll (Lewis) Alice's Adventures in Wonderland and Through the Looking Glass, Ill Tennier London 1921, orig cl bds, gt decor, spine scuffed and faded, Barrie (J M) Peter & Wendy, London 1911, 5th ed, orig cl bds, gt decor, slight foxing, and Graham (Kenneth) The Wind in the Willows, Ill Arthur Rackham, London 1952, cl bds, dust jacket (torn).
781. Litchfield (Frederick). Pottery and Porcelain a Guide to Collectors, London 1925, 4th ed, orig crimson bds, with raised spine bands and gt lettering.
782. Somerville (E OE) and Ross (Martin). Some Experiences of an Irish MP. Ill E OE Somerville, London 1906, lightly foxed, orig cl.bds.
783. Browning (Robert). The Pied Piper of Hamelin, Ill Kate Greenaway, E Evans, London c.1888, orig paper-covered cl bds, spine torn and strained, and Greenaway (Kate) Painting Book, London n.d.
784. Coward (Noel) Middle East Diary London-Toronto 1944, 2nd ed, cl bds, dust jacket (torn), Milligan (Spike) Adolf Hitler My Part in His Downfall, London 1971, cl bds, and Huxley (Aldous). Leda, London 1920, orig cl bds, stained and paper title label rubbed. (3)
785. Carne (John). Syria, The Holy Land and Asia Minor. Ill after Bartlett and Purser N d, 6 parts, engraved plates, in paper covers. (AF)
786. An early 19thC hand written journal of the Grand Tour by Walter Stannard Halliday, commencing November 8th, 1814, marble boards, $\frac{1}{2}$ calf, 2 early 20thC hand-written recipe books, and an early 20thC recipe book '365 Entrees'. (4)
787. A qty of 18thC Musical Tutors for the harp, violin and piano, etc.
788. A small quantity of books.
789. Milne (Alan Alexander). When We Were Very Young - Now We Are Six, ill E H Shepard, London 1927, 2nd editions, orig cl gt, (end paper missing to Now We Are Six, spines scuffed).
790. Boys Annual, 1880-1881, half calf, gt spine.
791. The Naturalist's Pocket Magazine, or Compleat Cabinet of the Curiosities and Beauties of Nature, 1799-1800, 3 vols 1, 4 and 5, hand-cold plates, vol 5 lacks upper cover, hf cf marble bds, spine worn and torn.
792. Goldsmith (Oliver). A History of the Earth and Animated Nature, vol II, Edin & London, hand-cold plates, hf cf gt, some staining, spine scuffed.
793. Potter (Beatrix). The Tale of Peter Rabbit, London & New York, 27 cold ill, orig bds, with pict cover label, (pages loose).
794. Kingsley (Charles). The Water Babies, Ill A E Jackson, London, no date, orig cl gt.
795. An early 19thC album, containing pencil, ink and watercolour drawings of landscapes, birds and flowers, also hand written verse and text, in morocco boards with original gilt decor, scuffed.

Lot No. 805



Lot No. 806



796. An Edwardian photograph album, the gilt edge leaves printed with chromolithographic images of flowers, dark brown Moroc boards with stamped decoration and brass clasp, in original slip case.
797. Chesterton (G K). Famous Paintings, London 1912, 50 col plates, cloth boards, gilt decor, together with The Illustrated London News - Silver Jubilee 1910-1935 and 3 art reference books (AF), and a late 19thC chronolithograph of apple blossom, 9" x 6".
798. A scrap album, early 20thC, containing a number of Louis Wain reproduction illustrations, etc.
799. Aesop - The Fables, ed not known, 18th century, 1 vol, engraved copper plates, boards missing, torn and stained.
800. Paton (R) and Alexander (S G B) - Antique Pistols, London 1963, 12 col ills, paper boards, gilt and col decor (some loose pages).

Clocks & Barometers

801. An early 20thC mahogany cased aneroid barometer, with circular dial and thermometer, the shaped case inlaid with stylised plant forms in the Art Nouveau manner, 25" high.
802. An Edwardian oak cased aneroid barometer, with circular enamelled dial and thermometer, the banjo shaped case carved with floral pediment, leaf forms and roundels, 34 1/2" high.
803. A 19thC rosewood 5 dial wheel barometer, with hygrometer, thermometer, convex mirror, silvered dial and spirit level, c.1850 37" high.
804. A Victorian mahogany cased wall clock, having a circular enamel dial with Roman numerals, within a brass bezel, the encircling frame applied with trailing flowers and leaves, with vine and berry brackets, having a timepiece movement 34" high.

805. A Victorian walnut cased wall clock having a circular enamel dial, inscribed T. Hammond, Manchester, single fusee movement, in a plain case with scroll and foliate brackets, 32" high.
806. A 19thC French mantel clock by Vincent et Cie, of rococo design, the green wooden case painted with flowers and with gilt metal mounts, the circular enamel dial having Roman and Arabic numerals and inscribed Ch Dubret, the two-train movement striking the hours and half-hour on a bell, 14 1/2" high.
807. A 19thC mahogany stick barometer with two part brass dial, marked Polti Exon 35" high.
808. A mid 19thC American rosewood cased shelf clock with painted dial and panel (AF).
809. A late 19thC American rosewood cased drop-dial wall clock, with painted dial marked Seth Thomas USA 23" high.
810. A 19thC German wall clock with 8 day movement and part painted case, 28" high.
- 810A. An oak mantel clock with beaded and barleytwist decoration, 8 day movement, striking a gong 11" high.
- 810B. A Victorian painted slate mantel clock with enamel two-part dial and stepped base 12" high.
811. A 19thC German wall clock with two part enamel dial and 8 day movement 27".
812. A 19thC German walnut wall clock with two part enamel dial and 8 day movement 30".
813. A 19thC German walnut wall clock with two part enamel dial and 8 day movement, 30".
814. A 19thC German wall clock with part ebonised decoration and 8 day movement. 46".

815. A late 19thC German walnut wall clock with brass dial with enamel chapter ring and 8 day movement 32".
816. A 19thC walnut cased Junghans wall clock (AF).
817. An early 20thC walnut cased grandmother clock, having a brass dial with silvered chapter ring and Roman numerals, brass spandrels and engraved centre, of 8-day chiming movement, the hood with dentil and cavetto cornice above blind fret frieze, turned pilasters, the rectangular door with 2 inset panels and blind fret panel, on bracket feet.
818. A late 20thC longcase clock with three train movement, 6'2" high.
819. An early 18thC longcase clock, the green lacquer case having chinoiserie decoration throughout, the 12" brass square arch dial having cast applied spandrels, silvered silent/strike bezel to arch with a floral engraved centre, the silvered chapter ring having matted centre and subsidiary seconds dial and date aperture, maker NICHOLAS PREVOST, London, 8-day movement striking on a bell, 7'3" high.
820. A 19thC oak and mahogany longcase clock with boxwood stringing, having a painted dial with Arabic numerals, bud spandrels and cottage landscape in arch, inscribed Ww Roberts Derby, of 30 hour movement, the hood with swan neck pediment, brass roundels, and turned pilasters, shaped trunk door and on bracket foot, 85" high.
821. A 19thC oak, mahogany and burr elm longcase clock, the square painted dial with Roman numerals and foliate spandrels, inscribed John King, Loughborough, with calendar aperture, 30 hour movement, the hood with swan neck pediment, centre cast brass finial, turned pilasters, shaped trunk door flanked by canted corners, and on a deep plinth with fielded panel and bracket foot 85" high.



822. A George III oak and mahogany longcase clock with swan neck pillared hood having ball and eagle finials, cross-banded and trunked front door, and similar panelled base raised on bracket feet, the painted 12" square dial having birds to spandrels, Roman numerals, seconds ring and date crescent marked Careswell Becket Salop, 83" high.
823. A 19thC oak and mahogany cross-banded longcase clock with swan neck pillared hood, cross-banded trunk door and base raised on bracketed plinth, the painted 12" dial with Roman numerals marked Houghton Uppingham 83" high.
824. A 19thC French ormolu figural mantel clock with a young lady with full length dress and bonnet standing over a 3" enamel dial and cast acanthus lappet base with scrolling apron and feet, the 8-day movement striking a bell 17" high.
825. An Edwardian string inlaid mahogany Napoleon's hat mantel clock with chiming 8-day movement, 18" wide, 10" high.
826. A beaded oak table clock raised on four barleytwist supports 9".
827. A Louis XV style walnut and ormalu mounted rococo mantel clock with enamel dial and integral shaped plinth 9" high.
828. A Smith's brass 3 1/2" panel clock in later mantel mount.
829. Two Victorian alabaster and brass mantel clocks.
830. A Victorian mantel time piece with polished slate and marble inset case and enamel dial.
831. Three Art Deco chiming mantel clocks.
832. A French brass carriage time piece and another.
833. A German chrome bezelled day dial calendar in later case, 5" dial.
834. An Edwardian mahogany balloon mantel clock with 8 day movement, striking a gong.
835. A mahogany cased mantel clock with presentation inscription and Victorian polished slate example.
836. A beaded oak cased mantel clock with 8 day movement 12".
837. A French oak cased wall clock with brushed aluminium dial marked ODO 14" square.
838. An Edwardian oak mantel clock with 8 day movement striking both gong and bell 13".
839. A Victorian mantel clock in later stained beech case 13" high and a Kundo dome anniversary clock.
840. A 19thC French gilt metal figural mantel clock with a Dandy standing by a 3" enamel dial, with 8 day movement, 13" high, together with dome (AF) and plinth.
841. A German anniversary dome clock.
842. An Edwardian mahogany balloon time piece with shell inlaid waist and stringed decoration, enamel dial 9" high and another.

843. An Edwardian brass and marble column nursery night light time piece, the glass globe having Roman numerals, 9 1/2" high.
844. A gilt-brass clock garniture, heavily cast with strapwork, masks, shells, the circular dial with Roman numeral reserves, of 8-day chiming movement, together with a pair of 4-branch candelabra. 24 1/2" x 27" respectively.
845. Two School clocks (AF).
846. A Victorian mahogany School Clock (AF).
847. Three wall clocks inc modern example by C Wood & Son.
848. Three boxes of various clocks and parts, all 20th Century.
849. Three boxes of various clocks and parts, all 20th Century.
850. Three boxes of various clocks and parts, all 20th Century.
- 850A. A 19thC. German wall clock in stained wood case, with enamel 2-piece dial with Roman numerals, of 30-day striking movement. 24" high. A 19thC. German wall clock in stained wood case, with enamel 2-piece dial with Roman numerals, of 30-day striking movement. 24" high.

Antique Collectables

851. A 19thC Wedgwood drabware game pie dish, oval, moulded in relief with hung game and fruiting vine, the cover with rabbit knob and having an inner pottery liner, 10" wide, impressed Wedgwood.
852. A Chinese blanc de chine figure of a Chinese Immortal, probably Ts'ao kuo-ch'in, seated on a rock, 7 3/4" high.
853. A German porcelain figure of an 18thC youth, dressed in flower sprigged frock coat and breeches holding a flute, on a flower encrusted scroll moulded base, late 19thC. 8 1/2" high.
854. A Wedgwood pottery soup tureen and cover, printed in blue with landscapes within rose and leaf border, the domed cover having a foliate finial, 13 1/2" wide, impressed Wedgwood and date letter for 1883.
855. A pair of Wedgwood pottery side dishes, of oval shape with integral handles to the sides, printed in blue with village landscapes within rose and leaf borders, 9" wide, impressed Wedgwood and date letters for 1883.
856. A cut glass sherry decanter, of baluster shape, with knotch cut neck over a diamond cut body, faceted stopper, and star cutting to base, 12 1/2" high (+ contents!)
857. A silver plated 5-piece tea service, of lobed outline, heavily decorated with flowers and foliage, acanthus and harbell mounted scroll handles, and on raised rococo feet, comprising teapot, hot water jug, cream jug, covered sugar bowl and open sugar bowl.
858. A large EPNS 2-handled tea tray, en-suite with preceding lot, engraved with shell, floral and foliate ground, cast rim and handles, 29 1/2" wide.
859. A Bohemian glass wine goblet, the funnel bowl with blue panels dissected by engraved gilt flower sprays, faceted knob and panelled stem, on a circular foot with engraved gilt flower border, 8 1/2" high.
860. A pair of Royal Crown Derby 'Old Imari', 2-handled vases of ovoid shape, heavily gilded and painted in underglaze blue, iron red and green, 10 3/4" high, pattern no 1128, modern.
861. A pair of Royal Crown Derby 'Old Imari' candlesticks, the fluted fixed sconces on circular tapering columns and square incurving bases, moulded with dolphins, heavily gilded and painted in underglaze blue, iron red and green, 10 3/4" high, pattern no 1128, modern.
862. A porcelain mug, printed in iron-red, to commemorate the accession and Coronation of King Edward VII, 1901/2, 3" high.
863. Three early 20thC lady's umbrellas, with decorative white metal handles, a silver topped cane, a silver mounted walking stick and one other (AF). (6)
864. A mahogany framed wall mirror, 19thC, the rectangular plate in a cavetto moulded frame with scroll pediment, 11" x 6 3/4".
865. A 19thC copper ale funnel, with ring handle, 12 1/2" high.
866. An EPNS flambe stand and burner by Walker & Hall, oval, having a pierced band to the body, the separate burner with 2 carrying handles, 6 1/2" high.
867. An 18thC burr walnut table top, circular, with a moulded rim, 17 1/2" dia.
868. A baluster cut glass claret jug with engraved silver mount and hinged cover, Birmingham 1896, with loop handle, the body with star, diamond and hobnail cut panels, star cut to base, 8 1/4" high.
869. A pair of Sitzendorf porcelain 4-light candelabrum, late 19thC, the 3 downswept branches of each with applied flowers and foliage and with acanthus sconces, separately mounted on a base modelled as a mother and child, dressed in classical robe and seated on a shell shape chair, the serpentine square base with applied flowers and foliage, 19" high, underglaze blue mark to base.
870. A Meissen porcelain clock, 19thC, the enamel dial with Arabic numerals, swagged flowers to the centre, enclosed within a gilt metal egg and dart bezel, of 8-day movement, chiming on a gong, the backplate stamped 'Vincente', surmounted by 2 doves, cartouche and floral encrustations, rosette and laurel swag faux handles flanking the dial, the whole resting on a corinthian column applied with bow, quiver and floral swags and flanked by a young woman and cherub, the shaped base raised on acanthus scroll feet and with conforming ornament, 18" high, underglaze blue cross swords to base, (hairline crack to base).

871. An early 20thC table tennis set including 2 parchment bats and net, in original box.
872. A glass dish, early 20thC internally painted with 18thC dancing figures, within scroll border and floral swags, 9" dia.
873. A pottery meat dish, 19thC, printed in blue with classical vignettes, on a floral ground, 12 1/2" wide.
874. A late 18thC tea bowl, printed in blue and painted in pink and green with flowers, 3" dia, (rim chip); together with a Chinese blue and white tea bowl, with wavy edge printed in blue with simple plant forms, 4" dia.
875. A cast brass 2-section letter rack, cast in the Art Nouveau manner, with figural and foliate dividers, on rectangular platform base, on scroll feet, 6 1/2" high.
876. A set of 3 gilt metal scissors, of graduated size, the handles cast as flamingoes, in original case. (AF)
877. An EPNS circular tray, the rim cast with flowers, acanthus and scrolls, on 3 conforming feet, 15 1/2" dia.
878. An Enoch Wood type pottery figure, of Andromache, her arms encircling an urn, on pedestal, square moulded base, 9 1/2" high.
879. A pair of Thuraigian porcelain figures, modelled as a female musician, holding a harp, the other, a sculptress, with male bust, both on moulded bases, 6 3/4" high.
880. A nephrite 'Tang' horse, carved with ornate saddle cloth and braids, on wooden base, 20thC, 6 1/2" wide.
881. A porcelain eau de cologne bottle, of rectangular form with incurving corners and domed stopper, painted with flowers and gilt, early 20thC, 6 1/2" high.
882. An ivory okimono, carved as an elderly Chinese man, holding a swag of fruit and staff, 9" high, (AF), on wooden base.
883. Chinese ivory concentric balls, the interior balls pierced with stars, the outer pierced and carved with serpents and scrolls. (AF)
884. A spelter dish, modelled in relief as a heavenly musician serenading frogs on a lily pad, 10" wide.
885. A white metal small platter, cast in low relief with frog archers, with blossom, 4 3/4" wide.
886. An 18thC Chinese export circular teapot, with entwined strap handles, foliate terminals, the flat cover with fruit and leaf finial, decorated in underglaze blue with fishermen pattern, gilt with foliate swags and bows, together with a stand.
887. A late 18thC creamware teapot, circular, the domed cover with baluster finial, loop handle and leaf moulded spout, painted with roses, berries and foliage.
888. A rare Copeland majolica figure of a wild boar, in naturalistic glazes, standing on a rectangular leaf moulded base, impressed COPELAND. 3 1/4" high, 4 3/4" wide.
889. A Royal Doulton figure 'Sharon', HN3603, by Nada and Pooley, 9" high.
890. A Meissen porcelain tea pot, painted with insects and encrusted with Deutsche Blumen, the double scroll handle and spout moulded and gilt with acanthus, underglaze blue factory mark, late 19thC, 4" high, (chip to rose finial).
891. A late 19thC German porcelain candlestick, modelled as a tree trunk, with a young boy, standing, a bird in his hand, a caged bird at his feet, on moulded base 8" high.
892. A novelty glazed bisque cruet set, modelled as 3 clowns, another as Humpty Dumpty, both early 20thC.
893. A 19thC copper lustre mug, with scroll handle, painted with flowers, 2 3/4" high.
894. A terracotta plate, painted in blue with bird, flower and plant forms, 8" dia, (rim chips).
895. A pottery whiskey barrel, decorated with rural landscapes, allorgorical of the seasons, birds, flowers and wildlife, signed Monika Heller-Cole, 12" high.
896. A Beswick 9-piece 'pig' orchestra, comprising conductor, trombonist, violinist, guitarist, trumpeter, flute player, drums, triangle and cymbals, 4" to 6" high, black backstamp.



897. A German porcelain figure of a monkey violinist, in 18thC costume, on rococo base, 5 $\frac{1}{2}$ " high.
898. A gilt metal travelling barometer/compass signed Negretti & Zambra, London, no 1049, with engraved silvered dial, the reverse, centrally set with an abalone and painted compass within an encircling thermometer, in fitted 2-sided leather box, 2" dia.
899. A pair of famille rose plates, 19thC, enamelled with peonies and bamboo, issuing from rocks and a basket, within floral border with tri-lobed pendants, 9" dia, one with hairline cracks, together with a Chinese export plate, painted in blue, centrally with floral spray within pendant border and honeycomb rim, 9 $\frac{1}{4}$ " dia, an Imari plate, centrally painted in iron red and blue with a table, ferns in vase and other items within honeycomb well with kite panels, the border with simple plant forms, gilt highlights, 9" dia. (4)
900. A Delft plate, painted in blue with peonies and foliage, yellow rim, 9" dia, signed on reverse, together with an Ashworth type ironstone plate, polychrome painted with a Chinese landscape and flowers, 8 $\frac{1}{2}$ " dia. (2)
901. A small collection of Edwardian lace collars and cuffs, together with an embroidered organza blouse.
902. A wooden walking stick with a handle carved as a bulldog's head, with resin set eyes.
903. A green-grey jade carving of a Chinese immortal, 5 $\frac{1}{2}$ " high. (AF)
904. A Minton porcelain dessert service, centrally painted with a rose spray, within a gilt foliate scroll and blue double line well, the borders painted and gilt with entwined rings linked by ribbons and rose swags, within a gilt dentil rim, pattern no 7642, circa 19th, comprising 8 plates and 4 comports in 3 heights.
905. A German silver rectangular framed mirror, 11" x 18 $\frac{3}{4}$ ".
906. A pair of cut glass square decanters, cut with a band of wheat ears over diamond cut body, faceted stoppers, 10" high, together with a set of 12 whiskey tumblers, with panelled bodies and flower moulded bases.
907. A Victorian cast iron doorstep, modelled as a stylised bird, possibly a crane, amongst foliage, oval base, 16" high.
908. An ivory carving of a Buddah, seated on lotus, 3 $\frac{1}{2}$ " high.
909. An early 19thC oak salt box, with shaped back, sloping cover fitted with pierced brass hinges, over frieze drawer, 17" high, 14" wide.
910. A Vienna porcelain plate, painted with a classical scene 'Diana and Pan' within a palmette and laurel gilt well, the border with crimson reserves on a pink ground enriched with gilt ornament, underglaze blue beehive mark and title to underside, 9 $\frac{1}{2}$ " diameter.
911. A set of six German porcelain dinner plates, the crimson ground gilt with cartouche, flowers and foliage, 10 $\frac{3}{4}$ " diameter, 20th century.
912. A Shelley coffee service of irregular octagonal form, "Queen Anne shape" painted in black and enamelled with orange flowers, pattern no. 11497.
913. A pair of 19thC Staffordshire pottery meat dishes, of rounded rectangular form, printed in blue with the "Willow Pattern", 18 $\frac{1}{2}$ " wide, another, 15 $\frac{3}{4}$ " wide, another with gravy channels, 22" wide, impressed 20 on underside, together with another "Country Landscape" meat plate 16" (with faults). (5)
914. A glass dome.
915. A green glass campana shaped two-handled vase, with lobed lower body and on domed foot 10" high.
916. A 19thC glass rummer, the circular slightly flared bowl with oval moulded panels, on knopped faceted stem and circular foot, 7" high.
917. An early 19thC horn beaker, of circular tapering form, white metal bound rim and shield inscribed "Christopher" 5 $\frac{1}{2}$ " high.
918. A late 19th/early 20thC cranberry glass jug, ovoid, with dimpled body enamelled in white with a young girl in a landscape in the style of Mary Gregory, clear glass loop handle, 6 $\frac{1}{4}$ " high.
919. A late 19thC bisque figure group of a young girl seated on a tree stump, feeding a lamb from her basket of fruit, on circular base, bears registration Siana's v makers name, 8" high.
920. A 19thC Staffordshire pottery meat strainer, of rounded rectangular shape, painted in blue with Chinoiserie vignettes 14 $\frac{3}{4}$ " wide.
921. Five Copeland & Garrett dessert plates, of circular outline with shaped rim, with central gilt floral medallion, within a continuous border of pink roses, having pink border within gilt lines, c.1840, pattern no B500, 9" dia.
922. An early 20thC plaster bust of a young boy 'Pecher', looking left, in a knitted tasselled hat, with fish by his right shoulder, stamped 56.B to the back, 9 $\frac{1}{2}$ " high.
923. A Staffordshire pottery figure group spill 'Babes in the Wood', predominately white, with underglaze blue, pink and green, applied bocage and birds, shaped base with gilt line, 6" high.
924. A Victorian Staffordshire pottery group, modelled as 2 theatrical figures in a boat modelled as a horse, glazed in underglaze blue, iron red and green, oval base with gilt line, 9 $\frac{1}{4}$ " high, (cracked).
925. A pair of Victorian Staffordshire pottery greyhounds, each standing against a tree trunk and holding a dead hare in its mouth, iron red bodies and applied bocage to an oval base, 11" high, c.1870.
926. A pottery 'Patriotic Jug' by Samuel Alcock, of baluster outline, printed in black with a Crimean battle scene and opposing image of a grieving family, within moulded and painted borders, acanthus moulded spout and mask handle, c.1855, 8 $\frac{1}{4}$ " high.

927. A Derby porcelain pen tray, of elongated leaf form, painted with a spray of roses, other flowers and butterfly, the white and green spout with gilt highlights, 12" wide, faint factory mark to underside, c.1840.
928. A Wemyss pottery vase, of circular waisted outline, painted with cherry branches, 4 1/2" high, together with a Wemyss small jug, painted with 2 cockerals in grass, inscribed Bon Jour, painted mark for T Goode & Co, 2 1/2" high (cracked, chip and some staining) and a pink pottery inkwell.
929. A Dudson lilac jasperware tobacco jar and cover, moulded with classical figures, musical instruments and trees, the domed cover and foot with acanthus leaf and foliage, 6 1/2" high, c.1880.
930. A late 19thC Longivy tile painted in blue with a deer in a lakeland landscape, French, circa 1880, 8" square.
931. An Arts & Crafts earthenware green glazed bowl, of trefoil outline, each cusp moulded externally with an owl mask, 6 1/2" wide, together with a green slip glaze earthenware teapot.
932. A pair of Jones and Walley ironstone plates, printed and polychrome painted with flowers in the Chinese manner, pattern no 80, c.1840, 10 1/2" dia.
933. A pair of 19thC opaque glass vases, of ovoid outline, having slightly everted rims, having vertical pink gilt bordered panels divided by a band of lilies on circular spreading bases, 10 1/2" high.
934. A Victorian Staffordshire pottery figure group 'Harvest Celebration', in underglaze blue and polychrome colours, with a pipe player seated on a barrel, flanked by male and female figures holding wheatsheaves, oval base with gilt line, 8 1/4" high.
935. A Royal Crown Derby 2-handled vase, of circular tapering outline, painted with C-scrolls in green and gilt, trailing roses between pale green gilt lined borders, gilt acanthus handles to each side, date code for 1900, pattern no 1267, 4" high.
936. A Victorian Staffordshire pottery model of a zebra, on a green and brown moulded base, 5" wide, c.1870.
937. A Victorian Staffordshire pottery figure of a hunter astride a horse with leopard in the undergrowth, underglaze blue and polychrome glazes, on an oval base with gilt line, 11" high.
938. A Victorian Staffordshire pottery figure of a grandly dressed lady holding a lamb, underglaze blue and polychrome glazes, on a circular base with gilt line, 8 1/2" high.
939. A Victorian Staffordshire pottery figure of a musician, holding a flute, with seated dog at his side, underglaze blue and polychrome glaze, on a circular base with gilt line, 8 3/4" high.
940. A Victorian Staffordshire pottery figure of a mournful spaniel, seated, with freestanding front leg, sponged in iron red with gilt collar and chain, 7" high.
941. A Victorian Staffordshire pottery figure of a spaniel, seated, with iron red splashes, gilt collar and black chain, 8 1/2" high.
942. A Prattware comport, printed in colours with a vulture and snake in a lakeland landscape, within blue border, 9 1/4" dia. (AF)
943. A Victorian Staffordshire pottery figure of Dick Turpin, in beaver hat, cloak, long coat and waistcoat, seated on Black Bess, one front leg raised, oval base, gilt line, 9" high.
944. A Newhall silver shape teapot, polychrome painted with diaper borders, wavy line and rose, c.1770, pattern no 173.
945. A pair of Parian figures of a Shepherd and Shepherdess, in 18thC costume and with sheep and dog recumbant at their feet, on circular bases, 19thC, 9" high. (one AF)
946. Three Lambeth Doulton egg cups, of campagna shape, the buff ground enamelled with dentil and alternating flowerheads, over foliate border and bead knopped stem, 2 3/4" high, c.1880.
947. A Royal Crown Derby plate, decorated in Old Imari pattern, in typical palette, heavily gilt, date code for 1932, 9" dia, together with a saucer, pattern no 2451, date code for 1929.

28, 940, 923 & 924



Lot No. 944, 877, 890 & 886





948. A 'Nankin' achat, of irregular octagonal outline, painted in blue and white with flowers, screen and bench in a Chinese landscape, within diapered lozenge borders, 16 1/2" wide (rivetted).
949. A Mintons majolica model of a seated greyhound with tan body, on a rectangular blue/brown base with acanthus moulded walls, moulded mark, c.1890, 5 3/4" high.
950. A Victorian Staffordshire pottery spill vase, modelled as 2 swans with tree trunk and bocage, on shaped oval base with gilt line, 5" high.
951. A Victorian Staffordshire pottery spill vase, modelled as 2 swans before a tree trunk, on oval base with gilt line, 6 3/4" high.
952. An early 19thC Staffordshire pearlware model 'The Game Bag', as a tree trunk hung with dead game and cartridge bag, 7 1/2" high.
953. A Prattware type plate, the well printed in colours with a kingfisher in river landscape, within marble border with 'jewelled' rim, probably by Meyers, 9" dia, c.1870.
954. An amethyst glass bud vase, enamelled in the Mary Gregory manner with young girl in a landscape and simple flower forms, 7" high, together with an amethyst frosted pressed glass candlestick and a pink milk glass cup and saucer.
955. A Chinese famille rose brush pot, enamelled with figures in a landscape, 4 1/2", together with famille rose ginger jar, enamelled with figures in a landscape, Qian Long, 3 1/2"
956. A Continental porcelain figure of a seated musician, in 18thC costume, 4 1/4" high, together with a porcelain figure of a young harlequin with cymbols, 4 1/2" high, 20thC.
957. A Chinese famille rose footed dish, of quatre lobe outline with shaped rim, centrally painted with figures in a landscape, the borders with butterflies and flowers, 11" dia (repaired).
958. A cloisonne shouldered vase, the elongated neck, decorated with dragons on a blue ground, below multi floral borders, early 20thC, 12 3/4" high, (AF), another, enamelled with flowering branches on blue ground, 6 1/4" high.

959. A blue jasperware pot pourri vase and cover by Henry Steel, with grey ground intaglio panels, moulded with classical figures, the body with acanthus scrolls, early 19thC, 6 1/2" high (damaged), together with a Wedgwood pink jasperware heart shaped trinket dish, moulded with classical figures within an oak leaf border, 4 1/2".
960. An orange ground carnival glass bowl, with a deep wavy well, centrally moulded with daisy amidst leafage, 9 1/2" dia.
961. An amber glass shouldered vase, of circular tapering outline, internally decorated with white splashes, 8" high, together with a small rainbow vase with frill fan shaped neck and applied print foot, 5 3/4" high.
962. A blue glass jug with green splash decoration, 3 1/2" high, a clear blue glass jug, with reeded handle, 4 1/4" high, a green and white 'cobweb' vase, 4 1/2" high and a blue glass patch stand with clear twist glass stem, 4 1/4" high. (4)
963. A large Chinese blue and white ginger jar with Kangxi marks.
964. A Majolica tile by Charles Wain, c.1891, modelled in relief with cavorting children and goat, 4" x 6".
965. A 19thC Japanese Imari plate, with scalloped rim, polychrome and gilt with radiating panels of trellis, checks and flowers, 8 1/2" diameter.
966. A Meigh blue and white small meat plate, printed with Italian scenery pattern, 10 3/4" high, early 19thC.
967. A Samuel Alcock model of a playful poodle, on a pale yellow moulded base with gilt line, c.1830, 3 1/4" wide.
968. A Derby model of a ram, standing on an oblong base, with gilt line, c.1840, 2 1/4" wide.
969. A Lloyd model of a female musician, in green coat, pink and yellow skirts, holding a mandolin in her right hand and seated on a rocky outcrop, circular base with gilt line, 19thC, 4 1/4" high.
970. A Martin Brothers flask shape vase, with mottled blue ground, 4" high, incised marks to underside, 1910.
971. A Gouda pottery circular bowl and cover, painted with a view 'Witte Huis, Rotterdam', 5" dia and 2 further pieces of Dutch pottery. (3)
972. A 19thC walnut caddy of rectangular outline, having a slightly domed cover fitted with a brass swing handle, and with interior lid, 6" wide.
973. An 18thC. Continental brass candlestick with removable sconce, on turned baluster knoped stem and high conical base, 11" high. (AF)
974. An Italian bronze head and shoulders bust of a Roman lady, with silvered eyes, on oblong plinth, 8" high.
975. A Staffordshire 'Pratt' type pearlware figure of a youth, in yellow frock coat and breeches, seated in a shell moulded chair, on shaped base, 8 3/4" high.

976. A Japanese bronze censor, cast with interior seal signature, and serpent handles, with hardwood pierced cover set with agate finial, 3 1/2" dia.
977. After the Antique. A bronze figure of a wild boar, 19thC. 7 1/2" long.
978. A set of 8 modern cut glass wine glasses, 5 custard glasses, a pair of green glass wine glasses with clear stem and foot and a 19thC comfiture.
979. A 17thC Spode cushion shape dish with transfer printed border.
980. A pottery cache pot, of circular bellied form, with lobed rim, moulded with shells, reeds and a wrythen flute girdle, painted with figural landscapes and flowers, inscribed to underside Jaques Borelly 1781, 10" high (repaired).
981. A late 19thC mahogany narrow tray with raised gallery, mounted with two brass handles, 28 1/2" x 5 3/4" (AF).
982. A Villeroy & Boch Mettlach plaque, of circular shape incised outline and polychrome painted with a Bavarian Woodsman/Warrior in a landscape, inscribed "Irutz ohn Macht wird verracht" 14 1/2" dia.
983. A green pottery bread plate, moulded with flowers and foliage, 11 1/2" wide, together with two green pottery plates moulded with fruiting vine, 9" diameter.
984. A Tonbridgeware burr walnut caddy, rectangular, the cover centrally inlaid with cuboids within a flower border, inlaid to all sides with a border of oak leaves, the interior cover having turned finial and chevron border, 5 1/2" wide.
985. A Chinese famille rose plate, centrally decorated with 2 figures in a pagoda and lakeland landscape, within a diaper rim reserved with foliate and butterfly panels, 9" dia.
986. A Delft wine flagon with hinged cover, polychrome painted with a foliate ground, reserved with a figural quatrefoil panel, with scroll handle, inscribed below 'Jean Niet 1734', 8 1/2" high.

987. A pair of German porcelain circular plinths, moulded with swags, painted with flower sprigs between gilt lines, 3" high.
988. A German porcelain mug and matching saucer of quatrefoil shape, polychrome painted and gilt in the Chinese manner, 3 1/4" high and 5 1/4" wide respectively, blue crossed sword marks to underside.
989. A Copenhagen porcelain footed cup and saucer, painted with a cameo of Josephine between gilt lines.
990. A pair of late 19thC German porcelain double gourd vases, in the style of Helena Wolfjohn, decorated with lovers in garden landscapes, divided by blue marbled panels and gilt scrolling, Faus Augustus Rex mark to base, 7" high.
991. A Leeds creamware model of a man and wife, he in yellow top hat and turquoise frock coat, she in lustre spotted coat and flowered bonnet, on green moulded base, 4" high.
992. A set of 4 Royal Crown Derby plates, decorated in the Imari palette with flowers and foliage in the Chinese manner, within shaped rims, 8 3/4" dia, pattern no 383, date code for 1895.
993. A pair of Derby plates, ensuite with the previous lot, 10 1/2" dia, 19thC.
994. A 19thC porcelain plate, of circular outline, painted with floral reserves on a scale blue ground, highlighted in gilt, 8" dia, together with a NAFAS Limited Edition plate, 8 1/4" dia. (2)
995. Spare lot.
996. A 19thC porcellaneous figure of a woman in Middle Eastern dress, collecting water at a well, well coloured, bocage clusters to the moulded base, 7" high.
997. A Staffordshire type pottery figure of a man and woman at a well, on moulded base, 7 1/2" high.
998. An early 20thC bisque figure of a German woman in traditional dress, holding a basket and umbrella, on moulded base, 9 1/4" high.
999. A pair of late 19thC bisque 'nodding' figures, modelled as seated Chinese man and woman, 5" high, another of a young boy, 3" high.
1000. A 19thC Staffordshire pottery quill holder, modelled as a recumbant spaniel, its front paws crossed, painted in ruby splashes, on moulded green and pink cushion base, 5 1/2" wide.
1001. An oak 2-section box, of rectangular outline, 10" wide.
1002. A mechanical singing bird in a gilt metal cage, seated on a brass stand with faux foliage, the circular base embossed with floral garlands, clockwork key to underside, stamped 'Made in France', 11 1/2" high.
1003. A pair of polished brass candlesticks, each having hexagonal sconce and incurving dished drip tray, over a conforming baluster stem with compressed knobs, on spreading hexagonal base, 13 1/2" high.





Lot No. 1022 & 984



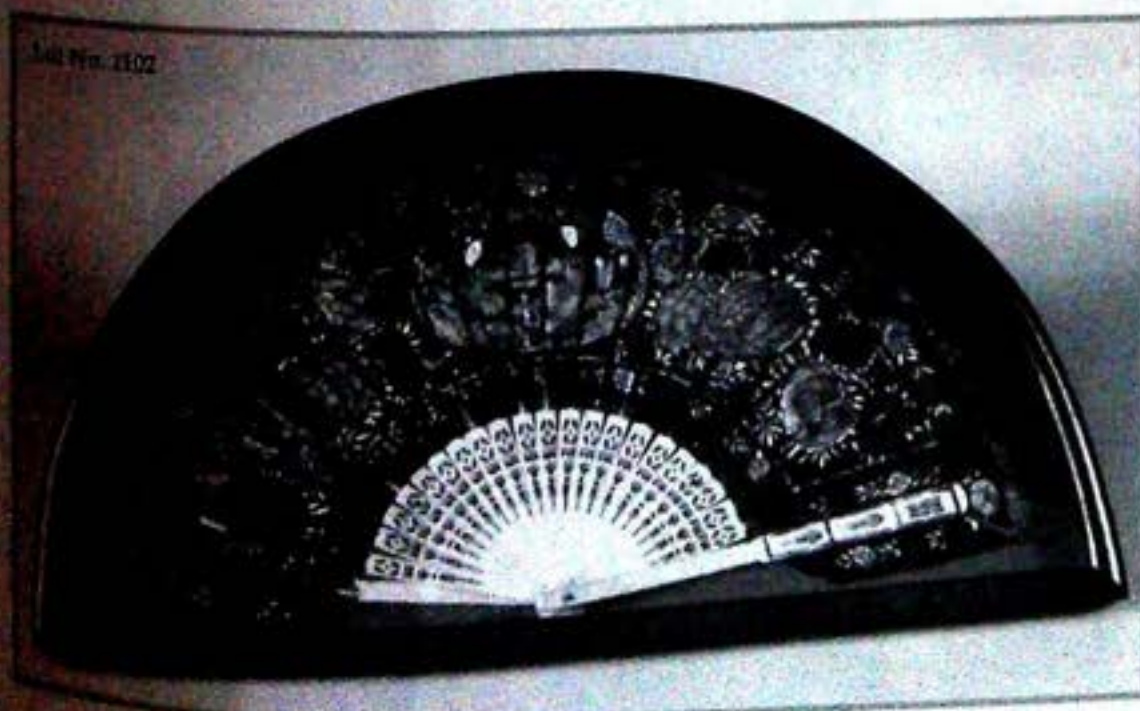
Lot No. 1023

1004. A William IV ebonised police truncheon, of plain circular outline, tapering to the handle, 20" long.
1005. A Cantonese famille rose bowl, centrally decorated with a symbolic battle scene, with elders on the seashore repelling marauders on a boat, the well painted with exotic butterflies, all within an everted rim enamelled with flowers, 15 1/2" dia.
1006. A cranberry glass shallow circular dish, on clear glass prunt foot, 8" dia, together with a cranberry glass sugar bowl, on similar foot, 4 3/4" dia.
1007. A Prattware pot lid 'Low Life', 4" dia.
1008. A 19thC Staffordshire pottery quill holder, modelled as a recumbent greyhound, on an underglaze blue cushion base, 5 1/2" wide. (AF)
1009. A Hammersley porelain dessert service, having a deep underglaze blue border moulded and gilt with scrolls and gilt with floral sprays, centrally printed with differing fruits and foliage, comprising 2 oval platters, 2 oblong platters and 12 plates, pattern no 4938.
1010. Five cranberry glass wine glasses with clear stems and foot, together with 3 further cranberry glasses with moulded bowls and clear foot.
1011. A Victorian cast brass chimney ornament, with a spire shaped screw cap, circular column and domed circular foot, cast in the ecclesiastical manner, enclosing a folding fabric face screen (AF), label to the underside 'Day's Patent Chimney Ornament Are Constructed so they may be used for Fire Screens, Flower or Scent Jars ...', 9" high.
1012. A teak tobacco jar, of barrel shape, constructed from the wood of HMS Terrible, bearing a brass plaque inscribed 'From the Teak of HMS TERRIBLE Whose Guns Relieved LadySmith', 4 3/4" high.
1013. An EPNS sugar dish, of oval outline with pierced border, scroll handles, on pedestal foot cast with foliage, green glass liner, 7" wide.
1014. A Victorian glass dome, on circular wooden base, 17 1/2" high, 10" dia.
1015. A gilt metal lantern, of square outline, with cast frame and glass panels, 2-light electric fitting, 16" high overall.
1016. A leather despatch box, of rectangular outline, covered in dark blue tooled morocco leather, with a brass swing handle to the centre of the lid, with automatic locking mechanism, stamped 'Wickwar, Manufacturer to HMS Stationery Office, 6 Poland Street', the lock stamped 'S Mordon & Co', 18" wide.
1017. An early 20thC papier mache crumb scoop, with green grain ground, decorated with bird scene, with matching brush, a black papier mache oval small tray with gilt printed border pattern, 10" wide, a leather cased travelling kit (AF), ivory backed hand mirror, etc.
1018. A green morocco leather folding photograph frame, with easel stand, stamped 'Walter Jones, Sloane Street', 9 1/2" x 7 1/4", another, black, enclosing a coloured study of a young girl, 7 1/2" x 6".
1019. A Victorian tan leather covered travelling stationery box, modelled as an attache case, with Bramah lock, the interior fitted with purple leather enclosures, 12" square (AF), together with a wooden book stand with painted panels and a small rosewood box, rectangular with slightly domed lid, inlaid with a central shield dated 1861, 5 1/4" wide.
1020. A 19thC walnut and ebonised desk stand, centre loop handle flanked by 2 glass ink wells and quill trays, with single frieze drawer, 11" wide.
1021. A brass and gun metal lamp by Patterson, stamped G.P.O. 9 1/4" high.
1022. Asprey & Co Ltd. A set of 8 miniature volumes i) Atlas of the World, ii) Gazetteer, iii) Classics and Mythology, iv) French and Latin Quotations, v) Encyclopaedia, vi) French and English Dictionary, vii) English Quotations and Proverbs, viii) Dictionary, 1921, green cloth boards, spines gilt decor, all in a mahogany book stand, 8" wide.
1023. A pair of Meissen porcelain large table lamp bases, of lobed baluster outline, well painted with exotic birds on tree trunk with insects and foliage, between gilt bands, blue crossed sword marks, circa 1924, 25 1/2" high, previously fitted with gilt metal handles.
1024. A 19thC pottery meatdish, moulded with gravy well and channels, printed and polychrome painted in the Chinese manner, 20 1/2" wide, (rivetted).

1025. A 19thC porcelain tea service, printed and painted in the Imari palette, with flowers and scrolls, marked 970 W&HL.
1026. A Prattware shrimp pot, of circular outline, printed and painted in the round, with a Shrimping Coastal Scene, entitled 'Pegwell Bay, Kent', 3 1/2" high.
1027. A 19thC Staffordshire pottery small spill, modelled as 2 youths dancing around a camp fire, with underglaze blue jackets and polychrome, on oval base with gilt line, 6" high.
1028. A 19thC Staffordshire pottery figure of Tom King, on horse facing left, painted brown in high crown hat, coat, stockings and high-low boots, a pistol in his right hand, long saddle-cloth, on oval base with title in raised capitals, 9 1/2" high.
1029. A 19thC Staffordshire pottery figure of a girl and a musician on a couch, him kneeling, wearing a plumed hat, jacket and tunic and boots, fiddle in his right hand, she wearing a bodice and skirt, and a bird on the arm of the sofa, mainly white ground with polychrome highlights, 10 1/4" high. See Pugh page E443, fig 271.
1030. An early 20thC matching castor spoon and server, cast in tri-colour metals, in the Art Nouveau manner with stylised flowers to the bowls, the handles similar in low relief, in fitted case marked Vve Fabre, 6 Rue Argenterie, Montpellier.
1031. A pewter flagon and cover, of Art Nouveau design, moulded and cast with stylised foliage (hinge damaged), 6 3/4" high, a pewter string box, a pewter muffineer and 3 tankards.
1032. An engraved and cut glass biscuit barrel with EPNS mounts, an EPNS 2-jar pickle stand and 2 glass preserve pots.
1033. An Edwardian EPNS 4-bottle cruet stand, with central foliate cast handle, on scroll feet, panel cut jars, 1 cover missing.
1034. A heavy glass decanter, diamond and thumb cut circular body and stopper, 14" high.
1035. An EPNS 4-bottle cruet stand, of oblong shape, with centre loop handle and on bun feet, the bottles with diamond cut bodies.
1036. A 'Sevres' porcelain vase and cover, of shouldered ovoid outline, having a dentil rim, trailing ivy leaf border and loop girdle in gilt, painted with trailing roses, the domed cover with pierced finial and conforming ivy leaf border, 8" high, painted mark in blue.
1037. An 18thC wine glass, the bell shaped bowl on a raised baluster knop and folded foot, inscribed to the foot in scratch 'Memento Farnborough Collis 1749', 4 3/4" high.
1038. A Japanese bronze 2-handled dish of circular outline, raised on 3 peg feet, cast with Japanese characters to the sides, seal signature to underside, 10 1/2" dia.
1039. A 19thC Anglo-Indian tortoiseshell box, with bone inlaid ornament, on 4 paw feet, velvet lining, 10 1/2" wide. (AF)
1040. An early 20thC Japanese wooden cigarette dispenser, gilt with chinoiserie decorations, having a spring driven push mechanism and mounted with a white metal stork, 5 1/2" wide.
1041. An earthenware wall plate, polychrome painted with an arrangement of Alpine flowers, label verso 'Howell & James Art - Pottery Exhibition 1880', painted by Lady Bromley, 12" dia.
1042. A French porcelain parasol handle, printed with a figural vignette and with yellow cast metal mounts, 8", and 2 lady's fans.
1043. A Bodley pottery part tea service, painted in underglaze blue, iron red and gilt in the Derby Imari manner, pattern no 8662, comprising 4 cups and saucers, sugar bowl and cover and 2-handled tray, 17" wide.
1044. A late Victorian walnut jewellery casket, the slightly domed hinged cover having inset brass handle (part missing), enclosing a tray, over 2 frieze drawers with brass handles and enclosed by a drop-down bevel glass panel, 12 1/4" wide.
1045. A gentleman's leather travelling case, fitted with writing and toiletry requisites, including a leather inkwell of rectangular outline, hinged cover with brass handle stamped in gilt 'Berry's Patent', 9 3/4" wide, late 19thC.
1046. A pair of late 19thC opaque glass vases, with everted rims, and on spread foot, the turquoise ground painted with spring flowers, 5" high.
1047. A fine Tibetan cast metal head of a young Buddah 12" high.
1048. An Oriental gilt metal figure of a seated Buddah, on shaped cushion base, rectangular plinth, 9 1/2" high.
1049. A Dunhill chrome lighter modelled as a lidded tankard, 3 1/2" high.
1050. An early 20thC EPNS tea kettle, of panelled oval outline, composition overhead handle with scroll uprights, lobed finial to the domed cover, the stand with fluted legs, 13" high, (lynch pin missing).
1051. An Edwardian set of EPNS fish servers, engraved, with ivory handles and foliate cast masts, in fitted case.
1052. A pair of late Victorian pottery spaniels, having copper lustre splashes, yellow eyes, blacknose, moulded with separate front leg, c. 1900, 8 1/2" high.
1053. A pair of Cantonese famille rose baluster vases, each having everted rims, elongated neck mounted with 2 crustacea handles, the body with serpents, enamelled with chinese familial interiors, the ground with flowers and stylised birds, over lappet skirt, on gilt metal cast bases, 18 1/2" high, (one AF).
1054. A gilt metal 10-light candelabra, (fitting preceding lot), with scrolling branches, the sconces with everted egg and dart rim and foliate flanges, 16 1/2" high including sleeve.
1055. Kodak No. 4 Panoramic Camera.
1056. A mahogany Class B balance by W A Webb Ltd.

1057. An early 20thC silver plate and glass dessert cruet, the stand incorporating a flute edged cream jug and sugar bowl and fitted with 2 frosted glass dishes.
1058. A 19thC tin bait box and old fishing rod.
1059. A pair of plated candlesticks and a pewter tankard.
1060. A Nottingham lace table cover.
1061. A Victorian stepped brass fender with gallery.
1062. A brass and wirework spark guard.
1063. An optician's oak trial case of test lenses.
1064. A pair of 19thC brass candlesticks, on baluster knopped stems and domed foot, 8" high.
1065. A pair of spelter seated figures of a young boy and girl, both wearing hats and frocks in the Victorian style, 4 1/4" high.
1066. Walt Disney: 78rpm record Farmyard Symphony parts 1 and 2, by His Master's Voice.
1067. A Victorian mahogany framed campaign table mirror with sliding cover and easel back 11" x 9"
1068. An EPNS circular tray.
1069. Five facsimile colour prints, framed.
1070. An Indian white metal rose bowl, mid 20th C of compressed circular shape, embossed with trailing foliage within shaped panels, having 2 scroll handles, on knopped stem and domed stepped foot, fitted with a radiating grill with lobed finial, 12" high, 16" over handles, (tests as silver).
1071. A silver plated candelabra.
1072. A Zeiss Ikon Contina 35mm camera, with Pantar lens, leather case.
- 1072A. A Canon QL19 35mm camera, leather case, and a Zenit-E 35mm camera with Helios lens, leather case.
1073. After Rancoulet. A pair of late 19thC spelter figures "Rencontre a la Fontaine" on circular bases, 16 3/4" high.
1074. A late 19thC German lute, by Schutz, in strained beech and ebonised case, with gilt scale 21" x 15 1/2".
1075. A black opaque glass ovoid vase and cover, painted in colours with bird, insect and flowers, the stepped cover with spire finial, 22 1/2" high, together with an opaque turquoise glass vase and cover, 14" high, and a Sunderland lustre small milk jug, painted in black with verse, 2 3/4" high, small chip to spout.
1076. Two pairs of horse brasses, on leather straps.
1077. Five brass flow cups for paint/adhesive viscosity.
1078. Various games etc in beech box, inc Totopoly, draughts, dominoes, together with a Japanese table cabinet (AF).
1079. A qty of Midwinter teaware, linen etc.
1080. A lady's manicure set in a shell covered musical box and a qty of early 20thC linen trimmings.
1081. A qty of Caucasian carpet squares.
1082. After the Antique. A bronze group depicting 'Romulus and Remus', on square base, 19thC, 9" wide.
1083. A 16thC. French bronze mortar cast in relief, 4 1/4" dia.
1084. A pottery 'coopered' barrel jug, a pink satin glass jug, 4 scents, a studio pottery dish and a lustre candlestick.
1085. An EPNS pierced sugar basket with swing handle, on 3 bird mask and strapwork legs with claw and ball feet, another sugar basket, a castor, 2 circular salts with sapphire glass liners, castor spoon, sugar tongs and condiment spoon. (8)
1086. A Victorian corkscrew with turned fruitwood handle (brush missing) 5 1/2".
1087. A stoneware 2-handled cooking pot and cover, another large (AF) etc
1088. A copper coal hod, with swing handle 13" high.
1089. A copper coal helmet with swing handle, and on spreading foot.
1090. A Victorian pierced brass trivet, rectangular on four legs with claw feet 15" x 17".
1091. An enamel bread bin, circular, with domed lid, inscribed "Bread", 11 1/2" high, together with an enamel toilet pail, another with swing handle.
1092. A pair of brass metal curtain tie backs.
1093. A Victorian copper warming pan with pricked decoration and ebonised turned handle 42".
1094. Three copper graduated water jugs with loop handles, 11 1/4" to 6 3/4" high.
1095. A railway lamp, railway man's shovel and spanner.
1096. An early 20thC gilt metal wall 3-branch light fitting, cast with acanthus leaf 17".
1097. A brass oil lamp with turned and tapering stem on domed foot and square plinth, 22" high, inc glass chimney together with a mid 20thC Pyrex coffee maker.
1098. A pair of early 20thC brass 3-light electroliers, having dished bases suspended by chain on scrolling brackets.
1099. A box of early 20thC linen, lace, madeira napkins etc.
1100. Three Aladdin paraffin lamps, one with red cased glass shade.
1101. An oak tantalus with EPNS mounts stamped Betjemanns Patent London 1945, fitted with three cut glass square decanters, 14 1/4" wide.
1102. A 19thC fan, having pierced bone fan, the feather leaves painted in blue and white in the Chinese manner with a figural panel flanked by flowers and within foliate border, enclosed within a mahogany case 23" wide.

1103. A Continental wooden carved figure St. George and The Dragon, painted in muted colours, on oval base, 18³/₄" high 17" wide.
1104. A fox fur with mask.
1105. A taxidermy figure of a Snowy Owl on log with ferns and moss, in rectangular case, 16³/₄" x 13".
1106. A qty of 19thC green pottery leaf moulded plates inc a serving dish, 6 egg coddlers etc.
1107. A Jones hand sewing machine with swan neck, heavily gilt, with instruction book and accessories, 14" approx.
1108. A First World War Ealing Gun sight by W. Ottway & Co. 26" long.
1109. A Railway hand lantern, painted white, 15" high.
1110. A First World War bayonet with steel blade, 16¹/₂" long together with a wooden cosh, 12" long.
1111. A Family Fire Escape manufactured by J H Heathman & Co. London, enclosed within a wooden box, with paper label to the interior with instructions, 20" wide.
1112. A Riley's Patent stained beech snooker board, 24" wide.
1114. An early 19thC English bayonet with brass hilt, 23" long.
1115. A George V malaca cane with silver knop, Birmingham 1914, 37¹/₂" long, another cane with ivory handle and one other.
1116. A late 19thC brass fender, with scroll ends and gallery and cavetto plinth, 53" wide 14¹/₂" deep.
1117. A brass fender, of square section with turned gallery, fluted finials, and moulded plinth, 50¹/₂" x 12".
1118. A late 19thC brass fender, having open scroll ends, turned gallery and moulded plinth, 64" x 16¹/₂".
1119. A set of Avery 300 cwt platform scales with cast armorial.
1120. A set of child's platform scales
1121. A set of child's platform scales.
1122. A Boozey and Hawkes Imperial Euphonium, cased.
1123. A painted steel pub sign from "The Woolpack", North Summercotes.
1124. A Georgian brass and wirework low sparkguard.
1125. A Georgian steel platform fender 36" wide.
1126. Stoneware storage jars and spirit barrel by Mowbray of Grantham and pine cutlery tray.
1127. A large Copeland pottery wash bowl.
1128. A brown and cream enamel sign marked "Lyons Coffee and Chicory Extract" 12" x 34".
1129. An Art Nouveau brass fender 4ft. wide.
1130. A brass pancheon, Chinese gong, another and stair rods.
1131. A Chinese square tapering vase decorated in underglaze blue (much damage).
1132. A pair of gilt brass 8-branch electroliers.
1133. A Victorian copper warming pan with turned handle.
1134. A Kodak Model B Portrait Plate Camera with 10" Ross Lens, plates and case.
1135. A 18thC Leeds creamware coffee pot with loop handle, (spout and cover missing)
1136. A 19thC Cantonese enamel bowl decorated with flowers on a bleu-de-mazarin and turquoise ground (AF).
1137. A Decomania papier mache vase
1138. An orange lacquer silhouette bowl.
1139. An oak framed notice giving the rules and regulations of Fulbeck Reading Room.
1140. An early Samsonite travel case and pilot bag.
1141. A Victorian rise and fall style brass and iron hanging lantern converted for electricity.
1142. Four Victorian plaster picture frames (AF).



1143. A pair of English hammered copper vases with flared rims, tapered waist and Art Nouveau decorated bases, makers mark to base and registration number 3" high.
1144. A late 18thC English Pearlware chestnut basket with rose painted centre. Restored handle. 12" x 8".
1145. After the Antique. A marble figure of a wild boar, 10".
1146. A Victorian needlework sampler by Susanna Bolton, 1858, aged 10. 18" x 11".
1147. A miniature 19thC. Sunderland lustre milk jug with verse, 2³/₄".
- 1148 to 1480. Spare Lots

Commencing at 2.30pm

Textiles

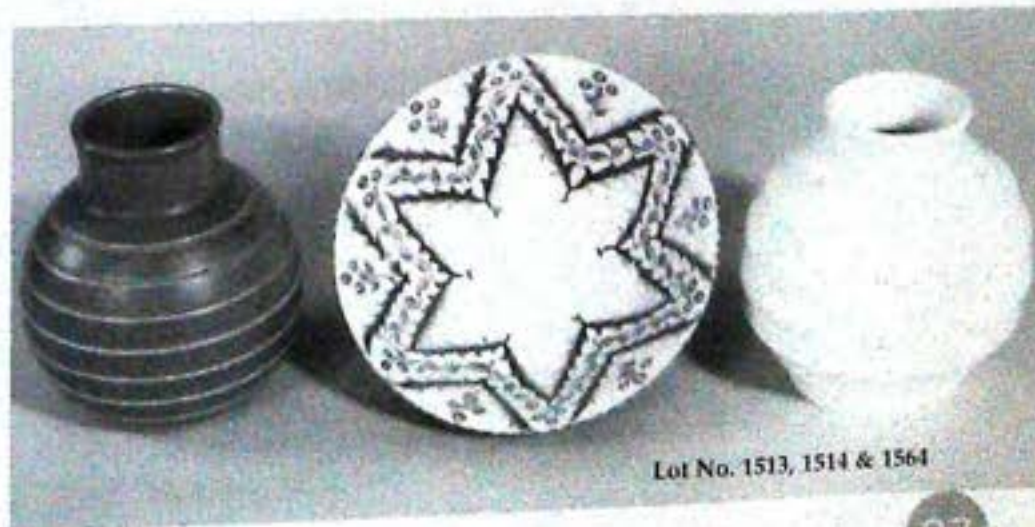
1481. A gros point wall hanging worked in 4 vertical panels, each with flowers, foliage and wildlife, on a deep red ground, 49" x 48".
1482. An early 20thC rayon fringed tablecloth, worked in pink, yellow and green with flowers, birds and foliage on a rich blue ground, 58" square.
1483. An Indian servant's waistcoat, heavily worked with gold thread with a paisley design on black ground.
1484. An Indian servant's waistcoat of tan velvet, heavily worked in gold and coloured thread, with scrolling diamond panels centred by mirrored medallions.
1485. A pair of silkwork and gold thread crests from the Fane Estate, worked in coloured threads on a green ground, embroidered with family motto, 'Ne Vile Fano', having gold wire thread fringes, 22" x 19" (AF), together with a gros point part panel. (3)
1486. A quantity of haberdashery items including silks, partly finished garments, etc.
1487. A qty household linens including tablecloths, napkins, lace trimmed handkerchiefs, etc.
1488. A partly finished woolwork hanging, trimmings, wools, etc.
1489. A qty linen sheets and pillowcases, etc.
1490. Domestic linen.
1491. Domestic linen.
1492. A pair of heavy damask curtains, peach and gold with lining and interlining, approx 142" long x 92" wide.
1493. Two pairs of glazed chintz curtains, printed with nesting birds, fruit and butterflies, on a yellow ground, lined and interlined, approx 112" long x 53" wide.
1494. A Victorian woolwork cushion (AF), 2 silk cushions with chinoiserie embroidered panels and a kelim cushion. (4)

1495. Three woolwork cushions with floral decoration.
1496. Three Indian cushions.
1497. Qty assorted cushions.
1498. A late 19thC hand-made quilt with floral motifs.
1499. A maribou cape, an ostrich feather shoulder cape and a white fur stole. (3)
1500. A heavy woven curtain, worked in stylised flower repeat pattern in autumn colours, with braid trimming, approx 130" long x 108" wide, some fading and tears.

20th century collectables

1501. A Classique Royal Doulton figure 'Christina', modelled by Timothy Potts, no CL3991, 11¹/₄" high.
1502. Another example of 'Christina'.
1503. A Classique Royal Doulton figure 'Julia', modelled by Timothy Potts, no CL3993, 10³/₄" high.
1504. A Royal Worcester porcelain figure of a jay, perched on a leafy branch, having a matt naturalistic glaze, model no 3248, 6³/₄" high, modern.
1505. A Royal Worcester porcelain figure of a woodpecker, perched on a rock moulded with ivy, having a matt naturalistic glaze, model no 3249, 7" high, modern.
1506. A Wedgwood pottery coffee service, the drabware ground painted with simple flower forms and geometric bands, early 20thC, (coffee pot spout chipped).
1507. A bronze sculpture of a young girl and playful kitten, seated on a chair, signed, 12" high.
1508. A 20thC Venetian glass vase, of knopped baluster shape, with wavy rim, elongated neck with applied clear glass handles, internally decorated with white, green, blue and red splashes, 13" high.
1509. A Beswick hexagonal fruit bowl, moulded with vertical panels, border lines and the well with concentric circles, glazed in streaky blue with orange splashes, on three feet, no. 245 to underside, 11¹/₄" wide, together with a Beswick "Handcraft" pottery biscuit barrel, painted with orange daisies and geometric panels, raffia handle, 4³/₄" high (2)
1510. A Copeland Spode "Italian" tyg, printed in blue, the interior printed with Old Lang Syne text, repair to one handle, 5¹/₂" high.
1511. A studio pottery two handled vase, with everted rim over baluster body, having a blue/grey ground with blue slip, with purple flashes, 6¹/₂" high.
1512. A Beswick palamino horse with swish tail (version one), 9" high, model no. 1182.
1513. A Wedgwood pottery vase by Keith Murray of ribbed spherical shape with plain cream glaze 6" high.
1514. A Wedgwood pottery vase by Keith Murray, the green spherical body with horizontal fluting, 6" high.

1515. A Chinese blue and white two handled soup tureen and cover, of irregular octagonal shape, painted in blue with Chinese landscapes, the cover with gilim finial 14" wide.
1516. A Coalport porcelain "Strawberry" pattern cream jug and sugar bowl, of oval shape with basketweave body, brown rim and painted with strawberries, modern, together with a Carltonware pottery salad dish, moulded as a lettuce leaf and two tomatoes applied to the well, reg. no. 716032, 12" wide (3).
1517. A Crown Devon pottery salad bowl, with green leaf and basket moulding raised on three lobsters, 8 1/2" diameter.
1518. A Carltonware pottery leaf moulded oval platter, decorated with lobster in relief, 14" wide.
1519. A Cooper Clayton pottery character jug, of Churchill, in grey trilby and astrakhan collar, yellow/brown handle, 3 1/4" high.
1520. A Beswick porcelain model of a horse "Spirit of Fire" grey matt, model no. 2829, 8" high, on black wooden plinth.
1521. A Beswick porcelain model of a horse "Spirit of the Wind", matt brown, model no. 2688, 8" high.
1522. A Beswick porcelain model of a mare and foal, "Spirit of Affection", matt palomino, model no. 2689/2536, 8" high, on wooden plinth.
1523. A Beswick porcelain model of a shire horse, "Spirit of Earth", matt brown, model no. 2914, 7 1/2" high.
1524. A Beswick porcelain model of "Mill Reef", matt brown, model no. 2422, on wooden plinth, 9" high.
1525. A Capo di Monte bisque porcelain figure of a chestnut horse, with black mane and tail, signed G. Onnary, on oval plinth and wooden base, 9 1/2" high.
1526. A Beswick figure of a Donkey, grey/brown gloss, model no. 2267, 5 1/2" high.
1527. Royal Doulton: "Shore Leave" HN 2254 by M. Nicoll 1965-1978 7 1/2" high.
1528. Royal Doulton: "The Balloon Man", HN 1954, by L. Harradine, 1940, 7 1/4" high.
1529. Royal Doulton: "The Pied Piper" - HN 2102, by L. Harradine, 1953-1976, 8 1/2" high.
1530. Royal Doulton: "Gandalf, Middle Earth" HN 2911, by H. Sales, 1979-1984 7" high.
1531. Royal Doulton: "Huckleberry Finn" HN 2927, by D. Lyttleton, 1982-1985, 7" high.
1532. Royal Doulton: "Boromir" HN 2918, by H. Sales 1980-1984, 6 3/4" high
1533. Royal Doulton: "Samwise" HN 2925, by D. Lyttleton, 1982-1984, 4 1/2" high.
1534. Royal Doulton: "Tom Bombadil" HN 2924 by D. Lyttleton, 1982-1984, 5 3/4" high.
1535. Royal Doulton: "Frodo" HN 2912, by H. Sales, 1979-1984, 4 1/2" high.
1536. Royal Doulton: "Tom Sawyer" HN 2926, by D. Lyttleton, 1982-1985, 5 1/4" high.
1537. Royal Doulton: "Barliman Butterbur" HN 2923, by D. Lyttleton, 1982-1984, 5 1/4" high
1538. Royal Doulton: "River Boy" HN 2128 by P. Davies, 1962-1975, 4" high.
1539. Royal Doulton: "Bilbo" HN 2914, by H. Sales, 1979-1984, 4 1/2" high.
1540. A Bing & Grondhal porcelain shell dish moulded with a seated figure of a naked youth, 8 1/2" wide.
1541. A Beswick figure of Beatrix Potter's 'Tommy Brock', gold backstamp, 3 3/4" high.
1542. A Beswick figure of Beatrix Potter's 'Foxy Whiskered Gentleman', gold backstamp, 5 1/4" high.
1543. A Royal Doulton character jug, 'Buddy Holly', designed by David B Biggs, Ltd Edition no 767/21500, 7 3/4" high.
1544. A Royal Doulton figure 'Taking Things Easy' by Mary Nicell, HN2680, 6 3/4" high.
1545. A Moorcroft small vase, spherical, decorated with an anemone design on a blue mottled ground, 3 1/4" high, together with an hibiscus pattern small dish, 3 1/2" dia (damaged and re-glued).
1546. A Hummel figure of a young boy chorister no 135, 4 3/4" high.
1547. A Hummel figure of a young boy with flute, no. 85, 5 1/4" high.
1548. A Hummel figure of a young boy with drum, No. 240, 4 1/2" high.



Lot No. 1547



Lot No. 1556



1549. A Hummel figure of a young telegram boy, no. 119, 5" high.
1550. A Moorcroft vase of circular tapering outline, decorated in the Pomegranate pattern on a deep blueground, c.1916, 10¹/₄" high.
1551. A Hummel figure of Madonna and Child, no. 10/1, 8¹/₄" high.
1552. A Hummel figure of a disciple, no. 10, 8¹/₄" high.
1553. A Moorcroft small dish, decorated with Hibiscus on a white ground, circa 1950, 3¹/₄" diameter.
1554. Belleek: Creamjug, honeypot and cover, pepperpot, salt, trunk tree vase, all painted with shamrocks, and a pair of swan posy vases, modern green printed factory marks.
1555. A Dutch pottery vase of spherical outline, polychrome painted with stylised plant forms, below lappet shoulder, painted mark to underside 325 Corel Sihoon Houen, Holland, 9" high, together with terracotta shouldered baluster vase, the brown ground having green collar over yellow pendant border, marked Epworth 1982, 7¹/₄" high.
1556. A pair of Moorcroft footed ovoid vases, painted with the Pomegranate pattern on a blue/green ground, circa 1916, green painted signature, impressed Burslem. 14" high.
1557. A Carltonware dish, of irregular oblong shape, the lilac ground moulded to one side with convolvulus and foliage, 11" wide (hairline crack).
1558. A Wade Heath pottery jug, of waisted baluster shape, painted with simple flower and leaf forms, with reeded girdle, stepped handle, c.1934, 9" high.
1559. A Shelley pottery vase, of tapering circular form, the green ground with orange and grey streaky glaze, on stepped circular foot, 8" high.
1560. A Carltonware leaf dish, moulded in relief with foxgloves, no. 1870, 9¹/₂" wide.
1561. A blue glass triple gourd shaped vase, internally decorated with white trailing vines, 16" high.
1562. A reproduction famille rose porcelain figure of a Chinese elder, dressed in ceremonial robes, 19" high.
1563. A new figure of a young boy with a football, dressed in dungarees, on circular base 7¹/₄".
1564. A Wedgwood bowl by Louise Powell, internally decorated with simple flowers and leaf form arranged in star formation, in blue, green, red and lustre, the exterior underglaze blue, signed with monogram, impressed factory mark and no 2356 to underside, 7¹/₂" dia, c.1920.
1565. A round shape Carltonware teapot with crest for Burnley, a Shelley cup and saucer with crest for City of Lincoln and 4 other plates.
1567. A pair of Moscow porcelain bowls, green ground painted with leaves, 4³/₄" dia, another pair, similar, with Persian crest and inscription, 4³/₄" dia, another bowl, 5" dia.
1568. Six Moscow porcelain bowls, variously decorated, 6¹/₂" dia.
1569. A pair of white metal tazza, the circular bowls supported on 3 cast uprights, on domed foot, 5" high, 4¹/₂" dia, (tests as silver).
1570. A Moscow hard paste porcelain part tea service, the blue ground with flowered reserves, comprising demi-tasse, saucers, teapot and 2 plates, printed factory marks in red.
1571. 4 Caithness glass vases
1572. A set of 6 harlequin colour dipped and engraved water glasses.
1573. A dessert set of 10 plates and 1 serving plate in green translucent glass with raspberry and leaf impressed decoration Patt mark 7777.
1574. A large stoneware vase of spherical outline by Bernard Leach, covered with streaky and mottled brown and olive green glazes, incised concentric circles to the shoulders, and abstracts to the body, impressed initials BL and St Ives stamp, 11" high, 10" dia.
1575. A Chinese famille noir porcelain charger.
1576. A limited edition Cash Fine Art silk picture of The State Coach, boxed.
1577. Johnson (Ben) - Dramatic Works, London 1811, 4 vols. marble boards and calf spines (AF).

1597. A walnut and ebonised cutlery canteen, with fitted interior and single drawer, containing a harlequin 'rat tail' pattern table service, the box having a maker's label, Joseph Rodgers & Sons, Sheffield.
1598. A set of 1950s/60's transfer pattern glassware and earlier glassware.
1599. A Moscow porcelain wall plaque, the celadon ground reserved with panels of urns, flowers and other motifs in the Chinese manner, the ground painted overall with flowers and foliage within a Greek key and foliate border, 13" dia, together with a similar dish, 10" dia.
1600. A part tea service, pink border and Greek key pattern.
1601. A collection of Del Prado cast metal soldiers.
1602. Pewter and crystal fantasy figure 'Le Morte D'Arthur'.
1603. Pewter and crystal fantasy figure, 'The Keeper of the Treasure'.
1604. Pewter and crystal fantasy figures, 'special Christmas 2001, The Carol Singers'.
1605. Pewter and crystal fantasy figure, 'Excalibur'.
1606. Pewter and crystal fantasy figure, 'Merlin'.
1607. Pewter and crystal fantasy figure, 'The Guardian'.
1608. Pewter and crystal fantasy figure, 'The Time Keeper'.
1609. Pewter and crystal fantasy figure, 'The Dragon of the Lake'.
1610. Pewter and crystal fantasy figure, 'Sir Lancelot'.
1611. Pewter and crystal fantasy figure, 'Return of Excalibur'.
1612. Pewter and crystal fantasy figure, 'Sir Percival and the Grail'.
1613. Pewter and crystal fantasy figure, 'King Arthur'.
1614. Pewter and crystal fantasy figure, 'The Incantation'.
1615. Beswick 'orange' marmalade pot and cover.
1616. An early 20thC earthenware fruit bowl, polychrome floral printed decoration and a pair of glasses.
1617. A Denesby Ware (Bourne Denby England) earthenware owl jug in blue and green dripped glaze.
1618. A Denesby Ware (Bourne Denby England) earthenware owl jug in blue and green dripped glaze.
1619. A Denesby Ware (Bourne Denby England) earthenware owl jug in blue and green dripped glaze.
1620. A Denesby Ware (Bourne Denby England) earthenware owl jug in blue and green dripped glaze.
1621. A Denesby Ware (Bourne Denby England) earthenware owl jug in blue and green dripped glaze.
1622. A Denesby Ware (Bourne Denby England) earthenware owl jug in blue and green dripped glaze.
1623. A Denesby Ware (Bourne Denby England) earthenware owl jug in blue and green dripped glaze.
1624. A Denesby Ware (Bourne Denby England) earthenware owl jug in blue and green dripped glaze.
1625. A Denesby Ware (Bourne Denby England) earthenware owl jug in blue and green dripped glaze.
1626. A Denesby Ware (Bourne Denby England) earthenware owl jug in blue and green dripped glaze.
1627. A Denesby Ware (Bourne Denby England) earthenware owl jug in blue and green dripped glaze.
1628. A Denesby Ware (Bourne Denby England) earthenware owl jug in blue and green dripped glaze.
1629. A Denesby Ware (Bourne Denby England) earthenware owl jug in blue and green dripped glaze.
1630. A Denesby Ware (Bourne Denby England) earthenware owl jug in blue and green dripped glaze.
1631. A Denesby Ware (Bourne Denby England) earthenware owl jug in blue and green dripped glaze.
1632. A Denesby Ware (Bourne Denby England) earthenware owl jug in blue and green dripped glaze.
1604. A small qty of Royal Commemorative china and a tin box.
1605. A marquetry inlaid fitted jewel box.
1606. A qty of Edwardian and other decorative plates and bowls.
1607. Decorative china inc a Victorian lustre bowl, blue and white Johnsons china, etc.
1608. An air pistol.
1609. A plush toy figure of Happy (Seven Dwarf) and a plush doll.
1610. A small leather suitcase.
1611. A boxed clockwork toy 'Puppet Show Pinocchio on the Swinging Stage', made in Japan.
1612. A Britains Miniature Gardening No 4MG, boxed.
1613. A qty of playing cards including Booths Steamship Co Ltd and an unopened pack of Hansa Line cards.
1614. Three early 20thC cloisonne salts.
1615. A Merrythought soft monkey with plush face, 29".
1616. A Royal Worcester figurine of a young girl 'Only Me', No 3226.
1617. A burr elm novelty cigarette dispenser with tortoise and dog decoration.
1618. A pair of floral decorated hand painted jugs with triangular handles, c.1920.
1619. Sylvac and other pottery.
1620. Boxed shaving equipment.
1621. Early 20thC trinket set decorated with violet sprigs and 2 other pieces. 20-30
1622. A model of the Coronation coach, Coronation chair and figurines. (AF)
1623. A selection of cut crystal glassware and a commemorative dish.
1624. Cut crystal and glass decanters.
1625. Various Dinky and other vehicles, c.1940-50, in a played with condition.
1626. Various Dinky and other vehicles c.1940-50, in a played with condition, including a model of the land speed vehicle driven by John Cobb.
1627. A pair of 'Enchantica' resin figures of wizards and 2 of elves.
1628. A Border Fine Arts figure of otters 'Water Babies' No 80660.
1629. A Border Fine Arts figurine, 'Land Ahoy', No 0606, mice sailing a banana.
1630. A Border Fine Arts figurine, 'Prize Blooms', A0458, a goat eating roses.
1631. A Border Fine Arts figurine, 'Taking No Notice' No A0194, a border collie barking at a tabby cat.
1632. A pair of Border Fine Arts figurines, both the same 'Sweet Dreams', no A1201, a collie, cat and mouse sleeping.

1633. A T G Green blue and white banded jug and cover (black back stamp).
1634. Latex squeaky toys (copies of Spitting Image puppets) of David Owen/David Steele and Margaret Thatcher.
1635. A Corgi model of Queen Elizabeth II Golden Jubilee Coach and horses.
1636. A qty of Calyxware side and tea plates.
1637. A qty of Collectors plates, various subjects and makes.
1638. A composite doll c.1940-50 19".
1639. A glass witches ball.
1640. Two pieces of studio glass.
1641. A modern large ruby glass vase with twisted clear glass decoration and a green glass studio vase.
1642. Eight pictorial calendars inc B.P. 1975, Silcocks 1933 and 1935, Glass Export 1959.
1643. Twelve "pin-up" calendars inc Pirelli 1984, Avon 1972, 1974, 1977.
1644. A 20thC oriental style figurine of a mythical animal.
1645. Edwardian glassware, engraved and hand painted and porcelain roses.
1646. A reproduction cast iron door stop.
1647. A glass yard of ale and a willow carpet beater.
1648. A pair of 20thC glazed bisque German figures of a young girl and boy.
1649. A square studio pottery dish with inscribed Maori style decoration - dark metallic glaze 8" square.
1650. A studio pottery wall plaque depicting a minstrel 14 1/2".
1651. "The Twix Twin Cadet Railway", electric, battered box.
1652. A Mamod S.E.2. live steam engine.
1653. A Hornby Dublo Set 2023 Caledonian Passenger Train, battered box.
1654. A Palitoy 00 gauge 69001 Locomotive and a clockwork loco (AF) and a part steam engine.
1656. A Dinky Supertoys 571 Coles Mobile Crane boxed, and an Astra Fort Gun, boxed.
1657. Christies Works of Art auction catalogues.
1658. Various Christies auction catalogues. (3)
1659. A large selection of Postcards. (2)
1660. A set of 12 Chinese collectors plates, boxed with certs.
1661. A Bassett-Lowke 'O' gauge clockwork locomotive and tender, Prince Charles 4-4-0 in LNER livery.
- 1662 to 1678. Spare Lots

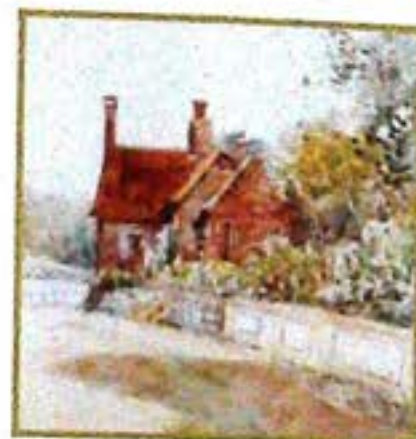
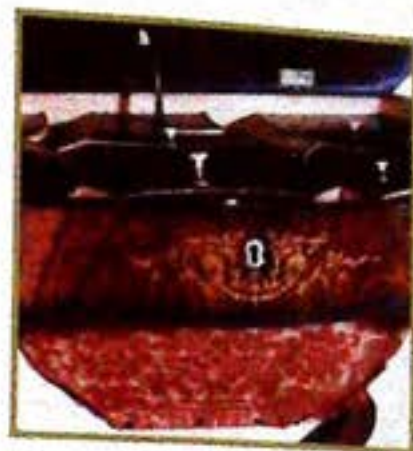
Carpets & Rugs

1678. A blue ground hand made Persian Gabbeh Kelim carpet 94" x 121".
1679. A Chinese carpet, the pink ground worked overall with flowers and medallions in blue and cream, within 5 borders. 16' 6" x 11' 6".
1680. A middle Eastern carpet, the red ground with an overall design of medallions and motifs in blue and yellow, multi borders. 16' 6" x 12' 6".
1681. A Middle Eastern hand woven prayer rug, the green field with a hanging pendant, flanked by columns, foliate spandrels, enclosed by red and yellow foliate borders 80 1/2" x 58 1/2".
1682. A Turkish rug with three red geometric medallions on a blue ground, with three borders 76" x 54".
1683. A Caucasian part rug, with geometric medallions within multi borders 43" x 44". And carpet pieces
1684. A Middle Eastern rug with ten medallions on a brown ground enclosed within 3 borders, 60" x 35".
1685. A Zekhiani rug.
1686. An Herathi Rug.
1687. A Middle Eastern rug, with floral medallions linked by trellis on a cream ground within three floral borders 69" x 61".
1688. A Chinese carpet with flowers, trees and pagoda on cream ground, the blue border with stylised birds, boat and other motifs 119" x 97".
1690. A Middle Eastern rug, with central blue lozenge on red ground within a large medallion, spandrels with abstract motifs, multi borders, 78" x 53".
1691. A cream ground handmade Abusson type needlepoint rug 72 1/2" x 48".
1692. A rust ground handmade woollen Persian Afshar carpet 96" x 54".
1693. A blue ground Bokhara design Madras rug, signed 90 1/2" x 59".
1694. A Chinese handcut rug.
1695. A fine 20thC. Persian Carpet. 158" x 117".

End of Sale.

CONDITIONS OF SALE

1. These Conditions together with any Notices to Purchasers are the only terms and conditions subject to which Golding Young & Co ("the Auctioneers"), as agents for the Vendor will sell goods to a purchaser ("the Bidder") and all other conditions, whether express, or implied at common law or by statute as are capable of lawful exclusion are hereby excluded.
2. The highest bidder shall be the buyer. The Auctioneers reserve the right of regulating the biddings; of rejecting any bid; and of bidding for, withdrawing, consolidating, dividing or altering the order of lots.
3. The purchase money for each lot with the usual commission of 15% on the first £100 and 12.5% thereafter (min £1 per lot) plus VAT at the current rate shall be paid at the fall of the hammer (if required). Each lot at the fall of the hammer shall be at the sole risk and expense of the buyer, and shall be paid for and removed immediately after the conclusion of the sale, but no lot shall become the property of the buyer, or be removable until paid for, and if taken away in contravention of these conditions without an order for removal signed by the Auctioneers, they shall have power to seize the same by their servants or agents, or otherwise, or the Auctioneers may recover either the lot sold or the price thereof (at their option) by action at law.
4. No contra account of any description whatever will be allowed to the buyer as a set off, and payment for each Lot shall be made to the Auctioneers or their clerk only, and a buyer paying by cheque must give satisfactory references.
5. For all purposes of this sale the Clerk of the Auctioneers shall be deemed to be the agent of both seller and buyer.
6. A bidder shall not be allowed to retract his bidding after the fall of the hammer, and he shall give up his full name and address if required. The Auctioneers will not recognise the transfer of any lot from one buyer to another, nor make any alteration in the sale book in respect thereof.
7. The Auctioneers are acting only as agents, and give no personal warranty as to the condition, quality or authenticity of any chattels offered for Auction. Any catalogue description is given merely as guide to purchasers, any description can be changed from the rostrum before the lot is sold. If a purchaser buys without previous inspection he will do so at his own risk.
8. Notwithstanding any other terms in these Conditions, if within 7 days of the Sale a purchaser gives notice in writing that a lot is a deliberate forgery, with supporting factual evidence, the Auctioneers may rescind the transaction. The burden of factual proof lies with purchaser, mere opinions will not satisfy. This benefit is not assignable.
9. If any buyer neglect or refuse to comply with the above conditions or any of them, his deposit money (if any) shall be forfeited, and the lot uncleared may, at the option of the Auctioneers, be resold without notice by public auction or private treaty, and any loss occasioned by such re-sale together with all expenses attendant thereon, or arising under these conditions shall be paid for by the defaulter and be recoverable as and for liquidated damages. This condition is however without prejudice to the right of the Auctioneers to enforce the contract made at this sale if they think fit.
10. Any Notes for Purchasers and Catalogue Glossaries will be construed as Conditions of Sale.
11. The Auctioneers shall be the sole Arbitrators in all matters of dispute relating to those conditions both as between the seller and the buyer and between the several bidders and buyers and their determination on all matters shall be final and binding on all parties concerned.



How to find us



By Road

From whichever direction you approach Grantham, you can find us if you observe the following rules: Follow signs for Town Centre. Follow signs for Railway Station. At the roundabout leading to "Station Road", continue around to a double viaduct/ railway bridge. Take the right hand arch which leads into Old Wharf Road.

The Salerooms are the first building on the right. There are parking and loading bays in front of the premises.

By Train

The auction house is situated very closely to the Railway Station, which is served by the East Coast Main Line. Trains run approx. every 20 minutes from Kings Cross.



Established 1900
-GOLDINGS-
AUCTIONEERS & VALUERS

Golding Young & Co., Old Wharf Road, Grantham, Lincolnshire NG31 7AA
Telephone: 01476 565118 Fax: 01476 561475 Email: enquiries@goldingyoung.com