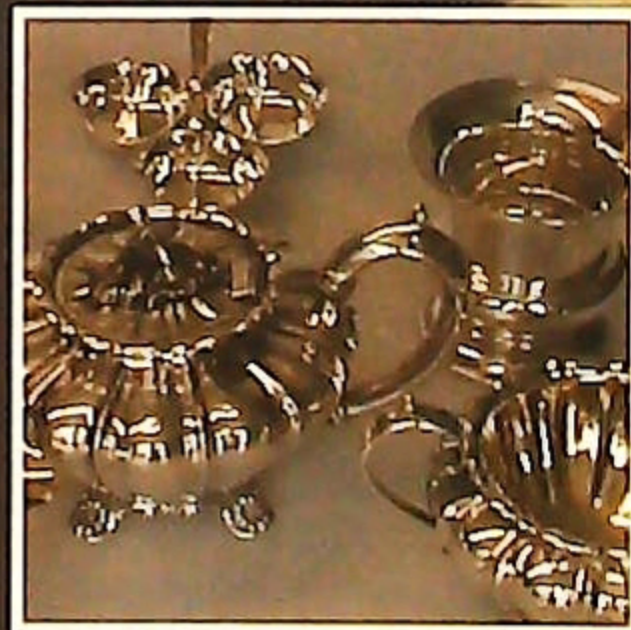


# GOLDING YOUNG • 1900

CHARTERED AUCTIONEERS & VALUERS Commercial Asset Agents • Arts & Antiques Surveyors

## CATALOGUE SALE AUGUST 2004







Lot No. 29



Lot No. 49



Lot No. 101



Lot No. 150



Lot No. 121



Lot No. 157



Lot No. 159



Lot No. 169



Lot No. 170



# GOLDING YOUNG ◆ 1900

CHARTERED AUCTIONEERS & VALUERS Commercial Asset Agents ◆ Arts & Antiques Surveyors

Upon instructions from over 150 private and professional vendors  
from throughout the region.

GOLDING YOUNG & CO will sell by AUCTION

## ANTIQUES, WORKS OF ART AND COLLECTORS ITEMS

WEDNESDAY 4th AUGUST 2004 at 10am

Lots 1 - 160H	Furniture
Lots 161 - 239	Pictures
Lots 239A - 300	Miscellaneous Collector's Items I
Lots 301 - 400	Silver, Jewellery and Bijouterie
Lots 401 - 583	Glass and Ceramics
Lots 584 - 700	Miscellaneous Collector's Items II
Lots 701 - 703	Vehicles

*Lot enquiries*

Suki J Burnett A.N.A.V.A.  
Jan L Squires P.J.Gem.Dip, F.N.A.V.A.  
Colin R Young M.R.I.C.S., F.N.A.V.A.

*Accounts enquiries*

Mary Rice-Johnston

**VIEWING:**

Online at [WWW.GOLDINGYOUNG.COM](http://WWW.GOLDINGYOUNG.COM) from Saturday 31st  
and in the saleroom on Sale week  
Monday 2pm to 5pm, Tuesday 2pm to 7pm,  
Saleday 9am to 10am.

*Front cover illustration Lot No. 592*

**Golding Young & Co.**

Old Wharf Road, Grantham, Lincolnshire NG31 7AA

Telephone: 01476 565118 Fax: 01476 561475 Email: [enquiries@goldingyoung.com](mailto:enquiries@goldingyoung.com)



**RICS**

**Buyers Hotline: 01476 575202**

For lot enquiries and commission bids viewday and saledays only.



**Whatever you are thinking of selling**  
**GOLDING YOUNG HAS THE AUCTION SOLUTIONS**

Entries welcome at all times except Saleday.  
Antiques Valuation Days ^ Every Tuesday 2pm to 6pm.

For details of all forthcoming sales

visit our website or call for our 2004 Calendar

**THE BARGAIN  
HUNTER'S SALE**

*The Sale for De-Cluttering*

Clear out your sideboards,  
jewellery boxes, attics & cellars.

*Closing Date for Entries: 20th August*

**8th September, 2004 at 10am**

*VIEWING:*

Monday 2pm to 5pm,  
Tuesday 2pm to 6pm & Saleday from 9am to 10am

**THE CATALOGUE SALE**

Your Market Place

for fine antiques, works of art, jewellery,  
silver, ceramics, glass, books,  
clocks, furniture  
and all fields of collectors' items.

**An Important 3 day Sale for November  
with the residual contents of a  
North London residence**

*Closing Date for entries strictly 1st October  
due to the cataloguing workload.*

Held quarterly, these sales include select items that need  
specific and direct marketing through our select mailing  
list & databases.

Up to 200 vendors selling items to a  
Worldwide Audience via The Internet.

1st, 2nd & 3rd November

Online at [WWW.GOLDINGYOUNG.COM](http://WWW.GOLDINGYOUNG.COM)  
from Wednesday 25th

*VIEWING:*

Friday 29th 2pm to 6pm, & Saleday from 9am to 1pm,  
Monday to Wednesday 9am to 10.30am strictly.

Catalogues £5 each by post, annual subscription £20

**THE COLLECTIVE SALES**

Your Market Place

for Victorian, decorative and  
second-hand furnishings,  
household and personal effects.  
Surplus business assets, stock-in-trade,  
plant, machinery & equipment

Every two to three weeks we hold sales of over 600 mixed lots  
received from Property Clearances and vendors of single items.

Over 120 vendors sell with us every sale and over 500  
are registered to buy.

**NEXT SALES: 11th + 25th August**

The sale on the 11th has a good selection of Victorian  
furniture and decorative collectables.

*VIEWING:*

Tuesdays 2pm to 6pm & Saleday from 9am to 10am

**GOOD NEWS on PARKING**

**The Car Park at the Cattle Market has  
Re-Opened!**

**VALUATIONS**

**Free Antiques Auction Advice**  
Every Tuesday 2pm to 6pm in Grantham

and at

**THE NEW ENGLAND HOTEL**  
Wide Bargate BOSTON  
Friday 6th August - 9.30am and 12 noon

**HOURS of BUSINESS**

Monday to Friday 9am to 1pm & 2pm to 5pm  
Entries welcome at all times except Saleday

**PROPERTIES CLEARED - TRANSPORT ARRANGED**  
**VALUATIONS FOR ALL PURPOSES**



## IMPORTANT NOTES FOR PURCHASERS

- PAYMENT:** Must be made in full immediately after the Auction. The following methods of payment are acceptable.
  - Cash
  - Bankers Draft
  - Building Society Cheque
  - Cheques (accompanied by a valid card.)
  - Debit & Credit Cards (the latter subject to a charge of 2% + VAT).

### PAYING BY CHEQUE?

If you are not known to the Auctioneers and wish to pay by cheque above your guarantee card limit WE WILL RETAIN THE GOODS until it has been cleared (7 days). There will be NO EXCEPTIONS to our policy. To avoid UNDUE EMBARRASSMENT for yourself or to our staff, please do not ask for preferential treatment. If you wish to clear goods immediately bring a letter from your Bank or a suitable guarantor reference.

- BUYERS PREMIUM** of 15% (with a minimum of £1 per lot) is payable on all lots, plus VAT.
- REMOVAL OF PURCHASES:** Goods must be collected as soon as they are paid for, and in the 2 Working Days following the sale. If goods are not collected on these days we reserve the right to charge £1 per lot per day thereafter.
- COMMISSION BIDS:** If you are unable to attend this or any of our future sales we will be pleased to bid on your behalf. We always purchase at the lowest possible price, subject to other bids and reserves.

All bids must be handed to the office on an official form. It remains the responsibility of prospective purchasers to contact GOLDINGS to confirm whether their bids have been successful.

- TELEPHONE BIDS:** There are inherent dangers with this practice, therefore all such arrangements are made entirely at the bidder's risk. Telephone bids will only be accepted if the lower estimate is £500 or above. For lots with a lower estimate below this figure Commission Bids Only will be accepted.
- SMOKING** is not permitted in any part of the Saleroom.
- REFRESHMENTS** will be available Saleday.
- ACCOUNT TRANSFER** will not be recognised after the sale. If any lots are purchased for another person, this must be declared at the fall of the hammer.
- ESTIMATES.** Our Auctioneers will be available during viewing to give guidance on your prospective purchases.



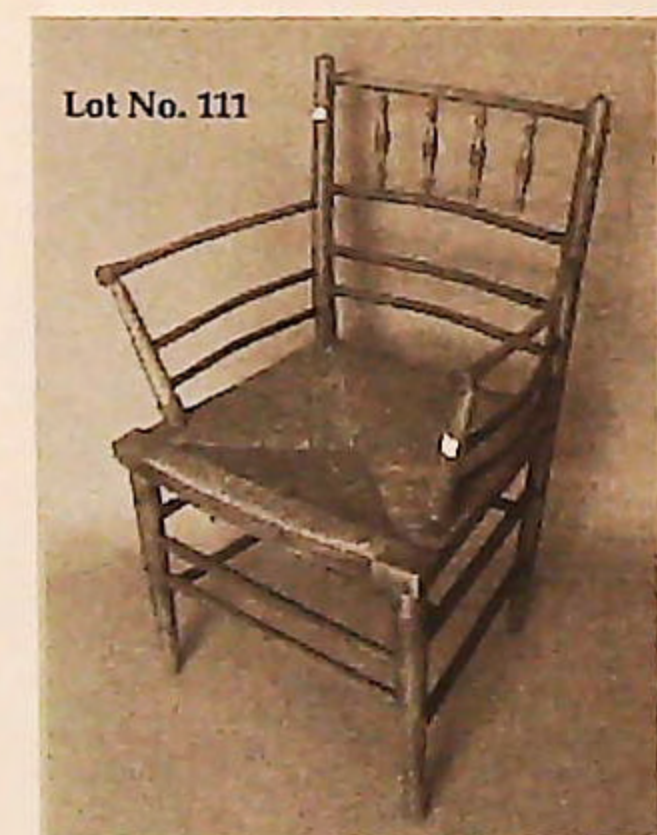
Lot No. 1



Lot No. 15



Lot No. 17



Lot No. 111



Lot No. 19



Lot No. 122

### GLOSSARY

- Generally: 'As Found' (AF). This term indicates the lot has some damage. Its absence does not indicate that the lot is free of defect. All lots are SOLD AS SEEN.
- Paintings: 'Signed, initialed, monogrammed' - This refers to the present state of the work and is not an attribution.
- Books and printed matter: These items are not sold subject to collation and are not returnable once removed from the premises.
- Silver & Jewellery: Weights given are approximations given by basic instruments.





Lot No. 162



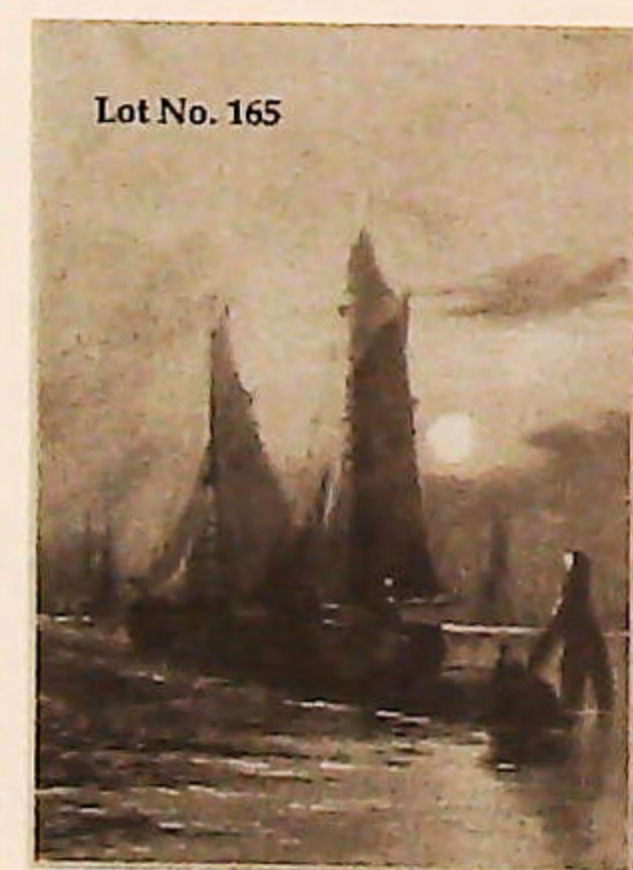
Lot No. 158



Lot No. 131



Lot No. 163



Lot No. 165

## CONDITIONS OF SALE

1. These Conditions together with any Notices to Purchasers are the only terms and conditions subject to which Golding Young & Co ("the Auctioneers"), as agents for the Vendor will sell goods to a purchaser ("the Bidder") and all other conditions, whether express, or implied at common law or by statute as are capable of lawful exclusion are hereby excluded.
2. The highest bidder shall be the buyer. The Auctioneers reserve the right of regulating the biddings; of rejecting any bid; and of bidding for, withdrawing, consolidating, dividing or altering the order of lots.
3. The purchase money for each lot with the usual commission of 15% (with a minimum of £1 per lot) plus VAT at the current rate shall be paid at the fall of the hammer (if required). Each lot at the fall of the hammer shall be at the sole risk and expense of the buyer, and shall be paid for and removed immediately after the conclusion of the sale, but no lot shall become the property of the buyer, or be removable until paid for, and if taken away in contravention of these conditions without an order for removal signed by the Auctioneers, they shall have power to seize the same by their servants or agents, or otherwise, or the Auctioneers may recover either the lot sold or the price thereof (at their option) by action at law.
4. No contra account of any description whatever will be allowed to the buyer as a set off, and payment for each Lot shall be made to the Auctioneers or their clerk only, and a buyer paying by cheque must give satisfactory references.
5. For all purposes of this sale the Clerk of the Auctioneers shall be deemed to be the agent of both seller and buyer.
6. A bidder shall not be allowed to retract his bidding after the fall of the hammer, and he shall give up his full name and address if required. The Auctioneers will not recognise the transfer of any lot from one buyer to another, nor make any alteration in the sale book in respect thereof.
7. The Auctioneers are acting only as agents, and give no personal warranty as to the condition, quality or authenticity of any chattels offered for Auction. Any catalogue description is given merely as guide to purchasers, any description can be changed from the rostrum before the lot is sold. If a purchaser buys without previous inspection he will do so at his own risk.
8. Notwithstanding any other terms in these Conditions, if within 7 days of the Sale a purchaser gives notice in writing that a lot is a deliberate forgery, with supporting factual evidence, the Auctioneers may rescind the transaction. The burden of factual proof lies with purchaser, mere opinions will not satisfy. This benefit is not assignable.
9. If any buyer neglect or refuse to comply with the above conditions or any of them, his deposit money (if any) shall be forfeited, and the lot uncleared may, at the option of the Auctioneers, be resold without notice by public auction or private treaty, and any loss occasioned by such re-sale together with all expenses attendant thereon, or arising under these conditions shall be paid for by the defaulter and be recoverable as and for liquidated damages. This condition is however without prejudice to the right of the Auctioneers to enforce the contract made at this sale if they think fit.
10. Any Notes for Purchasers and Catalogue Glossaries will be construed as Conditions of Sale.
11. The Auctioneers shall be the sole Arbitrators in all matters of dispute relating to those conditions both as between the seller and the buyer and between the several bidders and buyers and their determination on all matters shall be final and binding on all parties concerned.



## FURNITURE

1. A 19thC figured mahogany chest, of two short and three long drawers, having a cross banded and satinwood line inlaid top, the drawers with ebony detail and brass handles with stamped back plates and on splay bracket feet. 40" wide.
2. A 19thC mahogany bow front chest, of two short and three graduated drawers each with cockbead moulding and turned knobs and on splay bracket feet. 41" wide.
3. A 17thC oak side table, with rectangular moulded top, frieze drawer with brass drop handles, turned uprights and square framing. 32" x 18".
4. A George III bow front figured mahogany corner cupboard with satinwood stringing, the two cross banded drawers with ivory escutcheons enclosing three shelves. 25¼" wide.
5. A Victorian mahogany wind out dining table, having a moulded edge over plain frieze on sturdy baluster turned legs with brass castors and five extra leaves. Measuring in total 159" extended x 54".
6. A George II style wing armchair with arched back, outswept arms, and on square framing, upholstered in a pink figured Dupion.
7. A Gainsborough style open armchair, with mahogany framing, upholstered with floral crewel work, c.1900.
8. A pair of 18thC style barrel backed upholstered armchairs, with squab cushion, on stained square legs, covered in green figured Dupion, c.1900.
9. A Liberty style Mushrebiyeh three fold confessional screen, c.1890 each panel 31" wide.
10. A late 19thC mahogany Aesthetic mirrorback sideboard, the galleried back with bevelled oblong glass, full width shelf and embossed lower panel, the rectangular top over an arrangement of drawers and cupboards, the doors with patera detail, 72" wide.
11. A Regency mahogany fold-over card table, the rectangular top over a shaped frieze, the fluted baluster pedestal on three scrolling down swept legs, ceramic castors, 31¼" wide. (some damage and losses).
12. A 19thC mahogany chest, of two short and two long drawers, the top with rounded front corners and moulded edge, turned knobs and on plinth base. 47¼" wide.
13. A Victorian mahogany metamorphic snooker and dining table on turned legs. 5'3" x 3'.
14. A Victorian figured mahogany pedestal sideboard, the half-back moulded with C scrolls and carved with foliage, the oblong top over three frieze drawers, the two pedestal cupboards with inset panels, one with cellarette drawer, 60" wide.
15. An Edwardian mahogany cabinet, with a pagoda top over single glazed door, with oblong glazing bars, enclosing three velvet lined shelves, flanked by two open galleried shelves, with four cross banded narrow drawers beneath, on cabriole legs and pad feet. 59½" high, 33¼" wide.
16. A William IV rosewood work table, having a rectangular fold-over top, over a frieze drawer and velvet covered sliding well, supported on a Y shape pedestal and quatrefoil scroll base, 22" wide.
17. A late Victorian mahogany wine cooler, the slightly domed top with foliate cast fixed handle, the bombe body with foliate corners, applied motif and fixed handles to each side, on ogee bracket feet. 18¼" wide.
- 17A. A Victorian bamboo occasional table, with an octagonal top, 18" wide.
18. An early 19thC mahogany bow front chest, the top with satinwood bound edge, over two short and three long graduated drawers, each with cockbead moulding and later handles, on later veneered splay feet. 40" wide.
- 18A. A chess board table, supported on a panelled column and cruciform base, 18" square.
19. A Jacobean oak chest of drawers, the moulded edge top over four full width drawers, the second of double depth, each with applied bosses with inset panels, flanked by bobbin turned moulding, on later bracket feet, 37¼" wide. (crack to top)
20. A Victorian mahogany bow front chest of two short and four long drawers, each with cockbead moulding and later handles, on splay bracket feet 45¼" wide.
21. An early 20thC mahogany cross banded Wellington chest, with seven drawers, each with turned knobs, locking pillar to the right, plinth base and bracket feet, 30" wide.
22. An early 19thC mahogany tilt-top tea table, the oblong top on baluster turned pedestal and three down swept legs, 27" x 22¼".
23. An early 19thC flamed and mahogany clerks or school desk, with sloped top boxed compartment, single drawer with brass loop handles and turned legs. 32" wide, 28" deep.
24. A George III oak chest, of two short and three long graduated drawers, with oval pressed backplate handles and bracket feet. 37" wide.
25. An early 19thC oak and mahogany crossbanded cabinet, with a segmented pediment over two doors with inset panels, flanked by reeded side columns, the interior with three shelves, 48" wide. (Previously the top part of a bureau bookcase).
26. A 19thC mahogany open bookcase, with an oblong top over three adjustable shelves, plinth base, 46½" high, 48" wide.
27. A pair of white painted cast iron garden urns, of campana shape, with egg and dart everted rims, half lobed bodies, on circular socle, square bases and on square tapering pedestals, 42" high, 22" dia.
28. A 19thC oak mule chest, of plain form, with two lower drawers over hinged top, bracket feet, 43½" wide.
29. A William IV figured mahogany breakfast table, the circular top with twelve particularly well matched radial veneers, the edges applied with bobbin half round moulding, on a tripartite foliate, volute and fan moulded pedestal, platform base and conforming feet, brass castors. 50½" dia.



30. An early 20thC mahogany Sutherland table, the oblong top with canted corners, over railed end standards and splay legs 23¼" x 30".
31. An ash framed basinette, with rail sides, and curtain support modelled as a bird's head, and supported on turned end uprights joined by a galleried stretcher, 49" long.
32. A 19thC mahogany tilt-top table, the circular top with moulded edge, on baluster twin pedestal and three splay legs. 35" dia.
33. A 19thC mahogany framed rocking cradle, with bergere cane panels, on barleytwist uprights with scroll legs, joined by a conforming stretcher, 38" long.
34. An early 20thC mahogany and crossbanded display cabinet, having a mirrored superstructure, over two glazed doors with Art Nouveau stained glass panels, the interior fitted with three velvet lined shelves, on tapering legs with brass castors, 70" high, 35" wide.
35. A 19thC mahogany hanging corner cupboard, the single door with moulded glazing bars, the interior with three shaped shelves. 28" wide.
36. A 20thC half round two door cabinet, decorated in the Chinese manner with polychrome and gilt figural landscapes within gilt lines against a black ground, on four cabriole legs 30½" wide.
37. A 20thC bureau, decorated in the Chinese manner with polychrome and gilt figural landscapes within gilt lines against a black ground, on four cabriole legs.
38. A William IV rosewood library table, with rounded rectangular top, sectioned with two adjustable reading slopes, frieze drawer, taper turned pillar, quatrefoil base with bun feet 38" x 23".
39. A 19thC mahogany toilet mirror, the oval glass supported on scroll uprights, the bow front base with three frieze drawers, on bracket feet. 22¼" wide.
40. A George III mahogany cabinet on chest, the upper part having 2 atragal glazed doors, over 2 short and 3 long graduated drawers, with later knob handles and bracket feet. 38" wide, 6' high.
41. A 19thC mahogany cabinet, of slender proportions, with a moulded and dentil cornice over a single door with geometric glazing bars, the interior fitted with four shelves, 52¼" high, 33" wide, 9¼" deep.
42. A Victorian ebonised and line inlaid cabinet, the single glazed door encircled by gilt metal mounts and Sevres style porcelain oval plaques, the interior fitted with two velvet lined shelves, on bun feet, 31½" wide (previously with a shelf superstructure).
- 42A. A Victorian mahogany chest, of two short and three long graduated drawers with brass loop handles, on bun feet. 42" wide.
43. A Regency rosewood card table, with cross banded canted rectangular folding top, marquetry frieze, turned and nulled pillar on circular base co-joined by four sabre legs with cast acanthus toes and castors 36" wide.
44. An early 20thC walnut bureau plat, the shaped oblong crossbanded top with strapwork inlays to each corner, and oval leather writing surface within a three quarter pierced brass gallery, over a full width frieze drawer, on cabriole legs with gilt metal shoulders and sabots, 34" wide.
45. A George III mahogany chest, the oblong moulded edge over three full width drawers, each with cockbead moulding and brass handles, on bracket feet, 33¼" wide.
46. SPARE LOT
47. A late Victorian figured mahogany two door wardrobe, with a moulded and dentil cornice, the doors with matching inset panels, hanging rail to the interior, on bracket feet, 38½" wide.
48. A Victorian mahogany double wardrobe, with moulded cornice, two arch doors on plinth base, 42" wide.
49. An extensive late 19thC satinwood Aesthetic bedroom suite, comprising: a breakfront 3 section wardrobe, with open pediment centred by an urn finial, the centre door with bevelled mirror, the interior with three press shelves over four drawers, flanked by doors with fielded panels and paterae detail, 83" wide; a dressing table with full length mirror suspended between two pedestal cupboards; a washstand with marble top and half back with a set of twelve Minton's "Shakespeare" tiles after John Moyr Smith (each 5¼" square), a double bedstead, bedside cabinet, chest of drawers, tallboy and commode (8).
- 49A. An early 20thC mahogany full size billard table by Thurston & Co., on turned legs, together with a Hartley shade, billiard cues etc.
50. An 18thC French fruitwood cupboard, of slender proportions, the single door with shaped fielded panels and pierced metal escutcheon, the interior with shelves, panelled sides, 81" high, 15" wide.
51. An 18thC French sycamore armoire, with a projecting cornice over two doors, each with bracketed inset panels with shell cresting, pierced metal escutcheons, with shaped apron, on stile feet, 62" wide.
52. A Queen Anne style walnut corner cupboard, with burr quarter veneered door to top and base on bracket feet 26" wide, 75" high.
53. A 20thC mahogany standing corner cupboard, with dentil cornice, over two glazed doors, the interior fitted with two shelves, the lower section with two doors, each with moulded panels, on bracket feet. 35" wide.
54. A late 19thC mahogany two drawer bedside cabinet, with cockbead moulding and brass handles, on bracket feet, 25" wide.
55. A late Victorian walnut partner's desk, with inset leather writing surface, each side fitted with three frieze drawers and three further drawers to each pedestal, on plinth base, 61" wide.
56. A George III mahogany serpentine chest, of four graduated drawers with replacement knob handles and reduced feet 41" wide.
57. An 18thC oak three panel joined chest, the front having arcaded frieze over paterae carved panels, between chip carved muntins, on channelled stile feet. 49¼" wide.
58. A walnut open armchair, of Queen Anne influence, with vase splat carved with paterae and inlaid with scrolls, outswept arms, solid seat, on cabriole legs with carved knees.



59. A Victorian walnut ladies chair, the spoon shape back with button upholstery, serpentine seat over plain apron, on front cabriole legs with foliate knees, knurled and peg feet.
60. An early Victorian mahogany library chair, the rounded padded back supported by moulded panel and foliate carved uprights and similar terminals, on lobed baluster front legs with ceramic castors, upholstered in tan leather cloth.
61. A 19thC canvas sea chest, with domed cover, banded in oak, studded initials to the cover 35½" wide.
62. A mid 20thC light elm coffer, with four panel rising cover, over a panelled front with nulled and channelled framing, 55" wide.
63. A George III style mahogany serpentine fronted sideboard, with a centre drawer, flanked by a deep drawer and single door cupboard, all with box crossbanding and ebony stringing, on tapering legs with spade feet, 48" (crack to top).
64. A Victorian mahogany marble top washstand.
65. A Victorian rosewood work table, of octagonal form, with a fitted interior and well, on triple downswept legs, 17" wide. (Some moulding loss to lower edge).
66. An early 19thC yew and elm low back Windsor chair, with spindleback, saddle seat and with crinoline stretcher.
67. A 19thC mahogany torchere, with circular tray top above a foliate and wrythen carved column and supported on four downswept legs. 48" high.
68. A 19thC oak hall chair, with cartouche back over dished seat and with conforming front supports.
69. A 19thC mahogany campaign commode, of box form with cantilever arms supported by a lift top/back, the interior fitted with a flushing mechanism and blue and white transfer printed W.C. 26" wide.
70. A 19thC dressing table stool, with a rectangular upholstered seat, on four baluster and turned legs.
71. A Victorian open armchair, with an upholstered shaped back, mahogany scrolling arms with turned uprights, serpentine front seat and turned legs terminating in brass cups and castors. NB. This lot is being sold in respect of a matter in the County Court and will be sold WITHOUT RESERVE.
72. A set of five William IV mahogany dining chairs with slightly curved foliate carved top rails, moulded tie rail, overstuffed seats, on turned and lobed front legs together with a single dining chair with plain top rail, and on turned and lobed tapering front legs.
73. A set of 4 Regency ebonised dining chairs, the splayed open backs with pierced vase splat and gilt with flowers and insects, over woven raffia serpentine seats, on similarly decorated rails and ribbed cabriole legs.
- 73A. A set of six African teak open armchairs, each with high panelled backs, angled arms, padded seats over shaped apron, on square framing.
74. A Rossetti style Faux bamboo open armchair with spindleback and rush seat.
- 74A. A pair of late Victorian mahogany salon chairs, the serpentine top rails with shell cresting, over floral and rail pierced splat and scroll tie rail, padded and buttoned overstuffed seats with serpentine fronts, on cabriole legs with foliate detail.
75. A set of six Victorian rosewood balloon back dining chairs, the backs with carved foliate detail, pierced and scroll tie rails, velvet covered serpentine seat and on French cabriole legs.
- 75A. A George III style mahogany open armchair, having an upholstered arched back, outswept arms with volute terminals, the overstuffed seat above square framing.
76. A Victorian nursing chair, having a rectangular upholstered back panel, supported by turned and fluted uprights, overstuffed seat and on turned and fluted legs with applied bosses. NB. This lot is being sold in respect of a matter in the County Court and will be sold WITHOUT RESERVE.
77. A George III mahogany dining chair, with drop in seat.
78. An early 20thC two seater sofa with drop end.
79. A 19thC Empire style mahogany framed sofa with shaped back, upholstered scroll, outwardly scrolling arms, and on splay legs. 79" wide.
80. A Continental sofa, in the Regence style with oak framing and brass ornament, upholstered in blue striped Dupion 74" wide.
81. An early 20thC George III style two seater sofa with high shaped back and wing arms on cabriole legs. 60" wide.
82. A 19thC George II style wing armchair, outswept arms on mahogany legs with later brass castors.
83. A 19thC oak dropleaf dining table with oval flaps and on barleytwist supports joined by plain stretchers. 38" x 34½".
84. A Regency style oak sofa table with oblong flaps, two frieze drawers with lion mask and ring handles and on twin end standards with reeded and splay supports 70" x 22".
85. A 19thC mahogany jardiniere with circular top supported on three turned uprights joined by a circular undershelf, on triangular platform base. 20½" dia. 30" high.
86. A Victorian papier mache tilt top table, the oval top painted with a spray of flowers within mother of pearl and gilt swag framing, on turned pedestal and circular base with three trefoil feet.
87. A 19thC Chinese hardwood stand, the rectangular top with pierced apron, on rectangular legs joined by undershelf. 16" x 12".
88. An early 20thC Chinese tea table, of rectangular form painted in iron red, green and yellow, decorated with celestial dragons and Shou characters. 13" x 26¼", 12" high.
89. A 20thC two tier dumb waiter with piecrust edges and on lobed and turned upright and tripod base. 30½" high.
90. A 19thC mahogany dropleaf dining table with oval flaps, and on tapering legs with pad feet. 49" x 45".



91. An early 19thC mahogany commode of bow fronted form, the rising eared top above a single door with diamond panelling and centre brass handle, dummy drawer below, flanked by foliate and wrythen half round pillars. 25" wide.
92. An early 19thC figured mahogany breakfast table, the circular top with gadroon moulded edge, narrow frieze with bead mouldings, supported on a tapering rectangular pillar with bead and reel corners, terminating in a swept plinth with conforming moulding, supported on an inverted platform base with applied rondels and on lobed feet. 49" dia.
93. A George III mahogany tray top commode with tambour sliding door and supported on channelled rectangular legs. 19" wide.
94. A 20thC mahogany wine table with a circular pie crust top, supported on three slender turned uprights and a tripartite base on three downswept legs. 11" dia. (Losses to rim).
95. A 19thC mahogany Pembroke table, having twin flaps with rounded corners, frieze drawer with brass handles and opposing dummy drawer on slender tapering rectangular legs. 40" wide x 19¼".
96. A mahogany magazine and book trough, of three tiers, shaped sides with brass carrying handles 21" wide.
97. A Victorian ottoman stool of rectangular tapering form with moulded framing on bun feet. 20" x 21"
98. A stained wood firescreen of rectangular form hung with a bead and woolwork panel, 21" wide.
99. A Victorian walnut whatnot, of rectangular form with canted front corners, the top shelf having a three quarter pierced gallery, the shelves supported on ring turned and turned uprights, the lower shelf over two frieze drawers and on ceramic castors. 44" high, 24" wide.
100. An early 20thC dwarf chest of four drawers, the top with satinwood cross banding. 35" high, 16" wide
101. A 19thC Italian marquetry tilt-top table, the irregular incurving top inlaid to the centre with an ebony and boxwood star, surrounded by scrolling foliage and flowers, on a barleytwist pedestal with conforming platform base and four lion paw feet 25½" x 18½".
102. An early 20thC stained wood boot pull, with turned framing, 32" high.
103. An early 20thC stained beech pot cupboard, with half back, inset panel to the single door, on plinth base, 15½" wide.
104. A 19thC mahogany breakfast table, the circular tilt-top with reeded edge, supported on a vase turned pedestal with three downswept legs terminating in claw and ball feet, 44" dia.
105. A 19thC gold and black Japanned open bookcase on stand, with an ogee moulded cornice over three open shelves, with full width lower drawer with brass handles, the stand on four straight legs. 65½" high, 43½" wide. (in poor condition).
106. A George III mahogany washstand, with bowl and mug apertures to the top, lower shelf with frieze drawer, on square legs joined by shaped stretchers, 14" x 15".
107. A Victorian towel rail, with curved framing, 24" wide.
108. An early 20thC stained wood three fold towel rail, on trestle supports.
109. A set of six Victorian beech and elm smoker's armchairs with spindlebacks and on turned legs and stretchers.
110. A Regency faux bamboo single chair, with spindleback and rush seat.
111. A Rosetti style elm open armchair, the open spindle back with two tie rails, rush seat and on turned legs joined by stretchers.
112. An early 20thC mahogany open armchair, the rectangular back with pierced and carved splat, downswept padded arms with foliate terminals, serpentine overstuffed seat on tapering legs with spade feet.
113. An early 19th elm ladderback dining chair, with rush seat, on turned legs with pad feet, with baluster turned front stretcher, another with yoke back, rush seat, on plain supports (2).
114. A Regency period open armchair, with an ebonised frame, the back with fish tail horizontal splat centred by gilt metal paterae, flanked by bobbin rails, the downswept arms with bobbin uprights having a woolwork seat, on sabre legs with gilt metal paterae capitols.
115. Three late 19thC ebonised side chairs, the open backs with quatrefoil piercing and bobbin spindles, over cane seats, the ring turned front legs joined by stretchers (one seat damaged).
116. An Edwardian rosewood sofa, the open back inlaid with masks and scrolling foliage over two upholstered panels, the padded arms with paterae terminals, on reeded and turned front legs, upholstered in Regency floral stripe.
117. An early stained beech open armchair, with pierced rail back, and outswept arms, padded seat, on cabriole legs formed by stretchers.
118. A pair of Regency mahogany open armchairs, with channelled bar backs over fan and scroll pierced tie rails, downwardly scrolling arms, loose seats, on sabre legs.
119. A late 19thC oak overmantel with a projecting cornice above a dentil frieze, the panel below carved centrally with stylised flower forms, flanked by tablet panels and scroll brackets. 45½" wide.
120. A set of four Edwardian mahogany dining chairs, the shaped top rail inlaid with paterae within satinwood stringing, over pierced ribbon moulded splats, loose seats, on front cabriole legs.
121. A set of six late Victorian oak dining chairs, with rectangular upholstered backs, overstuffed seats on barleytwist front legs joined by panelled H stretchers.
122. A set of three 19thC walnut framed tub chairs, the reeded top rail with scroll terminals, supported on three reeded and turned uprights, above a solid oak two part seat, on four spirally fluted, turned and channelled legs.
123. A Victorian single chair, with bar back over two bobbin and ring turned tie rails, rush seated, on turned legs and stretchers.



124. A set of three 19thC provincial ash dining chairs, with barbacks, solid seats, on tapering square legs.
125. A 17thC oak three panel coffer with later top. (AF)
126. A 19thC mahogany Pembroke table, the twin flaps with rounded corners, having a frieze drawer and opposing dummy drawer, each with brass swing handles and stamped oval backplate, on square tapering legs. 39" x 32".
127. A 19thC mahogany tilt-top table, with an oval top, supported on a baluster turned pedestal and three downswept legs, 23 $\frac{3}{4}$ " x 19 $\frac{1}{4}$ ".
128. A pair of late 19thC mahogany open armchairs, the backs with pierced splats and inlaid with scrolling foliage and simple flower forms in the Art Nouveau manner, the square arms with rounded terminals inlaid with tulips, padded seat, on square and turned framing.
129. An Edwardian rosewood tub chair with a padded back over a frieze and panels inlaid with urns, foliage and musical instruments, overstuffed seats, on turned and tapering legs.
130. A Victorian Prie-Dieu chair, with original woolwork upholstery, on turned oak front legs and brass castors.
131. A Queen Anne style walnut kneehole writing table, with a sectional leather surface, over an arrangement of five crossbanded drawers with brass handles, on cabriole legs with shell knees and pad feet, early 20thC. 45" wide.
132. An early 20thC mahogany cabinet on stand, with an open dentil moulded pediment, over a peardrop frieze, the two doors with fielded panels, the interior with two adjustable shelves, resting on a projecting stand with conforming apron, with tapering legs and pad feet. 41" wide.
133. A Victorian walnut side cabinet, with gilt metal mounts, the moulded edge top over an inlaid frieze, the single door centred by a Sevres style porcelain plaque painted with flowers, single shelf to the interior, on shaped plinth. 32" wide.
134. A stained pine hanging four tier shelf, with turned finials and uprights, 33" wide.
135. A late Victorian beech and elm smoker's chair, with turned spindles and outswept arms, on turned legs with plain H stretchers.
136. An early 20thC dinner gong, suspended on an oak frame with pierced gallery and with turned uprights, 22" wide.
137. A mahogany pedestal table, the circular tray top supported by a ring turned and baluster pedestal, on tripod base, 15" dia.
138. A George III mahogany hanging corner cupboard, the single panelled door enclosing shelves, 30" wide.
139. A late 19thC stool, with oblong woolwork top, on four turned legs, 18" x 14".
140. A late 19thC ottoman stool, of waisted oblong form with mahogany moulding and on castors, with floral upholstery 20" x 16 $\frac{1}{2}$ ".
141. A 19thC mahogany tilt-top table, the circular top supported by a vase turned pedestal, on triple downswept legs and pad feet, 24" dia.
142. A late 19thC oak coaching chair, the oblong back with a pierced splat and faceted uprights in the Gothic manner, with rail seat.
143. An early 20thC mahogany three tier cake stand, each tier with shaped and moulded rims, 36" high.
144. A mahogany bow front display cabinet, with a gadroon moulded top over a single door with glazing bars and two glazed panels either side, on short cabriole legs with foliate and scroll shoulders and ball and claw feet, 39" wide.
145. A coopered oak and brass bound jardiniere, on cruciform stand, bearing maker's label for R. A. Lister 34 $\frac{1}{2}$ " high, 18" wide.
146. A 19thC oak tilt-top table, the circular three plank top supported by a vase turned pedestal, and on triple downswept legs. 28" dia.
147. A green leather Chesterfield sofa, with button back and seat, on turned legs and ceramic castors.
148. A George III mahogany fall-front bureau, with two short and three long graduated drawers, each with cockbead moulding and brass drop handles, on ogee bracket feet, 45" wide.
149. A Victorian walnut framed open armchair, the padded back with strapwork scrollwork cresting rail, and barleytwist uprights, the padded arms with scroll terminals, above an overstuffed seat with studded and pierced apron, on turned and panelled front legs with brass castors.
150. An early 17thC oak joined chest, the top with a moulded edge over a front panel with blind strapwork moulding, two inset panels and nulled lower frieze, on trestle end supports, 41" wide.
151. A Victorian walnut work table, with moulded and shaped burr veneered lift top, revealing a fitted interior raised on carved taper uprights, co-joined by a turned stretcher and carved scroll legs with brass and ceramic castors. 26" wide.
152. A stained beech stool, with a rectangular loose seat above moulded framing, on four cabriole legs with shell moulded knees and claw and ball feet, 23" wide.
153. A 19thC upholstered armchair, with button back and projecting arms, on giltwood French cabriole legs with applied moulding.
154. An early 20thC armchair, with shaped back, outswept arms and with mahogany framing.
155. A 19thC mahogany pedestal table, the rectangular tilt-top with rounded corners, over a ring turned and turned column with three downswept legs and spade feet 27" x 21".
156. A Regency simulated rosewood single chair, with rope and bobbin turned top rail, over a panelled tie rail with gilt metal paterae to the centre, over a cane seat on ring turned front legs and conforming front stretcher (cane seat damaged), together with a George III style mahogany dining chair, with pierced splats, on channelled tapering legs (2).
- 156A. A set of four stained beech Art Nouveau dining chairs, with moulded top rails over padded back and pierced tie rail, overstuffed seats, on turned legs and ceramic castors.



157. **A George III mahogany cross banded breakfront sideboard**, with a deep centre drawer above a concealed napery drawer, flanked by a cellarette drawer to the right, and a single drawer over cupboard to the left, on ring turned legs, 76" wide.
158. **A 19thC mahogany secretaire**, the faux two drawer slide enclosing a fitted interior over two doors with inset panels, on bracket feet, 35" wide.
159. **An 18thC French Provincial oak chest of three drawers**, with a slightly projecting top, the three drawers flanked by half round pilasters, on stile feet, 43" wide.
160. **A satin beech occasional table**, the oval top with fan staining, on square framing, 24" wide.
- 160A. **A 19thC carved giltwood daybed**, with scroll ends, 30" x 74"
- 160B. **A Victorian walnut marquetry Davenport**, with raised bombe pentray, slope top with fitted interior, four drawer and dummy configuration, turned knob handles, 21" wide.
- 160C. **A pair of George III mahogany carver chairs**, with overrun cresting rails, barback, rush seats and turned legs.
- 160D. **A 17thC and later oak gateleg table**, with baluster legs. 42" x 58".
- 160E. **A Sheraton period mahogany card table**, with demilune folding top, string inlaid grieve and square taper legs. 37" wide.
- 160F. **A Victorian mahogany duet stool**, with tulip carved legs. 39" x 15"
- 160G. **A George I style crossbanded walnut night cabinet**, with serpentine top and drawer over two dummy drawer door, on shell and cabriole legs, bears label of W. Charles Tozer, London. 20" wide.
- 160H. **A Georgian style mahogany library open chair**, with button dralon upholstery.

## PICTURES

161. **19thC School**. Still life of roses, iris, tulips and other flowers, in a classical urn, in a garden setting, oil on canvas. 33" x 24".
162. **J\*\*\* Duton (20thC)**. Hilltop village near Macon, oil on canvas, signed verso, 16" x 13".
163. **C. McKinley (19thC)**. Scottish Highland landscapes, a pair, oil on canvas, signed, 16" x 24" (re-lined).
164. **J W Morris (Style of)**. Sheep in landscape, oil on canvas, 18" x 14".
165. **J xxx Dib xxx**. Fishing Boats at Low Tide and BeCALMED Fishing Boats, a pair, oil on canvas, indistinctly signed, 21½" x 16".
166. **E. Wells Bladen. (19thC)**. The Cobbler, oil on board, signed and dated 1890, 23" x 17".
167. **Armfield (19thC)**. Resting cattle and fowl, in a meadow, farmhouse beyond, oil on canvas, 9" x 12¼".
168. **19thC School**. Cottage interior with figures around a table, on which rests an open jewellery box, a figure hides behind an open door, oil on panel, 8¼" x 7½".
169. **James Stinton (1870-1961)**. Cock pheasant and hen in a landscape, set of four watercolours, signed 3" x 5".
170. **D. W. Haddon**. Study of a fisherman, oil on board, signed, 24" x 16½".
171. **Michael D'Aguiar (20thC)**. Coldstream Guards on the Mall, oil on canvas, signed, 20" x 28".
172. **A. B. Collier (19th/20thC)**. The Tamar, Devon. Summer river landscape with a solitary fisherman on the bank, wooded hills beyond, oil on canvas, signed and dated '99, inscribed verso. 24" x 36".
173. **A. Wheeler**. Stable interior with a grey horse and resting dog, another with a donkey and similar dog, a pair, one signed, oil on canvas. 15" x 20". (Re-lined).
174. **A\*\*\* Birbeck (19th/20thC)**. Summer river landscape with grazing sheep by the meandering river with wild flowers and willows, another, with sheep on a country path, with a pond in the foreground, a pair, signed, watercolour/heightened white, 13½" x 20¼".
175. **Timothy Tebbs**. Tealby, Lincolnshire, 1993, village scene with figures, oil on canvas, artists name and title verso, 16" x 20".
176. **19thC School**. Near Loch E xxx, oil on artist's board, signed with a monogram, 12" x 9" indistinct title verso.
177. **Jas. Brown (19thC)**. Country cottage on the roadside, with a figure on horseback, with cottages nearby, signed and dated 1892, watercolour, 11½" x 16½".
178. **19thC School**. Reclining woman with book, oil on panel, 12" x 16", exhibition label verso.
179. **19thC School**. Figures on a riverside path, with grazing sheep by cottages, oil on canvas, indistinctly signed, 14" x 18".
180. **E\*\*\* H\*\*\* (19thC)**. Study of a young man, dressed in country attire, standing before a classical ruin, signed with initials and dated 1886, watercolour, 15½" x 9½".
181. **George Bishop**. Study of a saddled hunter before a wall, oil on board, signed and dated 1914, 13½" x 17¼".
182. **19thC Italian School**. Portrait of a young boy 15½" x 12", another of a young girl 18" x 11", lithograph
183. **19th/20thC School**. Fishing boats on a choppy sea, oil on canvas, 8" x 12".
184. **19thC School**. Hunting scene, oil on canvas, 8" x 16".
185. **Walter Langley**. Study of an elderly lady, seated at a spinning wheel, signed with initials, charcoal, 16" x 14".
186. **19thC School**. Figures in a winter cottage landscape, oil on canvas, 4¼" x 8½", another, Gypsies in a lakeland landscape, oil on canvas 8¼" x 4¼".
187. **J. E. Grace**. "Summer on a Surrey Common" Watering cattle around a pond, with distant hills, signed, watercolour, 6" x 8¼".
188. **Marek Maruszewski (20th century Polish)** Landscape, - oil on canvas, signed, 29" x 24". inscribed verso Maruszewski Marek, Siedke VI Kasprzaka 1964.



189. **19thC Naive School.** Madonna and child, she holding a rose spray in her right hand, the child holding a scroll inscribed "In Gremio Matris, sedet Sapietia Patris", oil on canvas, 17" x 13½", another, of Christ on the Cross, oil on canvas, 21" x 15" (2).
190. **19thC School.** "View on the Border of Chinese Tartary, Sept. 1847". Figures and horses resting by a temple, in mountainous valley, watercolour/heightened white, 15" x 11".
191. **L. M. Ghose.** Chinese river landscapes, with Sampans and boating figures, signed and dated 1919, charcoal, set of 3. 12" x 19".
192. **Charles J. Payne "Snaffles".** "Once upon a time" sporting and WWI vignettes, colour print, signed in pencil in margin, blind trade guild stamp, image size, 13½" x 19¼".
193. **Charles J Payne.** "Snaffles" Oh! To be in England, Now that April's there (Robert Browning) scene at a polo match, colour print with remarque, pencil signed, image signed 12¼" x 21".
194. **Laurie and Whittle (Publisher).** (i) The Prodigal Son taking leave of his father. (ii) The Prodigal Son revelling with harlots (iii) The Prodigal Son in misery, hand coloured mezzotints, circa 1794, each 13½" x 9½", single frame, (trimmed to image, some lower margin damage) and **19thC School.** Faith and Hope, hand coloured mezzotints, 18thC, trimmed to image, 13½" x 9½", single frame (2)
195. **Henry Alken.** How to qualify for a Meltonian (i) How to go to cover (ii) How to appear at cover (iii) How to ride downhill (iv) How to take your leap (v) How to go thro' an overflow (vi) How to take the lead; set of six, hand coloured etchings, first published 1819, later impressions, plate size 10¼" x 13½", in three frames. Another after Alken - Hunting scene from a panorama, varnished and laid down 4" x 21½" (4).
196. **L\*\*\* Roope. (20thC).** At Boultham Park, Lincoln, summer landscape with water meadows, township beyond, signed and dated 1974, watercolour, 8½" x 13".
197. **L\*\*\* Roope (20thC).** Lincoln. View of the Cathedral over the rooftops, signed, watercolour, 6¼" x 10".
198. **Frederick Brown. NEAC (1851-1941).** He loves me! - He loves me not! Are you afraid? two illustrations, signed, watercolour/ink, 9½" x 6½", singly framed.  
\*Frederick Brown was a Professor at the Slade School of Art between 1892 - 1918.
199. **C. H. Harrison (19thC).** Coastal landscape with rocky headland, signed and dated 1892, watercolour with scratching out. 8½" x 11".
200. **Terry Shelbourne. (20thC).** Ropsley, Lincolnshire, flower seller and villager, houses and church beyond, signed, watercolour, 8" x 11¼"; Patricia Hall "The White Horse Hotel, Dorking, Surrey Ltd." Ed. 184/850, signed, colour print, 6" x 8". (2)
201. **John James Wilson (attrib).** On Scarborough Harbour - moored fishing boats, signed with initials, pencil drawing, 4½" x 6½".
202. **Edmund Morrison Wimperis (1835 - 1900).** A Dorsetshire Pastoral, grazing sheep in a water meadow, signed with monogram and dated '99, watercolour/scratching out, 9" x 13¼".
203. **19thC English School.** Figures conversing amongst the ruins of an Old Abbey, watercolour, 18" x 26".
204. **19thC School.** Evening landscape with sheep on a hillside, oil on artist's board, 13½" x 18½".
205. **J. H. Mole. (19thC)** Summer river landscape with two children climbing rocks, above a winding path, the river beyond in a tree lined valley, signed, watercolour, 12¼" x 19¼".
206. **C. W. Nevinson (After).** Rooks in a winter woodland, reproduction colour print, 28½" x 19½".
207. **19thC Japanese School.** Birds and landscapes, woodcuts with hand colouring, set of four, 8¼" x 10¼". A Mongolian art picture 8" x 5½". After Wendlanden - "Attention", "Contemplation", hand coloured lithographs 8½" x 6¼".
208. **P. Gally (Publisher).** "A new married couple taking farewell of their mother", "A visit to the mother with the grandchild", a pair, hand coloured engravings, 6¼" x 8", another pair, and two further engravings.
209. **Henry Alken.** A Curious Discovery, A Simple Discovery, A Trifling Discovery, and four further from the Discovery Series, hand coloured aquatints, first issued 1816, later impressions 6¼" x 10½".
210. **Barrow (20thC).** Still life of a potted geranium and book, signed, oil on artist's canvas board, 11½" x 7¼".
211. **After Bunbury.** Anglers of 1811, hand coloured etching, 7½" x 10¼", two sporting prints (3).
212. **A Victorian sampler** by Ann Brown, aged 16, worked in coloured threads with alphabets and numerals, and motifs, dated December 23rd 1840, 13" x 12".
213. **After Reynolds.** Lady Louise Manners, The Right Honorable Lady Elizabeth Compton, a pair, coloured mezzotints, early 20thC, 16¼" x 10¼".
214. **19thC School.** Gleaning girl, coloured stipple engraving, 9¼" x 6¼", another, girl with pony, black and white engraving 11¼" x 9½".
215. **Reproduction colour print** of a summer landscape with farmer and cattle on a country lane, 19" x 28½".
216. **19thC School.** Charles George Lynch, of Rugby School ..... head and shoulders portrait, Watercolour, oval 7½" x 5½".
217. **After J. Hatfield.** Ye Anglers Lunche of Ye Olde Blue Cheshire Cheese, set of six humorous black and white engravings, 11¼" x 10".
218. **After Aug. Benard.** The Fine Art and General Insurance Cy Ltd. Bruxelles, coloured print, 19" x 26".
219. **20thC English School.** Still life of summer flowers, in a terracotta vase decorated with putti, oil on canvas, 34" x 24".
220. **David Shepherd.** Plough Team, reproduction colour print, signed in pencil, blind guild stamp, 8¼" x 15½".
221. **David Shepherd.** Roosters, reproduction colour print, signed in pencil, blind trade guild stamp, limited edition 674/850, 8¼" x 15¼".
222. **David Shepherd.** Plough horses, reproduction colour print, signed in pencil, blind trade guild stamp, 8¼" x 15½".





Lot No. 166



Lot No. 168



Lot No. 208



Lot No. 167



Lot No. 173



Lot No. 195



Lot No. 256



Lot No. 308

Golding Young  
308  
4th August 2004



Lot No. 289



Lot No. 257



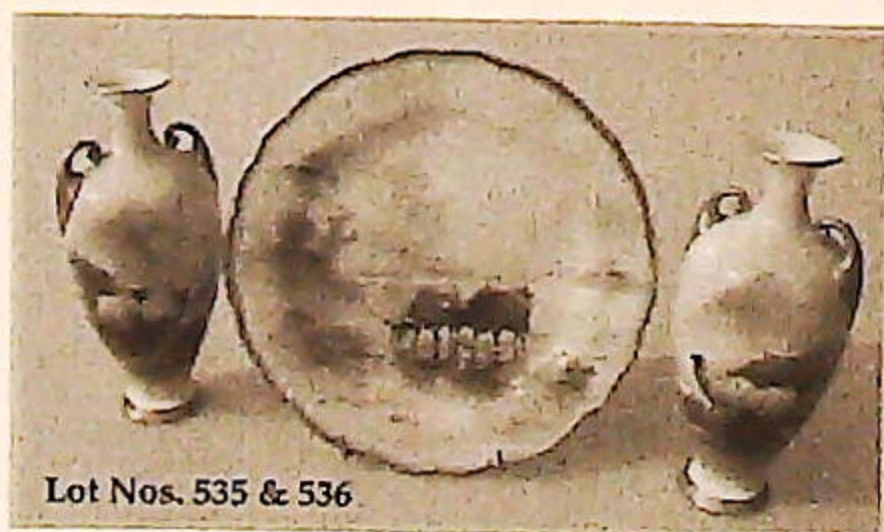
Lot No. 349



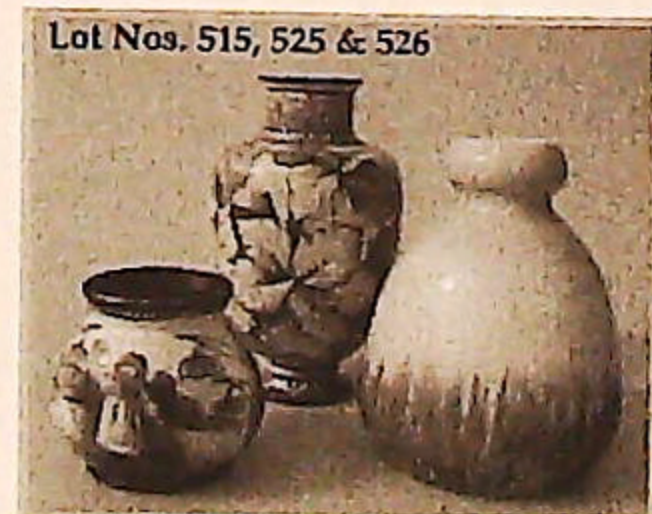
Lot No. 403



Lot No. 258

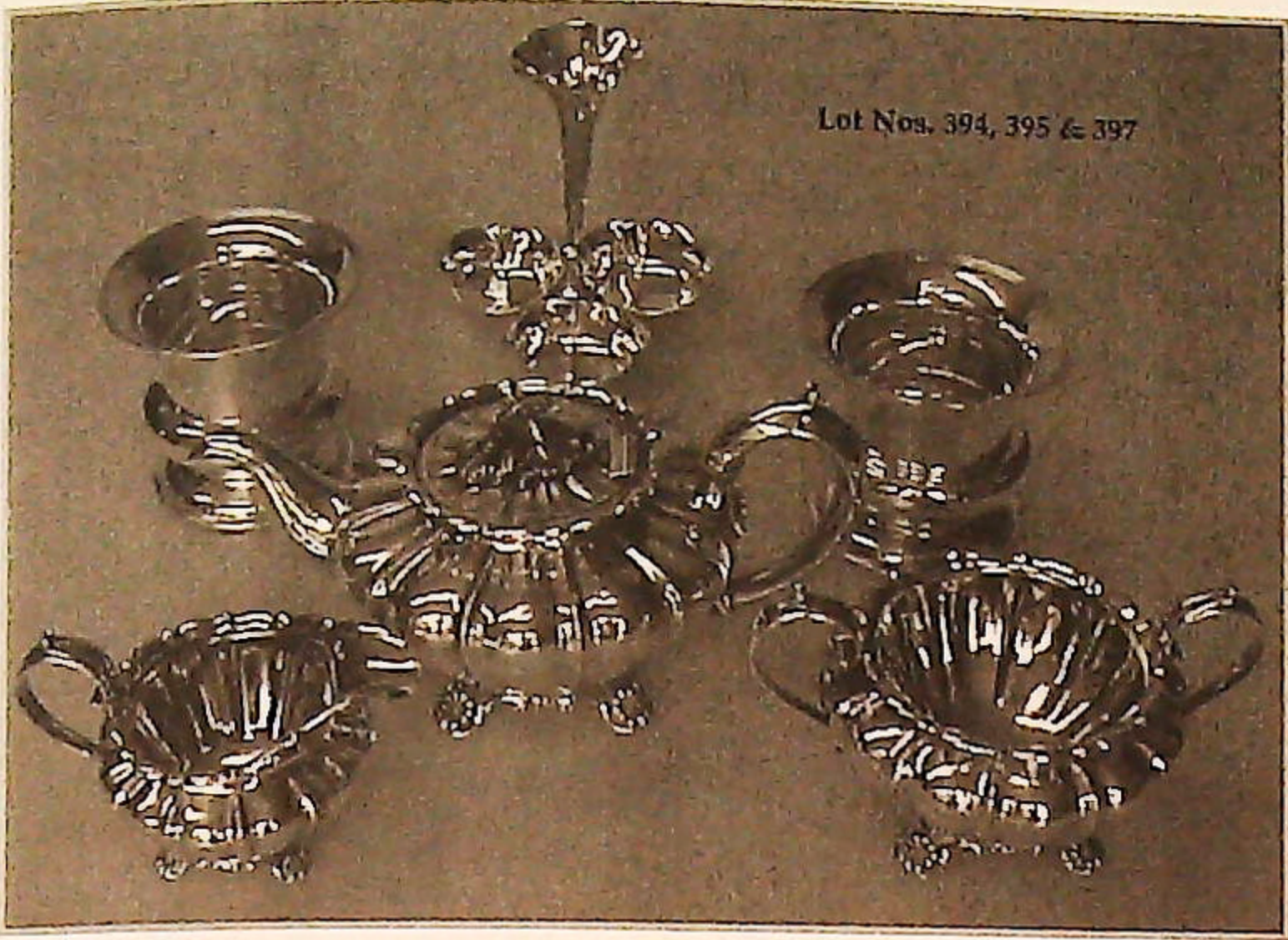


Lot Nos. 535 & 536



Lot Nos. 515, 525 & 526





Lot Nos. 394, 395 & 397



Lot No. 651



Lot No. 507



Lot No. 412



Lot No. 456



Lot No. 532



Lot No. 511



Lot No. 409



Lot No. 538



Lot No. 541



Lot No. 552



Lot No. 559



223. **David Shepherd.** Young Kudu, Young Eland, a pair, reproduction colour prints, signed in pencil, blind trade guild stamp, 7¼" x 10¼".
224. **Norwich School (manner of) 19thC.** Summer river landscape with moored wherries, figures and cottages by the water's edge, oil on panel, 12" x 16".
225. **A.S.C. '34.** Man in a tweed jacket, Man in a grey suit, a pair, caricature studies, pen, ink and wash. 9" x 5".
226. **Early 20thC School.** Three quarter portrait of a young boy, dressed in a three piece suit with rose button hole, watercolour on ceramic tile, 8½" x 6½".
227. **A late Victorian petit-point woolwork embroidery** depicting the baptism of a Royal child, worked in colour threads, predominantly red, blue and yellow, 17" x 14¼" contemporary maple frame.
228. **After Henry Moore (1898 - 1986).** Sculptured objects, 1949, Pub. school prints Ltd. colour lithograph, 19½" x 29½".
229. **L. Knight.** Seated ballerina and assistant, believed to be in the dressing room of the Diaghlev Ballet, pencil, bears signature Laura Knight 1920, bottom right 10" x 7". *NB. This lot is being sold in respect of a matter in the County Court and will be sold WITHOUT RESERVE.*
231. **Kramer.** Portrait of bearded gentleman, pencil, bears signature Kramer, 1916 bottom right. 10" x 8".
232. **19thC School.** Head and shoulders portrait of a youth, facing sinister, oil on canvas, 14" x 12".
233. **Tom Clough (1867-1943).** River landscape with strewn rocks and tree lined banks, mountains beyond, watercolour, signed 29½" x 45½".
234. **Naive School.** Christ with Mary Magdalene and angels, at the foot of the cross, oil on a six part arched panel, 67" x 70½"
235. **A polychrome crystoleum,** depicting a knight releasing a maiden, 15" x 13" including oak frame.
236. **A polychrome crystoleum,** depicting a lady on horseback, 15" x 13" including oak frame.
237. **A court scene picture,** decorated in relief depicting Queen Elizabeth I, in a moulded ebonised frame 16" x 12" overall.
238. **After Casper Netscher.** A Lady reading a letter, at an open window watched by a male admirer, A Lady with parrot and child, at a window, a pair, oils on oak panel, 8¼" x 6¼".
239. **After Gasler (20thC).** A set of reproduction colour prints, landscapes, riverscape, city and organic. 16" x 18¼".
243. **A 17thC brass travelling cartography set,** comprising a pair of dividers, a square, and a folding 12" ruler, the square inscribed ST 1697, in a stamped leather case, 6½".
244. **An early 20thC brass inkwell,** of two handled urn shape with a hinged cover, on an integral circular base, 6" high, 6¼" dia.
245. **An electroplate George II style coffee pot** of baluster panelled shape, with composition handle, 10¼" high, and an Epns campana shape vase with shell, scroll and gadroon border, 6¼" high. (2).
246. **A patinated bronze letter stand,** the rectangular stand mounted with a horse and supporting a sectional figural and flower cast rack, 7½" high, a spelter bust of a Greek soldier, 6¼" high, and a spelter figure of a seated putti, 3" high. (3).
247. **A Meiji period Japanese bronze tripod censor and cover,** with Dog of Fo finial, 9" high.
248. **A polished horn with electroplate mounts,** 11".
249. **An Armand Marseille bisque headed doll,** with brown mohair wig, closing eyes, open mouth, with fully joined composition body, model no. 590/9, 26" high, in fine lawn gown.
250. **A 19thC wax moulded profile of a gentleman,** framed, 10" x 8" overall.
251. **A Welsh miner's brass lamp - Thomas and Williams,** 10" high.
252. **A George III mahogany tea caddy,** with brass loop handles. (no interior).
253. **A 19thC Boule tea caddy,** premiere partie, with cast framework, 2 section fitted interior, 11" wide, 6" high.
254. **A satinwood and ebonised Staunton type chess set,** each piece with weighted bases, the King 4¼" high, (finial missing on black king), in a mahogany box.
255. **An 18thC bronze ink stand,** of rectangular form, the top cast with a female figure kneeling with arms aloft as a pen rest, each well being guarded by half set maidens with cornucopia, 15" x 7".
256. **A 19thC French bronze two-handled shallow dish** by F. Levillain, the well cast in high relief with two Greek figures carrying a wine vessel, signed, and cast by F. Barbedienne, marked to underside, 15¼" over handles
257. **An Art Deco lamp,** modelled as a gilt spelter dancer, her head tilted back and her raised arms holding a circular disc, with pink marbled glass globe, a circular tapering plinth, 19" high.
258. **A 19thC Swiss musical box,** playing six airs, as listed, in a burr walnut, crossbanded and ebonised case, on racket feet, 19½" wide.
259. **Two brass and iron mesh fire guards.**
260. **A 17thC oak box,** of rectangular shape, carved to three sides with foliate scrolls, iron lock plate and later iron hinges, 17" wide.
261. **An Aveling Barford "Invicta" shield** mounted with a brass rearing horse and inscribed ribbon plaque. 16" x 13¼".

## MISCELLANEOUS COLLECTOR'S ITEMS I

- 239A. **An Edwardian oak framed tantalus** with plated mounts and two of three square decanters.
240. **A cut-a-way model of a dolls house,** with fully fitted interior.
241. **A Victorian glass domed diorama,** with a selection of Taxidermy specimens of birds.
242. **An early Edison 'Ediphone' Dictaphone.**



262. A Victorian gentleman's puce leather fitted travelling valise, by the Goldsmiths and Silversmiths Company, fitted with an assortment of silver topped bottles, and ivory handled toilet and stationery requisites with canvas outer cover, all initialed N.C. c.1896.
263. A 19thC mahogany miniature chest of two short and three long drawers, on bracket feet with swept apron, 14½" wide.
264. A giltwood putti wall light, another three light wall fitting and a giltwood carving of a recumbent lion with scrolls (3).
265. A Victorian papier mache oval tray, inlaid with mother of pearl and gilt with flower sprays, 29½" wide.
266. A Victorian papier mache oval tray, inlaid with mother of pearl and gilt with C scrolls and foliage, 23½" wide.
267. A Victorian papier mache tray, cartouche shape, painted to the centre with a spray of summer flowers, within gilt borders, 22¼" x 31".
268. A 19thC metal fender with bead and reel moulding, 55" wide.
269. A Victorian walnut overmantel mirror, of rounded rectangular shape, with foliate mounts and brackets, on moulded plinth, 42½" wide.
270. An early 20thC cast iron fire front, modelled as a house elevation with pierced gallery, 17½" wide.
271. A 19thC pierced brass fender with rounded corners, on compressed bun feet, 49½" wide.
272. A 19thC brass and pierced black metal fender, with ball finials, 41" wide.
273. A Royston Fine Ales enamel advertising sign, wooden frame. 19½" x 122".
274. A cased taxidermy fish, mounted with reeds and against a naturalistic ground, bearing label - Pike. Caught by H. Marriott. July 1940. *The case* 18" x 41½".
275. A cased taxidermy fish, mounted against reeds, bearing label - Bream 3lb. 1oz. Caught by H. L. Marriott, Deep Dyke, Potter Heigham 4th August 1949. Taxidermy label verso H. F. Ashton Taxidermist and Naturalist, 39 Larkman Lane, Norwich. *The case* 15½" x 22". (Facia panel missing).
276. A George VI cavalry sword, the pierced hilt embossed with the Royal cypher, wire bound sharkskin grip and with leather sheath, *blade length*, 33".
277. A 19thC copper coal helmet and shovel, with a fixed and swing handle, each with green faceted glass grips, the shovel with similar handle, 21" wide.
278. A Colabrookedale style cast iron stick stand, cast as a seated dog against a tree, oval base with removable tray, painted white, 28½" high.
279. A Far Eastern temple bell on a stand, the bronze bell engraved with celestial dragons and clouds, suspended from a pierced hardwood stand, 47½" high.
280. An oak font cover, of circular shape having a cruciform mitre with eagle finial, 32" high, 28" dia.
281. A Regency style giltwood mirror, the convex circular glass within a cavetto ball mounted frame with eagle and scroll surmount, and shell foliate apron, 40" x 23".
282. A Victorian ebonised and parcel gilt wall mirror, the rectangular bevelled glass within a foliate moulded frame with bead bezel. 23½" x 13¼".
- 282A. An 19thC Irish parcel gilt and ebonised wall mirror, with oval plate and applied faceted glass decoration. 22" x 18".
283. An 18thC style giltwood and gesso wall mirror, the rectangular glass within a reeded and foliate moulded frame, with lion mask corners, urn and scroll surmount and rams mask, laurel and ribbon swag apron. 47" x 17".
284. An Italian style giltwood wall mirror, the small shaped glass enclosed within an oversize foliate scroll pierced frame with cantilevered surmount, 41½" x 17".
- 284A. A 19thC gilt framed wall mirror, with rectangular plate and moulded frame with silvered floral berry verre eglomise inserts, 24" x 30".
285. A Victorian walnut overmantel mirror, of rectangular shape with rounded corners, inlaid with a dentil border with gilt slip, 15¼" x 27½".
286. A 19thC giltwood and gesso mirror, of quatrefoil shape, with rope and bead moulded borders, having a shell, scroll, flower and pierced trellis surmount, shell flower and foliate apron, 39½" x 20½".
- 286A. An Edwardian mahogany mantel clock, with string inlaid case of architectural form, eight day movement striking on gong, by Jerome, 13" high.
- 286B. A Regency style mantel clock, by Cometti of London, eight day movement striking a bell.
287. A Victorian flamed mahogany bracket clock, with 14" painted dial having Roman numerals and marked "D. Spencer, COVENTRY" over a carved floral and scroll support, moulded plinth with block feet, fusee movement, 22" wide, 23" high.
288. An early 20thC gilt-brass carriage timepiece, with plain enamel dial, inscribed with C and cross scrolls, with original case and key. 4½" high.
289. An Edwardian mahogany balloon time piece, inlaid with brass, mother of pearl and satinwood Art Nouveau motifs 3½" convex enamel dial with Arabic numerals, 7" wide, 10" high.
290. An Aesthetic movement gilt brass table clock, with pierced and blind cast frame in the oriental manner enclosing a 3½" enamel dial with Arabic numerals, 8" wide, 10" high.
291. An Edwardian mahogany mantel clock, with satinwood and harewood shell inlay, 3½" enamel dial with Roman numerals, 6" wide, 8" high.



292. A 19thC mahogany and oak longcase clock, the painted dial with seconds dial, with a landscape to the arch, signed *Pearce, Grantham*, of eight day movement, the hood with swan neck pediment surmounted by three brass orb and eagle finials, turned pilasters, the trunk with satinwood strapping to the frieze, shaped cross banded door flanked by canted corners with acorn terminals. 88" high.
293. A mid 18thC oak longcase clock, having a 12" square brass dial, with silvered chapter ring, seconds dial, date aperture, engraved with foliate scrolls to the centre, mask spandrels and signed *Jos. Tilly, London*, of 8 day movement. The hood with a cavetto cornice over dentil frieze and four barleytwist pilasters, the trunk with a rectangular moulded door, over plinth, 80" high.
294. An early 19thC mahogany longcase clock, the painted dial with seconds dial, gilt floral spandrels, with figural landscape to the arch, of eight day movement, the hood with arched pediment, turned parcel gilt pilasters, the trunk with arched door flanked by canted corner, over a deep crossbanded plinth, 81½" high.
295. A 19thC oak and mahogany longcase clock, with painted dial with seconds dial and calendar aperture, painted with cottages and Roman ruin to the arch, signed *Henry Goodwin, Newark*, of 8 day movement, the hood with a swan neck pediment and turned pilasters, the crossband trunk with triple cusp door, on deep plinth, 83" high.
296. An early 19thC North Country oak longcase clock, with an 11" circular brass dial, engraved with flowers, signed *Edwards B'Castle*, of 30 hour movement, the hood with pierced pediment, turned pilasters, the trunk with a rectangular door above a fielded panel and deep plinth. 84½" high.
297. A Gladstone bag containing medical equipment. Mostly pre NHS including boxed cat gut sutures, catheter introducers, tongue depressor, speculum, intravenous line introducer etc.
298. A pre NHS obstetric kit in case including delivery forceps, ether mask etc.
299. A First Aid attache case containing mid 20thC medical equipment including sphygmomanometer, spirit stove, irrigation syringe, autoclave canister, reflex hammer etc together with a small brown case containing speculum and other equipment.
300. A briefcase containing pre NHS medical equipment, including sphygmomanometers, stethoscope, suturing set, catheter introducers and notebook.
302. A diamond and emerald cluster ring, with an oval central emerald of 6.6mm x 6.2mm surrounded by 14 diamonds, surrounded by 14 emeralds in a basket style setting to a 5 band shoulder shank, all in yellow metal.
303. A parure of Saudi Arabian gold and turquoise jewellery, comprising of a circular pierced and wirework pendant set with a small circular turquoise, matching pendant earrings, bracelet and ring.
304. A pair of ornate filigree Indian ear-rings, set with small red and green stones in yellow metal.
305. An opal set pendant, of stylised floral form, the central opal 20 mm x 15 mm surrounded by precious and semi-precious stones set in leaf shapes intersert with pearls, the whole in yellow metal.
306. An opal set ring, the opal carved with a scarab 12mm x 9mm in a yellow metal setting to yellow metal shank stamped 18ct.
307. A necklace of pearls, possibly freshwater, 63 pearls of average size 5.5 mms dia. to white metal clasp. 41 cm length.
308. A diamond solitaire ring, A fancy coloured pale lemon yellow stone of c.1.1cts, old brilliant cut, claw set in white metal shank stamped PLAT. NB. This lot is being sold in respect of a matter in the County Court and will be sold WITHOUT RESERVE.
309. A Victorian bloomed gold brooch and ear-ring suite, navette shape brooch and round flower head earrings, each set with a single garnet, cased.
310. A 1930's Cyma cocktail watch, rectangular black dial, white metal case to white metal bracelet, inscribed to reverse.
311. A Charles Horner silver Celtic shield shaped brooch, circular with enamelled centre in green through blue to purple. 2cm dia. Hallmark Chester, date rubbed.
312. Three items of Miriam Haskell costume jewellery, being a ribbon twist brooch, a shell shaped brooch with faux pearl drop and a black bead bracelet all marked, together with a black glass necklace.
313. An Edwardian 9ct gold memorial brooch, marquise shape set centrally with a small pink stone flanked by seed pearls, reverse glass missing, Chester 1904.
314. A brooch, in the form of a scorpion, the body being set with variously coloured garnets (5) set in white metal, 2½" long.
315. A Japanese darkwood netsuke, a study of a large snail.
316. A Japanese fruitwood netsuke, a study of a dutchman standing holding his hat.
317. A Japanese blackwood inro, depicting Kwan Yin seated upon her lotus throne.
318. A Japanese ivory netsuke, a study of a portly village dove keeper standing holding his favourite bird upon the back of his hand.

## SILVER, JEWELLERY AND BIJOUTERIE

301. A gentleman's diamond set signet ring, rose cut stone above girdle only, claw set in 18ct gold. Birmingham 1900
- 301A. An Edwardian diamond and sapphire marquise ring, set with three sapphires enclosed by fourteen old cut diamonds. Hallmarks rubbed.
- 301B. A rose gold double flat curb Albert, with a pommel marked 9c and a silver gilt whistle/rattle. (2)



319. A Japanese ivory netsuke, a study of a village elder standing in fine kimono holding a child.
320. A Saudi Arabian gold "peacock eye" pendant set with an oval turquoise cabachon, similar bracelet, ring and earrings.
321. A Japanese ivory netsuke, a study of an elderly Samurai.
322. An 18ct gold brooch, in the form of stylised wings with a tear drop shaped opal suspended below, 10 mm x 6.6 mm with a small diamond set at the apex. London 1993
323. A box link long chain, 54 cms in length with swivel stamped 9, weight 19.6 gms
324. A delicate Belleek rose spray brooch.
325. A green tourmaline and diamond cluster ring, yellow metal shank stamped 18ct.
326. A 9ct gold ladies dress ring, four oval opals in quatrefoil design intersert with five tiny sapphires.
327. Two 9ct gold ladies dress rings of similar pierced design set centrally with a small white stone.
328. A lozenge shaped dress ring in 9ct gold set with nine small opals.
329. A silver and turquoise guilloche enamel pendant by Charles Horner, in the form of an Art Nouveau stylized leaf with curling tendrils.
330. A triple row diamond and sapphire eternity ring, a row of sapphires between two rows of diamonds, all set in white metal to white metal shank.
331. An 18ct gold ruby and diamond set dress ring, alternating diagonally set pairs of eight rubies and six diamonds.
332. A 9ct gold half hoop eternity ring set with tiny white stones.
333. A silver gilt foiled paste set necklace, 38 claw and collet set graduated faceted stones, with tongue and clip clasp, stamped with indistinct marks possibly Russian.
334. A gentleman's bark effect signet ring with square head and wide shoulders, stamped 9ct. 9.4.g.
335. A gentleman's signet ring 9ct yellow gold with oval head with "sun ray" effect set with a small diamond. London 1965. 7.5g.
336. A ladies 9ct gold dress ring set with a central oval opal 8mm x 6mm approx., flanked by pairs of diamonds, mounted estimated weight 0.10ct. each, flanked by pale aquamarines either side, each 6mm x 4mm approx, the whole set in claw mounts with ball embellishments to scroll decorated shoulders. Birmingham 1992, total weight 4.4g.
337. A diamond set stick pin, a floral cluster of ten diamonds, the central diamond of estimated mounted weight 0.12 ct. surrounded by nine small diamonds, all set in yellow metal.
338. A diamond set stick pin, the floral cluster of seven diamonds, the central stone mounted estimate weight 0.10ct., 6 stones of mounted estimated weight 0.02ct - 0.12ct. total, all set in yellow based white metal topped mille grain setting.
339. A ladies dress ring, three oval pale blue sapphires surrounded by small diamonds in plaque form set in white gold to yellow gold shank, 18ct. London 1988.
340. A ladies dress ring, a cluster of six mid blue pear cut stones set in floral form, intersert with seven small diamonds set in 18ct white topped yellow gold based mount to split shoulders London 1988.
341. A Victorian silver nurses belt buckle, each side of rectangular shape with pierced rococo scrolling and trefoil shaped central vacant cartouche to loop and bar fastener. Birmingham 1897.
342. A rare 9ct gold cased Omega F300 electronic chronometer (pre quartz), "tuning fork" movement, champagne dial black accent baton numerals, sweep second hand, luminous hands, date aperture on black leather strap.
343. A necklace of graduated faceted citrines ranging in size from 13mm x 11mm to 8mm x 6mm, 27 stones in all, set in white metal claw setting. Length 17", total weight 20.7g.
344. A ladies fob watch, keywind, 18ct gold case, attached to a yellow metal rope twist chain, the watch having ornate gold dial with steeled hands, black Roman numerals. London 1942.
345. A ladies necklet, heavy entwined rope style, stamped 750, weight 33.2g, length 16".
346. A pair of two tone gold earrings of rose design with clipped ear wires.
347. A heavy 9ct gold ladies dress ring, set with an oval hessonite garnet cabachon in a frilled surround, hallmarks rubbed.
348. A gentleman's Rolex 1970's steel Oyster Perpetual Datejust, with white satin dial and Jubilee bracelet.
349. An Art Nouveau style pendant with central oval turquoise blue guilloche enamel plaque, three blister pearls set to sides and bottom with heart shaped frame with leaf decoration, the whole in white metal, marked KS1A on reverse.
350. A Danish silver necklace of articulated leaf form.
351. A Continental stylised fish brooch in white metal.
352. A contemporary design silver pendant on chain Birmingham 1983.
353. A Norwegian silver gilt and guilloche enamel brooch with turquoise blue flower bud curling over a white leaf.
354. A gold and silver handmade pendant of Egyptianesque form set with carved turquoise scarals and a pair of matching earrings 1990.
355. Two brooches with polychrome mineral and shell inserts, in white metal, one a butterfly, the other a fan.
356. A gold longuard medium weight box link chain 62" long 43g.
357. A 9ct rose gold heavy graduated curb link chain 16" long, 39.2g.
358. A gold sovereign, 1909.



359. A yellow metal ladies fob watch, case stamped 14K.
360. A Millenium gold sovereign pendant, 2000.
361. A 9ct gold ladies lozenge shaped stone set cluster ring set centrally with a blue topaz, surrounded by fourteen small diamonds, set in white gold to yellow gold shank. Birmingham 1989.
362. A ladies diamond cluster set dress ring of lozenge shape, a central diamond surrounded by eight diamonds, *estimated mounted weight 0.19ct.*, set in yellow metal to yellow metal shank stamped 9KT 375.
363. A plain 9ct gold "D" shaped wedding band and another.
364. A malachite bead necklace, with stone set spacers.,
365. A Stratton powder compact, with rose decoration.
366. A yellow metal Scottish Bar Brooch, mounted with a sprig of heather, white pearl beads as flower heads.
367. A ladies Victorian 15ct gold ring, set with alternating diamonds and rubies, Chester 1894.
368. An 18ct gold ladies dress ring, set with central pale blue sapphire, flanked by small diamonds in white gold, Tiffany setting to yellow gold shank.
369. An Edward VII silver casket by Levi & Soloman, of heart shape, with a padded velvet cover and satin lined interior, 4" wide, Birmingham 1906.
370. A Victorian silver bowl, of circular form, having two vacant cartouche and embossed with flowers and C scrolls, 4½" diam. Makers mark rubbed, Birmingham 1897. 8 ozs.
371. A George VI silver two-handled trophy cup, of circular tapering form, embossed with the figure of an Irish Wolfhound, and inscribed "Birmingham Championship Show ..... 1949" on stepped foot, 7½" high, Maker J R F & Co. London 1938 15 ozs on a circular wooden stand mounted with winners' plaques
372. A set of four George III silver salts by Robert Hennell, of oval form, the pierced sides cast with paterae and swags, raised on four claw and ball feet, 2 ins high, 3¼ ins wide, London 1774, 10 ozs gross (one with clear glass liner).
373. A Victorian silver fiddle pattern caddy spoon, engraved with initials, London assay.
374. A 19thC Russian silver preserve spoon, stamped 84 standard, with engraved outer bowl and turned handle.
375. A George III silver salver by Ebenezer Coker, the centre engraved with flowers, scrolls and diaper panels, within a nulled well and gadroon border, raised on three hoof feet, 9¼" diam. London 1763 16 ozs.
376. Five pairs of Victorian dessert cutlery, silver handled.
377. A George V silver cigarette box by Walker & Hall, of rectangular form, 4½" wide Sheffield 1920.
378. A lobed silver oval dish. Sheffield 1971.
379. Four silver vodka cups, Birmingham 1970.
380. Two pairs of German silver handled cutlery by Ohlenschlager & Riemann of Frankfurt, in a satin lined case.
381. A set of 12 gilt coffee spoons by Christofle and Cie. Paris. fitted in a satin lined case.
382. A Victorian set of silver handled shoe horn, lace hook, and button hook, by Liberty & Co. of rococo design, in a satin and velvet bound leather case. Birmingham 1898.
383. A pair of George III silver tablespoons, Old English pattern with bright cut decoration. Maker George Gray, London 1793.
384. A George III silver fish slice, with pierced blade. Maker John Edwards. London 1803.
385. An Art Nouveau silver preserve spoon, marked 'Sterling P & B' and bearing sponsors mark RMM & S. London 1903.
386. A pair of silver dwarf candlesticks, of circular form with foliate banded repousse decoration. Maker B & Co. Birmingham 1964.
387. A Victorian silver bowl, with acanthus scroll handles, shell and accanthus rim and part reeded body. Maker WR\* London 1893. 8oz.
388. A silver salver, with pie crust moulded rim, on three scroll feet. Maker P Brothers. Sheffield 1953. 16 oz.
389. A silver flat dish, of rounded triangular form with machine franked floral decoration. Maker G.T. Ld. London 1954. 6oz.
390. A George III silver caster, of inverted baluster form on a square base, Maker Richard Crossley. London 1797. 8oz.
391. A pair of Victorian silver pedestal bon bon dishes, of circular form with bead and bell flower rims. Maker Goldsmiths & Silversmiths Co. London 1900. 8oz.
392. A George V silver inkwell, with capstan cover and square base. Chester 1929. 3½".
393. A George V silver cigarette box, rectangular with presentation initials. Birmingham 1928.
394. A Victorian silver epergne, single trumpet, with three cloverleaf bowls forming the base, on ball feet. London 1900 7oz. 7" high.
395. A pair of Edwardian silver campana urns by William Comyns, of plain form, London 1905. 10 oz. 4½".
396. A George V silver pedestal bowl, with three lion mask ring handles, presentation inscription, on a circular stepped base. 20 oz. 7" dia. 7" high.
397. A William IV silver three-piece teaset by Richard Pearce & George Burrows, of melon form, with scroll handles and shell feet. London 1831. 44 oz all in.



398. A William IV six place setting of crested silver fiddle pattern cutlery and flatware, comprising six table forks, six dessert forks, six tablespoons, six dessert spoons, and six teaspoons, London 1836, mixed matches, together with 2 x 6 bone handled knives by James Dixon & Sons. Total silver weight. 45 oz.
399. An Edwardian silver pig pin cushion by Levi & Soloman. Birmingham 1905.
400. A Bilston enamel cover, of a pug dog, seated on a cushion. 1½" dia. (AF)

## GLASS AND CERAMICS

401. Two 19thC clear glass poison bottles, 14" and 13".
402. A 19thC porcelain lamp, gilt and pink ground with floral decoration, the brass fittings converted for electricity 20" high.
403. A pair of 19thC German polychrome bisque figures of a boy and girl, the boy stood holding a rifle, the girl holding a doll of a French soldier with detached head 16" high
404. A Chinese blue and white baluster vase and cover, decorated with a landscape scene and stylized lappet base 16" high (some damage to rim).
405. A pottery figure of an owl, seated on two books having glass eye inserts. 16" high.
406. A Chinese blue and white ginger jar and cover, decorated with prunus blossom 12" high (some damage to rim).
407. A Meiji period Japanese Kutani figure, seated with a large censer on his head and shoulder. 10" high.
408. A pair of 19thC Staffordshire russet toned half dogs seated with gilt chains, together with a single similar 11½" and 8" respectively.
409. A pair of Royal Crown Derby table candlesticks, painted in the Imari palette and heavily gilt, the sconces with metal sleeves, on fixed knopped tapering columns, square concave bases moulded with dolphins to each corner, pattern no 1128, 10¼ ins high, modern. NB. This lot is being sold in respect of a matter in the County Court and will be sold WITHOUT RESERVE.
410. A 19thC Staffordshire white glazed seated pottery half dog, 8¼" together with a later beige toned Staffordshire seated half dog 6½". (2)
411. A Beswick model of a large elephant, no. 998, 10" high.
412. A Chinese enamel baluster vase of hexagonal form, the yellow ground panels decorated with pink and green floral trails 12" high
413. A Chinese enamel baluster vase of hexagonal form with opposing panels of birds, flora and landscape on a turquoise ground 15" high
414. A Meiji period Japanese Imari charger, decorated with 3 panels with stylized birds around a floral rondel centre, wavy rim 16" diam
415. A Victorian Majolica strawberry dish moulded with floral decoration 12" wide
416. A set of 6 Continental faience side plates.
417. A Chinese cloisonne squat bowl, decorated with a yellow dragon on a black ground, four character mark to base 12" diam. (some damage).
418. A Meiji period Japanese Imari charger, decorated in the basket pattern 12" diam.
419. An early 19thC Derby dish, with gilt to red and blue floral decoration and a Mason's Ironstone plate.
420. A Moorcroft pomegranate pattern ginger jar, of squat circular form, with cover, the latter damaged.
421. An English porcelain plate, painted with differing flowers to the well, the moulded border with flower sprigs, pattern no 565, 8¼" diameter; together with a plate of shaped rectangular form, gilt birds against a blue ground, the well painted with a border of pansies. (2).
422. A Victorian dolls tea service, transfer printed decoration in puce, comprising teapot, sugar, creamer, 6 cups, 6 saucers, and 2 breadplates.
423. A pair of Victorian drabware jugs moulded with loop handle and scrolling foliate body 5" high
424. Oriental ceramics, bullet shape teapot, sake cups, teabowls and saucers.
425. A pair of Dudson 'Jasper' baluster jugs, moulded with hunting scenes in relief 5½" high.
426. A Carltonware leaf dish and Poole 'Delphis' cylinder vase, 6" high. (2)
427. A Burleighware floral fruitbowl and Crown Devon 'thistle' vase. (2)
428. A Shelley bone china tea service, rose pattern, ref. 213525, comprising creamer, sucere, breadplate, six cups, six saucers, five plates.
429. A 19thC Prattware paste pot lid, - design "The Travellers rest" (repaired) 4½" framed.
430. Three continental majolica plates, a pair moulded with portrait busts of young ladies; one with two cherubs in a pate-sur-pate style. 7" and 8" dia.
431. A 19thC Staffordshire silver lustre teaservice, hand painted with seaweed and trailing decoration, and another.
432. A Merwi period Japanese Satsuma elliptical dish, 13"
433. A Moorcroft baluster vase and a planter, modern. 4½" and 3½".
434. A W H Goss Parianware bust of a female and another. 8½" and 9". (2)
435. A 19thC Cantonese baluster vase, with shi-shi and salamander handles, 9" high.
436. Three Staffordshire seated cows, 2½" high.
437. A Chinese Jade carving, depicting two young boys, 4" high.
438. Two carnival glass bowls, with wavy rim 6" dia. and two blue and white pottery balls.



439. A 19thC Peking clear glass model of an ox, on a hardwood plinth. 8" long.
440. A Carltonware chinoiserie pedestal bowl, with two gilt handles, orange ground with a black border, enamel decoration, on four ball and claw feet, printed mark and Rd. No. 716292.
441. A 19thC Qajar pottery bowl, depicting figures and buildings within script borders, thickly glazed. 8" dia.
442. A Grimwades Royal Winton lustre jug, with stylized handle, depicting fishes and seahorse amongst seaweed.
443. A pair of Victorian Bristol blue glass vases, with wavy rims, hand painted with fruit and floral. 12" high.
444. A pair of Shelley square sleeve vases, black ground with stylized violet floral motifs, 10" high.
445. A Burleighware jug, yellow ground and moulded with butterflies and flora to the handle and base. 8" high.
446. A Burleighware jug, yellow ground and moulded with Kangaroos. 7" high.
447. A Burleighware jug, yellow ground and moulded with a Hare in a corn stook, 7½" high
448. A Burleighware jug, yellow and green ground and moulded with a galleon and fish, 9" high.
449. A Wood vase, taper jug, Myott Art Deco figure vase, (AF) and a pair of Royal Staffordshire banded vases, (5)
450. A Chinese blanc-de-chine figure, of Guan Yin, 11" high
451. A 19thC Venetian scumbled glass epergne, with crimped rim to the single bulb pedestal and circular base, 14" high.
452. A Victorian lemon glass vase, with moulded and lobed body, 11" high.
453. A faux bamboo moulded pottery lamp base, probably Ducal, 13" high.
454. An Asprey onyx ashtray, mounted with a Royal Doulton figure of Fat Boy.
455. A Royal Doulton figure, Valerie HN 2107. 5" high.
456. A Royal Doulton Character Jug, "Old Salt" D6551 large size.
457. A Royal Doulton Character Jug, "The Poacher" D6429 large size.
458. A Royal Doulton Character Jug, "The Falconer" D6533 large size.
459. A Royal Doulton Character Jug, "Blacksmith" D6571, large size.
460. A Royal Doulton Character Jug, "Montgomery" Damage to beret, large size.
461. A Royal Doulton Character Jug, "Merlin" D6536 small size.
462. A Royal Doulton Character Jug, "Lobster Man" D6620 small size.
463. SPARE LOT
464. A Royal Doulton Character Jug, "Sancho Panza" D6461 small size.
465. A Royal Doulton Character Jug, "Robinson Crusoe" D6539 small size.
466. A Royal Doulton Character Jug, "Falstaff" D6385 small size.
467. A Royal Doulton Character Jug, "Rip Van Winkle" D6463 small size.
468. A Royal Doulton Character Jug, "The Lumberjack" D6613 small size.
469. A Royal Doulton Character Jug, "Gone Away" D6538 small size.
470. A Royal Doulton Character Jug, "St. George" D6621 small size.
471. A Royal Doulton Character Jug, "Robin Hood" D6534 small size.
472. A Royal Doulton Character Jug, "Neptune" D6552 small size.
473. A Royal Doulton Character Jug, "The Gardener" D6638 small size.
474. A Royal Doulton Character Jug, "The Viking" D6526 small size.
475. SPARE LOT
476. Two Japanese Imari squat vases, each approx 3½".
477. A pair of Moorcroft baluster vases, pomegranate pattern, (one AF) 3½" high.
478. A Moorcroft bulbous vase, stylised poppy design, modern. 3½" high.
479. A Wedgwood doll's creamer and a Dresden miniature cup and saucer.
480. A set of four Wedgwood eel plates, blue and white, with shi-shi panels, and a further Willow pattern example. (5)
481. A 19thC Samson circular patch box, in the Chinese armorial style. 2¼" dia.
482. A 19thC Samson bombe patch box, in the Chinese style with lion & unicorn armorial, 3½" wide.
483. A Cantonese globular vase, cup and Derby coffee can. (3)
484. A Dresden urnular vase and cover, in Helena Wolfesen style and 2 similar double gourd vases, 5" & 3½". (3)
485. Two Hummell figures, Merry Wanderer & Goodnight.
486. A Hummell candlestick, Herald Angels.
487. A pair of Naples figures, in military uniform; and four others (6)
488. A pair of moulded figures of Chinese children, polychrome decoration, seal mark, 4½" high



489. Two Royal Copenhagen figures, of a young girl with symbols and a young boy with a horn.
490. A Prattware terracotta vase, with huntsmen on horseback.
491. A Venetian glass two handled cup, in green and gold.
492. A 19thC Samson figure of a Cherub, with a goat bearing gold anchor mark.
493. A Bohemian green and clear glass trinket jar, with gold highlights.
494. A Chinese blue and white cylinder stickstand, painted with birds and flora, (AF)
495. A stoneware spirit flagon, marked Futton, Dunlop & Co Ltd, Cardiff., impressed maker 'Bristol'. 20" high.
496. A pair of early 20thC majolica ewers, with transfer printed landscape scenes, 14" high..
497. A 19thC Eichwald pottery match striker figure, of a man and horse.
498. A Victorian toilet jug and bowl set, in cream, green, pink and floral decoration.
499. A Victorian Staffordshire cow creamer, in black glaze with gilt highlights.
500. A Victorian Staffordshire cow creamer, black glazed on terracotta.
501. A Doulton Slater's patent teapot, with cover.
502. A German polychrome stoneware stein, ½ ltr with pewter mounts and tavern scene.
503. Three cut glass decanters.
504. Edwardian sundae dishes/champagne saucers.
505. A 19thC porcelain figure group, of Eros & Psyche, on an oval base 8" wide 8" high
506. A set of Royal Crown Derby egg cups, with a floral pattern, and a Victorian soap dish.
507. A pair of Sitzendorf figures, of shepherd and shepherdess and a continental porcelain figure group. (3)
508. Three 19thC Meissen cabinet plates.
509. Three Chinese blue, white and red saucer dishes, and two others. (5)
510. A Victorian Majolica cheese dish stand, and a Chinese blue and white bowl. (2)
511. A Royal Doulton foliageware jardiniere, moulded and painted with leaves, impressed mark to base No 2109. 9" high, 11" dia.
512. A Royal Doulton foliageware bowl, moulded and painted with leaves, impressed mark to base No 6829. 3½" high, 9" dia.
513. A Leach stoneware ginger jar and cover, mottled brown and grey, impressed mark. 6" high.
514. A Ruskin stoneware gourd lamp base, unglazed in blue and brown, impressed mark. 8" high.
515. A Ruskin stoneware gourd vase, with frosted glaze, impressed mark 1932. 8" high.
516. A Ruskin orange lustre bulbous vase, impressed mark 1919. 4½" high.
517. A Loetz style iridescent glass vase, of lobed form.
518. A cranberry bubble glass vase, of tapering form, 7½" high.
519. A 19thC gilt cranberry glass tazza, with folded foot, 11" dia. 2" high.
520. A porcelain figure of a dandy, Galahad.
521. Three Bristol blue glass saucers.
522. A Victorian porcelain fruit service, hand painted with floral reserves within a beige border, comprising four comports and eight plates.
523. A set of four Royal Crown Derby side plates, in the Japan palette, 7" dia.
524. A set of four Royal Crown Derby side plates, in the Japan palette, 7" dia.
525. A Doulton Burslem blue and white globular vase, moulded with foliage enclosing panels of children at play, printed mark. 4½" high.
526. A Doulton Lambeth stoneware vase by Mary Butterton, painted with pansies and foliage within lappet borders, printed mark, artist monogram and 'AC898. 9" high
527. A Wedgwood majolica bowl, with EPNS rim, moulded with swags and three scroll feet. 10" dia.
528. A pair of Victorian pottery moon flasks, green ground with black stylized Aesthetic motifs. 9" high.
529. An early 19thC blue and white transfer printed dessert service, decorated with stylized floral panels, comprising three lozenge dishes, three trefoil dishes, and five side plates with reticulated basket rims.
530. A Beswick figure of a grey setter, marked 'C H Bayldone Baronet'. 6" high.
531. A Beswick figure of a seal, No 1534. 3½" high.
532. A Burleighware blue and white willow pattern dinner service, comprising three graduated rectangular meatplates 16 - 11", twelve dinner plates, six side plates, two tureens with covers and sauceboat.
533. A Burleighware blue and white willow pattern dinner service, comprising three graduated rectangular meatplates 16 - 11", twelve dinner plates, six side plates, two tureens with covers and sauceboat.
534. A Doulton Lambeth Slater's patent jardiniere, impressed mark, 17" dia. (some moulding loss)
535. A Royal Worcester cabinet plate by J Stinton, painted with two highland cattle watering, signed, year cypher for 1926, 9" dia.
536. A pair of Royal Worcester ovoid vases by H Davis, painted with sheep in a highland landscape, signed, marked with model no. 287\*/H, year cyphers for 1910, 8" high.



537. A pair of Noritake campana vases, with gilt floral enamel decoration. 8½" high.
538. A Meissen miniature cup and saucer, floral encrusted with hand painted decoration, cross swords in underglaze blue over M.
539. A 19thC Prattware pot, with polychrome transfer printed cover depicting, children playing with a sailing boat in a coopered tub. 3" dia.
540. A 19thC Prattware pot lid, with polychrome transfer printed scene titled 'Dr Johnson', in an ebonised frame
541. A Samuel Alcock & Co. Grecian style porcelain urn, depicting The Nuptials of Paris and Helen. 8½" high.
542. A Jeane Gille bisque figure of a dandy, polychrome decorated, standing holding a love letter, applied tablet mark to base, 12" high; and another (2)
543. A 19thC parian bust of Queen Victoria, a pair of German porcelain birds of prey and another figure. (4)
544. A Blue John vase, with two serpent handles, 4½" high.
545. A collection of c.30 Arthur Wood and other pictorial tankards, and a further sandwich set.
546. An Alfred Makin (Milan) dinner service, of flo blue floral design, comprising four oval graduated meat plates, two pairs of tureens with stands, two covers, two ladles and three times twelve plates.
551. A Wade Collector's Club 'Three little pigs' set, including the Wolf. (4)
552. A Wade Collector's Club, 'Wind in the Willows' figures.(6)
553. Nine Wade limited edition figures, depicting cartoon characters.
554. Seven Wade 'Cinderella' series figures.
555. Six Wade 'Beauty & the Beast' series figures.
556. Four Wade 'Goldilocks & the three Bears' series figures.
557. Eight Wade 'Children of the World' series figures.
558. Six Wade 'Alice in Wonderland' series figures.
559. Six Wade 'Peter Pan' series figures.
560. Wade figures, including 'Andy Capp and Flo' salt and pepper, and six other character figures.
561. A collection of Wade 'Veteran Car' tankards and ewers.
562. Wade collectable's: including Boer War loving cup, Tetley teapots, etc.
563. A collection of Wade and Irish Wade ornaments.
564. A collection of Wade figures, various and money boxes.
565. A collection of over c. 30 Wade Whimsie animals and figures.
566. A collection of over c. 30 Wade Whimsie animals and figures.
567. A collection of over c. 30 Wade Whimsie animals and figures.
568. A collection of over c. 30 Wade Whimsie animals and figures.
569. A Beswick Beatrix Potter figure, Mrs. TiggyWinkle, Royal Doulton Studio.
570. A Beswick Beatrix Potter figure, Squirrel Nutkin, brown backstamp.
571. A Beswick Beatrix Potter figure, Tailor of Gloucester, brown backstamp
572. A Beswick Beatrix Potter figure, Miss Moppet, brown backstamp.
573. A Beswick Beatrix Potter figure, Ribby, brown backstamp.
574. A Beswick Beatrix Potter figure, Mrs. Rabbit and Bunnies, brown backstamp.
575. A Beswick Beatrix Potter figure, Appley Dapply, brown backstamp.
576. A Beswick Beatrix Potter figure, Hunca Munca, brown backstamp.
577. A Beswick Beatrix Potter figure, Little Pig Robinson Spying, brown backstamp.
578. A Beswick Beatrix Potter figure, Lady Mouse, brown backstamp.
579. A Beswick Beatrix Potter figure, Jemima Puddleduck, brown backstamp.
580. A Beswick country folk series figure, Rabbit Baking, brown backstamp.
581. A Beswick Beatrix Potter figure, Johnny Town Mouse, brown backstamp.
582. Four Beswick Beatrix Potter figures (AF).
583. A Beswick Winnie the Pooh series figure, Piglet, gold backstamp.

## MISCELLANEOUS COLLECTOR'S ITEMS II

584. A George III brass tea kettle and stand, of oval moulded form, the overhead handle with fruitwood grip, upwardly curving spout, and domed cover, the stand with conforming carrying handle, pierced body, on four cabriole legs with pad feet, 22½" high overall.
585. A Regency gilt brass three-light candelabra, with crystal drops.
586. A 19thC Chinese carved wood openwork cylinder vase.
587. A pair of WMF electroplate baluster vases, having banded stylized and feminine design and marked WMF 78 to loaded base, 12" high.
588. A pair of electroplate candlesticks, of foliate form entwined with vines, 10½" high
589. A pair of Georgian seamed brass columnar candlesticks, on stepped square bases, 8½" high.



590. A WMF electroplate ewer, of moulded foliate form with Art Nouveau loop handle marked WMF EP OX I/O 9" high.
591. A black finished candlestick telephone, stamped No 150 with brown Bakelite earpiece, 12" high.
592. A pair of carved ivory figures, of an elderly man and women in provincial European dress, 6½ high on 3" turned wooden plinth.
593. A early 19thC tortoiseshell tea caddy, of bow front pagoda form inlaid with a building and floral mother of pearl inlays.
594. A pair of Japanese brown patinated bronze baluster vases, cast with birds and roses, 8" high.
595. A matched pair of brass lidded measures, each with differing composition finials, loop handles, the bodies with reeded girdles, 6" high.
596. A 19thC brass bound walnut circular fruit bowl together with pestle and mortar, camera and light meters.
597. Two early 19thC brass detachable stove trivets of circular design with serpent supports 7" diam.
598. A Victorian brass mounted horn, with pokerwork design and cartouche mounted with a stag, 18" long.
599. A Victorian brass trivet, with pierced circular top, and a further marble mortar. (2)
600. A 19thC brass monocular microscope by Hartnack and Prazmowski of Paris, bearing makers name and address Rue Bonaparte 1, Paris to the draw tube, together with a case of slides.
601. A Sextant, bearing makers name Henry Hughes Son Limited, London.
602. A Newlyn style planished copper oval tray, with two loop handles, 21" x 15".
603. An oval copper tray by Hugh Wallis, with applied rope twist rim and stamped H W in a square, 17" x 9" oval.
604. A Liberty's Tudric planished electroplate bowl, of cushion form on four paw feet, 12" x 8".
605. A modern leather cased Mah Jong set.
606. A Victorian brass columnar oil lamp, with green glass reservoir and milk glass shade, 28" high.
607. A Mamod live steam steamroller together with a Meccano hand generator.
608. 3 Boxed Lima "O" scale railway carriages and track.
609. A 10-bore Blank breech-loading Saluting/Signalling cannon, mounted on an oak plinth. (NB 10-bore blank firing cannon are listed under Home Office Firearms Regulations as not requiring any licence to possess in UK)
610. A First World War Vickers .303 Machine Gun, Serial Number C7846 manufactured at Vickers Crayford plant on 26th November 1917. A facsimile of the relevant page from Vickers Workbook accompanies the lot. Complete with wooden transit chest. (A Proof House Deactivation Certificate accompanies this lot and no licence is required to possess this gun in UK)
- 610A. A graduated set of four electroplate meat covers by Wm. Hutton & Sons, with only 3 mixed handles. 18" down.
- 610B. A bronze 3 blade propeller, 24" dia.
611. A number of scientific instruments, including a calorimeter, a viscometer and a patent gas mixing valve, together with various brass taps.
612. A Wurlitzer 1800 multi-selector phonograph Juke Box, c.1954/5.
613. A Rowe AMI model MM1 'The music merchant' multi selector phonograph Juke Box, one hundred discs playing serial number 734350 c.1966/67, 50" high 37" wide 28" deep.
614. A pair of pine walking frames.
615. A 19thC brass single pull telescope by Dollond of London, cased and a Victorian plated half pint tankard by Oldham of Nottingham. (2)
616. A small boy doll, with bisque head, hands and feet, 11".
617. A Wolstenholme EPBM bachelor teapot, and a further creamer and sucree (3)
618. A Rolleiflex twin lens reflex camera, with grey and black body and brown leather case.
619. A Hasselblad camera, with 80mm lens.
620. A Digiston 50mm camera lens.
621. A Sonnor 150mm camera lens.
622. A pair of 19thC cold painted bronze figures, of a Blackamore and Donkey, former impressed with a 'B' foundry mark, 5" high.
623. An Alex Martin three section fishing rod, and a mahogany example by Cowan
624. A mahogany three section fishing rod 'THE DUNKELD 91' by Anderson & Son, of Princes Street, Edinburgh, together with a 4" brass ratchet reel by Chas. Farlour & Co. 191 Strand, London.
625. A fine pair of 18thC cast bronze rococo candelabra, each having four sconces in trailing foliate form, the openwork scrolling bases each having a platform of two cherubs on a shell and foliate platform, 20" high.
626. A Victorian daguerreotype portrait, of a seated young gentleman, the base moulded in relief with a dining group by F.R. Smith & Hartmann. NY.
627. Two Victorian blonde tortoiseshell calling card cases.
628. An early 19thC Chronology of the Sovereigns of England, circular metal case etched with text and the Prince Regent, enclosing printed discs, 2" dia.



629. **Two World War I Service Medals**; awarded to GNR R A SMYTHE RA 132220. and 1911 Coronation New Testament.
630. **Campaign & Service Medals, awarded to William Smith**; 1895 Indian medal with Tirah, Samana & Punjab Frontier bars, inscribed 13322 *Gunr. W Smith 31st Fd by KA*; South African medal with Cape Colony bar, inscribed 13322 *Br. W Smith 31st Bty R.A.A.*; Two WWI service medals and 1914-15 star inscribed 90556 *Sjt W Smith RA*; 9 Army Temperance Association medals; death plaque. (15)
631. **A collection of 18thC copper engravings, portraits etc.**, book illustrated, some hand coloured, 7" x 4½".
632. **England Football Programmes**: V Wales, 1954; V Germany 1954; V Spain 1955. (3)
633. **England Football Programmes**: V Uruguay 1964; V Austria 1965; V France 1969. (3)
634. **A Royal Mail Stamp Album**, containing a good collection of G.B. and other stamps, mint and used.
635. **An Album of greeting cards**, birthday, christmas, etc, early 20thC.
636. **Reade (Charles) - The Cloister & The Hearth**, ills. Gorden Browne, no date, cloth boards, gilt and decor and pictorial top cover, and Smiths Plan of London (folding map) and one other volume.
637. **Fox (Charles James)**. A History of the early part of the Reign of James The Second, London 1808 1 vol, contemp. full leather, boards detached and The Spectator, 3 vols, c1745, contemp. calf.
637. **Fox (Charles James)**. A History of the early part of the Reign of James The Second, London 1808 1 vol, contemp. full leather, boards detached and The Spectator, 3 vols, c1745, contemp. calf.
638. **Percy, Reuben & Shotto**. The Percy Anecdotes, pub Warne, 2 volumes., half calf, marked bds.
639. **Fisher**. The Drawing Room Scrapbook; and four bound volumes of Punch,
640. **Tomblin, George**. Memories of the Life of the Rt. Hon. William Pitt, published John Murray 1821, vellum spines, 2 volumes.
641. **Hume, David**. The History of England, published S A Oddy 1810, calf, 8 volumes.
642. **Green, John Richard**. History of the English People, published MacMillan 1890, with maps, four volumes, leatherbound.
643. **Robertson William**. The Works, two volumes, first bound Charles V, the second America, published Edinburgh University Press, 1829; and Kemp's Medical Guide (2)
644. **Kerner & Oliver**. The Natural History of Plants, published Gresham, gt. cloth, two volumes.
645. **Goldsmith, Oliver**. She Stoops to conquer, ill. H. Thompson; Melville Herman, Moby Dick, ill. M Schaeffer; Barrie, JM, Peter Pan & Wendy. ill Attwell. (3)
646. **Mason, Christopher**. The Art of the Steal, published Putnam
647. **Weiner, Norbert**. Cybernerics, 1st Ed., 4th Printing; Mayo, Elton. Human Problems of an Industrial Civilisation, 2nd Ed.; Likert, Rensis. New Patterns of Management, 1961 (3)
648. **A Late Victorian electroplate three piece bachelor teaset**, floral chased decoration, in a satin and velvet lined case.
649. **A Late Victorian electroplate five piece teaset**, by Elkington & Co. with cartouche engraved baluster bodies.
650. **A fine Victorian dressing table cabinet**, the lift top revealing a selection of glass jars and boxes with electroplate covers, the front fall flap revealing two drawers, one fitted for jewellery. 12" wide 9" deep 8" long.
651. **An early 19thC needlework picture**, depicting a young family with lambs in landscape, petit and gros portrait on a painted silk panel. 18" x 24" (Af)
652. **A 19thC Chinese polychrome silk panel**, depicting a sea serpent, 32" x 35"
653. **The following 30 lots are a selection of textiles**, including oriental carpets, rugs, lace and linen.

### VEHICLES (To be sold at 10am prompt)

701. **A 1969 Honda stepthrough moped**, reg no YNN 8H, sold with MOT expired October 99, no V5.
702. **A 1956 Ford Popular**, registration RSV 634, black, 48722 recorded miles, last change of keeper 1992, sold with V5 and MOT to 8th June 2005
703. **A 1947/8 Wolseley 8**, bearing foreign (non-UK) registration CY9902 (Ceylon), sold with the export/import documentation of 1995/6.



Lot No. 703





Lot No. 161



Lot No. 172



Lot No. 219



Lot No. 343



Lot No. 289



Lot No. 171



Lot No. 430



Lot No. 451



Lot No. 441



Lot No. 448



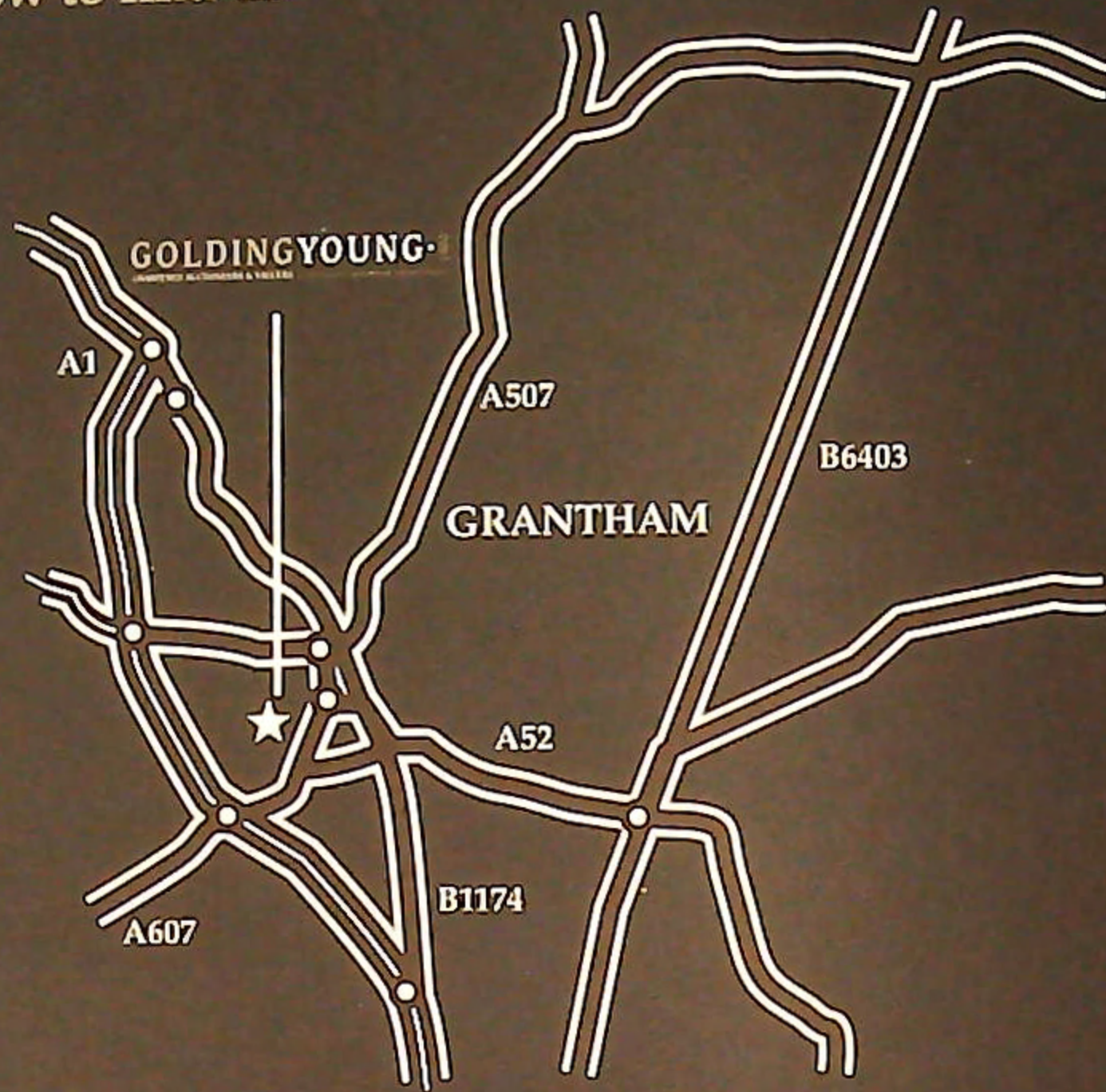
Lot No. 529



Lot No. 584



## How to find us



### By Road

From whichever direction you approach Grantham, you can find us if you observe the following rules: Follow signs for Town Centre. Follow signs for Railway Station. At the roundabout leading to "Station Road", continue around to a double viaduct/ railway bridge. Take the right hand arch which leads into Old Wharf Road.

The Salerooms are the first building on the right. There are parking and loading bays in front of the premises.

### By Train

The auction house is situated very closely to the Railway Station, which is served by the East Coast Main Line. Trains run approximately every 20 minutes from Kings Cross.



**GOLDING YOUNG** ♦ 1900  
CHARTERED AUCTIONEERS & VALUERS Commercial Asset Agents • Arts & Antiques Surveyors

Golding Young & Co., Old Wharf Road, Grantham, Lincolnshire NG31 7AA  
Telephone: 01476 565118 Fax: 01476 561475 Email: enquiries@goldingyoung.com