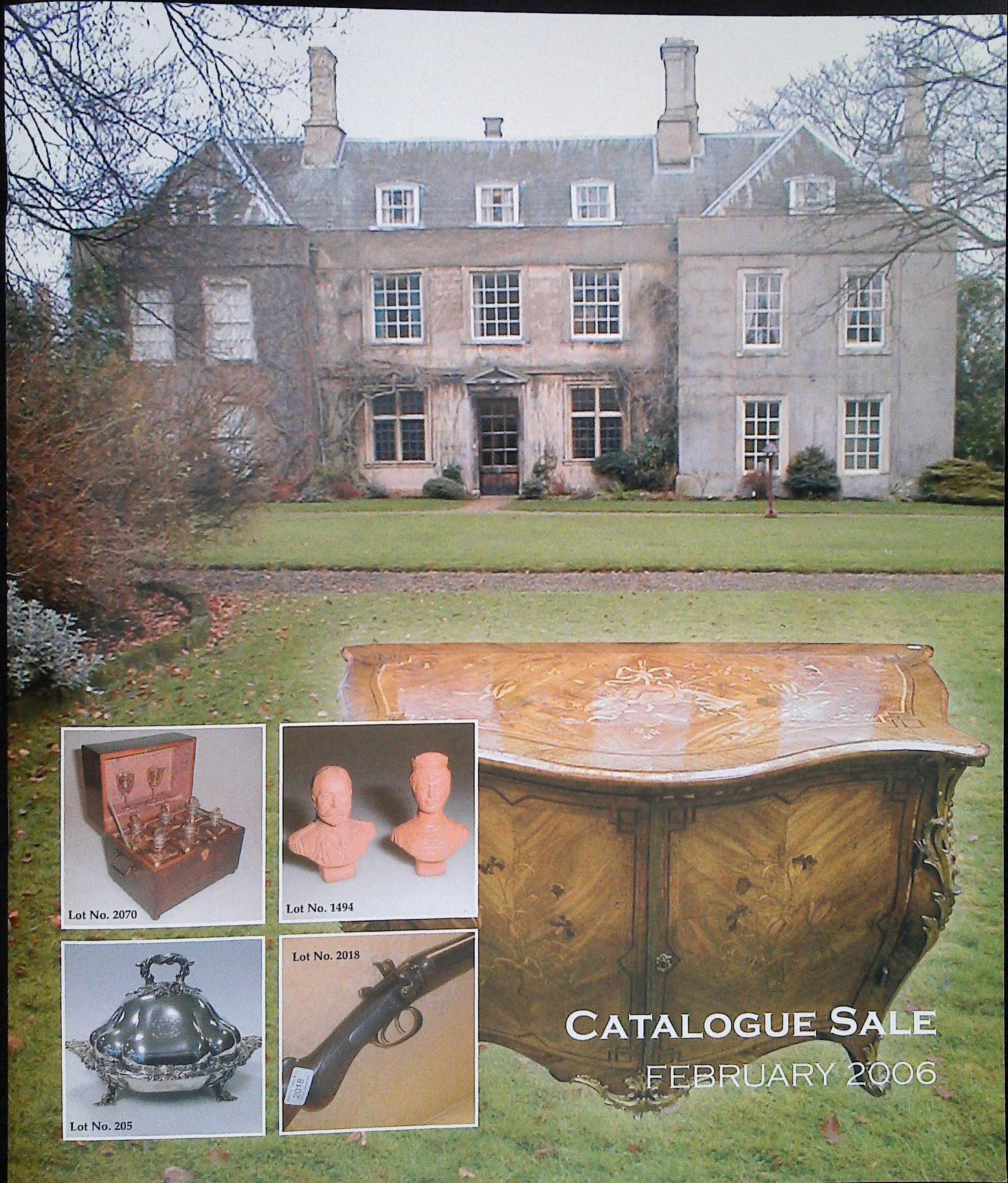


GOLDING YOUNG • 1900

CHARTERED AUCTIONEERS & VALUERS Commercial Asset Agents • Arts & Antiques Surveyors

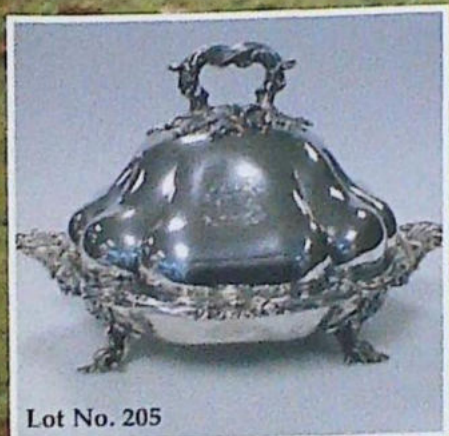
WWW.GOLDINGYOUNG.COM



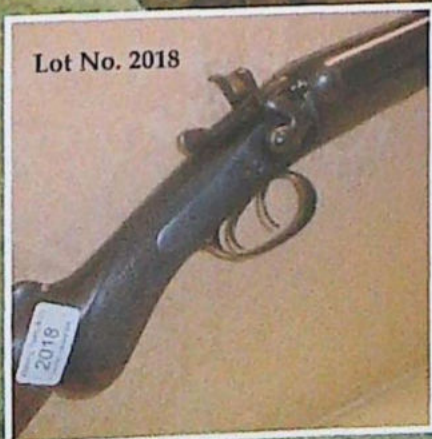
Lot No. 2070



Lot No. 1494



Lot No. 205



Lot No. 2018

CATALOGUE SALE
FEBRUARY 2006

Foreward

Welcome to the February 2006 Catalogue Sale.

Before you have even viewed this sale you have already acquired a future Collectors' item – our last printed catalogue, except for specific client instructions.



The printed catalogue is dead! - Long live The Catalogue Sales.

Over 90% of our auction catalogues are viewed and/or printed directly from our website. The success of this is undoubtedly because of our commitment to offer fully illustrated coverage of lots, but perhaps it is because it is Free?

However, despite this love of technology, clients viewing the sales have been telling us that they still prefer to receive general sale information through the letterbox rather than by e-mail, although this will probably change too.

In considered response to this we will be producing a quarterly Auction Preview & Rostrum Review to replace the printed catalogues. These will coincide with The Catalogue Sales, which will remain online in fully illustrated and text-only versions. Lotted lists can be printed out at viewing at nominal cost should some clients still wish for this service.

Registration is Free to anyone with an interest in antiques, collecting, auctions and to our kindred professions. Please contact our offices by telephone, fax or email to be included in the register.



Grantham House

We are delighted to receive instructions from the Executors of Major-General Sir Brian Wyldbore-Smith to offer for sale the principal estate furnishings of Grantham House.



Grantham House, known as Hall Place in the 15th century, is a magnificent property lying to the north of St Wulfram's church. When it was gifted to the National Trust, Sir Brian and Lady Wyldbore-Smith were nominated tenants.

Sir Brian received a commission in 1933 into the Royal Artillery. After a distinguished military career he became a key fundraiser for the Conservative party. His life brought with it close contact with leading figures of the time such as Field Marshall Montgomery and of course Granthamian, Baroness Thatcher during her years as Prime Minister.

The sale of contents of Grantham House offers a wide range of antique and decorative furnishings of a traditional nature. It has an underlying imprint of world travel with objects from around the globe. Even if you do not look to buy, it is still a 'must view' sale.



We look forward to seeing you at viewing.

If there is something you are considering selling please feel free to talk to our valuation team.

Colin R Young

Colin R Young MRICS FNAVA

GOLDING YOUNG ♦ 1900

CHARTERED AUCTIONEERS & VALUERS Commercial Asset Agents ♦ Arts & Antiques Surveyors

Upon instructions from
The Executors of Major-General Sir Brian Wyldbore-Smith CB, DSO, OBE
the principal Estate contents of Grantham House removed to The Grantham Auction Rooms
for convenience of sale; The Important Collection of over 300 lots of UN-RESERVED ART
POTTERY of the late Roy Marsh of Lincolnshire; The clocks and pocket watches of the late
Mr Lewis Springfield of Grantham by order of the Executors; A further private collection of
over 50 pocket watches, horology tools and watchmakers stock of parts, and consignments
from over 180 vendors from throughout the region.

GOLDING YOUNG & CO will sell by AUCTION

ANTIQUES, WORKS OF ART & COLLECTORS ITEMS

On Tuesday 14th February 2006 at 10am

Jewellery, Watches & Bijouterie	Lots 1 to 150
Silver, Plated Wares, Valentine & Postcards	Lots 151 to 233
Watchmakers' tools & stock	Lots 233 to 245
Coins & Medals	Lots 246 to 325

At 12.30pm

Art Pottery & European Ceramics	Lots 1001 to 1532
---------------------------------	-------------------

On Wednesday 15th February 2006 at 10am

Guns & Taxidermy	Lots 2001 to 2050
Antique & 20thC Collectables	Lots 2051 to 2150
Pictures, Prints & Miniatures	Lots 2151 to 2220
Glass	Lots 2221 to 2266

At 12.30pm

Oriental Ceramics & Works of Art	Lots 2267 to 2336
Antique & Decorative Furniture	Lots 2337 to 2500
Clocks & Barometers	Lots 2501 to 2533
Textiles & Toys	Lots 2541 Onward

Lot enquiries Suki J Burnett F.N.A.V.A. Jan L Squires P.J.Gem.Dip, F.N.A.V.A. Colin R Young M.R.I.C.S., F.N.A.V.A.

Accounts enquiries Nicola Seymour B.A.

VIEWING:

Over 1300 lots Illustrated Online from Friday 10th at WWW.GOLDINGYOUNG.COM

Also in the Auction Rooms

Sunday 12th February 1pm to 5pm, Monday 13th February 2pm to 7pm,
and Saledays 9am to 10am.

Golding Young & Co.

Old Wharf Road, Grantham, Lincolnshire NG31 7AA

Telephone: 01476 565118 Fax: 01476 561475 Email: enquiries@goldingyoung.com



Buyers Hotline: 01476 575202

For lot enquiries and commission bids viewday and saledays only.

FORTHCOMING EVENTS AND NOTICES

Whatever you are thinking of selling... *Golding Young has the Auction Solutions.*

For details of all forthcoming sales *visit our website or call for our Sale Calendar*

Now Cataloguing Entries of Fine Antiques, Works of Art & 20thC Collectables

For our next important Catalogue Sale

Entries welcome 9am to 1pm Monday to Friday except Viewing & Saledays.

Antiques Valuation Day Every Friday 9am to 1pm

For details of all forthcoming sales *Visit our website or call for our Sale Calendar*

Situations Vacant Please visit our website for details

Full Property Clearance Service

◆

THE COLLECTIVE SALES

Your Market Place

for Victorian, decorative and second-hand furnishings, jewellery, silver, ceramics, glass, books, clocks, modern collectables, toys, etc.

Surplus business assets, stock-in-trade, vehicles, plant, machinery & equipment.

1st & 22nd March, 2006 at 10am

Catalogues Online Tuesday prior 7pm at WWW.GOLDINGYOUNG.COM

Viewing: Tuesday prior 2pm to 6pm & Saleday from 9am to 10am

ENTRIES ALWAYS INVITED

◆

THE CATALOGUE SALE

Upon instructions from over 150 vendors

who choose GOLDING YOUNG as their Auction Professionals.

Your Market Place

for Fine antiques and works of art, and all fields of collectors' items.

Held quarterly, these sales include select items that need specific and direct marketing through our select mailing list & databases.

Up to 200 vendors selling items to a Worldwide Audience via The Internet.

The Closing date for entries in the following categories is

NEXT ENTRY CLOSING DATE - 14th April

For Specialist Department Sales of

Jewellery, Watches & Bijouterie, Glass & Ceramics,

Toys & Juvenalia, Books, Stamps, Maps, Ephemera

Textiles & Metalware, Arms, Decorations, Coins

Silver and Plated Wares, Clocks & Barometers

Pictures, Prints & Miniatures, Antique & Decorative Furniture

Sporting: Hunting/Shooting/Fishing/Racing

Classic Cars & Automobilia



Sale on Wednesday 10th May 2006 at 10am

Catalogues Illustrated Online from 6th May at

WWW.GOLDINGYOUNG.COM

VIEWING: Monday 13th 2pm to 5pm, Tuesday 2pm to 7pm
& Saleday 9am to 10am.

◆

SALEDAY & VIEWDAY PARKING

Re-development of adjacent premises has commenced and parking can be difficult for viewing and sales at present.

Extra Parking can be found on Wharf Road in the multi-storey Car Park

Or the on-road parking of Westgate and Harlaxton Road, all 2 minutes walk max.

It is illegal to park on a yellow line.

The Loading Bay will be strictly monitored and used for that purpose.

Parking is no longer permitted past the blue gates for Health & Safety reasons.

The development will incorporate a 200 space Car Park to the rear of our premises.

Please continue to respect our neighbour's property and patience to others during this period.

◆

VALUATIONS

Antiques Auction Appraisal Days

Every Friday 9am to 1pm in Grantham

We are the ONLY auction house in the region to have ALL of our experienced valuation staff Qualified as

Fellows of The National Association of Valuers & Auctioneers

ALSO

At The George Hotel, Stamford

2pm to 4.30pm on Fridays

24th March 12th May

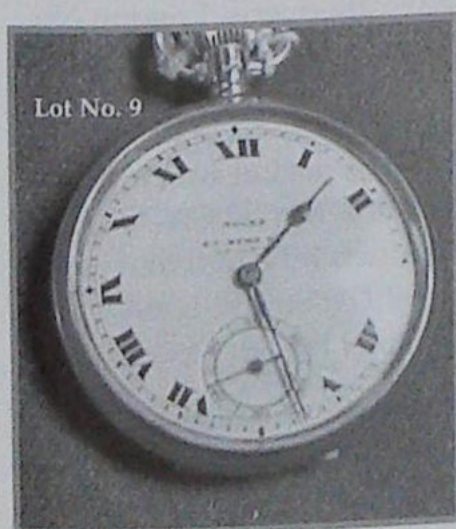
At The New England Hotel, Boston

2.30pm to 4.30pm on Fridays

31st March 30th June

WATCHES

1. **An 18ct gold cased open face pocket watch**, Savage lever escapement with fusee inscribed Abm. Jackson, Castle Street, Liverpool, gold dial, engine turned centre, Roman numerals, replacement hands, subsidiary second hand, heavily embossed bezels with flowers and leaves, Chester 1824.
2. **A Victorian 18ct gold cased open face pocket watch**, gold dial, acanthus leaf centre, Roman numerals, subsidiary second hand, engraved balance cock, diamond end stone, fusee movement scribed Edinburgh, back cover with presentation inscription, London 1840.
3. **An 18ct gold cased half hunter pocket watch**, white enamel dial, black Roman numerals, subsidiary second hand, scribed Russels Limd. (sic) 18 Church Street, Liverpool, movement with the same, Birmingham, date rubbed, early 20thC.
4. **An 18ct gold half hunter pocket watch**, white enamel dial signed J.W Benson London, Roman numerals, subsidiary second hand, movement scribed J.W Benson, bezel wind 62-64 Ludgate Hill, London, London 1901.
5. **An 18ct gold half hunter pocket watch**, white enamel dial, Roman numerals, subsidiary second hand, bezel wind, inscribed back, London 1897, case maker J.B.
6. **An 18ct gold half hunter pocket watch**, white enamel dial, Roman numerals, subsidiary second hand, movement scribed, "The Field Watch" J.W Benson etc, back monogrammed London 1895.
7. **An 18ct gold open face pocket watch**, white enamel dial, Roman numerals, subsidiary second hand, movement scribed Wllm. Rogers, Cook St Liverpool (examined by) No.75796, bezel wind, London 1887.
8. **An 18ct gold open face pocket watch**, white enamel dial, Roman numerals, subsidiary second hand, key wind, engine turned case, vacant cartouche to back, Chester assay, date rubbed.
9. **An 18ct gold open faced pocket watch**, white enamelled dial, signed Rolex, R.C. Kemp & Co Leicester, heavy Roman numerals, subsidiary second hand, bezel, lever movement signed Rolex, Helvetia, 15 jewels and Swiss made, case maker ALD, Birmingham 1924, inscription to case back.
10. **An 18ct gold cased open face pocket watch**, white enamel dial, signed The London Manufacturing Goldsmiths Co. Ltd. Nottingham, Roman numerals, subsidiary second hand, bezel wind, lever movement 503941, backplate scribed as dial, London 1901.
11. **An 18ct gold cased full hunter dress pocket watch**, white enamel dial (some damage), Roman numerals, subsidiary second hand beetle hands, movement scribed H.H Curtis, Neath, Key wind, casemaker GM London 1861.
12. **An 18ct gold open face pocket watch**, white enamel dial, Roman numerals, subsidiary second hand, bezel wind, lever movement No. 48080, case maker FT, Chester 1905, inscription to case back.
13. **An 18ct gold open face pocket watch**, white enamel dial, Roman numerals, subsidiary second hand, bezel wind, striking key wind, no name or markings, Swiss gold marks.
14. **An 18ct gold open face pocket watch**, white enamel dial, Roman numerals, subsidiary second hand, key wind movement No. 41803, no name, London 1884.
15. **A Victorian 18ct gold open face pocket watch**, white enamel dial, Roman numerals, subsidiary second hand, Key wind movement scribed S.C Wolf, Hull, No 96550, London 1877.
16. **An 18ct gold half hunter pocket watch**, white enamel dial Roman numerals, subsidiary second hand, bezel wind, movement signed Ross & Sons, Glasgow no. 378187. London 1920, inscription to cuvette.
17. **A Victorian 18ct gold open face pocket watch**, white enamel dial, Roman numerals, sweep second hand, movement scribed Willm. Smedley 55 Hunter St, Liverpool No 23008. London 1869, embossed band to case and engraving to case back.
18. **An 18ct gold open face pocket watch**, gold damascened dial with polished Roman numerals, subsidiary second hand, key wind fusee movement scribed M. Smith, West Hartlepool, London 1866.
19. **An Edwardian 18ct gold open face pocket watch**, gold damascened dial with black Roman numerals, subsidiary second hand key wind, no names, Chester assay.
20. **An 18ct gold open face pocket watch**, white enamel dial, Roman numerals, sweep second hand, bezel wind movement number 26334, London 1893, inscription to cuvette, stop watch function.
21. **An 18ct gold open faced pocket watch**, white enamel dial, signed 48749, Dysons Leeds, Roman numerals, sweep second hand, movement 48749, no name, Chester 1895, monogrammed case back, stop watch function.
22. **An 18ct gold open face pocket watch**, white enamel dial, Roman numerals, sweep second hand, bezel wind, movement and dial signed S Goldstone, Manchester and London, 190311, Chester 1898, stop watch function.





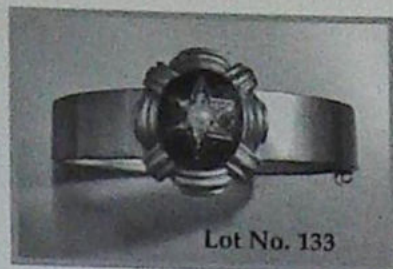
23. **An 18ct gold open face pocket watch**, gold damascened dial with applied multi-colour gold decoration, polished Roman numerals, subsidiary second hand, key wind, fusee movement, Massey Lever escapement, engraved balance cock and diamond end stone, scribed Chas. Spears. Liverpool 1827, Chester 1825.
24. **An 18ct gold full hunter pocket watch**, white enamel dial, Roman numerals, key wind, signed Drillman & Co, London 25039, movement signed the same, Chester 1874.
25. **An 18ct gold half hunter chronograph**, white enamel dial signed Decimal Chronograph Sept 15 1875, the movement scribed M Levi, 116 Pershore Road, Birmingham, No 14147, Chester 1913, bezel wind, case back with monogram.
26. **A silver pair cased open face pocket watch**, white enamel dial with Roman numerals, rural scene to centre of cottage, windmill, horses pulling plough and farmhand, movement no. 44380, pierced and engraved balance cock, London 1860.
27. **A silver pair cased open face fusee pocket watch**, white enamel dial, Roman numerals, movement scribed Tho. Gaskell, Knutsford, Pierced and engraved balance cock and engraved back plate, straight pillars, Birmingham 1810.
28. **A 9ct rose gold open face pocket watch**, cream dial with yellow gold polished Arabic numerals and hands, subsidiary second hand, movement no. 167045, import mark London 1927.
29. **A silver pair cased, open face verge pocket watch**, white enamel dial, Roman numerals, movement scribed Ja. Alling, Dunmow, No 6088 pierced and engraved balanced cock, London 1827.
30. **A silver pair cased open face verge pocket watch**, white dial, faded arabic numerals, movement scribed Geo. Twates, Dublin, engraved balance cock, London 1813.
31. **An open face pocket watch**, fusee movement, white enamel dial (some damage), Roman numerals, movement scribed Ja. Thompson Royal Exchange, London. wrong marks.
32. **A silver pair cased open face verge pocket watch**, with white enamel dial, Roman numerals and arabic numerals on the 5 minutes, movement with squared pillars, scribed Thos. Noon 1696 Ashby, pierced and engraved balance cock and backplate, London 1774.
33. **A silver pair cased open face verge pocket watch**, white enamel dial with faded Arabic numerals, movement scribed W.H Blew, London. No. 5148 London 1781.
34. **A silver pair cased open faced pocket watch**, white enamel dial, Roman numerals (slight damage) movement scribed Edw. Hemmen, London, pierced and engraved balance cock, squared pillars. London 1782.
35. **A silver pair cased open face verge pocket watch**, white enamel dial, Roman numerals (slight damage), movement scribed Edw. Hemmen, London, pierced and engraved balance cock, squared pillars, London 1782.
36. **An Ingersol**, Railway watch and spares.
37. **An 18ct gold case open faced chronometer**, white dial, Roman numerals, sweep second hand, movement scribed W. Greenwood 92 Bridgegate, Leeds, bezel wind.
38. **An 18ct gold open face pocket watch**, white enamel dial, Roman numerals, subsidiary second hand, movement No.98914, engraved balance cock, diamond end stone, case engraved with an all over floral design, London 1859.
39. **An 18ct gold hunter flyback chronograph ¼ repeater pocket watch**, Swiss, No81427, white enamel dial, Arabic numerals, Sweep and subsidiary seconds, bezel wind, engine turned case.
40. **A ladies 18ct gold open faced pocket watch**, gold damascened dial with polished Roman numerals, tri-colour gold applied border, Key wind, fusee movement scribed T. Stevens, London, No. 7340, engine turned case with flowered borders, London 1905.
41. **A ladies 15ct gold fob watch**, fitted with a lug to convert to a wrist watch, gold dial with central floral motif, Roman numerals, bezel wind lever movement, case with all over floral engraving, London import mark 1907.
42. **An 18ct gold cased open faced chronograph pocket watch**, white dial, Roman numerals, sweep second hand, dial signed Centre Seconds 7/2624 Chronograph, movement scribed 72624. Chester 1879.
43. **A Victorian 18ct cased hunter pocket watch**, white enamel dial, Roman numerals, subsidiary second hand, movement scribed Rotherhams, London No. 12650, engraved balance cock with diamond end stone, London 1860.
44. **An 18ct gold cased open face pocket watch**, white enamel dial, Roman numerals, signed Chas. Frodsham 9097, subsidiary second hand, movement scribed Chas Frodsham, 84 The Strand London No. 9097, London 1868, in original leather case,
45. **A Swiss silver cased open face ¼ repeater flyback chronograph**, white enamel dial, two subsidiary dials, bezel wind, case no 12343.

46. **A silver cased open faced pocket watch**, white enamel dial, Roman numerals, subsidiary second hand, rack lever movement, scribed J.P Hendrick Liverpool No. 3365, Chester 1820.
47. **An 18ct gold open faced chronograph**, white enamel dial, signed Centre Seconds Chronograph, Specially Examined, Swiss made, Roman numerals, fusee movement, Chester 1886.
48. **A silver open face pocket watch**, white enamel dial, subsidiary second hand, key wind fusee movement scribed A B Savoury & Sons, 14 Cornhill London, no. 1112, London 1836 in a carved wooden watch stand.
49. **A gilt watch stand of carriage form.**
50. **A George III 18ct gold pair cased verge pocket watch**, white enamel dial, Roman numerals, subsidiary second hand, movement scribed Ja Bennett, Norwich No.2408, pierced and engraved balanced cock, diamond end stone, London 1805.
51. **A Wooden locking watch box** by Ulysse Nardin of Geneve.
52. **A Victorian silver open face verge pocket watch**, white enamel dial, subsidiary second hand, Roman numerals, movement no. 17096, Birmingham 1890.
53. **A Victorian silver pair cased open face pocket watch**, white enamel dial, Roman numerals, movement no 12289, Birmingham 1877.
54. **A Edwardian silver pair cased open face pocket watch**, white enamel dial signed Albert E Dark, Barnstaple, subsidiary second hand, Roman numerals, movement key wind no 828130, Chester 1907.
55. **An 18ct gold open face pocket watch**, white enamel dial, Roman numerals, subsidiary second hand, bezel wind, Earnshaw daytont escapement (broken but present in separate capsule), London 1929, inscription to case back and believed to be marked Newsam County behind dial.
56. **A base metal cased Goliath pocket watch**, Arabic numerals subsidiary second hand, bezel wind
57. **A Victorian silver cased open face pocket watch**, white enamel dial, Roman numerals, movement scribed Cole & Co Cambridge, London 1862
58. **An 18ct gold cased Swiss open face pocket watch**, white enamel dial, Roman numerals, beetle hands, dial signed Retouret, Geneve, case stamped 18K
59. **A gold plated Waltham open face pocket watch**
60. **A novelty cased Estyma pendant watch**, the case being a flattened globe which splits and opens to reveal the watch, on a yellow metal belcher chain.
61. **A silver ladies fob watch**, key wind, case engraved overall with foliage and scrolls, lozenge shaped aperture showing white dial with black Roman numerals with gilt highlights, 35mm diameter
62. **An Edwardian 9ct gold cased open face presentation pocket watch**, the white enamel dial signed Prescott, Roman numerals, subsidiary seconds hand, bezel wind, inside back cover scribed "presented to C. Caunt by Whitaway Laidlow, Calcutta May 1910", movement scribed Lancashire Watch Co Ltd, VIGIL 875802
63. **A silver Waltham open face pocket watch**, and another
64. **A semi Goliath bulls eye pocket watch**
65. **A small size silver hunter pocket watch**, glass missing, dial cracked, marked Henry Capt, Geneve, 45mm diameter
66. **An open faced pocket watch** by Kerr & Biller, Salisbury S A, dial cracked
67. **A semi Goliath open face pocket watch** in an Art Nouveau sculptured travel case, covered with silver plated embossed front cover, green silk and velvet lining
68. **Three early 20thC gold cased ladies wrist watches**
69. **An 18ct gold delicate sapphire and diamond flower head ring**; together with a bracelet made of ceramic plaques and a Dewars whiskey cork containing miniature poker dice
70. **A heavy open link watch chain**, with large swivel fob set with bloodstone and carnelian agates attached, stamped 10c, chain with T bar and swivel stamped 9c, 16" length, 45.1g
71. **Vacheron & Constantin**, an open face 18K gold cased fob watch, movement signed Vacheron & Constantin, Switzerland, 299163, bezel wind, hinged curvette, white enamel dial, signed Vacheron & Constantin, Geneve, fancy black Arabic numeral, red numeral outer minute ring, subsidiary second hand, case back with orange guilloché enamel centre with six point star, small diamond set sectional band and black and white enamel outer band (some repair) dial 1" diameter; together with a banded belcher watch chain with swivel, T bar and orb ornament stamped 15c, 10" length, in a birds eye maple case
- 72-73. **Spare lots**

JEWELLERY & BIJOUTERIE

74. **Two 19thC yellow metal fob seals.**
75. **A small parcel of facet cut, cabochon and uncut semi precious stones**, being moonstones, garnets, tourmaline, amethyst, sapphire and pastes
76. **A three stone dress ring** set with a central small ruby and flanked by two small diamonds, 1970's style setting, shank stamped 18ct
77. **An 18ct gold ladies aquamarine set dress ring**, three oval aquamarines surrounded by tiny diamonds, London 1988

78. A medium weight belcher link longuard stamped 9ct, 58", 16g
79. A 1930's ladies 9ct gold wristwatch on expanding bracelet, Chester 1931; together with another similar
80. A cased set of shirt studs and matching tie pin, turquoise guilloché enamel
81. A lava cameo bracelet, seven plaques of various earthy coloured male heads in linked yellow metal frames
82. A Victorian jet brooch, a women's head in high relief, pie crust edge, 2" x 1½"
83. A tri-colour mesh link bracelet, stamped 9ct, 7½" length, 26.7g
84. A tube link fancy neck chain by "Anselmini" stamped 750, 30.6g
85. A 9ct gold link and bar neck chain, 18" length, 28.1g
86. A 1970's style crossover diamond and ruby ring, stippled finish, in yellow metal stamped 18ct, 9.1g
87. A heavy belcher link neck chain, stamped 375, 24", 67.6g
88. A solitaire diamond ring set in 18ct white gold claw setting to 18ct yellow gold, D shaped shank, 0.72ct, yellow tint almost to fancy, clarity assessed as VVSI-IF, 3.7g, Birmingham assay
89. A large link charm bracelet with four censor style charms attached in yellow metal stamped 750, 26g
90. A small collection of trinket items, including silver vesta case, brooches, costumes brooches etc
91. A Victorian jet memorial brooch, a large floral carved centre with floral garland surround, 55mm x 50mm
92. A Victorian 9ct gold rope link guard chain. Length 53", weight 14g.
93. A Victorian circular memorial brooch, shield like design, memorial insert verso in 15ct gold. Chester 1885.
94. A 1930's pink metal armband, stamped 9ct.
95. A Victorian oval memorial brooch, scalloped border, small diamond set into centre, memorial insert verso, yellow metal.
96. A shell cameo brooch of a woman's head in yellow metal frame with scrolls stamped 9ct.
97. A late Victorian/ Edwardian brooch, scrolling design, set with two small sapphires and seed pearls, stamped 15ct, maker: A.W.J & co.
98. A heavy graduated curb link silver watch chain with swivel and T bar, 31cm long, 35.1g
99. A shell cameo brooch in yellow metal frame and similar ear clips
100. Three Victorian stone set gold rings, one with two stones missing
101. A 9ct rose gold watch chain, alternating elongated oval and round links, with T-bar and swivel, 14", 35g.
102. A 9ct rose gold curb link watch chain, with T-bar and swivel, 16", 20.9g, Birmingham assay.
103. A 9ct rose gold double graduated curb link watch chain, with central T bar, medallion and two swivels, 17", 55.6g
104. A 9ct gold curb link watch chain, with T bar and ships helm compass attached, and swivel, 16", 54g
105. A 9ct rose gold curb link watch chain, with T bar and two swivels, 14" 42g.
106. A 9ct rose gold large curb link watch chain with two swivels, 15", 48.8g.
107. An Edwardian 9ct rose gold heavy curb link watch chain, with T bar swivel and attached spinning fob set with a citrine, Birmingham 1906, 15", total weight 63g.
108. A 9ct rose gold slightly graduated curb link chain, two swivels, T bar and fob, Birmingham assay, 15", 60.6g all in.
109. A 9ct rose gold large link watch chain, swivel, T bar and fob, Birmingham assay 1924, 15", 50.2g all in.
110. An Edwardian 9ct rose gold fancy link watch chain, swivel, T bar and medallion, Birmingham assay 1908, 14½", 46.2g all in.
111. A 9ct rose gold watch chain, fancy link, T bar and two swivels, 24", 36.9g.
112. A 9ct yellow gold long and short link watch chain, T bar, swivel and medallion, 15", all in weight 46.2g.
113. An 18ct yellow metal long and short link watch chain, with T bar, swivel and chevalier medallion, Birmingham assay, 16", all in weight 36.3g.
114. A silver large curb link watch chain, maker SS, London assay, 16", 44.5g.
115. A Victorian silver heavy graduated curb link watch chain, with swivel, T bar and attached fob, London 1868, 14", 69g all in.
116. A heavy curb link chain in yellow metal stamped 916 (22ct equivalent) 21" length, 83.3g.
118. A 22ct gold amethyst set signet ring, the round faceted stone of 8mm diameter approx, claw set to wide shoulders and shank. London 1968. 6.3g.
120. A gentleman's heavy brick effect link bracelet in yellow metal stamped 18K 750, 8" length, ¼" wide. 78.6g.
122. A sapphire and diamond dress ring, a central dark blue sapphire, oval 8.4mm x 6mm approx, flanked by three small diamonds each side, set in 18ct white gold, London 1965 maker RN, total weight 4.9g



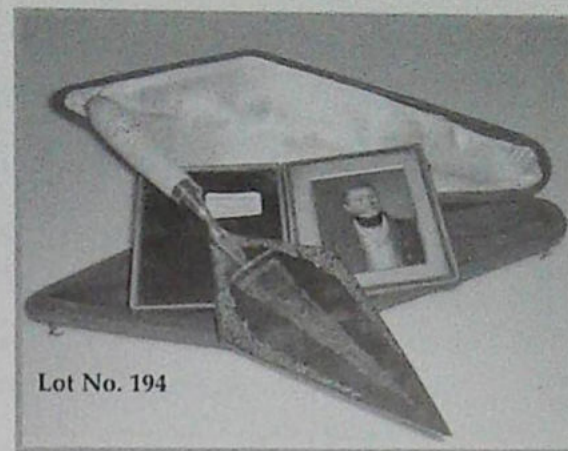
123. **A Victorian quizzing glass**, loop handle, floral engraving, in yellow metal
124. **A ladies stone set dress ring**, an emerald cut citrine set in a high basket setting to wide shouldered shank, yellow metal stamped 9ct
125. **An Edwardian bloomed gold bar brooch**, set centrally with a small ruby flanked by seed pearls, 9ct, Birmingham 1905
126. **A Victorian horse shoe stock pin**, 9ct, Birmingham 1900
127. **A bar brooch with attached Highland terrier**, yellow metal stamped 9ct
128. **A shell cameo brooch**, 4mm x 3mm in a yellow metal frame, depicting a woman's head with entwined vines
129. **A shell cameo brooch**, 4mm x 3mm in a yellow metal frame, depicting a woman's head with entwined vines
130. **A Victorian 15ct bloomed gold memorial brooch**, an old cut diamond set centrally in a four point star cut, with smaller old cut diamonds set at the quarters in tear drop shaped cuts, memorial insert to the back
131. **A silver broadsword and shield brooch**, Chester assay
132. **A Victorian 9ct gold graduated watch chain**, with T bar, swivel and carnelian and bloodstone agate oval swivel fob attached, Birmingham 1894, *Total weight 58.6g*
133. **A Victorian bloomed gold hinged plain bangle**, with centrally set blue guilloché enamel oval motif with diamond and seed pearl set star atop, rope border and memorial insert to the reverse, *weight all in 20.7g*
134. **A gold metal hinged bangle**, D shape, decorated with engraved acanthus leaves and cross hatching; together with a paste set buckle
135. **A Victorian memorial brooch** with seed pearl and ruby set central star motif, insert to reverse
136. **A pale amethyst and seed pearl set oval pendant/brooch** set in yellow metal, the central millegrain set stone surrounded by seed pearl set leaves and flowers interspersed with small oval amethysts, 3½" x 3mm, *total weight 8.8g.*
137. **A Victorian sovereign, 1887, ring**, attached together with a ½ sovereign 1911 with pendant mount attached (2)
138. **A pink gold 6 bar musied link gate bracelet**, with padlock clasp stamped 9c, 8½" length, *total weight 27.4g*
139. **A set of six shirt studs**, depicting six different 1930's footballing scenes
140. **A set of six shirt studs**, depicting six different horses heads, together with a set of six mother of pearl shirt studs
141. **A ladies crossover diamond ring**, two oval brilliant cut diamonds, totalling approx 1ct, mounted estimated weight, set in yellow metal stamped 18ct, total weight 3.2g.
142. **A three stone ring**, a central sapphire (probably Verneuil) flanked by two diamonds 0.70ct approx. each, claw set in yellow metal to yellow metal shank, 4.7g
143. **A marquise shaped diamond pavé set ring**, early 20thC styling, total diamond weight 0.30ct approx
144. **A shell cameo brooch in yellow metal frame.**
145. **A gold gentleman's diamond set signet ring**, a round brilliant cut stone of 0.50ct approx set in a scooped mount to wide shoulders, shank Birmingham 1939, 6.2g
146. **A Victorian circular bloomed gold memorial brooch**, set with a cabochon garnet, hair filled insert to reverse and inscription reading "Margaret Lady Armstrong, died Sept 2nd 1893".
- Provenance:*
Margaret Lady Armstrong was the wife of Lord Armstrong, the engineer in charge of building Tower Bridge, who was later to become part of Vickers Armstrong - Armstrong Siddley. The brooch was a gift to a grandmother, formally in service at Cragside House Northumberland, one of the Armstrong family homes.
147. **A jewellery box** containing a quantity of costume and other jewellery including Victorian jet and paste brooches, Venetian glam beads, amethyst beads, silver thimbles, heavy belcher chain etc
148. **An Arts and Crafts style pendant** marked O.B 10K, a bar brooch, an enamelled brooch and an Edwardian pendant (AF)
149. **Three Victorian small brooches**
150. **A Victorian ivory and gilt metal purse**, with turquoise watered silk lining and guinea pocket, fastening bar marked BREVETE S.G.D.G, the ivory panels front and back inscribed "Presented to Miss Swaine together with 20 guineas; a brooch and earrings on her leaving Derby, By her numerous friends in appreciation of her unvarying courtesy while at the Royal Hotel May 12th 1894"; together with a cased paste brooch and earrings, 85mm x 53mm

SILVER & PLATED WARES

151. **An Edward VII silver waiter**, of square form, with serpentine and scroll borders, on four claw feet, Chester 1903, 7" square, 11oz
152. **A late Victorian silver basket**, of circular tapering form, with pierced walls and foot, and similarly pierced swing handle, Sheffield 1898, 5" high including handle, Makers mark: RM EH, 4oz



153. A pair of Victorian cut glass and silver mounted eau de cologne bottles, by William Comyns, of square form, the four sides and bases with star cut detail, the silver stands and shoulders pierced with flower heads, scrolls and trellis, the covers repoussé with figures, London 1891, 5½" high
154. A late Victorian silver helmet cream jug, with a scalloped rim over delicate pinched detail, around a monogrammed cartouche, scroll handle and on a square base, Sheffield 1898, 5½" high, 4oz
155. A George III silver tankard, of plain bellied form, with a leaf-capped scroll handle, on a moulded circular foot, London 1771, 4¼" high, makers mark 1*M, 9oz
156. Three George V silver dishes, circular, the everted rims with bead and diaper cast detail over pierced walls, Birmingham 1930/31/32, 4½" diameter, 9oz
157. A George IV silver pedestal salt of oblong form, with a rope border, raised on a reeded oblong foot, bears partial hallmark for Edinburgh c.1829, 2" high, 3½" wide; together with a Kings pattern salt spoon, Edinburgh 1829, 3oz gross (2)
158. An Edward VII silver vesta, with machine turning, Birmingham 1902; another, Birmingham 1906; another, Birmingham 1926 (3)
159. A George V silver cigarette box, with machine turning to the hinged lid, wood lined, London 1920, 4½" wide
160. A Chinese white metal pepperette, an Indian white metal salt, an EPNS marrow scoop, a small sauce spoon, a white metal miniature bell and a thimble (6)
161. An Edward VIII silver sauce boat, with cut rim, ivory leaf capped handle and on three pad feet, Sheffield 1936, 7" wide, 5oz
162. A George V silver circular bowl, on a raised foot, London 1919, 4½" diameter, 5oz
163. A George III silver boat-shaped mustard, possibly by Jos. Preedy, the hinged domed cover with ball finial, with pierced and bright cut decoration, reeded scroll handle, sapphire glass liner, London 1799, 3" high, together with a mustard spoon (2)
164. A matched pair of George II / III silver salts, of plain circular form with narrow milled rims, each on stepped hoof feet, London 1759/1760, 2¼" diameter, Makers marks: I. M + C. D
165. A George V silver tankard, of plain circular form, with a loop handle, engraved with a monogram, Sheffield 1932, 3½" high, 7oz
166. A George V silver cigarette box, oblong with a cavetto moulded lid, on bracket feet, Birmingham 1930, 7¼" wide
167. A pair of George III silver mustard spoons, engraved with initials, possibly London 1811
168. A George III silver salver, circular with a shell and pie-crust border, the centre with later floral engraving, on three scroll feet, hallmark rubbed, probably London 1783, 12" diameter, Makers mark IS, 29oz
169. A George III silver marrow spoon, London 1809, 9" long, 2oz
170. Six Edward VII silver Old English pattern dessert spoons, Sheffield 1901 and 1906, 9oz gross
171. A George V silver egg cup, London 1911; a pair of George V silver napkin rings, Birmingham 1915; and an EPNS spirit kettle burner (4)
172. An EPNS spirit kettle, stand and burner, with a fixed overhead composition handle, bead rims, the stand with cabriole legs on pad feet
173. A pair of Sheffield plate candlesticks, of knopped circular form, with foliate cast borders, on stepped circular bases, 10¼" high
174. A pair of silver plate candlesticks, of circular tapering form, with cast foliate and scroll removable sconces, knops and foot, 10" high
175. A silver plate four-light candelabra, with urn shaped sconces on scrolling reeded and foliate cast branches, the column with flame finial and gadroon borders, on circular foot, 20" high
176. A Walker & Hall EPNS two-handled soup tureen, the domed cover with a removable loop handle; an EPNS muffin dish and cover with inner tray (2)
177. A Viners oval entree dish and cover, with gadroon borders; a sauce boat with scroll handles and on three pad feet with shell shoulders; another sauce boat; a pair of asparagus tongs and six table forks
178. A pair of modern silver two-branch candelabra, each with two reeded scrollery branches supporting removable sconces with gadroon rims, the tapering knopped stem on a circular foot, Sheffield 1972, 14½" high (filled bases)
179. A pair of white metal circular plates, each with reeded and ribband rims, the borders embossed with drapery swags and bows, 8½" diameter
180. A large and heavy silver alms dish, with domed centre and finely stepped rim, London, assay, 16" diameter, 68oz.
181. A George V silver cigar case, with machine banding, the cover engraved with a monogram, Sheffield 1922, 5½" x 3½", 6oz



182. A George V silver three-piece tea service, of oval form, each piece with moulded serpentine rim and on paw feet with trefoil shoulders, the teapot with composition finial and handle, Sheffield 1923, 34oz gross
183. A George V silver hot-water jug, of baluster form, with an everted shaped rim, on three trefoil feet, in the domed corner with composition finial and scroll handle, London 1919, 9" high, 21oz
184. An EPNS three-piece tea service by Elkington, of melon shape, engraved with formal scrollwork, drapery, shells and swags, the tea pot with an ivory finial and raffia handle
185. A EPBM three-piece coffee service by James Dixon & Sons, of baluster form, each piece with initials within engraved strap work cartouches, leaf capped scroll handles and on cast scroll feet, the coffee pot with bud and leaf finial
186. A George VI silver cigarette box, with machine turning, on bracket feet, Birmingham 1947, 6 x 3 1/4", 16oz
187. An Edward VII silver dish, of circular lobed shape, on fow and bun feet, engraved with an inscription to underside, 8 1/2" diameter, 5.5oz
188. A George V silver tea strainer and stand, the strainer with two scroll pierced handles, Birmingham 1921, 2.5oz
189. A pair of George V silver triangular napkin rings, engraved with initials, Birmingham 1933; a William IV silver caddy spoon by George White with ivory handle (no date letter); an engraved napkin ring 1949; a Victorian desk seal with ebony handle (5)
190. An early 20thC Sterling silver calling card case, of rectangular serpentine form, with machine turned floral decoration, the button fastener inset with a blue stone, stamped 935 Sterling silver, 3 1/4 x 2 1/4"
191. Three Edward VII silver vesta cases, all variously engraved, Birmingham 1907/1908/1910, 3oz gross
192. An Edward VII silver bell rattle, with an attached ivory teething ring; another smaller example; a jester rattle (lacking teething ring) (3)
193. A silver and tortoiseshell hair brush, mirror and brush set.
194. A Victorian silver presentation trowel by George W Adams, with an ivory handle, the blade engraved with an image of the Handley monument at Sleaford, within a foliate scroll border, the obverse with a presentation inscription, London 1850, 14" long, in a fitted case; together with a portrait miniature after William Foster, the recipient of the trowel, half length, wearing a blue jacket, white waistcoat and a cravat, in a folding Morocco case, 3 1/4" x 2 1/2"; a newspaper cutting by the subjects grandson with the history of the event accompanies this lot.
195. A pair of spring mounted candle holders, together with two pierced metal candle shades (tests as silver)
196. A George V silver mounted glass preserve jar and cover, Birmingham 1911; together with a jam spoon
197. An Edward VII silver pepperette, of lobed form, embossed with foliate scrolls, Birmingham 1904, another example; three Victorian fiddle pattern salt spoons, London 1863; a silver handled button hook, Chester 1907 (6)
198. An Edward VII silver photograph frame, of swept oblong form, with reeded and sprig border, Chester 1908, aperture 8 1/2" x 6", 13" x 10 1/2" overall, (lacking stand)
199. A George V silver backed novelty note case, of oblong form, the front engraved with a monogram, Sheffield 1924, 3 1/4" x 3 1/2"; a silver napkin ring, Sheffield 1904, in an associated case (2)
200. A Continental silver box and cover, of oblong form, the hinged cover embossed with a figural scene of Roman soldiers and their captives in a woodland glade, the side with arms and armour, 2 1/2" x 4 1/2" x 3", 9oz
201. An early 20thC oak canteen containing an almost complete suite of Old English silver plated cutlery by Walker & Hall, the canteen with three removable fitted trays, the corner with brass presentation shield.
202. A pair of early George V silver boudoir candlesticks, the removable sconces with bead rims, over fluted stems on a raised swept square foot with conforming borders, Sheffield 1911, 5 1/4" high, filled bases
203. An Edward VIII silver cigarette box of Art Deco design, of swept oblong form, with machine turning and on stepped feet, Birmingham 1935, 7 1/4" wide



Lot No. 206

204. A pair of Edward VII silver and ivory knife rests, on ball feet, Sheffield 1902
205. An early Victorian silver entree dish and cover, by Messrs Barnard, the highly domed and lobed cover with a fixed entwined reeded scroll handle with exuberant foliate platform, the dish with a shell and scroll rim, scallop shell handles, on four cast foliate feet, London 1840, 65oz; with two EPNS pierced Viner trays
206. A George V silver desk stand by Henry and Arthur Vander, of oblong form with reeded borders and on four feet, fitted with a centre removable taperstick between two ink wells, the covers engraved with the crest of the Royal Yacht Squadron, 1933, Handicap for yachts of 15 to 40 tons, London 1926, the taperstick 1930, 10 1/4" x 7", 25oz weighable silver
207. A George III silver sugar basket, of irregular octagonal form, with a swing handle, on conforming pedestal foot, engraved with a monogrammed shield, below an engraved border, Sheffield date letter rubbed, 5 1/4" high, 6" wide, 8oz
208. A George V silver two-handled bowl by Edward & Sons, Glasgow, of circular form, on a raised foot, decorated with a wrigglework and diamond engraved border, 6" over handles, London 1925, 6 1/2oz
209. A George III silver tankard by Hester Bateman, of baluster form, with a leaf capped scroll handle, on a spreading foot, engraved with a wild boar, London 1782, 5" high, 10oz
210. A set of four Sheffield plated entree dishes and covers, probably by Messrs Barnards, the domed covers with fixed scroll and foliate handles, engraved with the Hodgson crest and shell and foliate ornament, the dishes with richly cast scroll and shell rims with scallop shell handles, each with interiors trays with shell handle, 12 1/2" wide
211. A pair of Edward VII silver candlesticks, the detachable beaded sconces over fluted columns, on square domed foot, 5" high, Birmingham 1904, weighted bases. Maker WB Ltd.
212. A set of twelve American Sterling silver forks with scroll edge handles, engraved with initials, stamped STERLING PATENT 1891; a set of six forks, the handles cast with scrolls and foliage, engraved with initials, stamped STERLING
213. A set of six silver teaspoons, with gadroon cast handles with shell finials, Sheffield 1961, cased
214. An Indian silver circular bowl, engraved and embossed in relief with temple and animalia scenes, below a part ground foliate border and engraved scalloped bands, 9 1/2" high, 8 1/4" diameter
215. A pair of George II silver salts, of circular form, later embossed with flowers, on three pad feet, London 1748, 2 1/2" diameter; together with two salt spoons, 4oz gross
216. An Edward VII silver sovereign case, engraved with foliate scrolls, around a shield cartouche, faintly engraved with initials and date 1903, the interior with two sprung compartments for full and half sovereign, Birmingham 1902
217. Seven early 20thC silver napkin rings, various dates, 5oz gross
218. A modern silver plated five light candelabra, with fixed sconces, scrolling reeded branches and on a knopped tapering stem, with circular foot; together with a matching pair of three light candelabra, 14 1/2" high
219. A late 19thC EPNS six bottle cruet stand, with a centre pierced loop handle, the platform fitted with five cut glass bottles on a domed tapering pedestal foot
220. A early 20thC gallery tray of serpentine outline, the well engraved with an inscription, within foliate scroll walls with integral handles, 5 1/4" wide
221. A collection of seven Victorian Valentine cards, five greetings cards with designs after Kate Greenaway and an assortment of Christmas cards
222. An interesting collection of early 20thC post cards and greetings cards, including Christmas and New Year, American greetings, Valentine, Tucks 'Wild West' series, c.1900-1935
223. A collection of cigarettes silks, including National flags, Regimental badges, Scottish Tartans, Ceramic Art
224. An album containing approximately 180 early and mid 20thC greetings cards, Christmas, New Year, Easter and Birthday
225. An interesting collection of approximately 350 early to mid 20thC mainly American postcards, including Greetings, Thanksgiving, Easter, Topographical, Genre and Historical
226. An album containing a quantity of North American souvenir booklets and related ephemera; and a few greetings cards
227. Two albums and a quantity of early 20thC postcards, including humorous, Valentine card, topographical, hunting, etc
228. A set of four George III silver salts by Robert Hennell, of oval form, the pierced sides cast with paterae and swags, raised on four claw and ball feet, 2" high, 3 1/4" wide, London 1774, 10 oz gross (one with clear glass liner).

229. **An early 20thC silver teapot**, circular with pie-crust rim, Birmingham assay, 11oz all in
230. **A pair of George IV silver sauce ladles**, maker WC. London 1828, 5oz
- 230A. **An early 20th century EPNS 4-piece tea and coffee service by Walker & Hall**, of lobed oval form, each piece with capped scroll handles, engraved with a foliate band over shield shape cartouches within scroll and foliate framing, inscribed, comprising teapot, coffee pot, cream jug and sugar bowl.
231. **An Edwardian silver pedestal bowl**, with scrolling repoussé decoration, maker HF, London 1901, 18oz, 9" diameter
232. **An electroplate pedestal bowl**, with two loop handles, 12" diameter
233. **An unusual Hukin and Heath electroplate smokers desk companion**, having conical vesta stand, removable circular cover, and marked H&H 20715 to base, 4" high

WATCH & CLOCKMAKERS TOOLS AND STOCK

234. **Six assorted boxes of clock movements**, parts, accessories etc, including a lantern clock bracket, frame and cover
235. **A good quantity watchmakers spares**, repairs and stock; and two copies of Tome catalogues
236. **A fine watchmakers lathe**, with a full set of tooling, including H'stock, T'stock, Mandrel face plate, chucks, collets, etc
237. **A watchmaker lathe on platform**, with various tooling, including collets
238. **A Victorian pine six-drawer tool chest**, containing horological spares
239. **Watchmaker's tooling and accessories** - a group lot
240. **Watchmaker's tooling**, including swivel vice, universal case opener, etc
241. **A Victorian pine table top chest**, containing watchmaker's accessories, files and spares
242. **A Victorian pine table top chest**, containing watchmaker's spares, screws and accessories
243. **A Victorian pine table top chest**, the single door covering five graduated drawers, with various horology spares
244. **A shop or workshop counter** fitted with twenty-one drawers, holding an extensive stock of watch and clock maker's accessories, stock and tooling
245. **A shop or workshop counter** fitted with thirty drawers of watch and clock maker's accessories, spares and tooling

COINS & MEDALS

246. **An album of GB and world coinage**
247. **An album of GB and world coinage**
248. **Six sheets of GB crowns, 1/- and other world silver coinage**
249. **Twelve sheets of GB 1d, ½d and other world bronze coinage**
250. **A Second Afghan War Medal 1878-79-80**. Awarded to C.A. Sword, with Ali Musjio clasp. The first campaign of the war was led by the Mutiny veteran General Sir Sam Browne VC. The Khyber Pass was forced by taking Ali Musjid on 21st November 1878.
251. **A WWI Victory Medal and War Medal**, inscribed 910136 Cpt M J Warner RA
252. **A WWI Victory Medal and War Medal**, inscribed 53032 Pte T.W Burch, The Queen's R
253. **A WWI Victory Medal and War Medal**, inscribed 6646. Pte T Smith Hamps R, with boxes
254. **WWII War Medal, Defense Medal, Italy Star, 1939-45 Star, Faithful Service, Army Temperance India 1897, and two Coronation 1902 (7)**
255. **A cast relief Lusitania medallion**, depicting the sinking of the ship in 1915, verso satirical skeleton, taking fees at the Curnard office, 55mm diameter
256. **A George V gold sovereign, 1913**
257. **A George V gold sovereign, 1915**
258. **A George V gold sovereign, 1918**
259. **A George V gold sovereign, 1918**
260. **An ER II gold sovereign, 1958**
261. **An ER II gold sovereign, 1958**
262. **A Victorian gold half sovereign, 1892**
263. **A George V gold half sovereign, 1912**
264. **An ER II gold sovereign, 1966**
265. **An ER II gold sovereign, 1963**
266. **A George V gold sovereign, 1925**
267. **An Edwardian gold sovereign, 1910**
268. **A Victorian gold sovereign, 1899**
269. **A Victorian gold sovereign, 1893**
270. **A Victorian gold half sovereign, 1896**
271. **Spare lot**
272. **An Edwardian gold half sovereign, 1909**
273. **A George V gold half sovereign, 1914**
274. **A George V gold half sovereign, 1915**
275. **A George III guinea, 1777**
276. **A George III half guinea, 1789**
277. **A George I quarter guinea, 1718**

278. A George III guinea, 1797
279. A George III third guinea, 1810
280. A William IV groat, 1836
281. A Victorian gold half sovereign, 1884
282. A Victorian gold sovereign, 1887
283. A Victorian gold sovereign, 1901
284. A Victorian gold half sovereign, 1887
285. A George II half crown, 1745
286. A George I 6d, 1723
287. A George I 3d, 1717
288. A George II 1/-, 1745
289. A George II 6d, 1757
290. A George I farthing, 1723
291. A George III crown, 1819
292. A George III 1/-, 1787
293. A George III 6d, 1816
294. A George III 3d, 1763
295. A George III farthing, 1773
296. A George IV 1/-, 1825
297. A George IV 6d, 1826
298. A William IV 6d, 1834
299. A Victorian crown, 1845
300. A Victorian 1/-, 1839
301. A Victorian 6d, 1853
302. A Victorian groat, 1842
303. A Victorian crown, 1887
304. A Victorian double florin, 1887
305. Five Victorian coins, 1887; florin, half crown, 6d., 1/-, 3d.
306. Fourteen various Victorian coins
307. Sixteen various 18thC & 19thC East India Company coins
308. Four coins: 1717 half penny, 1730 half penny, 1739 farthing, 1760 1d.
309. Four coins: 1820 & 1837 half crowns, 1821 crown, 1813 3/- bank token.
310. Five coins: 1776 & 1831 1d., 1799 ½d. and two cartwheels.
311. Four coins: 1821 & 1831 farthings and 1827 & 1831 ½d.

Further numismatic lots will be added to the website.

12.30PM

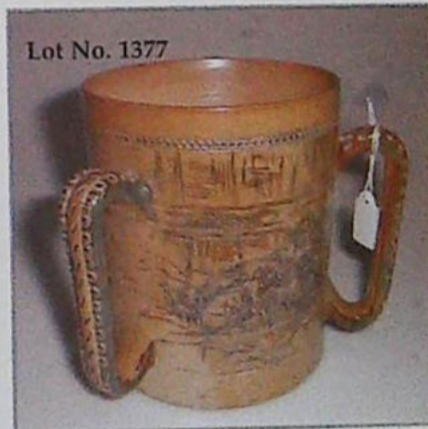
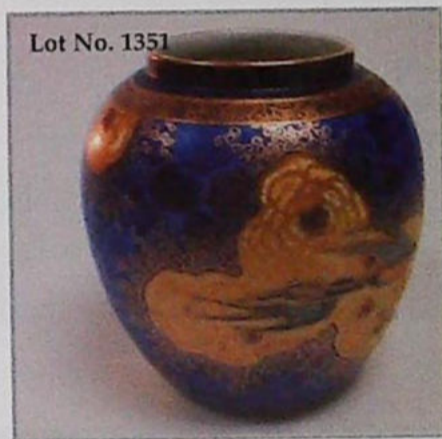
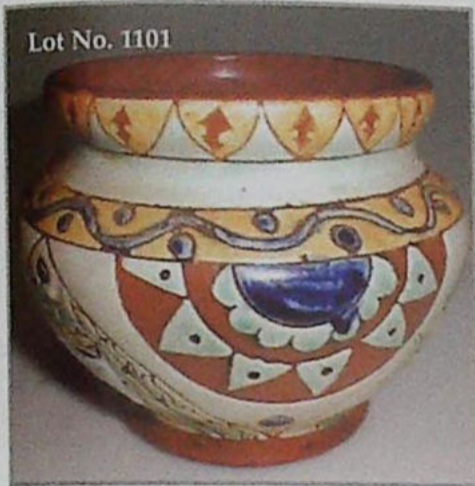
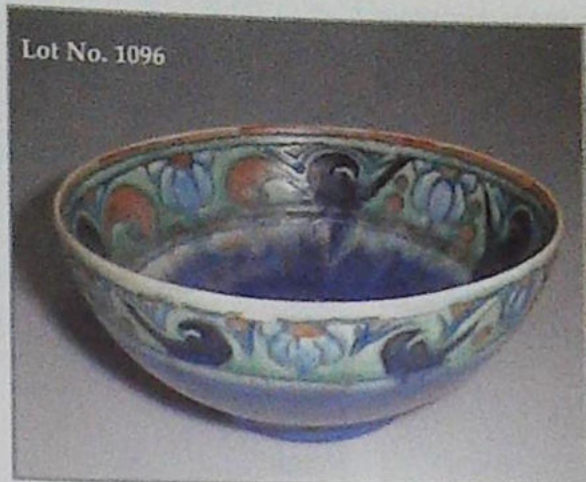
ART POTTERY, BRITISH & EUROPEAN CERAMICS

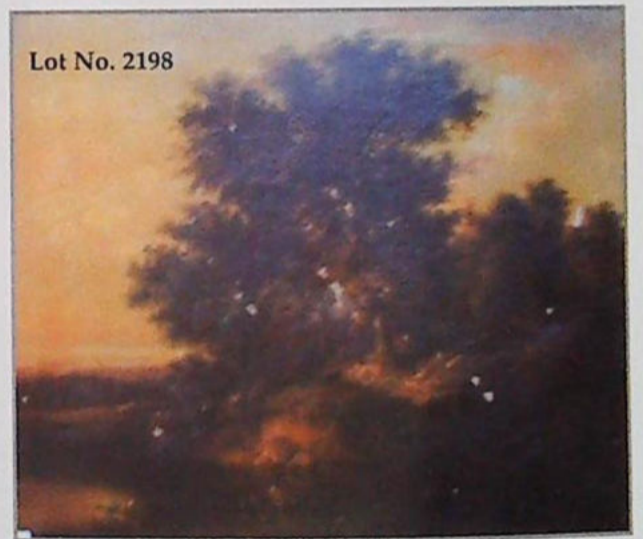
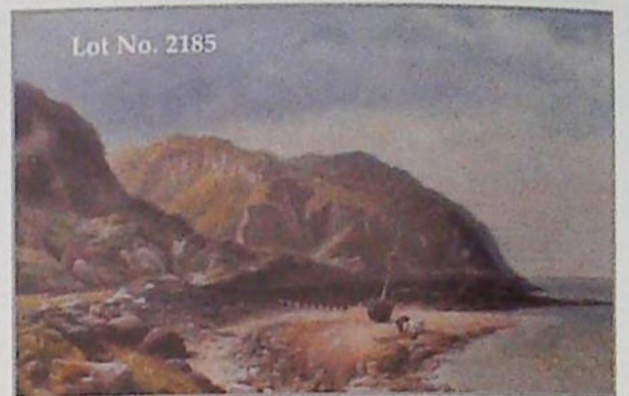
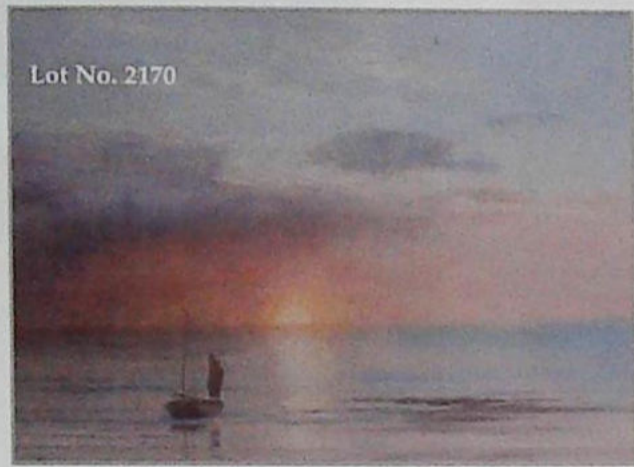
1001. A Poole Pottery Sylvan ware circular bowl, with a flared rim, the slightly ribbed body with a mottled orange glaze, impressed POOLE ENGLAND, incised 683, painted SYLVAN WARE M72, 14" diameter.
1002. A Pair of Impasto vases, of flattened ovoid form, with ribbed shoulders, decorated with apple blossom and flowers against streaky earth tones, signed E.G. impressed factory mark H & Co no. 49/2, 10¾" high.
1003. A Pilkington Pottery small jardiniere, of circular moulded form with an everted rim, decorated in a streaky green glaze, impressed mark and potting code for 1909, model no. 2817, 5½" diameter.
1004. A Pottery jug, probably designed by Christopher Dresser, of flattened circular form, with an extended neck and loop handle, the body moulded with circular medallion, decorated with red, brown, blue and yellow streaky glaze, 8" high.
1005. A Burmantofts pottery small jardiniere, the pale lilac ground intaglio moulded with floral and foliate panels, pendant from the scalloped rim, impressed marks, no. 1085, 7½" diameter.
1006. A Burmantofts vase, of ovoid form with a frill edge neck, with an overall deep yellow ground incised with small sun bursts, 6½" high.
1007. A Burmantofts Vase, with an undulating ovoid body, incised with starbursts on a deep yellow body, impressed monogram and shape no. 236, 6" high.
1008. A pair of Burmantofts faience pottery sleeve vases, moulded in relief with reeded vertical panels and starbursts, covered in a turquoise glaze, impressed marks, no. 831, 8½" high.
1009. A Burmantofts Pottery vase, of ovoid form, with a flared frill rim, highly decorated with a basket weave base and starbursts, mottled red glaze, impressed mark and shape no. 773, 6¾" high.
1010. A Wilkinson Oriflame vase, of ovoid form, with a cup shape neck, decorated with fish and weeds in colourful lustres, printed marks, 9½" high (small rim chip)
1011. A Bretby pottery vase, of circular form with a cup shape neck, on a domed circular foot, with a green lustre glaze, impressed marks no. 2135H, 12½" high.
1012. A Bretby pottery shouldered sleeve vase, with red flambe glaze, impressed mark and no. 2215, 12¼" high.
1013. A Linthorpe 'Christopher Dresser' vase, ovoid, with a raised neck, with geometric incised bands against a brown slip over green, impressed factory mark, no. 132, 6½" high.

1014. A **Linthorpe pottery wall pocket** decorated with apple blossom against a matt yellow and pink shaded ground, impressed LINTHORPE 1017, 6¼" high.
1015. A **Carter Stabler Adams Poole Pottery vase**, of baluster form, painted with a simple border design in brown against a matt unglazed body, impressed mark, painted artist's initials and shape no. D346, 4½" high.
1016. A **Carter Stabler Adams Pottery dish**, of circular form, with a pouring lip, decorated in green and purple stripes on a grey slip ground, impressed mark and initials, shape T363, 5½" diameter.
1017. A **Carter Poole Pottery Amphora shape jug**, with a loop handles, decorated with a thin cream glaze with black and yellow neck and a rudimentary banding, incised no. 14, 6" high.
1018. A **Carter Poole pottery vase**, of circular shouldered form, with three lug handles, painted with a blue and green repeat border against a matt cream slip glaze, incised mark and artist's initials, 6¼" high, 8½" diameter.
1019. A **Carter Poole pottery jug**, of ovoid form with a loop handle, the cream matt ground decorated with a simple geometric band, 5½" high.
1020. A **Pilkingtons pottery vase**, of ovoid ribbed form, decorated with green lustre and brown glazes, 7¼" high.
1021. A **Brannam terracotta beaker**, of conical form, painted and incised with fish and seaweed, and verse "From rocks and sands and barren lands, Good fortune set me free, And from great guns and women's tongues, Good lord deliver me", incised signature and dated 1916, 4¼" high (minor rim chips).
1022. A **Brannam terracotta ink well**, of compressed circular form, incised 'Don't forget to write', and flowers against a cream ground, signed Brannam Barum 1908, 3" diameter.
1023. A **Cantagalli pottery mug**, of plain circular form, with a moulded anvil shaped handle, polychrome painted with simple flower and leaf forms, between orange borders, painted mark, 7½" high.
1024. A **W.L. Baron Pottery vase**, circular with an everted rim, decorated with mottled glazes, incised Baron Barnstaple, shape no 419, 4" high.
1025. A **Linthorpe Pottery cup and saucer**, with a green glaze, impressed LINTHORPE 639, (cup chipped).
1026. A **Pilkingtons pottery vase**, circular with a flared rim, decorated with an all over green mottled glaze, impressed mark darker 1909, shape no 2651, 3¼" high.
1027. A **Royal Venton Ware pottery vase**, of ovoid form, with a moulded neck, decorated with colourful volcanic glazes, 5½" high.
1028. A **Royal Worcester Sabrina Ware spill vase**, decorated in shades of blue with a rural landscape, printed marks, date code for 1912, model 6/161, 5" high.
1029. A **Bretby pottery vase**, of circular tapering form, on a circular domed foot, with blue streaky glaze, impressed factory marks no. 2134H, 13" high.
1030. A **Candy Ware pottery vase**, of baluster form, with an everted rim, blue streaky glaze, 11¼" high.
1031. An **Ashby Potters Guild Vase**, of compressed baluster form, with an elongated neck, with a predominantly blue ground with purple and green splashes, 10" high.
1032. An **Ashby Potters Guild vase**, of inverted bell shape, the tall neck with everted rim, having a textured and mottled gun metal glaze over a streaky russet ground, impressed mark and artists monogram, 12½" high.
1033. A **Poole pottery vase**, of ovoid form with an everted rim, decorated in colours with abstract panels against a red ground, yellow interior, 6½" high.
1034. A **Poole Pottery bowl**, circular with a raised foot rim, decorated with a brown and green streaky glaze, impressed Poole, England and numbered 22, 6¼" diameter.
1035. A **Rye Pottery oval small platter**, painted with black and pink star shapes over wavy lines against a cream slip, ground raised on four small feet, impressed mark, 8¼" wide.
1036. A **Rye Pottery Circular Plate**, painted with colourful flowers against a cream slip ground, printed marks, 8" diameter.
1037. A **Salopian Pottery small vase**, of ovoid form, incised and glaze in brown with ferns, flowers and leaves, against a pale terracotta ground, impressed SALOPIAN, 3" high.
1038. A **Salopian Pottery vase**, of ovoid form, the matt blue ground incised with ferns and leaves, impressed SALOPIAN, 4" high.
1039. A **Pilkington Royal Lancastrian shallow bowl**, of circular form, decorate with deep orange spatter glaze against a yellow ground, impressed factory mark, 3½" high, 12¼" diameter.
1040. A **Pilkington Royal Lancastrian vase**, circular, decorated by Wm. S. Mycock, painted with simple plant forms against a streaky red and yellow ground, impressed and painted marks, 6" high.
1041. A **Royal Doulton Titanian pottery vase**, of baluster form with a plain smokey blue glaze, 7½" high.
1042. A **Royal Venton pottery vase**, baluster with vigorous red, yellow, buff and grey streaky glazes, printed and impressed factory marks, 7½" high.
1043. A **W.L. Baron Pottery Pot**, circular with an everted rim, decorated with toffee coloured streaky glaze, the interior green, incised Baron Barnstaple, shape no 471, 3½" high.



1044. A Candy ware pottery vase, of ovoid form with a flared rim, the slightly ribbed body decorated with pink streaky glaze, 9" high.
1045. A Wileman & Co Foley Faience pottery vase, of compressed baluster form with an everted rim, with abstract incised decoration and yellow, brown and green streaky glazes, printed factory mark and incised no. 12603, 7" high.
1046. A Wileman & Co Foley Faience pottery vase, of flattened circular form, decorated with yellow, brown and green streaky glazes against a brown moulded ground, 5" high, incised no. 12015.
1047. A Wileman & Co Foley Faience Vase, of compressed baluster form, with green yellow and brown streaky glazes within incised abstract lines, printed mark and incised no. 12065, 7½" high.
1048. A Baron pottery vase, of ovoid form, decorated with a blue streaky glaze, incised in script Baron, Barnstaple 401, 6¼" high.
1049. A Royal Doulton pottery Brangwyn Ware vase, of ovoid partly ribbed form, incised and painted with a simple pineapple design against a streaky green and pink ground, pattern no. 05078, incised no. 7935, 6" high.
1050. A Crown Ducal Spectria Flambé circular bowl, decorated with black stylized flower heads against a red flambé ground, printed marks, 9¼" diameter.
1051. A Royal Venton pottery vase, of baluster form, with colourful "Volcanic" glazes, 10" high.
1052. A Ruskin pottery vase, of shouldered tapering form, the body with neutral marble glaze, impressed RUSKIN ENGLAND 1915, 10½" high.
1053. A Ruskin Pottery vase, of circular form with a narrow moulded grey and blue lustre glazes, signed in script W. Howson Taylor, impressed Ruskin England 1932, 7½" high.
1054. A Linthorpe circular dish, designed by Christopher Dresser, of circular fluted form with streaky green glazes, impressed marks for Henry Tooth, model no. 436, 6¼" diameter.
1055. A Clement Massier pottery vase, of shouldered tapering form, with sea green streaky glaze with brown splashes, impressed marks, 5¼" high.
1056. A Baron Barnstaple wavy vase with three loop handles, green on brown scraffito body, incised Baron Barnstaple 177 to base, 6" high.
1057. A Doulton Lambeth Pottery Bowl, by Agnete Hoy, of circular form, incised with a repeat pattern of leaves, in brown against a buff ground, impressed signature and factory marks, shape no 2E, 4¼" diameter.
1058. A William Fishley Holland Pottery sleeve vase, with a moulded foot rim, decorated with a speckled green glaze, 7" high.
1059. A Fishley Holland pottery bulbous vase, with green streaky glazes, 4½" high.
1060. A Carter Stabler Adams Ltd Poole pottery vase of ribbed globular form, in dark and light brown glaze, impressed mark to base, 4½" high.
1061. A Rye pottery jug, with pinched spout and loop handle, blue and red stripe decoration, stamped paint mark to base, 4½" high.
1062. A Ruskin Pottery vase, of ovoid form, with an overall pink lustre glaze, impressed RUSKIN ENGLAND 1921, 4¼" high.
1063. A W L Baron pottery cream jug, the matt body with green and brown banding to the neck and handles, inscribed 'Be sure your pins will find you out', incised marks Baron Barnstaple 145, 3" high.
1064. A Castle Hedingham Pottery vase, of double baluster form, modelled in relief with trailing foliage between dentil and ? borders, green glaze with pink berries, 6" high.
1065. A Salopian Art Pottery vase, of ovoid form, decorated with a running brown glaze over green, 6" high.
1066. A Ruskin pottery ginger jar and cover, the crazed yellow lustre body having trailing vine decoration, impressed mark to base RUSKIN 11 POTTERY, 8½" high.
1067. A Poole pottery ginger jar, with a duck egg blue speckled glaze, incised mark 6M to underside and cover, 5¼" high.
1068. An Adamesque pottery jug, of shouldered circular design, moulded with three bosses and with integral upswept handle, decorated with dark green and ochre glaze, impressed mark, shape no 3883, 5½" high.
1069. A Matched pair of Adamesque pottery flagons, of spherical form with elongated marks and loop handles, with mask moulding, streaky green glazes, incised marks, 9½" high.
1070. A Hillstonia pottery vase, of baluster form, the lightly ribbed body decorated in orange and red with black streaks, incised HILLSTONIA ENGLAND NO121, 8¼" high.
1071. A Woods pottery jug, of baluster form, with a reeded neck and fluted body, glazed yellow with brown streaks and red highlights, 9¼" high.
1072. An Aller Vale Pottery Bachelor's teapot and two matching cups and saucers, each with streaky green glazes against a cream ground, impressed marks.





1073. A **Bretby terracotta miniature jardiniere**, with a frill rim and dimpled body, decorated with streaky glaze, 4" diameter, (rim chip).
1074. A **Linthorpe terracotta miniature vase**, of ovoid form, the brown body painted with flowers and leaves in shades of green and yellow, impressed mark and shape no. 840, 3" high (rim chips).
1075. A **Linthorpe small vase by Henry Tooth**, of ovoid form with an everted rim, the neck and shoulders glazed brown over a green ground, impressed mark and monogram, 2½" high.
1076. A **Brannam Terracotta small jug**, of baluster form, with a scroll moulded handle, incised and painted with foliage and with a verse "In Barnstaple was made this cup, fill it with milk and drink it up", against a green and cream ground, incised Brannam Basum, 3" high, rim chip.
1077. A **Royal Doulton Titanian Ware small vase**, of spherical form with a turquoise glaze, 2¼" high.
1078. A **Rye Pottery two-handled cup**, with a moulded rim, decorated with applied flower heads and leafage against a green ground, incised mark for Sussex Rustic Ware, 3" diameter.
1079. An **Elton Terracotta double Gourd small vase**, with a green streaky glaze, 3¼" high.
1080. A **pair of Bretby small vases**, of baluster form, with frill rims and annulated neck rims, decorated with green and orange glazes, 4½" high.
1081. An **Upchurch pottery vase**, of ribbed ovoid form, with a grey/blue ground, impressed UPCHURCH, 11" high.
1082. An **Upchurch pottery Vase**, of circular tapering form, with an incurving neck, the slightly ribbed body decorated with purple and green iridescent glaze, incised mark in script, 15" high.
1083. An **Upchurch pottery vase**, of tapering form, lightly ribbed, with two rudimentary handles, streaky green glaze, incised script mark, 7¼" high.
1084. An **Upchurch pottery vase**, of ovoid form, decorated with a blue running glaze over a matt grey body, incised mark, 5½" high.
1085. An **Upchurch pottery vase**, of tapering form, lightly ribbed, with two rudimentary handles, green and blue streaky matt glazes, incised script mark, 6" high.
1086. An **Upchurch pottery vase**, of circular tapering form with a knopped girdle, with a streaky green glaze over a buff ground, 5¼" high.
1087. An **Upchurch pottery vase**, of circular tapering form, the slightly ribbed vase decorated with a blue streaky glaze, impressed mark. 6½" high.
1088. An **Upchurch pottery vase**, of plain circular form, lightly ribbed, with a blue/grey matt glaze, impressed mark, 6¼" high.
1089. An **Upchurch pottery jug**, of ovoid form, lightly ribbed, with a plain loop handle, brown glaze, incised script mark, 7" high.
1090. An **Upchurch pottery pedestal bowl**, of compressed circular form, on a flared pedestal foot, with a grey streaky glaze, incised script mark, 7" diameter.
1091. An **Upchurch pottery vase**, of ovoid form, decorated with a blue/green running glaze over a mottled pink body, impressed UPCHURCH and signed P.C. 13" high.
1092. An **Upchurch pottery vase**, of plain circular form, raised on three rudimentary feet, with a brown slightly streaky glaze, incised script mark, 6½" high.
1093. A **Susie Cooper vase**, of circular form, the lower body moulded and incised with abstract foliage, green glaze, script signature, 5¼" high.
1094. A **Carter Stabler Adams, Poole pottery vase**, circular, with a moulded neck, decorated with buff, ochre and blue glazes, impressed seal mark, 6¼" high.
1095. An **Ault pottery vase**, of baluster form, with everted rim, yellow glaze, impressed AULT ENGLAND 5, 9" high.
1096. A **Crown Devon Cretian pottery circular bowl**, moulded in low relief and painted with border patterns of stylized birds and simple leaf forms against a green ground, over blue body colour, 8" diameter.
1097. A **Susie Cooper circular bowl**, the green ground incised with a flower spray, impressed marks Susie Cooper England 1732, 8½" diameter, (hairline and firing crack).
1098. A **Poole pottery vase**, of slightly tapering form, with a spattered pale terracotta glaze against a matt cream ground, impressed marks, artists initials and no A20/5, 8" high.
1099. A **Carlo Manzoni terracotta vase**, of tapering form with a knopped neck, incised and painted with a repeat band of stylized plant forms, incised initials to underside, 10¼" high.
1100. A **Della Robbia vase**, of baluster form, with a knopped neck, two-scroll handles with turquoise, green and purple streaky glaze, incised mark and artists initials E B, in a monogram, 15" high.
1101. A **Carlo Manzoni bowl**, of ovoid form, incised and painted with simple flower forms and medallions, incised script monograms and no 69, 5" high, 6" diameter.
1102. A **Della Robbia terracotta jug**, of slender tapering form, slip decorated with leaves in cream, green and turquoise against a russet ground, signed H. Pierce, 11½" high.
1103. A **Brannam for Liberty green glaze jug**, of circular tapering form with an everted rim, the neck with three applied twist handles, impressed C H BRANNAM BARUM. N. DEVON MADE FOR LIBERTY CO. 14¼" high.



Lot No. 1119

1104. A Foley Faience terracotta vase, of circular form, painted with stylized tulips against a dark green ground, incised no 11046, 4½" high, 7½" diameter.
1105. An Ault Pottery vase, of circular tapering form, with an everted rim and on raised foot, painted in black with a nocturnal scene of owls seated on tree branches looking at the moon, impressed AULT ENGLAND, 10½" high.
1106. A Ricardia pottery vase, of ovoid form, with orange and red streaky textured glaze, 7½" high.
1107. A Susie Cooper pottery bell-shaped vase, with a raised ribbed neck, all-over pale green glaze, incised signature and ref. no. 499, 9" high.
1108. A Pair of Coleorton ware pottery vases, modelled as tree trunks, with cup shaped rims, 9" high.
1109. A terracotta vase, possibly Elton, of baluster form, with an elongated neck, decorated with blue and green streaky glazes, painted T H monogram, 9¼" high.
1110. An Ault & Tuncliffe pottery vase, of slender baluster form, with a pale blue and yellow streaky glaze against a darker blue ground, impressed Aultcliffe; 8¼" high.
1111. A William Fishley Holland Pottery saucer dish, decorated with black combing on a green ground, incised script signature, 11" diameter.
1112. A Candy Ware pottery vase, of compressed rectangular form, decorated with a blue streaky glaze, 4½" high, 8" wide.
1113. An Upchurch Pottery vase, of ovoid form with an everted rim flanked by two loop handles, the slightly ribbed body with a khaki glaze streaked blue, incised script mark, 9½" high.
1114. A Crown Ducal pottery vase, of baluster form, decorated with a textured orange/green running glaze over a blue ground, printed mark and no. 129, 8½" high.
1115. A Royal Venton 'Ming' Ware pottery jug, of circular form, with the inverted waved rim, with 'lava' glaze over a red and yellow mottled body, printed and impressed marks, 6½" high, 9½" diameter.
1116. A Susie Cooper ochre pottery bowl, of circular flared form, incised externally with woodland animals and foliage, internally with a ribbed border, signed Susie Cooper England in script, 9" diameter.
1117. A matched pair of Brannam Royal Barum ware vases, of inverted baluster form, with deep yellow slip glazes, one with impressed marks, 9½" high.
1118. A Bursley Ware Pottery bowl, of octagonal form, externally painted with colourful poppy seed heads, internally blue, 8½" wide.
1119. An early 20thC pewter sleeve vase, square, moulded in relief with strapwork and mounted with Ruskin enamel medallions, 8" high.
1120. A Royal Venton 'Ming' pottery vase, of baluster form, with a colourful "Volcanic" glaze, 8¼" high.
1121. A Royal Venton 'Ming' pottery vase, of baluster form, with a colourful "Volcanic" glaze, 8¼" high.
1122. A Royal Venton vase, of ovoid form, painted with black, red and yellow volcanic glazes, and in relief with 'lava' glaze, 8½" high.
1123. A Royal Venton pottery vase, of baluster form, with a vigorous volcanic glaze of red, greys and black, 9¼" high.
1124. A Royal Venton pottery vase, of ovoid form, decorated with a vibrant streaky glaze of turquoise, red, yellow and green, 8½" high.
1125. A Royal Venton jug, of baluster form, painted with black, red and yellow volcanic glazes, 8½" high.
1126. A Pair of Candy Ware Pottery vases, of circular moulded form, with everted rims, with a grey/green mottled glaze over brown, 6" high.
1127. A W Lemon Pottery vase, of baluster form, the extended neck with everted rim, decorated a matt brown streaky glaze over a duck egg blue speckled ground, incised mark, 12½" high.
1128. A Pilkingtons Royal Lancastrian vase, of shouldered ovoid form with an everted rim, red and yellow streaky glaze, impressed marks no 2671, 10½" high.
1129. A Candy Ware pottery vase, of ovoid form, with an everted rim, the ribbed body having blue and brown streaky glaze, 9" high.
1130. A Regal Ware pottery vase, of shaped rectangular form, with polychrome streaky glaze, printed factory mark, signed N. W. Keates, 9¼" high.
1131. A Wilkinsons Oriflame Pottery vase, of ovoid form, decorated with pink, purple and yellow marbled glazes, 4½" high.
1132. A Poole Pottery vase, of ovoid form with gun metal grey lustre spatter glaze against a black ground, 9" high.
1133. A William Fishley Holland Pottery jug, circular, with a moulded loop handle, decorated with green, orange, and blue streaky and mottled glazes, incised script signature, 4¼" high.
1134. A Mintons vase, designed by John Wadsworth, of circular ribbed form, with a short conical neck and on a raised foot, with blue streaky glaze with green banding, factory mark and script signature, 7" high.

1135. A **Poole pottery vase**, circular, decorated with heavy buff and brown streaky and mottled glazes, impressed mark and painted model no's S/52/34E, 7½" high.
1136. A **Candy Ware pottery vase**, of ovoid form, decorated with green streaky glaze over a buff body, 14" high.
1137. A **Candy ware pottery vase**, of baluster form, with an everted rim decorated with brown, russet and orange streaky glaze, 14½" high.
1138. A **Bretby pottery vase**, circular with an everted rim, decorated with a pink metallic spatter glaze over red, impressed mark no. 1938F, 10" high.
1139. A **Coronet Ware Pottery vase**, of shouldered circular form, with a blue and yellow mottled glaze, printed factory mark, 8" high.
1140. A **Bretby pottery vase**, of circular dimpled form with an everted frill rim, decorated with red, yellow and green streaky glaze, no. 1062H, 3½" high.
1141. An **early 20thC pottery flask shaped vase**, with a deep pink flambé glaze, 6" high.
1143. A **pair of Candy Ware pottery vases**, of compressed circular form, with raised necks and moulded rims, decorated in green streaky glaze over a speckled cream ground, 4¾" high.
1144. A **Candy Ware pottery vase**, of baluster form, with an everted rim, blue streaky glaze, 11¼" high.
1145. A **Candy Ware pottery jardiniere**, of compressed ovoid form, decorated with a blue lustre mottled glaze shading to brown, the interior blue, 9½" high, 14" diameter.
1146. A **Candy ware pottery vase**, of ovoid form with moulded horizontal banding, decorated with a blue matt glaze, 12½" high.
1147. A **pair of Candy Ware pottery vases**, of compressed baluster form, with everted rim, mottled black against a pink ground, 9½" high.
1148. A **Candy ware pottery vase**, ovoid with an everted rim, the horizontally ribbed body having a pale blue glaze with darker blue and brown streaks, 9" high.
1149. A **Candy Ware Pottery Bowl**, the shallow circular body with an everted rim, with a blue streaky glaze, over a cream ground, 10½" high.
1150. A **Candy Ware pottery vase**, of tapering circular form with moulded neck, foot and rim, with a red mottled textured glaze, 6¾" high.
1151. A **Candy Ware pottery vase**, of slender baluster form, the exterior with a pale blue, pink and green streaky glaze, the interior mottled green, 6" high.
1152. A **Bretby two-handled vase**, of ovoid form, with an extended tapering neck flanked by two integral handles, with a rich red flambé glaze, impressed mark, model no. 1769, 15" high.
1153. A **Wilkinson Ambeston Ware spherical vase**, decorated with a marbled lustre glaze, 7" high.
1154. A **Candy Ware earthenware bowl**, of incurving oblong form, with streaky blue, purple and turquoise glazes, 8" wide.
1155. A **Candy Ware pottery bowl**, of circular form, with an everted rim and ribbed shoulder, decorated with a blue and brown mottled glaze, 6" high.
1156. A **Candy Ware pottery vase**, of swept circular form, with a slightly everted rim, streaky brown/grey glaze, 9¼" high.
1157. A **Rye Pottery small vase**, with a green mottled glaze, 3" high.
1158. A **Bretby terracotta large vase**, of oblong form, having a dark blue banded neck over a green, brown, blue, and ochre streaky glaze, on raised foot, impressed marks and no. 1548, 17" high.
1159. A **Late 19thC pottery jardiniere**, of circular moulded form, having a petal rim, with red and green streaky glazes over a cream ground, 14" diameter.
1160. A **London School of Art pottery vase by E. Cooper**, of ovoid form, with a conical neck, incised with simple leaf forms and a treacle glaze, 7¼" high.
1161. A **Winchcombe pottery slipware dish**, the rounded oblong shape decorated internally with dark brown swirls and stripes against an ochre ground, impressed seal marks, 9½" wide.
1162. A **Winchcombe Pottery Baking Dish**, oval, decorated with a cream slip against a dark brown ground, 8½" wide.
1163. A **Winchcombe pottery terracotta jug**, baluster, inscribed "WINCHCOMBE", against buff and brown slip glazes, impressed seal mark, 8¼" high.
1164. A **Winchcombe pottery slip ware dish**, probably by Michael Cardew, of flattened oval shape, decorated with black combing against an ochre ground, 13½" wide.
1165. A **Winchcombe pottery wall vase**, of cup shape, with a hanging loop, painted with a simple plant form against a green ground, seal mark, 5" high.
1166. A **Winchcombe pottery jug**, of ovoid form, with a moulded neck and loop handle, decorated with a brown streaky glaze, impressed seal mark, 4¾" high.
1167. A **Winchcombe Pottery terracotta circular vase**, painted with a continuous band of limited features in brown and buff against a green ground, seal mark, 7¼" high.
1168. A **Winchcombe Pottery terracotta lidded pot**, of circular form, lip glazed in buff and dark brown, with a simple wavy line border, seal mark for Michael Cardew, 3" high, 4" diameter.
1169. A **Winchcombe Pottery terracotta preserve pot cover**, with simple slip decoration and glazes, seal marks, 3¼" high.
1170. A **Winchcombe pottery dish and cover**, circular, the domed cover with bun finial, decorated in brown and ochre glazes, seal mark, 5" diameter.

1171. A Winchcombe pottery terracotta lidded pot, of ovoid form, with a domed cover and single handle, decorated green and brown mottled glaze, the cover with a wavy line border, seal mark, 5" high.
1172. A Winchcombe pottery slipware circular stand, decorated with dark brown teardrop motifs against a pale brown ground, impressed Sidney Tustin seal mark, 6" diameter, (small rim chip).
1173. A Winchcombe Pottery terracotta circular dish, a smaller dish, an oval bowl and a terracotta egg cup, each with slip decoration (4).
1174. A Dunmore pottery vase, of ovoid form, the raised neck flanked by two loop handles, rich ochre glaze, impressed DUNMORE, 5½" high.
1175. A Dunmore pottery vase, of ovoid form, with three loop handles, decorated with a green glaze, 6" high.
1176. A Dunmore pottery vase, of baluster form with dimpled sides, brown and green glazes, impressed DUNMORE, 6¼" high.
1177. A Dunmore pottery two-handled vase, of spherical form with a cup shape neck flanked by two simple loop handles, with green and brown streaky glazes, impressed DUNMORE, 6¼" high.
1178. A Dunmore pottery jug, of spherical form with a raised neck and loop handle, with turquoise glaze, impressed DUNMORE, 5" high, (minor rim chips).
1179. A Dunmore pottery jug, of circular form, with flared neck and loop handle, decorated with a rich yellow glaze, impressed mark, 8" high.
1180. A Dunmore Pottery two-handled vase, circular with a conical neck, the body with a three-line girdle, glazed in pale blue, impressed DUNMORE, 5½" high.
1181. A Dunmore pottery two-handled vase, of ovoid form, decorated with a green streaky glaze over a brown and orange combed ground, 5¼" high.
1182. A Dumore pottery small jardiniere, of cauldron form, with two loop handles and on three short feet, with blood red glaze, impressed DUNMORE, 5¼" high.
1183. A Dunmore Pottery paté pot and cover, of circular banded form, the cover with ball finial, the body with two pierced lug handles, impressed DUNMORE, 3" high.
1184. A Dunmore Pottery small bowl, circular with an everted rim, with a shaded ochre glaze, impressed DUNMORE, 3" diameter.
1185. A Dunmore Pottery Pickle dish, of leaf shape with a loop handle, decorated with green and brown streaky glaze, impressed DUNMORE, 2¼" high.
1186. A Holyrood pottery jar, with blue and green streaky glaze. 4" high.
1187. A Charles Vyse stoneware bowl, of ovoid form, decorated with a purple and blue streaky glaze, incised marks C. VYSE CHELSEA, 4¼" high, 6" diameter.
1188. A Reginald Wells pottery vase, of baluster form, decorated with a blue textured glaze, impressed mark COLDRUM CHELSEA, 7¼" high (rim chip).
1189. A Reginald Wells stoneware vase, of circular form with a flared rim, the neck with two lug handles, mottled red glaze, impressed SOON, 7½" high.
1190. A Reginald Wells jar, of globular form, with a heavily pitted grey glaze, running pink over the grey, incised initial mark and impressed Chelsea, 5" high.
1191. A Reginald Wells circular bowl, decorated with a pink, blue and grey streaky glaze, impressed COLDRUM CHELSEA, 9" diameter.
1192. A St Ives terracotta vase, of circular form, decorated with a dark green and black glaze, seal mark for Sylvia Fox Strangways, 5½" high.
1193. A St Ives Stoneware jar, circular, decorated with heavy buff and brown streaky and mottled glazes, seal marks, 6" high.
1194. A St Ives terracotta vase, of ovoid form, decorated with a rich treacle glaze, seal mark for Sylvia Fox Strangways, 6¼" high.
1195. A St Ives stoneware vase, of ovoid form, glazed in shades of brown, black and olive, impressed factory mark and seal mark for Sylvia Fox Strangways, 7" high.
1196. A St Ives Pottery spherical terracotta vase, decorated with a two-tone brown glaze, the lower body unglazed, seal marks, 6" high.
1197. A St Ives Pottery Vase, of circular tapering form, with earthy glaze, seal mark for Sylvia Fox - Strangways, 8¼" high.
1198. A St Ives terracotta vase, of ovoid form, decorated with brown and yellow glaze, seal mark for Sylvia Fox Strangways, 7" high.
1199. A St Ives Pottery Vase, of ovoid form, lightly glazed with buff and brown slip, impressed seal marks, post 1921, 7¾" high (cracked).
1200. A St Ives [vase], with a mottled dark blue glaze, incised initials for Sylvia Fox - Strangways, 2" high.
1201. A St Ives pottery spherical vase, painted with a dark brown abstract against a lighter brown ground, incised F S monogram, 4" high.
1202. A St Ives Pottery Vase, of ovoid form, slip glazed in, grey against white, seal mark for Sylvia Fox - Strangways, 6" high.
1203. A St Ives Pottery bowl, of circular form, decorated with green abstract plant forms and cream slip, seal marks for Sylvia Fox Strangways, 3" high, 5" diameter.
1204. A St Ives pottery bowl, of ovoid form, painted in brown with foliate bands against a buff ground, seal monogram for Sylvia Fox Strangways, 5" high, 6" diameter.

1205. A **St Ives stoneware jar**, spherical, the slightly ribbed body with a simple brown design over a paler brown ground, seal mark for Sylvia Fox Strangways, 5" high.
1206. A **St Ives Pottery bowl**, in the manner of Bernard Leech, of circular form, with dark brown abstract decoration against a pitted grey ground, 4 1/4" high, 6 1/2" diameter.
1207. A **St Ives pottery bowl**, of circular footed form, decorated with dark brown abstract motifs between faint blue lines against a neutral speckled ground, seal mark, 5 1/2" diameter.
1208. A **St Ives stoneware coffee pot and cover**, of circular ribbed form, with a dished cover and loop handles, covered in a brown streaky glaze, seal mark, 7 1/4" high.
1209. A **St Ives pottery mug**, with a moulded scroll handles, decorated with a brown streaky glaze, seal mark, 4 1/4" high.
1210. A **St Ives Pottery mug**, of circular tapering form, with a capped scroll handle, pale green speckled glaze, seal mark, 4 1/2" high.
1211. A **Crowan Pottery mug**, painted with two wavy line and dot borders against a brown ground, seal marks, 5" high.
1212. A **Bulmer terracotta vase**, of shouldered ovoid form, slip decorated against a dark brown ground, signed M E BULMER OCT 1949, 6" high.
1213. A **Burmantofts Faience wall plate**, moulded in low relief and painted with blossom against a blue ground, impressed mark and model no 96, 10 1/2" diameter.
1214. **Two Pottery jugs by Peggie E Foy...** each painted with two figures of girls in traditional national dress and flowers, painted marks, 4 1/2" high.
1215. An **S & E Collier terracotta vase**, of circular form with an everted rim, mounted with three loop handles, decorated with a green glaze, 6 1/2" high.
1216. A **S & E Collier Silchester Ware terracotta two-handled vase**, of circular tapering form, with an everted rim, decorated in a dark brown metallic glaze, impressed mark and no. 409, 8" high; another example, no. 206, 6" high.
1217. A **S & E Collier Silchester Ware terracotta jug**, of baluster form, with a scroll handle, decorated with a dark brown metallic glaze, impressed mark and no. 340, 6" high. Another example, no. 439, 7 1/4" high.
1218. A **S & E Collier Silchester Ware terracotta bowl**, circular, with an inverted rim, decorated with dark brown metallic glaze, 8 1/2" high; another example, 8 1/2" diameter.
1219. A **S & E Collier Silchester Ware terracotta jug** of baluster form with a loop handle and pinched spout, decorate with a dark brown glaze, impressed marks, incised 254, 8" high, (rim chip)
1220. A **S & E Collier Silchester Ware terracotta vase**, of ovoid form, impressed mark, 10" high.
1221. A **S & E Collier Silchester ware terracotta two-handled vase**, of baluster form, decorated with a green lustre glaze, impressed mark no. 260, 7 1/4" high.
1222. A **S & E Collier Silchester Ware terracotta vase**, of baluster form, with an everted rim, decorated with green and blue streaky glaze, impressed mark and no. 240, 7" high.
1223. A **Roger Guerin terracotta flagon**, of inverted baluster form, with a narrow neck and loop handles, the body with an applied figural panel and incised with fleur de lis on a mottled buff ground, impressed factory mark and script signature, 9" high.
1224. A **Roger Guerin saltglaze jug**, of circular form, with a moulded rim and moulded loop handle, decorated with an applied shield medallion flanked by fleur de lis, on a streaky blue and brown ground, signed Guerin, no. 29D, 8 1/4" high.
1225. A **Roger Guerin stoneware flagon**, of baluster form, having an applied moulded figural medallion flanked by incised fleur de lis panels, with brown and buff glaze, incised signature and compressed mark, no. 182, 9 1/2" high.
1226. A **Roger Guerin stoneware flagon**, of rectangular dimpled form, with a scroll handle, decorated with blue and brown streaky glazes, signed R Guerin, 8 1/2" high.
1228. A **Roger Guerin pottery vase**, of squat baluster form, with a loop handle and moulded rim, decorated with an applied shield medallion and incised hatched panels, in brown and grey glazes signed R Guerin in script, no. 33/C, 6" high.
1229. A **Roger Guerin pottery jug**, of circular form, with a scroll handle, the body with an applied moulded medallion, and incised with hatched panels, glazed in shades of brown, russet and cream, signed in script guerin 81E, 9" high.
1230. A **Roger Guerin stoneware mug**, with an annulated neck rim and loop handle, applied figural medallion against a blue, buff and brown incised body, signed in script and no. 81A, 4 1/4" high.
1231. A **Roger Guerin pottery pot and cover**, of baluster form, with a blue streaky glaze, the cover with bun finial, incised signature and no. 4041C, 8" high.
1232. A **Roger Guerin stoneware vase**, of ovoid form, with an applied everted neck, decorated with green and blue running glaze over a mottled buff ground, signed Guerin, no64/B, 7 1/4" high.
1233. A **Roger Guerin pottery vase**, of ovoid form with an extended neck and everted rim, decorated with green, buff and black streaky glazes, incises script mark, 10" high.
1234. A **Roger Guerin stoneware two-handled vase**, of baluster form, decorated with blue and brown streaky glazes, signed Guerin no. 109/C, 8" high.

1235. A Roger Guerin stoneware vase, of ovoid form, with a moulded neck and foot rim, decorated with grey, brown and blue streaky glazes, signed R Guerin no 917/C, 8½" high.
1236. A Roger Guerin pottery dish, of irregular circular form, moulded in relief with a lizard, 4¼" diameter.
1237. A Pair of Van Briggie stoneware vases, of moulded circular form, with graduated blue/green glaze, incised script mark, 7¼" high.
1238. A Nowell pottery vase, of baluster form, with a buff, brown and green streaky glaze, incised C D Nowell PRESTBURY, 9" high.
1239. A Nowell Pottery vase, of ovoid form with a blue streaky glaze, incised C.D. Nowell, PRESTBURY, 7" high.
1240. A Nowell pottery vase, of ovoid form, with a pale blue glaze streaked with purple, incised C D Nowell PRESTBURY, 6½" high.
1241. A Nowell pottery vase, of ovoid form with a blue streaky glaze, incised mark C D Nowell, PRESTBURY, 5" high.
1242. A Nowell pottery vase, of ovoid form, decorated with green and buff glaze, incised mark, 6½" high.
1243. A Nowell pottery vase, of ovoid form with an everted rim, green streaky glaze, script mark C D NOWELL Disley, 6" high.
1244. A Nowell pottery vase, of compressed circular form, with blue, green and brown streaky glaze, incised mark C D Nowell, DISLEY, 5½" diameter.
1245. A Nowell Pottery bowl, of circular form, decorated with a green running glaze over a pale blue body, 6" diameter.
1246. A Nowell pottery bell shaped bowl, decorated with a purple streaky glaze, incised C D Nowell PRESTBURY, 3½" high, 5¼" diameter.
1247. A Nowell pottery vase, circular with an everted rim, with a cream and crackle glaze, 4½" high (rim chip).
1248. A Nowell pottery jug, of circular form, with a moulded neck and scroll handle, decorated with a streaky green glaze, incised C D Nowell, Disley, 5¼" high.
1249. A Nowell pottery vase, of circular moulded form, with a pale green glaze, 3½" high.
1250. A William Fishley Holland Pottery jug, of circular ribbed form, with a moulded loop handle, decorated with a green streaky glaze, incised script signature, 8" high.
1251. A Cantagalli Plate, painted with flowerheads, leaves and sprigs against a yellow ground, within a hatched border, painted mask and initialled T G, 8" diameter.
1252. A Hillstonia pottery vase, of ovoid form, painted with a brown and black streaky glaze over a speckled matt body, 5½" high.
1253. A Hillstonia pottery vase, of ovoid form, with a mottled buff ground with grey streaks, 5¼" high.
1254. A Hillstonia pottery vase, of ribbed tapering form with a moulded neck, with a streaky glaze against a buff ground, 7¼" high.
1255. A Candy Ware pottery vase, of circular tapering form, marbled blue and grey against a pale pink ground, 7" high.
1256. A Candyware Pottery vase, of baluster form, with a buff speckled glaze, 2¼" high.
1257. A Candy Ware Pottery Small vase, of circular form, decorated with blue and brown running glaze over a mottled ground, 3½" high.
1258. A W L Baron Pottery jug, the dark brown ground incised and painted with stylized flowers, 3¼" high, a Baron pink ground egg cup and a Brannam Pottery small pot with incised and painted decoration, (small chip) (3).
1259. A Candy Ware ashtray commemorating the coronation of Queen Elizabeth II; another, 'Devon Fires' (2).
1260. A Modern Spode Pottery hors d'oeuvre's dish, of shaped oblong form, with four divisions, painted with fishes and crustacean, 13¼" wide.
1261. A Vera Tollow pottery vase, of ovoid form, with a moulded neck, the slightly ribbed body decorated with pink streaky glaze, 13½" high.
1262. A Vera Tollow terracotta vase, of ovoid form, the blue slightly ribbed ground slip decorated with white stars between vertical lines, 11½" high.
1263. A Vera Tollow stoneware preserve pot and cover, decorated with abstract birds on a grey ground, 4" high.
1264. A 19thC glazed earthenware jug (AF) 7½" high.
1265. A Eugene Baudin bottle vase, having blue bottle neck and yellow streaked satin mat body with loops, 7" high
1266. A pair of Ewenny Pottery jugs, of circular tapering form, with grey and brown mottled glaze, 5¼" high, incised Ewenny Pottery, Wales
1267. An Elton type pottery vase, with a swollen neck over a tapering circular body, mounted with three inverted S shape handles, decorated with blue, brown and green streaky glaze, 7" high
1268. A Glyn Colledge for Denby pottery ewer, of baluster form, painted with simple flower and leaf forms against a buff, between brown borders, 8" high
1269. A Glyn Colledge for Denby shallow pottery dish, painted with leaf forms against a neutral ground, within a scroll border and brown rim, 8" diameter; another example, with two reeded loop handles, painted with simple flowers and leaves, 8½" over handles (2)



Lot No. 1274

1270. A Doulton stoneware vase, of shouldered form, decorated by Hannah Barlow, with cattle in a landscape, within applied hob nail borders, scroll and stiff leaf bands, the ogee neck with dentil detail, impressed and incised marks, dated 1878, 8 3/4" high (some restoration to the neck)
1271. A Royal Doulton figure of Sir Winston Churchill, HN3057, modelled by Adrian Hughes, 10 1/2" high
1272. A Royal Copenhagen Christmas plate, 1910, printed and painted factory marks, numbered 37, 6" diameter
1273. A modern Royal Dux figure of a blue feathered parrot perched on a pedestal, 16" wide, pink triangle and printed marks.
1274. A Beswick Beatrix Potter figure, Duchess with flowers, G.B.S, model no. 1355, produced between 1955/1967, 3 1/4" high
1275. A Poole pottery posy vase, of circular form with a broad everted rim, painted with simple flowers against a cream ground on a pink slip, impressed Poole England, no 163, 5 1/4" diameter
1276. A Royal Winton pottery vase, of ovoid form, decorated with tulips and other flowers against a green stippled ground, 4 1/4" high
1277. A Wemyss biscuit jar and cover, of circular form, painted with pink cabbage roses and leaves, the slightly domed cover with button finial, impressed and painted script marks, 4 1/4" high, 5" diameter
1278. A pair of Worcester slender vases, painted by Jas Stinton with pheasants in landscapes, date code for 1937 model no. 2491, 5 1/2" high (heavily restored)
1279. A Staffordshire pottery coffee service, by Gibson's painted and gilt with a geometric design against a black ground, comprising coffee pot, four cups and saucers, cream and sugar
1280. A Royal Worcester pin tray, of rounded rectangular form, painted with fruit in a landscape, signed E. Townsend, date code for 1933, 4" wide
1281. A Royal Worcester pin tray, of rounded rectangular form, painted with fruit in a landscape, signed E. Townsend, date code for 1933, 3 1/2" diameter
1282. A Staffordshire pottery fish service, by Shorter & Sons, Stoke-on-Trent, each piece modelled as a flat fish and glazed in peach, green and black, comprising a large serving plate, six plates and a sauce boat and stand
1283. A Continental pottery celestial wall plaque, modelled in relief as a grinning face mask depicting the sun, semi enclosed to the side with a lunar face mask, clouds and comet below, impressed numerals 85 verso, 18" high
1284. A pottery posy vase modelled as a swimming duck, glazed in naturalistic colours, impressed no. 5594, 7" wide
1285. A Staffordshire pottery small jardiniere, in turquoise glaze, moulded in relief with shells and seaweed, 6 1/2" high, with an associated hardwood stand
1286. A Royal Crown Derby Old Imari table lamp base, painted and heavily gilt in typical Japan palette, pattern no. 1128, 11" high
1287. A Franklin Mint porcelain table ornament, The Mallard, modelled as a duck in flight over water surrounded by rushes and a tree trunk, 12" high
1288. Spare Lot
1289. A Wemyss pottery two-handled vase, of squat circular form, painted with pink roses against a yellow, blue and green streaky ground, 5 1/2" high, 10 1/2" over handles
1290. A Majolica diamond-shaped teapot, the quilted body with leaf detail and bamboo moulded handle, the cover with a figural finial, 8" high
1291. A Wedgwood majolica pedestal comport, with a pierced border, supported by three entwined dolphins, the heads resting on a tricorner plinth with reeded border, 7" high, 9 1/2" diameter
1292. A Royal Doulton figure 'The Broken Lance', HN2041, 9" high
1293. A Moorcroft pottery ashtray, tube-lined and painted with a single pink camelia against a rich blue ground, impressed factory marks, 8 1/4" wide
1295. A Royal Stanley Ware pottery vase, of circular tapering form, decorated with stylized flowers against a deep blue ground, 8 1/4" high; a fruit bowl, externally decorated with fruits and leaves, 9 1/2" diameter; a shallow circular dish, similarly decorated, 8" diameter (3)
1296. A Beswick figure of a Swish Tail Horse, first version, model no 1182, grey gloss, by Arthur Gredington, 8 1/4" high
1297. A modern Dresden porcelain figure group of a dancing couple, he in a green frock coat and pink breeches, she in a cream and pink flounce lace dress, on a rococo scroll moulded base, 8 1/2" high; a pair of German porcelain ribbon plates, polychrome printed with assorted fruits, 8 1/2" diameter
1298. A Spode porcelain loving mug, no 121 of a limited edition of 500, commemorating the silver wedding in 1972 of Queen Elizabeth II and the Duke of Edinburgh, painted and gilt with the Royal Crests and two sepia profile portraits with scrolling foliage, the C scroll handles with acanthus caps, 6 1/4" high; together with certificate

1299. Spare lot
1300. A pair of Delft tiles, painted in manganese with simple flower forms in vases, 5" square, within a wooden frame
- 1300A. Two late 19thC pictorial tiles, of two young children crying over a broken vase, printed in brown and hand coloured, 6" square
1301. A set of six terracotta encaustic tiles, each decorated with differing medieval characters, 6¼" square.
1302. Three Wedgwood Tiles, moulded in high relief with strapwork, one with the face mark of Elizabeth I, the other probably Darnley, 6" square.
1303. A Pair of Pilkington Tiles, each painted with fish, 5½" square, in an oak frame.
1304. A Minton Hollin & Co majolica frieze tile, with stylized anthemion and rondel decoration, 8" square, pattern no 145B.
1305. A Minton's Art Pottery Tile, painted in the classical manner with an urn on a face mask pedestal against an orange ground within a blue border, 8" square.
1306. An unmarked tile, tubelined and painted with a two masted sailing ships on a green sea, 6" square.
1307. A Cambell Tile, moulded in relief and painted with a sheep and standard, 6¼" square.
1308. Two Victorian tube-lined floral tiles, 6" square.
1309. A Maw & Co encaustic four-tile Royal Coat of Arms, with VR and within crowned belt with Honi Soit Qui Mai Y Pense, 12¼" square, (one tile is of slightly deeper dimension).
1310. A Delft Tile, painted in blue with a view of buildings in a landscape, foliate spandrels, 5" square.
1311. A majolica Tile, oblong, moulded and painted with a Tudor Rose and enclosed by foliate scroll corners, 6 x 12".
1312. A set of six Mintons moulded tiles, each centred by a floral motif within quatrefoil, dot borders, 4" square.
1313. Two Impasto floral tiles, and another by Craven, Dunnhill & Co, Jackfield
1314. A Maw & Co tile, painted with fish and seaweed, 6" square (some glaze loss to right hand corner).
1315. A set of four Minton & Co Posin floor tiles, 6" square.
1316. Nine various tiles by Minton, Hollins & Co, 6" square.
1317. Four various floor tiles, by Minton & Co, 6" square
1318. Three (2+1) blue and gold floor tiles by Minton & Co, 6" square
1319. Two black and white floor tiles by Minton & Co, 6" square.
1320. Eleven various floor tiles by Maw & Co.
1321. Eleven various tiles by The Campbell Brick & Tile Co.
1322. Three various tiles, Webb's Worcester, Wedgwood and Copeland.
1323. Eleven various tiles, Ambergate Derby, Minton Taylor, Godwin Hereford.
1324. Nine early 20thC Art Nouveau tiles, moulded in low relief and glazed with a purple iris and green foliage, 6" square
1325. Seven early 20thC tiles moulded in low relief and glazed with purple narcissus within scrolls against a yellow ground, 6" square
1326. Six early 20thC tiles, printed and painted with stylized flowers and foliage against a cream ground, 6" square
1327. Four early 20thC tiles, moulded on low relief and decorated with stylized thistles against a pale turquoise ground, 6" square
1328. Six early 20thC tiles, printed with Christmas roses around a cruciform design, 6" square
1329. Six Mintons tiles, printed in colours with a repeat foliate design within trellis, 6" square
1330. Seven early 20thC tiles, printed and painted with stylized flowers and foliage in the Art Nouveau manner, 6" square
1331. A quantity of early 20thC tiles, various designs, approximately 26
1332. A Victorian pottery mug, commemorating the 60th reign of Victoria, printed in blue with a profile portrait within an oval flanked by heraldic lion and unicorn, opposing biog. cartouche, 3¼" high; a pottery mug commemorating the marriage of the Prince of Wales and Princess Alexandra, 1863, 3½" high (repaired)
1333. A Fell pottery meat plate, moulded with gravy channels and well, printed in blue with a river landscape within a wild rose border, c.1840, 20¼" wide
1334. An English porcelain dessert plate, the well gilt with a foliate medallion within a pierced border with gilt decoration, 9½" diameter; a Minton's cabinet plate, enamel and gilt with a songbird on a berried branch against a pale blue ground, within a pierced interlinked floral border, 9½" diameter
1335. A 19thC porcelain Campagna vase, with two mask and loop gilt handles, painted with floral sprays within gilt reserves against an apple green ground, gilt with foliate scrolls, fern and medallions, on a circular foot, 6¼" high, faux Derby marks to underside
1336. An 19thC pottery small mug, printed in blue with a figural landscape vignette, 2½" high; a mid 19thC copper lustre pottery coaster, with rudimentary mask handles and green banding, 4" diameter (2)

1337. A Meissen porcelain sauce tureen, with integral stand and domed cover, painted with Deutsche Blumen, within gilt scroll borders, the cover with entwined rococo scroll finial, 7" high, cancelled blue crossed swords
1338. A 19thC Staffordshire pottery figure group, of a theatrical figure with a deer, probably Esmeralda, 11" high; a Staffordshire pottery figure on horseback, 15" high (repaired) (2)
1339. A pair of 19thC Staffordshire pottery seated spaniels, with separated front leg, with copper lustre splashes, 8 1/4" high (one repaired)
1340. A 19thC Staffordshire pottery figure group of a cow and farm hand, on a moulded oval base, 8 1/2" high
1341. A pair of 19thC Staffordshire pottery seated Spaniels, with iron red splashes, 8 1/2" high, (one cracked)
1342. A pair of 19thC Staffordshire pottery seated spaniels, with black splashes and gilt collar and chain, 12" high
1343. A 19thC Staffordshire pottery seated spaniel, with black splashes and gilt collar and chain, 10 1/2" high; another example, 9" high (cracked)
1344. A Wemyss pottery toilet bowl, painted with apple blossom sprays, within green borders, 15 1/4" diameter, impressed factory marks
1345. A Doulton vase, printed in blue with a view of Porchester Castle, between deep blue borders gilt with foliage, 10" high
1346. A Coalport Hampton two-handled boat shaped bowl, with moulded and gilt scroll borders, painted with stylized birds in landscape and an opposing floral spray, both within gilt reserves, signed W. Waterson, against a deep blue ground, on four scroll feet, early 20thC, 13 1/2" wide
1347. A pair of 19thC pearl ware soup plates printed in blue with formal landscape, entitled "Etrusiam Greek Vases", 9 1/2" diameter
1348. An extensive Paragon bone china dinner and tea service, decorated in the Rockingham pattern, including 12 tea plates, numerous cups and saucers in two sizes, tureens, soup bowls, dessert dishes, tea pots, sugar bowl, cream jugs, coffee pot, sandwich and cake plates, over 100 pieces
1349. A pair of early 20thC German porcelain figures of a gallant and his companion, both in 18thC costume, glazed in brown with gilt highlights, 8 1/2" high
1350. An English porcelain large plate painted with pink cabbage roses with gilt foliage, within a moulded rim with gilt dentil border, pattern no 3785, 9" diameter; another plate, painted with floral sprays against a peach ground, 9" diameter; two porcelain tea cups; a cup and saucer and other ceramics



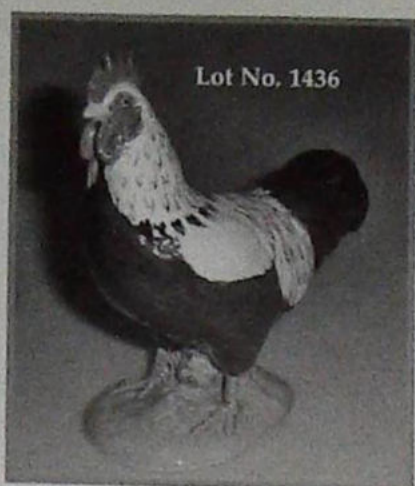
1351. A Carlton Ware spherical vase, painted and gilt with swallows and clouds against a blue slightly raised mottled ground, 7" high.
1352. A Carlton Ware hexagonal dish, painted with shamrocks within faux panels against a white ground, 9 1/2" wide.
1353. A Carlton Ware Rouge Royale tea pot, of oval panelled form, enamelled and gilt with Chinese landscapes, 7 1/4" high.
1354. A Carlton Ware oval dish, enamelled and gilt with wading storks by a tree, against a stippled blue ground, gilt lug handles, 10 1/2" wide.
1355. A Carlton Ware Rouge Royale water jug, of oval panelled form, enamelled and gilt with Chinese landscapes, 7" high.
1356. A Carlton Ware red lustre dish, of oval form with moulded borders, painted and gilt with Chinese lanterns, bamboo, dragon fly, 12" wide.
1357. A Carlton Ware green lustre dish, of oval form with waved border and moulded handle raised to one end, enamelled and gilt with a Chinese figural landscape, 12" wide.
1358. A Carlton Ware white-ground ovoid vase and cover, printed in terracotta with celestial dragons within a circle, another ovoid, the domed cover with clouds, 7 1/2" high.
1359. A Carlton Ware blue lustre vase, of baluster form with an elongated neck with everted rim, enamelled and gilt with Chinese pavilions, figures and flowering trees, 11" high.
1360. A Carlton Ware Rouge Royale vase, of circular slightly tapering form, enamelled and gilt with a spider's web, butterflies and vegetation, 7" high.
1361. A Bursley-Ware pottery vase, designed by Charlotte Rhead, of baluster form with an everted rim, painted in blue with celestial dragon and clouds between lappet borders against a grey slip ground, pattern no. T165, printed factory mark Bursley-Ware Charlotte Rhead England, 9 1/2" high.
1362. A Dennis China Works pottery charger, designed by Sally Tuffin, painted with a colourful cockerel against a pale brown ground, signed with artists initials and no.23, 14" diameter.

1363. A Dennis China Works pottery vase, of inverted baluster form, designed by Sally Tuffin, incised and painted with three comical monkeys against a green leafy ground, signed with artists initials, no.3, 5½" high.
1364. A Dennis China Works pottery jug, of baluster form with a loop handle, incised and painted with an Egyptian Pharaoh bird against an ochre ground, signed with artists initials and no.2, 9¼" high.
1365. A Dennis China Works pottery vase, of baluster form, designed by Sally Tuffin, incised and painted with harebells, celandines and leaves, signed with artist's initials and no. 33, 4" high.
1366. A Royal Doulton Archives Chaozhou Bowl, of inverted bell shape, decorated with a red Oriental Sung Glaze, limited edition, no. 53/300, 7" high.
1367. A pair of Royal Doulton two-handled vases, painted by Charles Hart, with clusters of iris and leaves, highlighted in gilt, against a matt ground, 10" high.
1368. A Doulton Burslem two-handled vase, baluster with an elongated neck and scroll handles, the body painted with apple blossom against a matt ground. 9" high.
1369. A Doulton Lambeth Impasto bottle vase, by Rosa Keen, decorated with pine cones against an ochre ground, 9¼" high.
1370. A Pair of Doulton Lambeth Impasto baluster vases by Lizzie Houghton, decorated with cream hollyhocks against a terracotta ground, no. 465 and artist's initials to underside, 13½" high.
1371. A Royal Doulton Shakespeare series Ware sandwich plate, with fluted ends, printed in colours with Hamlet in a landscape, 13¼" wide.
1372. A pair of Doulton Slaters Patent ovoid vases, enamelled and gilt with flowers against a shaded yellow ground, between foliate borders, 12½" high.
1373. A Doulton Lambeth stoneware small jug, incised and painted with a band of brown scrolling foliage against a stippled ground, over a blue foliate lower border, silver rim, Birmingham, 1878, 3¼" high.
1374. A Doulton Lambeth stoneware tyg, decorated with three blue foliate panels in low relief, against a streaky brown body, 6" high.
1375. A Doulton Lambeth stoneware vase, of compressed baluster form, with an elongated knopped neck, incised and painted in green, yellow and gilt with bands of Persian style scrollwork, 8" high.
1376. A Royal Doulton Titanian figure "Blighty", designed by E.W Wight, circa 1919, a model of a 1st world war soldier, returning home on a tilted circular base, 11½" high.
1377. A Doulton Lambeth stoneware tyg by Hannah Barlow, incised with three panels of dogs in landscapes, signed to underside with initials and factory stamp, dates 1876, 6¾" high.
1378. A pair of Royal Doulton 'Natural' foliage-ware ovoid vases, decorated with the impression of brown leaves against a mottled green/brown ground, 7¼" high.
1379. A pair of Doulton Lambeth Silicon ware circular bowls, each with applied flower and leaf motifs against a buff ground, 2¼" high, 3½" diameter.
1380. A Royal Doulton stoneware circular vase, with rudimentary loop handles, decorated with vertical gilt scrolling bands with flower head detail, against a dark grey ground, 6½" high.
1381. A Royal Doulton flagon, by Lilly Partington, with a buff neck and loop handle, the ovoid body decorated with stylized flower buds against a dark blue streaky ground, 7¼" high.
1382. A Doulton Lambeth Stoneware jug, of ovoid form, the blue ground neck with applied mask spout and loop handle, the body incised overall with gilt concentric circles and applied flowers and foliate lower border, 7" high.
1383. A pair of Doulton Slaters Patent vases, each with elongated necks with everted rim and ovoid body, decorated with applied blossom sprays against a textured brown ground, 10¼" high.
1385. A Kevin Francis figure of Clarice Cliff, designed by John Michael for Peggy Davies, seated on a tea cup by a plate, limited edition no 337/900, 9¼" high (with certificate of authenticity).
1386. A Peggy Davies 'Pop Legend Character jug' by Ray Noble, of John Lennon, the handle modeled as a French horn Limited edition no. 25/200. 6¼" high (with certificate of authenticity).
1387. A Kevin Francis figure of Susie Cooper, designer by John Michael for Peggy Davies, the figure seated by a leaping deer against a plate of her design, limited edition no. 659/1000, 10" high (with certificate of authenticity).
1388. A Kevin Francis figure 'La Femme Fatal', modelled by Andy Moss for Peggy Davies, the scantily dressed figure seated on a sofa, holding a feather fan, limited edition no. 280/750, 8¼" high (with certificate of authenticity).
1389. A Kevin Francis figure of The Young Susie Cooper, designed by Caroline Dodd for Peggy Davies, the figure seated on a tea pot holding a cup and saucer, limited edition no. 93/900. 9" high (with certificate of authenticity).
1390. A Rialto-Ware Art Pottery jardiniere, ovoid with an everted rim, painted and gilt butterflies amongst clouds against a stippled blue ground, 7¼" high, 8½" diameter.
1391. A Royal Doulton figure "Daisy" no. HN3804, another figure "Eliza" no HN3800, 9½" and 10" high respectively.
1392. A pair of Royal Doulton Romany Tobies by David Biggs, no D7139 and D7140, Limited edition no 56/2500. 6¼" high (with certificate of authenticity).



Lot No. 1395

1393. A Royal Doulton character jug 'Charlie Chaplin', modelled by Robert Tabbenor, Limited Edition no 434/3500, 4 $\frac{1}{4}$ " high (with certificate of authenticity).
1394. A Royal Doulton figure "The Mask Seller", designed by L. Harradine, HN2103, 8 $\frac{1}{4}$ " high.
1395. A Royal Doulton Flambe Aladdin's Genie character jug designed by David B Biggs, Limited edition no 768/1500, 8" high, with certificate no. 768
1396. A Royal Doulton Character jug, 'Vice Admiral Lord Nelson', modelled by Stanley James Taylor, no. D6932, 6 $\frac{1}{2}$ " high (with certificate of authenticity).
1397. A Royal Doulton character jug, William Shakespeare, modelled by Robert Tabbenot, no D7136. 7 $\frac{1}{2}$ " high, (with certificate of authenticity).
1398. A Royal Doulton Character jug, Lord Kitchener, modelled by David Biggs, no. D7148, limited edition 1136/1500, 7 $\frac{1}{2}$ " high.
1399. A pair of Royal Doulton Character jugs, Stan Laurel and Oliver Hardy, modelled by William K Harpo, no. D7009, limited edition no. 1310/3500. 4 $\frac{1}{4}$ " high (with certificate of authenticity).
1400. A Royal Walt Disney Showcase Collection: Snow White SW9; Happy SW12; Grumpy SW11; Dopey by candlelight SW17; Bashful's melody SW18; Sneezy SW14; Doc SW10; Sleepy SW15; Bashful SW16; Snow White 6" high.
1401. A Royal Doulton figure group "Bon Appetite", HN2444, 7" high.
1402. A Royal Doulton flambe figure "Eastern Grace", designed by P Parsons, HN3683, limited edition 1806/2500, 13" high, with certificate no. 1086
1403. A Royal Doulton figure 'The Potter', designed by C.J Noke, HN1493, 7 $\frac{1}{2}$ " high.
1404. A Royal Doulton figure 'Blue Beard' designed by L Harradine, HN2105, 12" high.
1405. A Royal Doulton Tweedledum and Tweedledee cruet set, D7122, 3 $\frac{1}{2}$ " high
1406. A Royal Doulton figure 'The Mask' designed by Leslie Harradine, modelled by William K Harper, HN4141, limited edition 3/1500, 10" high (with certificate of authenticity).
1407. A Royal Doulton figure "The Genie", by Robert Tabbenor HN3989, 10" high.
1408. A Royal Doulton Flambe character jug "Confucius", by Robert Tabbenor D7003, limited edition 1121/1750, 8" high.
1409. A Royal Doulton Art Deco coffee service, printed with autumn leaves against a cream ground, gilt line rims, pattern no. V1815, comprising coffee pot, six demitasse and saucers, sugar and cream.
1410. A Royal Doulton Famous Artists Character jug 'Monet', modelled by David Biggs, D7150, 7" high.
1411. A Wilton Ware vase, of hexagonal tapering form, painted and gilt with two Japanese carp, gilt weeds and smaller fish, against a mother-of-pearl lustre ground, 4 $\frac{1}{4}$ " high.
1412. A Wilton Ware spherical vase, with a narrow everted rim, gilt with Chinese vignettes and floral sprays, 4 $\frac{1}{4}$ " high.
1413. A Harley Jones Art Pottery two-handled pedestal dish, of shaped oval form, enamelled and gilt with Chinese figures on a landscape, 12 $\frac{1}{4}$ " wide.
1414. A Royal Staffordshire supper plate, painted with spring flowers from a design by Clarice Cliff, 10 $\frac{1}{2}$ " wide
1415. A Doulton Lambeth stoneware small jug, with applied florets within dotted circles against a diamond incised ground, glazed in blue, brown and white, 5" high.
1416. A Clarice Cliff Bizarre model of a country cottage, with red tiled roof, yellow walls, blue doors and windows, painted with flowers. 2.75" high.
1417. A Newport Pottery Clarice Cliff basket and cover, with a pale yellow weave body, the cover with overhead handle, moulded and painted with flowers. 4.5" high.
1418. A Sarreguemines majolica basket, oval, having a diced brown glazed overhead handle, the body moulded with lilac foxgloves and green foliage, the interior yellow, impressed factory marks, 11 $\frac{1}{2}$ " wide
1419. A pair of 19thC Queensware type candlesticks, the pale blue ground with applied cream acanthus borders and pendant blossom to the circular stems, 9" high
1420. A Samson porcelain inkwell, circular painted in coloured enamels with a floral and sprig border over diaper ground, the small cover with gilt finial within a yellow sprig border, 2" high
1421. A pair French Faience vases, and a ginger jar.
1422. A Continental porcelain table centrepiece, modelled as a Countrywoman, supporting a pierced basket on her head, flanked by two tree stumps, on rocaille base, 9 $\frac{1}{2}$ " high.
1423. An Austrian Amphora porcelain figural vase, of a young female goat herder with two lively goats, on a moulded base, glazed in pastel hues, models no 4855, 13 $\frac{1}{2}$ " high



Lot No. 1436

1424. A 19thC Continental porcelain two-handled pot pourri vase and cover, of ogee shape, on a knopped pierced pedestal, printed with amorini panels and encrusted with flowers, the pierced cover with flower encrusted finial, 9½" high.
1425. An early 19thC Cyples black basalt small teapot with applied foliate decoration, 3½" (minor chips to cover and spout)
1426. An 18thC Whieldon bachelor's teapot, of globular form in typical green and ochre glazes, with applied floral and foliate detail, the cover with floral finial, 4½" high
1427. A bronzed terracotta bust of Milton, marked verso 'R. U. 1871, Deponirt'.
1428. A Royal Doulton figure of Vice-Admiral Lord Nelson, modelled by Alan Maslankowski, no. 159/950, standing in typical pose on a circular plinth, with bucket and coiled ropes, the sides printed and painted with various flags and shipping vignettes. 13" high, with certificate and original box.
1429. A Royal Doulton character jug, "Dick Turpin" D6528, 6¼" high
1430. A Royal Doulton character jug, "North American Indian" D6611, 7½" high
1431. A Royal Doulton character jug, "The Falconer" D6533, 7½" high
1432. A Royal Doulton character jug, "Old Charley" D5420, 6" high
1433. Three Royal Doulton character jugs, "Sairey Gamp" D5528, 3" high; "Rip Van Winkle" D6163, 4" high; "The Poacher" D6464, 4" high
1434. A Royal Doulton Toby jug, "Falstaff" D6063, 5¼" high; a miniature character jug "John Bareycorn", 2½" high; a miniature "Sairey Gamp" jug and two others (5)
1435. A Beswick figure of a Leghorn cockerel, model no 1892, by Arthur Gredington, 10" high, issued 1963-1983
1436. A Beswick figure of a Sussex Cockerel, model no 1899, by Arthur Gredington, 7" high, issued 1963-1971
1437. A pair of 19thC Staffordshire pottery spaniels, each with separate front leg, with copper lustre splashes, 9½" high, (cracked)
1438. A continental Chelsea style cache pot, baluster with lilac shell moulded rim and handles, painted with floral sprays on a raised foot rim, 6¼" diameter
1439. An early 19thC pearl ware plate, with a moulded scalloped rim, painted with berries within radiating scrolls and pendant foliage, enriched in gilt, 8¼" diameter
1440. A red ware baluster vase, with a moulded everted rim and two scrolling foliate handles, enamelled in colours with stylized flowers and butterflies, 9" high (restored); a Leeds Pottery cream ware pierced oval basket, 10" wide (restored with rivets) (2)
1441. A parian match striker, modelled as two amorous owls perched on a branch, the base inscribed Matchmaking, 7" high, another example, (2)
1442. An 18thC Delft circular footed blue salt with a simple leaf design, 3" diameter; an early 20thC Delft bough pot, the serpentine moulded body, painted with a landscape and floral panels, raised on three toupie feet, 3½" high; a German miniature cup and saucer, possibly Meissen, painted with blue flowers and foliage, bears blue crossed swords mark; a small Meissen pin tray, of ogee form, painted with flowers within a gilt line rim, blue crossed swords and numbered 223 (5)
1443. A Staffordshire earthenware dinner service 'Marcia' pattern, each piece printed with a swag and pendant border pattern in green, comprising 5 graduated oval meat plates, 35 plates in three sizes, 12 soup plates, 2 tureens and covers, 2 sauce tureens, covers and stands and a ladle, early 20thC
1444. A 19thC Royal Worcester dessert service, each piece painted with differing sprays of wild flowers and ferns within a gilt egg and dark border and bead rim, comprising a pedestal comport, two footed comports and twelve dessert plates, impressed Worcester mark with printed crown
1445. Five Copeland Spode "Devonia" pattern plates, centrally decorated with a vase of flowers on a terrace, within a shell and scroll cartouche, against a green sprig ground within repeat scroll borders, 8½" diameter; three pearl ware tea bowls and saucers, each piece printed in brown with repeat pattern of urns, flowers and foliage, (some damage)
1446. An English porcelain part dinner and tea service, probably Mintons, decorated in the Chinese Tree Pattern no. 2067, approximately 45 pieces
1447. A Copeland Spode pottery circular bowl, decorated with floral reserves against a lace ground, within egg and dart borders, 10½" diameter
1448. A Wedgwood pottery circular bowl, decorated with flowers, birds, and butterflies against a trellis ground, 8½" diameter; two Keeling pottery nursery cups and saucers, printed with the Corinthian Arch pattern in turquoise
1449. An early 19thC ironstone large mug, in the Masons style, with a serpent handle, the moulded circular body painted and gilt in the Japan palette with chinoiserie panels and foliage, 5½" high, (repaired with rivets)

1450. A **Samson porcelain vase**, of circular tapering form, painted with a stylized bird, and insects in a landscape, *6 3/4" high*; a Samson porcelain caddy, of rounded lozenge form, enamelled in colours with flower sprigs and gold bead detail within quatrefoil panels, deep blue borders gilt with heat motifs, *5" high* (lacking cover)
1451. A **19thC Staffordshire pottery spill vase figure group**, modelled as two children, each with underglaze blue jackets with a panniered pony, on moulded base, *10" high*
1452. An **early 19thC pearl ware figure** of a young woman holding a violin before a bocage, the oval base moulded with two lambs, *6" high*, (some losses to bocage)
1453. A **Delft blue and white panelled vase**, painted with quivers of flowers; a Delft candlestick, painted with floral sprays, birds and insects, *8 1/2" high*; a pair of Delft panelled baluster urns and covers, painted with lakeland landscapes, the covers with bird finials, *7 1/2" high* (4)
1454. A **pair of modern Continental porcelain figures** of a gallant and female companion, in colourful 18thC dress, raised on deep scrolling plinths enriched with gilt, *11" high*
1455. A **pair of 19thC porcelain pedestal comports**, probably Ridgway, each centrally painted with a lakeland landscape with figures, within green borders with scroll detail and enriched with gilt, on pierced and knopped stems and conforming foot, pattern no 727, *10" diameter*
1456. **Royal Crown Derby: a Vine pattern plate**, painted with flowers against a white ground; another similarly painted within pink borders; another within peach borders; two tea plates and two saucers, within claret borders, all with vine moulded and gilt borders; together with an Abbeydale plate decorated with the Chrysanthemum pattern in the Japan palette and an Abbeydale 'Imperial' pattern plate (9)
1457. A **19thC Thuringia figure group by Richard Eckert & Co**, modelled as an 18thC noblewoman crossing a stream supported by a gallant, accompanied by two amorini, she wearing an elaborate green flower sprigged dress, he in a pale blue frock coat and puce breeches, linked by a floral swag, the oval base with dentil border, underglaze blue factory marks, *8" high*
1458. A **pair of late 19thC German porcelain figures of a young man and female companion**, both in colourful 18thC costume, seated on an oval base, with chickens, she with a basket of corn, he with a basket of flowers, *4 1/2" high*; another pair, similar, standing on circular bases, he with geese, she with chickens, *4 3/4" high* blue factory marks and stamped Dresden (4)
1459. A **pair of late 19thC German porcelain figures of seated infants**, both wearing floppy brimmed hats and little else, one with a basket of fruit and one with a mandolin, on square bases underglaze blue factory marks, *3" high*
1460. A **reproduction Hoscht porcelain figure of a young boy** wearing a yellow polka dot coat and punk breeches, eating cherries from his hat, on a moulded base, *5 1/2" high*; a German porcelain figure of a young boy in 18thC costume holding a bunch of grapes and a spigot, on a circular base, *5" high*; a German porcelain figure of an amorini, holding a bunch of ivy clad sticks on his shouldered, on a rococo scroll base, *5" high* (3)
1461. A **Continental porcelain figure group of a couple**, in colourful 18thC costume, seated on a couch, he with a book, she with flowers, *5" high*; a porcelain figure of a young woman, in colourful 18thC dress, on a pierced raised plinth with gilt moulded rococo scrolls, *7" high*
1462. A **19thC porcelain miniature mug**, painted with a river landscape between gilt lines, *1 1/2" high*; a continental porcelain figure of a young girl, seated on a stool with a pot between her knees, *4" high* (2)
1463. A **19thC majolica nautical cruet set**, having a lighthouse pepperette flanked by a boat shaped salt and coracle mustard with cover, each fitted in a rock moulded with ring handle, *5" high* (repaired handle)
1464. A **pair of Royal Crown Derby 'Mikado' pattern tureens and covers**, with moulded and gilt scroll handles and raised on four feet, printed in blue, together with three matching oval dishes
1465. An **early 19thC pearl ware circular bowl**, externally printed in blue with naive figural landscapes with resting cattle and farmhouse, internally with a vignette and floral border, *6 1/4" diameter*
1466. A **Minton pottery lazy Susan**, the platform with a pie crust moulded edge, decorated in an underglaze flo-blue border if herons in flight amidst clouds, on a conforming domed foot, date code for 1878, *19" diameter*
1467. A **Minton's pottery large jardiniere**, of circular form with a waved rim, the deep blue ground with applied silver and gilt apple blossom, the neck with a broad gilt tied ribbon, date code for 1880, *12 1/2" high*, *12" diameter*, (cracked)
1468. An **extensive modern Coalport blue china 'Hong Kong' pattern dinner service**, printed, painted and gilt in the Japan palette with peonies, berries, leaves and birds, comprising 24 plates, 2 covered tureens, gravy boat and stand, 8 tea cups and saucers, 8 coffee cups, 8 soup bowls and stands
1469. A **Coalport lidded ovoid pedestal urn and cover**, another smaller example, three various vases and a lidded caddy, to match previous lot
1470. A **pair of Continental bisque piano babes**, each modelled as a baby in a white romper suit with blue trimming, *7 1/2" wide*
1471. A **pair of 19thC Staffordshire pottery spaniels**, the coats with iron red splashes gilt collar and chain, *9" high*, (one with damaged base)

1472. A 19thC Staffordshire white glazed seated pottery half dog, 8 1/2" together with a later beige toned Staffordshire seated half dog 6 1/2". (2)
1473. A 1950's Midwinter Mexicana coffee set designed by Jessie Tate, 20 pieces.
1474. A Beswick pottery wall face mask, Lady with a beret in profile - model no. 277, issued between 1934 and 1954, 4 1/2" high
1475. A Royal Doulton character jug 'Sam Johnson', D6296, 3 1/4" high
1476. A Royal Doulton figure 'St George', HN2051, designed by P. Davies, 8" high
1477. Three Limoges porcelain dessert plates, each decorated to the centre with playful putti, within gilt floral wells, the shell moulded borders gilt, against a blue ground; a further three examples with yellow ground borders, Lanternier factory marks, retailed by R B Gray & Co, 8 1/4" diameter
1478. A Heathcote bone china 'The Lea' pattern tea service, of Art Deco design, decorated with primroses in a meadow, comprising tea plates, cups and saucers. two large plates, cream and sugar (some minor damage)
1479. A Beswick figure of a Welsh Cob (rearing), brown floss, model no 1014, designed by Arthur Gredington, 10 1/2" high
1480. A Clarice Cliff Blue Autumn Fantasque Bizarre vase, shape 342, painted in colours between orange and green bands, 8" high
1481. A Clarice Cliff blue chintz Bizarre vase, shape no 497, painted internally and externally within a blue line rim, 4 1/2" high, (lacking interior fitting and some paint loss)
1482. A Clarice Cliff crocus tea for two, painted in colours between green, yellow and brown bands, comprising tea pot, cream jug, sugar bowl, two cups, saucers and plates
1483. A 19thC Staffordshire spaniel, with gilt collar and chain, the coat with gilt splashes, 12 1/2" high
1484. A late 19thC German porcelain posy vase, modelled as a young girl with a wheelbarrow, painted on a moulded base, 4 1/2" high; another, of a young boy with a shell, 4" high (2)
1485. A Grainger's Worcester porcelain two-handled vase and cover by James Stinton, of ovoid form, painted with mallard in flight over marshes, signed Jas. Stinton, the cover, handles, neck and foot, blush ivory mould and gilt with acanthus detail, model G955, date code for 1902, 14" high
1486. A Beswick Hereford Bull, 'Champion of Champions', model no 1363, brown and white gloss, 4 1/2" high
1487. A Beswick Highland Calf, model no. 18270, tan and brown gloss, 3" high
1488. A Beswick Hackney horse, model no 1361, designed by Orwell, brown gloss, 7 1/4" high
1489. A Beswick Green Woodpecker, model 121B, design by Gredington, gloss, 1983-1988, 9" high
1490. A Royal Doulton Memories Kingsware water jug, moulded in relief with Dickens characters, 4 1/4" high
1491. A Graingers Worcester Parian two-handled amphora shaped vase, decorated with classical bands of lotus and palmette, bay leaf and running scroll against a black ground, divided by gilt lines, 10" high, Printed factory mark 1870-1889
1492. A Clarice Cliff Crocus Bizarre Greek jug, shape 563, painted in colours between green lines and yellow and brown bands, moulded and printed factory marks, 9" high
1493. A Doulton stoneware commemorative jug, William Ewart Gladstone, the jug printed with a portrait and quotations below the title England's Great Commoner, 7 1/2" high
1494. A rare and interesting pair of terracotta bust finials of Edward VII and Queen Alexandra, 2" high
1495. A Royal Doulton biscuit figure, the Seafarer, HN2455, 9" high
1496. A Royal Doulton porcelain figure, the Boatman, HN2417, 7" high
1497. A late 19thC warming plate, printed and painted with peonies and blossom within a diaper border, fitted to a tin two-handled casing with water funnel, 9 1/2" diameter
1498. A Victorian porcelain part dessert service, printed with differing birds amongst branches, within turquoise borders and gilt moulded lines, comprising tow footed comports and eight plates
1499. A Sarreguemines pottery column, of reeded form, with octagonal base, impressed Sarreguemines 1126, 43" high
1500. A Victorian 19thC Pratt ware paste pot lid, "The Travellers rest", 4 1/2" framed.
1501. A Victorian Pratt ware pot lid "Alas Poor Bruin", 3" diameter, framed
1502. A Victorian Pratt ware pot lid, "Landing The Fare, Pegwell Bay", 4" diameter, framed
1503. A Victorian Pratt ware pot lid, "Pegwell Bay", 4 1/4" diameter, framed
1504. A Victorian Pratt ware pot lid, "Shakespeare's Birthplace, Stratford on Avon", 4" diameter, framed
1505. A Victorian Pratt ware pot lid, "Royal Harbour, Ramsgate", 4 1/4" diameter, framed
1506. A Victorian Pratt ware pot lid, printed with country women and children in a wheat field, 4 1/4" diameter, framed
1507. A Victorian Pratt ware pot lid, printed with travellers in a country landscape, 3 1/4" diameter; another of figures and resting sheep by corn stocks, 3" diameter (damaged), both framed

1508. A Victorian Pratt ware pot lid, of cockle pickers, 4" diameter, framed
1509. A Victorian Pratt ware pot lid, of figures in a Dutch winter landscape, 3" diameter, framed
1510. A Victorian Pratt ware pot lid, of children by a chicken coop, 4" diameter, framed
1511. A Victorian Pratt ware pot lid, of Little Red Riding Hood and the Wolf, 3" diameter, framed
1512. A Victorian Pratt ware pot lid, of a Turkish beauty at her dressing table, 3" diameter, framed
1513. A Victorian Pratt ware pot lid, of a seated dog waking a sleeping child, 3" diameter, framed
1514. A Victorian Pratt ware pot lid, The Listener, 3½" diameter, framed
1515. Three mid-19thC copper lustre baluster jugs, each enamelled with flower sprigs and leaves, scroll handles, 5½" high by two, of 4" high
1516. An early 20thC continental bisque figure of a young boy in sailor suit, glazed in pale pinks, standing on a naturalistic moulded base, 14½" high
1517. A Beswick horses head looking left through a horseshoe, second version with raised back, 7½" x 6", issued 1938-1968
1518. A Beswick horses head looking left through a horseshoe, second version, with raised back, 7¼" x 6", issued 1938-1968
1519. A Cauldon part dinner service, the borders highly gilt, with Fleur de Lis and stamped scroll rims, Lambrequin borders, comprising large oval meat plate, two oval lidded tureens and six dinner plates
1520. A 19thC German porcelain figure of young girl, dressed in flowered flowing robes, holding an urn and stopper, on Rococo gilt scrolled base, 8" high
1521. A Booth's pottery toilet pail, printed with bunches of fruit and raffia, with raffia swing handle, 10" high
1522. A pair of Royal Worcester "Cairo water carriers" figures, designed by James Hadley, the figures of a male and female dressed in full length gilt and green painted robes, model no. 949, and year cipher for 1923, 19" and 21" high
1523. A Mason's ironstone bowl, 11" diameter; and soap stand, decorated in an Imari willow pattern
1524. A 19thC Continental porcelain encrrier, decorated with gilt highlighted rococo cartouches and figures of cherubs in landscape, gilt crowned wheel mark to base (AF)
1525. A set of four Victorian porcelain dessert plates, painted with butterflies; and two others (6)
1526. A Staffordshire pottery model of Hever Castle, and a porcelain pug dog, and an oval porcelain trinket box (3)
1527. A pair of Coalport porcelain marriage tankards, hand painted with floral sprays and named within the cartouches, John Houghton and Mary-Ann Yates, 1861
1528. A Meissen porcelain sleeve cup and saucer, decorated in the Imari palette, crossed sword mark in under glaze blue
1529. A German porcelain figure of a young dandy (AF), 9" high
1530. A Hochst bottle vase, embellished with bird of prey and exotic bird in relief, 8" high
1531. Minton tiles, depicting Knights of the Round table, designed by Moyr Smith (various damages)
1532. A Victorian mandarin willow pattern tea service
1533. A Coalport figure entitled 'Happy Birthday'.
1534. A Coalport figure entitled 'With Thanks'.
1535. A Royal Doulton Figure 'The Barmaid' D7180.

10AM WEDNESDAY 15TH

GUNS & TAXIDERMY

- 2001. A BSA 12-bore double-barreled side-by-side shotgun. Ser. # 13358 - this gun needs repair to the clip under the barrels - RFD's only
- 2002. A BSA 12 bore double barrelled side by side shotgun, Ser. No. 4797 - Shotgun licence required.
- 2003. A Simson Suhl 12 bore double barrelled over/under shotgun, Ser. No. 194114 - Shotgun licence required
- 2004. A Baikal 12 bore double barrelled over/under shotgun. Ser. No. 00756 - Shotgun licence required
- 2005. A BRNO 22rim rifle, Ser. No. 60151, c/w sound moderator. Firearm licence required.
- 2006. A Franchi 12 bore single barrelled multi-shot shotgun, Ser. No. 32980. Firearm licence required.
- 2007. 250 12 bore cartridges; 8 boxes Eley Grand Prix, 2 boxes Kent. Shotgun licence required.
- 2008. c.90 assorted 12 bore cartridges. Shotgun licence required.
- 2009. 9 x 50 Winchester .22 long rifle percussion cartridges; 1 x 50 fiocchi .22 long rifle percussion cartridges. Firearm licence required.
- 2010. A Game bag, cartridge bag, 25 round 12 bore cartridge belt and a machete sheath.
- 2011. A W.J Jeffery & Co 12 bore double-barrelled side by side shotgun, Ser No 13634 - Shotgun licence required
- 2012. An E. Page fontenay 16 bore double barrelled side by side shotgun, Ser No 130224 - Shotgun licence required
- 2013. A Krupt 16 bore double barrelled side by side shotgun, hammer action, Ser No 30039 - *Lot now withdrawn.*
- 2014. A Robust 12 bore double barrelled side by side shotgun, Ser No 188936 - Shotgun licence required
- 2015. A Baikal 12 bore double barrelled side by side shotgun, Ser No C00023 - Shotgun licence required
- 2016. A P Knight of Nottingham 12 bore double barrelled side by side shotgun, hammer action, Ser No 9765 - *Lot now withdrawn.*
- 2017. A Belgian 16 bore double barrelled side by side shotgun, Ser No 22248 - Shotgun licence required
- 2018. An English 12 bore double barrelled side by side shotgun, hammer action, Ser No 5879 - Shotgun licence required
- 2019. An English 12 bore double barrelled side by side shotgun, hammer action, Ser No 5879 - Shotgun licence required
- 2020. A Clarke of Leicester 16 bore double barrelled side by side shotgun, Ser No 3624 - Shotgun licence required



Lot No. 2025



Lot No. 2027

- 2021. A Ward & Son of Birmingham 12 bore double barrelled side by side shotgun, hammer action, Ser No 4526 - Shotgun licence required
- 2022. An Antique 9mm garden gun (AF), RFD's only
- 2023. An Enfield WWII .38 cal service revolver (AF), holster and water bottle - RFD's only
- 2024. A 19thC Colt revolver, in later case
- 2025. A 19thC Colt revolver, in a later writing case
- 2026. A sidelock percussion pistol with walnut stock, 12"
- 2027. A boxlock percussion pocket pistol with detachable octagonal barrel, 8"
- 2028. A boxlock percussion pocket pistol, 7 1/2"
- 2029. A Tinder pistol with taperstick holder, 6"
- 2030. A Dunhill tinder pistol lighter, boxed
- 2031. Three brass and copper powder flasks
- 2032. A brass cartridge filler
- 2033. A WWII German bayonet with sheath
- 2034. A 19thC brass handled bayonet with sheath
- 2035. A bayonet with sheath and belt holster
- 2036. Nine various sheath knives
- 2037. A cartridge belt, two gun cleaning rods and a quantity of plaswads
- 2038. A Brady leather gun case
- 2039. A square section brass depth gauge, with knob handle.
- 2040. A Flintlock gun (AF), 37"
- 2040A. A leather saddle.
- 2040B. A leather saddle.
- 2040C. A Persian flintlock pistol embellished with brass and silver piquetwork, 22" long
- 2041. A sidelock percussion black powder gun, 47"
- 2042. A sidelock percussion gun, 58"
- 2043. A cased display of taxidermy partridges.
- 2044. A cased taxidermy water bird.
- 2045. A cased taxidermy gull.
- 2046. A cased Taxidermy starling.



2047. A cased taxidermy gull.
2048. Taxidermy: A glazed case containing assorted water and other birds in a naturalistic landscape
2049. Taxidermy: A glazed case containing an assortment of birds in a naturalistic landscape on branches with ferns, including pheasant, jays, thrush. Case 36" x 40".
- 2049A. Taxidermy: A goose with light brown plumage. 22" tall, on a oblong wooden base.
2050. Taxidermy: A pike, in a glazed case labelled 'Pike, Caught Old Trent, Date 1932, Weight 23lb'.
- 2050A. A cased taxidermy cock pheasant.

ANTIQUES & COLLECTORS ITEMS

2051. A late 19thC travelling vesta case, and a matching inkwell, both covered in dark leather, stamped in gilt 'Light' and 'Ink' respectively, 2" high
- 2051A. A cold painted bronze group of three grouse, stamped DEPOSE 1181, 22 high.
- 2051B. A cold painted bronze figure of fox, 1½" high.
2052. A white metal vesta, cast as an owl, 2" high; another as a pig, 1" high; another as a bird, 2½" high; a brass vesta as a fish, 2¼" high; a gold tie pin. (5)
2053. An Arts and Crafts copper pin wheel, repoussé decorated with fruit and leaves, the opposing side with a flower head, 2¼" diameter
2054. A Waterman self filling fountain pen, in a marbled case, in original box and four other pens
2055. A pair of brass and iron andirons.
2057. A Palekh Russian papier maché oblong box, the cover decorated with a mythical medieval scene, the interior coloured red, modern, 7¼" wide
2058. A rosewood travelling chessboard, hinged to the centre, the interior board with peg holes, 8" x 4"
2059. A black lacquered papier maché desk stand, of oblong form with rounded corners, on four compressed bun feet, decorated with gilt loop and mother of pearl foliate borders, fitted with two cut glass ink wells, flanking a lidded stamp box, 10" wide
2060. A Victorian mahogany travelling medicine chest, with an inset brass carrying handle, over two doors, the interior fitted with an arrangement of fourteen glass bottles with stoppers, a deep fitted drawer with a removable tray, and various accessories; together with hand written prescriptions, bearing the address 7 Portland Place, London and signed D. H Goodsall, dated April 17th 1880 and May 15th 1880, a medical receipt, all together is a plain envelope, the chest 9½" x 8" x 6½"
- 2060A. A pair of black lacquer book ends with chinoiserie decoration
- 2060B. Collectors badges, including Captain Scarlet, Noddy and the Robertson's Golly
2061. An early 19thC figured mahogany tea caddy, oblong with satinwood banding, the cover with a brass bail handle, the interior fitted with two lidded compartments flanking a cut glass bowl, 12" wide
2062. An early 19thC figured mahogany sarcophagus tea caddy, with gadroon moulding, the interior with two lidded compartments on four bun feet, 9" wide
2064. A cast iron 'Jolly Nigger' money bank, painted with a red jacket with white collar and blue bow, 6½" high
2065. A treen wig stand, with a baluster turned stem and on a circular dished base, 9" high
2066. A Victoria Haxon trumpet horn, with winding handle and brass tipped trumpet, with mounting bracelet
2067. A set of Lott's bricks, Box A series B, in original box with design pamphlet (torn), the box 9" square
2068. A 19thC Chinese carved wood openwork cylinder vase.
2069. An early 20thC Peak Frean novelty biscuit tin, modelled as a green lizard or crocodile skin, attached ease with gilt scroll corners and clasp, 5" x 9"
2070. A 19thC flamed mahogany travelling decanter box, oblong, inlaid with brass bands, having carrying handles to each side, on bun feet, the interior lined with mashed paper and fitted with six small glass decanters and two stem glasses, with gilt ornament, 9" x 10¼" x 7¼"
2071. A pair of 19thC bronze three-light candelabra, with leaf scroll branches, removable sconces with glass drip trays, the fluted columns with phoenix finial and hung with chain below a leaf calyx, a circular base, raised on three scroll legs with hoof feet divided by pierced shell and floral ornament, 24" high
2072. A pair of porcelain and brass table lamps, the vase shaped bodies enamelled with flower prays against a celadon ground, a cast brass and ring handle to each side, on toupie feet, silk shades. 30.5" high overall.



Lot No. 2075



Lot No. 2081



Lot No. 2098

2073. A 19thC ormolu mounted table lamp, being a Chinese crackle glazed bottle vase, the mounts cast as bamboo, on a gilt metal base case with scrolls on four feet, 18" high
2075. After Limousin. A pair of Art Deco outstretched chromium figures of young women holding floral swags, signed Limousin, on marble bases, 16½" high
- 2075A. A middle eastern glass pipe in fitted case.
2076. An Edwardian mahogany serving tray, of shaped rectangular form, having shell inlaid centre and brass handles.
2077. A Ronson Art Deco Touch-Tip table cigarette light and cigarette dispenser, black enamelled and chrome, on an oblong base with stepped feet, 8" long; a Conty table cigarette lighter, chrome with black Morocco leather panels, 3¼" high; a Ronson classic silver plated lighter; a Pifio small handling lamp, the shade modelled as an owl in frosted glass, 5¼" high (4)
2078. A large tan leather Gladstone bag with brass mounts, 21" wide
2079. After P.J. Mene. A gilt brass figural group of a greyhound and a spaniel on oval base and ceramic plinth. 7" high.
2080. An 18thC brass mortar and ladle.
2081. An 18thC ormolu planter, of boat shape, east in high relief with floral sprays, foliage and scrolls, mounted with a putti to each side. foliate scroll handles, on four scroll feet, tin liner, 19.25" wide.
2082. A mahogany miniature chest, of square outline, fitted with four drawers, with brass handles, on bun beet, 10¼" x 8½" x 7¼"
2083. A brass ladle with pierced handle, 18" long
2084. A set of 19thC brass fire irons, comprising tongs, shovel and poker
2085. An enamel AA breakdown service sign, 9" x 7"
2086. A BR/LMR railway handlamp (red, white, green), Sherwoods sound Ltd on Burner Assembly; Linn light no 1, British patent no. 566675, cracked glass
2087. A BR (W) railway loco lamp, white, brass oval plate, impressed G. Polkey Ltd, manufacturers Birmingham Br-WR on burner (no wick); Vapourite no 2 British make Sherwoods Birmingham
2088. An SRBR railway handlamp (red, white, green), black, made by Bladon Birmingham, no 3312 on brass plate, Sherwoods sound burner, Vapourlight no 2, stamped BR
2089. A brass and metal Ackroyd and Best safety lamp, Hail Woods approved lamp no 976, type 1b,
2090. A GWR loco pressure gauge, 0-280PSI (red line 200), stamped GWR on case near union fitting, 336T stamped on back
- 2090A. A railway two-way lamp (red and white), BR(M)M, black with a Vaporite patent burner
2091. A brass gauge, the Lightfoot Refrigeration Company Ltd
2092. A chrome gauge, 1-6lbs square inch, United Motors Industries Ltd, London, no. 2780964
2093. A Rotothem brass round temperature gauge, with chrome bezel, G810-138
2094. A violin by Francois Barzoni, with a two-part 14" back (below button), bearing label François Barzoni Secite-Ano 1897; together with two bows, in fitted case
2095. A set of three graduated tan, leather suitcases, with brass fittings, together with their accompanying canvas bags
2096. A late 19thC patinated Spelter figure, of a young boy, clutching two young birds against an oak tree stump, on moulded base, 16" high
2097. A black veined marble desk stand, mounted with a brass figure of a saddled horse, flanked by two metal inkwells, 12" wide; a tortoiseshell and gilt metal bulle cigarette box, of oblong form, stamped Asprey, London, 6¼" x 4"
2098. A fine premier-partie boule box by Asprey, of rectangular form, with hinged cover, the base signed in Asprey, London. 4" x 6".
2099. A French railway man's peaked hat, red and navy felt, the interior stamped S. C. P. Bernay 58
2100. A pair of painted wooden candle table lamps, with everted leaf detail, on panelled steps, on hexagonal panelled foot, 22" high
2101. A early 20thC blue pottery table lamp, modelled as an octagonal tapering vase, with serpent handles, moulded in relief with chinoiserie detail, 21" high
2102. A table lamp modelled as a jay perched on tree stump, probably Meisen, 28" high overall



2103. A 19thC turned walnut cat stand
2104. A cream leather fitted vanity case, with outer canvas cover
2105. An early 20thC tan pigskin fitted travelling case, with gilt metal clasps, inscribed with initials to the cover, the interior fitted with a folding tray with a good arrangement of silver and baisse taille enamel accessories, dated London 1933, comprising hand mirror, two hair brushes, two clothes brushes, a comb and eight jars and boxes; a further circular jar, fitted to the lower area, 22" x 15"; together with a canvas cover
2106. An early 20thC tan pigskin travelling case, with gilt metal clasps, the interior fitted with a folding tray containing an assortment of silver and blue baisse taille accessories, comprising a hand mirror, hair brush, clothes brush, tray and eight glass jars and boxes, various hallmarks, c.1935, the interior of the case further fitted with a small silver and baisse taille tray, and a glass circular jar, engraved with floral baskets and swags, the silver and baisse taille cover mounted with in a marquissette set monogram CF, the case 15" x 21"; together with an outer canvas cover
2107. An oak canteen of a rectangular form, with fluted hinged pilasters, fitted with a comprehensive silver plated Old English table service for twelve place settings
2108. A cameo carved conch shell table lamp, signed B S Michele. 9" high
2109. A 19thC Parlour cloth, decorated overall in a rich pink with roses, blossom sprays and other foliage, with deep fringing, approximately 67" x 77"
2110. A bronze animalier group, of rutting pigs, on oval stepped base; 4½" wide.
2111. A Perken & Sons Optimus brass and metal magic lantern, 17" long, in a wooden case; together with a quantity of slides, Japan and the Far East
2112. A wooden casket worked as a book, the front cover intaglio carved with foliate scrolls around the initials A and R, the satin padded interior inscribed with best wishes, metal clasp to the side, 12" x 9"
2113. A novelty brass fireside companion, modelled as a lucky imp seated on a toadstool, fitted with a shovel, brush and poker, 12" high
2114. A 19thC figured mahogany workbox of rectangular form, with brass plaque to the cover, having a interior tray, previously fitted, 11" wide
2115. A 19thC mahogany workbox, the cover inlaid with a mother of pearl disc inscribed R. Ketch, the interior with a lift out tray, previously fitted, 11" wide
2116. A 19thC mahogany sarcophagus tea caddy, fitted with two ring candles, the interior with two lidded compartments flanking a bowl aperture, on bun feet, 12" wide
2117. A 19thC brass trivet, with a circular pierced top, on baluster turned stem and three down-swept legs, 11" diameter
2118. A brass 6-light electrolier cast with floral swags, enclosing a frosted glass shade with cut starbursts, 28" high, 14" diameter.
2119. A Victorian copper jelly mould, 9" diameter
2120. After the Antique. A 19thC French bronze figure group of a naked goddess draping her robe over a big cat, on stepped plinth, 6" x 3" base, 6" high
2121. A Regency bronze two branch candelabrum, each sconce having detachable nozzles, palm leaf decoration supporting cut crystal lustres, acanthus stem, turned socle on square plinth with ball feet, 11" high
2122. A pair of Regency bronze candlesticks, with detachable nozzles, stylized leaf drops with cut crystal lustres, tulip stems and stylized foliage, square bases, 9" high
2123. A pair of George II style brass taper sticks, with petal bases; and three ivory napkin rings
2124. An eastern bronze figure of a female standing on an open work bell frame, 11½" high
2125. A nickel plated car mascot in the form a mounted jockey, 4" high, plus wooden plinth
2126. An Ogden's New century Photo Album containing approximately 200 mainly Guinea Gold cigarette cards, including Royalty, Politician and notable figures, shipping; together with six Wills cigarette card albums containing sets and part sets of butterflies dogs, wild animals, foreign birds, game birds, first aid, Riders of the world, Dickens, historic events, silks, flowers, etc
2127. A Northern Echo Railway Centenary Supplement, 1825/1925, with colour printed paper wrapper
2128. Bruce Bairnfather: Bystander fragments from France, vols 3 and 4, c.1916/18

2129. **A tin deed box** containing a quantity of souvenir booklets of Montreal, Quebec, Grand Trunk Rail Road, Saratoga and UK Towns
2130. **Wheatley (Dennis) - Evil in a mask**, 1st edition Hutchinson 1969, signed by the author with dedication on title page, dust wrappers
- 2130A. **The comprehensive gazetteer of England and Wales**, six vols
2131. **Thompson (Lient- Col RR) - The Fifty-second (Lowland) division**, maps and plans by Capt. J B Ramsey, Maclehose, Jackson 1923, contemp. cl bdz (faded and stained).
- 2131A. **White (William)**. History Gathered Here and Directory of Lincolnshire, 1842, calf, first cover partially detached.
Provenance: Ex-libris Fulbeck Hall.
2132. **Pugh (P.D Gordon) - Staffordshire Portrait Figures and Allied Subjects of the Victorian Era**, 1981, dust wrapper; **Oliver (Anthony) - Staffordshire Pottery - The Tribal Art of England**, Heinemann 1981, signed by the author on the title page; **The Victorian Staffordshire Figure, a Guide for Collectors** 1971 (3)
- 2132A. **Various books**, including Thackeray, London Memories, The Treasury of Knowledge and British Birds and their Haunts
2133. **A quantity of Antique Reference books**, Regimental titles, Gazetteers, Topographical Titles
2134. **Fishing: Pritt (T. E) - The Book of the Grayling**, Leeds 1888; **Shaw (Fred G) - The Science of Dry Fly Fishing and Salmon Fly Casting**, London 1907 and related titles, all in poor condition (9)
2135. **Fur and Feather Series** edited by Alfred E T Watson, 5 vols 1895/6/8; **Hastings (MacDonald) Shooting - Why We Miss**, 1976, dust wrapper (torn) (6)
- 2135A. **Potter (Beatrix) - The tale of Samuel Whiskers or the Roly-Poly Pudding**, dated 1908, contemp cl. bdz, pict. label (some with scribbles on and end papers)
2136. **Auchebon (John James) The Birds of America**, two vols, Hermtape 1966, numerous col plates, original cl bds.
2137. **Roscoe (Thomas) L. Knight. The Works of Henry Fielding**, illustrated Cruikshank 1859, half calf, gt spine; **Pouchet (F. A), The Universe**, translated from the French, L:London 1870, half morocco, gt decor; 17 further titles
2138. **Surtees (Robert Smith) Works**, 1920's, uniformly bound in half morocco. gt decor and numerous coloured illustrations by Armour and others, 12 vols
2139. **Waverley Novels** - various titles, 1860's, uniformly bound, half calf. movable boards, 12 vols
2140. **Nine leather bound volumes**, various titles
2141. **Rupert Annuals**, 1968 - 1978 and 1981, 1972, 1973 x 2, all price unclipped but one (14)
2142. **Shakespeare (William) The Works**, Temple Edition, n.d. red morocco, 37 vols; **Waverley Novels**, 1834, 14 vols
2143. **Spare lot.**
2144. **C & J Greenwood**. A wall hanging map of the county Northampton, form the survey of 1825/1826
2145. **A small collection of Bosson's wall masks**
2146. **A 20thC violin**, 14", cased with two bows (no labels)
2147. **"The Maidstone" violin**, 14", cased with bow
2148. **A 19thC German "Anglo-American" guitar - Zither**, in a mahogany case
2149. **A large early 20thC Bavarian terracotta garden gnome**, standing holding a pair of rustic planters (break to leg)
2150. **A low pressure steam engine**, scratch built by Charles Caunt (Ruston & Hornsby), 16" x 17" base

PICTURES

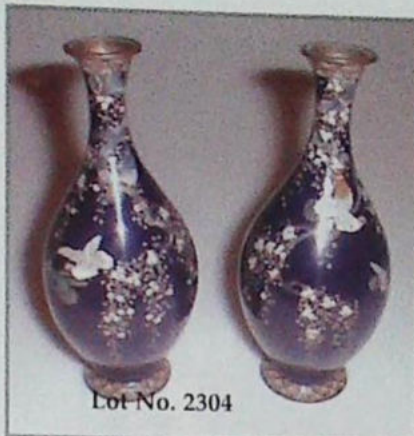
2151. **E. Nevil**. Robins Hood Bay, Whitby, watercolour, signed and titled lower corners, artists labels verso, 10 1/4" x 7 1/4"
2152. **Late 19th / early 20thC Japanese School**. A set of allegorical watercolour drawings of fishermen and crustacea, on silk, 6 1/2" x 4"; after Carle Vernet, a pair of facsimile colour prints
2153. **John Henry Henshall RWS**. Young girl seated by a cradle, watercolour, signed l.l, 7" x 10 1/4"
2154. **Colin Carr**. Heading home to Humberstone - winter landscape with figure, watercolour / ink drawing, signed l.r, 15 1/2" x 19 1/2"
2155. **Cyril Gay**, Coastal village scenes, watercolours, a pair, signed, 10 1/4" x 8 1/4"
2156. **R. A Gill**. Paul's Quay, Kent, watercolour / heightened white, signed and dated 1884 l.r, artists label verso, 17 1/2" x 26"
2157. **Rose Barton RWS (1856-1929)**. Figures on the Thames Embankment, watercolour, signed and indistinctly dated l.l, 9 1/4" x 13 1/4"
2158. **Richard Barrett Davis**. (attrib.) Windsor Castle, sepia wash, pen and ink, signed and dated 1805 l.l, 9 1/4" x 14"
2159. **Powell May**. Children and chickens outside a thatched cottage on a country lane, surrounded by trees, watercolour / heightened white, signed; 11 1/2" x 18 1/2".
2160. **19thC school**. Study of a blind man and his dog, watercolour. 11.5" x 8.5".
2161. **J. C. Reed**. A River landscape with Kingfisher perched on a wooden jetty by a heavily leafed bank and meadow beyond, indistinct watercolour and height and body colour, indistinctly signed. 12.5" x 18.5", artists label verso.



Lot No. 2222



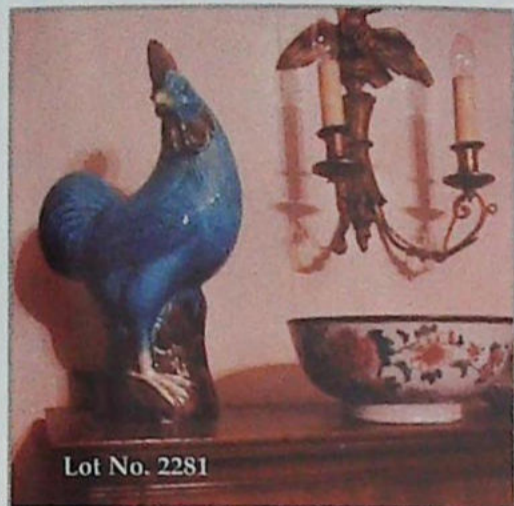
Lot No. 2238



Lot No. 2304



Lot No. 2302



Lot No. 2281



Lot No. 2280



Lot No. 2346



Lot No. 2348



Lot No. 2330



Lot No. 2332



Lot No. 2400



Lot No. 2427



Lot No. 2418

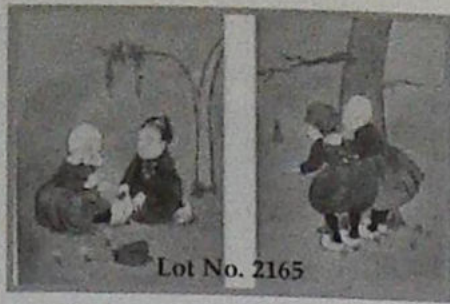


Lot No. 2431



Lot No. 2439





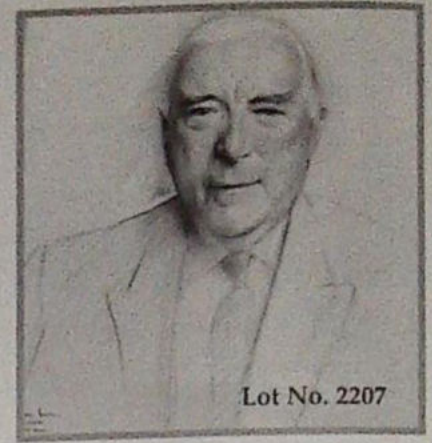
2162. **J. Guitton.** Mediterranean fishing boats in a rocky cove, watercolour, signed. 11" x 15.75".
2163. **J. Guitton.** Mediterranean coastal scene with fisherman and sailing barges, watercolour, signed 10.75" x 15.5".
2164. **School of George Romney.** Study of Lady Hamilton, watercolour. 9.5" x 7".
Provenance: Radburn Hall sale.
2165. **Frederick Brown.** 'He loves me, He loves me not', 'Are you afraid?' A pair of watercolour illustrations for postcards, signed. 9.5" x 6.25" (in one frame).
2166. **William Bartol Thomas (1877-1947).** Boston Stump from the Market Place, watercolour over pencil, signed. 15.75" x 11.75".
2167. **E.M. Percival.** St Mary's Church, Stamford, watercolour. 11.25" x 9.25". *Title and artists signature verso.*
2168. **19thC School.** Royal Hunting party on a cliff top, watercolour, 9" x 13½"
2169. **M. Browning.** Wonder - study of a Daschund, pastel, signed and dated '67 l.l, 11" x 15½"
2170. **Arthur Severn (1842-1931).** Moored sailing dinghy on a calm sea at sunset, watercolour, signed l.l, 14" x 20½"
2171. **M. Browning.** Star, head study of a chestnut with a white flash, pastel, signed and dated '67, l.l
2172. **M. Browning.** Topaz and Silver, head studies of a yellow and black Labrador, pastel, signed and dated '67, 14½" x 21"
2173. **Margaret E. Smith.** Dining Room at Charlton, watercolour, signed i.i, artist label verso, 9" x 13"
2174. **L. Knight.** Seated ballerina and assistant, believed to be in the dressing room of the Diaghlev Ballet, pencil, bears signature Laura Knight 1920, bottom right 10" x 7".
2175. **L. M. Ghose.** Chinese river landscapes, with Sampans and boating figures, signed and dated 1919, charcoal, set of 3. 12" x 19".
2176. **19thC School.** Head and shoulders study of a screaming man, in a scarlet cloak, oil on canvas, 15½" x 13"
2177. **19thC School.** Study of a pensive man, seated on rocks, oil on tin, 10½" x 8½"
2178. **19thC School.** Study of a black and white border collie in a landscape, oil on board, 12" x 9½"
2179. **Attributed to Arthur Spooner.** Moored boats on the river, oil on canvas. 20" x 16", in a moulded frame.
2180. **20thC British school.** Portrait of an elderly bearded gentleman facing sinister wearing a hat, oil on canvas. 14" x 10" in a moulded plaster gilt frame.
2181. **Henry John Dobson (1858-1928).** An interior scene with an elderly lady knitting by the stove. Oil on canvas, signed H. J. Dobson RSW. 12" x 14", in a gilt and glazed frame.
2182. **19thC School.** 'Near Loch E xxx', oil on artist's board, signed with a monogram, indistinct title verso; 12" x 9".
2183. **M. A. Howigson?** Still life of Chrysanthemums, oil on canvas, indistinctly signed and dated l.l, 18" x 22"
2184. **After Landseer.** Blacksmith at work, oil on canvas, dated 1914, 26½" x 18"
2185. **W Hilton Greensmith.** Port***bach, Mouth of the Conway, North Wales, oil on canvas, signed bottom left, signed verso with title and dated 1884, 14" x 21", in a moulded gilt frame.
2186. **W. Hilton Greensmith.** Kirk White Cottage, Wilford, Notts, oil on canvas, signed verso with title and dated December 1886, 14" x 21", in a moulded gilt frame.
2187. **W Hamilton.** Aurora in a chariot with muses, watercolour, heightened body colour, signed W Hamilton R.A 1797. 5" x 26". *Provenance: Radburn Hall sale.*
2188. **Attributed to Mary Wright.** Sailing boats in a cove, oil on canvas. 18" x 26"
2189. **W. Hilton Greensmith (Attrib.)** Old Nottingham Pumping Station, oil on canvas, unsigned, 16" x 24", in a gilt moulded frame.
2190. **Alfred Augustus Glendening.** Shepherd and his flock and sheep dog, on a country lane by a meandering river, cottages beyond, oil on canvas, signed l.l. A A Glendening, 20" x 30"
2191. **W.V.** Study of a jockey and his reluctant mount, horses and riders in the distance, oil on canvas, signed with initials I.I, 14" x 10¼"
2192. **Manner of Henrietta Ronner Nip,** Kittens with a mousetrap, oil on canvas, 15" x 18½"
2193. **After Edward Munch.** Girls On A Bridge, oil on board, 28" x 25½"
2194. **Chas. H. Hague.** Rolling House, fine 1957, two-masted galleon in choppy seas, oil on board, signed I.I, title and artist's name verso, 16" x 20"
2195. **R. Wheelright (1870-1955).** Equestrian scene of a thrown rider and his bolting horse, oil on canvas, signed L.L, 11¼" x 15"
2196. **20thC Contemporary School.** The building of a fishing boat, oil on canvas, signed with initials T.L, 20" x 29½"



Lot No. 2202



Lot No. 2204



Lot No. 2207

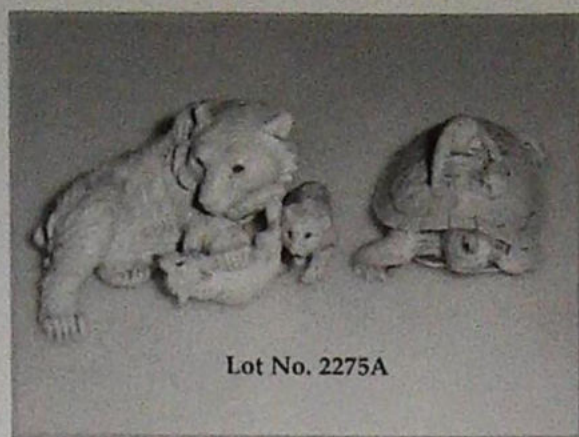
2197. **B.A Lewis.** North Shore, Teaby, oil on canvas, signed I.I, title and artist's name verso, dated 1887, 7" x 10"
2198. **Circle of James Stark.** Landscape, oil on canvas. 20" x 24", unframed.
2199. **19thC English school.** Landscape with country residence, pastel, 15" x 19"
2200. **After Clarkson Stanfield.** A coloured engraving of battleships near a coastline, signed in pencil, plate size 22" x 31"
2201. **Manner of Claude Lorrain.** A classical landscape with bay and figures at the waters edge, oil on canvas, 24" x 32", gilt framed
2202. **Charles James Lewis RA (1830-1892).** A Hay barge, watercolour, signed C J Lewis RA 1886, 15" x 26" gilt framed
2203. **Cries of London.** A set of 13 colour prints in Hogarth frames
2204. **Robert Taylor.** Gannet, a study of the aircraft with engine fired and stabilised to the aircraft carrier, oil on canvas, unsigned but bearing the retail label of The Belvoir Gallery, Grantham
2205. **After A Sutherland.** Battle of Omburman, 1898, chromolithograph, oak framed
2206. **After Vincent Haddelsey.** The Water Jump, and The Paddock, Market Rasen, two limited edition coloured prints, signed in pencil
2207. **Dennis Ramsay (1925 -).** A head and shoulders portrait of Sir Robert Menzies, pencil portrait, signed bottom left, MCMLXVII Kingsdown, 18" x 15"
2208. **Mark Huskinson.** Two oils on canvas portraits of hunters.
2209. **After Terence Cuneo.** The General at Camberley College. Colour print, signed in pencil by the artist and mounted in Hogarth frame
2210. **J Andrews.** A hand coloured map, depicting the Range of Clay, East Grinstead, to Godalming, plate size 20" x 27"
2211. **After J M W Turner.** A set of four colour vignettes, depicting the Land of Columbus, Amalfi, the Tranquil Hour and The Garden, paired in two oak frames
2212. **Robert Morden.** A hand coloured map of Lincolnshire, 14" x 16"
2213. **A pair of coloured prints,** published by Bowyer, depicting Amsterdam and Rosiere, 9" x 12"
2214. **Three colour engravings** of the new record office, Army and Navy club, and the Royal Mint; together with four others of Shorncliffe Camp (7)
2215. **A Victorian wool work picture** of children seated in ruins, 19" x 15"
2216. **A Victorian wool work picture** of a seated man and child, in a swept rosewood frame, 16" x 12"
2217. **A Victorian wool work picture,** depicting the birth of Christ, 29" x 21"
2218. **A Victorian wool work picture** of a parrot, in a moulded rosewood frame; and a further frame (2)
2219. **E. Charles.** Two cock birds in landscape, oil on panel, 15" x 19", in a moulded cream frame
2220. **After Lionel Edwards.** Hunters over a drystone wall in moorland landscape, reproduction colour print, limited edition 20/500, pub. by the Tryon Gallery, c.1978, image size 13½" x 21½".
- 2220A. **J.J Wilson.** In Scarborough Harbour, pencil sketch signed with initials, 4.5" x 6.5".
- 2220B. **Four various etchings,** signed in pencil by Renison, Hay and Slocombe
- 2220C. **A pair of portrait miniatures** of gentlemen in Asian dress, watercolour, 2½", oval

GLASS

2221. **A cranberry glass stemmed bowl** with pagoda cover and knob, 10"
2222. **A Schneider large bullet shape Art Glass bowl,** purple shaded bands with orange blobs, 12" diameter
2223. **Two cut crystal mallet shape liqueur decanters**
2224. **A selection of Royal Doulton crystal,** including decanter, tray and odd glasses
2225. **A small cranberry glass straight sided jug, 4";** a grape vine framed bowl with cranberry glass liner, 4½" diameter and a squared fluted edge cranberry glass bowl on clear glass shell feet, 3"
2226. **A large bulbous cranberry glass jug,** with reeded handle, 8½" tall
2227. **A Regency bowl** and four small bowls.



2228. An Orrefors vase, engraved with a young girl being overflowed by swans or cranes, clear glass, curved rectangular shape, base signed Orrefors. P3845 H.C.L?, 8" tall
2229. A Sabino blue glass globular vase with frosted clear folded faceted decoration, base with etched mark Sabino, France, 7" diameter, 7" tall (minor chips to rim)
2230. A Whitefriars green vase.
2231. A Venetian glass flask, as a curling fish in pink and clear glass with gold dust inclusions and yellow and black eyes, 6½"
2232. A polychrome glass basket with handle, 4" tall, 5" wide
2233. A pair of Venetian glass figures, male and female, in pink, white and clear glass with gold dust inclusions, Murano paper labels, 11" tall
2234. Four 19thC cut and etched glass champagne flutes
2235. A frosted amethyst flared vase
2236. A selection of 19thC cut glass table glasses, various styles and sizes
2237. Six 20thC cut crystal large flared glasses, with ringed stem and cut base marked WALSH (one chipped)
2238. A Monart perfume bottle in amethyst bubble glass, flared shape millefiori "paperweight" stopper, paper label to base, Monart Glass, Moncreiff, Scotland VII and HE246A, 5" tall
2239. A cameo glass vase, signed Galle. (AF)
2240. A 19thC green flared ale glass with ring turned stem, pontil, 4¾" tall
2241. A pair of cut crystal candle sticks, 10½" tall
2242. A 19thC Bohemian floral decorated cranberry glass vase on white metal foot, 9½" tall
2243. A reeded clear glass trumpet, 10"
2244. A 20thC etched glass straight sided jug with fern decoration; together with an amber glass vase, 7½" tall
2245. A 20thC cut glass wine jug with silver plated fittings, 9" tall
2246. A Victorian green glass dump, with flower enclosed, 4" tall
2247. A Victorian green glass dump, with flowers enclosed, 5½" tall
2248. A Victorian green glass dump, with flower enclosed, 6½" tall
2249. A Victorian green glass dump, with flower enclosed, 5½" tall
2250. A heavy cut crystal elliptical footed bowl, hobnail cut, 7" tall
2251. A heavy cut crystal bulbous jug, 7½" tall
2252. A heavy cut crystal tapering jug and bowl
2253. A heavy mouth blown smokey blue glass footed vase, 14" tall
2254. A Victorian waisted tall glass vase, with scalloped top, peridot green bands and scrolling gilt high lights, 14" tall
2255. A Victorian tall cut crystal tapered vase, scalloped and cut rim, 14" tall
2256. A banded glass handkerchief type vase, 14½" tall
2257. An amethyst bulbous glass lamp base, with spirally ribbed body in the manner of James Powell, 13"
2258. A 20thC studio glass vase, thickness banded dark turquoise, No B580 to base, 9" tall
2259. A marbled pink lustre tapering vase, with turned rim
2260. A pink bubble glass tapering vase, 8" high
2261. An amethyst ripple effect glass vase, 8" tall; together with a royal blue similar example, 10" tall
2262. Two 20thC large green glass vases
2263. A Victorian lemon pressed glass sugar bowl and milk jug; together with a commemorative covered jar (AF)
2264. Four small cranberry glass items
2265. A barley twist glass walking cane
- 2265A. A Venetian blue opaque and clear glass six branch chandelier with a baluster stem supporting a terminal bowl with pendant finial, the scrolling branches with flower sconces and surrounded by eight daffodil stems and foliage branches, (some damage).
2266. A cut crystal powder box, with guilloché enamel cover, 4" diameter

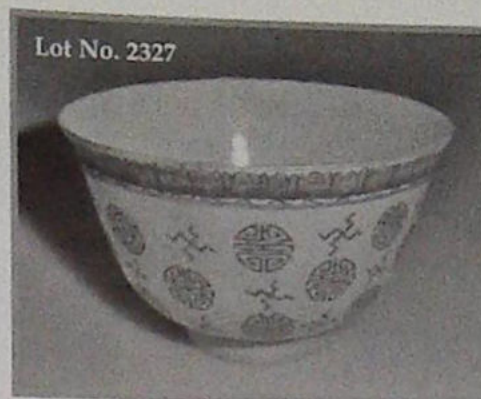


12.30PM

ORIENTAL CERAMICS AND WORKS OF ART

2267. A group of four Japanese ivory netsuke, of geishas, 20thC.
2268. A Japanese ivory carving of a crab, 5".
2269. A group of carved ivory figures of wild animals
2270. A group of miniature carved ivory figures of animals
2271. A 19thC Japanese circular wall plate, cast in relief with two carp amidst lily pads, signed verso, 12" diameter (damaged)
2272. An abalone shell trinket dish, carved in high relief with a celestial dragon and clouds around a circular well, the dragon with brown and black glass eyes, 8" wide
2273. An abalone shell trinket dish, carved in high relief with a celestial dragon and clouds around a circular well, the dragon with brown and black glass eyes, 7½" wide
2274. A Meiji period Japanese Imari charger, decorated in the basket pattern 12" diam.
2275. A cast iron kettle, with an overhead swing handle, the body mounted with two turtles, 8" high
- 2275A. A Meiji period Japanese ivory snuff box, carved as a giant turtle, the cover with a monkey finial, signed to the underside in the cover, 4" wide; an ivory carving of a Polar bear and two cubs, 4" wide
2276. A pair of Chinese brass incense burners, each surmounted with the dog of Fo, and having panelled bodies with stylized birds and flora; 14" high.
2277. A parcel gilt bronze Buddhist temple figure, 19" high
2278. A 19thC Chinese bronze vase, cut with figures and trailing foliage on a diaper ground, 17" high
2279. A Japanese bronze bottle vase, of lobed form, the long neck entwined with a serpent folding a crystal ball, 17" high
2280. A Chinese pottery temple figure of a goddess, part glazed in Tiang colours, Guangxu period
2281. A pair of 19thC turquoise ground cockerels, on rustic bases, 16" high.
2282. An 18thC Chinese bottle vase, with incised sea serpent body, green ground, 15" high
2283. A Chinese baluster vase, having court and chariot scenes on a Famille Noir ground, 15" high.
2284. A Chinese sang de boeuf baluster vase, 22" high (with table lamp insert, body not compromised)
2285. A Chinese sang de boeuf bottle vase, 17" high.
2286. A Chinese blue and white brush pot
2287. A Chinese blue and white shallow bowl (AF)
2288. A Chinese porcelain Nonya plate, turquoise ground with floral over glaze enamels. Guangxu period
2289. A 19thC Japanese pottery Vase, moulded with pagoda and cave entrance, two colour clay, 11" high
2290. A Japanese porcelain Ewer, decorated in Kutani colours, with koi around the body, 8½" high
2291. A Chinese blue and white Teapot, with cover, wire handles and floral decoration.
2292. A 19thC Chinese porcelain dish, lozenge shape decorated in enamel with peonies, 10" x 8", red seal mark to base
2293. A pair of 18thC Chinese lobed bottle vases, with famille vert enamelled decoration, 12"
2294. A pair of cloisonné plates of rectangular taper form, 7" x 10"
2295. A pair of 19thC Chinese cloisonné bowls, circular with gilt interiors, seal marks to base, 6" diameter
2296. Two cloisonné shallow bowls, decorated internally with dragons, 8" diameter; and a ginger jar, 7" high
2297. A pair of cloisonné bowls, decorated with serpents, 5½" diameter
2298. Cloisonné vases; two pairs and another
2299. A pair of cloisonné jars, with covers, and another (3)
2300. A cloisonné bowl, with oval lobed body.
2301. Various cloisonné trinket pieces (8)
2302. A Japanese cloisonné Kyoto plate, gilt wire enamelled with contrasting asymmetrical panels including a scene of mermaid-like creatures in the waves, Meiji period, 12" dia.
2303. A cloisonné squat bowl, decorated with a yellow dragon on a black ground, four character mark to base 12" diam.

2304. A pair of Japanese silver wired cloisonné bottle vases, decorated with pigeons and doves amongst trailing prunus blossom, on a dark blue ground, with lappel borders, 7" high
2305. A 19thC Japanese bronze and cloisonné jardiniere, with landscape and signature cast to interior base, 11" diameter
2306. A Chinese two-handle baluster vase, with banded key decoration, 13" high
2307. A modern Imari design vase and cover, of octagonal baluster shape, 14"
2308. A Japanese bowl, having patent alternating panels of court figures and dragons, on a hardwood stand, 10" diameter
2309. A Chinese bowl, having internal decoration of a European hunt scene, 10" diameter
2310. Two modern Chinese models, of a horse and shi-shi, 9"
2311. A Sumida pottery jug, with applied figures of a woman and children against a leaf moulded blue-buff ground, 5" high.
2312. Noritake porcelain, hand painted with desert scenes. (5)
2313. A Chinese bottle vase, blue ground and five small pieces of trinket items
2314. Five Chinese porcelain tea bowls, trail decorated in over-glaze blue, Quianlong period
2315. Two Chinese plates and a ginger jar
2316. A Chinese porcelain plaque, decorated in enamels, 10" diameter
2317. A Persian ceramic plaque with a heavy glaze, 9" x 12"
2318. A Japanese Kutani double gourd vase, signed, 8½", on hardwood plinth
2319. A Japanese satsuma coffee pot; baluster vase and Kutani vase (AF) (3)
2320. A modern Japanese globular vase.
2321. A Japanese tea bowl and saucer, in Imari colours, on stand
2322. A Japanese satsuma vase and cover, 8" high. (AF)
2323. A cloisonné sleeve vase with rustic body and legs, 7½" high
2324. A cloisonné bowl, decorated with flowers, 7" diameter
2325. An Imari bowl, with six character marks in under glaze blue, 7" diameter; a pair of Chinese bottle vases, 6" high; and a satsuma; and miniature sauce boat (AF) (4)
2326. Three 18thC porcelain soup bowls, having prunus decoration enclosed by a gilt border; and two matching plates



2327. A Chinese tea bowl, yellow ground with red lappel border and seal decoration. Gangxu period.
2328. A Chinese porcelain cabinet plate, decorated with goldfish within a trail over-glaze blue border. Quianlong period.
2329. An 18thC Chinese porcelain wine pot and cover, with baluster body, wicker and metal supported handle, 9" high.
2330. A 19thC Chinese baluster vase and cover, yellow ground and decorated in relief with butterflies and flora, moulded seal mark to base of Wang Binrong (1820-1860), 12" high.
2331. An unusual antique Chinese temple vase, white glazed, 15" high
2332. A Fukagawa part glazed vase, having chocolate and ochre glaze from the neck, body having figures in relief, 12" high
2333. A graduated set of three 19thC Chinese tankards, barrel shape with twist handles, decorated with family group cartouches on a puce diaper ground, 4", 5", and 6" high (repairs to largest)
2334. A Japanese Kutani porcelain box, of asymmetric pentagon form, having court figures to the cover, 6" wide
2335. A pair of Japanese lacquer panels, the curved frames enclosing Shibayama bone and mother of pearl figures playing stick-and-hoop and bat-and-ball, 22" x 16"
2336. Four pieces of un-worked ivory.

ANTIQUÉ & DECORATIVE FURNISHINGS

2337. A Victorian grey dapple painted rocking horse on stand, 36" long
2338. A set of four Regency brass inlaid rosewood dining chairs, with part turned cresting rail, horseshoe and rondel bar backs, looses framed seats over a bergere base, having sabre legs front and rear, various initials to frame
2339. A Regency gilt wood over mantel mirror, the moulded frieze having ball application, the triptych rectangular plates having ebonised slips, and enclosed four reeded columns with sphinx capitals, 62" wide, 24" high



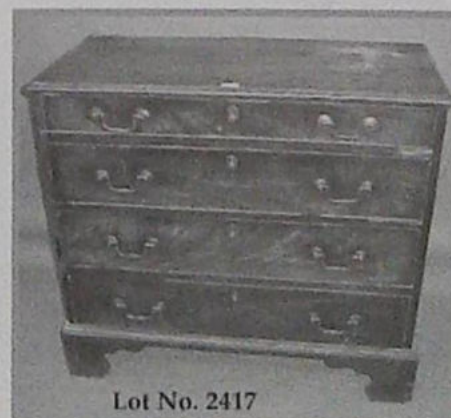
2340. A Venetian octagonal wall mirror, with applied decoration, 20" x 24"
2341. An Edwardian mahogany framed wall mirror, with oval bevelled plate, 28" wide
2342. A 19thC mahogany fret work wall mirror, in the Chippendale manner, 24" high
2343. A George III parcel gilt mahogany wall mirror, with swan neck pediment, having a central ho-ho bird and rococo embellished scrolling frame, in the Chippendale manner, rectangular plate, 44" high, 44" wide overall
2344. A Regency carved gilt wood girandole, having black and gilt carved eagles surmount, over a naturalistic and leaf frame, having ball decoration, reeded ebonised slip, and convex circular plate, 42" high
2345. A 19thC parcel gilt wall mirror, with angel mask and wing surmount and a small oval plate, 32" high
2346. A Regency gilt wood wall mirror surmounted with an eagle and scroll work, with circular beaded frame with reeded slip and convex glass. 33" high.
2347. A Victorian carved gilt wood and plaster cartouche pier glass with satyr mask and shell surmount, bevelled arched plate and scrolling frame. 32" wide, 72" high.
2348. A Victorian gilt wood and gesso overmantel mirror having torch and quiver entwined garland and ribbon surmount, extensively decorated with scroll work, acanthus egg and dart, reeded columns and floral lappets. 75" high 60" wide.
2349. A 19thC rectangular wall mirror with bevelled plate and carved scrolling wooden frame, finished in silver (in need of repair - further constituent parts present). 42" x 54".
2350. An early Victorian low side table with graduated shelves with turn columns and standing on turned legs, 46" wide.
2351. A Victorian oak hall stand with horn hangers and a stick-stand base.
2352. A fine Victorian flamed mahogany cheval mirror, the arch top plate having fret work surmount, and supported on turned pillars joined by a moulded and shaped platform, on scrolling legs, 78" high, 40" wide
2353. A Victorian oak centre table, with moulded oval top, supported on tulip carved uprights, with block platforms, turned legs and turned stretcher. 54" x 36"
2354. An Edwardian rosewood occasional table, with an oval marquetry top, inlaid with bone and satinwood, on square cabriole legs, with shaped under shelf, 26" x 19"
2355. A Victorian walnut pedestal table, with carved circular top, having burr veneer centre, on a taper twist column, with platform and tripod base, 20" diameter
2356. A mahogany pedestal table, with circular top, turned pillar and tripod base, 19" diameter
2357. A Georgian oak pedestal table, with circular tilt-top, baluster turned pillar and three out splay legs with spade feet, 24" diameter
2358. A late Victorian walnut occasional table, of octagonal form with quarter veneered and marquetry banded top, turned legs and gallery base, 32" diameter
2359. An Edwardian mahogany corner table, with moulded bow front, having single drawer, on square taper legs with conforming under shelf, 25" wide
2360. An Edwardian walnut occasional table, with canted and rectangular top, frieze drawer, square taper legs with stretcher and spade feet, 21" x 15"
2361. A George III mahogany supper table with dished top, baluster pillar and three outsplay legs, 25" diameter
2362. A George III mahogany butler's tray and folding stand
2363. A Victorian oak butler's tray and stand
2364. A George II walnut lowboy with moulded top, single frieze drawer over three with shaped apron, turned legs and pad feet, 30" wide
2365. An Edwardian walnut card table, with rectangular folding top, square taper legs with brass cup ceramic castors, 36" wide
2366. A George III mahogany commode with tray top and two drawers over a pull out base, 19" wide
2367. A George III mahogany commode with tray top and two drawers over a pull out base, 19" wide

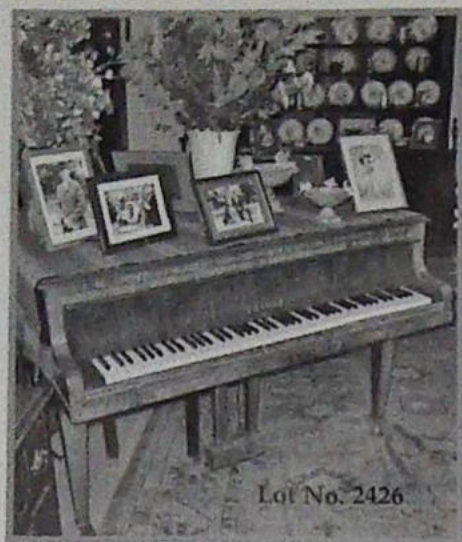


2368. A George III mahogany night table with tray top and single door, with moulded legs, 15" wide
2369. A George III night commode with tray top, tambour front (AF), and pull out base, 20" wide
2370. A George II oak and elm lowboy with moulded top, over two drawers with pierced back plate brass handles, open fret shaped Cupid's bow frieze and square moulded legs, 31" wide
2371. A George II oak lowboy with moulded top and single drawer over two short with brass swan neck handles, shaped apron and moulded legs, 34" wide
2372. A pair of oak candle stands, with 18thC baluster pillars, 21" high
2373. An Edwardian walnut card table, with rectangular folding top square legs with book trough base, square brass cup ceramic castors, and bearing the labels of Edwards & Sons, 181 and 188 Regents Street, London, Rd. 404685, and stamped 1161 to the frieze, 26" wide
2374. A 19thC mahogany Canterbury with pierced sides to stack/receive papers.
2375. A Victorian walnut marquetry box seat, with studded leather top, canted corners, and plinth base, 20" x 14"
2376. A Victorian walnut canterbury, with shallow sloping X frame dividing top, two frieze drawers with knob handles, and turned feet, 22" x 17"
2377. An early 20thC black lacquer and chinoiserie three tier folding cake stand
2378. A 16th / 17thC elm sword chest, 46" wide
2379. A George III oval mahogany cellaret with brass banding, loop handles, and square taper legs. 26" wide, 22" high.
2380. An 18thC oak padfoot dining table, with oval folding top and gate leg action, 4'
2381. An 17thC and later oak gateleg table, with oval moulded top, baluster turned upright, block feet and platform, 33"
2382. A 17thC oak refectory table, with reduced two plank top, on a turned gun barrel leg, with low level stretcher, 30" x 72"
2383. A 19thC mahogany corner folding gate leg table, the lift top revealing a frieze compartment, on turned legs with pad feet, 36" wide
2384. A 19thC en grisaille painted night table
2385. A Victorian ebonised centre table, with octagonal top, having marquetry banding and burr centre field, having turned uprights and stretcher, 24" diameter
2386. An Edwardian mahogany occasional table, with cross banded oval top, with flamed centre oval panel, on square taper legs with platform stretcher, 24" x 17"
2387. A Victorian mahogany Sutherland table, with moulded rectangular top, turned supports, gateleg and stretcher, with brass cup castors, 36" x 42"
2388. A George III mahogany lowboy with moulded top, full length drawer over two, with brass swan neck handles, shaped apron, and square taper legs, 34" wide
2389. A Baroque style gilt standard lamp
2390. An Edwardian mahogany standard lamp, with custer column tapering stem, reeded baluster base, and turned platform with bun feet
2391. A 19thC French mahogany ladies dressing stand, with shield shape mirror, tambour compartments and shelves, two drawers over a shaped frieze, with square taper legs and shaped platform, 24" wide
2392. An early 19thC string inlaid mahogany dressing table, converted from a John Boardwood & Son square piano, 66" wide
2393. A Victorian mahogany circular tilt top breakfast table with lion paw feet.
2394. A Regency flamed mahogany breakfast table, with circular tilt top, cross banded with rose wood, the turned pillar having a quatrefoil platform raised on acanthus carved and reeded sabre legs, with brass paw castors, 48" diameter
2395. A 19thC mahogany dressing table, with cross banded moulded top, three frieze drawers, shaped knee hole and square legs, 40" wide
2396. An Edwardian oak marquetry wash stand, with marble top and barley twist legs, 42" wide
2397. A Victorian mahogany step commode with panelled front and deep plinth
2398. An early 19thC flamed mahogany side cabinet, converted from a knee hole desk, bringing the pedestals to a central point and having drawers over, 35" wide.



2399. A George III mahogany demi-lune card table with ebony strung folding top and ring turned legs
2400. A fine George III bombe commode, having a rosewood cross banded marquetry panelled top, inlaid with musical trophies, floral panels to the shaped sides and doors, enclosed with ormolu rococo adornments, the doors revealing shaped oak upright and shelves, 48" wide, 24" deep, 34" high
2401. A Victorian mahogany chest of six graduate drawers with knob handles, the top drawer having four press trays, 48" wide
2402. A Victorian plum pudding mahogany D-front chest of two short and two long graduated drawers, with knob handles and plinth, 42" wide
2403. A George III flamed mahogany bow front chest of two short and three long graduated drawers with oval solid back plate, replacement handles, 42" wide
2404. A George III mahogany serpentine chest, of four graduated drawers, with brass ring handles and splay feet; 42" wide.
2405. A Regency mahogany chest of two short and three long graduated drawers, with octagonal pierced solid back plate handles, checked apron and splay feet, 41" wide
2406. A Regency mahogany chest of five graduated drawers with faux painted knob handles and bracket feet, 42" wide
2407. A George III mahogany chest of two short and three long graduated drawers with moulded top, cast brass loop handles and escutcheons and bracket feet. 38" wide.
2408. A George III oak chest of three short and three long graduated drawers, with brass swan neck handles and turned feet, 38" wide
2409. An early 18thC panelled oak mule chest, with moulded top having two fielded panels over two drawers with knob handles and bracket feet, 43" wide
2410. An early 18thC oak dresser base, with moulded top, two frieze drawers with brass swan neck handles over a configuration of four shaped fielded panels, the two centre being drawers and raised stiles, 56" wide
2411. An 18thC cross and feather banded walnut chest (upper part from a chest-on-chest).
2412. An 18thC oak chest, on later three drawer base with bracket feet, 33" wide
2413. A late 17thC / Early 18thC oak dresser base, with moulded top, an arrangement of three long and two short frieze drawers divided by stiles and muntins over two drawers and two fielded panel doors, raised on 1" stiles, 74" wide
2414. A late 17thC oak panelled chest of two short and long drawers with dentil to frieze, replacement knob handles and plinth base, 43" wide
2415. A George III mahogany secretaire chest, the secretaire drawer having three faux drawer fronts, revealing a fitted interior over three graduated drawers with oval brass back plate loop handles and bracket feet, 42" wide
2416. A William IV mahogany bow front scotch chest, having a gadroon carved top, pluster column supports, enclosing two short and three long graduated bow front drawers, with brass oval back plate loop handles, 46" wide
2417. A George III flamed mahogany chest of four drawers with brass swan neck handles, moulded top and bracket feet, 36" wide
2418. A pair of 19thC Italian black and gilt wooden standard lamps with matching parchment shades (damaged), 60" high
2419. A Regency mahogany secretaire chest, with caddy top, secretaire drawer with fitted interior over three graduated drawers, with oval back plate handles, shaped apron and bracket feet, 36" wide.
2420. A Regency mahogany table mirror with oval plate, scroll supports, 'D' shaped front with three shaped drawers and ball feet. 23" wide.
2421. A 1920's Barbola table mirror, with polychrome floral encrusted frame, rectangular bevel plate, and easel stand, 18" high

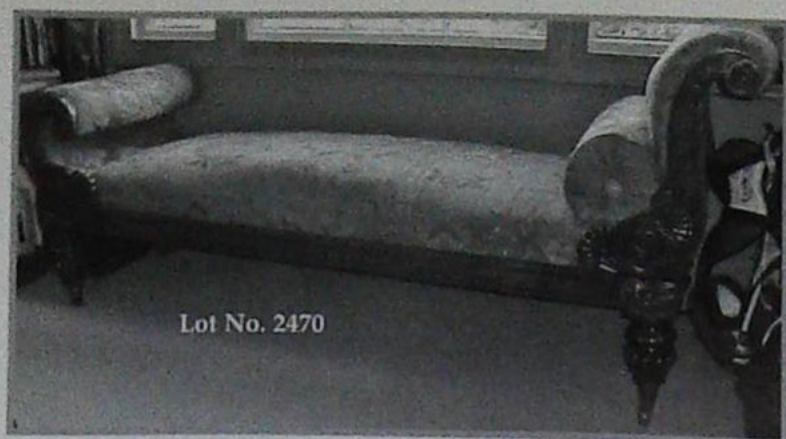




2422. A Victorian mahogany dressing table mirror, with rectangular plate and serpentine base, 21" high
2423. An Edwardian mahogany dressing table mirror, with oval bevelled plate, suspended on a shaped frame, 30" high
2424. An Edwardian mahogany dressing table mirror, with shaped rectangular plate, 22" high
2425. A Regency mahogany table mirror with bevelled rectangular plate, turned uprights, 'D' shaped base with three shaped drawers and ball feet. 27" wide.
2426. A 20thC walnut cased boudoir grand piano, by Cramer of London, serial no. 125984, 50" long
2427. A Regency mahogany card table, with D shape folding top, turned pillar and four outplay legs with bras terminals and castors, 36" wide
2428. A George III mahogany side table, with moulded top, frieze drawer with knob handles, and string inlaid square taper legs, 31" wide
2429. A late Victorian mahogany towel rail
2430. An Edwardian mahogany clothes horse
2431. A Victorian burr walnut breakfront side cabinet, with string inlaid and moulded top, strung frieze over a column inset central marquetry door, flanked by two glazed panel doors on plinth, 70" wide
2432. An Edwardian string inlaid mahogany bow front corner cabinet, with two glazed doors and under-shelf. 29" wide, 53" high.
2433. A Victorian walnut knee hole desk, with moulded top, three frieze drawers, and three drawers to each pedestal, with knob handles and plinth base, 54" wide
2434. A late Victorian walnut twin pedestal kneehole desk, with gilt and tooled leather inset top, three frieze drawers and three per pedestal, having brass pierced back plate handles, reeded uprights with a carved oval patera and plinth base, 48" wide, 24" deep
2435. A William IV mahogany writing table, with moulded top inset with gilt and tooled leather skiver, five drawers with knob handles, turned legs and brass cup castors, 48" x 27"
2436. A Regency mahogany and rosewood cross-banded card table with canted rectangular folding top, writhen pedestal, circular boss, supported on four reeded sabre legs with brass paw castors. 36" wide.
2437. A Sheraton mahogany card table with 'D' shaped string inlaid folding top, cross-banded frieze, square table legs, terminating splayed feet. 36" wide.
2438. An Edwardian mahogany chest of seven graduated drawers with faux onyx knob handles and plinth, 24" wide, 43" high
2439. A George III mahogany chest of two short and three long graduated drawers, with brass swan neck handles, and having cross-banded top and bracket feet. 38" wide.
2440. A George III mahogany bow front sideboard, the cross-banded top with three frieze drawers enclosed by square taper legs having oval patera inlay, and terminating in spade feet. 46" wide.
2441. A George III mahogany bow front sideboard, with sellarette drawer, and two other enclosing a frieze drawer, on square taper legs, with spade feet, 5' wide
2442. A reproduction polished steel club fender with leather seats, 56" wide internal
2443. A brass club fender, with leather cushion top rail, 63" wide.
2444. A 17thC oak coffer, with three panel top, demi-lune carved frieze over two panels, and raised on stiles, 41" wide, 20" deep, 23" high
2445. A 19thC cross-banded satinwood writing table with leather inset top and having an arrangement of two frieze drawers over two pedestal drawers on square taper legs with brass sleeve castors. 43" wide, 29" deep.
2446. A 19thC mahogany dressing table mirror, with oval plate and shaped frame, 18" high
2447. An Edwardian oak hanging smokers' wall cupboard, having embossed metal panels, depicting Shakespeare, and Shakespeare's house and Anne Hathaway's cottage, 27" wide, 16" high
2448. A Gilbert cabinet gramophone, cased in a moulded oak cabinet on barley twist legs with 'H' frame stretcher, 34" wide, 20" deep, together with a selection of 78rpm records.



2449. A **Columbia Grafonola**, with a mahogany case, raised on square taper legs, with spade feet, 30" wide
2450. A **Regency mahogany sofa table** with rosewood cross-banded top, two frieze and opposing dummy drawers with circular ring handle, turned pillar and four sable legs with brass paw castors. 52" x 30".
2451. An **early 19thC oak country dresser**, with panelled plate rack, frieze drawer over an open centre, enclosed by panel doors with brass knob handles, and raised on turned feet, 59" wide, 87" high
2452. An **oak armoire** made from period pieces and formed with a cornice over two 2 panel doors, and drop base with bracket feet, 43" wide
2453. A **Victorian mahogany break-front four door wardrobe compactum**, with arched cornice, centre having two doors revealing linen press drawers over two short and two long graduated drawers, with solid brass backplate handles flanked by full length hanging compartments, 90" wide
2454. A **George III mahogany linen press** with dentil moulded cornice over two panelled doors and two deep drawers over a single, with replacement brass swan neck handles, on bracket feet, 52" wide
2455. An **early 20thC oak sideboard**, the panelled back having egg and dart carved frieze, panelled back with barley twist supports, the base having two drawers over two moulded doors, enclosed by barley twist uprights on stiles with bun feet, 72" wide, 66" high
2456. A **George III plum pudding mahogany chest on chest** having moulded and canted cornice, the upper parts having three short and three long graduate drawers, enclosed by a reeded canted side, the lower part having three graduated drawers with cast brass swan neck handles and open escutcheons, on ball feet, 44" and 6' high
2457. A **George III and later mahogany bureau bookcase**, with moulded cornice, two arch astragal glazed doors, fall flap revealing a fitted interior resting on lopers, over two short and two long graduated drawers with brass loop handles and bracket feet; 38" wide, 86" high.
2458. A **late Victorian walnut chiffonier**, with gallery and mirror back, two drawers over two scratch carved doors, on plinth, 48" wide
2459. A **four panelled leather screen** with gilt and pale turquoise floral decoration, possibly Spanish, each panel 24" wide, 7' high
2460. A **George III mahogany secretaire breakfront bookcase**, the upper parts having a moulded frieze over four Gothic arch astragal glazed doors, the base having a central secretaire with fitted interior, over three graduated drawers with ebony stringing, oval pressed brass back plate handles, flanked a pair of drawers over a single cupboard, raised on turned feet. 44" wide
2461. A **George III mahogany secretaire bookcase**, the upper part having moulded cornice two astragal glazed doors over a fitted secretaire drawer and three graduated drawers over brass back-plate handles, raised on bracket feet, 44" wide, 83" high
2462. A **fine Victorian walnut boudoir sofa**, with turned and carved framing on brass castors and upholstered in buttoned pink floral damask, 42" wide
2463. A **Victorian carved walnut spoon back nursing chair**, with overstuffed button back and turned fore-legs
2464. A **19thC parcel gilt fauteuil**, in Louis XV style, 25" wide
2465. A **Victorian style stained beech nursing chair**, with cartouche back and scrolling frame, upholstered in sculptured red Dralon
2466. A **pair of Victorian walnut low tub chairs**, with brass and ceramic castors, and upholstered in red and green floral button tapestry
2467. A **Victorian aesthetic design nursing chair**, with ebonised and burr walnut framing
2468. A **pair of 1960's / 70's bentwood laminate armchairs**, upholstered with loose green leather pads
2469. A **pair of Victorian tub chairs** with candy twist gallery and writhen forelegs (in need of re-upholstery)
2470. A **Victorian mahogany scroll-end sofa** with floral carved scroll end, channelled frame and part reeded taper tuned legs with brass castors.



2471. A 19thC button back armchair, with crimson upholstery, on giltwood cabriole legs with strapwork detail and brass castors.
2472. A Victorian mahogany framed spoon back armchair, with scrolling arms, serpentine seat and scroll legs, upholstered in mushroom velour
2473. A set of eight (6+2) early 20thC mahogany dining chairs, with shield backs in the Hepplewhite manner, having pierced and waisted splats, drop-in seats with bird of paradise upholstery and reeded block legs
2474. A suite of four late Victorian mahogany salon chairs, comprising a pair of open armchairs and two side chairs, having pierced vase splat with floral rondel, cabriole legs and having tapestry upholstery
2475. A set of four early 19thC mahogany gate back country dining chairs, with drop in seats
2476. An early 19thC mahogany rail back carver chair, with scrolling arms, drop in seat and square taper legs
2477. Three oak and elm ladder back chairs, with rush seat on turned legs.
2478. A pair of late Victorian walnut salon chairs, with shaped cresting rail, open work and pierced vase splats, and cabriole legs
2479. A George III mahogany open armchair, with pierced vase splat, in the Chippendale manner, drop in seats and square legs
2480. An early 19thC ash and elm Windsor chair, with solid splat and spindle back, turned forelegs and H frame stretcher
2481. A George III mahogany carver chair, with pierced vase splat, drop in seat and square taper legs with plain stretchers
2482. A Sheraton period gate back dining chair with drop in seat (various damages)
2483. A Victorian stained beech prie dieu chair, with bobbin turned supports
2484. An Edwardian oak open armchair, with barley twist uprights and legs, upholstered in studded tapestry
2485. A pair of Cromwellian style carved oak open armchairs, with barley twist and Bacchanalian carved backs, studded leather seats and barley twist framing
2486. A Victorian mahogany chaise longue, having left hand baulk, scrolling and serpentine framing, with cabriole legs, upholstered in a buttoned damask
2487. A set of four 19thC continental satinwood dining chairs, with burr and ebonised banding, upholstered in a floral chintz upholstery
2488. An Edwardian string inlaid mahogany chest on chest, with cast ring handles and square taper legs, 32" wide, 64" high
2489. A 19thC corner seat with yellow damask upholstery and raised on acanthus carved taper legs with brass cup castors.
2490. A George III mahogany bachelors chest with moulded top, brushing slide over four graduated cock beaded drawers, with rococo cast brass swan neck handle, escutcheons and bracket feet, 33" wide
2491. An early 20thC spindle back open arm chair, with turned uprights and spindled frame in the style of Gimson.
2492. A bobbin turned stool, with string top
2493. A Victorian flamed mahogany single wardrobe, with arched panel door, 40" wide, 76" high
2494. A Victorian flamed mahogany single wardrobe, with arched panel door, 40" wide, 76" high
2496. An interesting stone coping plaque, depicting three angels in relief
2497. Various stone gargoyles, keystone, etc
2498. A Blashfield statue of a robed classical goddess, the head detached and one arm missing, 45" high
2499. A Regency wirework trough planter, of oval form, on raised stand, 36" x 12"
2500. A mahogany long case clock case (no movement), 12" aperture, 77" high



CLOCKS

2501. An early 18thC black lacquer longcase clock, having caddy top with fret work decoration and pillared hood, full length trunk door with chinoiserie landscape decoration, and pagoda to base, the 12" brass dial having the makers rondel *John Fox, Grantham*, enclosed by applied cast amorini mask spandrels, the silver chapter ring having Roman hour and Arabic minutes numerals, the matted centre having seconds ring and date aperture, eight day movement, striking a bell, 92" high including ball finial
2502. An oak longcase clock, having inset barley twist hood, full length trunk door, the 12" square dial having applied cast spandrels, the silvered chapter ring inscribed *Tim Mafon, Gainsboro*, having Roman hour numerals and arabic minutes, the matted centre having seconds ring and date aperture, eight day movement, striking a bell, 79" high
2503. An oak longcase clock, with pillared hood and full length door, with canted trunk, the painted 11" dial having moon roller to arch, painted with Belton House, the spandrels painted with Grantham scenes, being The King's School, Boothby Pagnell Manor, Angel Hotel and The Blue Pig, the chapter ring having Roman hour numerals enclosing the subsidiary dials, and marked *L Springfield, Grantham*, eight day movement, striking on a bell, 89" high
2504. A walnut longcase clock, having inset pillared hood, full length trunk door, the 11" square brass dial having applied cast spandrels, the silvered chapter ring having Roman hour numerals, arabic minutes, the chaste centrefield having second ring and maker plaque, *L Springfield*, eight day movement, striking on a bell, 77" high
2505. A mahogany longcase clock, having arched and reeded inset pillared hood, full length trunk door and bracket feet, the 11" painted dial having a galleon to the arch, rose painted spandrels, Roman hour numerals and subsidiary seconds and date rings, and painted *L Springfield, Grantham*, eight day movement, striking on a bell, 78" high
2506. A walnut longcase clock, having inset pillared hood, full length trunk door, the 10" brass dial having applied cast spandrels, the silvered chapter ring having Roman hour and Arabic minute numerals, the chaste centrefield having seconds ring and date aperture, and inscribed *John Fox, Grantham*, eight day movement striking on a bell, 76" high
2507. A mahogany grandmother timepiece, with inset column hood, glazed trunk door and panelled base, brass 8" square dial, with silvered chapter ring having Roman hour numerals, eight day movement, 66" high
2508. A George III mahogany longcase clock, with swan neck reeded pillared hood, the trunk having full length shaped door, with quarter inset reeded columns, the painted 12" dial having an urn to the arch, floral spandrels, Roman hour numerals, subsidiary date and second rings, marked *G. B ***burgh*, eight day movement striking a bell, 85" high
2509. A George III oak longcase clock, having dentil moulded cornice with fruitwood columns, cross-banded trunk door and bracket feet, the painted 11" dial having floral spandrels, Roman hour numeral, arabic minutes and date crescent, thirty hour movement striking a bell, 78" high
2510. An early 19thC flamed mahogany and oak longcase clock, with swan neck turned pillared hood, short trunk door enclosed by quarter inset reeded columns, cross-banded and lozenge inlaid base on ogee bracket feet, the 13½" painted dial having moon roller to arch, tigers to the spandrels, Roman hour numerals, seconds ring and date crescent, and marked *John Cartwright, Oldbury*, eight day movement, striking on a bell, 91" high
2511. A 19thC Vienna style walnut wall clock, with ball and spike pediment, full length glazed door, with turned beech uprights and base, the two part 7" enamel dial having Roman numerals and subsidiary seconds ring, single train, 52" high
2512. A 19thC gilt brass cartell clock, of rococo form, having a 4¼" enamel dial and eight day movement, 20" high
2514. A 19thC rosewood wheel barometer, of small proportions, having silvered hygrometer over a bow front glazed silvered thermometer, over 4½" silvered barometer with bezel, the level inscribed *Wilson, Stamford*, 36" high
2515. A late Victorian carved walnut aneroid barometer, with loop and pillar top, 14" high
2516. A German Neuberger, parcel gilt and painted bracket clock and bracket, 20" high plus bracket



2517. A 19thC French gilt brass mantel clock of aesthetic influence, having a black enamel dial, eight day movement, striking a bell, 12" high
2518. A 19thC French marble and ormolu portico clock of neoclassical design, having enamel dial with arabic numerals, eight day movement, striking a bell, 17" high
2519. A 19thC French ormolu figural mantel clock, with a lady holding a book to the surmount, enamel dial with Roman numerals, eight day movement, striking a bell, 16" high
2520. A 19thC French gilt bronze figural mantel clock, of rococo form and having seated figure of an explorer to the surmount, enamel dial with Roman numerals, eight day movement, striking a bell, 22" high
2521. A Sitzendorf porcelain figural mantel clock, retailed by Tiffany and Co., New York, the floral rococo case embellished with pink flowers, cupids and a cherub with a cornucopia, 8-day movement striking a bell; 12" wide, 12" high.
2522. A Junghans ATO mantel clock, with dome, 9" high
2523. A late 19thC French tortoiseshell portico clock, with gilt metal adornments to the four Corinthian column support, open cut decoration to base, the 3 3/4" cream enamelled dial having Roman numerals, and marked Leroy à Paris, having an eight-day movement striking a bell, similarly inscribed, stamped, 12" high
2524. An Edwardian mahogany balloon mantel timepiece, with oval patera inlay, 9" high
2525. A 20thC Elliot mahogany cased mantel clock, with silver dial, cast brass spandrels, Roman numerals to the chapter ring, eight day chiming movement, 9" high
2526. A 19thC French ormolu clock garniture, having cherub surmount, enamel dial and painted porcelain plaques to the main clock, and cherub supported candlesticks
2528. A 19thC gilt brass carriage clock, with full enamel dial, chapter ring having Roman numerals, eight-day movement striking a gong, presentation inscription, 11 1/2" high
2529. A gilt brass repeater carriage clock, with raised enamel chapter ring, inscribed Hall & Co Manchester, eight day movement striking a gong, 8" high
2530. A 19thC gilt brass carriage timepiece, having convex porcelain chapter ring, 6" high
2531. A French gilt metal miniature carriage timepiece, the enamel having subsidiary date and month rings, 3" high
2532. A 19thC polished slate architectural clock garniture, with an Ansonia movement, clock 16" wide
2533. A 19thC French oak cased mantel time piece with blue and white floral enamel dial and frieze. 13" high.
2534. A gilt brass anniversary clock, under a glass domed, 12" high
2535. A Victorian rosewood mantel clock, with a floral marquetry case, 3" enamel dial with Roman numerals, eight day movement, striking a bell, on ball feet, 9" high
2536. A 19thC French polished slate and marble architectural mantel clock, with scratch carved gilt decoration, Roman numeral and marked H R Y Marc Harris, eight day movement, striking a gong, 10 1/2" high
2537. A brass ships bulkhead clock, with enamel dial and Roman numeral and subsidiary seconds ring, 9" diameter

TEXTILES & TOYS

To include a small selection of toys, puzzles, textiles, rugs, leopard skins and clothing viz. various furs and jackets by Jaeger. A full list of lots will be listed on the website.



2540. A Steiff Wild Boar

End of sale.

IMPORTANT NOTES FOR PURCHASERS

1. **PAYMENT:** Must be made in full immediately after the Auction. The following methods of payment are acceptable.
a) Cash b) Bankers Draft c) Building Society Cheque d) Cheques (accompanied by a valid card.)
e) Debit & Credit Cards (the latter subject to a charge of 2% + VAT).

PAYING BY CHEQUE?

If you are not known to the Auctioneers and wish to pay by cheque above your guarantee card limit WE WILL RETAIN THE GOODS until it has been cleared (7 days). There will be NO EXCEPTIONS to our policy. To avoid UNDUE EMBARRASSMENT for yourself or to our staff, please do not ask for preferential treatment. If you wish to clear goods immediately bring a letter from your Bank or a suitable guarantor reference.

2. **BUYERS PREMIUM** of 15% (with a minimum of £1 per lot) is payable on all lots, plus VAT.
3. **REMOVAL OF PURCHASES:** Goods must be collected as soon as they are paid for, and in the 2 Working Days following the sale. If goods are not collected on these days we reserve the right to charge £1 per lot per day thereafter.
4. **COMMISSION BIDS:** If you are unable to attend this or any of our future sales we will be pleased to bid on your behalf. We always purchase at the lowest possible price, subject to other bids and reserves.
All bids must be handed to the office on an official form. It remains the responsibility of prospective purchasers to contact GOLDINGS to confirm whether their bids have been successful.
5. **TELEPHONE BIDS:** There are inherent dangers with this practice, therefore all such arrangements are made entirely at the bidder's risk. Telephone bids will only be accepted if the lower estimate is £500 or above. For lots with a lower estimate below this figure Commission Bids Only will be accepted.
6. **SMOKING** is not permitted in any part of the Saleroom.
7. **REFRESHMENTS** will be available Saleday.
8. **ACCOUNT TRANSFER** will not be recognised after the sale. If any lots are purchased for another person, this must be declared at the fall of the hammer.
9. **ESTIMATES.** Our Auctioneers will be available during viewing to give guidance on your prospective purchases.



CATALOGUING GLOSSARY

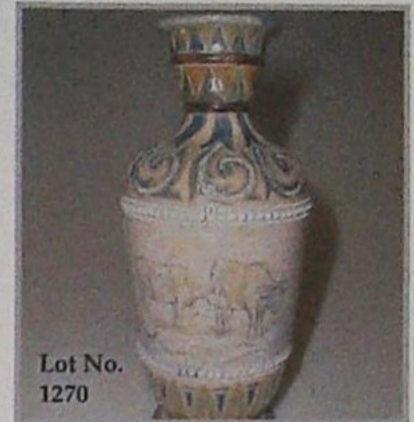
- a) Generally: 'As Found' (AF). This term indicates the lot has some damage. Its absence does not indicate that the lot is free of defect. All lots are SOLD AS SEEN.
- b) Paintings: 'Signed, initialled, monogrammed' - This refers to the present state of the work and is not an attribution is given or inferred.
- c) Books and printed matter: These items are not sold subject to collation and are not returnable once removed from the premises.
- d) Silver & Jewellery: Weights given are approximations given by basic instruments. Quality assessments, dimensions and estimated weights attributed to diamonds and other gemstones have been determined without unsetting the stones, unless otherwise stated, and should, therefore be considered only as approximate, because of limitations imposed by the mount. Generally, estimated weights are calculated by applying standard formulae to the measurements taken. Gemmological descriptions are based on testing carried out with standard equipment, without having the stones unset. Treatments or enhancements that are considered permanent and do not fundamentally alter the nature of the gemstone, such as heat-treatment, and certain traditional processes such as the staining of agates, and colourless waxing and oiling, are not necessarily disclosed.

CONDITIONS OF SALE

1. These Conditions together with any Notices to Purchasers are the only terms and conditions subject to which Golding Young & Co ("the Auctioneers"), as agents for the Vendor will sell goods to a purchaser ("the Bidder") and all other conditions, whether express, or implied at common law or by statute as are capable of lawful exclusion are hereby excluded.
2. The highest bidder shall be the buyer. The Auctioneers reserve the right of regulating the biddings; of rejecting any bid; and of bidding for, withdrawing, consolidating, dividing or altering the order of lots.
3. The purchase money for each lot with the usual commission of 15% (with a minimum of £1 per lot) plus VAT at the current rate shall be paid at the fall of the hammer (if required). Each lot at the fall of the hammer shall be at the sole risk and expense of the buyer, and shall be paid for and removed immediately after the conclusion of the sale, but no lot shall become the property of the buyer, or be removable until paid for, and if taken away in contravention of these conditions without an order for removal signed by the Auctioneers, they shall have power to seize the same by their servants or agents, or otherwise, or the Auctioneers may recover either the lot sold or the price thereof (at their option) by action at law.
4. No contra account of any description whatever will be allowed to the buyer as a set off, and payment for each Lot shall be made to the Auctioneers or their clerk only, and a buyer paying by cheque must give satisfactory references.
5. For all purposes of this sale the Clerk of the Auctioneers shall be deemed to be the agent of both seller and buyer.
6. A bidder shall not be allowed to retract his bidding after the fall of the hammer, and he shall give up his full name and address if required. The Auctioneers will not recognise the transfer of any lot from one buyer to another, nor make any alteration in the sale book in respect thereof.
7. The Auctioneers are acting only as agents, and give no personal warranty as to the condition, quality or authenticity of any chattels offered for Auction. Any catalogue description is given merely as guide to purchasers, any description can be changed from the rostrum before the lot is sold. If a purchaser buys without previous inspection he will do so at his own risk.
8. Notwithstanding any other terms in these Conditions, if within 7 days of the Sale a purchaser gives notice in writing that a lot is a deliberate forgery, with supporting factual evidence, the Auctioneers may rescind the transaction. The burden of factual proof lies with purchaser, mere opinions will not satisfy. This benefit is not assignable.
9. If any buyer neglect or refuse to comply with the above conditions or any of them, his deposit money (if any) shall be forfeited, and the lot uncleared may, at the option of the Auctioneers, be resold without notice by public auction or private treaty, and any loss occasioned by such re-sale together with all expenses attendant thereon, or arising under these conditions shall be paid for by the defaulter and be recoverable as and for liquidated damages. This condition is however without prejudice to the right of the Auctioneers to enforce the contract made at this sale if they think fit.
10. Any Notes for Purchasers and Catalogue Glossaries will be construed as Conditions of Sale.
11. The Auctioneers shall be the sole Arbitrators in all matters of dispute relating to those conditions both as between the seller and the buyer and between the several bidders and buyers and their determination on all matters shall be final and binding on all parties concerned.



Lot No.
1105



Lot No.
1270



Lot No. 1376



Lot No. 153



Lot No.
2071



Lot No. 2077

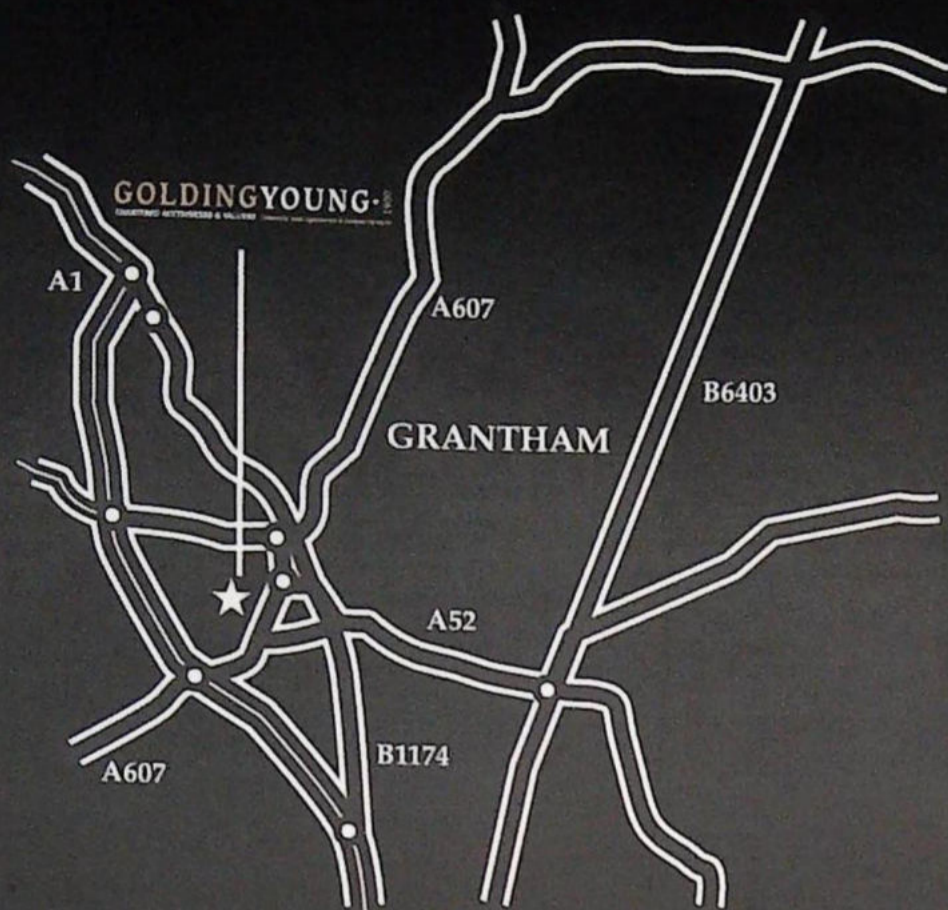


Lot No. 2060



Lot No. 1301

How to find us



By Road

From whichever direction you approach Grantham, you can find us if you observe the following rules: Follow signs for Town Centre. Follow signs for Railway Station. At the roundabout leading to "Station Road", continue around to a double viaduct/ railway bridge. Take the right hand arch which leads into Old Wharf Road.

The Salerooms are the first building on the right. There are parking and loading bays in front of the premises.

By Train

The auction house is situated very closely to the Railway Station, which is served by the East Coast Main Line. Trains run approximately every 20 minutes from Kings Cross during peak times.



Lot No. 185



Lot No. 2066



Lot No. 2094



Lot No. 1309



Lot No. 1425



Lot No. 1393

WWW.GOLDINGYOUNG.COM

GOLDING YOUNG ♦ 1900

CHARTERED AUCTIONEERS & VALUERS Commercial Asset Agents ♦ Arts & Antiques Surveyors

Golding Young & Co., Old Wharf Road, Grantham, Lincolnshire NG31 7AA

Telephone: 01476 565118 Fax: 01476 561475 Email: enquiries@goldingyoung.com