



EST
1864

GOLDING YOUNG

Fine Art Sale

Wednesday 27th January 2016



CHARTERED AUCTIONEERS & VALUERS • ARTS & ANTIQUES SURVEYORS

EST
1864
GOLDING YOUNG



Thinking of selling?

Executors, solicitors, accountants, insurers, corporations and government departments, have to exhibit due diligence when instructing. Use this checklist to do the same, with a few reasons why you may wish to choose us.

We are regulated by RICS
Better Regulation for Us.
Better Protection for You.
Accept Nothing Less.

Our live webcast auctions
Our 150 years' experience means we get the best for our clients from holding our important sales live webcast on the internet.

Our sales results
December 2015 saw our 88th consecutive month with a sale at either Bourne, Grantham or Lincoln producing a sold rate of over 90%. Good advice, great results for hundreds of vendors every month.

Join their success with an entry in our next sale!

goldingyoung.com

HOUSE CLEARANCE

If there is that hidden 'find', it will be to your direct benefit.

Every week we take instructions for House Clearance for all of the prominent firms of Solicitors in the area, as well as from Private Individuals, Trustees and Executors.

If you are dealing with the content of a property, please contact us at the earliest point.

A visit to the premises by one of our qualified and experienced appraisal staff will offer the best advice for Security, Valuation and Sale.

DISPOSE OF NOTHING

Often things thought to be rubbish are saleable.

IMMEDIATE ACTION IS REQUIRED

Once a property is uninhabited it is a target for burglars and your insurance may be invalid.

Items removed from premises are listed and handled by our professional carriers. Goods are then allocated to the next appropriate sale to ensure the highest sale return.

We will also deal with the rubbish. It is disposed of in the most cost-effective and environmentally friendly way.



PROPERTIES CLEARED, PROMPTLY AND EFFICIENTLY

Call: Richard Plant MNAVA - 01778 422686
For Bourne, Stamford and Southern Counties

Call: Craig Bewick BA (Hons) FNAVA - 01476 565118
For Grantham Area and The Midlands

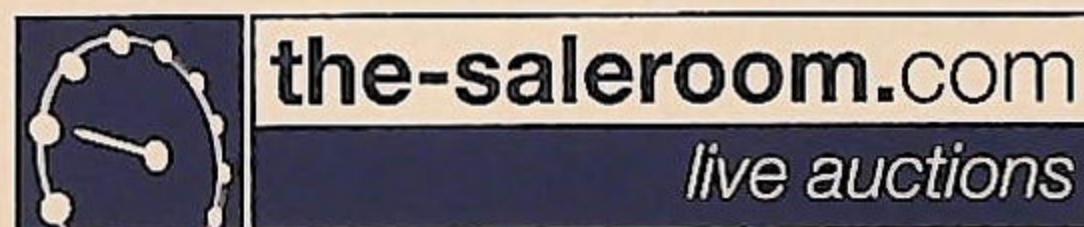
Call: John Leatt ASFAV - 01522 524984
For Lincoln Area and Northern Counties

Art Auction

Wednesday 27th January 7pm
The Lincoln Auction Rooms

Viewing: Sunday 24th January 2pm-5pm
Tuesday 26th January 10am-4pm
Saleday from 2pm.

Bid online or simply watch the sale live at



All enquiries to William Gregory MRICS on 01522 524984

Front cover image: Lot 8 **Sir Joshua Reynolds (1723-1792)**. Portrait of Sir Patrick Blake, full length, oil on canvas, re-lined, 237cm x 147cm. All enquiries to Colin Young MRICS

► 1.

Constable.

Landscape with cattle and church, oil on canvas, 92cm x 72cm.

Provenance: The Great House Collection, Kegworth and labeled verso The Bingham Collection:

Title: A Shady Corner with Cattle - Ser. No 71 - Remarks: From Rushbrook Hall, Suffolk.



▲ 15.

William Anslow Thornley (act. 1858-1898)

Low Tide, Margate; Moonrise Ramsgate, Oil on panel - pair, Signed and titled verso, 20cm x 30cm

£1500-2000

INFORMATION FOR BUYERS

1. **Introduction:** The following informative notes are intended to assist Buyers, particularly those inexperienced or new to our salerooms. All sales are conducted on our printed 'Conditions of sale' which are readily available for inspection and normally accompany catalogues. Our staff will be happy to help you if there is anything you do not fully understand.
2. **Agency:** As auctioneers we usually contract as agents for the seller whose identity, for reasons of confidentiality, is not normally disclosed. Accordingly, if you buy your primary contract is with the seller.
3. **Estimates:** Estimates are designed to help buyers gauge what sort of sum might be involved for the purchase of a particular lot. The lower estimate may represent the reserve price and certainly will not be below it. Estimates do not include the buyer's premium or VAT (where chargeable). Estimates are prepared some time before the sale and may be altered by announcement before the sale. They are in no sense definitive and are subject to constant revision.
4. **Buyers premium:** The 'Conditions of sale' oblige buyers to pay a buyer's premium at 17.5% on the hammer price of each lot purchased with a minimum of £1 per lot. In the case of lots purchased 'Live On-line' or via www.the-saleroom.com or www.i-bidder.com this will be charged at 22.5% on the hammer price. In addition, VAT is payable on this premium (see below).
5. **VAT:** An asterisk (*) indicates that VAT is payable by the purchaser at the standard rate imposed by current UK law on the hammer price as well as being an element in the buyer's premium, lots are noted in the saleroom by a red dot on the lot number. This imposition of VAT is likely to be because the seller is registered for VAT within the European Union and is not operating the Dealers Margin Scheme or because VAT is due on importation into the UK. The double symbol (**) indicates that the lot has been imported from outside the European Union and the present position is that these lots are liable to a reduced rate of VAT on the gross lot price (i.e. both the hammer price and the buyer's premium). Lots which appear without either of the above symbols indicate that no VAT is payable on the hammer price. This is because such lots are sold using the Auctioneers' Margin Scheme and it should be noted that the VAT included within the premium is not recoverable as input tax. (VAT rates are changing with frequency, please check with HMRC. VAT will be charged as set by Government at the time of sale.)
6. **Condition and description of lots.** We are primarily, agents for the seller. We are dependent on information provided by the seller and whilst we may inspect lots and act reasonably in taking a general view about them we are normally unable to carry out a detailed or any examination of lots in order to ascertain their condition in the way in which it would be wise for a buyer to do. Intending buyers have ample opportunity for inspection of goods and, therefore, accept responsibility for inspecting and investigating lots in which they may be interested. Please note carefully the exclusion of liability for the condition of lots contained in the 'Conditions of sale'. Neither the seller nor we, as the auctioneers, accept any responsibility for their condition. In particular, mechanical objects of any age are not guaranteed to be in working order. However, in so far as we have examined the goods and make a representation about their condition, we shall be liable for any defect which that examination ought to have revealed to the auctioneer but which would not have been revealed to the buyer had the buyer examined the goods. Additionally, in specified circumstances lots misdescribed because they are 'deliberate forgeries' may be returned and repayment made. There is a 21 day time limit from the date of sale, not date of collection or receipt. (The expression 'deliberate forgery' is defined in our 'Conditions of sale').
7. **Electrical goods:** Items are tested by a qualified electrician for SAFETY ONLY. An item that passes the PAT safety test may not work. Conversely, an item that fails the test may work with just minor repair. 'Working Order' and 'Safe' are two completely different concepts. The only thing you may take for granted is that the item will be safe at the point of sale. Items that have failed will have their cabling cut to source, labelled and sold 'For Trade Only'. To use the object you will have to change it radically from what was sold to you. Therefore, the Auctioneers cannot be held responsible after the point of sale. Those items sold genuinely as 'antiques or collectables' will not have been tested and if bought for use must be checked over for compliance with safety regulations by a qualified electrician before use. This is an express condition.
8. **Export of goods:** Buyers intending to export goods should ascertain (a) whether an export licence is required and (b) whether there is any specific prohibition on importing goods of that character because, e.g. they may contain prohibited materials such as ivory. Ask us if you need help
9. **Bidding in person:** Some form of identification with proof of address will be required if you are unknown to us. Bidders may be required to register before the sale commences and lots will be invoiced to the name and address on the registration form. Account transfers will not be recognised or facilitated under any circumstances.
10. **Absentee bidding:** Commission bids may be left with the auctioneers indicating the maximum amount to be bid excluding buyers' premium. They will be executed as cheaply as possible having regard to the reserve (if any) and competing bids. If two buyers submit identical commission bids, the auctioneers may prefer the first bid received. If there are genuine reasons why you are unable to leave a Commission Bid and you wish to bid by telephone we may accommodate on lots where your opening bid will be £500 or above. There are inherent dangers with this practice; therefore all arrangements shall be entirely at the bidder's risk. Absentee bid instructions must be received by telephone, fax or email 12 hours prior to the sale.
11. **Live Internet Banking:** In completing the bidder registration on www.the-saleroom.com and providing your credit card details and unless alternative arrangements are agreed with Golding Young Limited, you
 - (i) authorise Golding Young Limited, if they so wish, to charge the credit card given in part or full payment, including all fees, for items successfully purchased in the sale via www.the-saleroom.com or www.i-bidder.com, and
 - (ii) confirm that you are authorised to provide these credit card details to Golding Young Limited through www.the-saleroom.com or www.i-bidder.com.
12. **Methods of payment:** Accounts are due for settlement SALEDAY. The following methods of payment are acceptable. There will be NO EXCEPTIONS to this policy. To avoid undue embarrassment for yourself or our staff, please do not ask for preferential treatment.
 - i. **Cash.** Single payments up to £10,000 only.
 - ii. **Debit Card.** No limit with chip & pin. (CNP limit £500).
 - iii. **Credit Card.** (Fee of 2%+vat) No limit with chip & pin. (CNP limit £500).
 - iv. **Bank Drafts & Building Society Cheques.** No limit. Due to forgeries, we will retain the goods for 3 working days to establish clearance of funds.
 - v. **Cheques.** Accepted up to the limit of the guarantee card for immediate clearance. For sums exceeding this, and you are not known to the auctioneers, we will retain the goods for 7 working days to establish clearance of funds.
 - vi. **Bank Transfer.** Please see details on our website.
13. **Collection and storage:** Goods can be collected as soon as they are paid for and within two working days following the sale. If goods remain with us and we have no contrary written advice of your intentions the items will be moved to storage and reasonable labour charges levied and storage at the rate of £2+vat per lot per day thereafter for small items and £10+vat per lot per day for furniture and large items.
14. **Postage and packing:** Options for buyers are available at www.goldingyoung.com/buying-shipping or ask a member of staff.

Lots subject to normal VAT rules are marked in the text-only catalogue with a single asterisk character (*) or a single dagger symbol (†) to indicate a VAT added rate of 20%.

Lots subject to normal VAT rules are marked in the text-only catalogue with a single 'at' character (@) to indicate a VAT inclusive rate of 20%.

Lots subject to normal VAT rules are marked in the text-only catalogue with double asterisk characters (**) or a double dagger symbol (‡) to indicate a VAT added rate of 5%.

Lots subject to normal VAT rules are marked in the text-only catalogue with double 'at' characters (@@) to indicate a VAT inclusive rate of 5%.

Lots marked in the text-only catalogue with a bullet character (•) are subject to the Artist's Resale Right Scheme.

Paintings, Drawings & Sculpture

Any statement as to authorship, attribution, origin, date, age, provenance and condition is a statement or opinion and is not to be taken as a statement or representation of fact. Golding Young & Mawer reserve the right, in forming their opinion, to consult and rely upon any expert or authority considered by them to be reliable.

A picture catalogued with the forename(s) and surname of the painter is in our opinion a work by that artist; e.g. Joseph Mallord William Turner. When an artist's forename(s) is not known, a series of asterisks followed by the surname of the artist, whether preceded by an initial or not, indicates that in our opinion the work is by the artist.

1. **Attributed to....** is in our opinion probably by the artist.
2. **Studio of....** is in our opinion a work from the studio of the artist which may or may not have been executed under his direction.
3. **Circle of....** is in our opinion a work of the period of the artist executed under his immediate influence.
4. **Follower of....** is in our opinion a work by a painter working in the artist's style, contemporary or nearly contemporary, but not necessarily his pupil.
5. **Manner of....** is in our opinion a work in a style related to that of the artist, but of a later date.
6. **School....** is in our opinion the picture was executed at that time and in that location.
7. **After....** is in our opinion a copy of any date after a work by that artist.
8. The term **signed** and/or **dated** and/or **inscribed** means that in our opinion the signature and/or date and/or inscription are from the hand of the artist.
9. The term **Bears signature** and/or **dated** and/or **inscription** means that in our opinion the artist's name and/or date and/or inscription have been added by another hand.
10. All references to signatures, inscriptions and dates refer to the present state of the work.
11. Dimensions are given height before width.

Artist's Resale Right Scheme (Droit de Suite)

Following the UK's implementation of the EU Artist's Resale Right directive in February 2006, living artists are entitled to receive a resale royalty each time their art work is sold in the UK by an art market professional, subject to certain conditions. In January 2014 this has been extended to the sale of works of art of artists who have died in the previous 70 years, despite the wishes of the British Art Market Federation and other professional bodies. This payment is calculated on qualifying works of art which are sold for a hammer price or best bid price of more than EUR 1000. The UK sterling equivalent of EU 1000 will fluctuate in line with prevailing exchange rates.

The actual qualifying threshold will be calculated by the Artist's Resale Right Service Hub based on the European Central Bank reference rate published at 2.15pm on the day of the sale.

The royalty charge will apply if the hammer price is more than the UK sterling equivalent of EUR 1000. The royalty charge will be added to buyer invoices and must be paid before items can be cleared. No handling costs or additional fees with respect to these charges are retained by auctioneers despite us having to undertake all of the extra and considerable administration work. This sum is then paid by us to a 'not-for-profit' collecting society, who will actually extract their administration fees. Any residual amount may go to benefit the artist.

Portion of the hammer price (Euro's EUR)	Royalty rate
1000 to 50,000	4%
50,000.01 to 200,000	3%
200,000.01 to 350,000	1%
350,000.01 to 500,000	0.5%
Exceeding 500,000	0.25%

VAT is not payable on this royalty charge. A maximum royalty charge is 12,500 EUR. Revised 4th January 2011.



◀ **17thC English School.**
Dudley Earl of Leicester, oil
on oak panel, titled,
46cm x 36.5cm.
Sold for £18,000

Lincoln Fine Art Sale



- ▲ 1.
Constable.
Landscape with cattle and church, oil on canvas, 92cm x 72cm.
Provenance: The Great House Collection, Kegworth and labeled verso The Bingham Collection;
Title: A Shady Corner with Cattle - Ser. No 71 - Remarks: From Rushbrook Hall, Suffolk.
Link of interest:
www.tate.org.uk/art/artworks/constable-summer-afternoon-after-a-shower-n01815/text-catalogue-entry



- ▲ 2.
Percy Robert Craft
(1856-1934)
Fruit Shops and Dogs, Damascus, Oil on board
Signed and titled verso
28cm x 37.5cm
£400-600



- ▲ 3.
Lawrence James Isherwood
(1917-1988)
Nude study, Oil on board,
Signed, 34cm x 44.5cm
£300-500



- ▲ 4.
Ernest Charles Walbourn
(1872-1927)
The Ferry Boat, Oil on Canvas,
Signed, 49cm x 75cm
Provenance: Burlington Gallery, Sheffield, April 1914, £15
£500-800



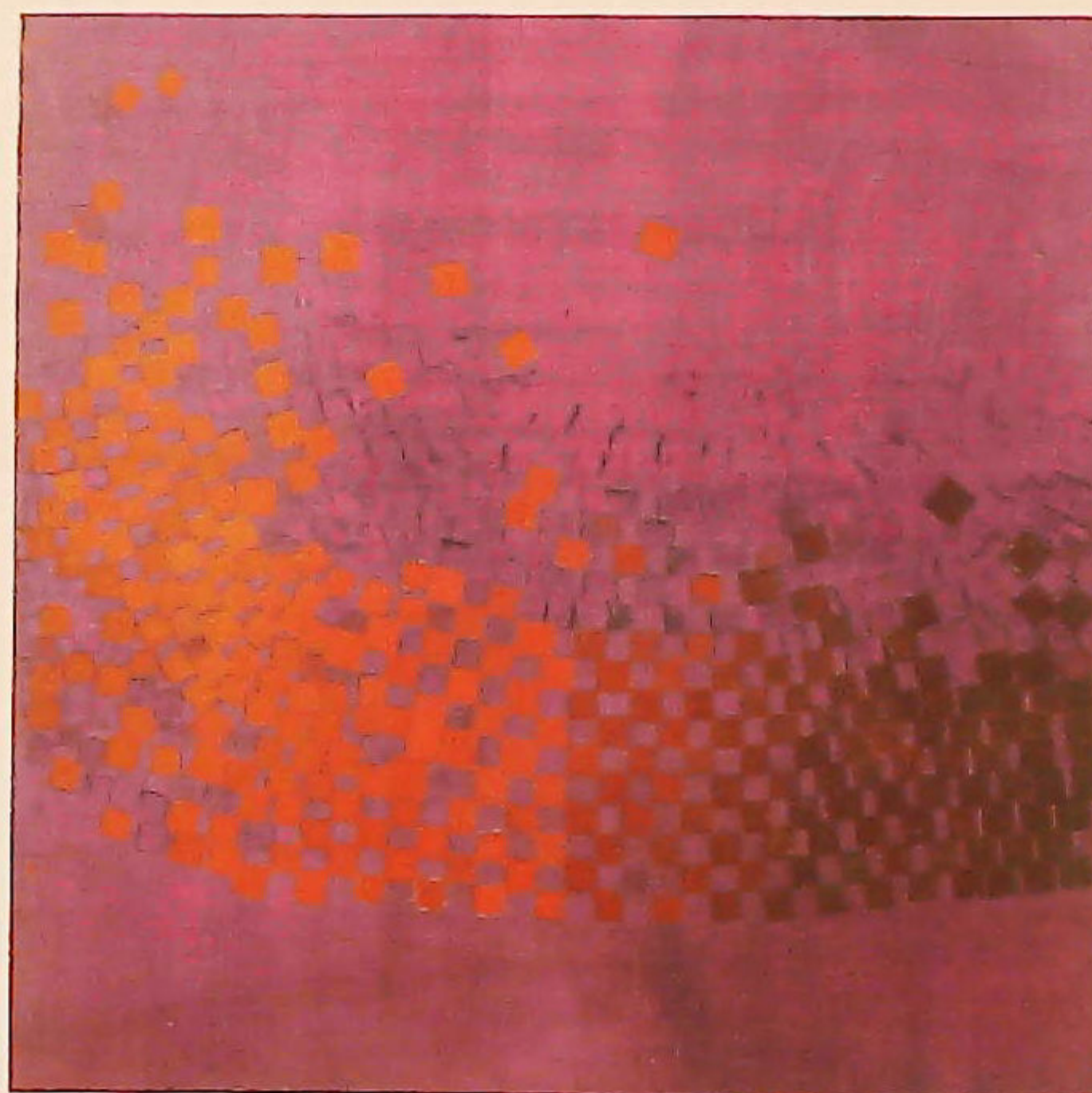
- ▲ 6.
19thC British School
Portrait of a lady, Oil on canvas, 75cm x 62cm
£300-500



- ▲ 7.
Paul Milner (b.1963)
Making Friends, Oil on canvas laid on board, Signed and titled verso, 27cm x 22cm
Provenance: Spencer Coleman Gallery
£150-250



- ▲ 8.
Sir Joshua Reynolds
(1723-1792).
Portrait of Sir Patrick Blake, full length, oil on canvas, re-lined, 237cm x 147cm.
Provenance: The Great House Collection, Kegworth.
Auctioneers Notes:
This painting is listed as no.188a in the Reynolds catalogue raisonné by David Mannings (Yale, 2000).
With much of Reynolds' oeuvre it can be difficult to draw a line between autograph and studio works.
Mannings denotes the portrait a 'copy (?)' of the Fisher Art Gallery, LA, version.
The question mark is a most telling punctuation in that academics have previously expressed doubts about whether the Fisher picture is indeed the original. There is no published estimate on this lot as it will be for the buyer to decide whether it is indeed an autograph or studio work and make their bid accordingly.
All enquiries to Colin Young MRICS



- ▲ 5.
Wilhelmina Barns-Graham (1912-2004)
Whirlwind - Vermillion in Purple, Oil on board, Signed and dated 1968 and titled verso, 35.5cm x 35.5cm
£2000-3000



▲ 9.
Everett Watson Mellor
(1878-1965)
On the Tees, Yorkshire, Oil on board, Signed, 24cm x 34cm
£400-600



▲ 12.
Joseph Vincent Gibson
(c. 1860-1890)
Raising the Wind, Oil on board, Signed, titled and dated 1895 verso, 24.5cm x 29.5cm
With auction sales receipt - Eadon Sheffield, 1916, £8 18 shillings
£200-300



▲ 15.
William Anslow Thornley
(act. 1858-1898)
Low Tide, Margate; Moonrise Ramsgate, Oil on panel - pair, Signed and titled verso, 20cm x 30cm
£1500-2000



▲ 18.
Patrick Branwell Bronte
(1817-1848)
Woodland waterfall with seated figure, Oil, signed, 28cm x 22cm
£800-1200



▲ 10.
Everett Watson Mellor
(1878-1965)
Thornton Foss Ingleton, Oil on board, Signed, 24cm x 34cm
£400-600



▲ 13.
19thC Continental School
Tavern scene - Proposal Oil on canvas, 36cm x 28.5cm
£600-800



▲ 16.
John Moore of Ipswich
(1820-1902)
East Anglian coastal scene, Oil on canvas, 24.5cm x 40cm
£400-600



▲ 19.
Alfred H. Vickers
(1853-1907)
Rural landscape, Oil on canvas, Signed, 19cm x 29cm
£100-200



▲ 11.
Henry Hadfield Cubley
(1858-1934)
Changing Pastures - near Fort William, Oil on canvas, Signed, titled verso, dated 1885, 60cm x 90cm
£300-500



▲ 14.
Charles L. Shaw
(act. 1880-1898)
River landscape with fisherman, Oil on canvas, Signed and dated (18)96, 29cm x 44cm
£150-250



▲ 17.
19thC British School
Thatched cottage with figures Oil on board, 18cm x 29cm
£200-300



▲ 20.
Robert Mills (1769-1844)
View of Stirling Castle, Watercolour, Signed and dated 1827, 58.5cm x 84cm
£200-400



▲ 21.
Edward Robert Smyth
(1810-1899)
Landscape with house - woman and child and a donkey, Oil on canvas, Signed, 60cm x 90cm
£600-900

Lincoln Fine Art Sale



▲ 22.
19thC English school.
Figures by a lake, oil on panel,
28cm x 30cm
£150-250



▲ 23.
Jean Treyer (19thC)
Coastal View, near Cannes, Oil
on board, Signed,
25.5cm x 34cm
*Label verso - Sotheby's
Newmarket*
£200-300



▲ 24.
**Thomas Edwin Mostyn
(1864-1930)**
River landscape, Oil on
canvas, Signed,
29.5cm x 39.5cm
£300-500



▲ 25.
**W. Richards
(19thC)**
Glen Sheil Ross, Oil on canvas,
Signed and titled verso,
29cm x 49.5cm
£100-200



▲ 26.
**Alfred H. Vickers
(1853-1907)**
Coastal landscape with
sailing ships and figures, Oil
on canvas, Signed and dated
1889, 25cm x 48cm
£150-250



▲ 27.
**W.T. Brookes
(19th/20thC)**
River scene, Watercolour,
Signed and dated 1899,
28cm x 18cm
£40-60



▲ 28.
**Alfred Vickers
(1786-1868)**
River landscape with fishing
smacks and cattle, Oil on
board, Signed and dated 1862
19.5cm x 29.5cm
£200-300



▲ 29.
**Alfred Vickers
(1786-1868)**
Country landscape with farm
buildings and figures, Oil on
board, Signed and dated,
19cm x 29cm
£150-250



▲ 30.
**William Bidwell Henley
(19thC)**
Mountain river scene,
Watercolour, Signed,
26.5cm x 44cm
£50-100



▲ 31.
**William Leighton Leitch
(1804-1883)**
River landscape with castle
and mountains, Watercolour,
Signed, 16cm x 25cm
£150-250



▲ 32.
**C. Whaplinton
(19thC)**
In the Cornfield, Oil on
canvas, Signed and dated
1876, 29.5cm x 52cm
£50-100



▲ 33.
**M. Jackson
(19th/20thC)**
Castle at Waters Edge, Oil
on canvas - pair, Signed and
dated 1903, 39.5cm x 60cm
£100-150



▲ 34.
19thC British School
An Old Pennie Water Mill,
Watercolour, 28.5cm x 48.5cm
£40-60



▲ 35.
19thC English school
Figures by a lake, oil on panel,
28cm x 30cm
£200-300



▲ 36.
Manner of Thomas Sidney Cooper
Cattle resting in rural landscape, Watercolour, 26.5cm x 36.5cm
£50-150



▲ 39.
19thC British School
Spaniel with Woodcock, Oil on canvas, 64.5cm x 43cm
£50-100



▲ 37.
19thC British School
Church landscape with cattle
Oil on canvas, 44.5cm x 65cm
£40-60



▲ 40.
19thC British School
Terrier with Game, Oil on canvas, 43.5cm x 79cm
£50-100



▲ 38.
Van Helda (?) (19th/20thC)
Woodland path, Oil on canvas, Indistinctly signed and dated 1917, 54.5cm x 39.5cm
£40-60



▲ 41.
19thC British School
Spaniel with Cock Pheasant
Oil on canvas, 64cm x 44cm
£50-100



▲ 42.
19thC British School
Fishing vessel in harbour
Watercolour, 27cm x 44cm
£30-50



▲ 43.
19thC British School
Coastal landscape with figures, church landscape, Oil on board - pair, 22cm x 26.5cm
£50-80



▲ 44.
19th/20thC British School
Fruit still life, Oil on canvas - pair, 19.5cm x 30cm
£50-100



▲ 45.
19thC British School
Horse and cart in rural landscape, Watercolour, 35.5cm x 45.5cm
£30-50



▲ 46.
19thC British School
Horse and cart in mountain landscape, Watercolour, 27cm x 40cm
£30-50



▲ 47.
M.F. Thomas (19thC)
Rural landscape with cattle, Watercolour, Signed and dated 1878, 38cm x 55cm
£50-80



▲ 48.
J. Nash (19thC)
Fete Champetre, Watercolour, Signed and dated 1860, 22.5cm x 41cm
£30-50

Lincoln Fine Art Sale



▲ 49.
19thC British School
Coastal scene, Watercolour,
signed J. Varley, 20cm x 28.5cm
and another, titled Carnarvon
Castle
£100-150



▲ 52.
19thC British School
Fisherman on the River Bank,
Watercolour, 20cm x 29.5cm
and two others (3)
£50-80



▲ 55.
19thC Continental School
Figures and horses in rural
track, Watercolour, Signed
Charles Felix Deshayes (?) and
dated 1869, 20.5cm x 28.5cm,
and another, landscape and
ruins
£50-80



▲ 58.
19thC Continental School
Coastal scene with figures,
Watercolour, 17.5cm x 27cm
and another, Crofters Cottage
(2)
£50-80



▲ 50.
**Alfred H. Vickers
(1853-1907)**
Monument in mountain
landscape, Watercolour,
Signed and dated,
16cm x 23cm
£50-80



▲ 53.
19thC British School
Fishermen on the River Bank
Watercolour, 15.5cm x 22.5cm
and another Continental scene
(2)
£40-60



▲ 56.
19thC School
Farmer to market, Oil on
panel, Signed Alphaeus P.
Cole, dated 1905,
35.5cm x 25.5cm
£50-80



▲ 59.
**Elchanon Leonardus
Vermeer (1826-1900)**
Mother and child, Watercolour
Signed, 14.5cm x 11cm
£200-300



▲ 51.
19thC Continental School
Mountain riverscape,
Watercolour, Indistinctly
signed, 24.5cm x 25.5cm
£30-50



▲ 54.
D. H. McEwan (19thC)
River landscape, Watercolour,
Signed, 19.5cm x 28cm and
another, church scene (2)
£30-50



▲ 57.
19th/20thC British School
Woodland scene, Oil on board,
Signed Hammond, dated 1922,
28cm x 33cm
£50-80



▲ 60.
**A. Pisa
(19th/20thC)**
Venetian canal scene,
Watercolour, Signed
23cm x 15cm
£60-90



▲ 61.
Langham (19thC)
Sailor Boy, Watercolour,
Signed and dated July 12, 1861
33cm x 21cm
£50-80



▲ 62.
**Sarah Louise Kilpack
(1839-1909)**
Stormy Coastal Scene, Oil on
board, Signed, 27cm x 19.5cm
£150-250



▲ 63.
**Henry Sutton Palmer
(1854-1935)**
At Cranmore, Watercolour,
15cm x 23cm
£200-300



▲ 64.
**19th/20thC Continental
School**
Fishing boats by shore,
Watercolour, Indistinctly
signed, 27.5cm x 38cm
£50-80



▲ 65.
**Benjamin Davis
(19th/20thC)**
On the Trossachs Road West
of Callander, Oil on canvas,
Signed, dated 1919 and titled
verso, 45cm x 60cm
£100-200



▲ 66.
**Charles Edward Wilson
(1854-1941)**
Shelling Peas, Watercolour,
Signed, 21cm x 15cm
*Provenance - W. H. and J. A
Eadon Auctioneers, Sheffield
1915, Lot 583*
£300-500



▲ 67.
**Charles Edward Wilson
(1854-1941)**
Breakfast, Watercolour, Signed,
21cm x 15cm
*Provenance - W. H. and J. A
Eadon Auctioneers, Sheffield
1915, lot 584*
£300-500



▲ 68.
19thC British School
Terriers and fox, Watercolour,
Monogrammed,
13cm x 17.5cm
£150-250



▲ 69.
**Jean-Baptiste Grenze
(1725-1805)**
Bacchante, Watercolour,
43cm x 35cm
£200-300



▲ 70.
**Ralph William Bardill
(1876-1935).**
Farmyard scene, watercolour,
signed
£200-300

Lincoln Fine Art Sale



▲ 71.
William Mark Fisher
(1841-1923).
Autumn, watercolour,
initialled and dated,
22.5cm x 33cm
£250-300



▲ 74.
J. H. Allemand
(19thC)
Coastal and harbour scenes,
Oil on board - a pair, Signed,
9.5cm x 13.5cm
£50-150



▲ 77.
T. Walsh
(19th/20thC)
Huntsman and horse
Watercolour, Signed,
13.5cm x 18.5cm
£50-80



▲ 80.
19thC British School
River and country landscapes
oil on board - pair,
monogrammed and dated
1882, 23cm x 37.5cm
£50-100



▲ 72.
Frederick William Scarborough (1860-1939)
Fishing boats and figures in
harbour, Watercolour, Signed
34cm x 24cm
£80-120



▲ 75.
Willem Cornelis Rip
(1856-1922)
Dutch harbour scene, Oil on
canvas, Signed and inscribed
verso, 38.5cm x 69cm
£300-500



▲ 78.
19thC English School
River landscape with
waterfall, Oil on panel
17cm x 21.5cm
£150-250



▲ 81.
After Joseph Mallord William Turner
The Grand Canal, Venice, Oil
on canvas, 52.5cm x 78.5cm
£300-500



▲ 73.
John H. Tyson
(Act. 1886-1905)
Evening in Wilford village,
Warwickshire, Watercolour
Signed and titled verso
20cm x 30cm
£60-90



▲ 76.
Pine (18th/19thC)
Extensive landscape and
riverscapes, Watercolour - pair,
Signed, 29.5cm x 44.5cm
£100-200



▲ 79.
19thC English School
Mountain landscape with
cottages and figures, Oil on
board, 17cm x 22cm
£150-250



▲ 82.
19thC Continental School
Old gentleman smoking a
pipe, Oil on canvas,
49cm x 39cm
£80-120



▲ 83.
Manner of Sir Matthew Smith (1879-1959).
Flowers in a pot and on a table, oil on canvas, 38.5cm x 49cm, label verso Lincoln Fine Art - The Strait June 1998
£80-120



▲ 86.
19thC English School
Fortune Teller, Oil on panel, 23.5cm x 18.5cm
£100-200



▲ 89.
After Myles Birket Foster
Going to Church, Watercolour, Signed, 13cm x 10cm
£40-60



▲ 92.
18th/19thC Dutch School
Windmill in landscape, Oil on board, 25.5cm x 35.5cm
£50-80



▲ 84.
19th/20thC British School
Portrait of a dog, Oil on board, 28.5cm x 24.5cm
£60-90



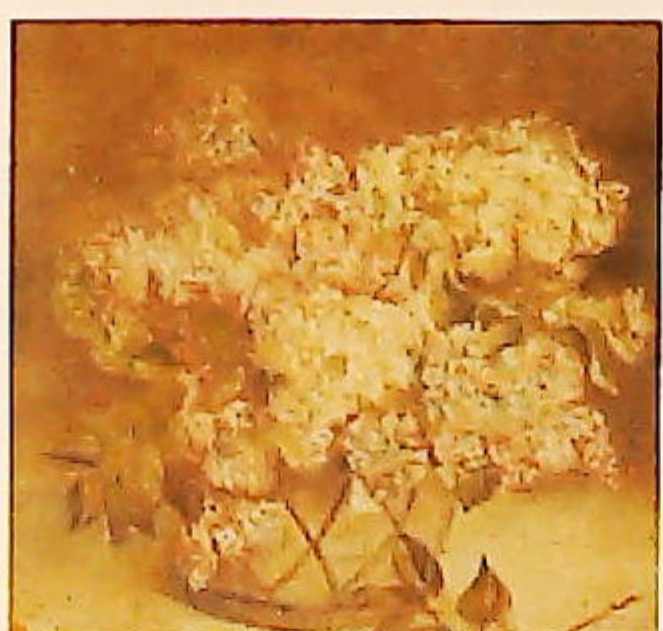
▲ 87.
19thC British School.
Parkland entrance, pencil drawing, 24cm x 31cm
£100-150



▲ 90.
19thC British School
Over the Wooden Fence, Watercolour, 12.5cm x 17.5cm
£40-60



▲ 85.
William Edward James Dean (?-1956)
Mastership and trawler in rough seas, Oil on board, Signed and dated 1908, 28.5cm x 43.5cm
£500-800



▲ 88.
19thC British School
Farmyard with chickens Oil on canvas, 22cm x 36.5cm and another, floral still life
£50-80



▲ 91.
19thC Dutch School
Street scene with figures, Oil on canvas, 46cm x 33cm
£100-200



▲ 93.
C.W.S. (19thC)
St Peter, Oil on board, Monogrammed, 40cm x 14cm
£180-220

Lincoln Fine Art Sale



▲ 94.
John Keely (1849-1930)
Rural landscape with castle,
Watercolour, Signed
17.5cm x 25cm
£40-60



▲ 97.
Richard Sebastian Bond (1808-1886)
Marine Barges at Caenarvon
Castle, Oil on canvas, Signed
and dated 1881, 59cm x 90cm,
Label verso E. Stacey Marks
Ltd Eastbourne
£250-350



▲ 98.
19thC British School
Half length portrait of a
woman, Oil on canvas,
72.5cm x 60.5cm
£200-400



▲ 100.
Mrs Richard Hardy (19thC)
Bennet Rowthes Langton, oil
on canvas, signed verso and
dated 1888, 89.5cm x 74.5cm
£250-400



▲ 95.
Arthur William Redgate (1860-1906)
Rural landscape with river and
bridge, Oil on board, 15cm x
23cm
£50-80



▲ 99.
19thC British School
Half length portrait, Mary
Thomas Poynton, born 17
March 1805 at Stoke near
Plymouth, Devonshire, died
8 June 1834 - daughter of
Captain Poynton. Married
George Jessop, 6th youngest
son of William Jessop of
Newark-on-Trent, Butterly
Hall, Derbyshire, Oil on
canvas, 85cm x 72cm
£200-400



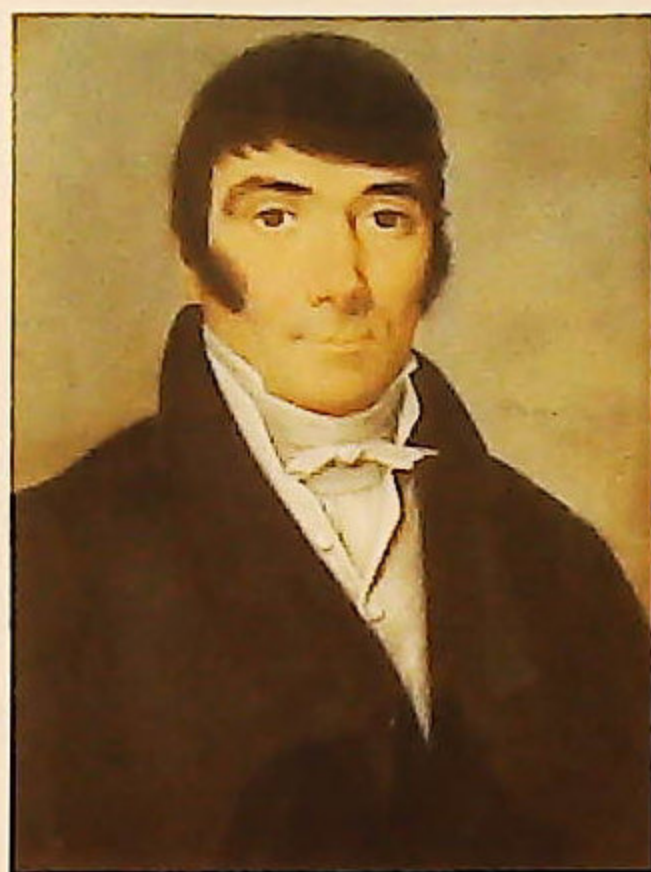
▲ 101.
Emily J. Harding (Mrs E.W. Andrews)
19th/20thC
Portrait of young woman, Oil
on canvas, Signed and dated
1877 verso, 59cm x 47.5cm
£200-300



▲ 96.
Arthur Hughes (1832-1915).
Near St. Ives, oil on board, signed and titled verso, 19.5cm x 31.5cm
*Provenance: Christie's 1921 Lot 42, Mrs Katherine Maxse, catalogue
raisonne number 258.*
£500-800



▲ 102.
Emily J. Harding
(Mrs E.W. Andrews)
(19th/20thC)
Portrait of a young, Oil on
canvas, Signed and dated 1877
verso, 59cm x 49cm
£200-300



▲ 104.
Nicholas Dragne
(18th/19thC)
Half length portraits - husband
and wife, Pastel, Signed and
dated 1824
£200-400



▲ 106.
19thC British School
Portrait of a maiden seated,
Watercolour with highlight,
59cm x 46cm
£50-80



▲ 108.
19th/20thC India School
Balaji Pandil Rana; Oil on
canvas, Indistinctly titled
verso, 27cm x 21cm
£200-400



▲ 103.
English School
Portrait Lilia Colquhoun,
eldest daughter of Sir John
Colquhoun, Oil on canvas,
Titled label verso, 66cm x
60.5cm
Label verso - Christies
£100-200



▲ 105.
19thC British School
Portrait - Sarah Dickenson
Pearson, Mother of 1st Lord
Cowdray, Oil on canvas,
Titled and dated verso -
Brickendonbury 1903,
90cm x 69cm
£100-200



▲ 107.
Adolf Theer (1811-1868)
Portrait of a young woman
in garden scene, Watercolour,
Signed, 26cm x 20cm
£300-400



▲ 109.
19thC Continental School.
Study of a young maiden
holding flowers, watercolour,
28cm x 24cm
£200-300

Lincoln Fine Art Sale



▲ 110.
William Busk
(19th/20thC).
The Primrose Seller, oil on
canvas, signed,
69.5cm x 57.5cm
£600-800



▲ 111.
Graham Williams
(1895-1950)
Mountain River - landscape,
Oil on canvas, Signed,
49cm x 75cm
£100-200



▲ 112.
Harden Sidney Melville
(act. 1837-1881)
Horses and Timber Wagon, Oil
on canvas, Signed,
49cm x 75cm
£150-250



▲ 113.
A Vermeillet (19th/20thC)
River landscape, Oil on panel,
Signed and dated (18)81,
36.5 x 65.5cm
£50-150



▲ 114.
Evert Pieters (1856-1932)
Beach scene with fisherman,
Oil on canvas, Signed,
49cm x 39.5cm
£400-600



▲ 115.
Valentine Davis
(1854-1930)
River scene, Oil on board,
Signed, 21cm x 30cm
£100-200



▲ 116.
George Pontin
(19th/20thC)
The Mill on the Aran, Oil
on canvas, Signed and titled
verso, 44cm x 61cm
£200-300



▲ 117.
Donald Greig (1916-2009)
Artist in Country Courtyard,
Oil on canvas, Signed,
49cm x 59.5cm
£150-250



▲ 118.
Geoffrey H. Pooley
(1908-?)
Mountain river landscape,
Oil on canvas, Signed,
55cm x 75cm
£100-200



▲ 119.
Frank Holmes (b.1935)
Moorland scene, Gouache,
Signed, 27cm x 43.5cm
£50-80



▲ 120.
Frank Holmes (b.1935)
Moorland scene, Gouache,
Signed, 27cm x 43.5cm
£50-80



▲ 121.
Raoul Millias (1901-1999)
Lake scene and country house,
Oil on canvas, Signed,
71cm x 91cm
£150-250



▲ 122.
Tom Anderton
(19thC)
Rural landscape with figures,
Watercolour, Signed,
25cm x 34.5cm
£40-60



▲ 123.
Piotr Fomin (b.1919)
Coastal scene, Oil on canvas,
Signed and titled verso,
51cm x 72cm
£50-100



▲ 126.
Robert Thompson Lambert (20thC)
Garden scenes, Oil on board -
pair, Signed, 49cm x 72cm
£80-120



▲ 129.
Jacob Meyer (1895-1971).
Rural scene with cart and
figures, oil on canvas, signed
65.5cm x 59.5cm
£200-400



▲ 132.
20thC Continental School.
Winter landscape, Oil on
canvas, Indistinctly signed and
titled, 69.5cm x 99cm
£50-150



▲ 124.
Constance Marjorie Mortimer Green
The House Opposite, Oil on
canvas, Signed and titled
verso, 55cm x 39.5cm, Also,
landscape signed Anthony
Daniell, and another
M.McColm (3)
£40-60



▲ 127.
Peder Jacob Marius Knudsen (1868-1944)
Floral still life, Oil on canvas,
Signed, 74cm x 69cm
£200-400



▲ 130.
Einar Thorbjorn (1911-1985).
Greenland, oil on canvas,
signed, titled and dated
19-3-50, 46cm x 67cm
£250-350



▲ 133.
Carl Wagner (20thC)
Ceylon, Oil on canvas - two,
Signed and titled,
57cm x 47.5cm, 37cm x 47cm
£50-150



▲ 125.
Percy des Carrières Ballace (1899-1970)
Rural landscape, Watercolour,
Signed and dated (19)67,
49cm x 59.5cm
£50-80



▲ 128.
Peder Jacob Marius Knudsen (1868-1944)
Floral still life, Oil on canvas,
Signed, 69cm x 61.5cm
£200-400



▲ 131.
Morgens Ege (1892-1946).
Fishing boats in harbour, Oil
on canvas, Signed,
69cm x 103.5cm
£100-200

Lincoln Fine Art Sale



▲ 134.
Clara L Johnson
(19th/20thC).
River woodland scene,
Watercolour, Signed
22.5cm x 14cm
£50-80



▲ 136.
19thC British School.
Half length portrait of a
gentleman, Oil on board,
22cm x 16cm
£30-50



▲ 139.
Catherine Oules
(1879-1961).
Sent to bed, Oil on canvas laid
on board, Signed and dated
1942, 29.5cm x 22cm
Provenance: Bonhams December
2003
£500-800



▲ 142.
Josef Rolf Knobloch
(1891-1964).
River landscape with village in
the background, Oil on board,
Signed and dated (19)22,
47 x 57.5cm
£100-150



▲ 135.
20thC School.
Two dogs in garden scene
Oil on board, 24.5cm x 19.5cm
£30-50



▲ 137.
R.H. (19th/20thC).
Portrait of a young woman,
Watercolour, Initialled and
dated, 24cm x 20cm
£60-90



▲ 140.
Walter J Hall (1866-1947).
River landscape, coastal scene,
Watercolour - pair, Signed and
dated 1907, 18cm x 29cm
£40-60



▲ 143.
Jenny Blome (20thC).
Winter scene, Oil on canvas,
Signed, 39.5cm x 50cm
£30-50



▲ 138.
Harry Baker (1849-1875)
River landscape, Watercolour,
Signed, 8cm x 17cm
£50-80



▲ 141.
20thC British School.
Watermill scene, Oil on
canvas, 28cm x 44cm
£30-50



▲ 144.
Geoffrey Chatten (b.1938)
Somerleyton Hall Gardens, Oil
on board, Signed,
19.5cm x 24.5cm
£150-200



▲ 145.
John Hamilton Glass
(1820-1885).
Harbour - coastal scene,
Watercolour, Signed,
24.5cm x 34cm
£40-60



▲ 148.
Richard Redfern
(19th/20thC)
Border Castle, Watercolour,
Signed and titled verso,
32.5cm x 50cm
£50-80



▲ 152.
Herbert F. Royle (1870-1958).
Country landscape with figures, oil on canvas, signed, 49.5cm x 60cm
£1200-1500



▲ 149.
Richard Redfern
(19th/20thC)
The Clints of Dromore,
Watercolour, Signed and titled
verso, 35cm x 52cm
£50-80



▲ 146.
Victor Noble Rainbird
(1888-1936)
Master ship off the coast,
Watercolour - pair, Signed,
47.5cm x 62cm
£100-200



▲ 150.
John George Mathieson
(act. 1918-1940)
Loch Tulla, Oil on board,
Signed and titled verso,
22.5cm x 61.5cm
£100-200



▲ 153.
David Bond Walker
(1891-1977).
Landscape path, Oil on
canvas, Signed,
39.5cm x 49.5cm
£50-100



▲ 155.
James K. Makin
(19th/20thC).
Catch it, oil on canvas, signed
and titled verso, 25cm x 18cm
£300-500



▲ 147.
Willem Leendert
Bruckman (1866-1928).
Coastal village with working
horses, Oil on canvas
69.5cm x 89cm
£700-1000



▲ 151.
Arthur Hayward
(1881-1971).
Woodland scene, Oil on board,
Signed, 29.5cm x 34.5cm
£100-200



▲ 154.
C.M. Serres
(19thC).
Mountain river landscape
with figures and cattle, oil on
canvas, signed and dated 1878,
72.5cm x 99cm
£600-800

Lincoln Fine Art Sale



▲ 156.
19thC School.
Head and shoulders portrait,
Watercolour, Monogrammed,
23 x 16.5cm
£40-60



▲ 157.
Ralph Peacock (1868-1946).
Portrait of a young
bridesmaid, Oil on canvas,
68.5cm x 51cm
£300-400



▲ 158.
S. Kleckowski (20thC).
Portrait of Princess Margaret, Pencil and coloured crayon, Signed
and dated 1949, 26.5cm x 17cm, Bears artist label verso, The
Superintendent Buckingham Palace label verso
Certificate of Provenance - Christie's London
£2500-3500



▲ 159.
E. J. Van Strappen
(19th/20thC)
Lichfield, Norfolk,
Watercolour - a pair, Signed
and titled, 27.5 cm x 18.5cm
£50-80



▲ 160.
After Pierre Auguste Cot.
The Storm, Oil on canvas,
92cm x 60.5cm
£150-250



▲ 161.
William Bartol Thomas
(1877-1947).
Boston Stump, Watercolour,
Signed, 35.5cm x 49.5cm
£50-100



▲ 165.
William Bartol Thomas
(1877-1947).
River landscape, Watercolour,
Signed, 25cm x 35.5cm
£50-100



▲ 168.
S. Bullock (20thC).
Lincoln from Heighington, Oil
on board, Signed and titled
verso, 47.5cm x 56.5cm
£30-50



▲ 171.
Robert Ixer (b.1941).
Figures on a rural track with
cathedral in the background,
Oil on canvas, Signed,
49cm x 75cm
£50-80



▲ 162.
William Bartol Thomas
(1877-1947).
Fishing boats at sea,
Watercolour, Signed,
33cm x 49cm
£50-100



▲ 166.
J.T. Burgess 19th/20thC.
Boston harbour, Watercolour,
Signed and dated 1914,
Inscribed after W.B. Thomas
25cm x 35cm
£50-80



▲ 169.
Clive R Browne
(19th/20thC).
Waiting for tide, Boston, Oil
on canvas, Signed and titled
verso, 39cm x 49cm
£50-80



▲ 172.
Robert Ixer (b.1941).
Figure on horse in rural scene,
Oil on canvas, Signed,
70cm x 90cm
£50-80



▲ 163.
William Bartol Thomas
(1877-1947).
Landscape and windmills,
Watercolour, Signed,
34cm x 47cm
£50-100



▲ 167.
Nadia Tzatchev Eadie
(20thC).
Street scene with figure, oil on
board, signed and dated 1947,
37.5cm x 47.5cm
£20-30



▲ 170.
Stuart W. Cowan
(20thC).
Lincoln Cathedral from the
Brayford, Watercolour, Signed,
56cm x 38.5cm and another
signed Gordon Cumming (2)
£30-50



▲ 173.
Robert Ixer (b.1941)
Wagon in country landscape,
Oil on canvas, Signed
49cm x 75cm
£50-80

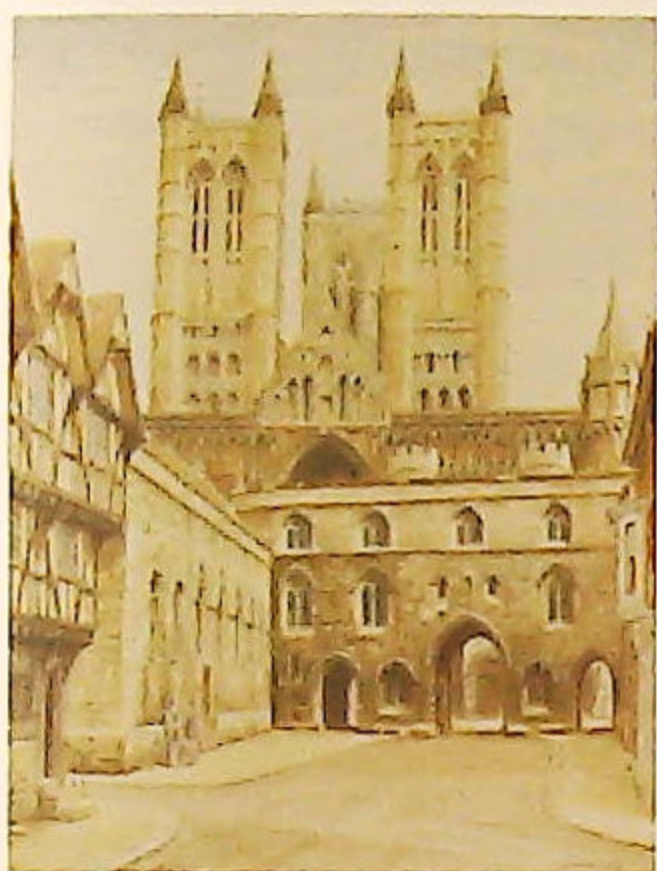


▲ 164.
William Bartol Thomas
(1877-1947).
River landscape, Oil on board,
Signed, 25.5cm x 39cm
£100-150



▲ 174.
Peter Lightfoot (b.1932).
Space City, Oil on board,
Signed, titled and dated 1979
49cm x 101cm
£500-800

Lincoln Fine Art Sale



▲ 175.
H.H. Findley (20thC).
Lincoln Cathedral from Castle
Square, Watercolour, Signed,
37.5cm x 29cm
£30-50



▲ 176.
Douglas Rolf
(20thC).
Steep Hill Lincoln,
Watercolour, Signed and dated
(19)56, 31.5cm x 41cm
£30-50



▲ 177.
Douglas Rolf
(20thC).
Lincoln Cathedral from the
Brayford, Watercolour, Signed
and dated (19)56,
31.5cm x 41cm
£30-50



▲ 178.
Douglas Rolf
(20thC).
James Street Lincoln,
Watercolour, Signed and dated
(19)56, 31.5cm x 41cm
£30-50



▲ 179.
Vincent Haddelsey
(1934-2010).
Winning Breed, folio of artist
signed prints and another (2)



▲ 180.
Vincent Haddelsey
(1934-2010).
Artist signed prints (10)



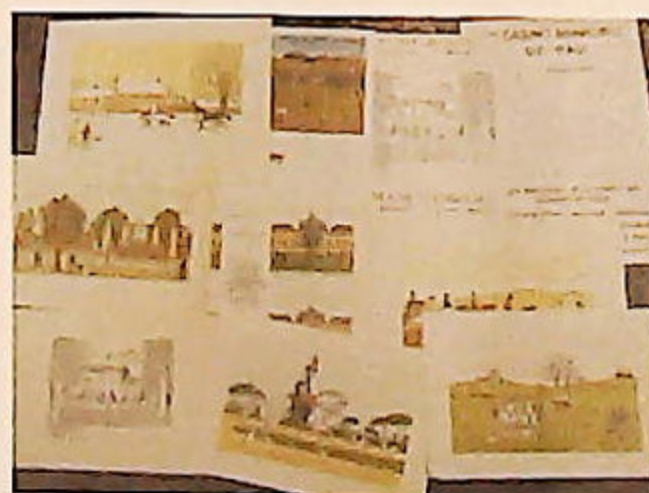
▲ 181.
Vincent Haddelsey
(1934-2010).
Artist signed prints (10)



▲ 182.
Vincent Haddelsey
(1934-2010).
Artist signed prints (10)



▲ 183.
Vincent Haddelsey
(1934-2010).
Artist signed prints (10)



▲ 184.
Vincent Haddelsey
(1934-2010).
Artist signed prints



▲ 185.
Vincent Haddelsey
(1934-2010).
Artist signed prints (10)



▲ 186.
Vincent Haddelsey
(1934-2010).
Artist signed prints (10)



▲ 187.
Vincent Haddelsey
(1934-2010).
Artist signed prints (11)



▲ 188.
Vincent Haddelsey
(1934-2010).
Artist signed prints (10)



▲ 191.
After William Russell Flint.
Summertime, Limited edition coloured print 605/653
40cm x 53cm
£200-300



▲ 195.
Helen Layfield Bradley
(1900-1979).
On a lovely summer's day, Artist signed coloured print, 43cm x 53cm
£50-80



▲ 198.
Henry Wilkinson
(1921-2011).
Spaniel and rabbit, Artist signed limited edition coloured etching 47/200, 27cm x 36cm
£40-60



▲ 189.
Vincent Haddelsey
(1934-2010).
The Hunt, Artist signed, limited edition coloured print 187/200, 37cm x 47.5cm and another (2)
£50-80



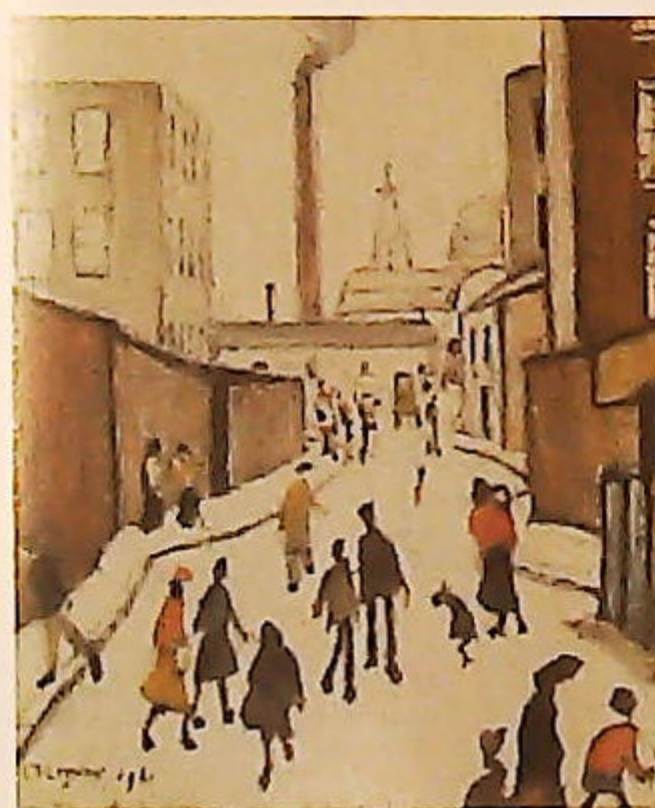
▲ 192.
David Shepherd (b.1931)
After the Rain, Artist signed limited edition print 795/850
28cm x 43cm
£30-50



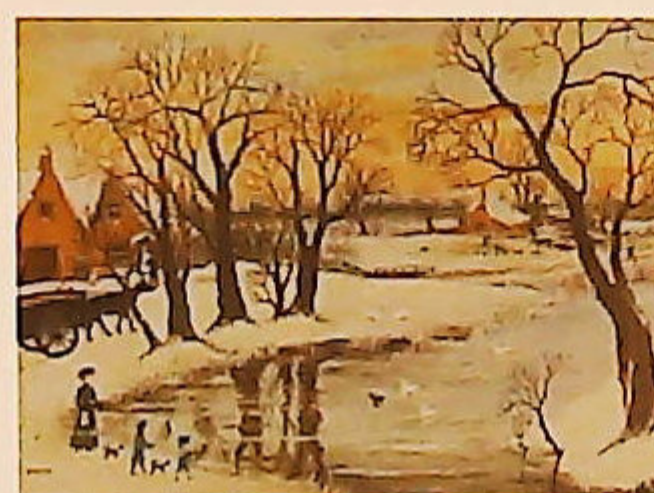
▲ 196.
Helen Layfield Bradley
(1900-1979).
We went to gather holly, Artist signed coloured print, 32cm x 39cm and another - the air is heavy with floating mist (2).
£50-80



▲ 199.
Harold Sayer
(20thC).
Montpelier Rotunda Cheltenham, Artist signed etching, titled and dated 1950, 17.5cm x 21.5cm
£40-60



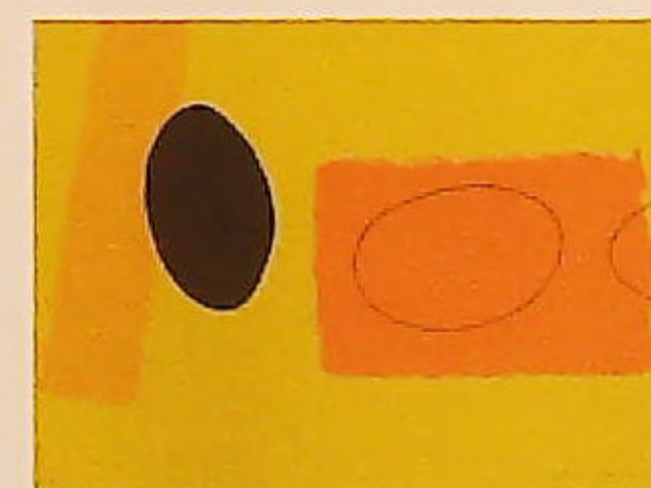
▲ 190.
Laurence Stephen Lowry
(1887-1976).
Street Scene, Artist signed coloured print, 29cm x 22.5cm
£500-800



▲ 193.
Helen Layfield Bradley
(1900-1979).
Our Christmas ducks, Artist signed coloured print, 41.5cm x 51cm
£50-80



▲ 197.
Ernest Herbert Whydale
(1886-1952).
Ploughing scene, Artist signed etching, 24.5cm x 30cm
£50-80



▲ 200.
Wilhelmina Barns-Graham (1912-2004).
Abstract in orange, black and yellow, Artist signed limited edition coloured print 25/75, 30cm x 39cm
£300-500



▲ 194.
Helen Layfield Bradley
(1900-1979).
Big Bertha, Artist signed coloured print, 48cm x 62cm
£50-80

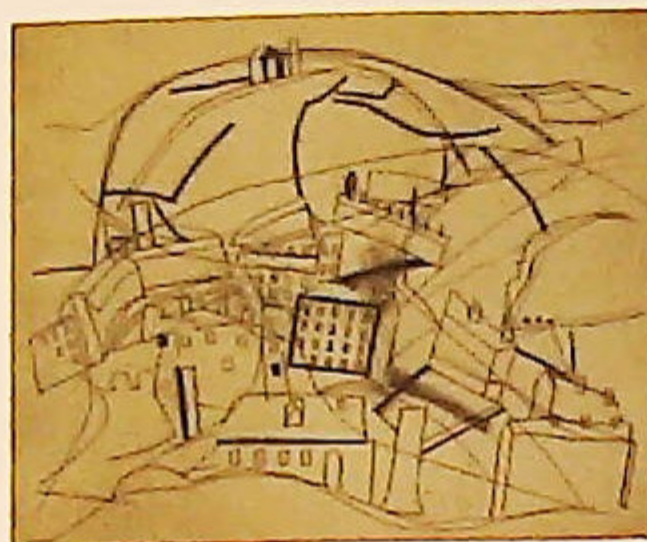
Lincoln Fine Art Sale



▲ 201.
Wilhelmina Barns-Graham (1912-2004).
Red Seal, Gouache, Signed and dated 1958, 23cm x 15cm
£800-1200



▲ 202.
Wilhelmina Barns-Graham (1912-2004).
Palinoro - Campagna, Pencil and gouache, Signed and dated 1955,
31cm x 41cm
£1000-1500



▲ 203.
Bryan Ingham (1936-1997).
Abstract landscape, Artist signed etching, number IV, dated 1973, 23cm x 27cm
£200-300



▲ 204.
Robert Brennan (b.1925)
Round table version IV, Multi-media, Signed and title verso, 16cm x 20cm
£30-50



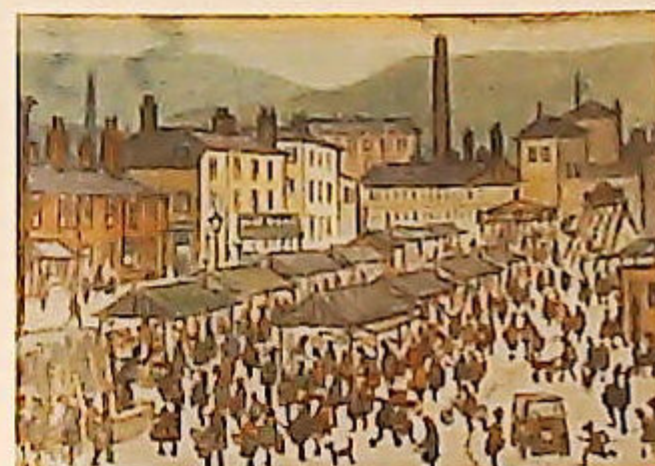
▲ 205.
Misome Peile (1907-1985).
Green hills, Multi-media, Initialled and titled verso, 29cm x 20cm
£70-90



▲ 206.
Garlick Barnes (1891-1987).
Floral still life, Watercolour, Signed, 23cm x 15cm
£70-90



▲ 207.
Lawrence James Isherwood (1911-1988).
Harbour hotel, Oil on board, Signed, dated (19)63 and titled verso, 40cm x 58cm
£200-400



▲ 208.
Lloyd George Higgins (1912-1980).
Old Market Town - Hyde, Watercolour, Signed and titled verso, 20cm x 27.5cm
£100-200



▲ 209.
Harry Charles Tim
(b.1956)
Figures, Acrylic, Signed,
44cm x 55cm
£50-80



▲ 210.
Richard Rowan (b.1974)
Radiance, Limited edition silk
on glass 81/95, 41.5cm x 90cm
£150-250



▲ 211.
Maison Privee
Sausage dog, Coloured,
triptych print, 150cm x 150cm
£30-50



▲ 212.
Alexander Millar (b.1960)
Cheeky girls, Artist signed
limited edition coloured print
92/395, 55cm x 45cm
£40-60



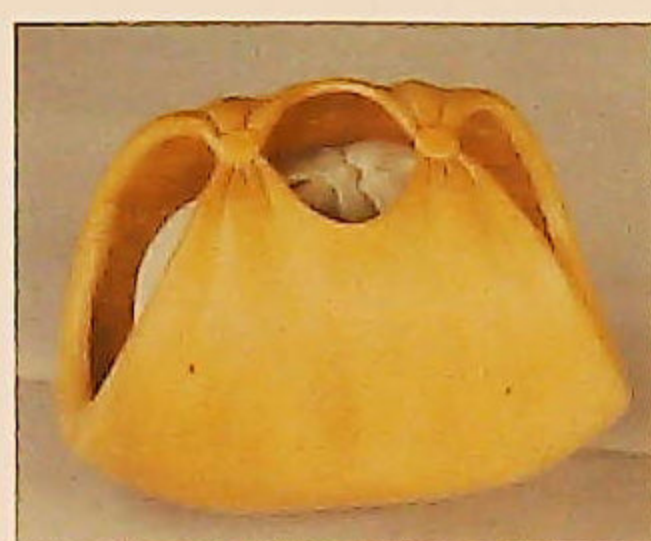
▲ 213.
Alexander Millar (b.1960).
Dancing in the Rain, Artist
signed limited edition giclee
print, 60cm x 47cm
£40-60



▲ 214.
20thC British School.
Last orders, Oil on canvas,
Indistinctly signed and titled
verso, 59cm x 119cm
£80-120



▲ 215.
20thC School.
Cat in a chair, Multi-media,
Indistinctly signed,
49cm x 38.5cm
£50-80



▲ 216.
Andy Banks
(20thC).
Bean and shell, Carved
wooden and stone sculpture
Signed and dated (19)96,
28cm x 42cm
£250-350



▲ 217.
Andy Banks
(20thC).
Horn, Carved wooden, stone
and woven sculpture, Signed
and dated (19)93, 64cm long
£200-300



▲ 218.
Andy Banks
(20thC)
Hands, Two part carved
wooden and marble sculpture,
Signed and dated (19)96, 11cm
high
£80-120

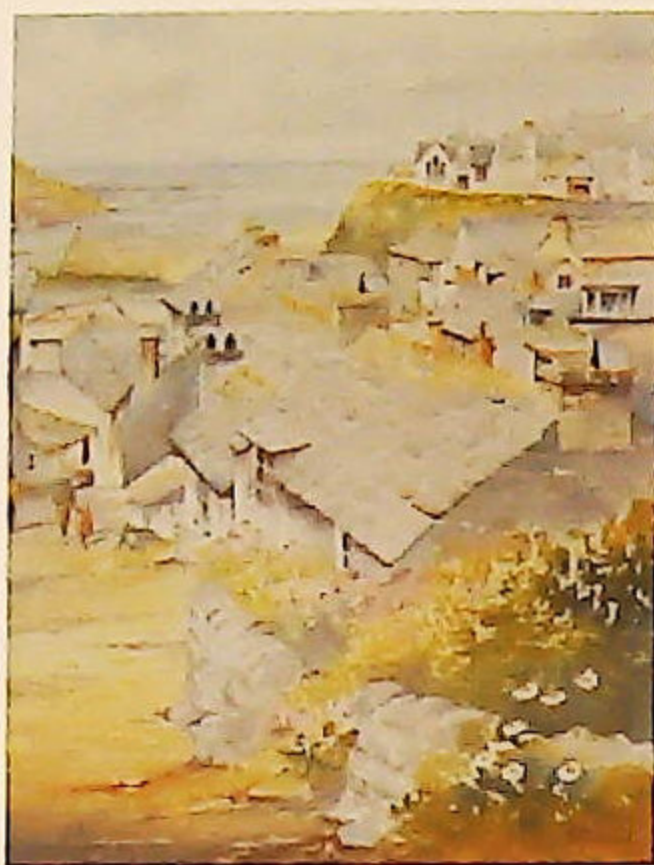


▲ 219.
Bernard Dufour (b.1922).
Female in courtyard, Oil on
canvas, Signed, 44cm x 37cm
£50-150



▲ 220.
Edith Frances Watt
(b.1923).
Street scene with flags, Oil on
board, Signed, 39cm x 29cm
£50-100

Lincoln Fine Art Sale



▲ 221.
K M Burton
(20thC).
Port Isaac Cornwall,
Watercolour, Signed and titled,
35cm x 25.5cm
£50-80



▲ 222.
Ian Scott (20thC).
Coastal scene, Oil on board,
Signed and dated (19)77
19cm x 27.5cm
£50-150



▲ 223.
Henry S Quarrie
(20thC).
Golden cocker spaniel, Oil on
board, Signed, 86.5cm x 57cm
£150-250



▲ 224.
Marzia Colonna (b.1951).
Embracing figures,
Watercolour, Signed,
22cm x 23cm
£50-80



▲ 225.
E Scott Jones
(20thC).
Ee-aye-addio we won the
league, Oil on board, Signed
and titled verso,
29.5cm x 40cm
£50-100



▲ 226.
Barbara McGregor
(20thC).
Breton Boats, Oil on board,
Initialled, 58.5cm x 37.5cm
£50-80



▲ 227.
Basil Hadley (1940-2006).
Abstract, Oil on board, Signed
and dated (19)61,
29cm x 66.5cm
£50-100



▲ 228.
Basil Hadley (1940-2006).
Abstract, Oil on board,
39cm x 99cm
£50-100



▲ 229.
Hendrik Grise (1917-1982).
Female nude study,
Watercolour, Signed and dated
(19)81, 50cm x 66cm
£50-100



▲ 230.
Ivan Bray (b. 1967)
Portrait, Mixed media on
paper, Signed verso,
43cm x 28cm
£50-100



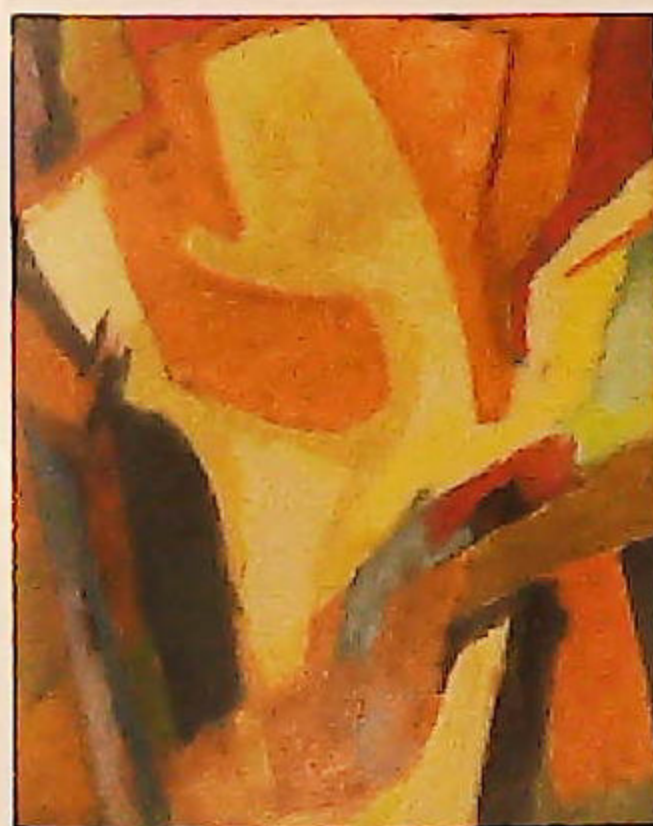
▲ 231.
Ivan Bray (b.1967).
Figure by a tree, Mixed media
on paper, Signed verso,
43.5cm x 28cm with exhibition
catalogues
£50-100



▲ 232.
Dimitri Chotstakovitch
(20thC).
Symphonie, Oil on board,
Signed and titled,
60cm x 60cm
£200-300



▲ 233.
Andre Verlon (1917-1993).
Houses, Oil on board, Signed,
46.5cm x 16.5cm, Label verso -
Brook Street Gallery
£100-150



▲ 234.
Robert Fontene
(1892-1980).
Abstract form, Oil on board,
Signed and dated (19)55,
47cm x 37cm
£400-600



▲ 235.
Jorge Aguilar-Agon
(b.1936)
Fishing boats in harbour, Oil
on canvas, Signed,
44cm x 90cm
£200-300



▲ 236.
Raymond Guerrier
(1920-2002).
Wildflowers in a blue jug, Oil
on canvas, Signed,
79m x 39.5cm, Label verso
- The Refern Gallery Exhib.
Mason-Watts Fine Art
£600-800



▲ 237.
Fred Stubbings
(19/20thC).
Azaleas in the woodland
Ofomenagh Iver Heath Bucks
Oil on board, Signed, dated
(19)37, and titled verso,
28.5cm x 38.5cm
£50-100



▲ 238.
Druie Bowett (1924-1998).
Industrial landscape, Pastel,
Signed and dated (19)61,
68.5cm x 97cm £50-150



▲ 239.
Claude Price (1892-?)
Vertical abstract, Oil on board,
Titled verso, 85cm x 13cm,
Stencilled verso - Nottingham
Education
£50-100

Lincoln Fine Art Sale



▲ 240.
Tom G Purvis (1888-1959)
Gun boat off Hong Kong, Oil on canvas, Signed and dated (19)30, 24.5cm x 37.5cm
£400-600



▲ 243.
Irene A Welburn (act.1936-1940).
Canal Lock, Oil on board, Signed, 59.5cm x 90cm
£50-150



▲ 246.
Frank McNichol (20thC).
Fishing village, Watercolour, Signed and dated (19)77, 33cm x 47cm
£40-60



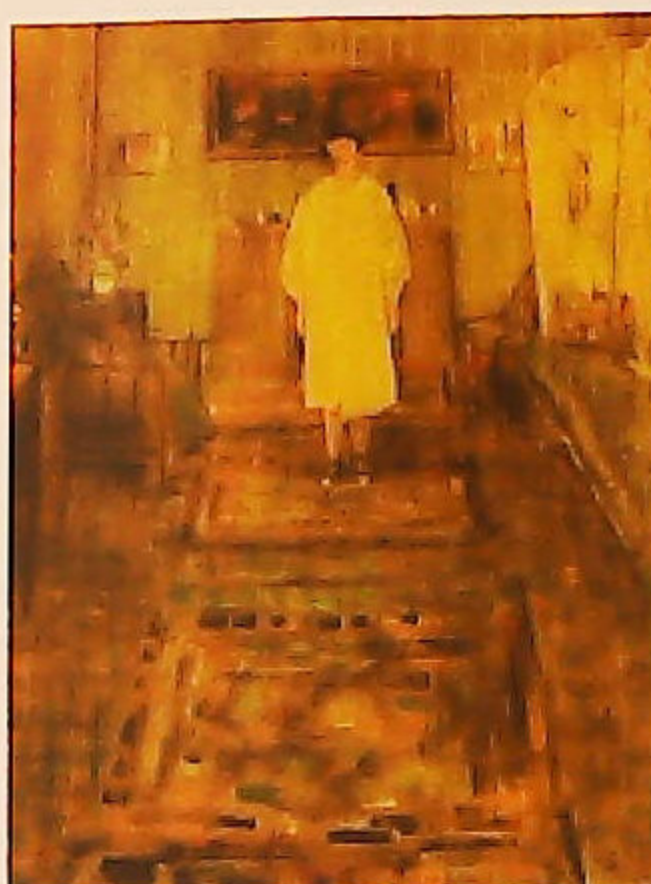
▲ 249.
Rose Papasian (20thC).
Abstract, Multi-media on paper, Signed, 17cm x 30cm
£50-150



▲ 241.
Charles Dixon (1872-1934)
The launch of the Princess of Wales battleship, Watercolour, Signed and titled verso
23.5cm x 33.5cm
£400-600



▲ 244.
Dennis Gilbert (1922-?)
Claudia, Oil on board, Signed and titled verso, 58cm x 48cm, Bears label - National Society London
£50-150



▲ 247.
Gilbert Mason (1913-1972).
Figure standing in front room, Oil on board, Signed and dated 1971, 90cm x 69.5cm
£100-200



▲ 250.
Domingo (b.1946).
Gloria, Pastel, Signed, 13cm x 29cm
Provenance: Spencer Coleman Gallery
£100-150



▲ 242.
Claire Spencer (b.1937).
Floral still life - Primula Obcornica, Watercolour, Signed, 57cm x 82.5cm, Artist label verso
£50-150



▲ 245.
H M Chan (20thC).
Still life with fruit and vegetables, Oil on canvas, Signed, 69.5cm x 69.5cm
£100-150



▲ 248.
Bruce Mulcahy (20thC).
Coastal scene, Oil on board, Signed, 22.5cm x 28.5cm
£50-80



▲ 251.
John Lewis Fitzgerald (b.1976).
Head study - Mr Aloof, Oil on board, Signed and titled verso, 28cm x 20cm
Provenance: Spencer Coleman Gallery
£80-120



▲ 252.
Paul Milner (b.1963).
My new yellow boat, Oil on board, Signed, 22cm x 27cm
Provenance: Spencer Coleman Gallery
£200-300



▲ 255.
Tony Stocker (1939-2003).
Sunset Riva Degli Schiayoni, oil on board, signed, titled and dated 1995 verso, bears label - The Gallery at Bacon's Bookshop Norfolk, 45cm x 60cm
£200-400



▲ 257.
Brian Tovey (b.1943).
River landscape, Oil on canvas, Signed, 34.5cm x 44.5cm
£100-200



▲ 259.
Gordon Stuart (20thC).
Jenny's Window, Multi-media, Signed, 50.5cm x 75cm
£100-200



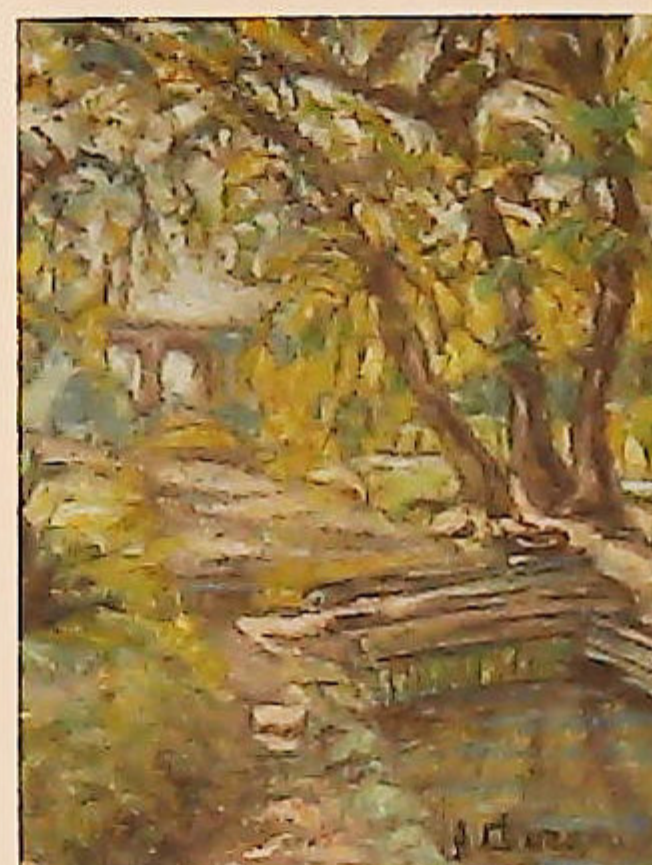
▲ 253.
Tony Stocker (1939-2003).
Fascade, Grande Canal Palazzo Tiepoletto, oil on board, signed and titled verso, 27cm x 43cm
£100-200



▲ 256.
Phyllida Nicholson (b.1924).
Mountain girl, Oil on canvas, Signed and titled verso, 59.5cm x 48.5cm, Label verso - Nottinghamshire Education Committee
£50-100



▲ 254.
Tony Stocker (1939-2003).
On The Grand Canal, oil on board, signed, titled and dated 1997 verso, 21.5cm x 44cm, bears label - The Gallery at Bacon's Bookshop Norfolk
£100-200



▲ 258.
Alfred Cluzeau (1890-1984).
Woodland scene, Oil on canvas, Signed, 60cm x 45.5cm
£50-100



▲ 260.
Ireland (20thC).
Abstract landscape, Oil on board, Signed and dated (19)57, 63cm x 75cm
£50-150



▲ 261.
Ronald Ossory Dunlop (1894-1973).
Still life, oil on canvas, signed, 75cm x 100cm
£500-800

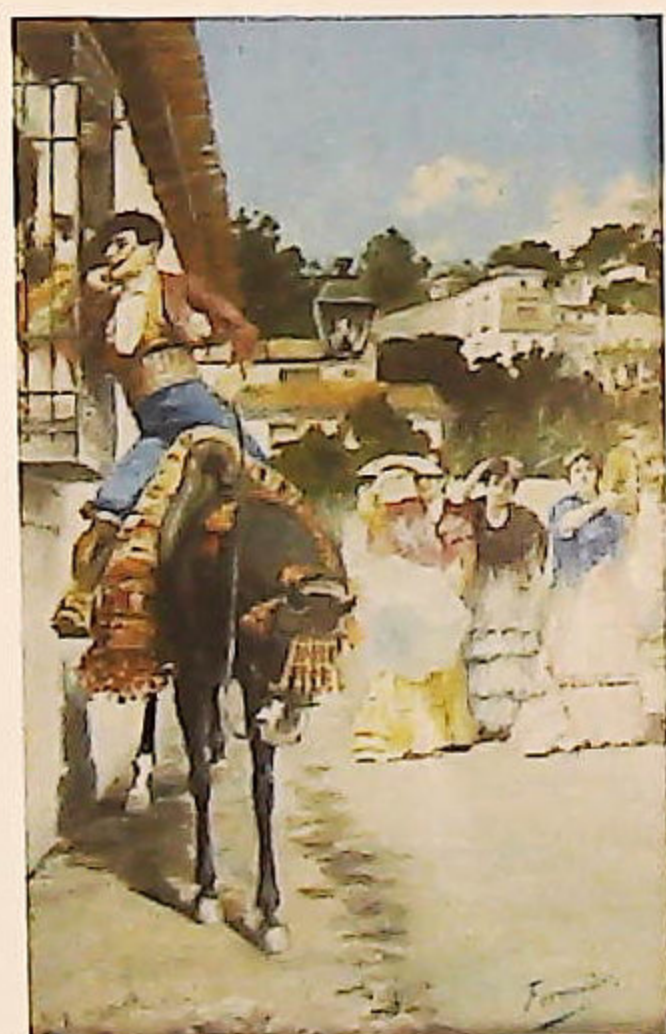
Lincoln Fine Art Sale



▲ 262.
Andrew Dzierzynski (b.1936).
Le Cassette, oil on board, signed, titled and dated 1977, 37cm x 40.5cm
£100-150



▲ 263.
Charles Brooke Farrar (1899-?)
Country landscape - with railway line and town in the background, Oil on canvas, Signed and dated (19)46, 39cm x 59.5cm
£50-100



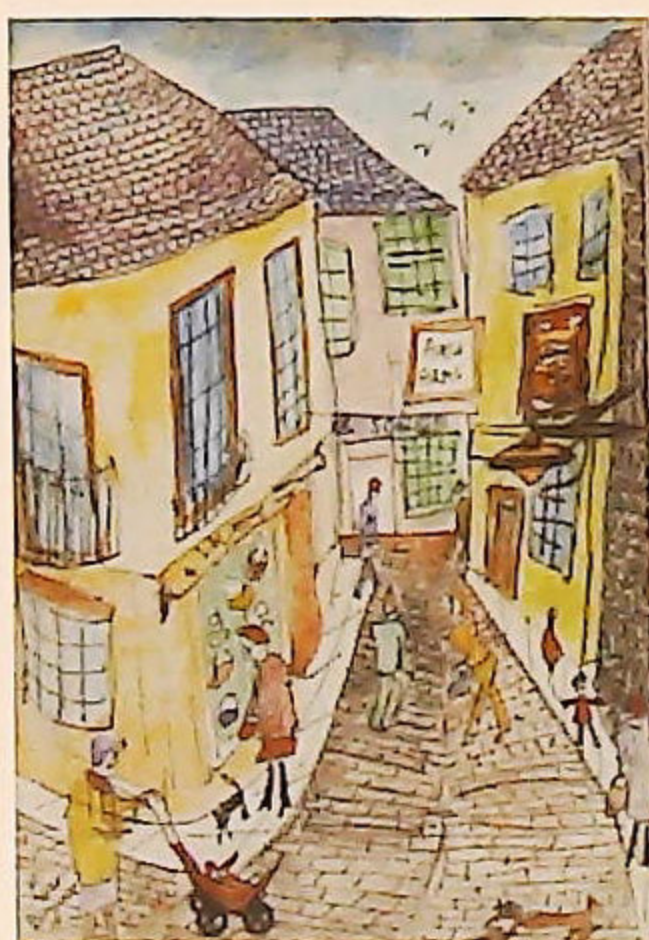
▲ 264.
Fernandez (19th/20thC).
Lovers greeting, Oil on panel, Signed, 28.5cm x 18.5cm
£200-300



▲ 265.
Roy Hewish (b.1929?)
Guitres France, Oil on board, Signed, 33cm x 40cm
£50-80



▲ 266.
Mortimer Creswick (19th/20thC).
Conway Castle, Watercolour, Signed and dated 1888, 11.5cm x 21cm
£50-80



▲ 267.
Lois Bygrave (1915-1996).
The Lanes - Brighton, Watercolour, Signed and titled verso, 20cm x 14cm
£80-120



▲ 268.
Lois Bygrave (1915-1996).
Taverna, Kostinou, Watercolour, Signed and titled verso, 14cm x 20cm
£80-120



▲ 269.
Lois Bygrave (1915-1996).
York, Watercolour, Signed and titled verso, 14cm x 20cm
£80-120



▲ 270.
Lois Bygrave (1915-1996).
Venice, Watercolour, Signed and titled verso, 14cm x 20cm
£80-120



▲ 271.
Deirdre O'Connell (20thC).
Coastal scene, Watercolour, Signed and dated (19)47, 22cm x 29cm
£50-80



▲ 272.
Robert Eggington (b.1943).
Mountain river landscape, Oil on board, Signed, 39cm x 49.5cm
£50-100



▲ 273.
Pisciotta (20thC).
Italy coastal scene, Oil on board, Indistinctly signed, 49cm x 59cm
£50-80



▲ 274.
E Newns (20thC).
Miner's boots and lamps, Oil on board, Signed, 69cm x 51cm



▲ 275.
19thC British School.
River scene with figures
and boats, Oil on canvas,
Indistinctly signed,
29cm x 44.5cm
£50-80



▲ 278.
**William John Botten
Jenkins (1912-1994).**
Loch and keeper's cottage, Oil
on board, Titled verso,
24cm x 34.5cm
£50-80



▲ 281.
John Yardley (b.1933).
Flower arrangement at St
Phillips, Watercolour, Signed
and titled verso, 26cm x 35cm,
Label verso Bourne Gallery
Reigate Surrey
£100-200



▲ 284.
Peter Barker (b.1954).
Sunbeams, Oil on board,
Signed and titled verso,
25cm x 35cm
*Provenance: Spencer Coleman
Gallery*
£100-200



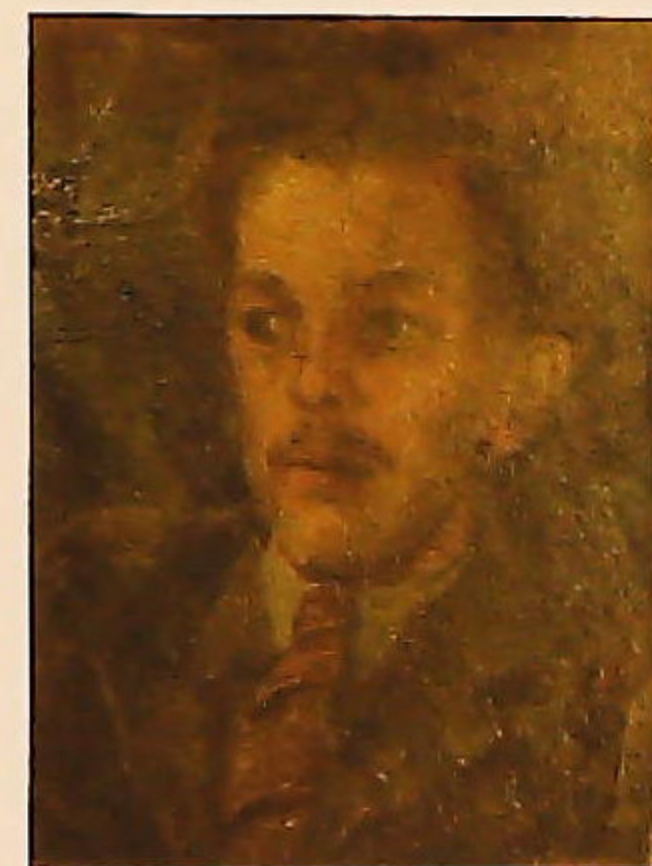
▲ 276.
Ettore Tito (1859-1941).
Princess and knight on
horseback, Watercolour,
Signed, 19cm x 29cm
£50-100



▲ 279.
Cubley (19th/20thC).
Coastal scene, Oil on board,
Signed, 25.5cm x 39.5cm
£50-100



▲ 282.
Ronald Cavalla (b.1940).
Fishing on the riverbank -
village in the background, Oil
on board, Signed, 12cm x 18cm
£50-80



▲ 285.
20thC British School.
Head and shoulders study of
a young man, Oil on board,
Indistinctly signed,
41cm x 31cm
£50-80



▲ 277.
**H F Shuttleworth
(19th/20thC).**
Three figures on steps, Oil on
board, Indistinctly signed,
22cm x 19cm
£50-80



▲ 280.
Ken Lamming (b.1924).
The garden in June, Oil on
canvas, Signed and titled
verso, 49.5cm x 38.5cm
£50-80



▲ 283.
Ronald Cavalla (b.1940).
Fishing on the riverbank -
rural landscape, Oil on board,
Signed, 25cm x 29cm
£80-120



▲ 286.
**Richard Tearoe
(20thC).**
Sailing boats at sea, Oil on
canvas, Signed, 51cm x 76cm
£50-100

Lincoln Fine Art Sale



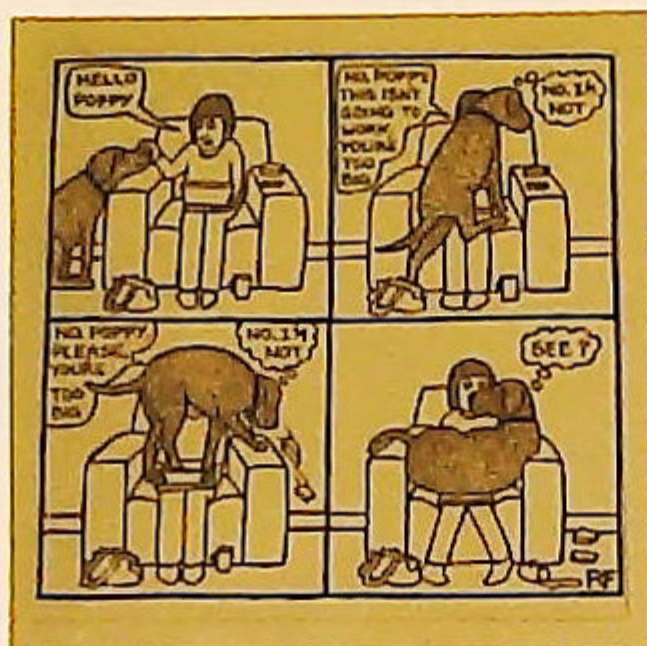
- ▲ 287.
W. Luce (20thC).
Power lines in landscape,
Pastel and watercolour, Signed
and dated (19)42,
45.5cm x 61.5cm
£50-80



- ▲ 289.
After Rupert Fawcett
Today I'm going to be
magnificent, Hello Poppy, Two
Art you grew up with stamp,
Limited edition prints 51/500,
61/500, 25cm x 25cm (2)
£50-100



- ▲ 288.
In the manner of
John Stevens.
Maiden in costume, Oil on
canvas, 49cm x 39.5cm
£50-80



- ▲ 290.
Gregory Alexander
(b.1960).
Masai Warrior, Watercolour,
Signed, 17.5cm x 12cm, Label
verso Bankside Gallery
London
£50-80



- ▲ 291.
Alessandro Maffei
(20thC).
Italian river scene, Oil on
board - a pair, Signed,
11cm x 11cm
£50-100



- ▲ 292.
Szabo (20thC).
Fruit still life, Oil on board - a
pair, Signed, 12cm x 17cm
£50-100



- ▲ 293.
John Stanton Ward
(1917-2007)
Mrs Gabe, Watercolour, Signed
and dated 1963, 30cm x 47cm
Provenance: Joyce Grenfell
£200-300



- ▲ 294.
David Jean (b.1938).
The Meeting, Oil on canvas,
Signed and dated (19)91,
60cm x 90cm
£50-100



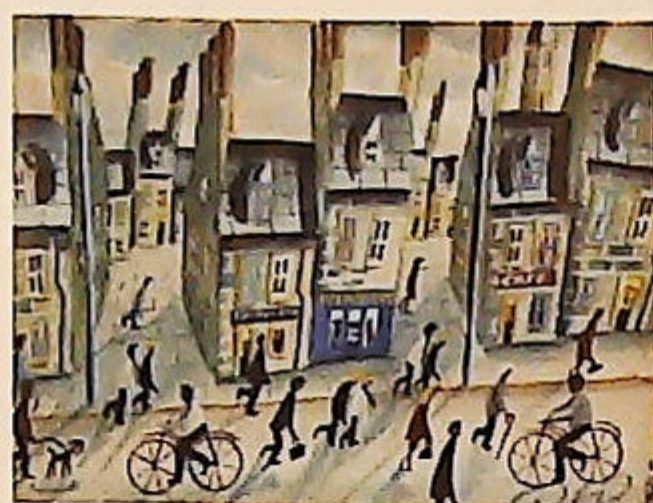
- ▲ 295.
Campbell Archibald
Mellon (1876-1955).
Norfolk landscape, Oil on
canvas, Monogrammed and
titled verso, 23.5cm x 35.5cm
£300-400



- ▲ 296.
Leach pottery / St Ives
stonewares
Two casserole dishes and
covers, 20cm and 15cm dia,
and a mead cup, 5.5cm high -
impressed marks (3)
£50-100



- ▲ 297.
The Studio Year Book 1907,
and other art catalogues,
brochures etc (qty).



- ▲ 299.
John Ormsby (b.1969)
Fish and Chips, Watercolour
Signed and dated,
19cm x 24cm
£50-100



- ▲ 298.
Joseph H. Sulkowski (b.1951)
Foxhound in his Master's Quarter, Oil on board, Signed and titled
verso, 39cm x 49cm
£600-800



The wrong time to find out
what it was worth...



Over 25 million pounds of
antiques & fine art valuation
in UK & Europe in 2014.

EST
1864
GOLDING YOUNG

Our senior valuers
William Gregory MRICS
and Colin Young MRICS
offer free advice for Insurance,
Tax Planning and Probate reporting
and of course the sale of
single items and collections.

The Bourne Auction Rooms
+44 (0) 1778 422686

The Lincoln Auction Rooms
+44 (0) 1522 524984

The Grantham Auction Rooms
+44 (0) 1476 565118

The Stamford Valuation Office
+44 (0) 1780 751666

CHARTERED AUCTIONEERS & VALUERS
ARTS & ANTIQUES SURVEYORS



goldingyoung.com

Artist index

NAME: LOT NUMBER

A			
Ackroyd, Norman	156		
Aguilar-Agon, Jorge	235		
Alexander, Gregory	290		
Allemand, J.H	74		
Anderton, Tom	122		
B			
Baker, Harry	138		
Ballace, Percy des Carrieres	125		
Banks, Andy	216-218		
Bardill, Ralph William	70		
Barker, Peter	284		
Barnes, Garlick	206		
Barns-Graham, Wilhelmina	5, 200-202		
Blome, Jenny	143		
Bowett, Druie	238		
Bond, Richard Sebastian	97		
Bradley, Helen Layfield	193-196		
Bray, Ivan	230, 231		
Brennan, Robert	204		
Bronte, Patrick Branwell	18		
Brookes, W.T	27		
Browne, Clive R	169		
Bruckman, Willem Leendert	147		
Bullock, S.	168		
Burgess, J.T	166		
Burton, K.M	221		
Busk, William	110		
Bygrave, Lois	267-270		
C			
Cavalla, Ronald	282, 283		
Chan, H.M	245		
Chatten, Geoffrey	144		
Chotstakovitck, Dimitri	232		
Cluzeau, Alfred	258		
Colonna, Marzia	224		
Constable	1		
Cowan, Stuart W	170		
Craft, Percy Robert	2		
Creswick, Mortimer	266		
Cubley	279		
Cubley, Henry Hadfield	11		
D			
Davis, Benjamin	65		
Davis, Valentine	115		
Dean, William Edward James	85		
Dixon, Charles	241		
Domingo	250		
Dragne, Nicholas	104		
Dufour, Bernard	219		
Dunlop, Ronald Ossory	261		
Dzierzynski, Andrew	262		
E			
Eadie, Nadia Tzatchev	167		
Ege, Morgens	131		
Eggington, Robert	272		
F			
Farrar, Charles Brooke	263		
Fernandez	264		
Findley, H.H	175		
Fisher, William Mark	71		
Fitzgerald, John Lewis	251		
Fomin, Piotr	123		
Fontene, Robert	234		
G			
Gibson, Joseph Vincent	12		
Gilbert, Dennis	244		
Glass, John Hamilton	145		
Green, Constance Marjorie	124		
Grenze, Jean-Baptiste	69		
Greig, Donald	117		
Grise, Henrik	229		
Guerrier, Raymond	236		
H			
H, R	137		
Haddelsey, Vincent	179-189		
Hadley, Basil	227, 228		
Hall, Walter J	140		
Harding, Emily J	101, 102		
Hardy, Richard Mrs	100		
Hayward, Arthur	151		
Helda, Van	38		
Henley, William Bidwell	30		
Hewish, Roy	265		
Higgins, George Lloyd	208		
Holmes, Frank	119, 120		
Hughes, Arthur	96		
I			
Ingham, Bryan	203		
Ireland	260		
Isherwood, Lawrence James	3, 207		
Ixer, Robert	171-173		
J			
Jackson, M	33		
Jean, David	294		
Jenkins, William John Botten	278		
Johnson, Clara L	134		
Jones, E. Scott	225		
K			
Keely, John	94		
Kilpack, Sarah Louise	62		
Kleckowski, S	158		
Knobloch, Josef Rolf	142		
Knudsen, Peder Jacob Marius	127, 128		
L			
Lambert, Robert Thompson	126		
Lamming, Ken	280		
Langham	61		
Leitch, William Leighton	31		
Lightfoot, Peter	174		
Lowry, Laurence Stephen	190		
Luce, W	287		
M			
Maffei, Alessandro	291		
Makin, James K	155		
Mason, Gilbert	247		
Mathieson, John George	150		
McEwan, D.H.	54		
McGregor, Barbara	226		
McNichol, Frank	246		
Mellon, Campbell Archibald	295		
Mellor, Everett Watson	9, 10		
Melville, Harden Sidney	112		
Meyer, Jacob	129		
Millar, Alexander	212, 213		
Millias, Raoul	121		
Mills, Robert	20		
Milner, Paul	7, 252		
Moore, John	16		
Mostyn, Thomas Edwin	24		
Mulcahy, Bruce	248		
N			
Nash, J	48		
Newns, E	274		
Nicholson, Phyllida	256		
O			
O'Connell, Deirdre	271		
Ormsby, John	299		
Oules, Catherine	139		
P			
Palmer, Henry Sutton	63		
Papasian, Rose	249		
Peacock, Ralph	157		
Peile, Misome	205		
Pieters, Evert	114		
Pine			76
Pisa, A			60
Pisciotta			273
Pontin, George			116
Pooley, Geoffrey H			118
Price, Claude			239
Purvis, Tom G			240
Q			
Quarrie, Henry S			223
R			
Rainbird, Victor Noble			146
Redfern, Richard			148, 149
Redgate, Arthur William			95
Reynolds, Sir Joshua			8
Richards, W			25
Rip, Willem, Cornelis			75
Rolf, Douglas			176-178
Rowan, Richard			210
Royle, Herbert F			152
S			
S, C.W			93
Sayer, Harold			199
Scarborough, Frederick			
William			72
Scott, Ian			222
Serres, C.M			154
Shaw, Charles L			14
Shepherd, David			192
Shuttleworth, H. F			277
Smyth, Edward Robert			21
Spencer, Claire			242
Stocker, Tony			253-255
Strappen, E. J. Van			159
Stuart, Gordon			259
Stubbings, Fred			237
Sulkowski, Joseph H			298
Szabo			292
T			
Tearoe, Richard			286
Theer, Adolf			107
Thomas, M.F			47
Thomas, William Bartol			161-165
Thorbjorn, Einar			130
Thornley, William Anslow			15
Tim, Harry Charles			209
Tito, Ettore			276
Tovey, Brian			257
Treyer, Jean			23
Tyson, John H			73
V			
Vermeillet, A			113
Verneer, Elchanon Leonardus			59
Verlon, Andre			233
Vickers, Alfred			28, 29
Vickers, Alfred H			19, 26, 50
W			
Wagner, Carl			133
Walbourn, Ernest Charles			4
Walker, David Bond			153
Walsh, T			77
Ward, John Stanton			293
Watt, Edith Frances			220
Welburn, Irene A			243
Whaplinton, C			32
Whydale, Ernest Herbert			197
Wilkinson, Henry			198
Williams, Graham			111
Wilson, Charles Edward			66, 67
Y			
Yardley, John			281

PROBATE – INHERITANCE TAX ASSESSMENT

For many Executors and Trustees the responsibility of dealing with a deceased's Estate is a once-in-a-lifetime experience. You have to make a number of important decisions in a very short space of time and all when the loss is most difficult to come to terms with.

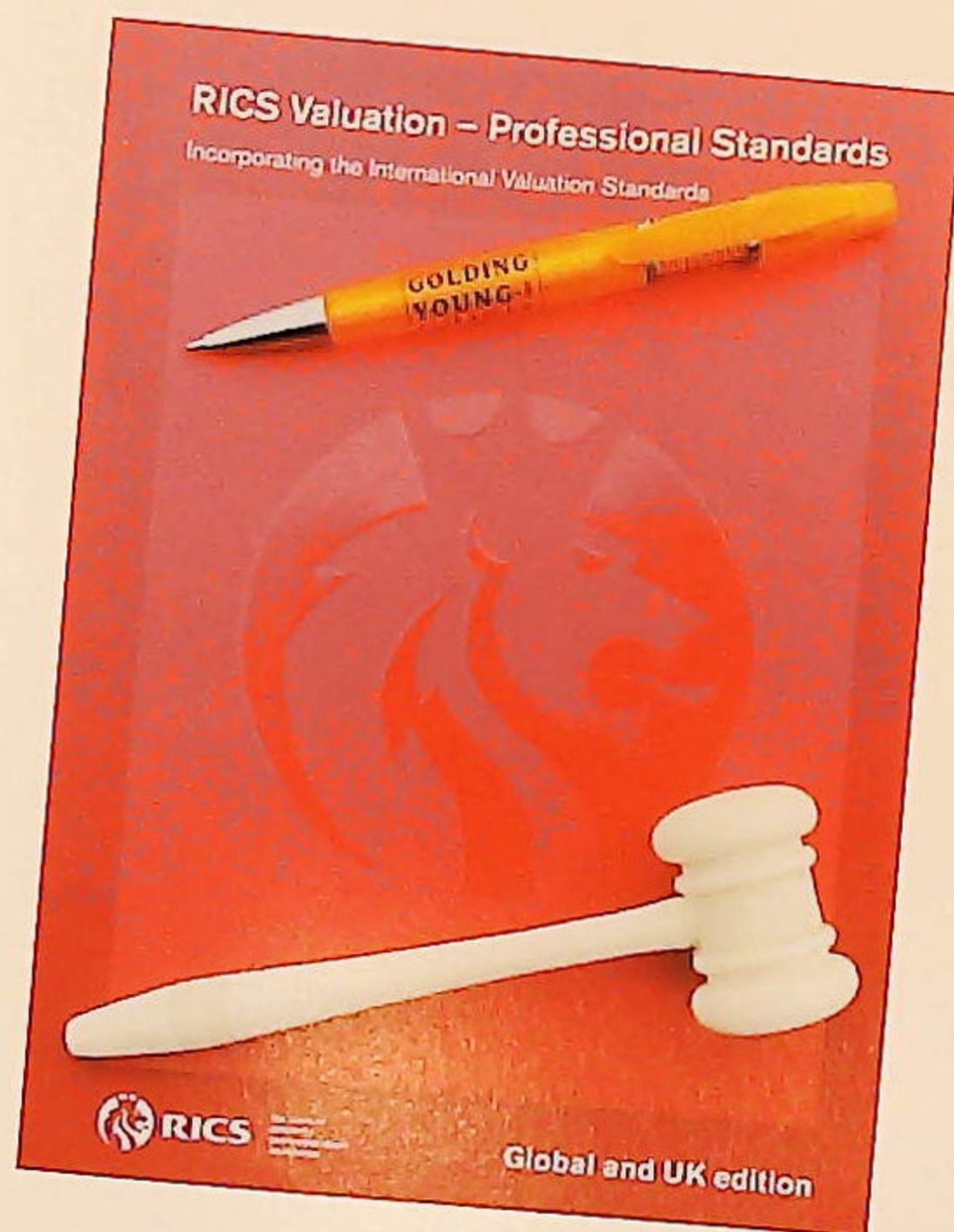
The position of Executor is an important one in law and has defined personal liability and responsibility. To exhibit due diligence to beneficiaries and more importantly HM Revenue & Customs, an Executor or advisor will instruct a firm Regulated by RICS.

Even if the estate will be taxed at 0%, a valuation remains an essential tool for an Executor. The inventory will still be used for identification of bequests, trust items, family division and proof of value.

Our valuations are prepared to the International Valuation Standards requirement of the 'Red Book'.

The report will cover sections of:

- Jewellery
- Vehicles
- Antiques, Fine Art & Collections
- General Furniture & Effects



For initial advice contact the following Chartered Auctioneers & Valuers:

Bourne, Stamford & South
Colin Young MRICS
01778 422686

Grantham, Lincoln & North
William Gregory MRICS
01522 524984

EST
1864

GOLDING YOUNG

A white van with 'LOWES LOGISTICS 2 removals + transport' written on its side. A circular badge on the van says '150 YEARS Experience'.

Removals – Household & Commercial

- Free Quotations
- Full Packing Service
- Suppliers of Packing Materials
- Shipping & Storage Arranged
- Antiques & Fine Art Specialists
- Specialist Piano Movers
- Office Movers

Contact Andrew Lowes on 07970 742577 for a quote
or email lowes@goldingyoung.com

goldingyoung.com

PRIVATE CLIENT & PROFESSIONAL SERVICE DEPARTMENT

We value personal property for private and corporate clients. Our team have valued family heirlooms, art collections and museum holdings for a variety of purposes.

We are the only auction house in the region to have a bespoke Private Client Department with:

- Two Chartered Arts & Antiques Surveyors
- Two RICS/ Antiques Trade Gazette professional assessment award-winning valuers
- Two In-house qualified jewellery valuers
- Experience in abundance and diversity since 1864
- Nine professional staff with RICS, NAVA or SoFAA qualifications.