

EST
1864

GOLDING YOUNG

Fine Art Sale
Wednesday 22nd August 2018



CHARTERED AUCTIONEERS & VALUERS • ARTS & ANTIQUES SURVEYORS

PROBATE – INHERITANCE TAX ASSESSMENT

For many Executors and Trustees the responsibility of dealing with a deceased's Estate is a once-in-a-lifetime experience. You have to make a number of important decisions in a very short space of time and all when the loss is most difficult to come to terms with.

The position of Executor is an important one in law and has defined personal liability and responsibility. To exhibit due diligence to beneficiaries and more importantly HM Revenue & Customs, an Executor or advisor will instruct a firm Regulated by RICS.

Even if the estate will be taxed at 0%, a valuation remains an essential tool for an Executor. The inventory will still be used for identification of bequests, trust items, family division and proof of value.

Our valuations are prepared to the International Valuation Standards requirement of the 'Red Book'.

The report will cover sections of:

- Jewellery
- Vehicles
- Antiques, Fine Art & Collections
- General Furniture & Effects



For initial advice contact the following Chartered Auctioneers & Valuers:

Bourne, Stamford & South
Colin Young MRICS
01778 422686

Grantham, Lincoln & North
William Gregory MRICS
01522 524984



Removals – Household & Commercial

- Free Quotations
- Full Packing Service
- Suppliers of Packing Materials
- Shipping & Storage Arranged
- Antiques & Fine Art Specialists
- Specialist Piano Movers
- Office Movers

Contact Andrew Lowes on 07970 742577 for a quote
or email lowes@goldingyoung.com

goldingyoung.com

PRIVATE CLIENT & PROFESSIONAL SERVICE DEPARTMENT

We value personal property for private and corporate clients. Our team have valued family heirlooms, art collections and museum holdings for a variety of purposes.

We are the only auction house in the region to have a bespoke Private Client Department with:

- Four Chartered Arts & Antiques Surveyors
- Two RICS/ Antiques Trade Gazette professional assessment award-winning valuers
- Two In-house qualified jewellery valuers
- Experience in abundance and diversity since 1864
- Ten professional staff with RICS, NAVA or SoFAA qualifications.

Summer reView

It has been a very busy summer for auction sales with the crescendo of all three salerooms having to hold extended two-day sales in July offering just under 5,000 diverse lots in that month alone.



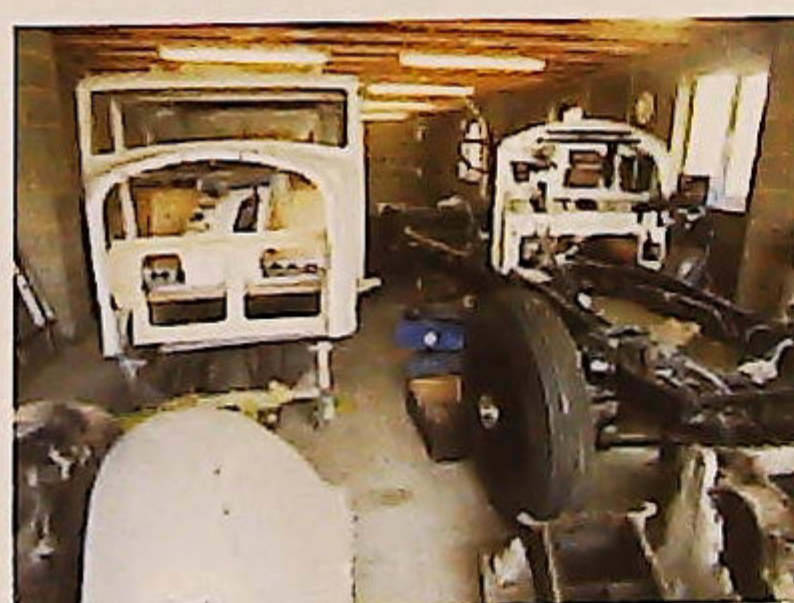
George III bracket clock by John Archambo
SOLD for £5,000



Art Deco dancer by Demetre H Chiparus
SOLD for £15,000



Silver tazza by Georg Jensen
SOLD for £1,700



1935 Rolls Royce Phantom III
SOLD for £16,000

It has been a very busy summer for auction sales with the crescendo of all three salerooms having to hold extended two-day sales in July offering just under 5,000 diverse lots in that month alone.

Grantham started the 'hot-lot-wave' with over 400 lots purely from the estate of Lance Gay, a well respected collector and attendee at Golding Young sales. For many of his silver and jewellery lots it was second time under the hammer for me having already sold so much of it to him from a variety of previous collections and estates over the decades.

Bourne followed with one of the most interesting and complicated consignments to realise. The estate of Rolls Royce enthusiast John Little near Spalding saw a tender sale of over 170 lots of Rolls Royce parts and spares followed by the auction sale of his mid-restoration 1935 Phantom III, known as 34-EX. In October 1936 The Autocar magazine published a road test report of two Phantom III cars, 34-EX was subjected to lengthy trials and the car was used to provide driver data and performance figures. This particular car was famously tested fully laden with its original large Hooper limousine body completing an historic journey across the Sahara desert. All this provenance it made up for fact that it was still in hundreds of pieces looking like an oversized Meccano set, but still achieving a hammer price of £16,000.

Lincoln completed the hat-trick of sales with long standing clients of the firm clearing The Estate House on The Avenue in Harewood, near Leeds selling a fine family collection of Georg Jensen silver from the 500+ lots consigned. Artworks from the property are included in this catalogue.

As we look forward to the Autumn sale programme we will be going to weekly sales until December and the Grantham Asian Art Sales have now been extended to incorporate other fine ceramics. The next sale on the 5th September already includes a comport from the Coronation Banquet of George IV in 1831.

Finally, my congratulations go to two of our valuers on passing professional examinations and gaining further qualifications in recent months. Craig Bewick at Grantham is now a member of RICS and Alastair McPhie-Meiklejon at Louth is now member of NAVA.

We look forward to your support at future sales.

Colin R Young MRICS FNAVAASFAV

Paintings, Drawings & Sculpture

Any statement as to authorship, attribution, origin, date, age, provenance and condition is a statement or opinion and is not to be taken as a statement or representation of fact. Golding Young & Mawer reserve the right, in forming their opinion, to consult and rely upon any expert or authority considered by them to be reliable.

A picture catalogued with the forename(s) and surname of the painter is in our opinion a work by that artist; e.g. Joseph Mallord William Turner. When an artist's forename(s) is not known, a series of asterisks followed by the surname of the artist, whether preceded by an initial or not, indicates that in our opinion the work is by the artist.

1. **Attributed to....** is in our opinion probably by the artist.
2. **Studio of....** is in our opinion a work from the studio of the artist which may or may not have been executed under his direction.
3. **Circle of....** is in our opinion a work of the period of the artist executed under his immediate influence.
4. **Follower of....** is in our opinion a work by a painter working in the artist's style, contemporary or nearly contemporary, but not necessarily his pupil.

5. **Manner of....** is in our opinion a work in a style related to that of the artist, but of a later date.
6. **School....** is in our opinion the picture was executed at that time and in that location.
7. **After....** is in our opinion a copy of any date after a work by that artist.
8. The term **signed** and/or **dated** and/or **inscribed** means that in our opinion the signature and/or date and/or inscription are from the hand of the artist.
9. The term **Bears signature** and/or **dated** and/or inscription means that in our opinion the artist's name and/or date and/or inscription have been added by another hand.
10. All references to signatures, inscriptions and dates refer to the present state of the work.
11. Dimensions are given height before width.

Artist's Resale Right Scheme (Droit de Suite)

Following the UK's implementation of the EU Artist's Resale Right directive in February 2006, living artists are entitled to receive a resale royalty each time their art work is sold in the UK by an art market professional, subject to certain conditions. In January 2014 this has been extended to the sale of works of art of artists who have died in the previous 70 years, despite the wishes of the British Art Market Federation and other professional bodies. This payment is calculated on qualifying works of art which are sold for a hammer price or best bid price of more than EUR 1000. The UK sterling equivalent of EUR 1000 will fluctuate in line with prevailing exchange rates.

The actual qualifying threshold will be calculated by the Artist's Resale Right Service Hub based on the European Central Bank reference rate published at 2.15pm on the day of the sale.

The royalty charge will apply if the hammer price is more than the UK sterling equivalent of EUR 1000. The royalty charge will be added to buyer invoices and must be paid before items can be cleared. No handling costs or additional fees with respect to these charges are retained by auctioneers despite us having to undertake all of the extra and considerable administration work. This sum is then paid by us to a 'not-for-profit' collecting society, who will actually extract their administration fees. Any residual amount may go to benefit the artist.

Portion of the hammer price (Euro's EUR)	Royalty rate
1000 to 50,000	4%
50,000.01 to 200,000	3%
200,000.01 to 350,000	1%
350,000.01 to 500,000	0.5%
Exceeding 500,000	0.25%

VAT is not payable on this royalty charge. A maximum royalty charge is 12,500 EUR. Revised 4th January 2011.



SOCIETY OF FINE ART AUCTIONEERS AND VALUERS



The Lincoln Art Sale

Wednesday 22nd August 2018

At The Lincoln Auction Rooms

Viewing & Selling in The Gallery

At Thos Mawer House

Sale commences at 6pm

Viewing: Sunday 18th 2pm-5pm

Tuesday 21st 10am-4pm

& saleday from 2pm

Bid online or simply watch the sale live at



the-saleroom.com

live auctions

All enquiries to William Gregory MRICS on 01522 524984

Front cover image: Lot 16 Thomas Sidney Cooper (1803-1902).

**A bull and seven cows on the bank of a river - evening in Marshes near Canterbury,
oil on canvas, signed and dated 1836, 44cm x 59.5cm.**

Lincoln Fine Art Sale



▲ 1.
Giovanni Signorini (1808-1864).
Florence view, oil on canvas, signed and dated 1852, 56cm x 70.5cm.
£1500-2500



▲ 4.
Johannes M Fasting Wilhjelm (1868-1938).
Mother and daughter walking on a beach, with rowing boats, village in the distance, signed and dated (19)17, 69cm x 93cm.
£1500-2500



▲ 2.
Jose Gurvich (1927-1974).
New York, watercolour, signed, titled and dated 1970, 26.5cm x 34.5cm.
£1500-2000



▲ 5.
Thomas Sidney Cooper (1803-1902).
In the Whitehall Meadows Canterbury, oil on canvas, signed and dated 1832, 69.5cm x 89.5cm.
Provenance: Christie's New York 23rd February 1989 Lot 451, Koller Zurich 18th September 2009 Lot 3235
See Westwood, Kenneth J - Thomas Sidney Cooper His Life and Work 0.1832.3 p.168 plate 23 page 81
£6000-8000



▲ 3.
Laurence Stephen Lowry (1887-1976).
Britain at Play, artist signed coloured print, 47.5cm x 61cm.
£1500-2000



▲ 6.
Attributed to Theodore Gericault (1791-1824).
Academie d'Homme, oil on canvas, 79cm x 57cm.
£10000-15000



▲ 7.
19thC British School.
Half length portrait of a young lady with dog, oil on canvas, 90cm x 70cm.
£500-800



▲ 8.
19thC British School.
Hot Spur, oil on canvas, titled verso, label verso By the Will of Sir Richard Sutton, 48.5cm x 60cm.
£400-600



▲ 9.
Adolphe Ragon (?-1924).
Beach scene, watercolour, signed and dated 1893, 25.5cm x 48.5cm.



▲ 10.
William Bartol Thomas (1877-1947).
Fishing on the banks of a Lincolnshire river, watercolour, signed, 23.5cm x 35cm.
£150-250



▲ 11.
Andries van den Berg (1852-1944).
Mother and children - interior scene, oil on canvas, signed, 62cm x 75.5cm.
£500-800



▲ 12.
19thC British School.
Figures in country landscape, oil on canvas, 62cm x 75cm.
£200-400



▲ 13.
Charles Davidson (1820-1902).
Farmyard scene with animals, watercolour, 39.5cm x 59cm.
£500-1000



▲ 15.
Thomas Sidney Cooper (1803-1902).
An extensive landscape, with three sheep in the foreground, watercolour, signed and dated 1862, 26.5cm x 32cm.
Provenance: Henry Spencer and Sons Retford 18th June 1977 Lot 74
£800-1200



▲ 14.
Thomas Sidney Cooper (1803-1902).
Sheep grazing on the south, oil on board, signed and dated 1889, artist seal verso, 49cm x 59cm.
Provenance: Phillips 30th November 1999 Lot 138, Haynes Fine Art See Westwood, Kenneth J - Thomas Sidney Cooper His Life and Work D.1889 16 page 453
£2000-3000

Lincoln Fine Art Sale



- ▲ 16.
Thomas Sidney Cooper (1803-1902).
A bull and seven cows on the bank of a river - evening in Marshes near Canterbury, oil on canvas, signed and dated 1836, 44cm x 59.5cm.
Provenance: Christies 13th May 1897, Wintertons 2nd November 2009
See Westwood, Kenneth J - Thomas Sidney Cooper His Life and Work, O.1836.21 page 194
£5000-7000



- ▲ 17.
Thomas Sidney Cooper (1803-1902).
Cattle in the snow, cattle in a winter landscape, watercolour, signed and dated 1886, 67.5cm x 102cm.
Provenance: Christies 20th March 1920 Lot 1
Christies 10th December 1923 Lot 41
Christies 5th June 1923 Lot 210
Christies 10th December 2008 Lot 41
Label verso T Bromley and Son, Bolton
See Westwood, Kenneth J Thomas Sidney Cooper His Life and Work D.18861 page 439 plate 304 Page 254
£3000-5000



- ▲ 18.
Thomas Sidney Cooper (1803-1902).
Sheep on a moor, oil on board, signed and dated 1857, 20cm x 30cm.
Provenance: Sothebys 10th March 1974 Lot 86, Sothebys 18th March 1980 Lot 104
See Westwood, Kenneth J Thomas Sidney Cooper His Life and Work D.1857.29 page 286
£800-1200



- ▲ 19.
Thomas Sidney Cooper (1803-1902).
Frederick Richard Lee (1798-1879), wooded landscape with cattle watering, oil on board, signed and dated 36.5cm x 49cm, label verso Richard Green London.
£4000-6000



- ▲ 21.
Thomas Sidney Cooper (1803-1902).
Horse drawn cart, pencil, signed, 14cm x 23cm.
Provenance: Bloomsbury 10th September 2009 Lot 612
£300-500



- ▲ 20.
Thomas Sidney Cooper (1803-1902).
To Market in a Snowdrift (The Wintery Road to Market), oil on canvas, signed and dated 1888, 74.5cm x 100cm.
Provenance: Phillips 12th July 1982 Lot 169, exhibited Royal Academy 1888, no. 480, label verso Burlington Paintings London
See Westwood, Kenneth J Thomas Sidney Cooper His Life and Work D.1883.3 page 447, plate 312 Page 259
£3000-5000



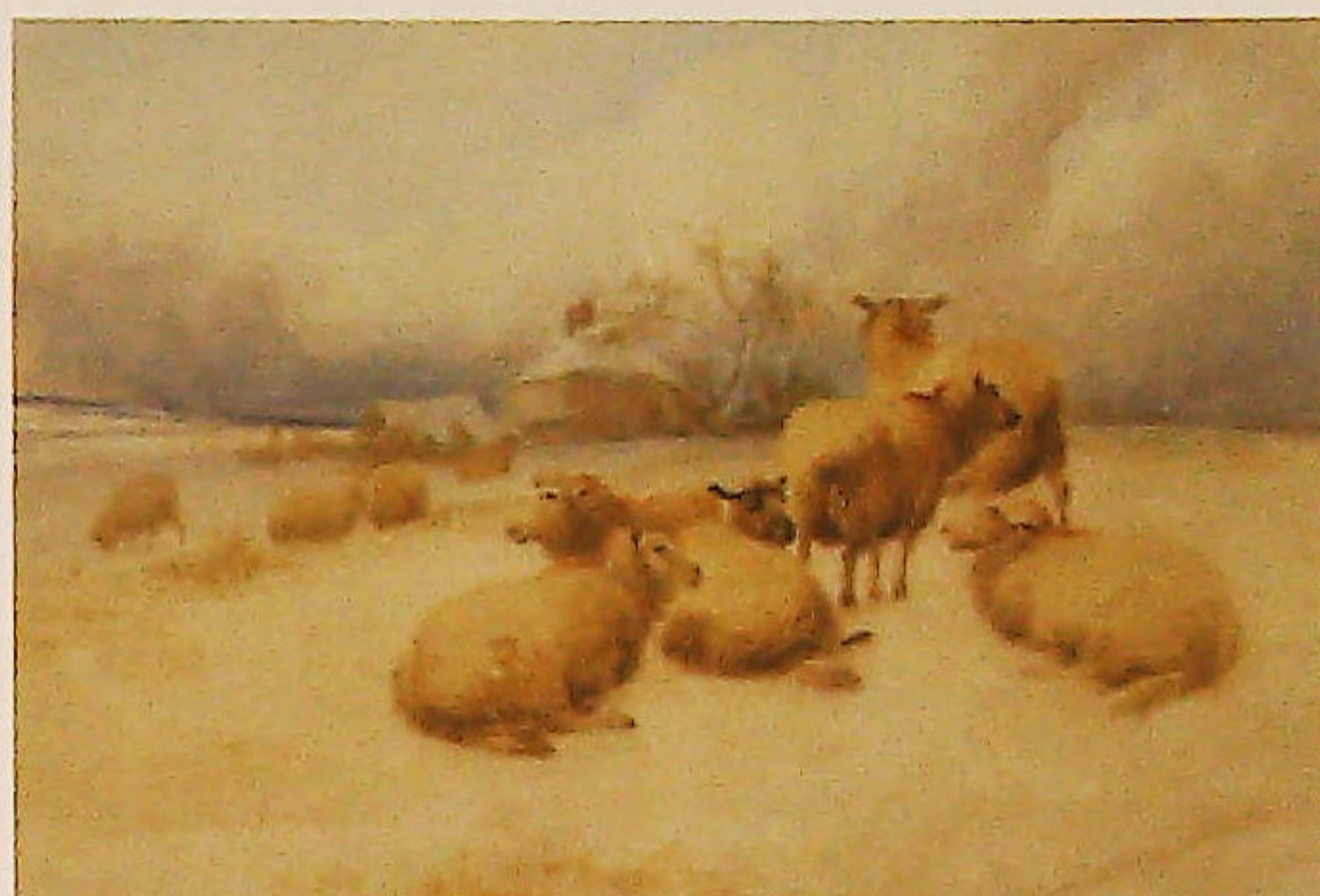
- ▲ 22.
Thomas Sidney Cooper (1803-1902).
Cattle in barn, watercolour, signed, 30.5cm x 24cm.
Provenance: Cheffins March 2009 Lot 507.
£600-800



- ▲ 24.
Thomas Sidney Cooper (1803-1902).
Longhorn cow and sheep in meadow, watercolour, signed, 14.5cm x 22.5cm.
Provenance: Bonhams Chester
£400-600



- ▲ 25.
Thomas Sidney Cooper (1803-1902).
Rural scenes, watercolour with highlight, three signed, 12cm x 15.5cm.
Provenance Bonhams 28th April 2009 Lot 283
£600-900



- ▲ 23.
Thomas Sidney Cooper (1803-1902).
Sheep in Winter (Sheep in the snow), watercolour, signed, 29cm x 43cm.
Label verso Malcolm Innes and Partners London.
See Westwood, Kenneth J Thomas Sidney Cooper His Life and Work D.1859.2 [age 294, plate 152, page 155.
£800-1200

26.
Cooper (Thomas Sidney).
Cattle groups from nature - 1839, published Ackermann, one volume.

27.
Cooper (Thomas Sidney).
Subjects of Cattle 1837, published Thomas McLean, one volume.

28.
Royal Academy Pictures
1895, 1897, 1903, three volumes.

29.
Cooper (Thomas Sidney).
Sketches From Nature, published Charles Tilt, one volume.

30.
Sartin (Stephen).
Thomas Sidney Cooper, published F Lewis, one volume
Westwood, Kenneth J His Life and Work volume I, Master of Lithography, published Wilson Kent (2).

31.
Westwood (Kenneth J).
Thomas Sidney Cooper His Life and Work, two volumes, published David Leathers, author's written dedication, volume I Master of Lithography and supplement, Early Drawings (4).



- ▲ 32.
Thomas Sidney Cooper (1803-1902).
A cow in a barn with chickens, watercolour, signed, 20.5cm x 27.5cm.
£300-500



- ▲ 33.
Eugene Joseph Verboeuckhoven (1798/99-1881).
Goats, pencil with highlight, signed and dated 1876, 31.5cm x 23cm.
£400-600

Lincoln Fine Art Sale



- ▲ 34.
Eugene Joseph Verboeuckhoven
(1788/89-1881).
Cattle and sheep, pencil with
highlight, signed and dated
1876?, 34.5cm x 49.5cm.
£500-800



- ▲ 37.
Edward Henry Bearn
(1844-?).
River landscape with cattle
and horse-drawn wagon,
signed and dated 1872,
51cm x 35cm.
£100-200



- ▲ 35.
18thC Dutch School.
Stable scene with figures, oil
on panel, 35cm x 40cm.
£100-200



- ▲ 38.
E Hovasa (?) (19thC).
Young girl startled by geese,
oil on canvas, indistinctly
signed and dated (18)75, and
inscribed verso, 23.5cm x 32cm.
£100-200



- ▲ 36.
19thC Dutch School.
Cobbler mending a young
girl's shoe, oil on canvas,
33cm x 24.5cm.
£50-100

39.
After George Armfield.
Two terriers, oil on canvas,
14.5cm x 21.5cm.
£50-80



- ▲ 40.
19thC Continental School.
Portrait of a dog, oil on board,
indistinctly signed,
21cm x 21cm.
£50-100



- ▲ 41.
Ernest Meissonnier (1815-1891).
Standing figure smoking a pipe, oil on board, signed, 17.5cm x 10.5cm.
£1200-1800



- ▲ 42.
19thC British School.
Country scenes - four seasons,
oil on canvas (4), 16cm x 16cm.
£100-200



- ▲ 43.
George Goodwin Kilburne (1839-1924).
Off to the hunt, watercolour,
signed 17.5cm x 22.5cm.
£200-400



▲ 44.
George Goodwin Kilburne (1839-1924).
The Unexpected Visitor - a kitchen interior, with a huntsman and a maid, watercolour, signed and titled verso, 12cm x 16cm.
£200-400



▲ 45.
19thC Dutch School.
Winter river scene, oil on board - a pair, 16cm x 24cm.
£100-150



▲ 46.
19thC British School.
Country river scene, oil on canvas, 19cm x 29cm.



▲ 47.
19thC British School.
Figure on horseback outside cottage, oil on canvas, 24cm x 34.5cm.
£50-100



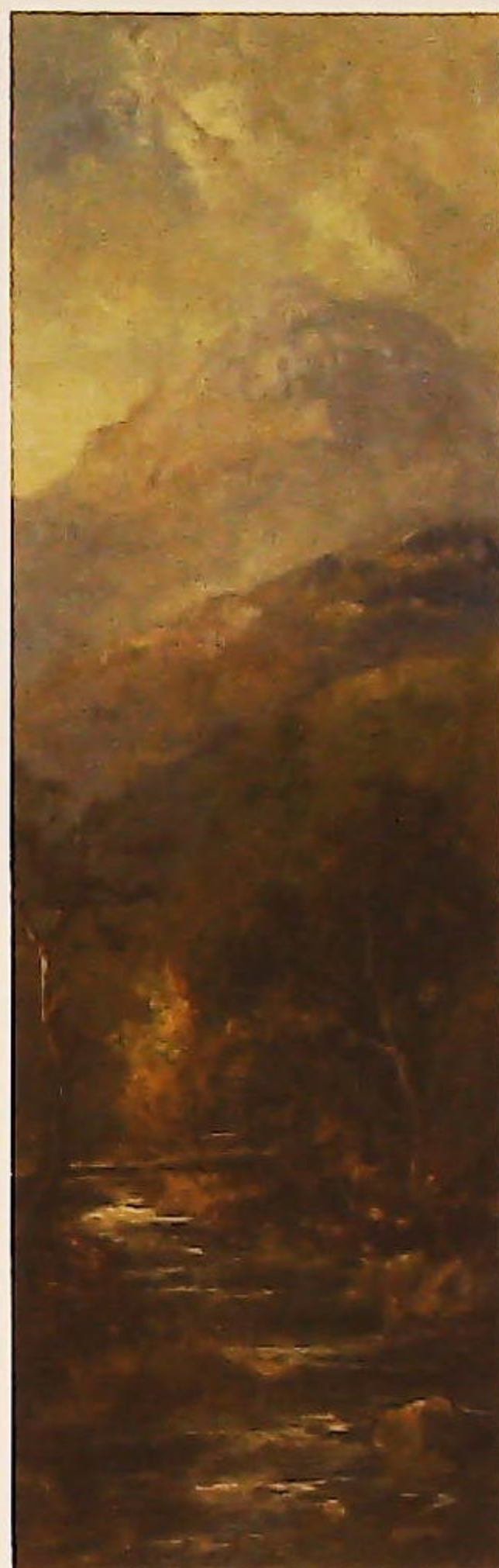
▲ 48.
19thC British School.
Dog with hare, oil on canvas, 29.5cm x 39.5cm.
£120-180



▲ 49.
Ann Maria Elisabeth Jerichau-Baumann (1819-1881).
Head and shoulders portrait of a woman, oil on board, signed and dated 1876, 24.5cm x 19.5cm.
£300-500



▲ 50.
Henry Thomas Dawson (act.1860-1896).
Near Furness, Lancashire, oil on board, signed, dated 1865, titled, 31.5cm x 47cm.
£200-300



▲ 51.
John Falconar Slater (1857-1937).
River scenes, oil on canvas - a pair, signed, 93cm x 32cm.
£100-200



▲ 52.
James Webb (1825-1895).
Fishing boats in heavy seas off a jetty, oil on canvas, label verso - Bonfiglioli Limited Nottingham, 29.5cm x 49.5cm.
£250-450



▲ 53.
David Cox (1809-1895).
Coastal scene with figures, oil on board, signed, 27.5cm x 35cm.
£50-150



▲ 54.
Louis Tesson (1820-1870).
Three figures cooking, watercolour, signed, 7.5cm x 11.5cm.
£50-80



▲ 55.
Maude Goodman (c.1860-1938).
Lady in fine costume, watercolour, signed, 19cm x 10.5cm.
£80-120

Lincoln Fine Art Sale



▲ 56.
19thC Continental School.
Clown Pierrot, oil on board,
29cm x 21.5cm.
£100-200



▲ 57.
19thC British School.
Head and shoulders portrait of
a young woman, oil on canvas,
40cm x 35cm.



▲ 58.
Joseph Paul (1804-1887).
Estuary scene, oil on canvas,
label verso Eastbourne Fine
Art, 24cm x 34.5cm.



▲ 59.
19thC British School.
Country landscape with
shepherd, oil on board,
9cm x 13cm.



▲ 60.
19thC British School.
Masted ships off coast, oil on
canvas, 31.5cm x 49cm.
£100-150



▲ 61.
19thC British School.
Three quarter length portrait
of a lady, oil on canvas,
109cm x 84cm.



▲ 62.
John Frederick Herring.
Horses in stable, oil on board,
signed, 24cm x 29.5cm.
£200-400



▲ 63.
George Earp (19th/20thC).
River landscape with cattle
and masted ship, oil on board,
28cm x 40cm.
£50-100



▲ 64.
George Earp (19th/20thC).
Landscape of driving cattle, oil
on board, 18cm x 21cm.
£100-150



▲ 65.
**Emile van Marche de
Lummen (1827-1890).**
Cattle in landscape, oil on
board, signed and dated 1881,
25cm x 31cm.
£200-300



▲ 66.
J Israels (19thC).
A Meagre Meal, oil on canvas,
signed, 35cm x 29.5cm.
£300-400



▲ 67.
**Henry Charles Fox
(1860-1925).**
On The Arun, watercolour,
signed and dated 1899, label
verso - auction, 37.5cm x 70.5cm.



▲ 68.
19thC British School.
Away at sea, watercolour,
indistinctly signed,
26cm x 37cm.



▲ 69.
Thomas Rowden (1842-1926).
River scene with cattle,
watercolour, signed and dated
(18)90, 16.5cm x 37.5cm.



▲ 70.
**Arthur John Strutt
(1819-1888).**
Fisher folk, watercolour, signed
and dated Nov 1837,
17.5cm x 20cm
£80-120



▲ 71.
19thC Continental School.
Venice scene, watercolour,
indistinctly signed,
16cm x 31cm.



▲ 72.
**Emmeline Deane
(c.1860-1944).**
Half length portrait of a girl,
miniature, 5cm x 5cm.
£200-300



▲ 73.
19thC British School.
Masted ship in coastal scene,
oil on porcelain plaque,
11.5cm x 11.5cm.



▲ 74.
19thC British School.
River landscape with figures,
oil on canvas, 41.5cm x 67cm.
£50-100



▲ 75.
Vincent Clare (1855-1930).
Basket of flowers, birds nest on
a mossy bank, oil on canvas,
signed, 30cm x 25cm.
£150-250



▲ 76.
19thC British School.
Portraits of a lady and
gentleman, oils on board, a
pair, 32cm x 26cm.
£50-100



▲ 77.
John Wallace (1841-1905).
Country landscape, cottage
and figure, oil on canvas,
signed, 24cm x 44.5cm.
£80-120



▲ 78.
19thC British School.
Figure with dog in cornfield,
oil on canvas, 22cm x 34cm.
£80-120



▲ 79.
19thC British School.
Country landscape with
figures fishing, oil on board,
29cm x 39cm.
£100-200



▲ 80.
19thC British School.
Country scene with cottages
and figures, oil on canvas,
29cm x 38cm.
£100-200



▲ 81.
W Richards (19thC).
Figure in river landscape, oil
on canvas, signed,
40.5cm x 61cm.



▲ 82.
George Turner (1843-1910).
Moorside Dales Derbyshire, oil
on board, signed, titled and
dated 1899 verso,
22.5cm x 37.5cm.
£400-600



▲ 83.
19thC Continental School.
Fruit seller with young maiden
counting coins, oil on canvas,
45cm x 35cm.
£100-150



▲ 84.
After Fussell.
Ruins of the Episcopal Palace
at Halling in Kent with cattle
watering and another with two
figures fishing in river landscape,
en grisaille watercolours, pair
15cm x 15cm.



▲ 85.
19thC Dutch School.
Masted ships in coastal scene,
oil on canvas, 22.5cm x 29cm.



▲ 86.
**Henry Charles Wallett
(19thC).**
Hens in rural landscape, oil on
canvas, a pair, signed,
22cm x 29cm.



▲ 87.
**Edwin St John
(act. 1880-1890).**
Alpine landscape with cottage
and figures, watercolour,
signed, 47cm x 70cm.
£100-200

Lincoln Fine Art Sale



▲ 88.
Colin Graeme (1858-1910).
Hounds in a rocky stream, oil
on canvas, signed and (18)91,
49cm x 74.5cm.
£500-800



▲ 89.
Colin Graeme (1858-1910).
Packhorse with pointers
outside, a thatched croft, oil on
canvas, signed and dated
(18)91, 49.5cm x 75cm.
£500-800



▲ 90.
After Rembrandt.
Head and shoulders portrait,
oil on canvas, 68.5cm x 51cm.
£200-300



▲ 91.
**Walter Heath Williams
(1835-1906).**
Figures in country scenes, oil
on canvas, a pair, initialled,
23.5cm x 19cm.
£300-500



▲ 92.
19thC Continental School.
Young Couple - The Tryst, oil
on board, 28cm x 23.5cm.
£200-300



▲ 93.
Linnie Watt (act. 1875-1908).
October on the Downs, oil on
board, initialled and titled,
26.5cm x 45.5cm.
£150-250



▲ 94.
Linnie Watt (act. 1875-1908).
Continental village, figures on
a bridge, oil on canvas, signed,
27cm x 37.5cm.
£150-250



▲ 96.
Thomas Creswick (1811-1869).
River landscape with stepping stones, oil on board, 44.5cm x 60.5cm.
£1000-1500



▲ 95.
**Thomas Bush Hardy
(1842-1897).**
Masted fishing smack in
choppy seas, coastal scenes,
watercolour, signed and
indistinctly dated, 17cm x 25cm.



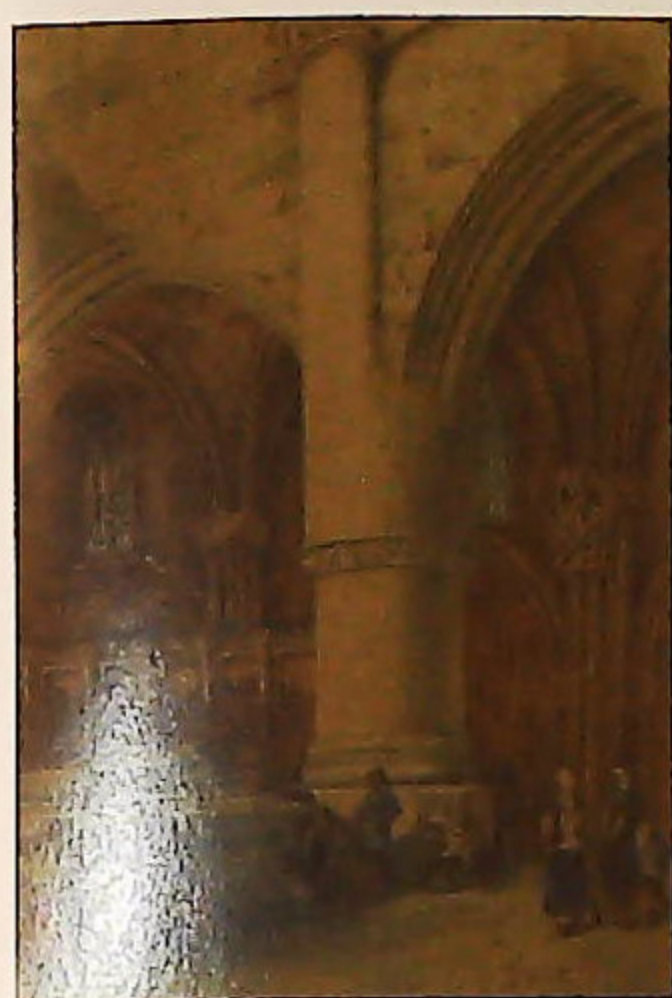
▲ 97.
A Bratton (19thC).
Terrier dog, oil on board,
signed, 16cm x 10.5cm.



▲ 98.
18thC French School.
Comic D'Artois, oil on board,
indistinctly signed and number
248/297, 31cm x 23.5cm.



▲ 99.
Provaggi (19thC).
Chess players, watercolour,
signed, 26cm x 21.5cm.
£100-200



▲ 100.
A Cordenet (19thC).
Cathedral interior, watercolour, signed and dated (18)77, 29.5cm x 19.5cm.
£200-300



▲ 101.
Walter G Reynolds (act. 1859-1888).
Bunyans Cottage, watercolour, inscribed and titled verso, 17.5cm x 25cm.



▲ 102.
Richard Beavis (1824-1896).
River scene with three horses, oil on canvas, signed and dated 1889, 36.5cm x 51cm.



▲ 103.
J Bale (19thC).
Fishing smack in coastal scenes, oil on canvas, a pair, signed, 39.5cm x 60cm.
£200-400



▲ 104.
19thC British School.
Sheep and two lambs in highland landscape, oil on canvas, 58.5cm x 89.5cm.
£200-400



▲ 105.
Edwin Long Meadows (act. 1854-1905).
Ashwood Dale New Buxton Derbyshire, oil on board, inscribed and titled verso, 49.5cm x 75cm.
£150-250



▲ 106.
20thC British School
Fishing smacks and coastal scenes, watercolour, four, signed and dated 1911, 17cm x 52.5cm.
£200-400



▲ 107.
Attributed to John Frederick Herring (1815-1904).
Farmyard with horse, ink, 8cm x 8cm.



▲ 108.
C.W.F. (19thC).
Warwick, watercolour, initialled and titled, 19cm x 27cm.



▲ 109.
19thC British School.
Half length Quaker portraits, mother and daughter, oil on canvas, 48cm x 35.5cm.
£200-300

110. Spare Lot



▲ 111
William Baines.
Fishing boat and coastal scene, oil on canvas, signed and dated 1898, 14cm x 23cm.



▲ 112.
Tom Rowden.
Bigbury Bay and Borough Island, Doe Tor Steam Nr Bridestone, watercolour - pair, signed and titled, 20.5cm x 39.5cm.

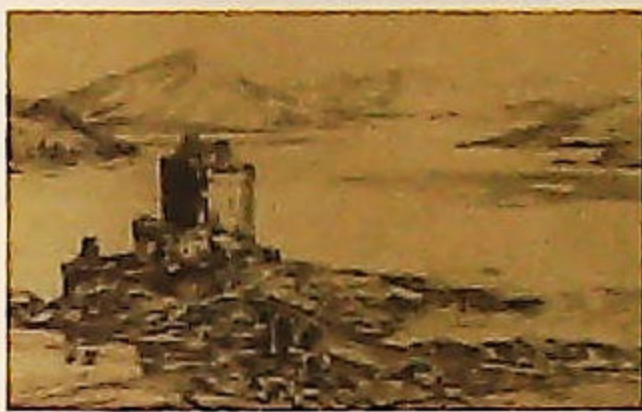


▲ 113.
Rowland Langmaid (1897-1956).
City square, London, artist signed etching, 15.5cm x 20.5cm.



▲ 114.
E.H Groome.
Looe Harbour, artist signed and titled etching, 16.5cm x 24cm.

Lincoln Fine Art Sale



▲ 115.
E.H Groome.
Edeau Druan Castle and Skye,
artist signed and titled etching,
16.5cm x 24cm.



▲ 116.
After Charles Baxter.
Three Maidens, colour
mezzotint print, 50cm x 43cm.
£30-40



▲ 117.
Andrew Fairbairn Affleck
(1874/75-1935/36).
Venice scene, artist signed
etching, 29.5cm x 22cm.



▲ 118.
William Rawson
(10th/20thC).
Windmill, monochrome print,
signed under mount,
23.5cm x 17cm.
£50-80



▲ 119.
Charles O'Connor
(b.1943).
Uninvited, artist signed and
titled etching, 9cm x 10.5cm.
£30-50



▲ 120.
Jenson (19th/20thC).
Tiger in tree, artist signed print
dated 1918, 27cm x 36cm.



▲ 121.
Percy Robertson.
Hyde Park Corner, artist
signed etching, titled verso,
20cm x 27cm.



▲ 122.
After J F Herring.
Fores's stable scenes -
Thorough Breds plate 3, a
coloured print, 64cm x 90cm.
£50-80



▲ 123.
After J F Herring.
The British Stud - Barbelle, Bay
Middleton plate 3, a coloured
print, 59cm x 88cm.
£30-50



▲ 124.
After J F Herring.
Sir Tatton Skykes, Winner of
the Doncaster Great St Leger
1846, a coloured print,
46cm x 56cm.



▲ 126.
Robin Wheeldon (b.1945).
Moneys Mill, Sleaford, artist
signed limited edition
coloured print 723/950,
32.5cm x 44cm., and another
The Blacksmith.



▲ 127.
Mark Huskinson (b. 1935).
Cocks Only, artist signed
coloured print, 19cm x 16cm.



▲ 125.
Peter De Wint (1784-1849).
Newark bridge and castle, watercolour, purchased Sotheby's July
1993, 50cm x 77.5cm.
£2000-3000



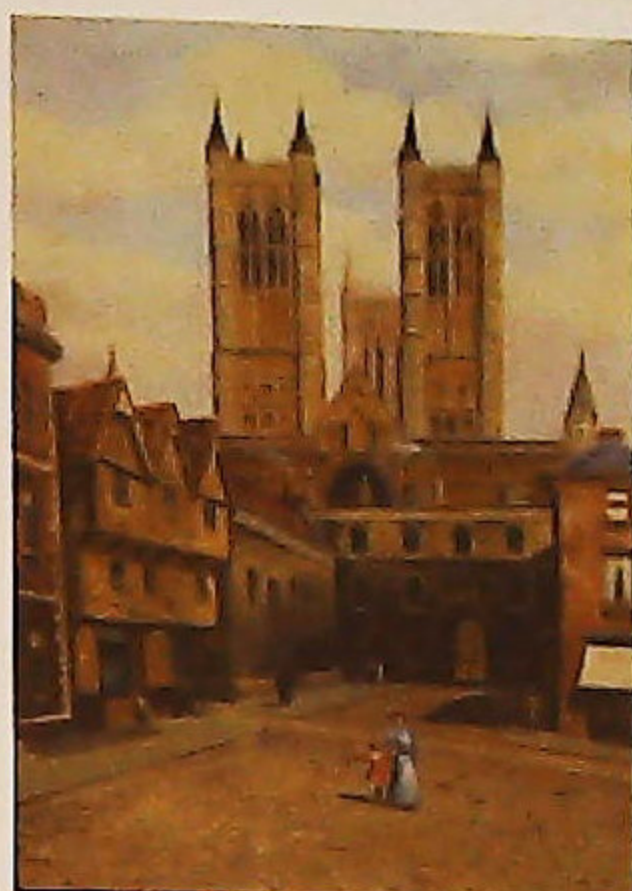
▲ 128.
Alfred Ernest White (1873-1953).
Lions Statue; Lincoln's Arboretum, oil on canvas, signed and dated 1906, 37.5cm x 27.5cm.
See Fanthorpe, Jean- Alfred Ernest West: Truly a Lincolnshire Artist- page 45



▲ 129.
Alfred Ernest White (1873-1953).
Lincoln's Arboretum, oil on canvas, signed and dated 1906, 37cm x 27.5cm.



▲ 130.
Alfred Ernest White (1873-1953).
High Bridge Lincoln, oil on panel, 28.5cm x 20cm.



▲ 131.
Alfred Ernest White (1873-1953).
Castle Square Lincoln, oil on canvas, signed and dated 1905, 58.5cm x 43cm.
See Fanthorpe, Jean- Alfred Ernest West: Truly a Lincolnshire Artist- page 58.



▲ 132.
William Bartol Thomas (1877-1947).
The Witham. Boston Lincolnshire, watercolour, signed and dated 1902, 46cm x 30cm.



▲ 133.
William Bartol Thomas (1877-1947).
Frieston Shore, watercolour, signed and titled verso, 24cm x 30.5cm.
£150-250



▲ 134.
William Bartol Thomas (1877-1947).
Boston, Lincolnshire, watercolour, signed, 46cm x 32cm.
£80-120



▲ 135.
John Trickett (b.1953).
Gun Dog, artist signed limited edition print, 3/850, 41cm x 49cm.



▲ 136.
David Waller (b.1945).
Black Labrador, oil on canvas, signed and dated 1991, 49.5cm x 59.5cm.



▲ 137.
David Waller (b.1945).
Tara III, oil on canvas, signed titled and dated Dec 2004, 49.5cm x 59.5cm.



▲ 138.
David Weston (1935-2011).
Country landscape with horse and cart, watercolour, signed, 15.5cm x 24cm.



▲ 139.
David Weston (1935-2011).
'Blue Peter' in York Roundhouse, oil on canvas, signed, dated (19)69 and title verso, artist label verso, 75cm x 100.5cm.



▲ 140.
David Weston (1935-2011).
West Bridge Leicester, oil on canvas, signed and date 1977, 49.5cm x 75cm.



▲ 140A.
David Weston (1935-2011).
The Drama of Noerofjorden Norway, watercolour, signed, and titled and dated 2002 verso, artist label verso, 28cm x 24cm.

Lincoln Fine Art Sale



▲ 141.
Oscar Matthisen (20thC).
Four wheeled cart, horses and figure, oil on canvas, monogrammed and dated 1937, 48.5cm x 63.5cm.
£150-250



▲ 142.
Otto Haslimd (1842-1917).
Cows in pasture with thatched cottage, oil on canvas, signed and dated 1911, 48.5cm x 58.5cm.
£300-500



▲ 143.
Kristian Zahrtmann (1843-1917).
A priest kneeling in prayer within a church, oil on canvas, monogrammed and dated 1907, 52.5cm x 64.5cm.
£300-500



▲ 144.
Christian Krough (19th/20thC).
Gerda Christensen- half length portrait, oil on canvas, signed, 64cm x 51cm.
£200-300



▲ 145.
20thC Continental School.
Street scene, oil on canvas, indistinctly signed, 49cm x 39cm.
£50-100



▲ 146.
Alois Lecoque (1891-1981).
Montmartre, oil on canvas, signed, 49.5cm x 59.5cm.
£200-300



▲ 147.
Sylvester Wildt (19th/20thC).
A drawing room- still life study, oil on canvas, signed and dated 1929, 31.5cm x 26.5cm.
£50-100



▲ 148.
Johan Marik Bredsdorff (1845-1928).
Highland landscape, oil on canvas, signed and dated 1873, 19.5cm x 34.5cm.
£150-250



▲ 149.
Friedel Colm (20thC).
Winter river scene, oil on canvas, signed, 47cm x 57.5cm.
£80-120



▲ 150.
Adolph Alfred Larsen (1856-1942).
Cow grazing in open landscape, oil on canvas, signed and dated 1928, 22cm x 34cm.
£200-300



▲ 151.
Ramanayche? (20thC).
Asian scene with cart and horses, oil on board - a pair, indistinctly signed, 24cm x 30cm.
£100-200



▲ 152.
Andreas Peter Madsen (1822-1911).
Cattle and sheep with children on a rocky hillside, oil on canvas, 29cm x 35.5cm.
£500-800



▲ 153.
E. Coulange-Lautree (20thC).
Coastal scene with figures, oil on canvas, signed, 48cm x 72cm.
£300-400



▲ 154.
Louise Ravn Hansen (1849-1909).
Harvest field by a stream with wheat sheaves, oil on canvas, initialled, indistinctly inscribed verso, 24cm x 35cm.
£100-200



▲ 155.
19th Continental School.
Seashore, oil on board, dated (18)96, label verso
Pelter/Sands Fine Paintings, 18cm x 25cm.
£150-250



▲ 156.
Johan Rohde.
Figures on a beach by a boat,
oil on board, signed,
35cm x 38cm.
£200-300



▲ 157.
Knud Agger (1895-1973).
Woodland track between
conifers, oil on canvas, signed,
31cm x 30cm.
£200-300



▲ 158.
Hans Agersnap (1857-1925).
Country landscape with
figures and thatched cottage,
oil on canvas, signed,
67cm x 96.5cm.
£400-600



▲ 159.
Karl Fuchs (1872-1968).
Berne, oil on board, signed and
titled verso, 23cm x 31cm.
£150-250



▲ 160.
Thorald Nis (1842-1905).
Fensmark, oil on canvas,
signed, titled and dated 1888,
31cm x 42cm.
£300-500



▲ 161.
Theodorus Van Dorscht (1910-1989).
Paris, oil on canvas, signed,
90cm x 59.5cm, label verso
Marlow Galleries.
£200-300



▲ 162.
19thC School.
Rocky country landscape with
figure and cattle, oil on canvas,
signed and dated (18)73,
32cm x 43.5cm.



▲ 163.
20thC School.
Woodland scene, oil on board,
signed, 40cm x 29.5cm.



▲ 164.
Follower of Thomas Bush Hardy.
Masted ships at sea, oil on
canvas, signed, bears
signature, 49.5cm x 39.5cm.



▲ 165.
Adock.
Meet at the Reindeer, oil on
board, signed and dated 71,
36cm x 43.5cm.



▲ 166.
J.P von Vildenrad (1861-1904).
Rocky beach with seagulls and
shipping in the distance, oil on
canvas, signed and dated 1899,
38.5cm x 77.5cm.
£200-400



▲ 167.
20thC School.
Landscape with farm
buildings, oil on board, signed
and dated, 57cm x 66.5cm.



▲ 168.
Knud Agger (1865-1973).
Coastal scene, oil on canvas,
signed and dated 1916,
50cm x 66.5cm.
£200-300



▲ 169.
Nils Penderson Mols (1859-1921).
A cow herder and three cows
returning home in an
expansive landscape, oil on
canvas, signed and dated
(19)10, 94cm x 135cm. Artist
label verso.
£600-900



▲ 170.
Siegfried Charoux (1896-1967).
Mountain lake, watercolour,
signed and dated 1939,
28cm x 47.5cm.
£50-100

Lincoln Fine Art Sale



▲ 171.
W. Wasdell Trickett (19th/20thC).
Lulu II, oil on canvas, signed, titled and dated 1938, 39.5cm x 49.5cm.



▲ 172.
F.P. Di Beopinato (20thC).
Coastal scene with sailing boats, oil on board, signed, 43.5cm x 58cm.



▲ 173.
F. Vincent ? (20thC).
Floral study, oil on board, 14.5cm x 21.5 cm.



▲ 174.
Leendert De Vogel (1909-1974).
Continental street scene, oil on canvas, signed, 59cm x 60cm. £200-300



▲ 175.
Continental School.
Harbour scene with masted ships, oil on canvas, 45.5cm x 58cm.



▲ 176.
G Boulengel (20thC).
Venice, watercolour, signed, 32cm x 48.5cm. £200-300



▲ 177 (20thC).
M.H. Coats.
Mountain stream, oil on board, signed, 24.5cm x 34.5cm. £50-80



▲ 178.
H Mackey (19/20C).
Figure looking out to sea, oil on canvas, signed, 30cm x 50cm. £30-50



▲ 179.
A. Gianni (19th/20thC).
Naples flower girl, oil on canvas, signed, 61cm x 45cm. £300-400



▲ 180.
Continental School.
Canal scene with figures, oil on canvas, 53.5cm x 43.5cm. £200-300



▲ 181.
19thC British School.
Horse and jockey - Florizel, Victor Wild, oil on canvas, a pair, initialled and titled, 24cm x 34cm. £200-400



▲ 185.
Eliseo Meifren Y Roig (1859-1940).
Beach scene with figures and a stranded boat, oil on canvas, signed, 60cm x 92.5cm. Provenance- Phillipe 16 June 1998 lot 216. £2000-3000



▲ 182.
Continental School.
Fishing boats in harbour, oil on canvas, indistinctly signed, 49cm x 69cm.



▲ 183.
La Pira (19th/20thC).
Naples, gouache, signed, 17.5cm x 25.5cm. £200-300



▲ 186.
John Linnell (1792-1882).
Timber wagon, Shepherd, oil on canvas - pair, signed, 18cm x 23cm.
£1000-1500



▲ 184.
19thC British School.
Maiden seated holding flowers, watercolour, 33cm x 24cm.
£300-500



▲ 187.
Charles Ernest Butler (1864- 1918/33).
Seascape, oil on board, signed, 15.5cm x 23cm.
Label verso Branscombe Galleries, The Campden Gallery.
£200-300



▲ 188.
British School.
Country cottage scenes, oil on board - pair, 16.5cm x 24cm.
£300-400



▲ 189.
Maude G McIlroy (act. 1915-1923).
Study of four horses, watercolour, signed and dated 1914, 24cm x 34cm.
£100-150



▲ 190.
Alexander (20thC).
Nude study, charcoal drawing, signed and dated (19)27, 46cm x 33.5cm.
£100-200



▲ 191.
J Denny (19th/20thC).
River landscape, watercolour, signed, 18cm x 27cm.
£30-50



▲ 192.
Continental School.
Volcano and coastal views, gouache - four, inscribed and dated circa 1839, 8.5cm x 12cm.
£200-300



▲ 193.
Continental School.
Coastal scene, watercolour, indistinctly signed, 25cm x 37cm.
£300-500



▲ 194.
Leendert De Vogel (1909-1974).
Continental street market scene, oil on canvas, signed, 60.5cm x 91cm.
£200-300



▲ 195.
20thC British School.
Bampton Cliffs from near Tharmwyke bay Hamborough, oil on board, inscribed verso, 13cm x 28cm.



▲ 196.
Continental School.
Lake scene, oil on board, inscribed verso, 21cm x 29cm.
£100-200



▲ 197.
19thC Dutch School.
Winter river scene, oil on canvas, bears signature Louis Apol, 35cm x 53cm.
£200-300



▲ 198.
Renuccio Renucci (1880-1947).
Fisherman, oil on board, signed, 29cm x 43.5cm.
£300-400

Lincoln Fine Art Sale



▲ 199.
John Coulson (19th/20thC).
Egyptian landscape, oil on board, a pair, signed, 24.5cm x 49cm.
£200-300



▲ 200.
Continental School.
Lake and mountain scene, oil on canvas, 21cm x 41cm.
£50-100



▲ 201.
Noel Denholm Davis (1876-1950).
Portrait of a young woman, oil on canvas, signed, 60cm x 50cm.
£500-800



▲ 202.
John Laviers Wheatley (1892-1955).
Figure in coastal scene, oil on canvas, signed, 34cm x 45cm.
£100-200



▲ 203.
Max Gubler (1898-1973).
River landscape, oil on canvas, signed and dated (19)30, 32.5cm x 42cm.
Label verso Frazz Brunner.
£800-1200



▲ 204.
Harm Henrick Kamerlingh Onnes (1893-1985).
Garden scene, oil on board, initialled and dates (19)52, 29cm x 23cm.
£300-500



▲ 205.
A. Spooner (19th/20thC).
North Hill- Covelly, oil on canvas, inscribed verso, 60cm x 44.5cm.



▲ 206.
John R. Reid.
Holy Island from Arran, oil on canvas, signed, inscribed and dated September 1910 verso, 19cm x 27cm.
£300-400



▲ 207.
British School.
Grouse, drawing, indistinctly signed, 27.5cm x 19cm.



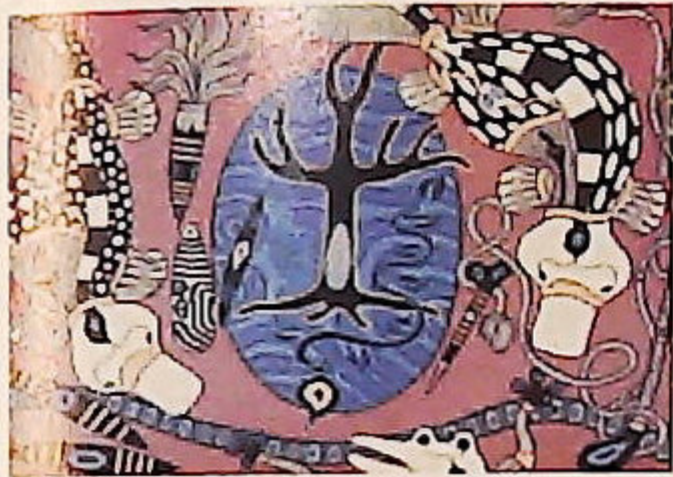
▲ 208.
Edward Bawden (1903-1989).
Christmas Cactus, watercolour, label verso The Fine Art Society London Royal Academy Summer Exhibition 1989, 48cm x 63.5cm.
£1500-2500



▲ 209.
Edward Bawden (1903-1989).
Little Sampford Church near Great Bardfield, watercolour, signed and dated 1955, label verso The Fine Art Society London, exhibited Edward Bawden Centenary Exhibition 2003, 45cm x 57cm.
£3500-4500



▲ 210.
Richard Bawden (b.1936).
Norodevichy Convent
Moscow, artist signed coloured
etching, numbered 8/85,
49cm x 38cm.
£100-150



▲ 211.
Graham Rennie Biggibilla (20thC).
Aboriginal, artist signed
limited edition coloured print
323/600 dated (19)96,
37cm x 48cm.



▲ 212.
John Brunson (1933-2014).
Dorset Summer, artist signed
coloured etching 92/150,
51cm x 71cm.



▲ 213.
Rosetta Walker (20thC).
Floral still life, watercolour,
signed, 35.5cm x 28.5cm.



▲ 214.
Laurence Stephen Lowry (1887-1976).
The Pond, artist signed coloured print, 46cm x 58.5cm.
£1500-2500



▲ 215.
Tom Dobson (1910-1991).
Street scene, minerals, sweets,
ices, artist signed coloured
print, 37.5cm x 46.5cm.



▲ 216.
Bob Dylan (b.1941).
Favela Villa Broncos - The
Brazil Series, artist signed
limited edition giclee print
40/295, bears certificate of
authenticity verso, 52cm x 67cm.
£500-800



► 218.
Bob Dylan (b.1941).
Ranchers - The Brazil Series,
artist signed limited edition
giclee print 40/295, bears
certificate of authenticity verso,
and series brochure, 76cm x 65cm.
£500-800



▲ 219.
William Russell Flint (1880-1969).
Three groups, Viviers, Balance,
artist signed coloured print (2),
47.5cm x 67.5cm.



▲ 220.
Jeanette Lassen (1924-2008).
First to Bloom, acrylic on
canvas, signed, titled and
dated 2004 verso, artist
brochure verso, 59cm x 49.5cm.
£200-400



▲ 221.
20thC Continental School.
Floral still life, oil on canvas,
60cm x 52.5cm.

Lincoln Fine Art Sale



▲ 222.
Jerzy Marck (1925-2014).
Triangle, oil on canvas, signed,
titled, dated Edinburgh 1985-
1987), 54cm x 49cm.
£300-500



▲ 223.
Nicholas (20thC).
Monkey and fruit, oil on
canvas, signed, 39cm x 29.5cm.



▲ 224.
F Treunol (20thC).
Kittens playing, oil on canvas,
signed, 40cm x 59cm.
£60-90



▲ 225.
Andre Vignoles (1920-2017).
Champ de Ble, oil on canvas,
signed, dated (19)57, titled
verso, label verso Arthur Tooth
and Sons Ltd London,
38.5cm x 78.5cm.
£300-500



▲ 226.
Andre Vignoles (1920-2017).
Vase des fleurs, oil on canvas,
signed, dated (19)60, titled
verso, label verso Arthur Tooth
and Sons Ltd London,
64cm x 44.5cm.
£300-500



▲ 227.
P Fortunato (20thC).
Apple, vase, and curtain still
life, oil on canvas,
59cm x 79.5cm.
£800-1200



▲ 228.
P Fortunato (20thC).
Shell, books and flower still
life, oil on canvas,
59cm x 79.5cm.
£800-1200



▲ 229.
P Fortunato (20thC).
Book, mandolin and river still
life, oil on canvas,
59cm x 79.5cm.
£800-1200



▲ 230.
Nodrik (20thC).
Vases still life, oil on canvas,
signed, 29.5cm x 39.5cm.



▲ 231.
Nydia Lozano (b.1947).
Female portrait, oil on board,
signed, exhibition catalogue
1987 verso, 38.5cm x 25cm.
£100-200



▲ 232.
Johannes Hendrick Eversen (1906-1995).
The Quantock Hills from
Wembdon, oil on board,
signed and dated 19(50), titled
verso, 17cm x 23cm.
Label verso- The Fine Art
Society Ltd London.
£100-200



▲ 233.
20thC School.
Corn Dolly, watercolour,
50cm x 43cm.



▲ 234.
Groffe (20thC).
Fishing boats - coastal scene,
oil on canvas, signed,
28cm x 58cm.
£30-50



▲ 235.
Groffe (20thC).
Fishing boat - coastal scene, oil
on canvas, signed, 28cm x 58cm.
£30-50



▲ 236.
20thC Continental School.
Venice canal scene, oil on
canvas, indistinctly signed,
48cm x 39cm.
£30-50



▲ 237.
Horbins (20thC).
Fruit still life, oil on canvas,
signed, 49.5cm x 59cm.
£30-50



▲ 238.
Hopmans (20thC).
Flower market square, oil on
canvas, signed and titled
verso, 39cm x 79cm.
£30-50

239 Spare Lot



▲ 240.
20thC Continental School.
Dutch canal scene, oil on
canvas, 59cm x 28.5cm.
£30-50



▲ 241.
20thC Continental School.
Woodland coastal scene, oil on
canvas, indistinctly signed,
59cm x 89cm.
£30-50



▲ 242.
20thC Continental School.
Portrait of a young child, oil
on canvas, 59cm x 48.5cm.
£30-50



▲ 243.
Koros (20thC).
Motor racing cars, oil on
canvas, signed, 58.5cm x 89cm.
£30-50



▲ 244.
20thC Continental School.
Italian canal scene, oil on
canvas, 59cm x 89cm.
£30-50



▲ 245.
Ruffoni (20thC).
Autumn river scene, oil on
canvas, signed, 59cm x 49cm.
£30-50



▲ 246.
20thC Continental School.
City river scene, oil on canvas,
39cm x 78.5cm.
£30-50



▲ 247.
20thC Continental School.
Flower sellers - city view, oil
on canvas, 34cm x 99cm.
£50-80



▲ 248.
V D Estinson (20thC).
Fishing boats, oil on canvas,
signed, 39cm x 79cm.
£30-50



▲ 249.
Farquharson (?) (20thC).
Flower market, oil on canvas,
indistinctly signed,
38cm x 78cm.
£80-120



▲ 250.
20thC Continental School.
Winter river scene, oil on
panel, 19cm x 24cm, and
another similar.
£30-50



▲ 251.
20thC Continental School.
Portrait of a gentleman, oil on
canvas, 30cm x 25cm.
£30-50



▲ 252.
N Schiffrers (20thC).
City square, oil on canvas,
signed, 39cm x 89cm.
£50-80



▲ 253.
20thC Continental School.
Paris river scene, oil on canvas,
38.5cm x 49cm.
£30-50

Lincoln Fine Art Sale



▲ 254.
20thC Continental School.
Dutch river scene, oil on
canvas, 48cm x 39cm.
£30-50



▲ 255.
C Peceno (?) (20thC).
Paris scene, oil on canvas,
48.5cm x 38.5cm.
£30-50



▲ 256.
C Peceno (?) (20thC).
Paris scene, oil on canvas,
48.5cm x 38.5cm.
£30-50



▲ 257.
C Peceno (?) (20thC).
Paris scene, oil on canvas,
48.5cm x 38.5cm.
£30-50



▲ 258.
C Peceno (?) (20thC).
Paris scene, oil on canvas,
48.5cm x 38.5cm.
£30-50



▲ 259.
C Vandewakk (20thC).
Horses and cart in country
landscape, oil on canvas,
signed, 59.5cm x 90cm.



▲ 260.
D Brie (?) (20thC).
Winter scenes, oil on canvas - a
pair, indistinctly signed,
19cm x 24cm.
£30-50



▲ 261.
E Dyer (?) (20thC).
Winter river scene, oil on
panel, signed, 16cm x 22cm.
£30-50



▲ 262.
R Rosini (20thC).
Floral still life, oil on canvas,
signed, 24cm x 19cm.
£30-50



▲ 263.
Pieter Cornelis
Steenhouwer (1896-1972).
Continental Street Scene, oil on
panel, signed, 38.5cm x 28.5cm.
£50-100

266 Spare Lot



▲ 265.
H Ward (20thC).
Continental coastal scene, oil
on board, signed, 19.5cm x 24cm.



▲ 266.
Innes Fripp (1867-1963).
Country river scene, horse and
haycart, oil on canvas, signed
75cm x 100cm.
£100-200



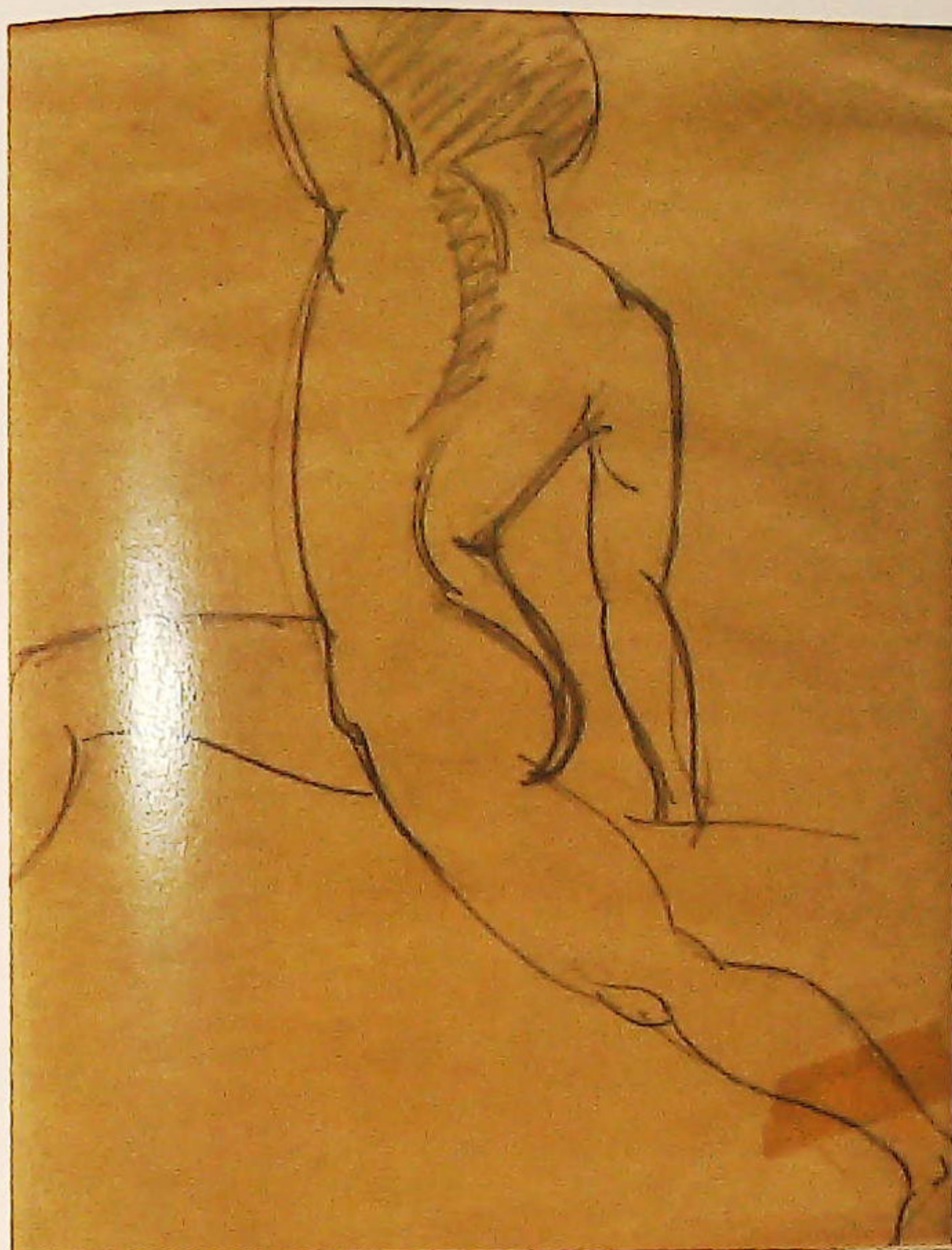
▲ 267.
Continental School.
Three cherubs, oil on canvas,
64cm x 82cm.
£300-500



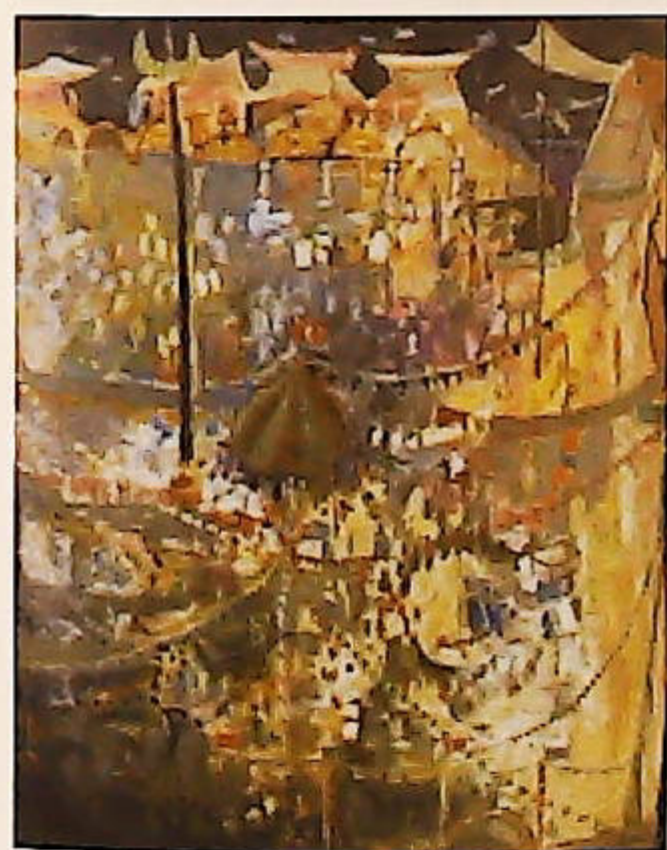
▲ 268.
Vincent Selby (1919-2004).
River and bridge, oil on board,
signed, 14cm x 18cm.
£60-90



▲ 269.
Vincent Selby (1919-2004).
Country cottage, oil on board,
signed, 14cm x 18cm.
£60-90



▲ 270.
Percy Wyndham Lewis (1882-1957).
Figure study, pencil, 27cm x 22cm.
£1000-1500



▲ 271.
T Ahmed (20thC).
Turkish funfair, watercolour, signed, 75cm x 52cm.
£150-250



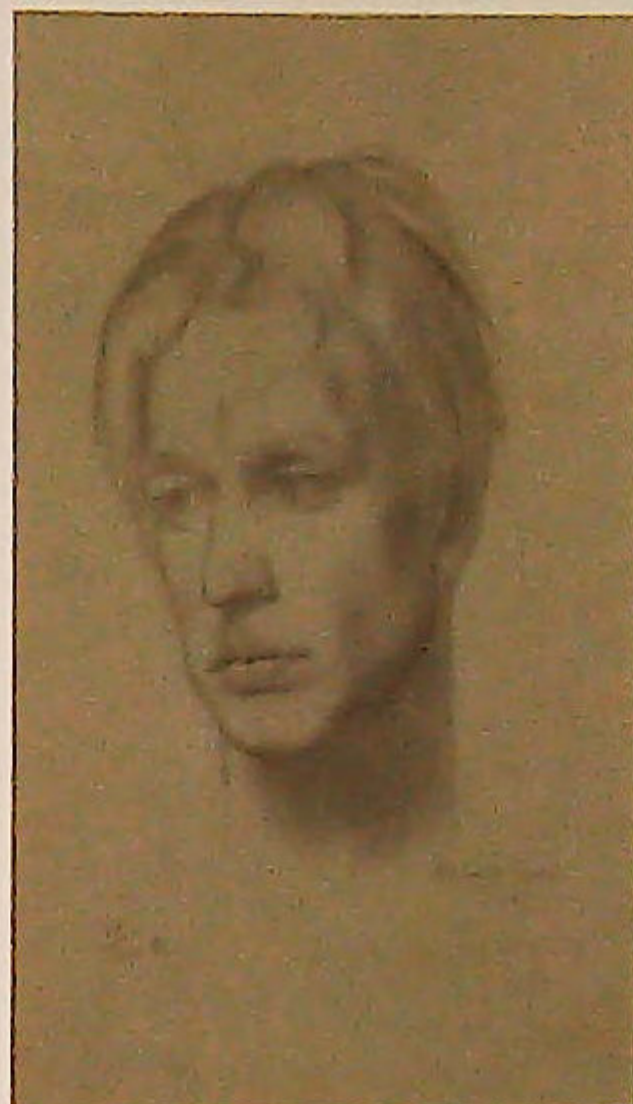
▲ 272.
John Eveleigh (b.1926).
Beach scene with figures (Folkestone), oil on board, signed and dated (19)57, 15cm x 24.5cm.
£50-80



▲ 273.
Kenneth Martin (1905-1984).
Berkshire landscape, oil on board, label verso Ernest Brown and Phillips, Leicester Galleries, 24.5cm x 34.5cm.
£200-300



▲ 274.
H.H. (20thC).
Sailing barges at Maldon, oil on board, 45cm x 60cm.



▲ 275.
Robert Lyon (1894-1978).
Portrait of Henry Moore 1923, artist signed limited edition print 19/220, 32cm x 22.5cm.
£200-400

276
Heim Falik (?/20thC).
Farm cottage, watercolour, indistinctly signed, 35cm x 50cm.

277
Heim Falik (?/20thC).
Farm building, watercolour, indistinctly signed, titled and dated (19)71, 39.5cm x 53cm.



▲ 278
20th Continental School.
Kittens in a basket, oil on canvas, indistinctly signed, 28.5cm x 38.5cm.
£200-300.

279
Thomas Kerkham (20thC).
Floral study, oil on board, signed, 48cm x 38cm.
Label verso- Paris salon 1964- James Boulet and Sons

280
John B? (20thC).
Beach scene, oil, indistinctly signed, 23cm x 20.5cm.

281
John B? (20thC).
Landscape, oil, indistinctly signed, 28cm x 24cm.

282
George Frederick Arthur Belcher (1875-1948).
"Can you let me ..." drawing, signed and titled, 42cm x 33cm.

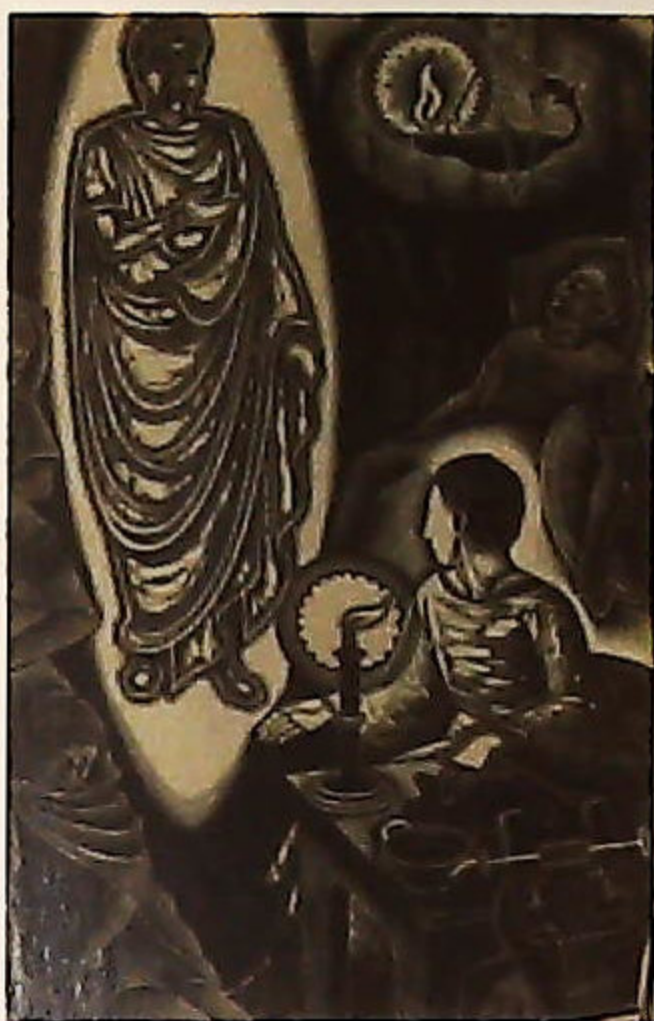
283
George Frederick Arthur Belcher (1875-1948).
"I hear you've bin ..." drawing, signed and titled, 42cm x 29.5cm.

284
20thC British School.
Fruit still life, oil on canvas, 29.5cm x 37cm.
£40-60



▲ 286
Raymond Hawthorn (1917-1997).
Female nude, pencil, signed and dated 1945, 33.5cm x 12cm.

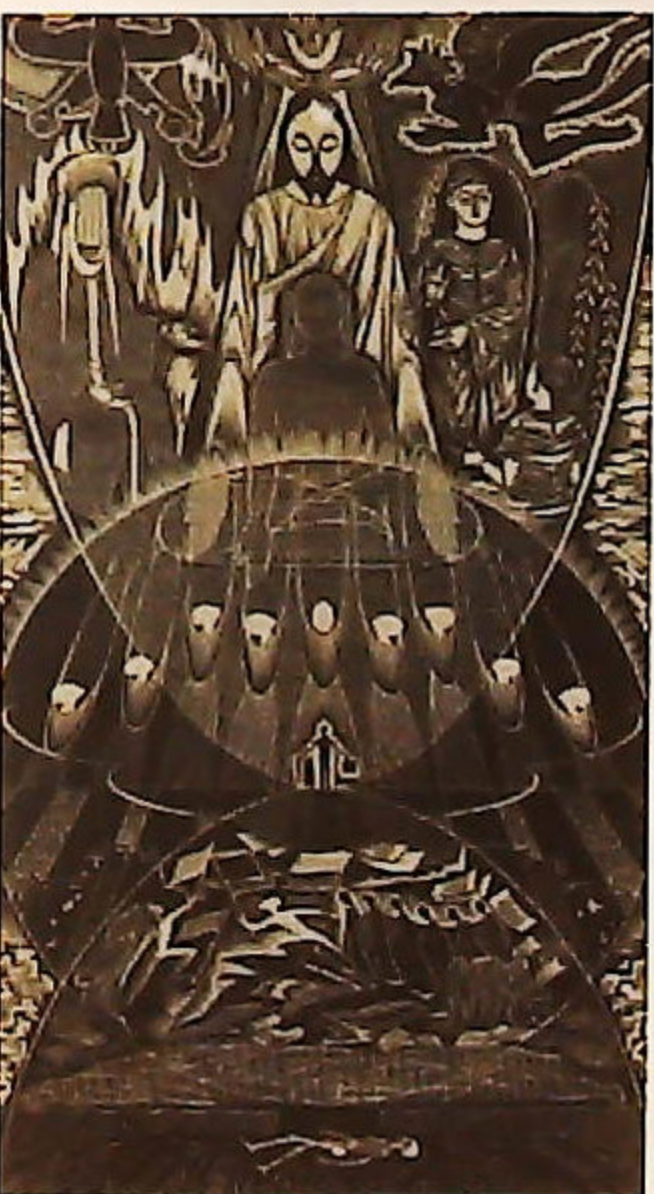
Lincoln Fine Art Sale



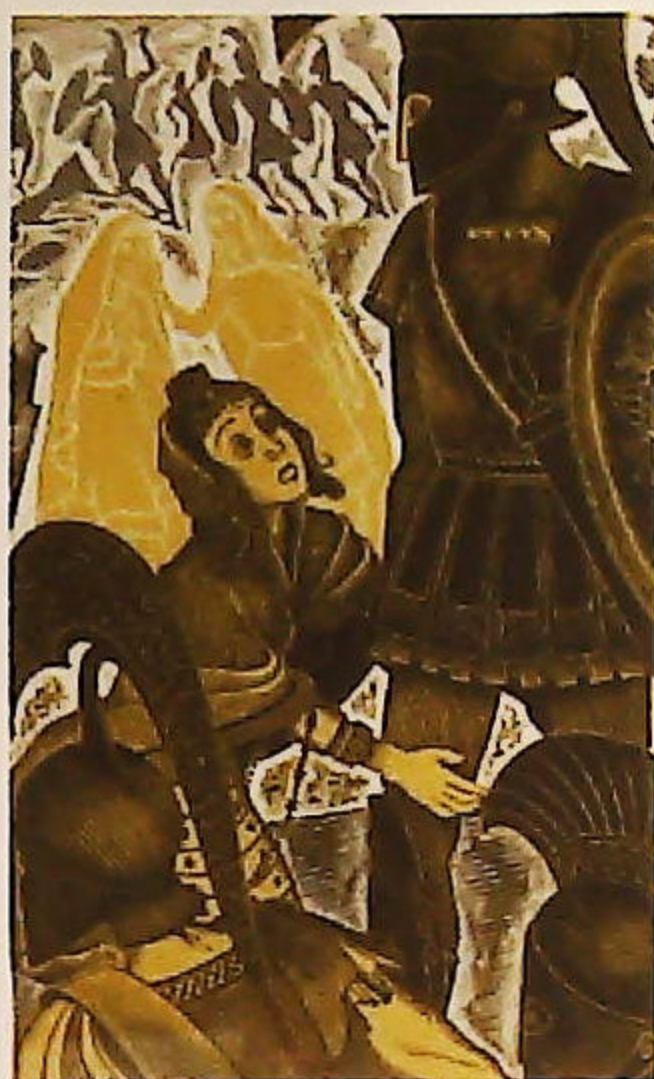
- ▲ 287.
Raymond Hawthorn (1917-1997).
Julius Caesar, book illustration for Folio Society, artist signed wood engraving and five others (6), 17cm x 12cm (various sizes).



- ▲ 288.
Raymond Hawthorn (1917-1997).
Naiad, book illustration for Folio Society, artist signed wood engraving and four others (5), 20cm x 9cm (various sizes).



- ▲ 289.
Raymond Hawthorn (1917-1997).
Mandala, artist signed wood engraving and seven others (8), 30cm x 17cm (various sizes).



- ▲ 290.
Raymond Hawthorn (1917-1997).
Herodotus, Struggle for Greece, artist signed coloured wood engraving, and six others (7), 19cm x 12cm (various sizes).



- ▲ 291.
Wilfred Charles Hawthorn (1877-1955).
Village street scene, watercolour, signed and dated 1951 and five other works, 24.5cm x 35cm.

292.
Wilfred Charles Hawthorn (1877-1955).
Newlyn, watercolour, signed and seven other works, 22cm x 32cm.

293.
Wilfred Charles Hawthorn (1877-1955).
A Hot Afternoon, Stoneleigh, watercolour, signed and dated 1949 and four other works, 22cm x 32cm.

294.
Hendrick Grise (1917-1982).
Female study, watercolour, signed, 59.5cm x 44.5cm.



- ▲ 295
Hendrick Grise (1917-1982).
Female study, watercolour, signed, 59.5cm x 44.5cm.
£40-60



- ▲ 296
20thC Continental School.
The Holy Mother, watercolour, 44cm x 57.5cm.

- 297
G. Catihez (?) (20thC).
Italian view, watercolour, indistinctly signed, 42.5cm x 61.5cm.

- 298
F. Gerilo (?) (20thC).
Young woman in a red dress, oil on canvas, indistinctly signed, 67cm x 48cm.



- ▲ 299
Michael Rothenstein (1908-1993).
Cockerel, watercolour, signed, 47cm x 38cm.
£500-800



- ▲ 300
Penelope Hammerton (20thC).
Ploughing, oil on board, initialled, titled verso, 41.5cm x 56.5cm.



- ▲ 301
Richard Blaridge? (20thC).
Coastal scene, oil on canvas, indistinctly signed, 59.5cm x 75cm.

- 302
Art books and catalogues,
including Belton (Professor Robert) The World of Art, Schama (Simon) Rembrandt's Eyes, Levy (Mervyn) Carel Weight, etc. (quantity).



- ▲ 303
Early 20thC Continental School.
Child with pan of water, oil on board, 18cm x 12cm.
£30-60



▲ 304.
Jack Merriott (20thC).
Venetian canal scene,
watercolour, signed,
24cm x 33cm.



▲ 305.
Norman James (American).
River landscape, artist signed
woodcut, 17cm x 27cm.



▲ 306.
Herbert Ogden Waters, American (1903-1996).
My Studio, artist signed
limited edition wood
engraving, 2nd edition, 8 of 72
and two others not by the
artist, 16.5cm x 21cm.



▲ 307.
Brian de Horswell (b.1939).
Moorland landscape, oil on
canvas, signed lower left,
40cm x 76cm.
£30-60



▲ 308.
Michael Warren (b.1938).
Golden eagle, watercolour,
31cm x 31cm, and two others
(3).

309
Peter Collins (1923-2001).
Studio works, figural studies,
Stanley Studios Chelsea, contents
of folder (quantity)

310
Cornish School.
Abstract studies, figures, boats,
watercolours and acrylics,
contents of folder (quantity).

311
Winchester School of Art.
Artworks and ephemera, circa
1960, contents of folder (quantity).



▲ 312.
Leon Danchin (1887-1938).
Setter, limited edition etching
169/500, 33cm x 26cm.



▲ 313.
H.M.S. (21stC School).
Barn owl, oil on board,
20cm x 16cm, and an E.V.A.
woodpecker watercolour (2).



▲ 314.
Gordon Beningfield (1936-1998).
Wader, watercolour,
18cm x 26cm
Provenance: The Moorland
Gallery, 23 Cork Street, Bond
Street, London W1.



▲ 315.
March Mitchard (b.1972).
Robin, acrylic on linen,
17cm x 24cm.



▲ 316.
Andrezj Kuhn (1929-2014).
The Swimmer, oil on canvas,
signed, 100cm x 55cm.
£100-200



▲ 317
Tingqua (19th/20thC).
River landscape with figures
and sailing junks, watercolour,
46.5cm x 63.5cm.



▲ 318
Tingqua (19th/20thC).
River landscape with figures,
sailing junks and pagoda,
46.5cm x 63.5cm.



▲ 319
David French (20thC).
Horse study, drawing, signed
and dated (19)90,
53cm x 40.5cm.
£150-250

Artist index

NAME: LOT NUMBER

A					
Adock	165	Goodman, Maude	55	P	
Affleck, Andrew Fairbairn	117	Graeme, Colin	88, 89	Paul, Joseph	58
Agersnap, Hans	158	Grise, Hendrick	295	Peceno, C	255-258
Agger, Knud	157, 168	Groffe	235	Provaggi	99
Ahmed, T	271	Groome, E H	114, 115	R	
Alexander	190	Gubler, Max	203	Ragon, Adolphe	9
Alley, T	264	Gurvich, Jose	2	Ravn-Hansen, Louise	154
B		H		Rawson, William	118
Baines, William	111	Hammerton, Penelope	300	Reid, John R	206
Bale, J	103	Hardy	164	Renucci, Renuccio	198
Bawden, Edward	208, 209	Hardy, Thomas Bush	95	Reynolds, Walter G	101
Bawden, Richard	210	Haslind, Otto	142	Richards, W	81
Bearne, Edward Henry	37	Hawthorn, Raymond		Robertson, Percy	121
Beavis, Richard	102	Humphrey	286-290	Rohde, Johan	156
Beningfield, Gordon	314	Hawthorn, Wilfred, Charles	291-293	Roig, Eliseo Meifren Y	185
Beopinato, F P di	172	Herring, John Frederick	62	Rosini, R	262
Berg, Andries van den	11	Hopmans	238	Rothenstein, Michael	299
Biggibilla, Graham Rennie	211	Horbins	237	Rowden, Thomas	69, 112
Blaridge, Richard	301	Horswell, Brian de	307	Ruffoni	245
Boulengel, G	176	Hovasa, E	38	S	
Bratton, A	97	Huskinson, Mark	127	Schiffers, N	252
Bredsdorff, Johann Marik	148	I		Selby, Vincent	268, 269
Brie, D	260	Israels, J	66	Signorini, Giovanni	1
Brunsdon, John	212	J		Slater, John Falconar	51
C		James, Norman	305	Spooner, A	205
Catihez, G	297	Jenson	120	Steenhouwer, Pieter, Cornelis	263
Charoux, Siegfried	170	Jerichau-Baumann, Ann Maria	49	St John, Edwin	87
Clare, Vincent	75	K		Strutt, Arthur John	70
Coats, M H	177	Kerkham, Thomas	279	T	
Collins, Peter	309	Kilburne, George Goodwin	43, 44	Tesson, Louis	54
Colm, Friedel	149	Koros	243	Thomas, William Bartol	10, 132-134
Cooper, Thomas Sidney	5, 14-27, 29, 32	Krough, Christian	144	Tingqua	317, 318
Cordenet, A	100	Kuhn, Andrejz	316	Turner, George	82
Coulange-Lautree, E	153	L		Treund, F	224
Coulson, John	199	Langmaid, Rowland	113	Trickett, John	135
Cox, David	53	La Pira	183	Trickett, W Wasdell	171
Creswick, Thomas	96	Larsen, Adolph Alfred	150	V	
D		Lassen, Jeanette	220	Vanderwakk, C	259
Danchin, Leon	312	Lecoque, Alois	146	Verboeuckhoven, Eugene	
Davidson, Charles	13	Lewis, Percy Wyndham	270	Joseph	33, 34
Davis, Noel Denholm	201	Linnell, John	186	Vignoles, Andre	225, 226
Dawson, Henry Thomas	50	Lowry, Lawrence Stephen	3, 214	Vincent, F	173
Denny, J	191	Lozano, Nydia	231	Vildenrad, J P von	166
Dobson, Tom	215	Lyon, Robert	275	Vogel, Leendert de	174, 194
Dorschot, Theodorus van	161	M		W	
Dyer, E	261	Mackey, H	178	Wallace, John	77
Dylan, Bob	216-218	Madsen, Andreas Peter	152	Waller, David	136, 137
E		Marche de Lummen, Emile van	65	Wallett, Henry Charles	86
Earp, George	63, 64	Marck, Jerzy	222	Walter, Rosetta	213
Estinson, V D	248	Martin, Kenneth	273	Watt, Linnie	93, 94
Eveleigh, John	272	Matthiessen, Oscar	141	Ward, H	265
Eversen, Johannes, Hendrick	232	McIlroy, Maude G	189	Warren, Michael	308
F		Meadows, Edwin Long	105	Waters, Herbert Ogden	306
Falik, Heim	276, 277	Meissonier, Ernest	41	Webb, James	52
Farquharson	249	Merriott, Jack	305	Weston, David	138-140A
Flint, William Russell	219	Mitchard, March	315	Wheatley, John Laviers	202
Fortunato, P	227-229	Mols, Nils Penderson	169	Wheeldon, Robin	126
Fox, Henry Charles	67	N		White, Alfred Ernest	128-131
Fuchs, Karel	159	Nicholas	223	Wildt, Sylvester	147
French, David	319	Nis, Thorald	160	Wilhelm, Johannes M Fasting	4
Fripp, Innes	266	Nodrik	230	Williams, Walter Heath	91
G		O		Wint, Peter de	125
Gasteiger, Anne Sophie	285	O'Connor, Charles	119	Z	
Gerilo, F	298	Onnes, Harm Henrick		Zahrtmann	143
Gianni, A	179	Kamerlingh	204		

As at the time of printing, lots without estimates are to be sold without reserve, auctioneer's discretion.
See online catalogue for updates.

EST
1864
GOLDING YOUNG



Thinking of selling?

Executors, solicitors, accountants, insurers, corporations and government departments, have to exhibit due diligence when instructing. Use this checklist to do the same, with a few reasons why you may wish to choose us.

We are regulated by RICS
Better Regulation for Us.
Better Protection for You.
Accept Nothing Less.

Our online catalogues
For over 20 years our catalogues have been online and our experience ensures they are placed in front of the right buyers in the global market.

Our sales results
July 2018 saw our 117th consecutive month with a sale at either Bourne, Grantham or Lincoln producing a sold rate of over 90%. Good advice, great results for hundreds of vendors every month.

Join their success with an entry in our next sale!

goldingyoung.com

HOUSE CLEARANCE

If there is that hidden 'find', it will be to your direct benefit.

Every week we take instructions for House Clearance for all of the prominent firms of Solicitors in the area, as well as from Private Individuals, Trustees and Executors.

If you are dealing with the content of a property, please contact us at the earliest point.

A visit to the premises by one of our qualified and experienced appraisal staff will offer the best advice for Security, Valuation and Sale.

DISPOSE OF NOTHING

Often things thought to be rubbish are saleable.

IMMEDIATE ACTION IS REQUIRED

Once a property is uninhabited it is a target for burglars and your insurance may be invalid.

Items removed from premises are listed and handled by our professional carriers. Goods are then allocated to the next appropriate sale to ensure the highest sale return.

We also deal with the unsaleable residue, disposed of in the most cost-effective and environmentally friendly way, giving a total service.



PROPERTIES CLEARED, PROMPTLY AND EFFICIENTLY

Call: John Ireland MA MRICS - 01778 422686
For Bourne, Stamford, Peterborough Region and Southern Counties

Call: Craig Bewick BA (Hons) MRICS FNAVA - 01476 565118
For Grantham Region and The Midlands

Call: John Leatt ASFAV - 01522 524984
For Lincoln Region and Northern Counties

The Bourne Auction Rooms
Spalding Road, Bourne,
Lincolnshire PE10 9LE

E: bourne@goldingyoung.com
T: +44 (0) 1778 422686
F: +44 (0) 1778 425726

The Grantham Auction Rooms
Old Wharf Road, Grantham,
Lincolnshire NG31 7AA

E: grantham@goldingyoung.com
T: +44 (0) 1476 565118
F: +44 (0) 1476 561475

The Lincoln Auction Rooms
Thos Mawer House, Station Road
North Hykeham, Lincoln LN6 3QY

E: lincoln@goldingyoung.com
T: +44 (0) 1522 524984
F: +44 (0) 1522 681804

The Louth & Wolds Office
5 Mercer Row, Louth
Lincolnshire LN11 9JG

E: louth@goldingyoung.com
T: +44 (0) 1507 661864

The Stamford & Rutland Office
1, The George Mews
Station Road, Stamford
Lincolnshire PE9 2LB

E: stamford@goldingyoung.com
T: +44 (0) 1780 751666

goldingyoung.com

